

# BENEDICTINE HOSPITAL

## Annual Report 2006/7



**Facility Information Office**



## Editors : Information Technology Staff



**Mr. I.P Buthelezi**  
**Facility Information Officer**



**Mr. B.W Nxumalo**  
**Data Capturer**

# Table of content

- **Vision & Objective**
- **Mission statement**
- **Co-values**
- **Human Resources profile**
- **Total OPD headcounts**
- **Social Workers**
- **X-Ray Department**
- **Pharmacy Department**
- **Dental Clinic**
- **Laboratory. Department**
- **TB Department**
- **HIV/Aids Department.**
- **Therapy Unit**
- **Theatre**
- **Inpatient days, discharges & admissions**
- **Deaths**
- **Maternity**
- **Sick bay for staff cases**
- **Budget & Expenditure**
- **Generation of Revenue**
- **Conclusion**

## **Vision**

**Is to become a number one information management, co-ordinator and analyser within D26 in providing leadership in the promotion of access and utilisation of statistical information to support evidence based on planning management and decision making in order to advance patient care and service delivery to the Hospital and to people within our catchments' area.**

## **Objectives**

**To provide quality data according to the figures being collected.  
To ensure knowledge and Information system is in place.  
To integrate Information system by linking all finance and other non-clinical data for management.  
To facilitate consumer satisfaction by ensuring dignity and right of patients and other stakeholders.  
To subscribe to Batho Pele principles.**

## **Mission Statement**

**The Facility Information Office is committed to provide timeously, most precise, accurate, quality, reliable and up to date statistical data. And to co-ordinate the Hospital statistical system ensuring the participation of all the community that we serve and our staff by continuously assessing and meeting their needs within available resources respecting the patient charter.**

## **Core-values**

**EXCELLENCE BASED ON THE PROMOTION OF COMMITMENT**

**Performance disciplines, efficiency and effectiveness**

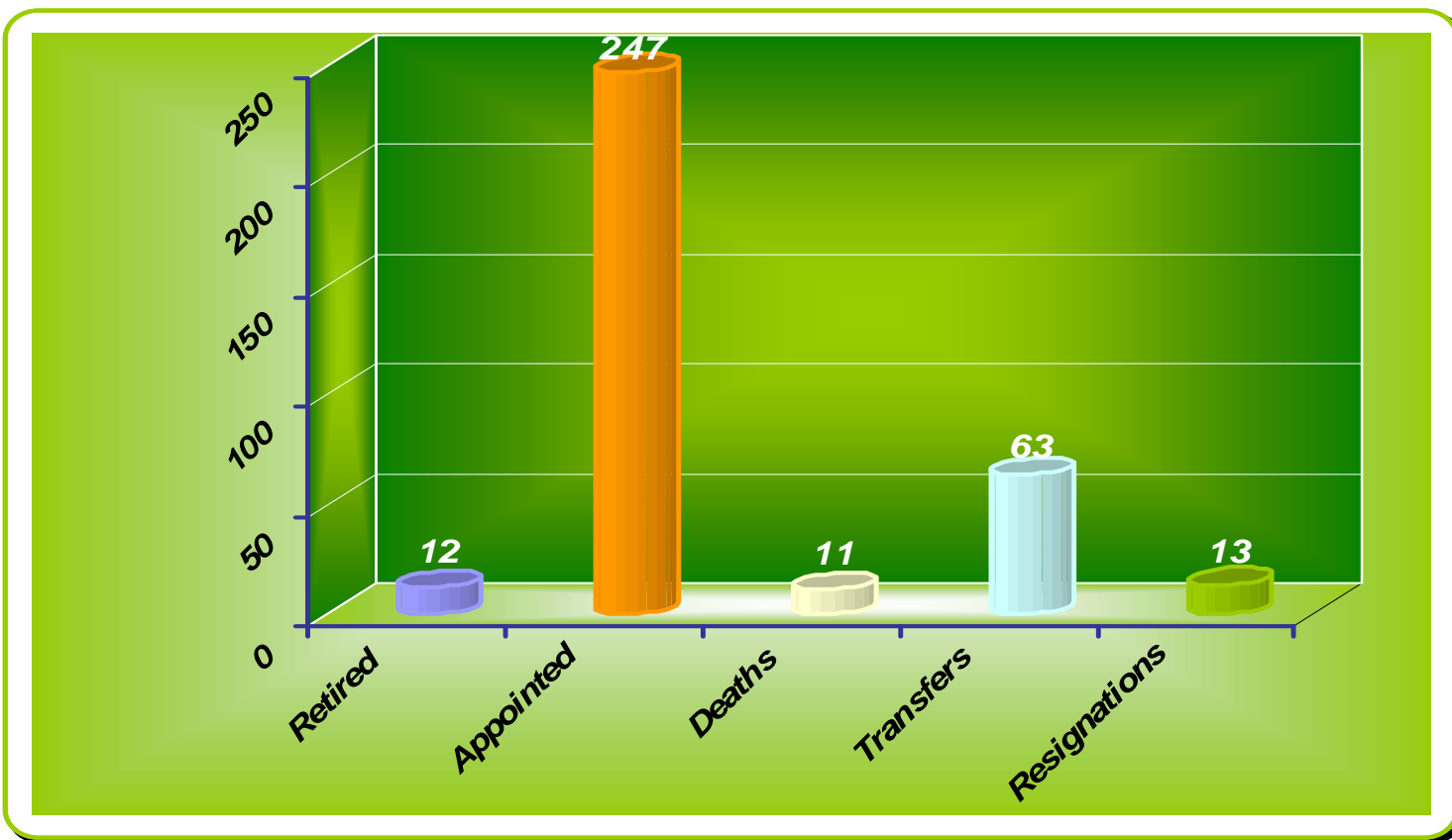
**Openness, Transparency & accountability**

**Willingness to change develops and respect patient charter**

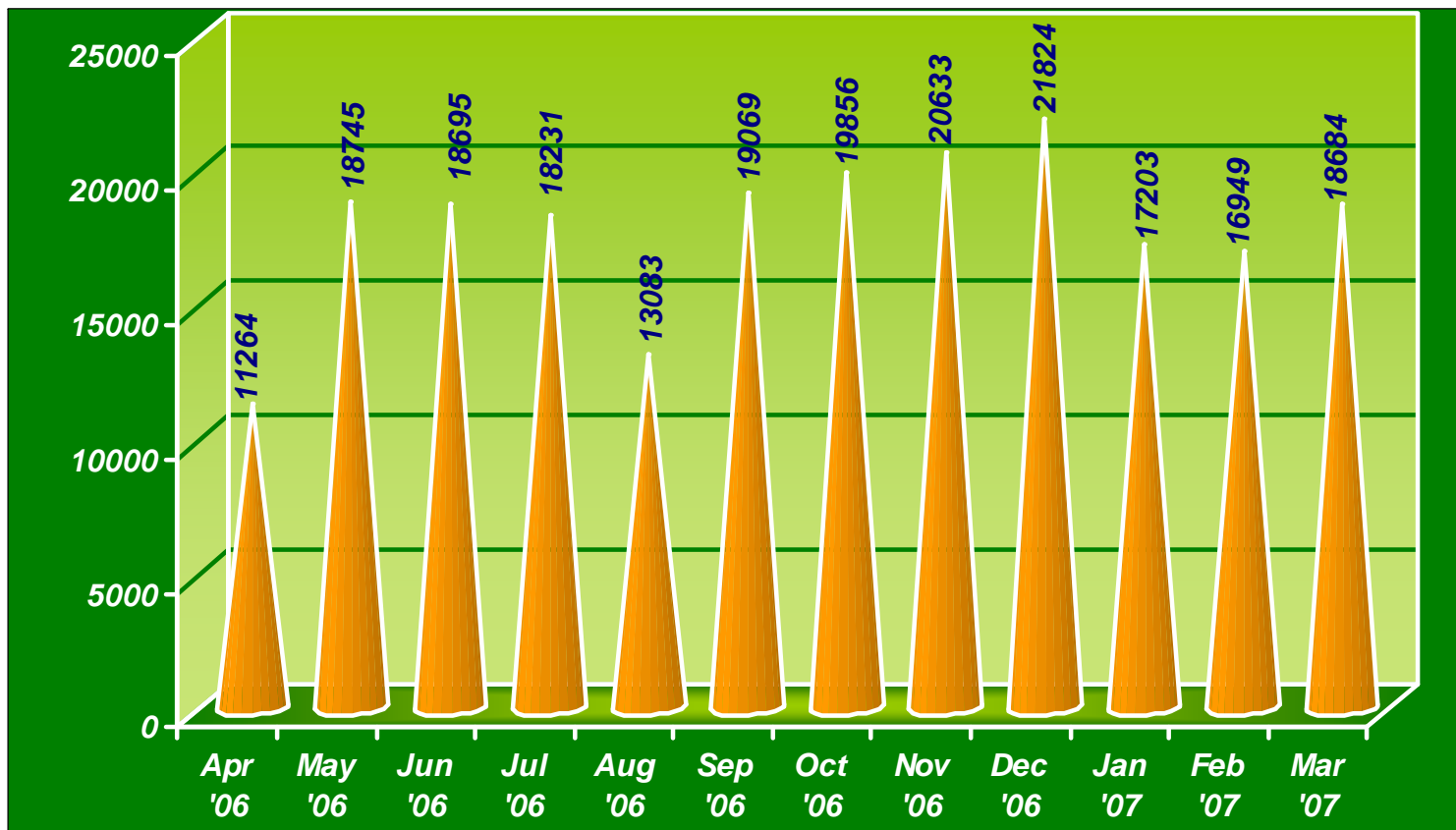
**Excellence quality information & good performance.**

<i>CATEGORY</i>	<i>APPROVED POSTS</i>	<i>FILLED POSTS</i>	<i>VACANT POSTS</i>
<i>Hospital Manager</i>	1	1	0
<i>Medical Manager</i>	1	1	0
<i>Nursing Manager</i>	1	1	0
<i>Finance &amp; Systems Manager</i>	1	1	0
<i>Human Resources Manager</i>	1	1	0
<i>Pharmacy Manager</i>	1	1	0
<i>Dentist</i>	1	1	0
<i>Medical Officers</i>	38	26	7
<i>Pharmacists</i>	22	2	20
<i>Physiotherapists</i>	4	1	3
<i>Radiographers</i>	8	3	5
<i>Dental Therapists</i>	1	0	1
<i>Occupational Therapists</i>	2	0	2
<i>Professional Nurses</i>	356	236	120
<i>Enrolled Nurses</i>	126	112	14
<i>Enrolled Nursing Assistants</i>	185	169	16
<i>Pharmacy Assistants</i>	13	6	7
<i>Assistant Nursing Managers</i>	7	6	1
<i>Artisan Superintendent</i>	1	0	1
<i>Clerical Staff</i>	102	87	14
<i>Other Admin Support Staff</i>	349	315	34
<i>Clinical Orderlies</i>	16	16	0
<i>Ward Clerks</i>	12	12	0
<b>TOTAL</b>	<b>1242</b>	<b>998</b>	<b>244</b>

# Staff Retention

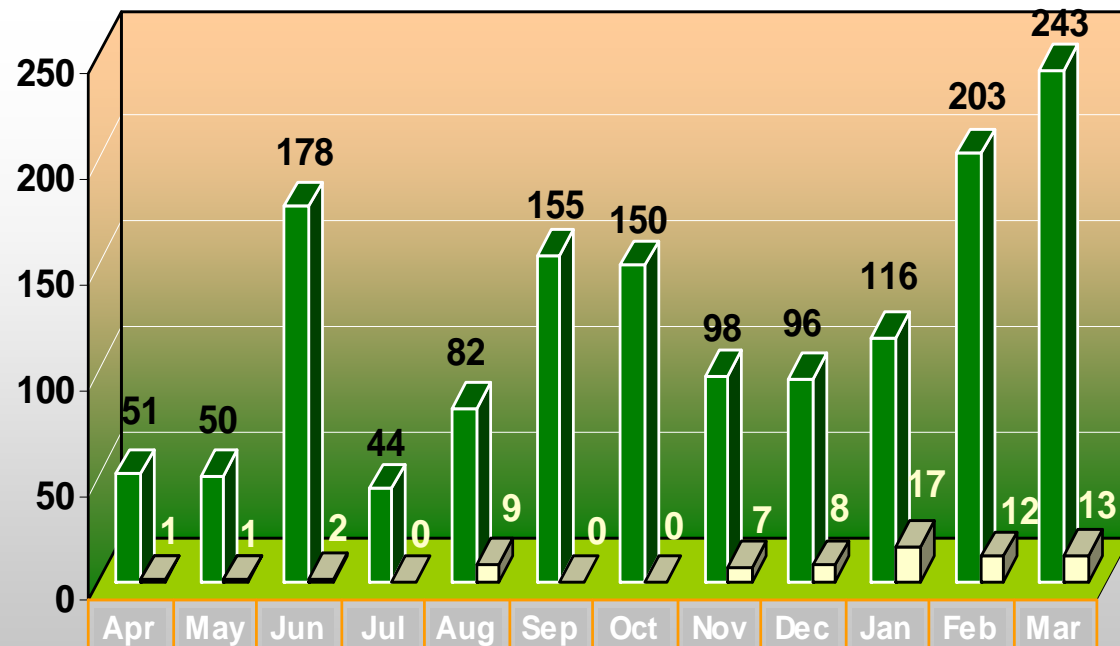


# OPD Headcounts



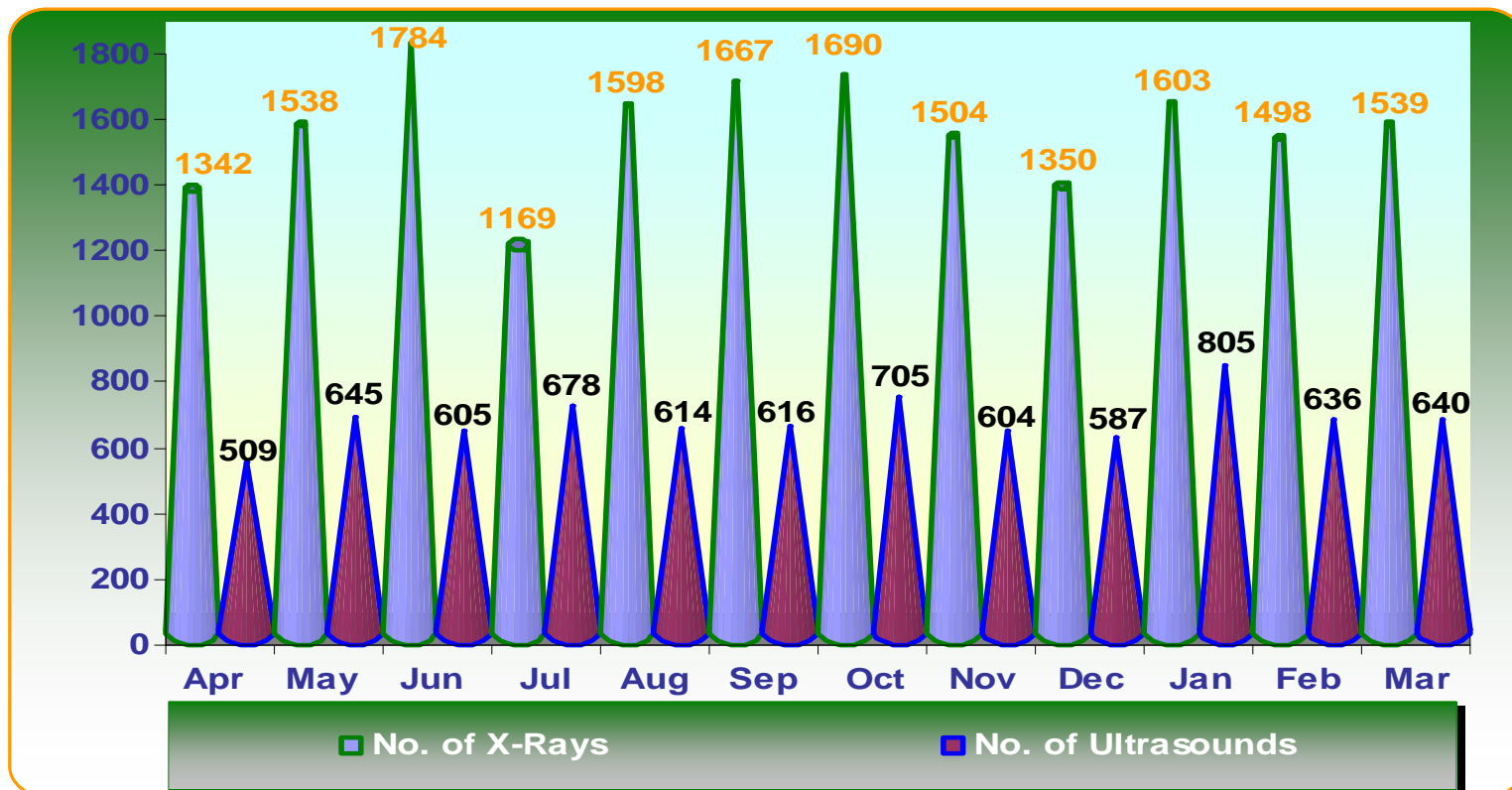


# Social Workers Dept.

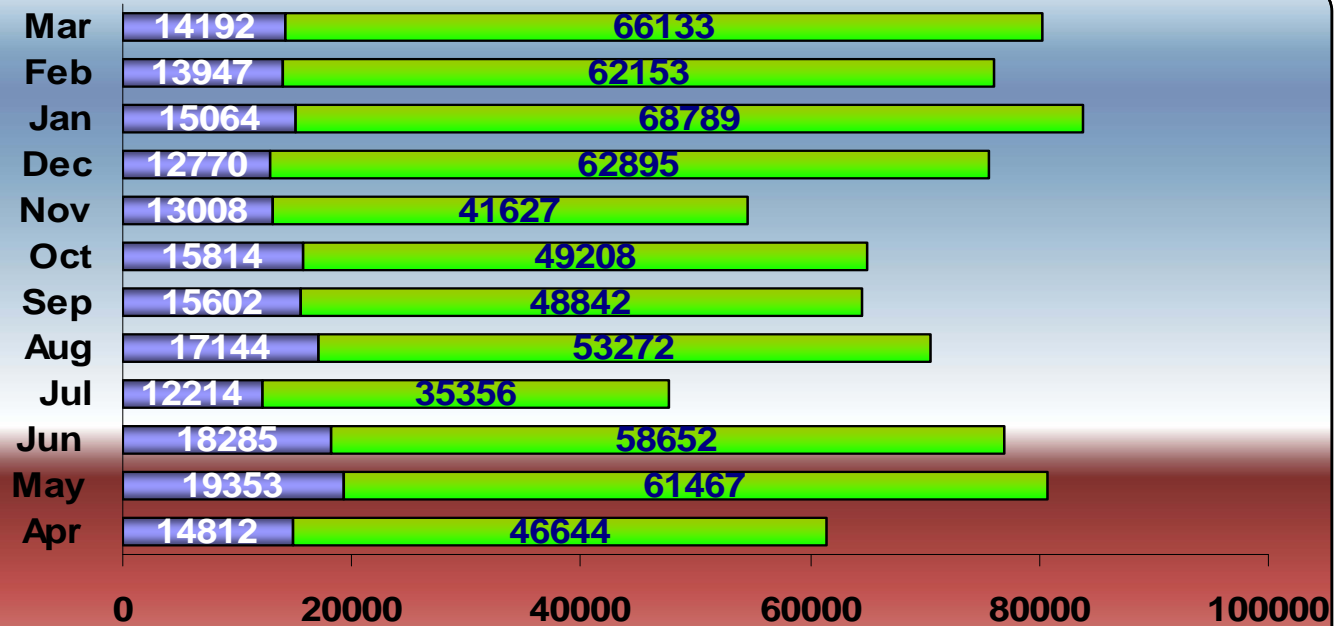


■ Visits	51	50	178	44	82	155	150	98	96	116	203	243
□ Rape Cases	1	1	2	0	9	0	0	7	8	17	12	13

# X-Ray Department

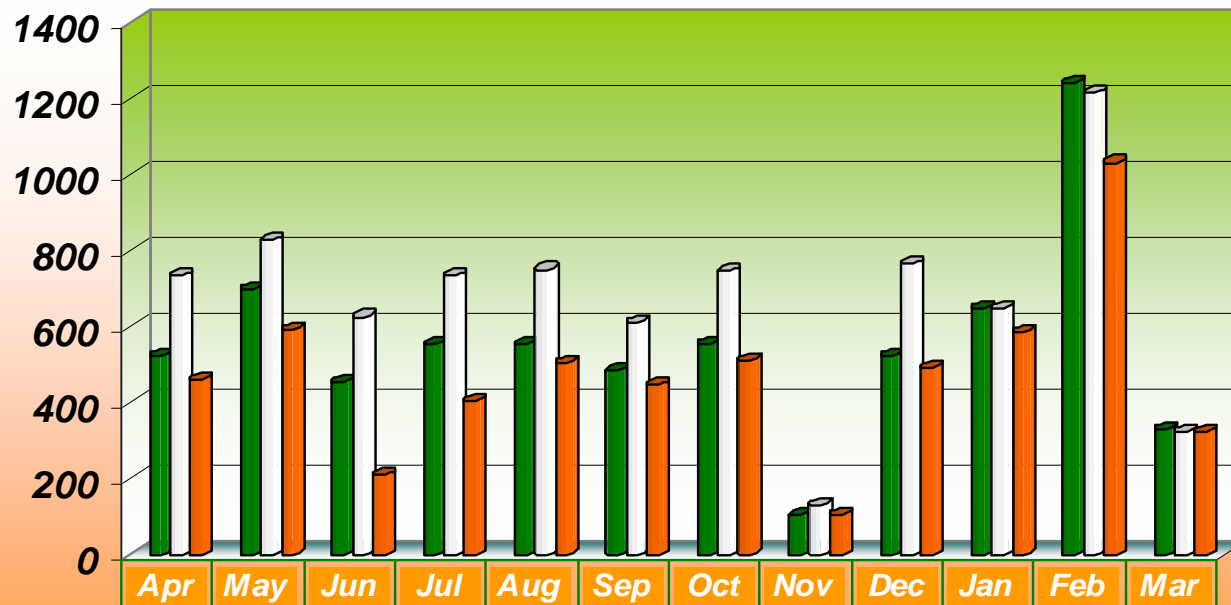


# Pharmacy Dept.



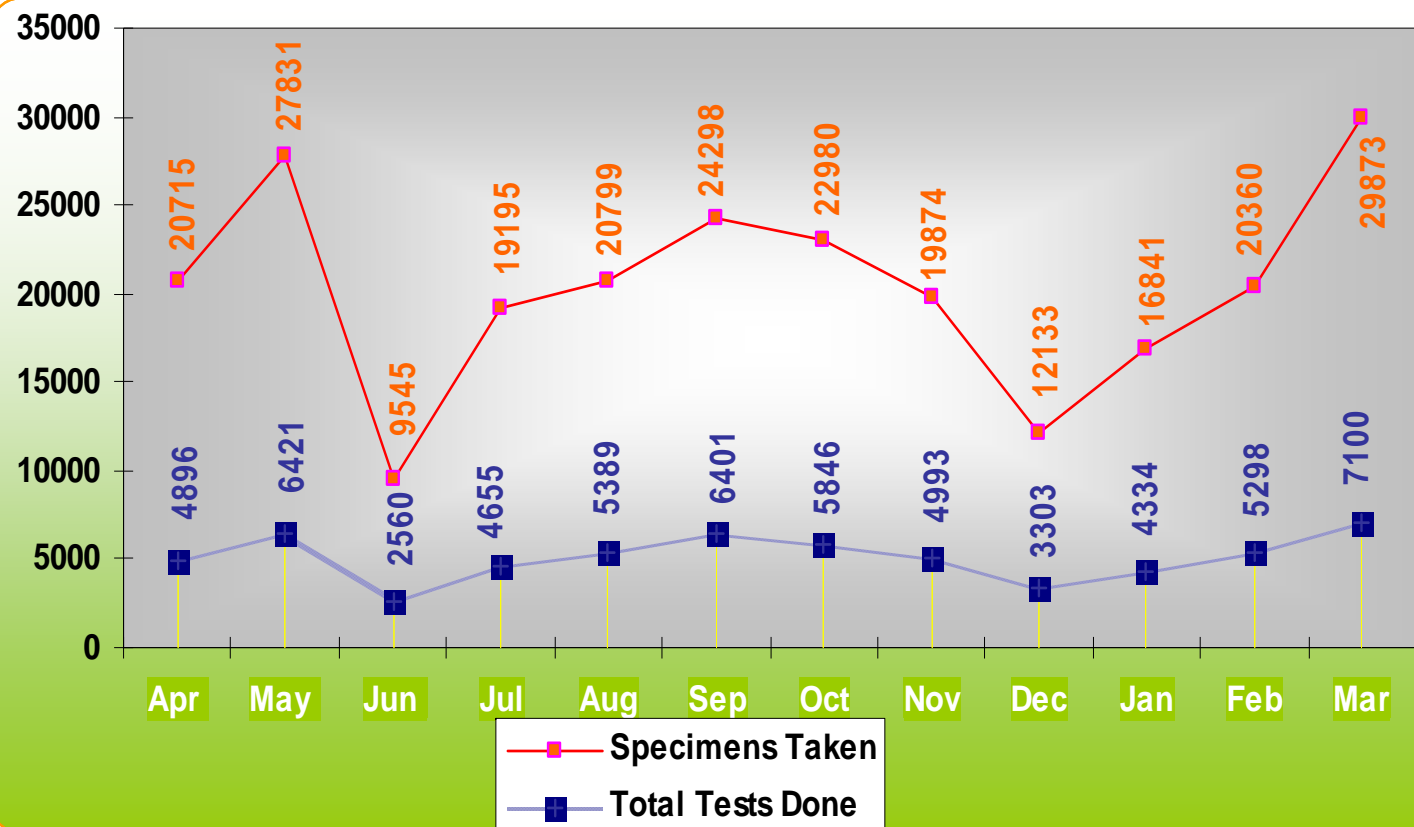
	<i>Apr</i>	<i>May</i>	<i>Jun</i>	<i>Jul</i>	<i>Aug</i>	<i>Sep</i>	<i>Oct</i>	<i>Nov</i>	<i>Dec</i>	<i>Jan</i>	<i>Feb</i>	<i>Mar</i>
<b>■ No. of Items</b>	4664	6146	5865	3535	5327	4884	4920	4162	6289	6878	6215	6613
<b>■ No. of Scripts</b>	1481	1935	1828	1221	1714	1560	1581	1300	1277	1506	1394	1419

# Dental Clinic



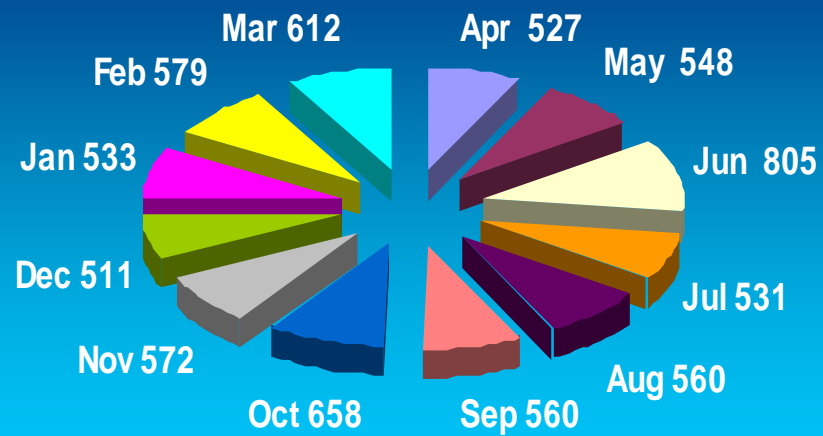
	Apr	May	Jun	Jul	Aug	Sep	Oct	Nov	Dec	Jan	Feb	Mar
■ <i>Headcounts</i>	523	697	456	552	553	482	556	102	524	649	1241	330
□ <i>Extractions</i>	732	827	625	734	750	610	746	131	765	649	1214	323
■ <i>Oral Hygiene Inst.</i>	461	591	209	405	505	445	512	106	492	585	1031	323

# Lab. Department



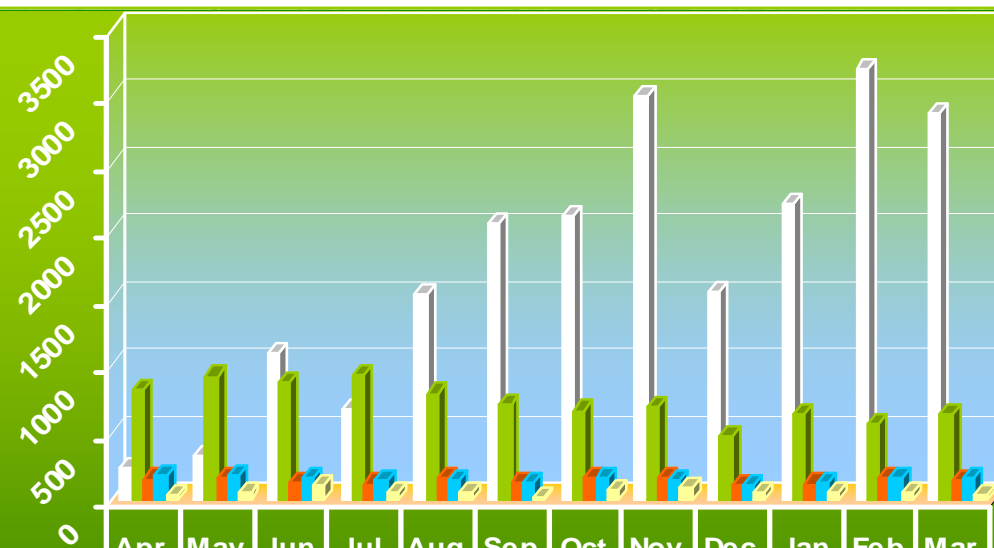
# TB Clinic

## Visits



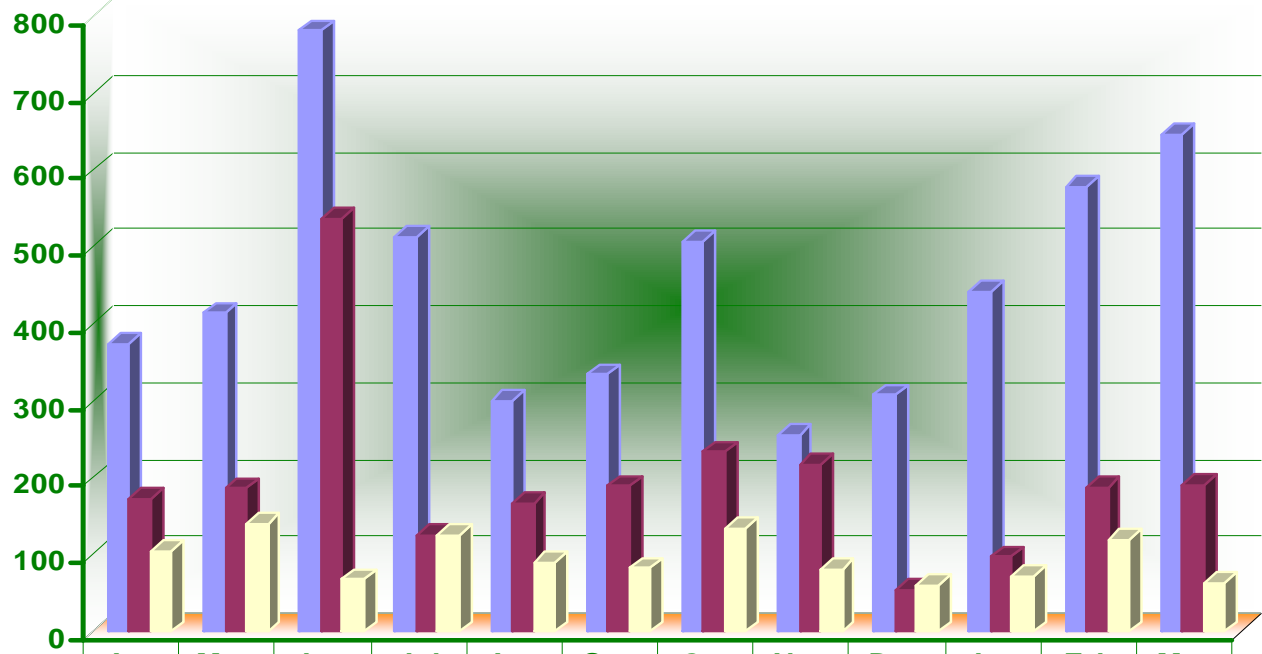
Apr May Jun Jul Aug Sep Oct Nov Dec Jan Feb Mar

# HIV/Aids Dept.



■ Headcounts	245	335	1094	684	1532	2067	2116	2999	1557	2212	3210	2880
■ Total Tested	823	924	881	929	797	710	670	700	485	649	577	647
■ No. of Negatives	162	175	141	126	171	132	177	168	121	125	165	157
■ No. of Positives	181	197	166	160	158	141	179	157	124	132	167	163
■ ART Patients	46	58	110	62	67	31	76	94	56	64	68	50

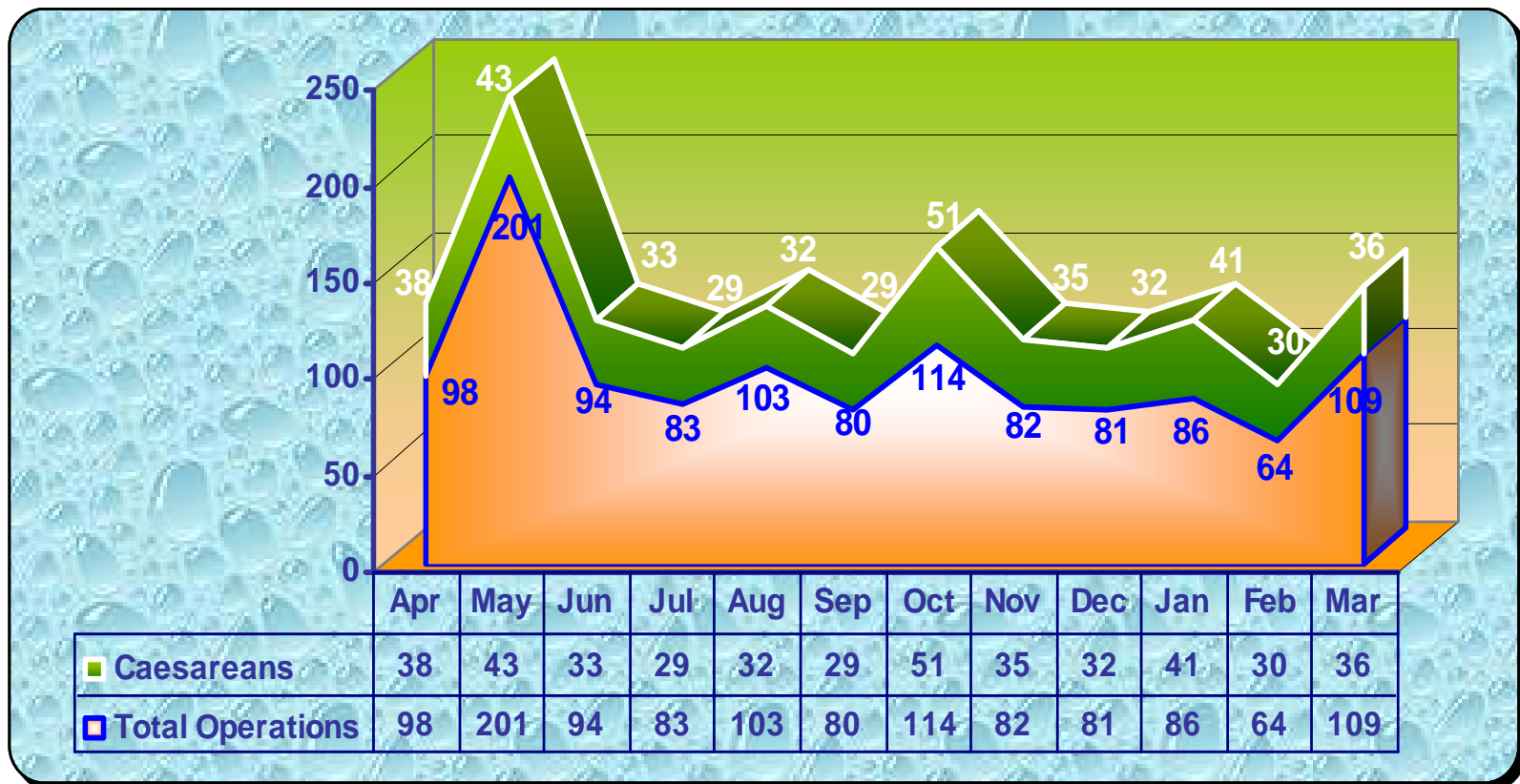
# Therapy Unit



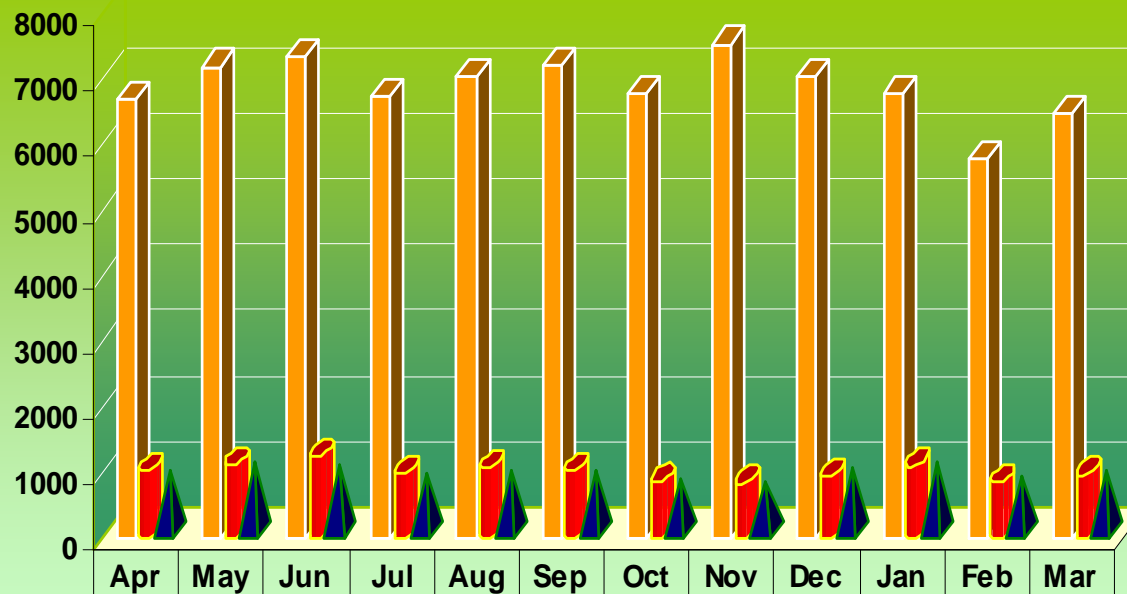
	Apr	May	Jun	Jul	Aug	Sep	Oct	Nov	Dec	Jan	Feb	Mar
■ Physio visits	374	415	782	514	300	335	507	256	308	444	580	648
■ Occupational visits	173	187	537	125	168	190	234	218	55	98	188	191
■ Walking aids issued	105	140	68	126	90	83	135	82	60	73	121	63



# Operating Theatre

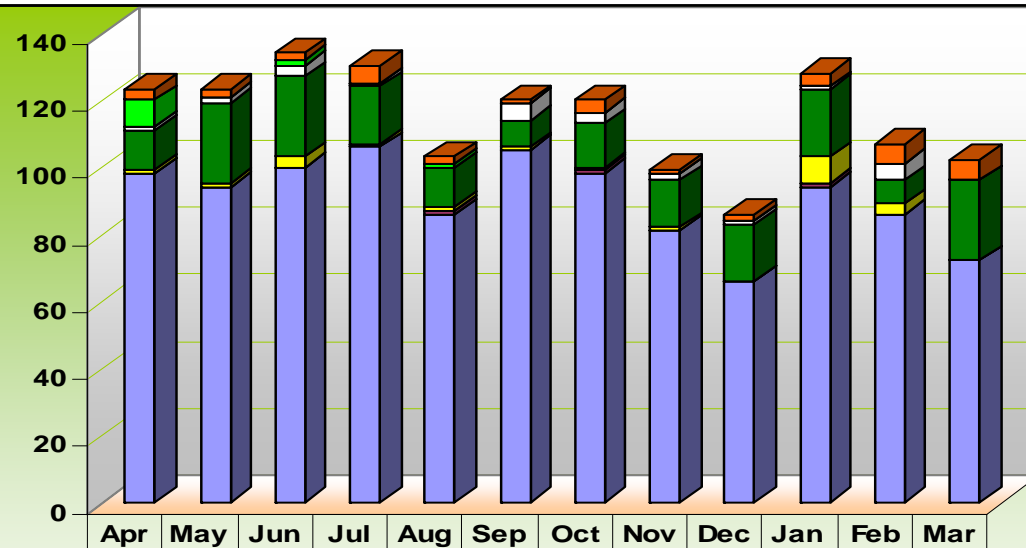


# Wards Summary



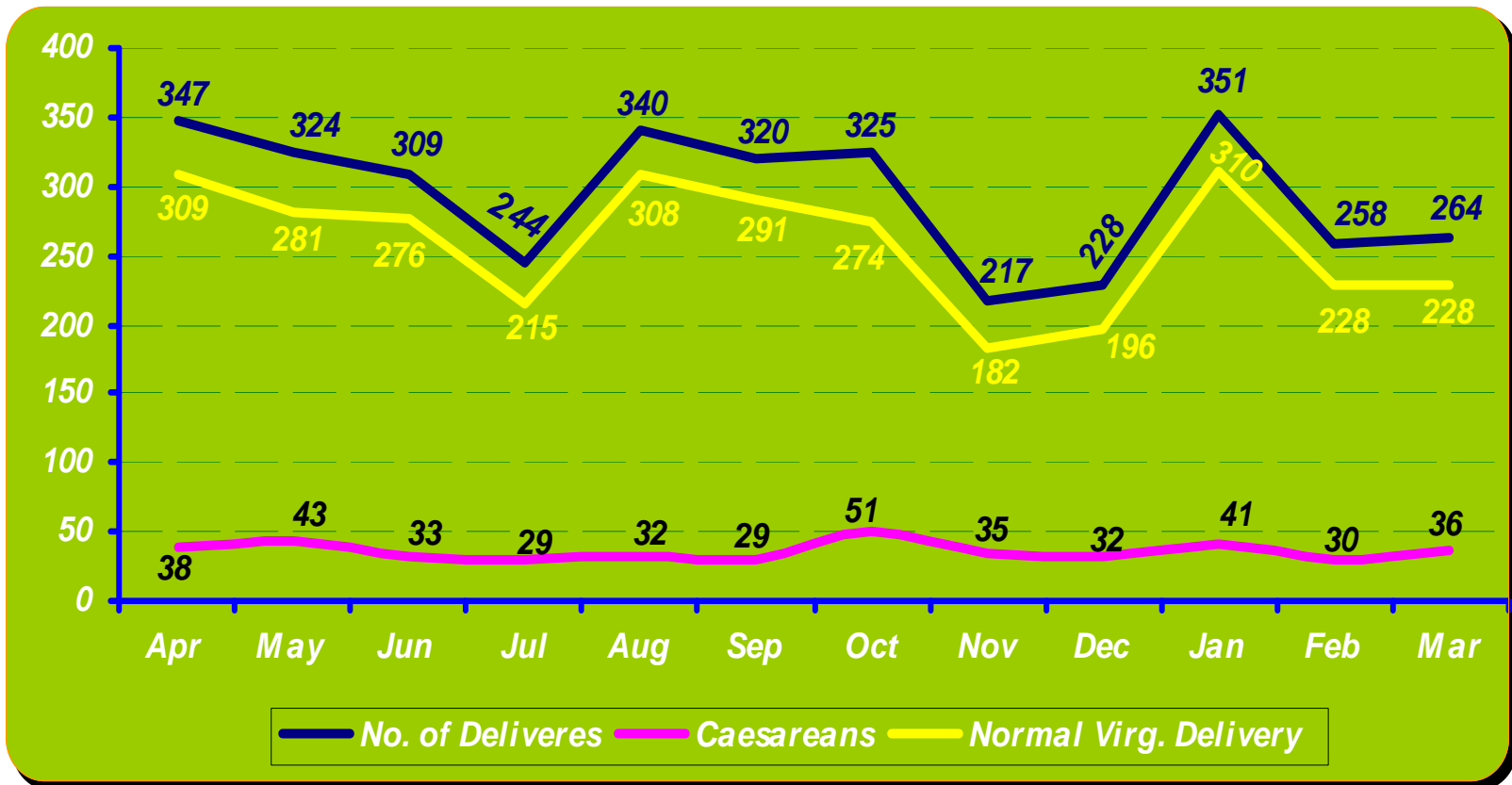
	Apr	May	Jun	Jul	Aug	Sep	Oct	Nov	Dec	Jan	Feb	Mar
<b>Inpatient days</b>	6659	7171	7314	6721	7016	7194	6765	7518	7035	6765	5763	6446
<b>Admissions</b>	1014	1100	1233	979	1073	1035	871	832	954	1091	865	962
<b>Dicharges</b>	900	1010	986	850	894	903	765	742	920	1037	789	876

# Deaths



	Apr	May	Jun	Jul	Aug	Sep	Oct	Nov	Dec	Jan	Feb	Mar
<span style="color: orange;">■</span> Surgical Wards	3	2	2	5	2	1	4	1	2	4	6	6
<span style="color: red;">■</span> Maternity	8	0	2	0	1	0	0	0	0	0	0	0
<span style="color: white;">■</span> ICU	1	2	3	1	0	5	3	2	1	1	5	0
<span style="color: green;">■</span> Peadiatrics	12	24	24	17	12	8	13	14	17	20	7	24
<span style="color: yellow;">■</span> Gynaecology	1	1	3	1	1	1	1	1	0	8	3	0
<span style="color: purple;">■</span> Othorpaedics	0	0	0	0	1	0	1	0	0	1	0	0
<span style="color: blue;">■</span> Medical Wards	98	94	100	106	86	105	98	81	66	94	86	72

# Maternity



# Sick Bay for Staff



# Budget & Expenditure

## Expenditure report from 01/04/2006 to 31/03/2007

STANDARD ITEM	ALLOCATION	EXPENDITURE	BALANCE
- Compensation of employees	R75 510 000	R82 006 450	R6496 450
<b>GOODS &amp; SERVICES</b>			
- Medicine	R4 880 000	R6 031 148	R1 151 158
- Other	R17 514 00	R20 512 796	R2 998 796
- HRD	R246 000	R227 860	R18 140
<b>TRANSFER &amp; SUBSIDIES</b>			
-Prov & Loca. gov.	R200 000	R68 696	R131 304
- House hold	R899 000	R647 187	R251 816
<b>CAPITAL ASSET</b>			
- Equipment	R 2000 000	R192 1064	R78 936
- Vehicle	R500 000	R128 964	R371 036
<b>TOTAL</b>	<b>R101 923 000</b>	<b>R111 544 162</b>	<b>R9795 172</b>

## Generation of Revenue

<b>ITEM</b>	<b>AMOUNT</b>
<b>Sales goods and services</b>	<b>R1055 622</b>
<b>Sales: scraps, Waste&amp; other goods</b>	<b>R6789</b>
<b>Fines, Penalties &amp; Forfeits</b>	<b>N/A</b>
<b>Revenue: Financial Assets</b>	<b>R17 173</b>
<b>TOTAL</b>	<b>R1079584</b>

## Conclusion

**It's important to know how powerful the information is and its value. Also in what quality it's on, because its quantity means none.**

**Because the poor information supplied may cause the much impact on the budget allocation and planning which may result in much activities and work not continuously successfully done.**

**We thank a lot to be given this opportunity to give the feedback and to update all stakeholders.**

**We would like to pass our sincere thanks to everyone who participated to make this bulletin a success. Special thanks go to the hospital management, District information office (DC 26), unit managers, wards and sections.**

**For us to provide the accurate figures of statistics and information wouldn't be as such without your input.**

**Also apologise to our sections for being hard when it comes to work our aim wasn't to hurt but to hit the target.**



**THANK YOU**