

Charles Johnson Memorial Hospital

Quater 4 report



Period : April 05 to March 06

THE HOPITAL

- *C.J.M hospital was named after Archdeacon Charles Johnson, the Director of St Augustine mission at Masotsheni. Although he did not found a hospital himself, he was apparently renowned as puller of rotten teeth.*
- *In 1936 the hospital moved 20km to Ngutu .The purpose of the move was to place the hospital in a logical site for future development .Dr Anthony and Maggie Baker came in July 1945 and it was these two who were instrumental in developing this hospital .On the 30 July 1976 the hospital was handed over to the South African government.*



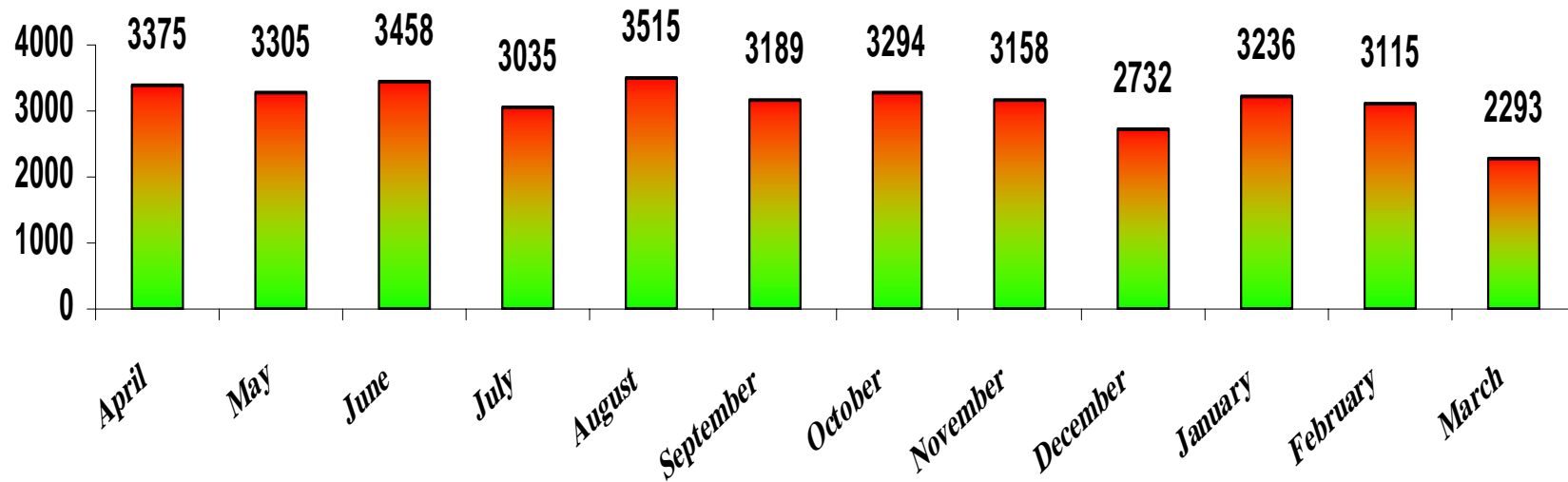
INTRODUCTION

- C.J.M hospital is a district hospital that is committed to providing comprehensive community – centred quality care services in collaboration with other key role-players through the district health system approach.
- C.J.M hospital has 349 usable beds and is providing health care services to 148724 catchment's population .CJM Hospital serves as a referral hospital for eleven Primary Health Care clinics namely, Felani, Hlathidam, Isandlwana, Kwanyezi, Mangeni, Masotsheni, Mkhonjane, Nkande, Ntinini, Nondweni and Gateway clinic. There are three mobile teams that cover a 33 clinic points.

CONTENT

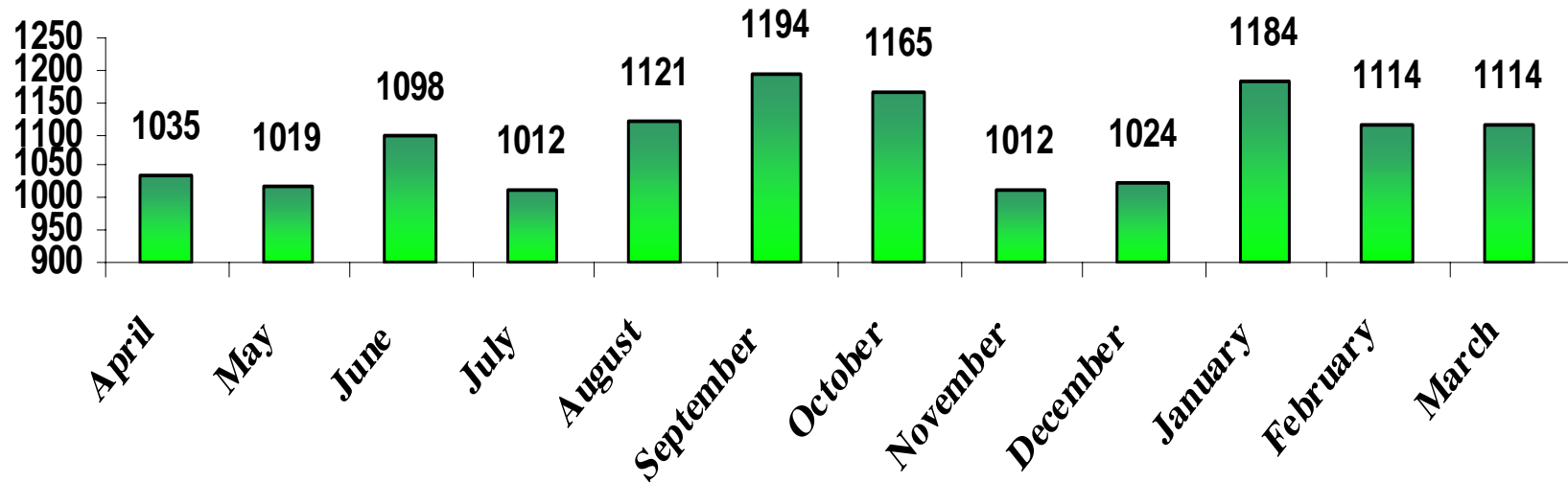
- *MAP OF C.J.M HOSPITAL*
- *ACKNOWLEDGEMENT*
- *INTRODUCTION*
- *TOTAL OPD HEAD COUNT ALL AGES*
- *ADMISSIONS*
- *INPATIENT DAYS*
- *DEATHS*
- *DEATHS UNDER 5 YEARS*
- *MARTERNAL DEATHS*
- *STILL BIRTHS*
- *NUMBER OF WOMEN DELIVERED*
- *WOMEN MORE THAN 34 YEARS DELIVERED*
- *WOMEN LESS THAN 18 YEARS DELIVERED*
- *TOTAL BIRTHS*
- *VITAMIN A SUPPLEMENT TO WOMEN DELIVERED*
- *NUMBER OF ITEMS DESPENSED*
- *NUMBER OF PRESCRIPTION*
- *TEST DONE*
- *TOTAL SPECIMENS TAKEN*
- *EXTRACTION*
- *NUMBER OF X RAYS*
- *TOTAL OPERATION*
- *PATIENT SCREENED AT PPT*
- *CATARACT OPERATION DONE*
- *PATIENT SEEN AT VCT/PMTC*
- *PATIENT ON ARV'S*
- *CLIENT SEEN AT CRISIS CENTRE*
- *INDICATORS*

Total OPD Headcount all ages 2005/2006



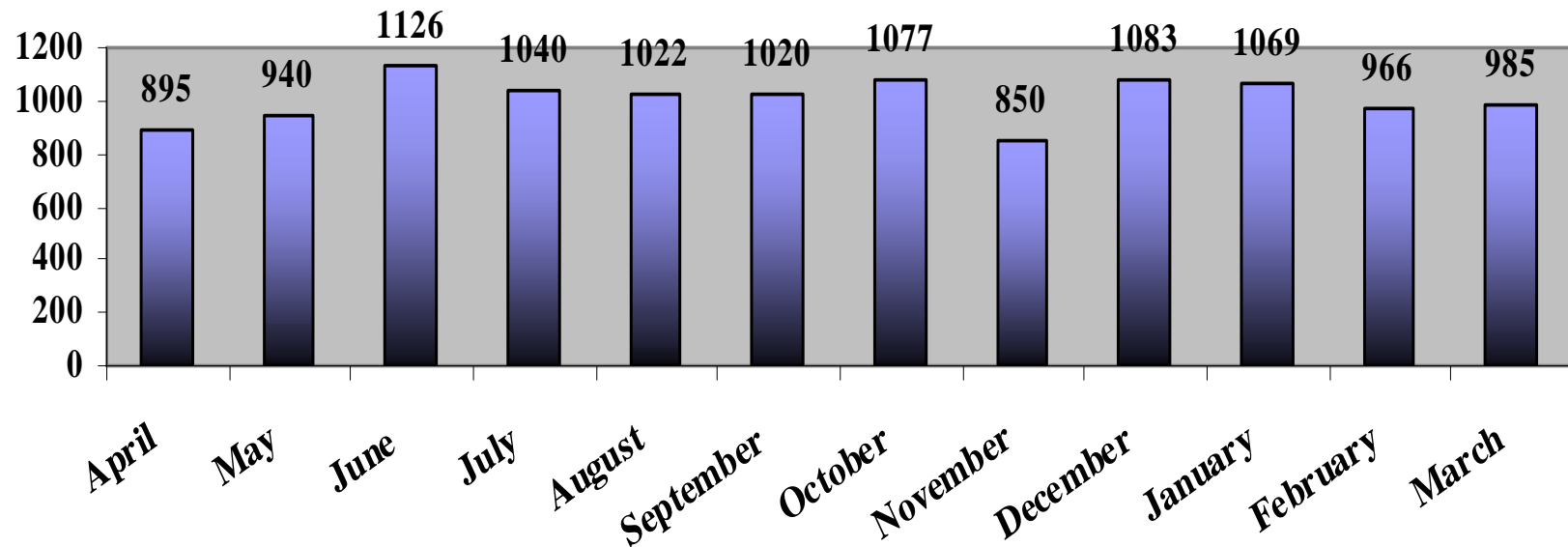
**THIS IS THE TOTAL NUMBER OF
CLIENTS SEEN AT OPD**

Admissions 2005/2006



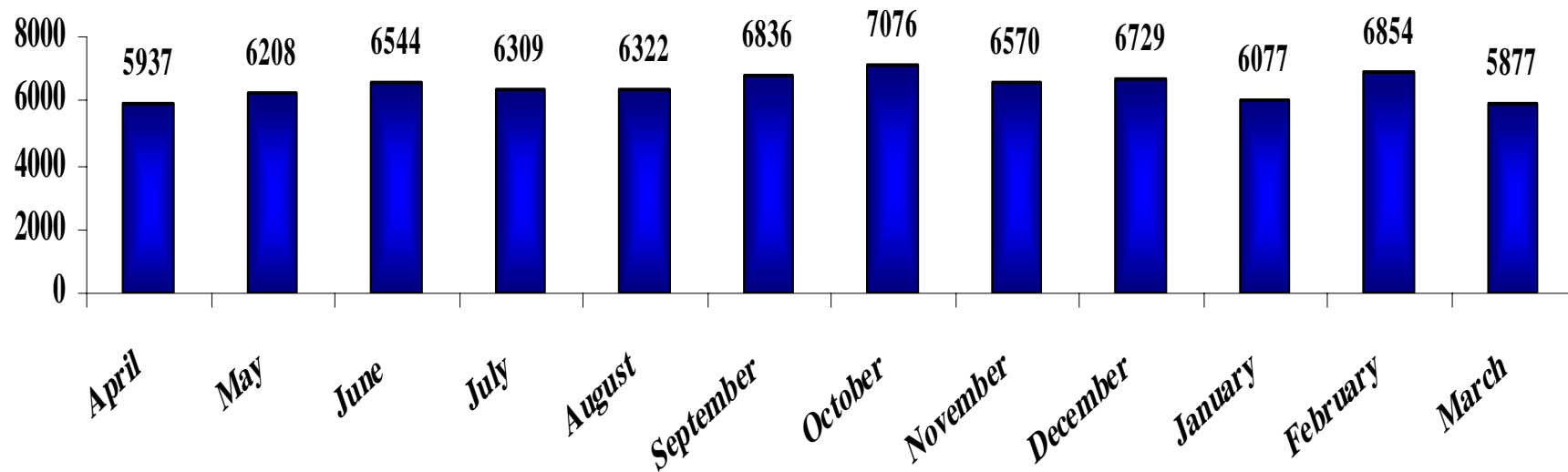
**NUMBER OF CLIENTS ADMITTED DURING
THE REPORTING PERIOD**

In patient discharge

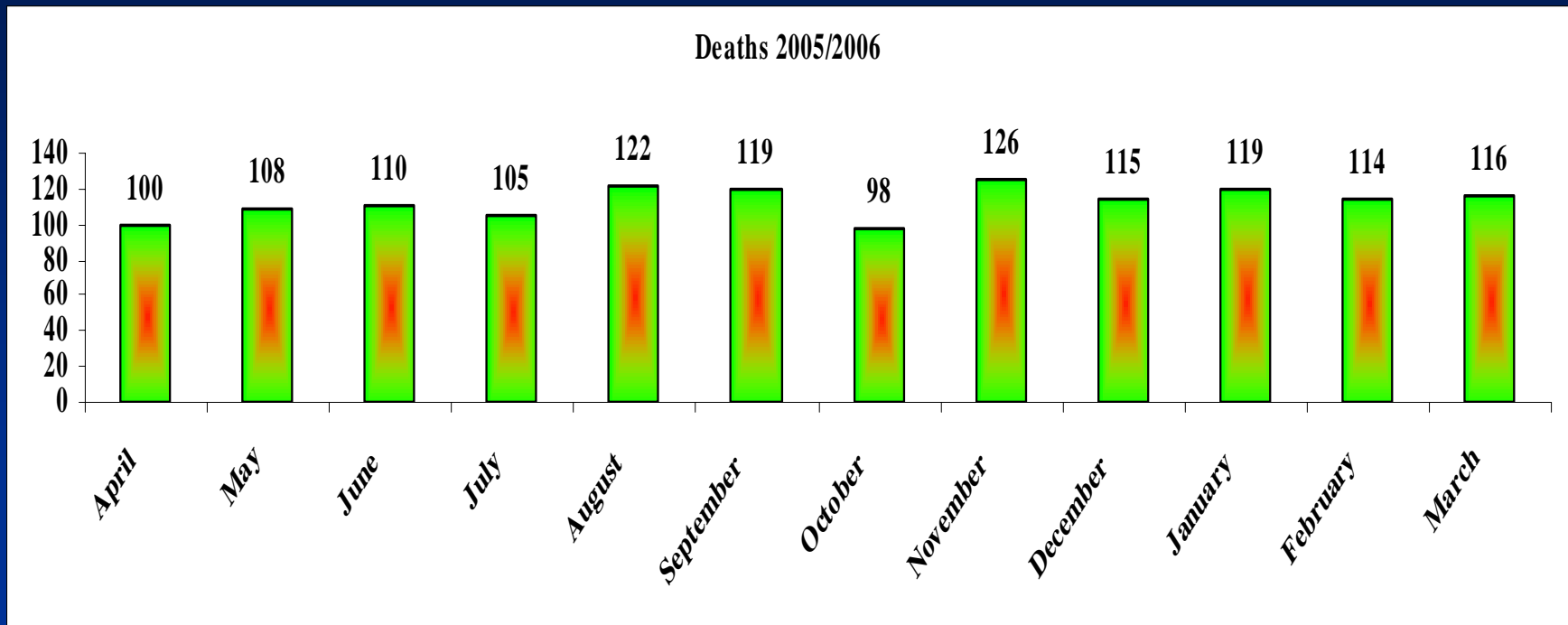


**Total number of patients discharged in
the during the reporting period**

Inpatient Days 2005/2006

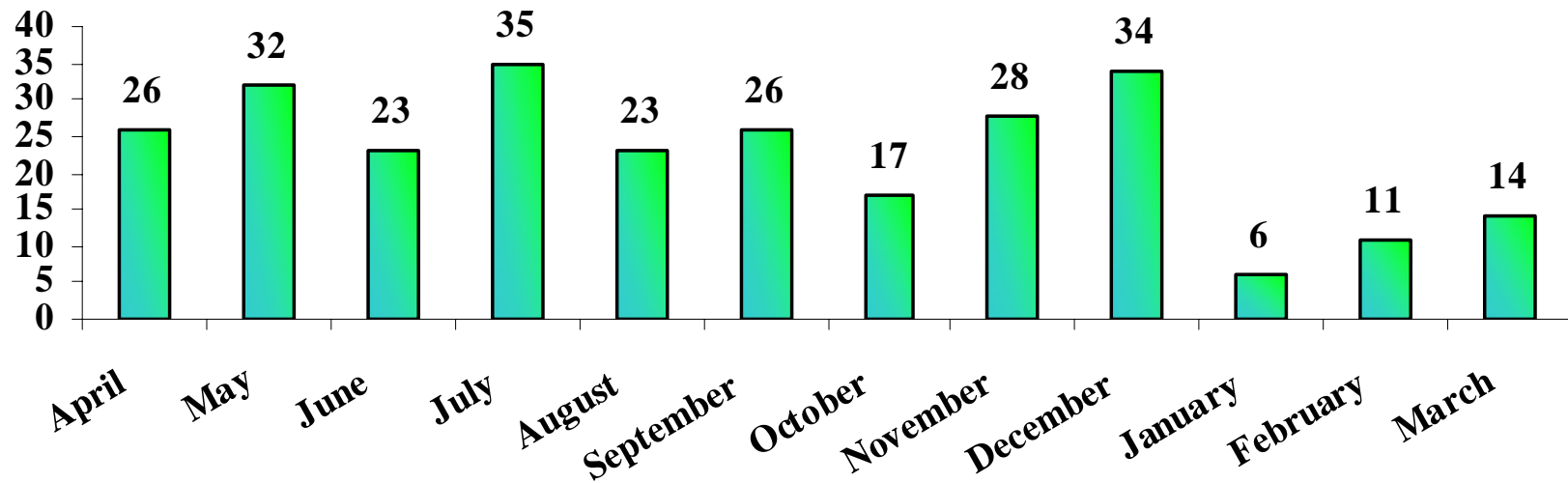


**THIS IS THE NUMBER OF PATIENTS THAT
STAY OVERNIGHT IN THE WARD.**



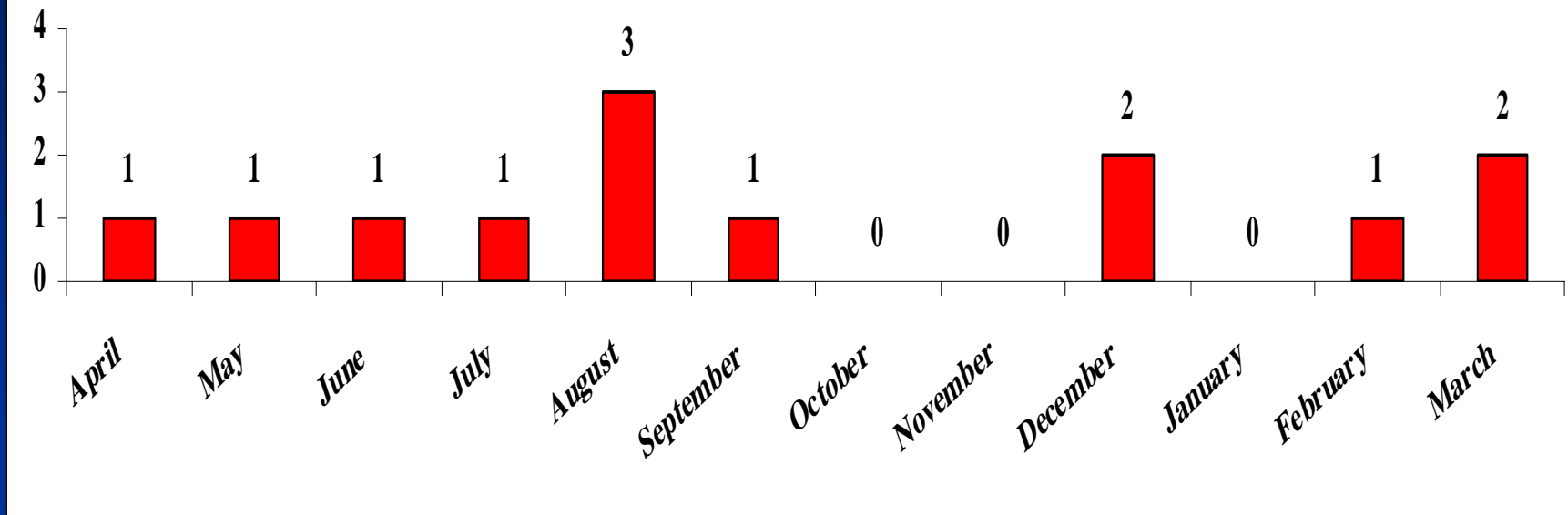
THE NUMBER OF PATIENTS WHO DIED IN THE WARD DURING REPORTING PERIOD.

Deaths under 5 years 2005/2006



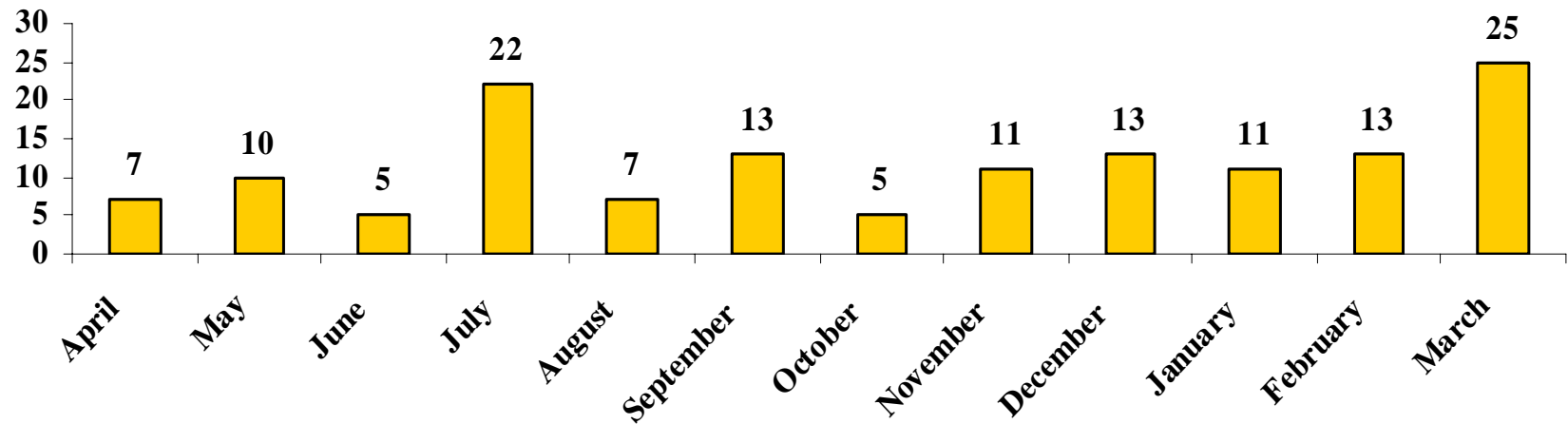
THE NUMBER OF PATIENTS UNDER 5 YEARS OF AGE WHO DIED IN THE WARD DURING REPORTING PERIOD

Maternal deaths 2005/2006

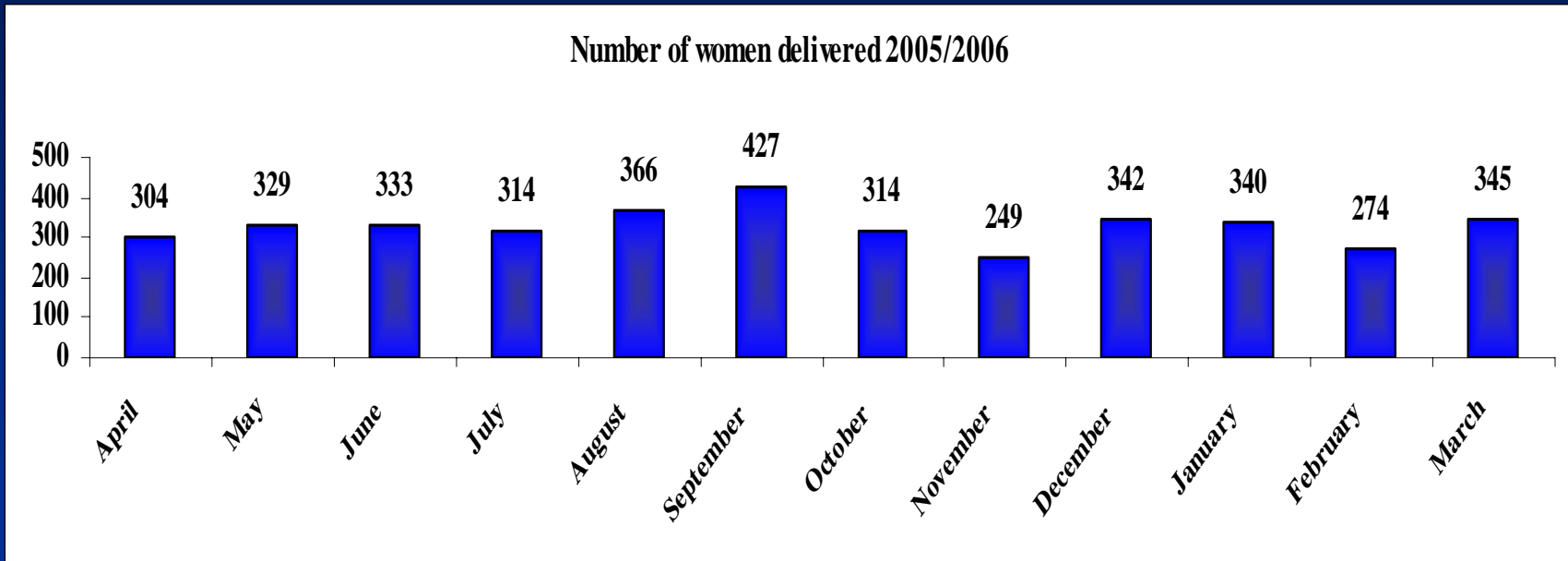


THE NUMBER OF WOMEN WHO DIED IN THE WARD WHILE PREGNANT DURING THE REPORTING PERIOD

Still- Births 2005/2006

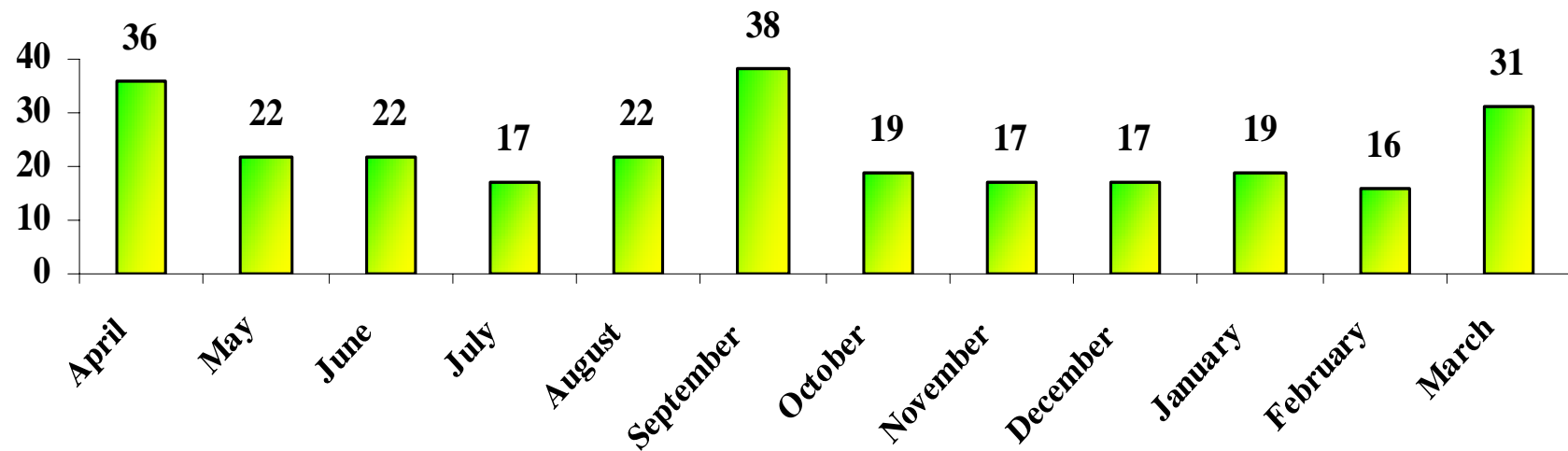


**TOTAL NUMBER OF BABIES BORN DEAD
DURING THE REPORTING PERIOD**



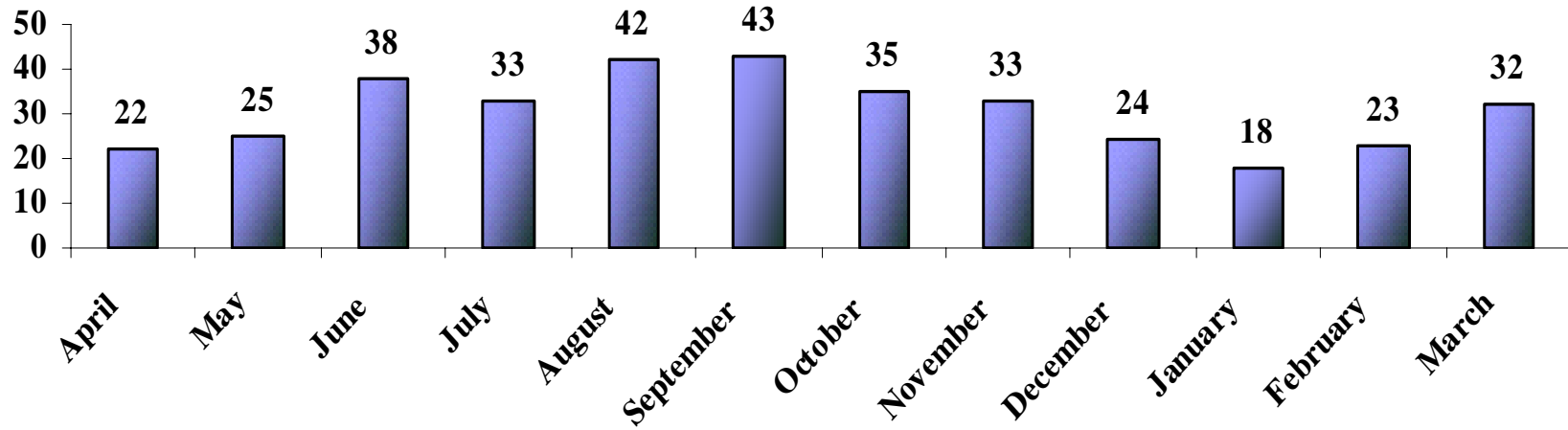
**TOTAL NUMBER OF WOMEN WHO DELIVERED
DURING THE REPORTING PERIOD**

Women more than 34 years - delivered 2005/2006



TOTAL NUMBER OF WOMEN WHO DELIVERED WHO IS 34 YEARS OF AGE OR OLDER DURING THE REPORTING PERIOD

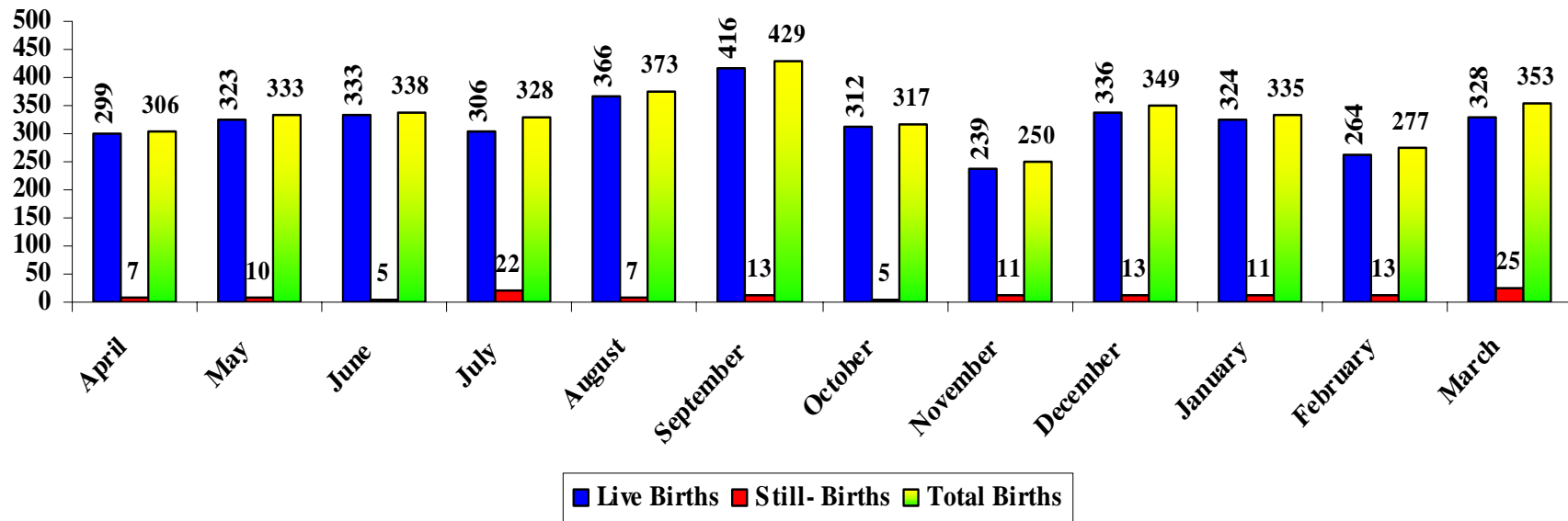
Women less than 18 years - delivered 2005/2006



TOTAL NUMBER OF WOMEN DELIVERED WHO IS LESS THAN 18 YEARS OF AGE DURING THE REPORTING PERIOD

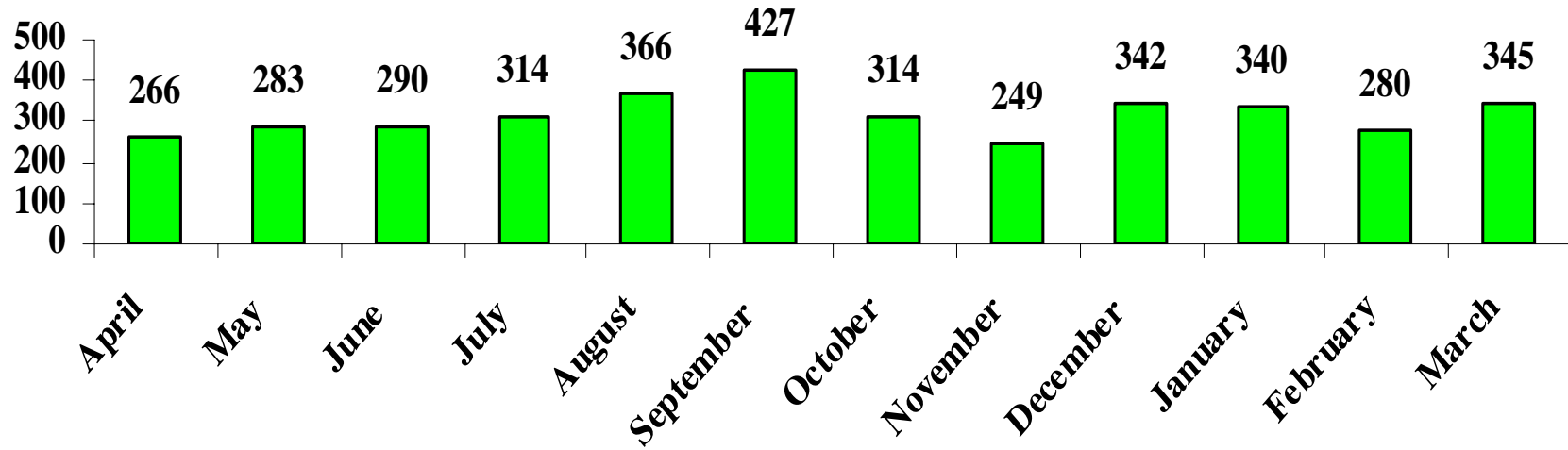


Births 2005/2006

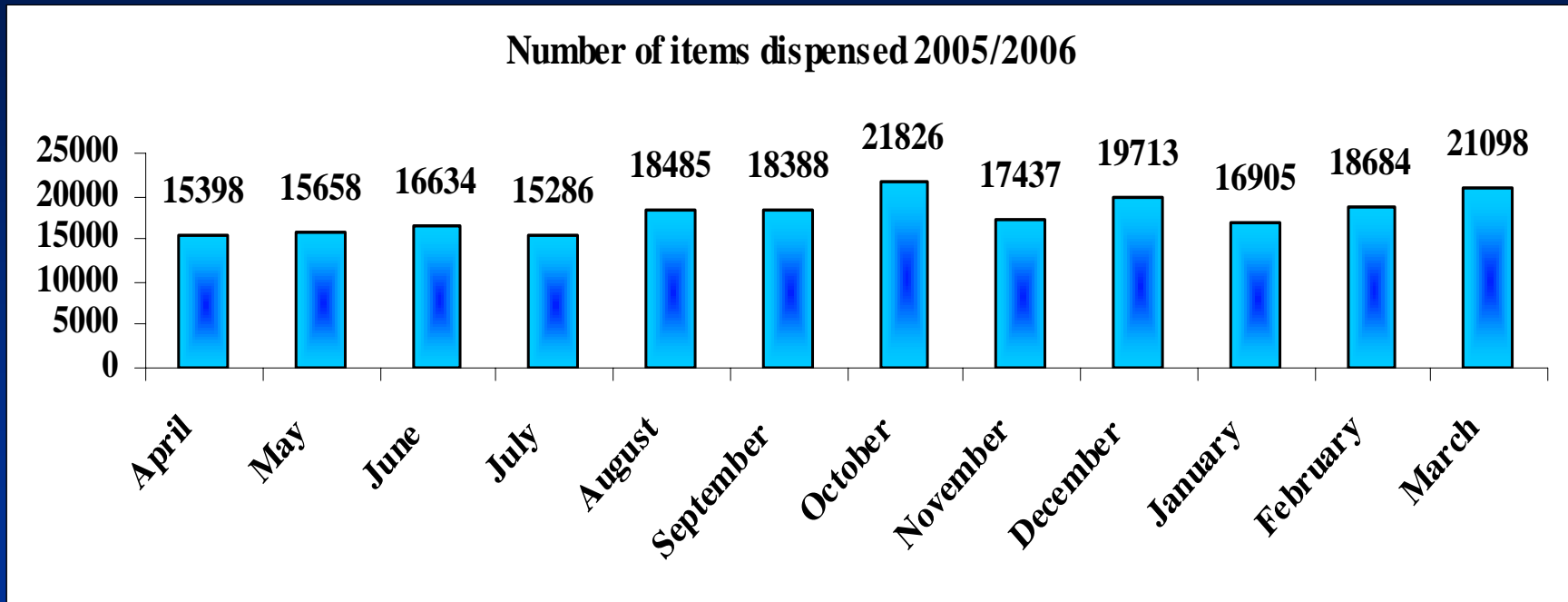


TOTAL NUMBER OF BABIES BORN DURING THE REPORTING PERIOD

Vit A supplement to women delivered 2005/2006

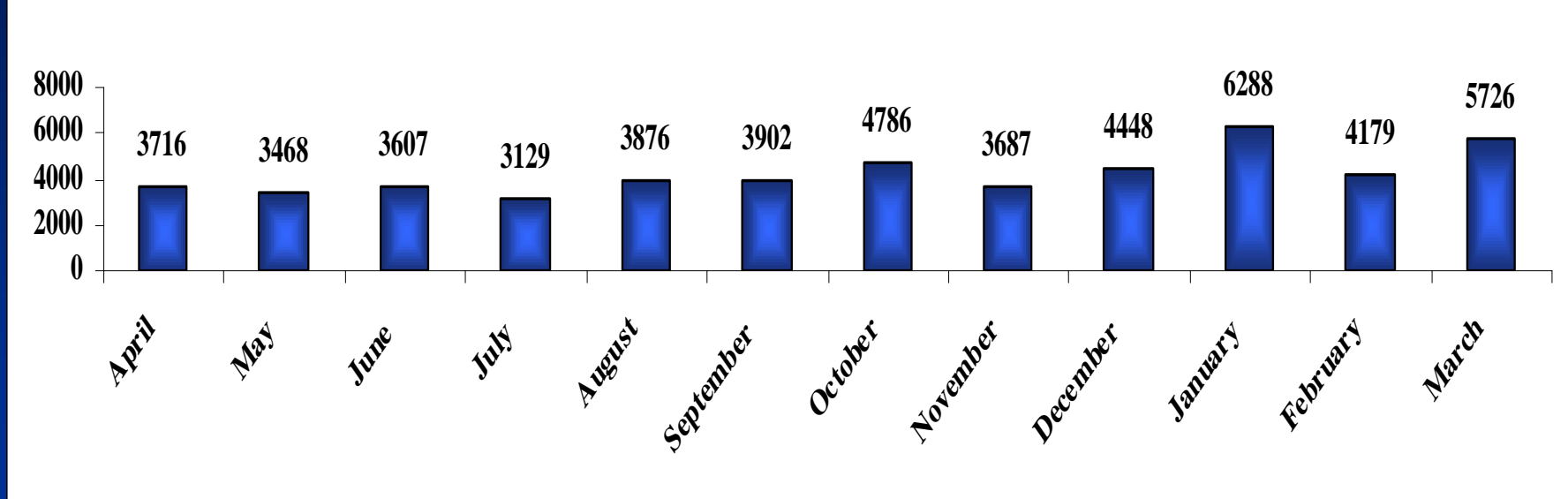


TOTAL NUMBER OF MOTHERS GIVEN VIT. A DURING THE REPORTING PERIOD

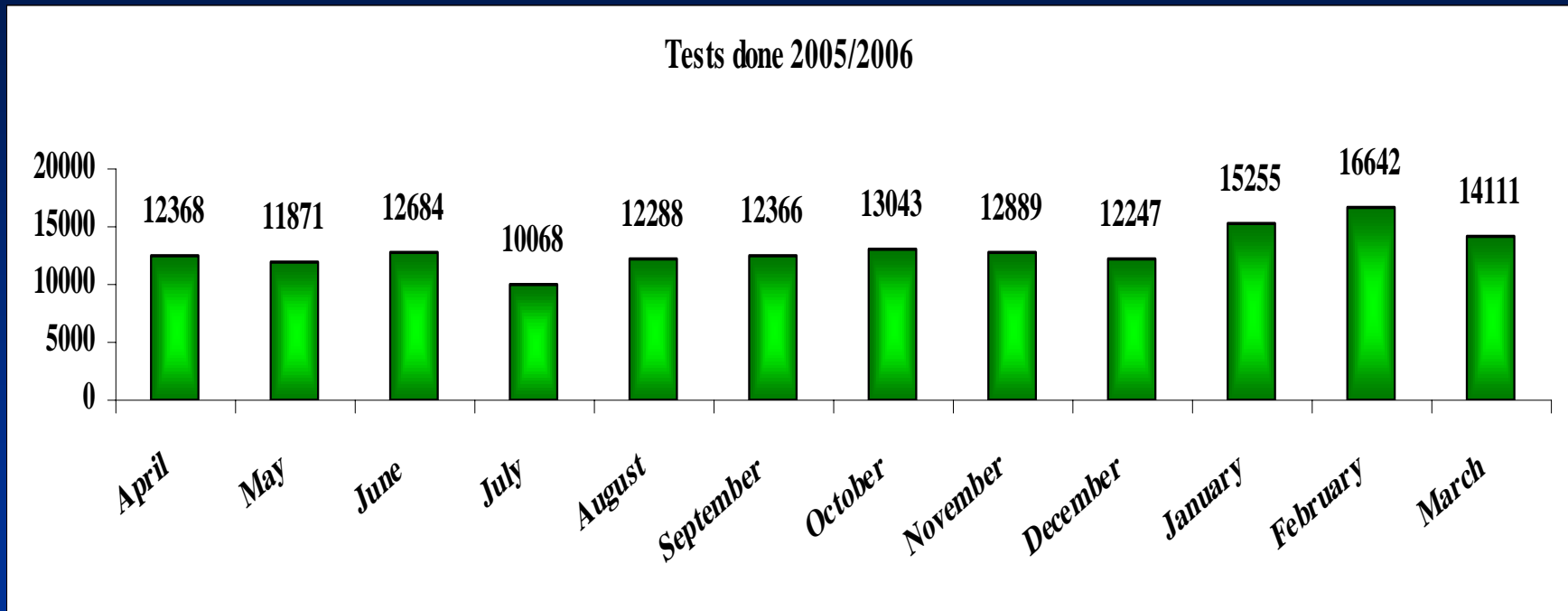


TOTAL NUMBER OF ITEMS ISSUED TO PATIENTS DURING THE REPORTING PERIOD

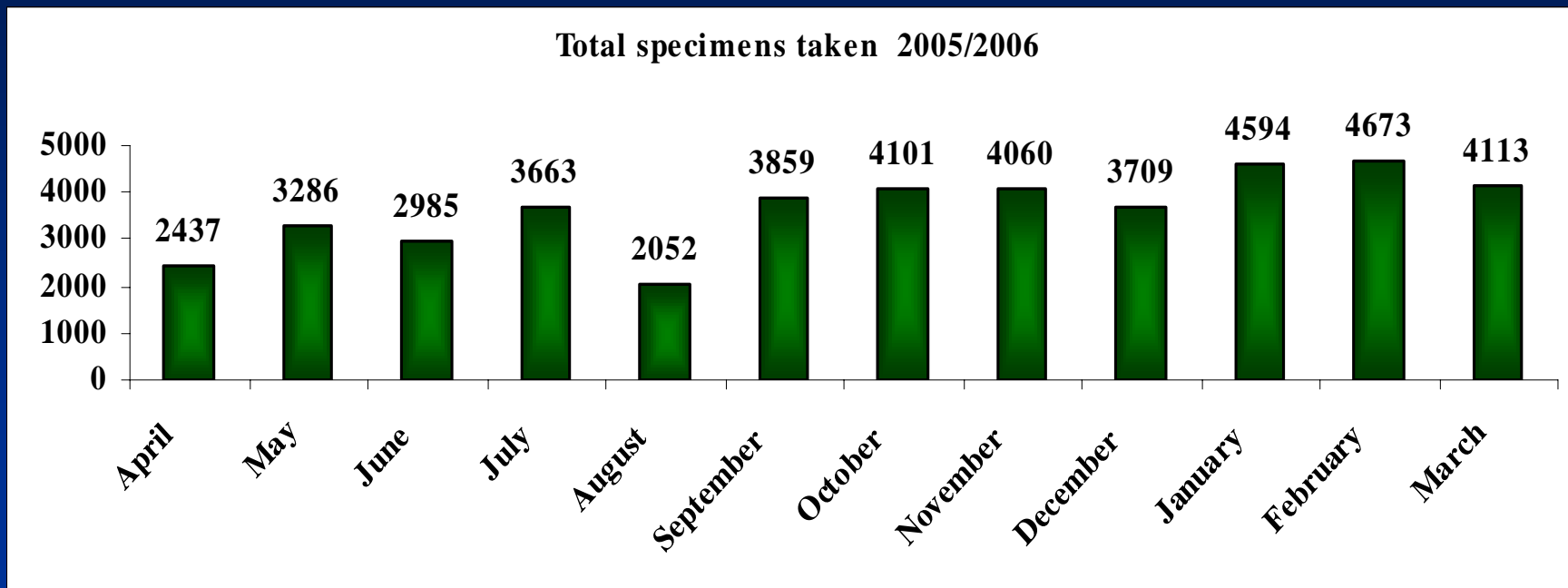
Number of prescriptions 2005/2006



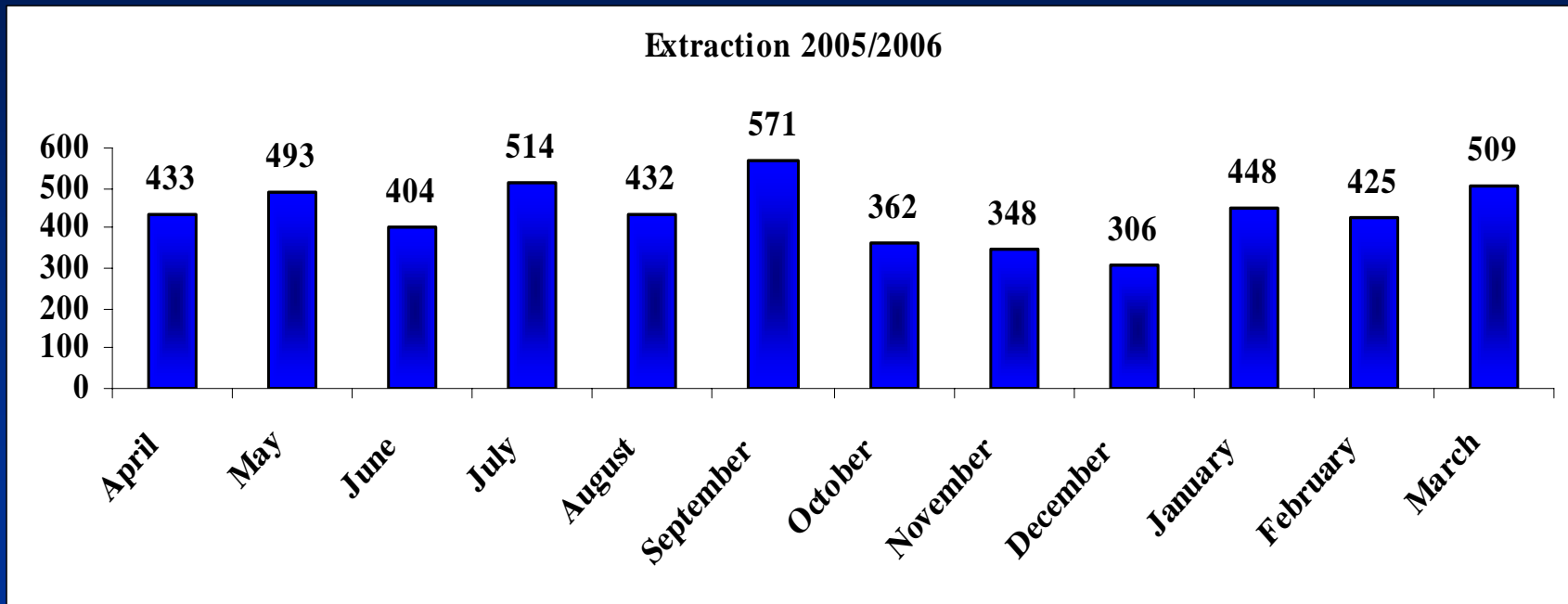
**TOTAL NUMBER OF PRESCRIPTIONS RECEIVED AT
THE PHARMACY INCLUDING CHRONIC CASES**



**TOTAL TEST THAT ARE DONE AT THE HOSPITAL INCLUDING
SPECIMENS RECEIVED FROM CLINICS**

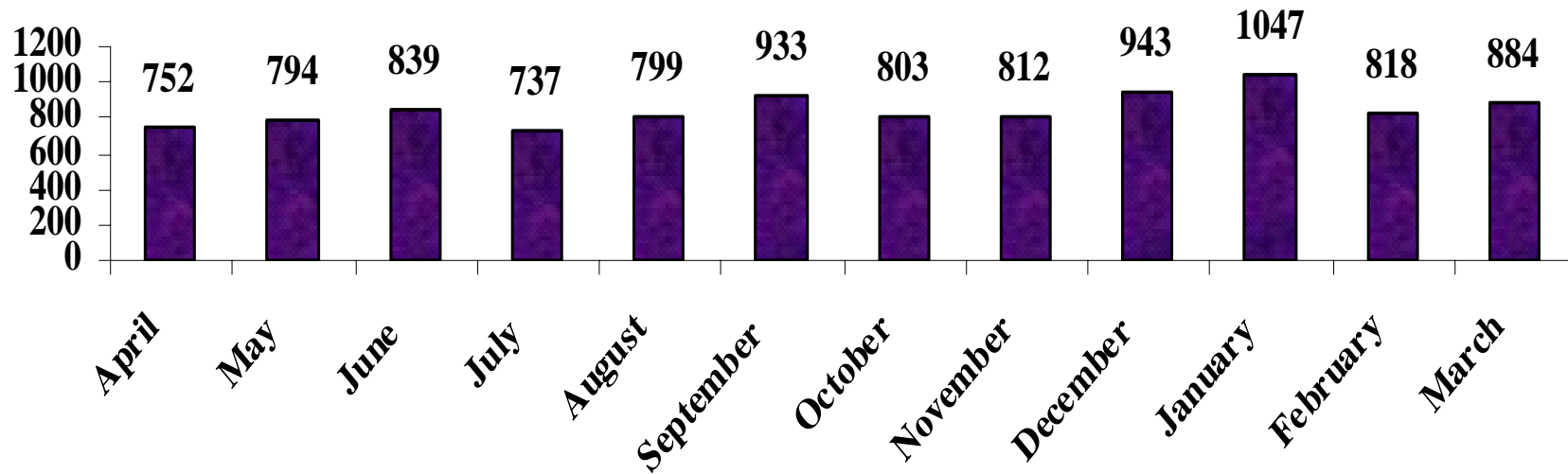


TOTAL NUMBER OF SPECIMENS TAKEN AT THE HOSPITAL



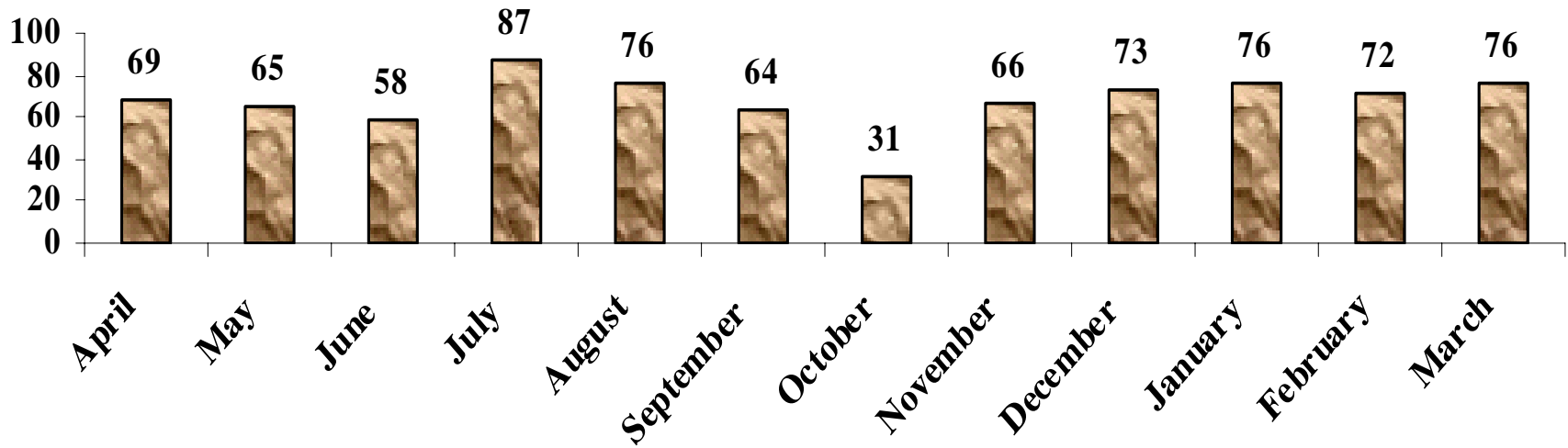
TOTAL NUMBER OF PATIENTS WHO REMOVED TEETHS

Number of X-Rays 2005/2006

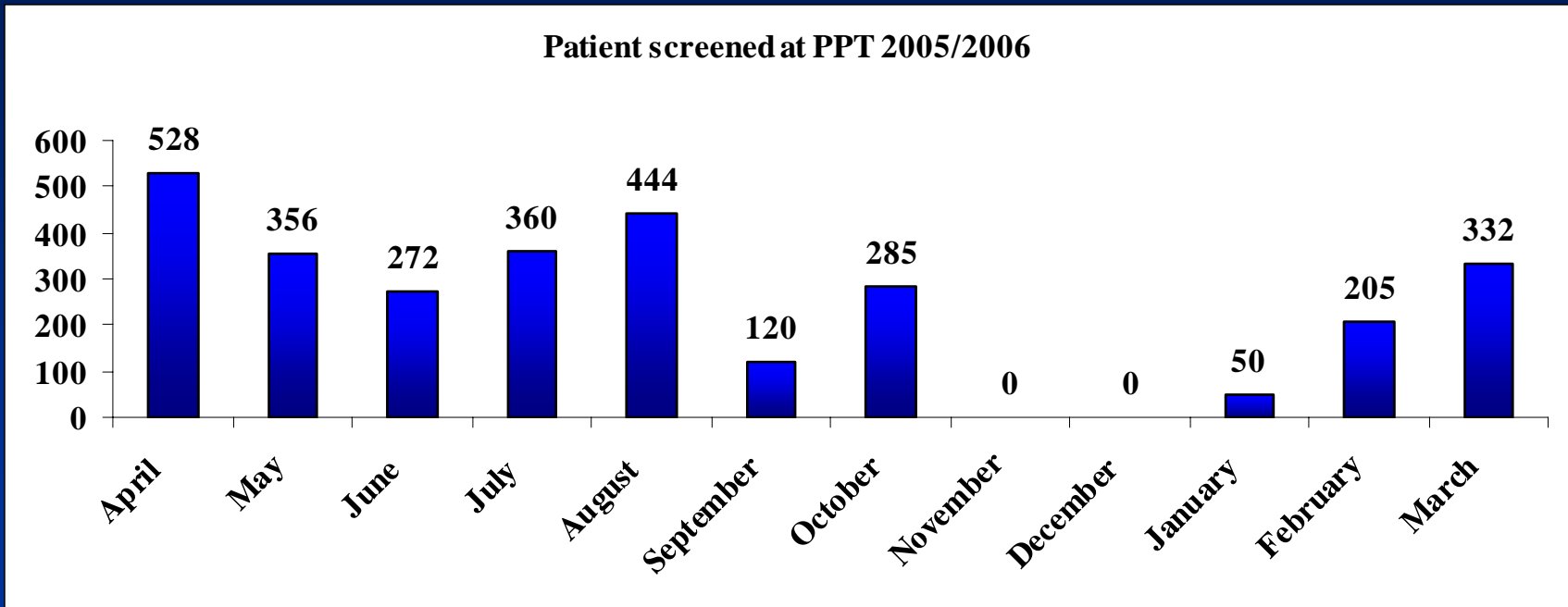


TOTAL NUMBER OF X- RAYS DONE DURING THE REPORTING PERIOD

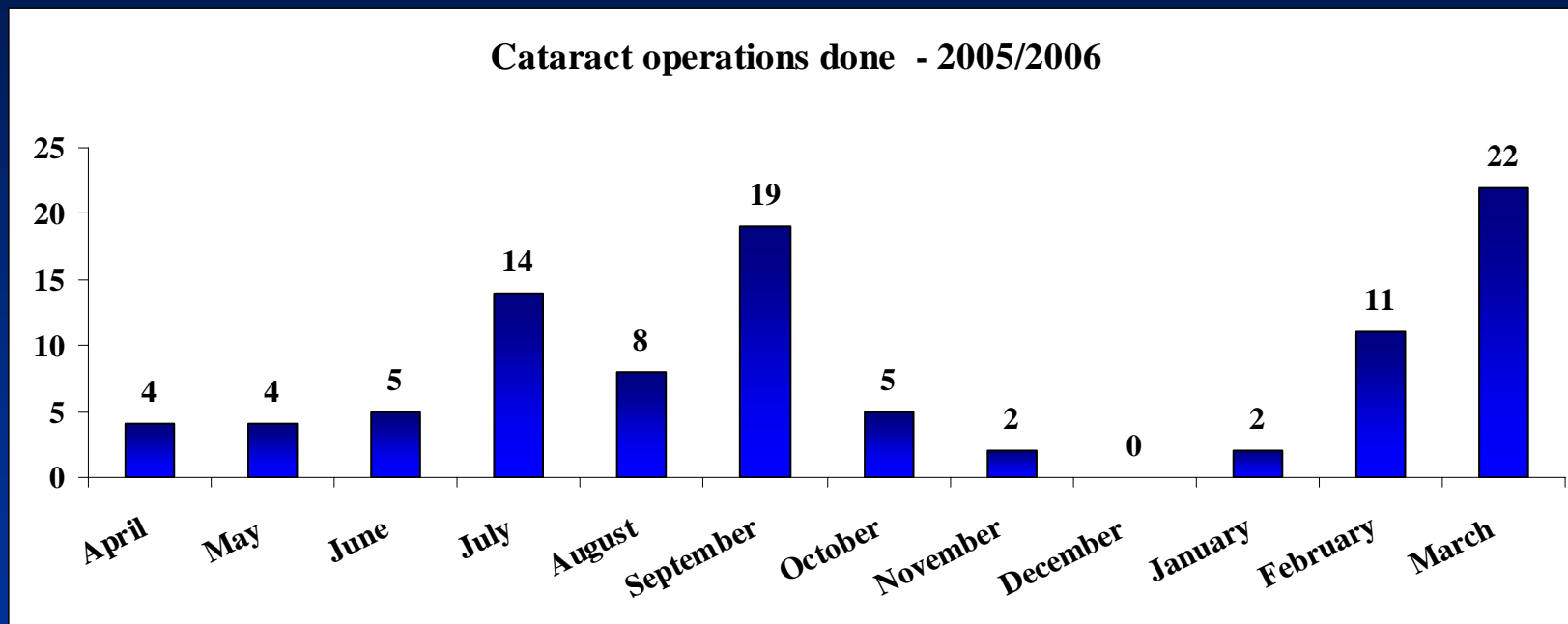
Total operations 2005/2006



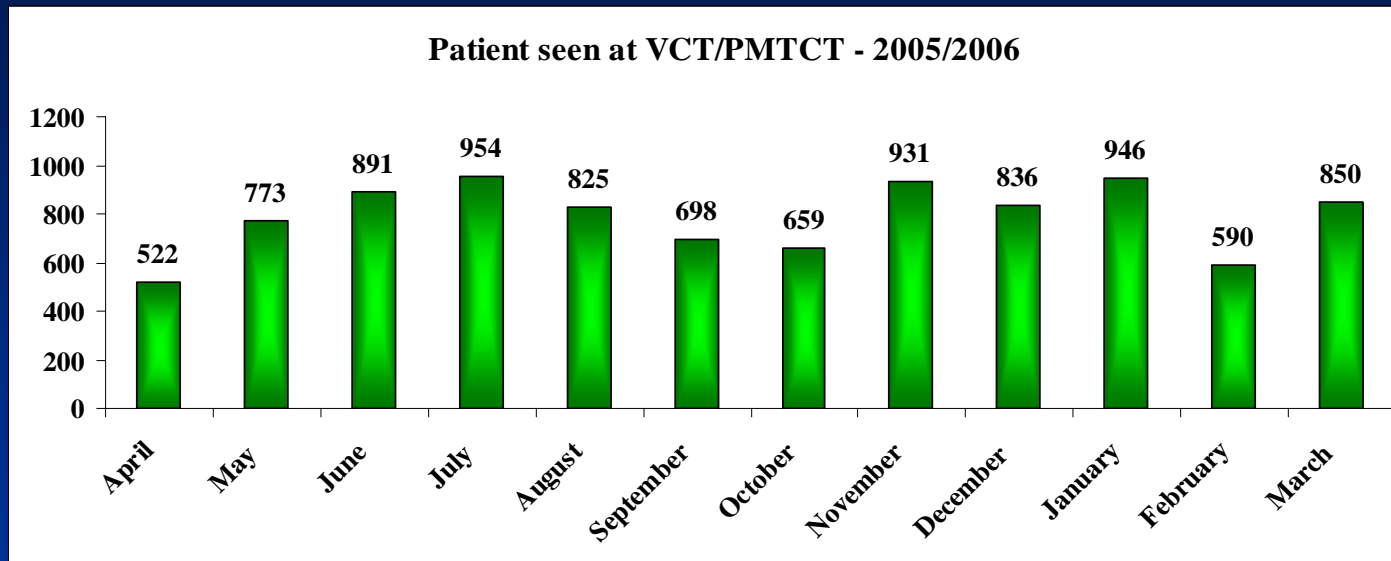
TOTAL NUMBER OF OPERATION DONE DURING THE REPORTING PERIOD



**TOTAL NUMBER OF PATIENTS SCREENED AT PENSION
PAY POINT DURING THE REPORTING PERIOD**

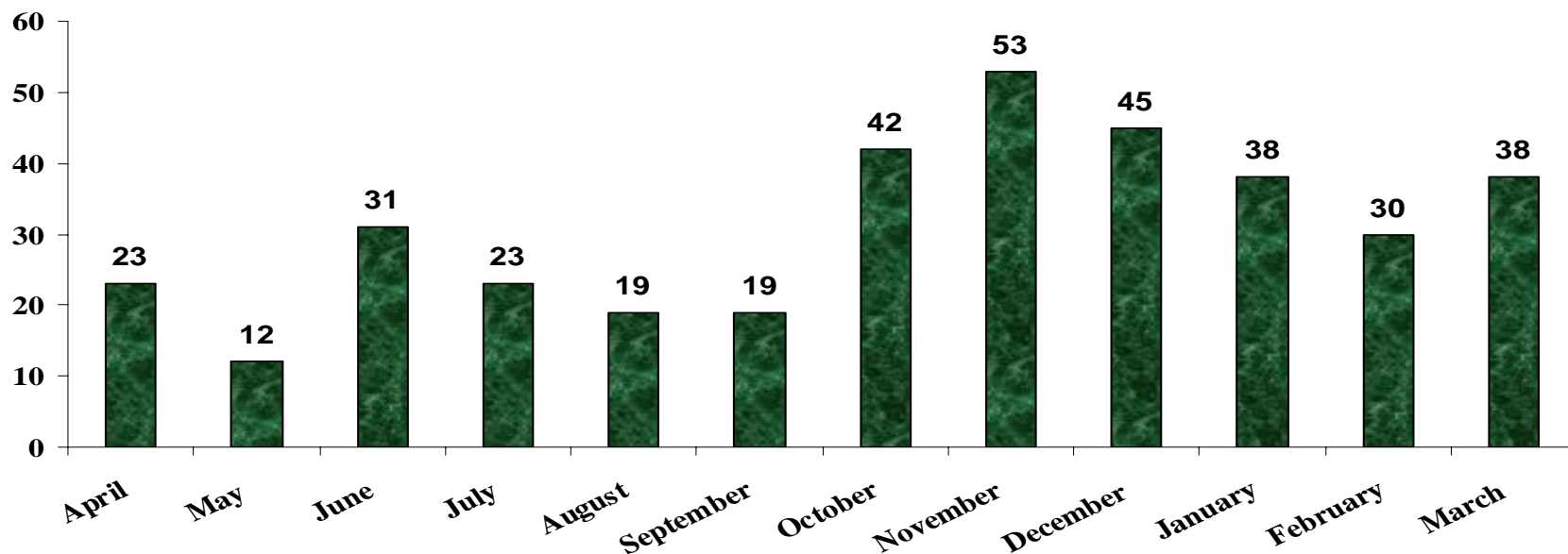


**TOTAL NUMBER OF CATARACT OPERATIONS DONE
DURING THE REPORTING PERIOD**



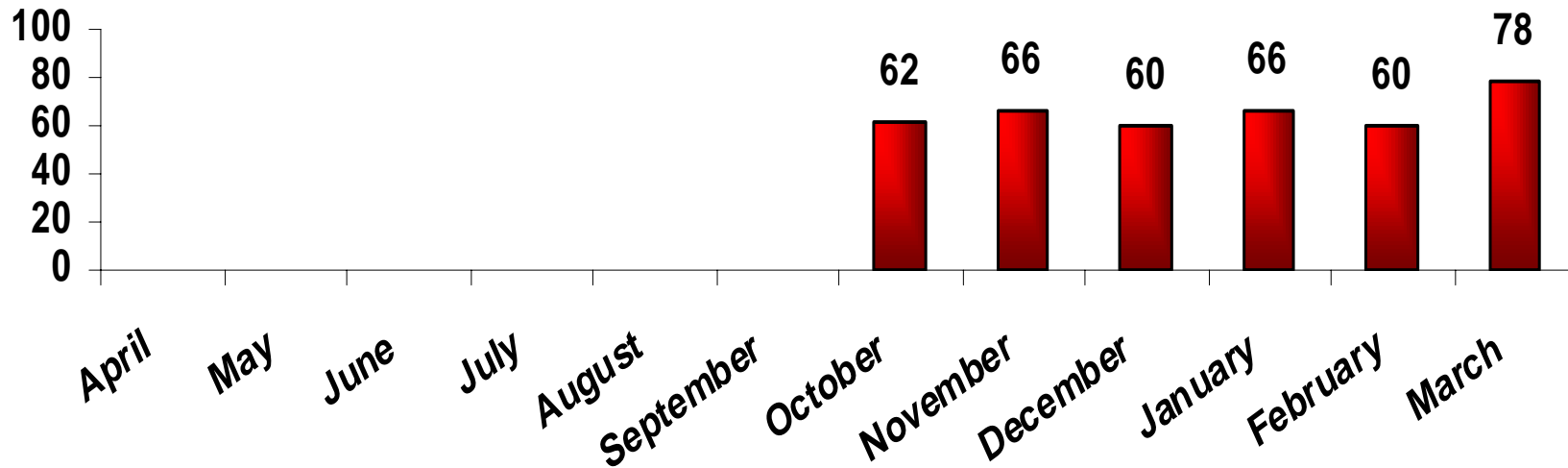
**NUMBER OF PATIENTS SEEN AT VCT/PMTCT DURING
THE REPORTING PERIOD**

Patient on ARVs - 2005/2006



THIS IS THE NUMBER OF PATIENTS ON ARV DURING THE REPORTING PERIOD

Clients seen at Crisis centre - 2005/2006



NUMBER OF CLIENTS SEEN AT CRISIS CENTRE IN THE HOSPITAL DURING THE REPORTING PERIOD

HOSPITAL INDICATORS AND EXPENDITURE

Months	Occupancy Rate	Death rate	Average length of stay	Expenditure	Cost per patient
April	57	10	6	5,106,886	548
May	57	11	6	6,334,399	666
June	63	10	5	5,641,781	564
July	58	10	6	6,187,107	662
August	58	11	6	5,782,719	588
September	65	11	6	7,112,880	710
October	65	8	6	5,854,953	565
November	63	12	7	6,165,336	634
December	62	11	6	6,308,718	667
January	56	10	5	6,474,333	695
February	65	10	6	7,077,199	710
March	54	10	5	6,100,000	747
Total				74,146,221	7,756
Average	60	10	6	6,178,852	646

