

Charles Johnson Memorial Hospital Annual report



Period : April 2006 to March 2007
Compiled by : Japhet Buthelezi

ACKNOWLEDGEMENT

- **The Information presented in this report is based on the data derived from clinics and hospitals within the Nqutu subdistrict . It has to be used by the decision makers within the subistrict for planning and management of the Nqutu sub-District.**
- **We would like to thank each and every person who gave of his or her time in collection, analysis, and interpretation of the information that is contained in this report.**

**Facility Information Officer(CJM Hospital)
Japhet Buthelezi**



INTRODUCTION

- C.J.M hospital is a district hospital that is committed to providing comprehensive community – centred quality care services in collaboration with other key role-players through the district health system approach.
- C.J.M hospital has 349 usable beds and is providing health care services to 158724 catchment's population .CJM Hospital serves as a referral hospital for eleven Primary Health Care clinics namely, Felani, Hlathidam, Isandlwana, Kwanyezi, Mangeni, Masotsheni, Mkhonjane, Nkande, Ntinini, Nondweni and Gateway clinic. There are three mobile teams that cover a 34 clinic points.

- ***THE HOPITAL***

-
- ***C.J.M hospital was named after Archdeacon Charles Johnson, the Director of St Augustine mission at Masotsheni. Although he did not found a hospital himself, he was apparently renowned as puller of rotten teeth.***
- ***In 1936 the hospital moved 20km to Nqutu .The purpose of the move was to place the hospital in a logical site for future development .Dr Anthony and Maggie Baker came in July 1945 and it was these two who were instrumental in developing this hospital .On the 30 July 1976 the hospital was handed over to the South African government.***



SERVICES OFFERED

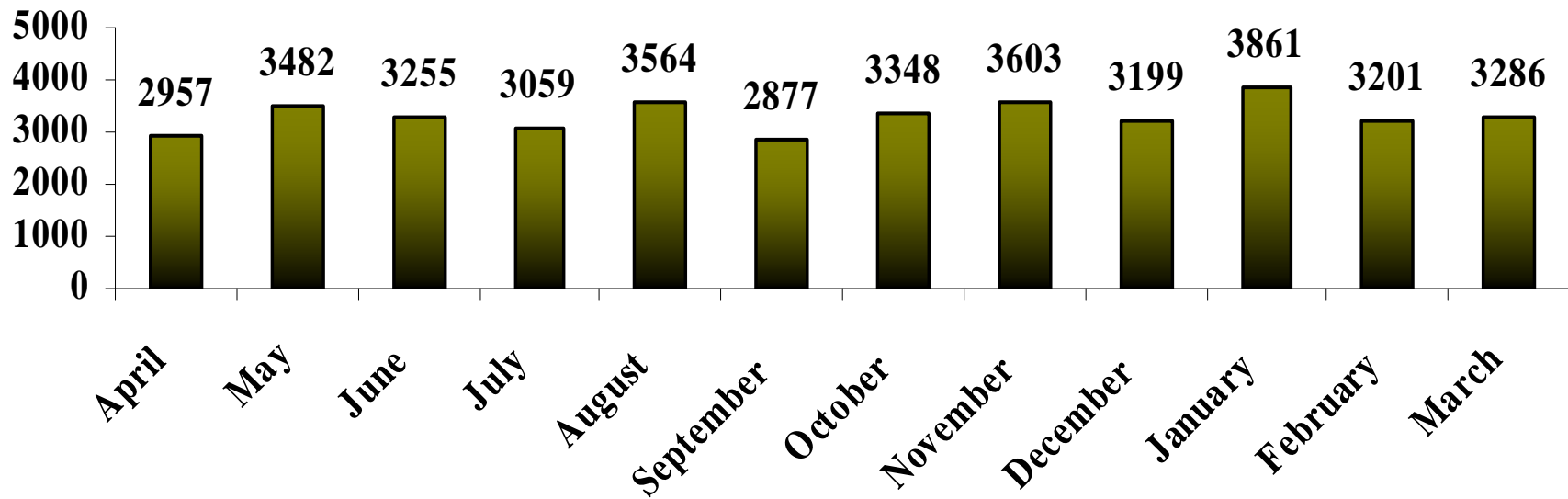
- **PHC clinic services**
- **24Hours Emergency /Casualty Services**
- **Medical in patient services**
- **General Out Patient Services**
- **Maternity services**
- **Surgical In patient services**
- **Physiotherapy service**
- **Operating Theatre**

- **X-Ray services**
- **Dental services**
- **Laboratory services**
- **Pharmaceutical services**
- **Paediatric inpatient services**
- **T.B. treatment inpatient**
- **Mental health services**
- **VCT/ PMTCT**
- **Dietician Services**
- **ARV Clinic services**

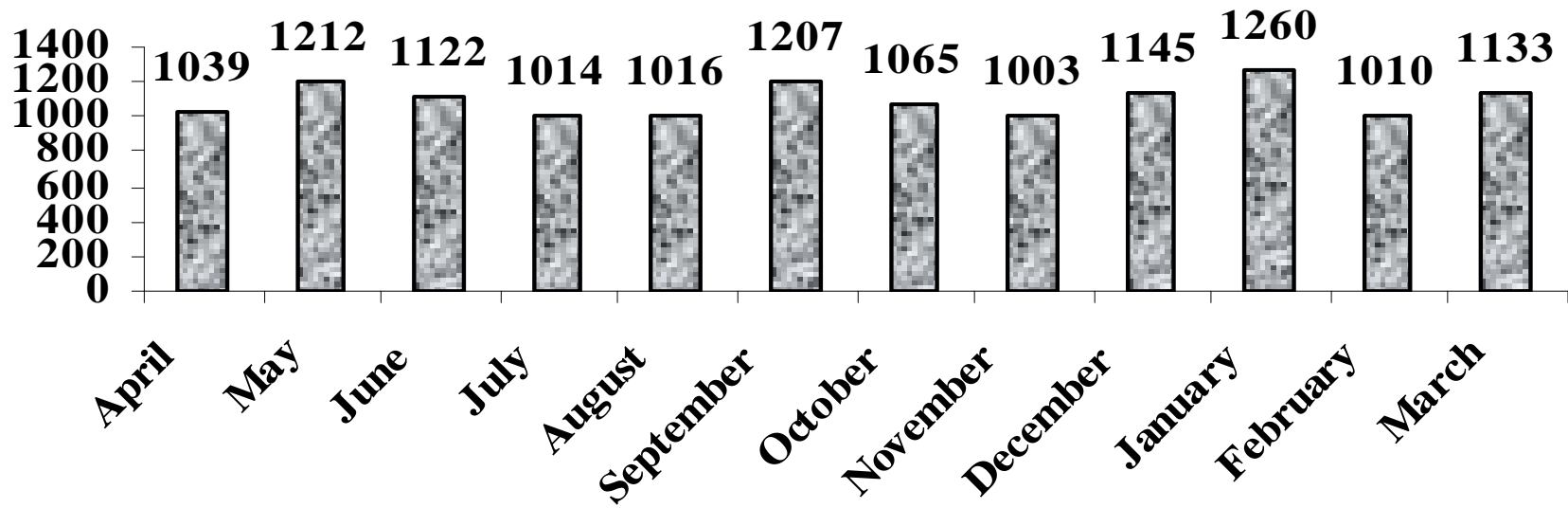
HOSPITAL PERFORMANCE INDICATORS AS AT MARCH 2007

- **Bed occupancy rate - 60%**
- **Average length of stay - 6 days**
- **Cost per patient per day inpatient- R912.00**
- **Cost per patient per day outpatient- R152 .00**
- **Death rate - 10%**
- **EPI coverage - 85%**
- **Waiting times – OPD > 2hrs**
Pharmacy > 30Mniutes

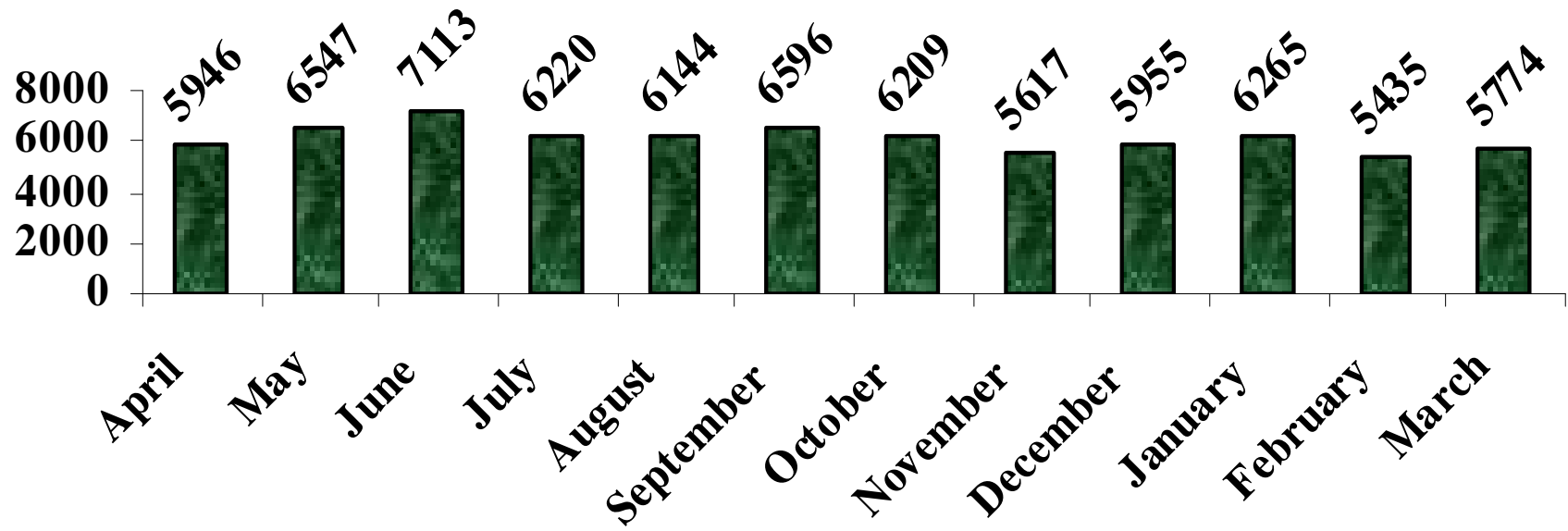
Total OPD Headcount all ages



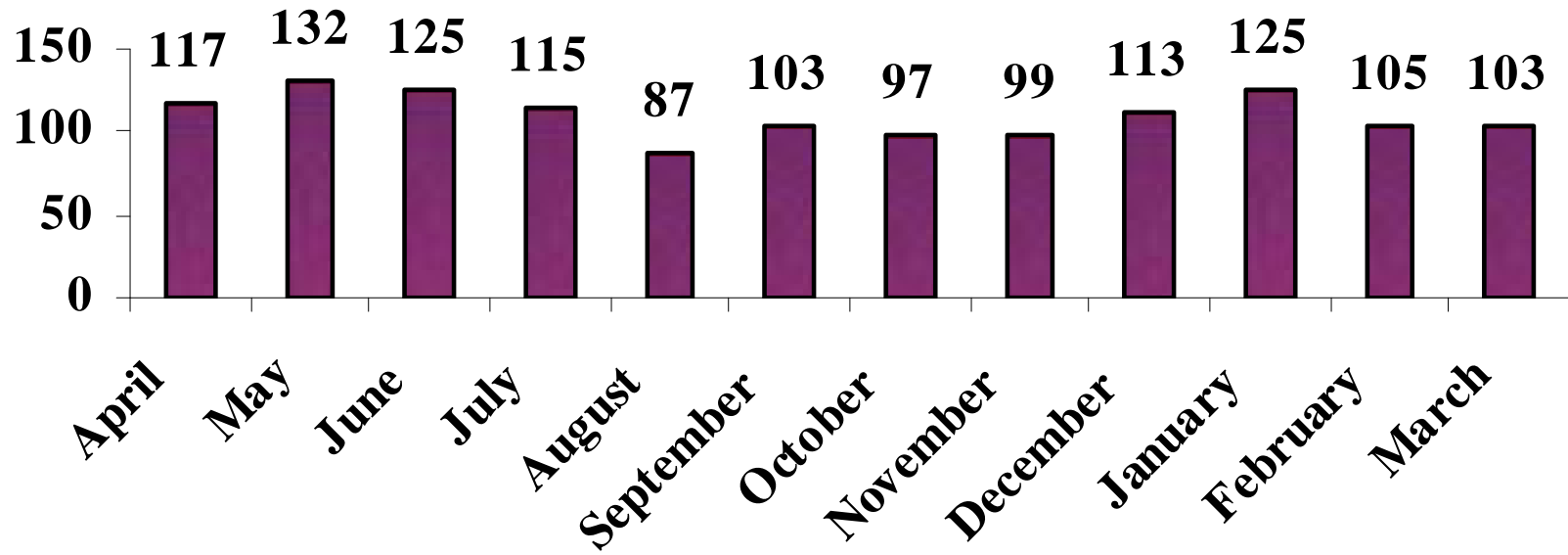
Admissions



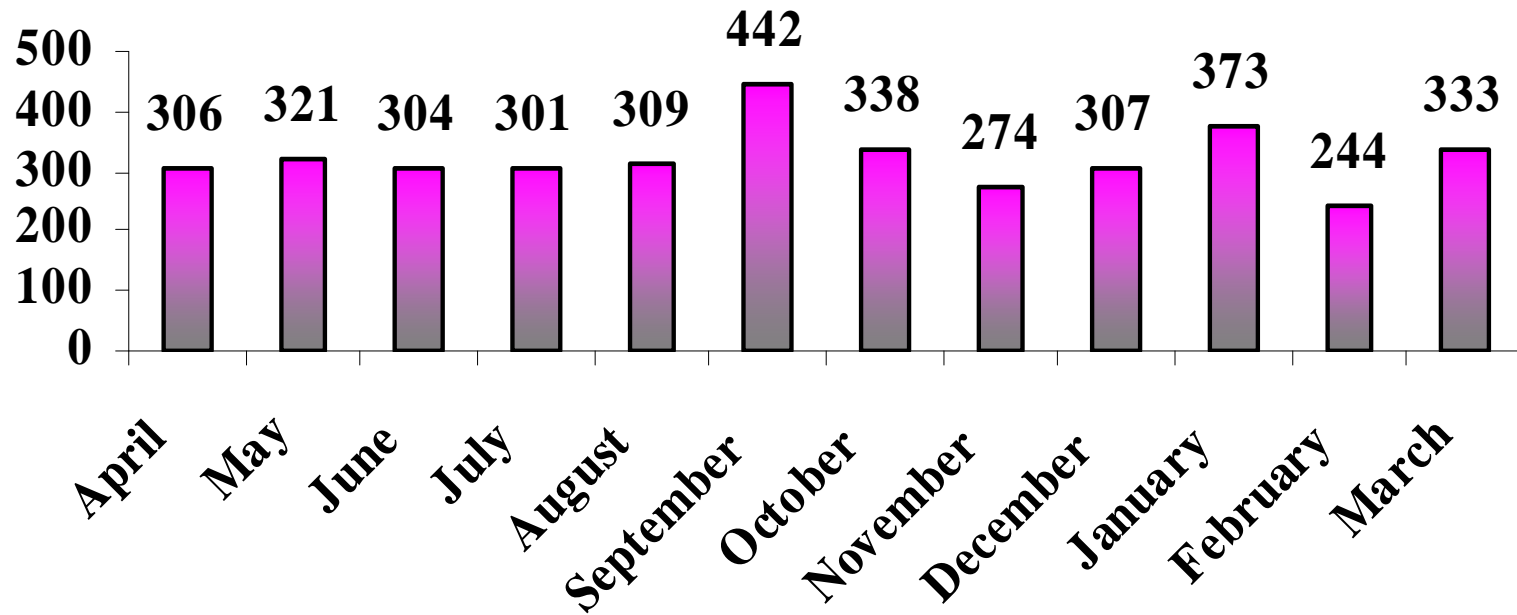
Inpatient Days



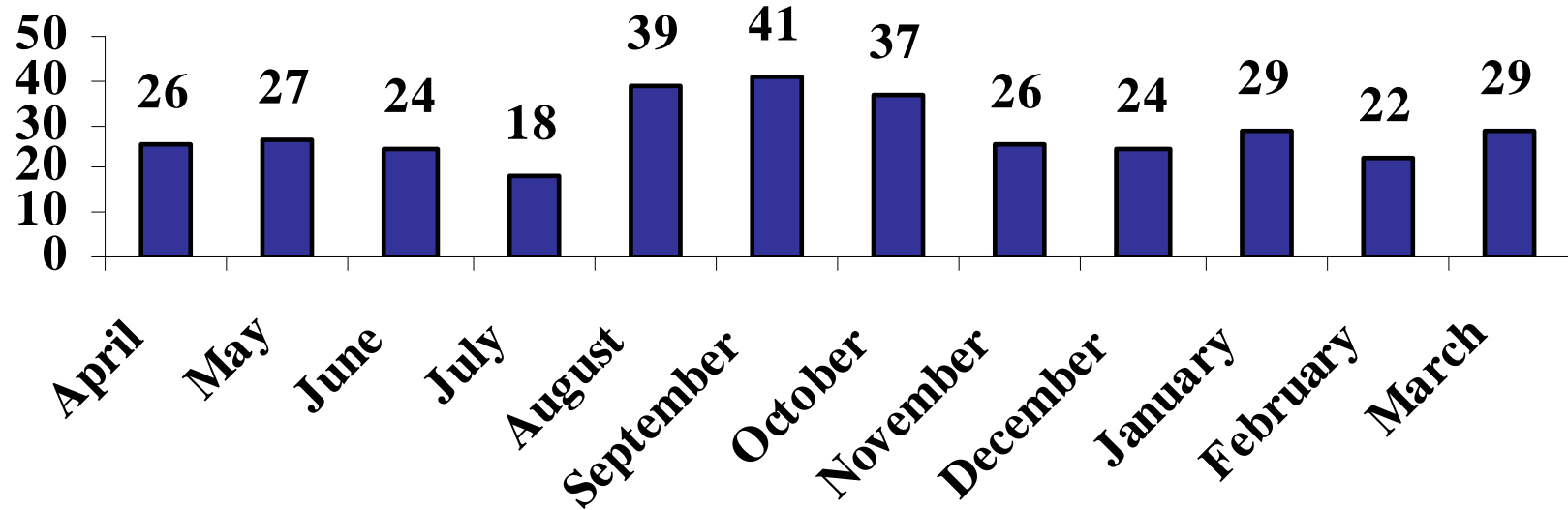
Deaths



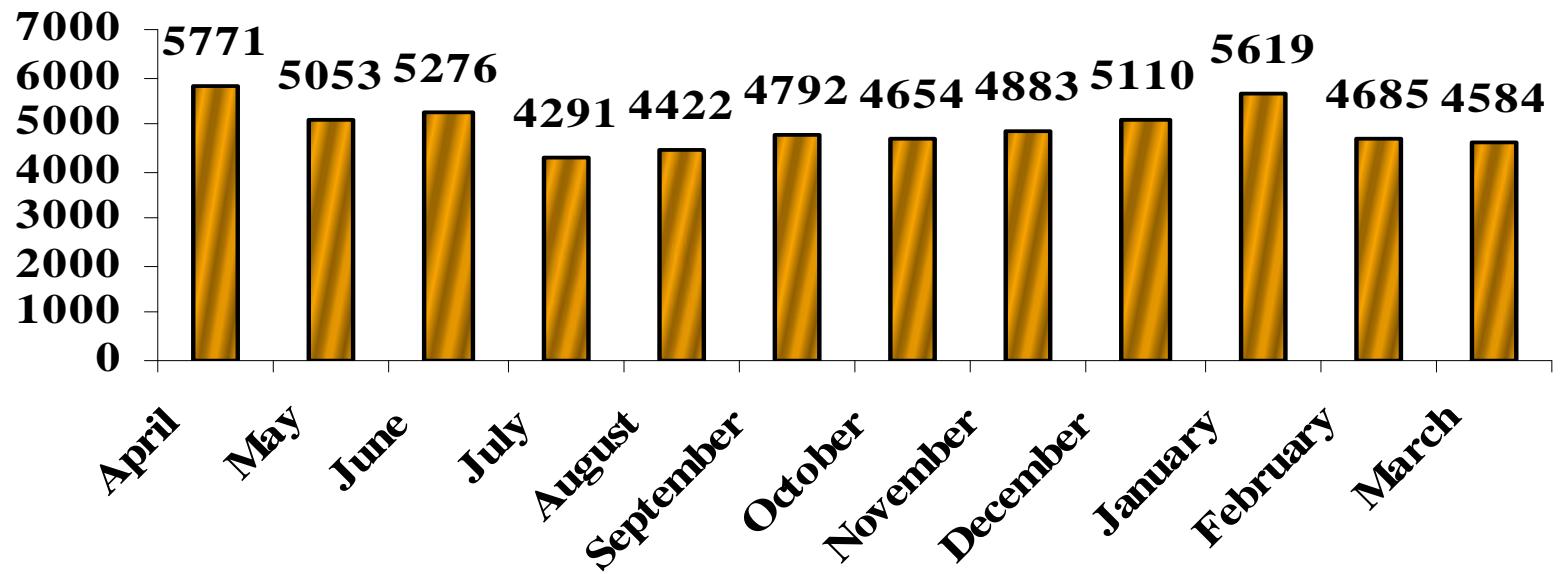
Number of women delivered



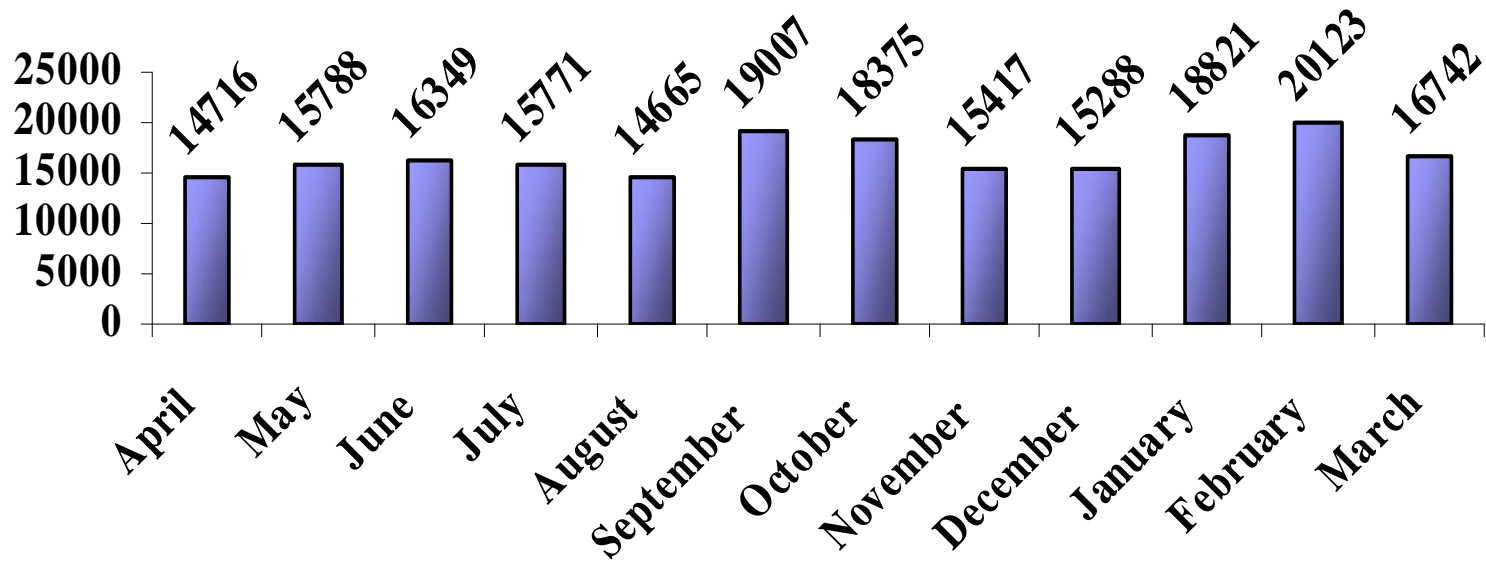
Women less than 18 years - delivered



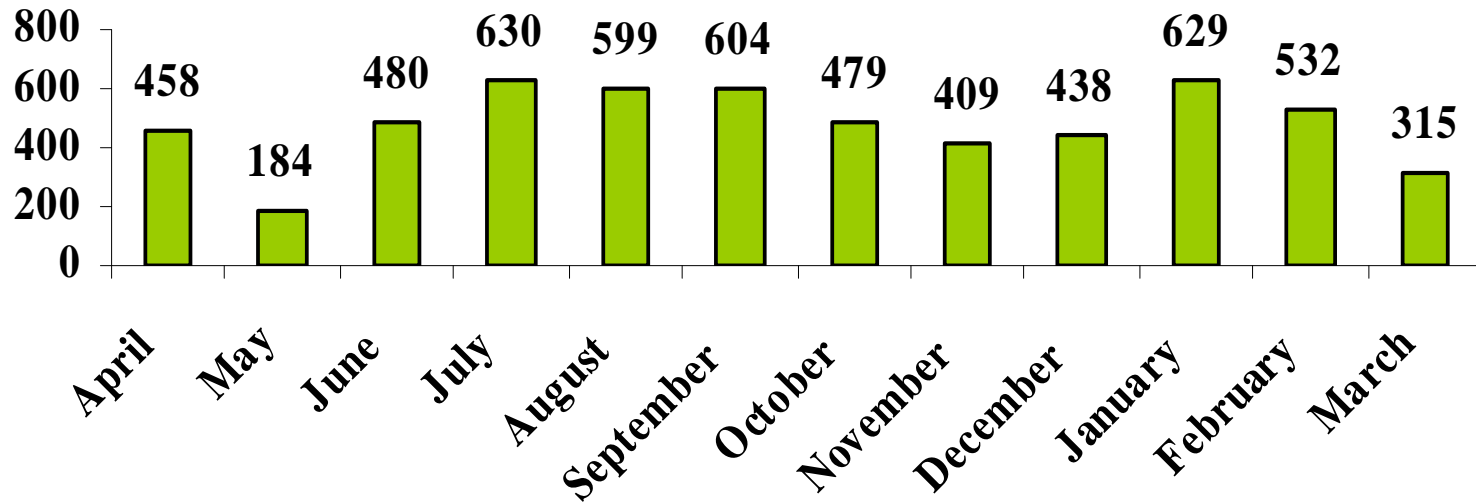
Number of prescriptions



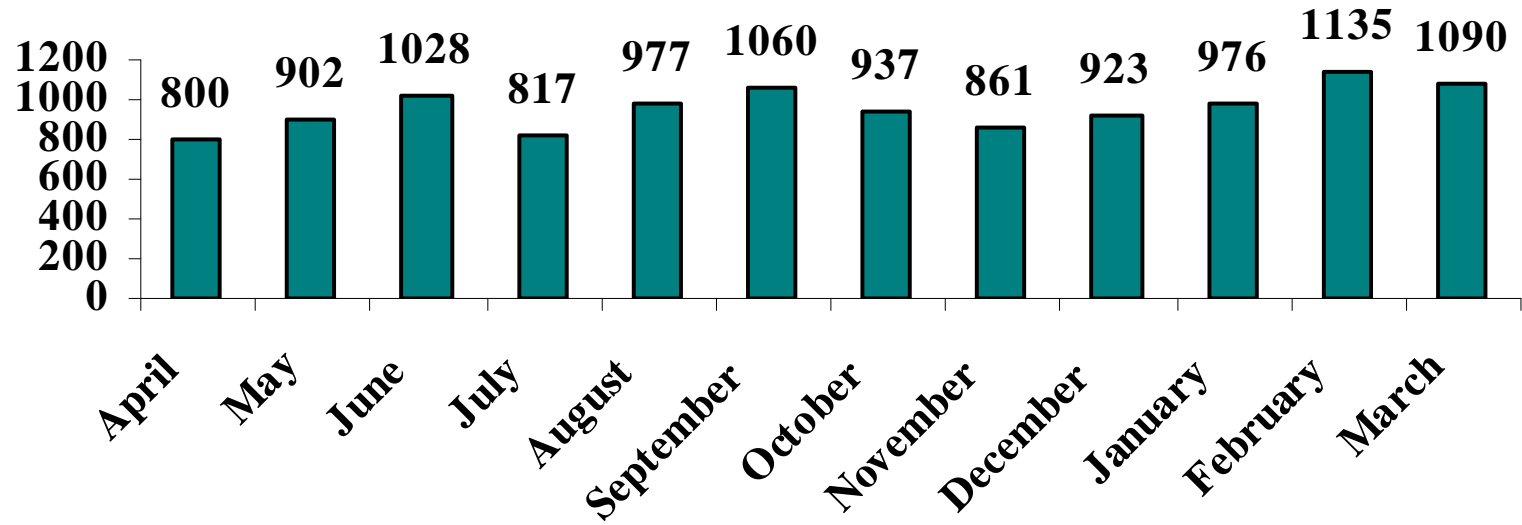
Tests done



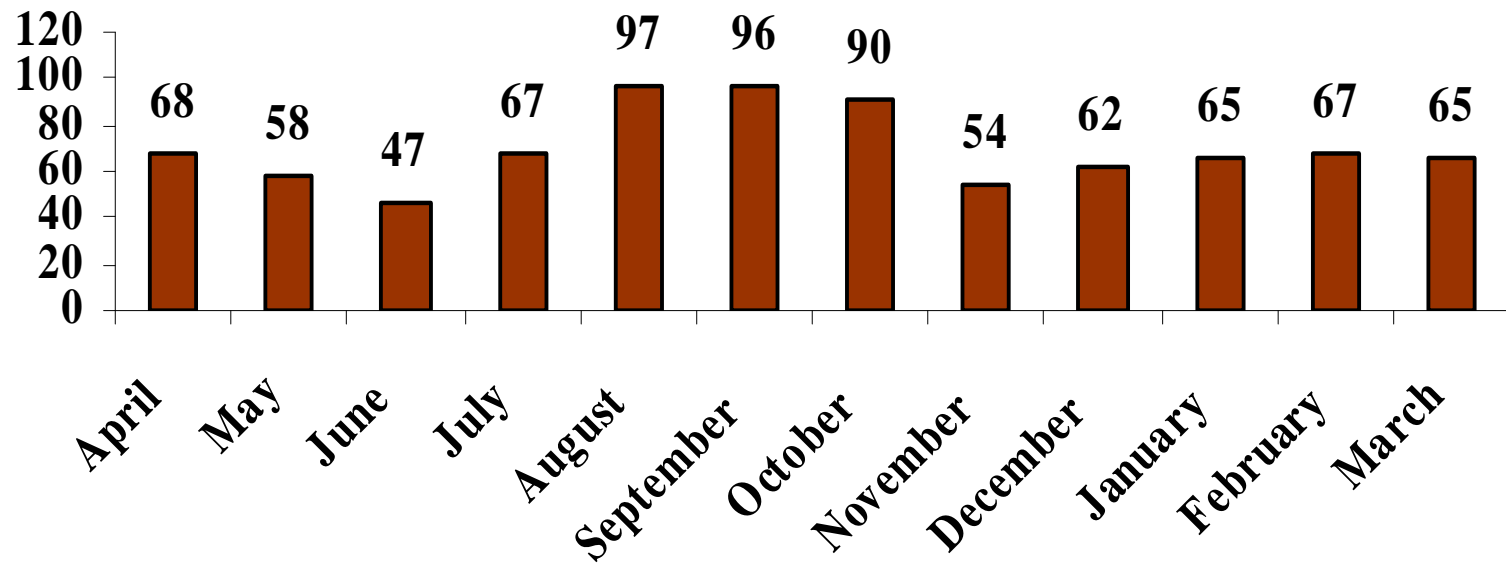
Extraction



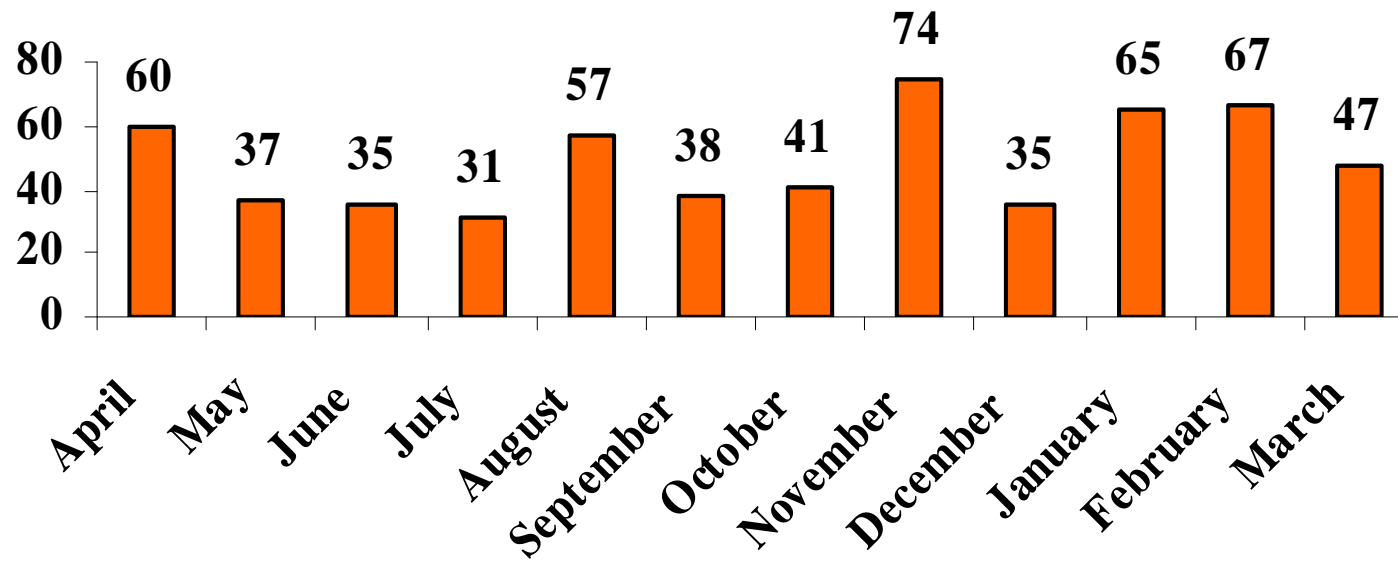
Number of X-Rays



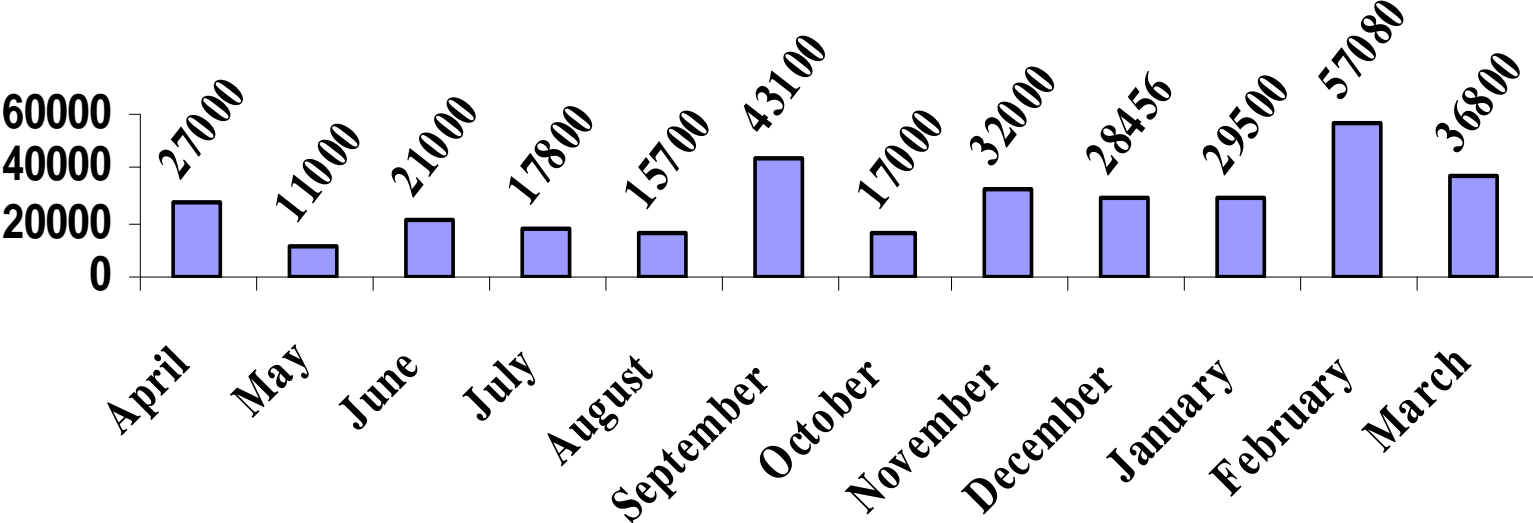
Total operations



Patient on ARVs



Condoms distributions



The end!!

Thank you!

