

Eshowe District Hospital Annual Report 2005



TABLE OF CONTENTS

-  1. Introduction
-  2. Indicators
-  3. Summary Statistics
-  4. Special Services
-  5. Blood Usage
-  6. Theatre Operations
-  7. Birth Statistics
-  8. PMTCT Statistics
-  9. VCT Statistics
-  10. Morbidity – Outpatients
-  11. Overview Deaths
-  12. Revenue Collection



1. INTRODUCTION

Eshowe District Hospital is a level one hospital providing quality compassionate inpatient and outpatient care, supporting development and sustainable Primary Health Care within the context of the District Health System. Eshowe District Hospital provides services for the immediate surrounding community within the uMlalazi Municipality as well as the other surrounding areas. High quality services is only obtained by maintaining the **OBJECTIVES, VISION, MISSION & CORE VALUES** of the hospital. Eshowe District Hospital is a authorized 460 bed hospital of which 50 beds are designated for private patients.

OBJECTIVES

To provide a quality health service within the context of the Department of Health Services.

VISION

At Eshowe District Hospital ,we strive to provide optimum health care services to all citizens of this area and to create well-being through committed leadership.

MISSION

To provide a quality sustainable and comprehensive District Health Care Service within a safe environment, by practicing the principles of Batho –Pele and Ubuntu through talented staff.

CORE VALUES

Fostering the spirit of Ubuntu ,to promote compassion, trustworthiness, transparency, openness, reconciliation and commitment to performance.



2. INDICATORS

MONTHS	BED OCCUPANCY RATE	DEATH RATE PER MONTH	AVERAGE LENGTH OF STAY	BED TURNOVER RATE	EXPENDITURE	COST PER PATIENT PER DAY
JANUARY	55%	8%	5 days	3 days	R4 977 326.70	415.76
FEBRUARY	54%	7%	5 days	3 days	R7 049 433.23	629.18
MARCH	54%	8%	5 days	3 days	R5 802 729.46	504.66
APRIL	54%	8%	5 days	3 days	R4 952 598.16	423.77
MAY	58%	9%	6 days	3 days	R6 630 092.38	521.14
JUNE	56%	10%	6 days	3 days	R6 137 936.65	495.59
JULY	56%	11%	6 days	3 days	R5 738 810.33	490.01
AUGUST	55%	11%	6 days	3 days	R6 131 622.53	492.78
SEPTEMBER	54%	9%	6 days	3 days	R6 579 865.58	580.08
OCTOBER	54%	9%	6 days	3 days	R6 315 595.09	552.92
NOVEMBER	51%	10%	6 days	3 days	R6 456 129.33	573.44
DECEMBER	43%	11%	5 days	3 days	R6 723 168.41	730.93



3. SUMMARY STATISTICS

DESCRIPTIONS	Jan	Feb	Mar	Apr	May	June	July	Aug	Sept	Oct	Nov	Dec	Total
OUT/PAT. HEAD COUNT	12282	12794	11482	12922	13391	13883	11085	13801	11628	11339	12678	9275	146560
IN PATIENT DAYS	7853	6902	7654	7353	8246	7735	7994	7822	7450	7630	7018	6093	89750
ADMISSIONS	1521	1379	1405	1314	1466	1367	1417	1351	1239	1226	1247	1064	15996
DEATHS	118	102	108	101	124	131	160	150	110	113	122	118	1457
BIRTHS	273	275	302	268	279	282	331	278	303	219	246	255	3311
DISCHARGES	1316	1214	1312	1208	1214	1242	1162	1142	1087	1087	1082	990	14056
TRANSFERS IN	18	35	11	24	9	21	17	18	12	11	12	7	195
TRANSFERS OUT	42	37	43	53	44	48	58	36	46	37	37	20	501
PATIENT ON/ ABSCONDED	18	14	19	29	14	19	23	16	23	14	15	24	228
INTERWARD IN	490	487	531	465	509	549	526	519	574	386	395	411	5842
INTERWARD OUT	490	487	531	465	509	549	526	519	574	386	395	411	5842
DAY PATIENTS	13	5	12	5	7	3	11	6	10	3	5	12	92
BOARDERS	1259	1305	1482	1047	1243	1378	1144	1205	1092	1051	1060	711	13977



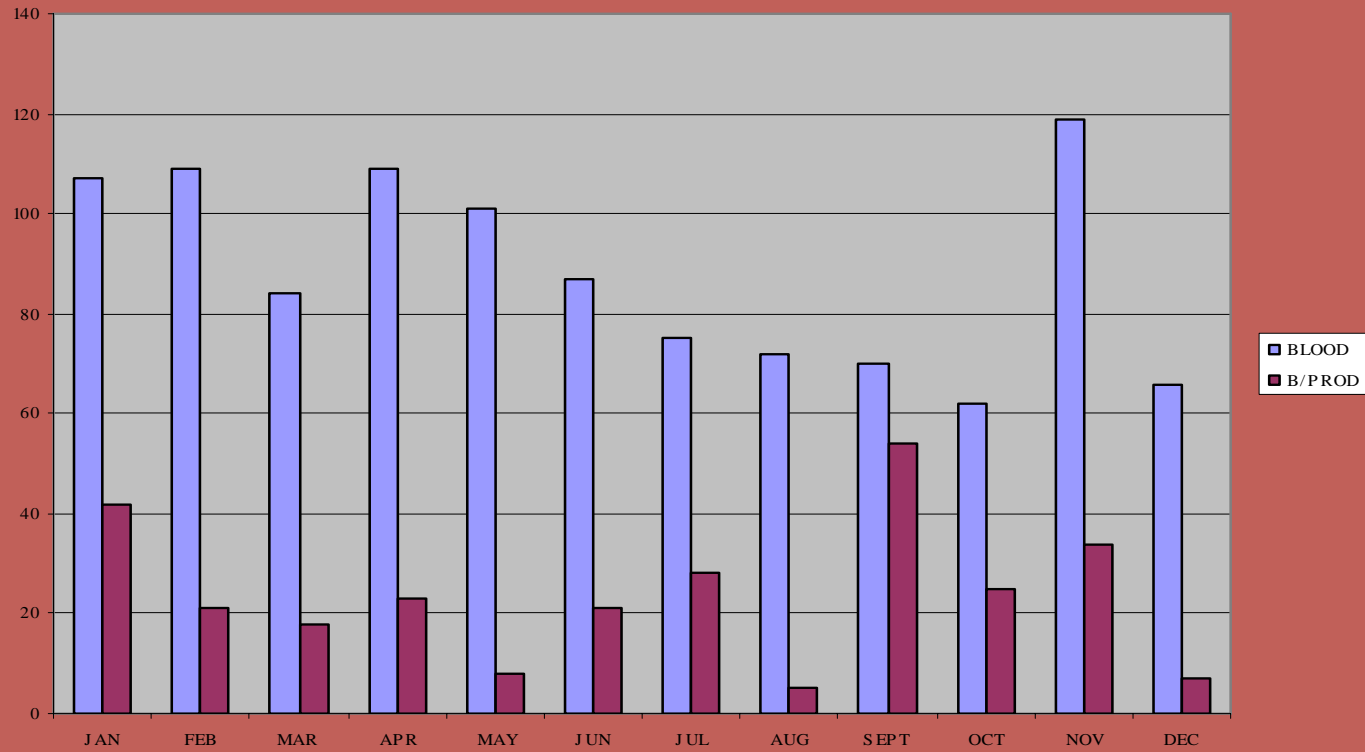
4. SPECIAL SERVICES

SERVICES	JAN	FEB	MAR	APR	MAY	JUN	JUL	AUG	SEP	OCT	NOV	DEC	TOTAL
CRISIS CENTRE	21	18	5	7	15	6	5	6	12	7	5	18	125
ULTRASOUNDS	49	48	45	68	55	46	24	3	80	39	59	44	560
SOCIAL CASES	65	91	81	43	108	94	68	77	110	79	87	80	983
DIETICIANS	247	292	191	158	174	141	35	192	110	152	203	64	1959
OCC.THERAPY	172	180	140	94	184	174	150	170	158	211	124	65	1822
CLINICAL PSYCH	51	76	21	0	0	0	0	0	0	0	0	0	148
DENTAL.EXT	257	364	376	481	451	238	440	342	338	462	523	323	4595
PHYSIO	335	303	341	356	896	1013	1256	1412	1252	1107	1027	710	10008
SPEECH THERAPY	101	85	34	55	87	77	80	55	67	51	59	24	775
X-RAYS	2313	2266	2237	2082	2422	2429	2261	2602	2510	2192	2307	1737	27358



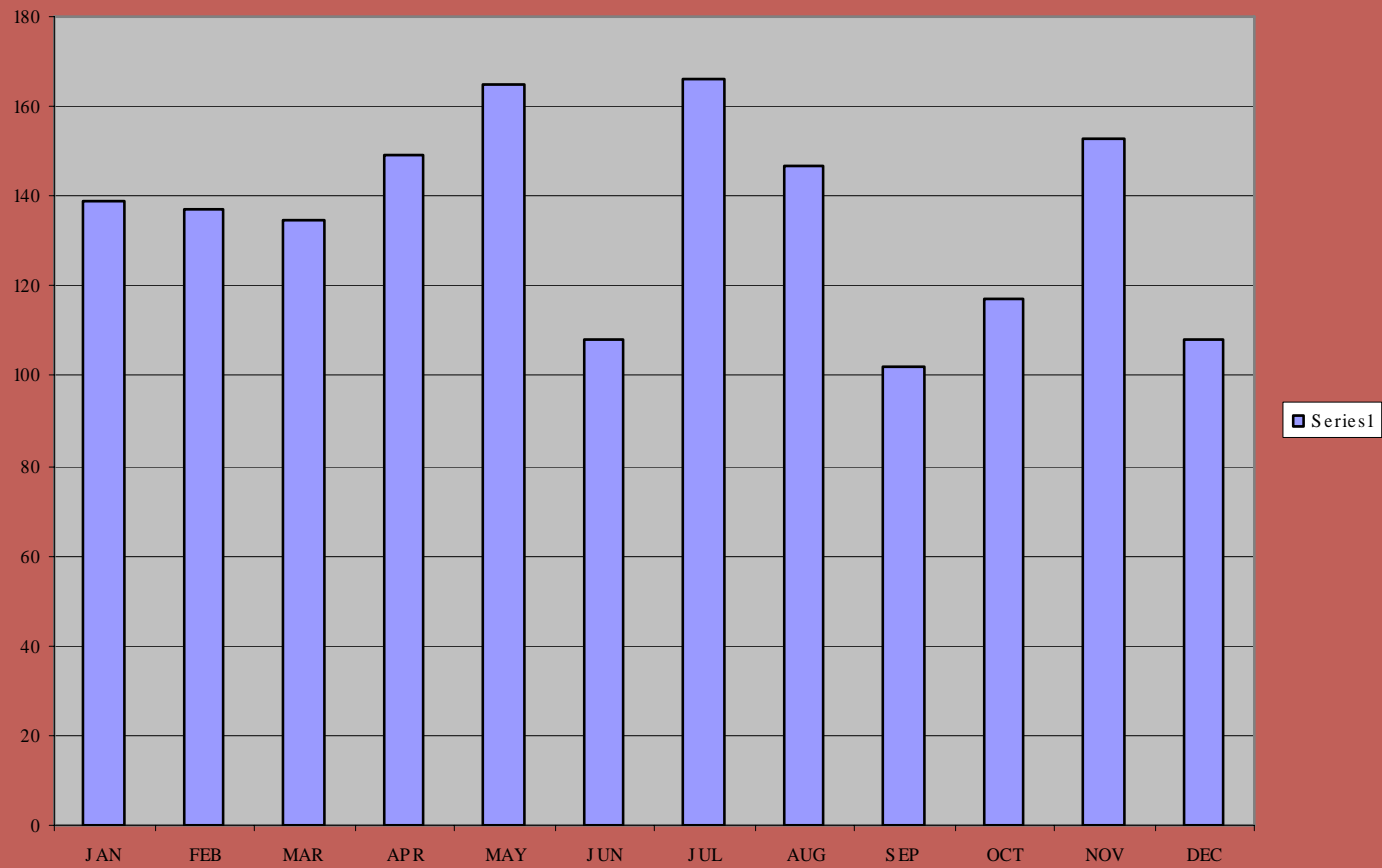
5. BLOOD USAGE

Usage of Blood & Blood Products

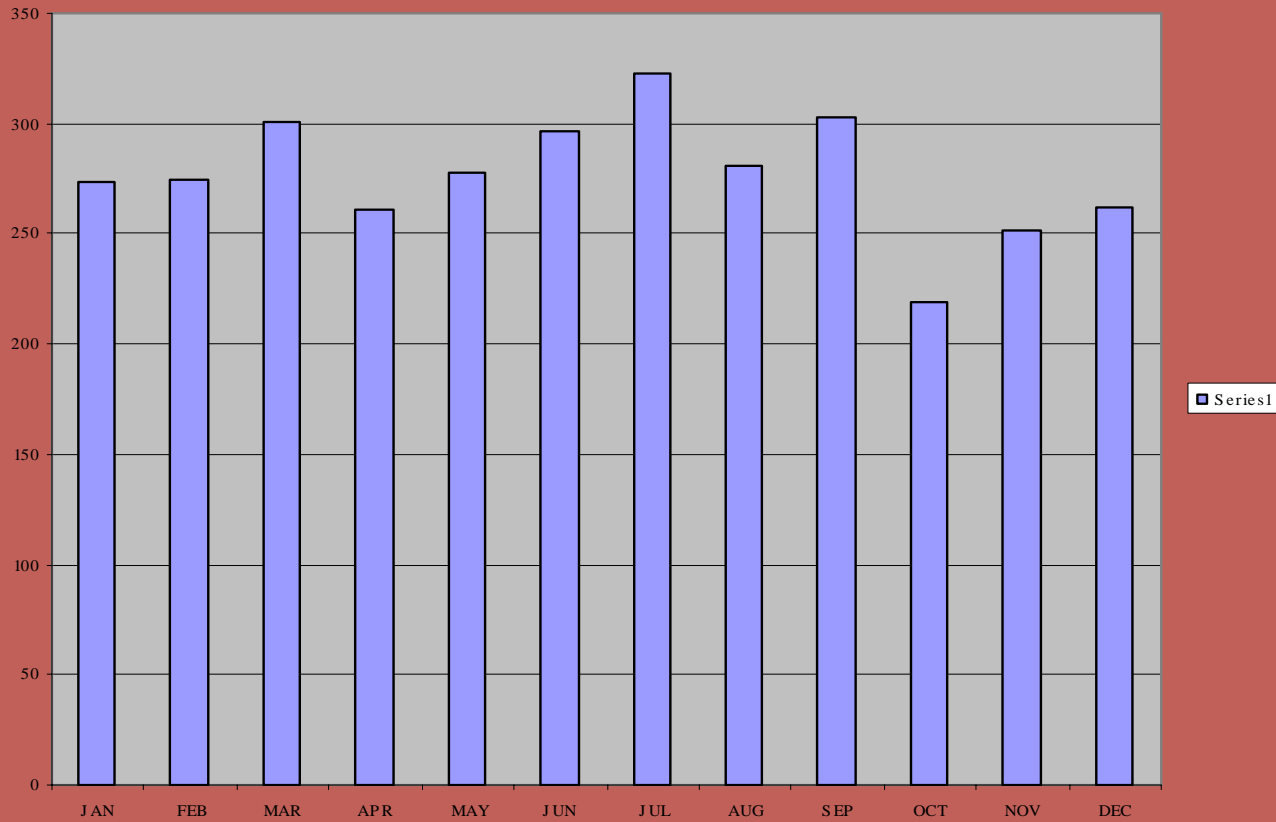


6. THEATRE OPERATIONS

Theatre Operations



7. BIRTH STATISTICS



8. PMTCT STATISTICS

DESCRIPTIONS	TOTALS
No. of 1st ANC visit	2091
ANC follow up visits	8029
Pre Test Counselling	1457
Tested	984
HIV Positive	423
HIV Negative	561
NVP given at ANC	222
NVP given during labour	302
Number of babies	862
.300ml dosage given	82
.600ml dosage given	780
Milk given @POPD/6 tins	1857
Bactrim given @POPD per baby	1857
Breast Fed	502
Formula Fed	357



9. VCT STATISTICS

DESCRIPTIONS	TOTALS
Self referred	863
Medically referred	1236
Pre test counselling.	2106
Total tested	1883
Total not tested	214
Total tested positive	1176
Total tested negative	707
Total on-going counselling rec.	84
Post test counselling rec.	1911



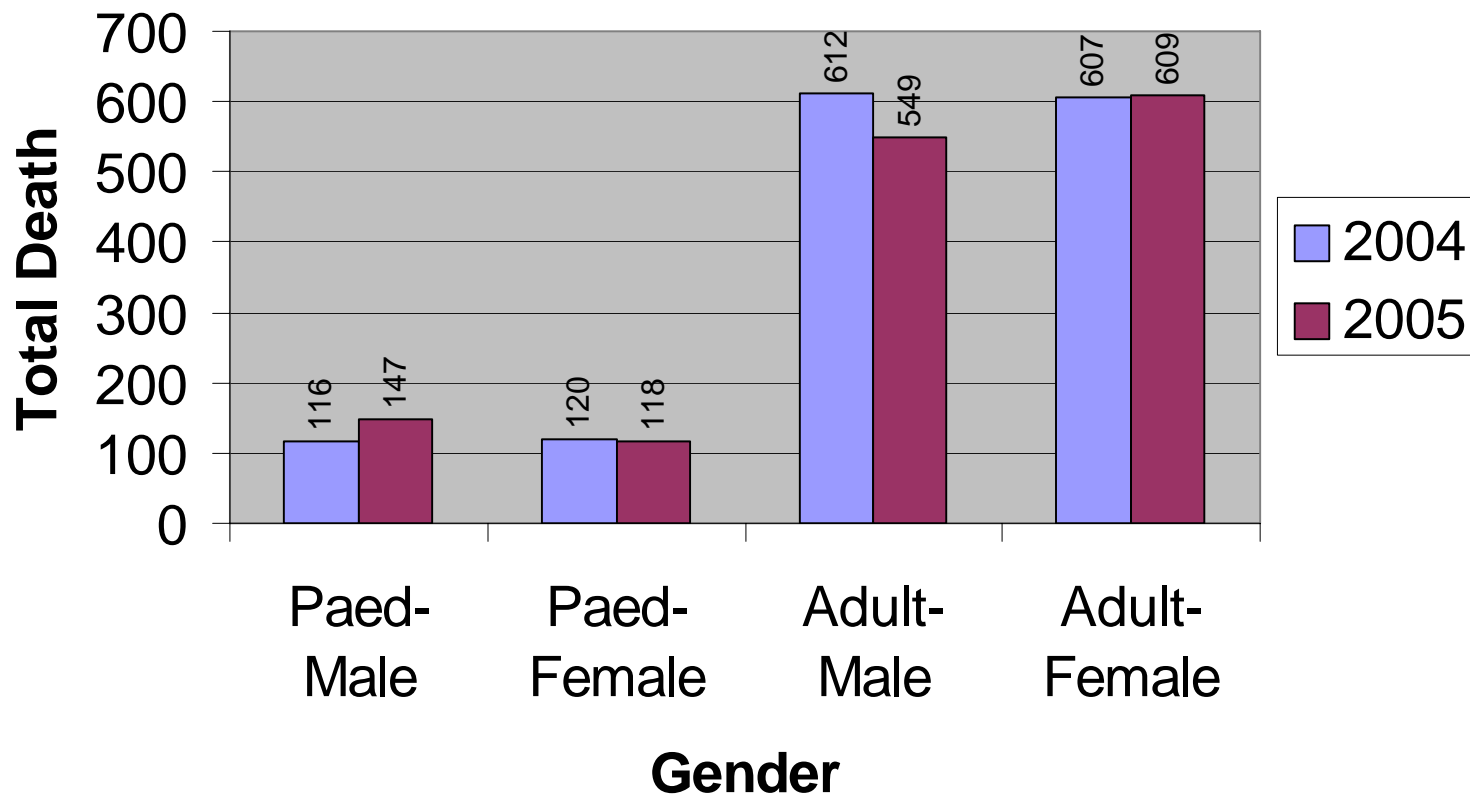
10. MORBIDITY - OUTPATIENTS

DATA ELEMENT	TOTAL
HYPERTENSION	13385
TB VISITS	29419
DIABETES	7065
GYNAE. CONDITION	6756
AIDS CLINICAL	2607
MENTAL HEALTH	3701
EPILEPSY	3638
INJURY / TRAUMA	3661
ASTHMA	2984
DIARRHOEA > 5	1995
STI - NEW	1650
SCABIES	664
DIARRHOEA < 5	583
L.R.T.I < 5	837
MALE URETHRAL DIS.	22
ANIMAL BITES	289
HELMINTHIASIS	13
MALNUTITION < 5	11



11. OVERVIEW DEATHS

Overview Death for 2005



12. REVENUE COLLECTION

Revenue Collection for 2005

