

Samukela ngemfudumalo wonke amakhasimedne ethu abadinga ukuvakasha noma abanasiphi esinye izizathu. Siyethemba ukuvakasha kwakho kube ngokuhle nanokuthi uzolulama maduze.

Uma ngabe ikhona indlela esingakusiza ngayo siyacela wazise umphathi waleyo department.

Okokugcina, siyethemba uzosheshe uzizwe usncono sikufisela nohambo oluphephile ukuya ekhaya.

Mrs S.P Nyawo

Hospital Manager

UZISEBENZISA KANJANI IZINSIZA ZETHU

Akunasidingo ukuya esibhedlela uma ngabe ugula noma ilunga lomndeni ligula. Kuyisu elihle ukuthi uye emtholampilo oseduzane uma ukugula kuqinisa uyobe usudluliselwa esibhedlela.

Uma ngabe udinga uhlobo oluthize losizo (esibhedlela esikhulu) kuba yihi esikudlisela esibhedlela esiyiso

IZINTO OKUMELE UZIPHATHE UMA UZOLALISWA.

- Okukugqoka uma ulala
- Izinto zokugcoba
- Umazisi/ ikhadi lempesheni
- Izinombolo zalobo abangathintwa abasondelene nawe
- Imali yokugibela uma usukhishiwe esibhedlela



UMA NGABE USUKHISHWA

- Cela iphepha lokuphuma elinemibuzo kuleyo Department, uligcwalise ubese ulifaka ebhokisini lemibono elikhona. Lokhu kuyosisiza ukwazi ukwenza kancono indlela esinika ngayo usizo

IZIKHATHI ZOKUVAKASHA

EKUSENI	EMINI	EBUSUKU
10H00—11H30	14H00—15H30	18H00—19H30



CASH PAYMENTS as from 1 November 2008

HO	Free Social Pensioners Formally unemployed (UIF or letter issued by Department of Labour)
H1	Single Income R1 – R3600 per annum Family Unit R1 – R50 000 per annum OPD (R 20.00 per consultation) Ward Charge (R 30.00 per consultation)
H2	Single Income R36 001 – R70 000 per annum Family Unit R50 000 – R 100 000 per annum OPD (R65.00 per consultation) Casualty (R120.00 per consultation) Ward Charge (R30.00 per day) X Ray (R40.00 per consultation) Oral Health (R45.00 per consultation) Supplementary Health Treatment (R55.00 per session) Supplementary Health Group Treatment (R45.00 per person)



Ungaletha izikhalazo noma izincomo ngokuzifaka ebhokisini lemibono elibekwe kuma Departments ahlukene lokhu ungakwenza ngokubhala noma usho uvo lwakho kumxhumanisi womphakathi nesibhedlela u Nksz T. Hadebe Ku ext: 7004



G.J CROOKES HOSPITAL

PRIVATE BAG X5501

SCOTTBURGH, 4180

TEL: 039-978 7000

FAX: 039-978 1295

Compiled by the Public Relations Department



health

Department:
Health
PROVINCE OF KWAZULU-NATAL

**IBHUKU LEMININGWANE
YEAR 2011/2012**



**G.J CROOKES
HOSPITAL,
SCOTTBURGH**

SIYAZIGQAJA NGOKUSEBENZELA WENA



UMPHAKATHI PHAMBILI

TEL: 039—978 7000

KZN Health Customer Call Centre

0800 005 133 (Toll free)

AMALUNGELO EZIGULI.

Zonke iziguli zinamalungelo alandelayo;

1.Ukulashelwa endaweni esezingeni elamkelekile lezempilo futhi evikelekile

2.Ukuba nezwi ekuthathweni kwezinqumo ngempilo yakho

3.Ukwazi ukuthola usizo lwezempilo

4.Ukuthola ulwazi ngomshwalense wokuthola usizo lwezempilo.

5.Ukuziqokela lolosizo lwezempilo oludingayo

6.Yelashwa abasebenzi bezempilo abasemthethweni futhi abanesigqebhezana esichazayo ukuthi bangobani

7.Ukugcinwa kolwazi lokwelashwa kwakho njengemfihlo, neleungelo lokwelashelwa esithe

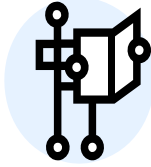
8.Ukunikezwa ulwazi oluphelele ngaphambi kokuthatha isinqumo mayelana nokwelashwa okunconywa abazempilo.

9.Ukungavumi ukwelashwa

10.Ukuthola omunye umbono mayelana nendlela yokwelashwa

11.Ukuqhubeka nokunakekelwa

12.Ukubeka izikhalazo ezimayelana nohlelo lwezempilo



IZIBOPHO ZEZIGULI

Sonke isiguli kumbe loyo osebenzisa izikhungo zezempilo unalezizibopho :

1.Ukuchazela abasebenzi bezempilo ngezifiso zakhe mayelana nokufa kwakhe.

2.Ukulandela imigudu ebekiwe yokwelashwa.

3.Ukubuza ngemali elindeleke ukuba ikhokhelwe ukwelashwa nokuthi izokhokhwa kanjani.

4.Ukunakekela amafayela awanikeziwe mayelana nempilo yakhe.

5.Ukunakekela impilo yakhe.

6.Ukubhekela nokuvikela imvelo.

7.Ukuhlonipha amalungelo ezinye izigulikanye nabasebenzi bezempilo.

8.Ukusebenzisa izinsiza zezempilo ngendlela efanele eqikelelayo nengahlaphazi.

9.Ukuba nolwazi ngezinsiza zezempilo endaweni umuntu aphila kuyo nokuthi zinikezani.

10.Ukunikeza abasebenzi bezempilo ulwazi olufanele ukuze kube nesiqiniseko sokuthi usizo umuntu alutholayo yilona lona.

IZINHLELO ESINAZO Ziyafana kulezo ziguli ezisuke zilalisiwe

nalezo ezizobonwa udokotela bese ziyagoduka.

- Abahlukumezekile nabezimo eziphuthumayo – usuku lonke
- Medicine – usuku lonke
- Uhlelo lwabahlinzayo nabemisipha - usuku lonke
- Obstetrics & Gynae –usuku lonke
- Uhlelo olsebenza ngezingane - usuku lonke
- Dental/Oral Health services - 07:00 – 16:00, Phakathi nezinsuku
- Ezengqondo—usuku lonke
- Ezenhlalakahle - 07:00 – 16:00, Phakathi nezinsuku
- Ezamehlo nokususwa kolwelwe (Yintsha)
- Ukuhushulwa kwezisu, ababekisile kuphela (Yintsha)
- Iwodi lokubhekwa kwabagula ngengqondo amahora awu 72 (Yintsha)
- Uhlelo lokuqondiswa kwezimilo (Abeluli misipha, Ezokuqondiswa kolimi, Occ Therapy) - 07:00 – 16:00, Phakathi nezinsuku
- Umeluleki wezokudla /Usomsoco- 07:00 – 16:00, Phakathi kwezinsuku
- Umtholampilo wezempilo - 07:00 – 16:00, Ulwesibili, Ulwesithathu kanye nolwesine
- Ezasemithini 07:00 – 16:00, Phakathi kwezinsuku
- Omabhalane
- Abahlukumezekile
- Umtholampilo wezabasebenzi
- Emakhazeni
- Clinical Support Services
 - Abacwaningi
 - Esithombeni /Emafutheni
- Ezasemtholampilo 13
 - Gateway Clinic, fixed clinics & four mobile teams
 - Home based care
 - Izinhlelo zokusiza umphakathi HIV/AIDS (HCT& PMTC sites & ARV programmes)
 - TB & STI Management programmes
 - Abazoxukuza
 - Ezomsoco nokondliwa kwabantwana
 - Baby Friendly Hospital Initiative
 - Uhlelo lokufundisa ngezempilo ezikoleni
 - Ukuqedwa kwendlala
 - Good Governance/Service Excellence Initiative
- EAP (Ezempilo nenhlalakahle kwabasebenzi) 07:00 – 16:00, Phakathi kwezinsuku

ISIBHEDLELA I.G.J.CROOKES

Sizinikele ekwenzeni okulandelayo:

UMBONO

Isibhedlela i G.J Crookes sizonikezela ngonakekelo lwezempilo olusizingeni eliphezulu kuzo zonke izakhamizi zesifunjana soGu olusenyakatho (Umdoni, Vulamehlo no Mzumbe osenyakatho)

OKUPHOKOPHELELWE

Ukunikezela ngosizo lwezempilo oluhlanganyelwe olungenamkhawulo, oludidiyelwe futhi olwakhelwe onakekelweni lokuqala lwezempilo, ukuqhakambisa ezempilo, imithetho yama Batho Pele ngokubambisana nezinye izikhungo

IZIMO EZIBALULEKILE

Strive: Ukuphokophelela ukuqiniseka kokuxhumana okwanele nokuvulelekile ngaso sonke isikhathi

Ensure: Ukuqinisekisa isithunzi nokuthobela ukwehluka kwezigaba zomphakathi

Render: Ukunikeze umphakathi usizo olutholalalayo, olungamoshi noluseqopheleni eliphezulu.

Value: Ukwazisa abasebenzi nezinsiza zokusebenza

Involve: Ukuhlanganyela nezinye izikhungo ekwenzeni umsebenzi

Commit: Ukuzibophezela eqophelweni eliphezulu ngokuthuthukisa amakhono nobunyoni.

Evaluate: Ukubuyekeza wonke umsebenzi wethu khona sizothuthuka

HOSPITAL MANAGEMENT TEAM

