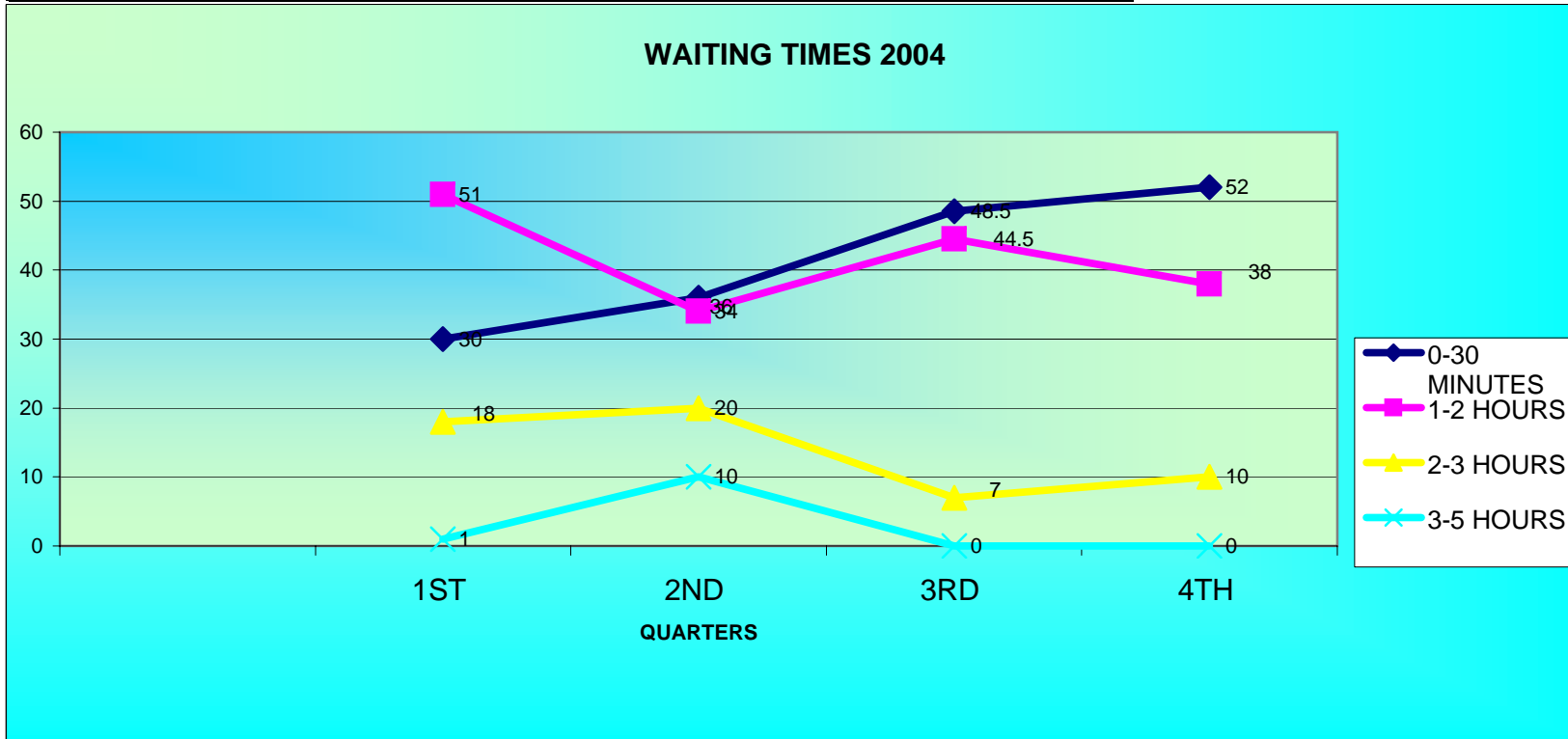


2004 ANNUAL WAITING TIMES (STANGER HOSPITAL)

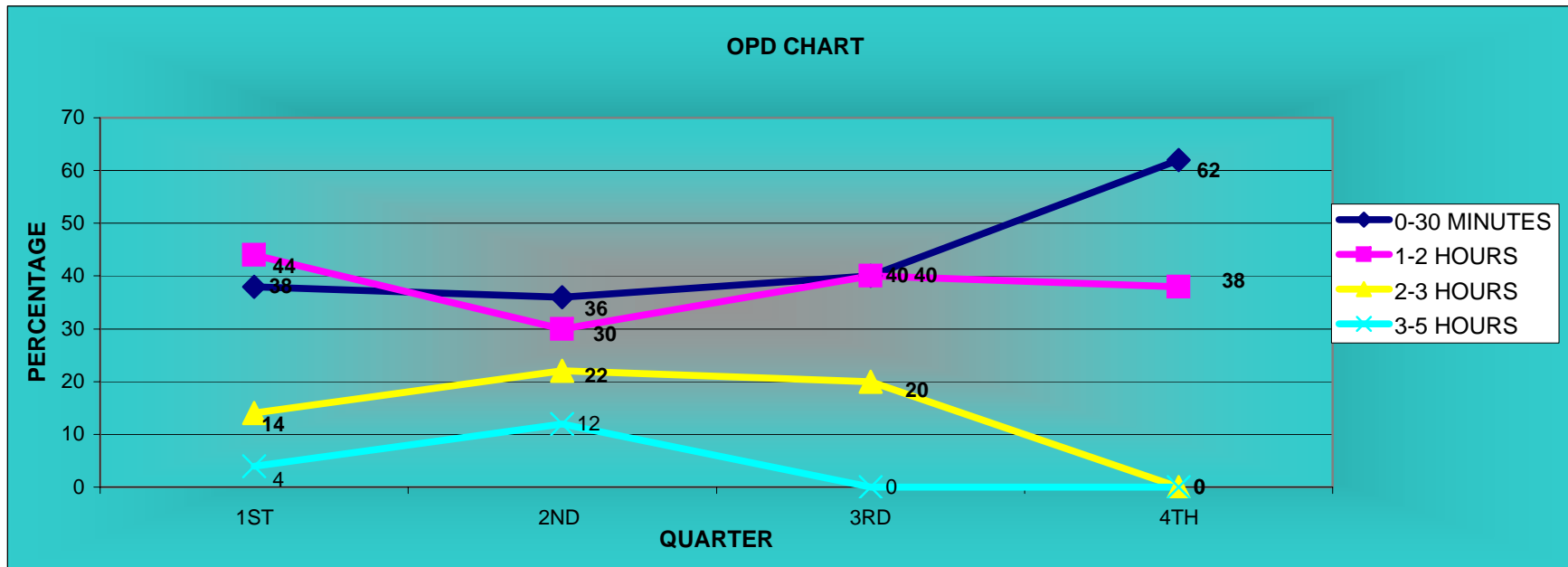
QUARTERS	0-30 MINUTES	1-2 HOURS	2-3 HOURS	3-5 HOURS	TOTAL
1ST	30	51	18	1	100
2ND	36	34	20	10	100
3RD	48.5	44.5	7	0	100
4TH	52	38	10	0	100



STANGER HOSPITAL

ANNUAL OPD WAITING TIMES

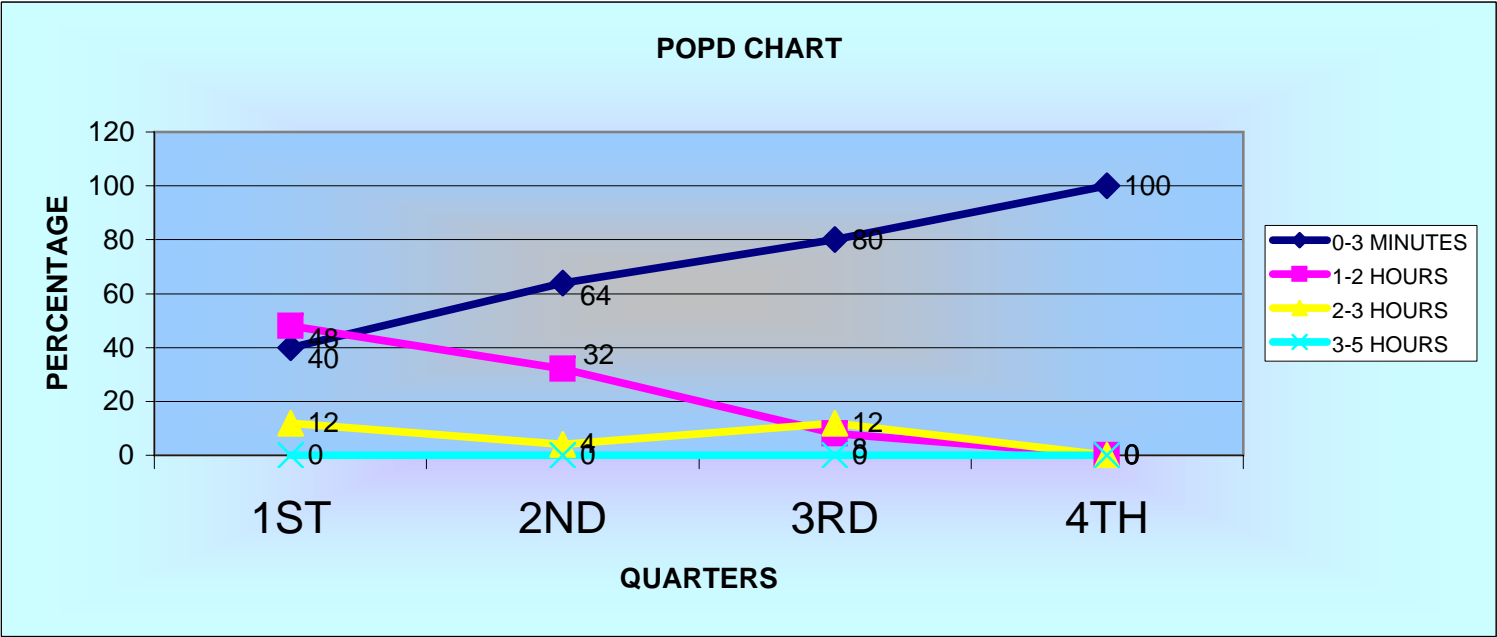
QUARTERS	0-30 MINUTES	1-2 HOURS	2-3 HOURS	3-5 HOURS	TOTAL
1ST	38	44	14	4	100
2ND	36	30	22	12	100
3RD	40	40	20	0	100
4TH	62	38	0	0	100



STANGER HOSPITAL

ANNUAL POPD WAITING TIMES

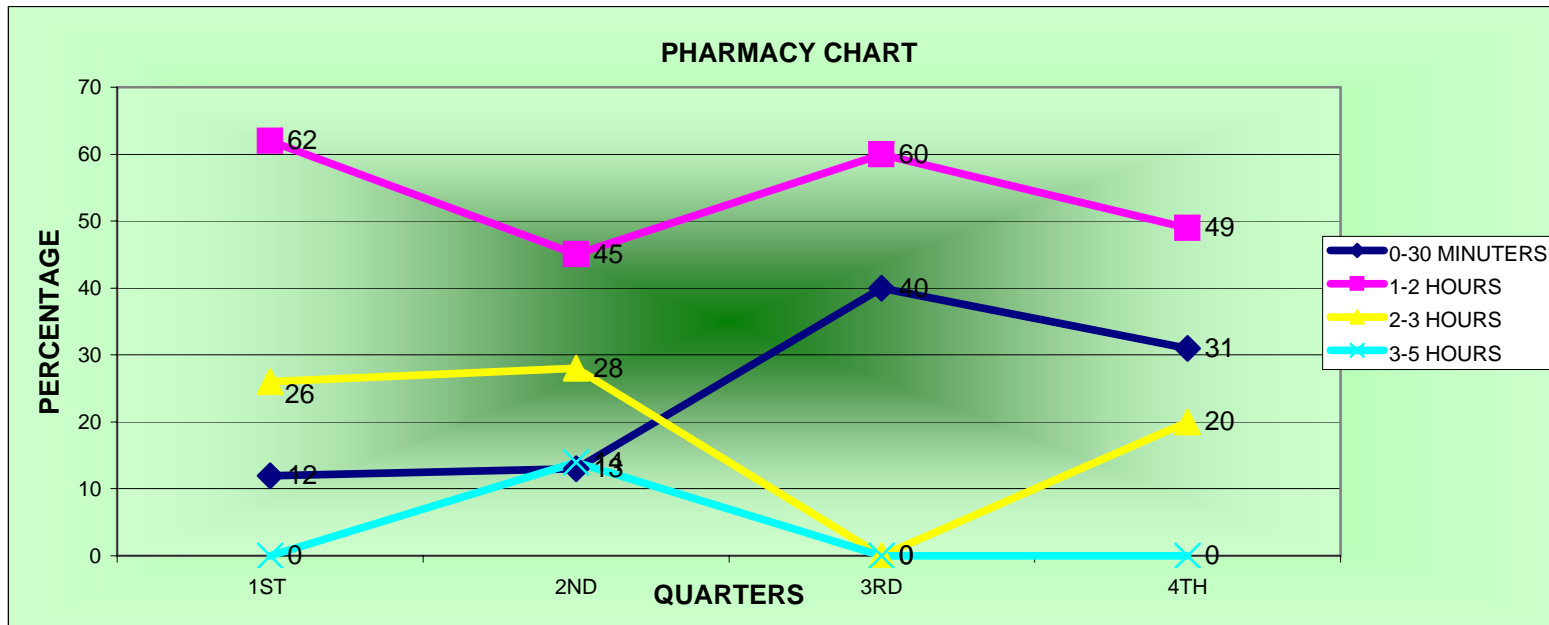
QUARTEERS	0-3 MINUTES	1-2 HOURS	2-3 HOURS	3-5 HOURS	TOTAL
1ST	40	48	12	0	100
2ND	64	32	4	0	100
3RD	80	8	12	0	100
4TH	100	0	0	0	100



STANGER HOSPITAL

ANNUAL PHARMACY WAITING TIMES

QUARTERS	0-30 MINUTERS	1-2 HOURS	2-3 HOURS	3-5 HOURS	TOTAL
1ST	12	62	26	0	100
2ND	13	45	28	14	100
3RD	40	60	0	0	100
4TH	31	49	20	0	100



STANGER HOSPITAL

ANNUAL CASUALTY WAITING TIMES

QUARTERS	0-30 MINUTES	1-2 HOURS	2-3 HOURS	3-5 HOURS	TOTAL
1ST	76	24	0	0	100
2ND	100	0	0	0	100
3RD	68	28	4	0	100
4TH	68	32	0	0	100

