



**health**

Department:  
Health  
PROVINCE OF KWAZULU-NATAL

# IMBALENHLE COMMUNITY HEALTH CENTRE

## EZAS'MBALI

## NEWS

### STAY INFORMED

June edition

### ADOLESCENTS & YOUTH FRIENDLY SERVICES CLINIC LAUNCH



**FROM LEFT: MRS. N. NGCOBO (KHETHIMPILO COORDINATOR), DR. E. MUREKEZI (KHETHIMPILO DISTRICT MANAGER), WARRANT OFFICER M.I. KHANYILE, SERGEANT S.B. GWALA, MRS. L.V. MSIMANG (DREAMS COORDINATOR), MRS. X.N.T. MTUNZI (IMBALENHLE CHC CEO) MRS. L.H. SIBIYA (NURSING MANAGER)**

Adolescents and Youth Friendly Services is one of the strategies by the National Department of Health to combat the challenges faced by the Youth and Adolescents in South Africa. Its main objective is to promote accessibility and utilization of these services by Adolescents and Youth and also to improve optimal health status of the Adolescents and Youth.



**(YOUTH FRIENDLY) READ MORE ON PAGE 01-05 TB CAMPAIGN READ MORE ON PAGE 07 SPORTS AND RENOVATIONS PAGE 08**

## ADOLESCENTS AND YOUTH FRIENDLY SERVICES CLINIC LAUNCH

On the 01<sup>st</sup> of June 2017 Imbalenhle CHC launched Adolescents and Youth friendly services whereby 5 local high schools were invited from our catchment area.

The schools that were invited to attend the event were: Umvuzo High school, Sqongweni High school, MehlokaZulu High school, ZibukeZulu High school and ZamaZulu High school. Out of the five schools we invited 35 learners in total.

The aim of the launch was to create awareness to the Adolescents and Youth in our community to increase the utilization of the services. Some of the challenges that the Adolescents and Youth are facing are: alcohol abuse, drug and substance abuse, gender based violence,



HIV and AIDS, STI's as well as unplanned pregnancy. We as Imbalenhle CHC have identified that there is high teenage pregnancy rate due to the lack of knowledge and utilization of these services.

So, we decided to offer these services to the Adolescents and Youth in order to address any challenges they have.

This clinic will render these services in a dedicated service point with dedicated staff who will be able to address the challenges that Adolescents and Youth are facing in this era. We will also formulate support groups/clubs for them.

## ADOLESCENTS YOUTH FRIENDLY SERVICES CLINIC LAUNCH

Imbalenhle CHC is working in partnership with the NGO (Khethimpilo) in ensuring that these services are running smoothly.



From Left: Ms. L. Ngcobo, Sr. M.N. Mabaso and Ms. L. Masondo

These are staff members from Khethimpilo who are assisting in rendering Adolescents and Youth friendly services within the facility.



**From left: Warrant Officer M.I. Khanyile from family violence, child protection and sexual offences Unit and Sergeant S.B. Gwala from Social crime prevention Unit in Plessislaer Police delivering his speech.**

They work hand in hand with schools about drug related issues and carrying of dangerous weapons. They also gave advices to the learners about factors that might lead them to crime as well as what they should do in a situation where they find themselves being victims of any kind of abuse or sexually abuse.

## ADOLESCENTS YOUTH FRIENDLY SERVICES CLINIC LAUNCH



**Above left: Imbalenhle CHC CEO Mrs. X.N.T. Mtunzi.**

Imbalenhle CHC Chief Executive Officer Mrs. X.N.T. Mtunzi welcomed all guests, stakeholders and schools. She briefly explained the purpose of the event to the audience. She also encouraged students to go out and try by all means to market the Youth friendly services programme to other learners at their schools as well as their respective communities.



**Above: Mrs. L.V. Msimang UMgungundlovu District Dreams Coordinator based at UMgungundlovu district municipality (HIV & AIDS) giving motivational talk to learners based on DREAMS, which is one of the strategies by the Office of the Premier to encourage youth to reach their goals.**

The D.R.E.A.M.S. Youthbuild program is committed to helping young adults become dedicated, responsible, educated, accountable, motivated and self sufficient, by assisting participants in obtaining their GED and securing full time employment. YouthBuild is a youth and community development program that simultaneously addresses core issues facing low-income communities: housing, education, employment, crime prevention, and leadership development. In YouthBuild programs, low-income young people ages 16-24 work toward their GED or high school diploma, learn job skills and serve their communities by building affordable housing, and transform their own lives and roles in society.



**Above: Mrs. N. Ngcobo from Khethimpilo delivering her speech regarding the services they render to the youth in partnership with the Department of Health. She also introduced the staff of Khethimpilo that renders youth friendly services at schools nearby Imbalenhle CHC and those based within the facility.**

The school learners were given the opportunity to ask questions in a variety of topics that were discussed during the day.



# CAREER GUIDANCE

During the launch, five selected staff members from various departments within the facility were given the opportunity to provide career guidance pertaining their professions. They gave career guidance to learners, focusing on their qualifications and which subjects to focus on in order to qualify for that specific career at tertiary level. Amongst the departments that were nominated were: Pharmacy, Dental, Physiotherapy, Radiography as well as Speech therapy.



**Above: Mr. M.S. Zuma  
Pharmacist**



**Above: Mrs. T. Ntuli  
Radiographer**



**Above: Dr. T.D. Mmakhuto  
Dentist**



**“Education is the passport to the future, for  
tomorrow belongs to those who prepare  
for it today”.**  
**Malcolm X**



# DRAMA

Imbalenhle CHC staff members performed a stage play which displayed the challenges faced by the youth. The message which was portrayed during the play was aiming to address the issues of drug and alcohol abuse, engagement in unprotected sexual intercourse, STI's, gender based violence as well as warning youth on sugar daddy 's "blessers".



This scene of the play portrayed a warning of sugar daddy's.



This scene of the play was encouraging the audience to use condoms to protect themselves against HIV, STI and other related sexual diseases.



The play was showing activities the youth are involving themselves in, which leads them to behave irresponsible.



Above : One of the characters who was infected with HIV as a result of going to night clubs and drinking alcohol at a young age. She was demonstrating to the audience the end-results of such bad behaviors.

# TB AWARENESS CAMPAIGN 2017



Based on research, TB is the leading disease in the cause of high mortality rate worldwide. March has been allocated as TB awareness month by the Department of health as appears on the health calendar.

On March 23, 2017 Imbalenhle CHC embarked on an TB awareness campaign. Amongst the activities of the day was a walk and screening services at the Mall. The walk which started at Imbalenhle CHC went through to Fadsam and ended at Edendale mall. It involved Staff members from the CHC which were led by the TB team and an NGO'S Khethimpilo as well as THINK.

The aim of the walk was to sensitize/raise awareness to the community about TB and TB treatment. At the Edendale Mall we had placed gazebos whereby we were delivering services. The services included TB screening and testing, HB screening, Education about TB and related illnesses such as HIV & Diabetes, Stand for HIV, BP testing and Glucose monitoring, Distribution of condoms, Distribution of seedlings and Issuing of pamphlets - (TB, STI, HIV & Diabetes).



**Above: TB team member doing BP and Diabetes testing during the campaign at Edendale Mall.**

**Below: Sr. Ngcobo from outreach team, Sr. Mkhize (OHN) and Sr. Ostrich from TB handing over a gift of seedlings to the clients that participated during the campaign.**



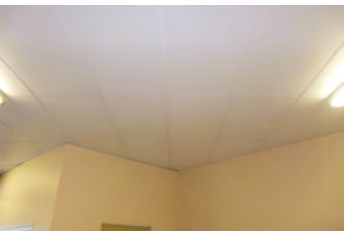
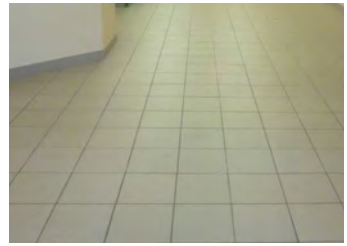
**Above: THINK (NGO) member educating a client about TB and related illnesses such as HIV, Diabetes etc, after TB screening and HIV testing.**

# RENOVATIONS

## Before



## After



## **SPORTS**



**Left: runners up trophy that was won by the Imbalenhle soccer team at the Northdale Hospital Tournament**

**Right : runners up trophy that was won by the soccer team at the Umgungundlovu Health District tournament**





# ACKNOWLEDGEMENTS



**Mr. S. Mgoza**  
**Public Relations Inserv**  
**Designer, photographer and writer**  
**Public Relations Inserv**



**Mr. A. Ndawonde**  
**Public Relations Inserv**  
**Designer, photographer and writer**  
**Public Relations Inserv**

**This issue was written and edited by Mr. B.M Mzelemu Public Relations Officer Imbalenhle CHC.**



**health**

Department:  
Health  
PROVINCE OF KWAZULU-NATAL

## CONTACT DETAILS

**Physical Address:**  
Imbalenhle CHC  
Unit 3 Imbali township  
Thwala Road  
Pietermaritzburg  
3201

**Web Address:**  
[www.kznhealth.gov.za](http://www.kznhealth.gov.za)

**Postal address:**  
Imbalenhle CHC  
Private Bag X 9104  
Pietermaritzburg  
3201

**SWITCHBOARD: 033 398 9100**

**Email:**  
[Mthandeni.mzelemu@kznhealth.gov.za](mailto:Mthandeni.mzelemu@kznhealth.gov.za)