

KWADABEKA CHC SATELLITE CLINICS

◆ 2006
INFORMATION
REPORT
(1ST – 4TH Quarter)



DEPARTMENT OF HEALTH

DIVISION:INFORMATICS
FACILITY INFORMATION OFFICER
P.O. BOX 371
CLERNAVILLE 3602
TEL : (031)7071355
FAX : (031)7072248
EMAIL :
sfisoshabalala@kznhealth.gov.za

INDEX



TABLE OF CONTENTS

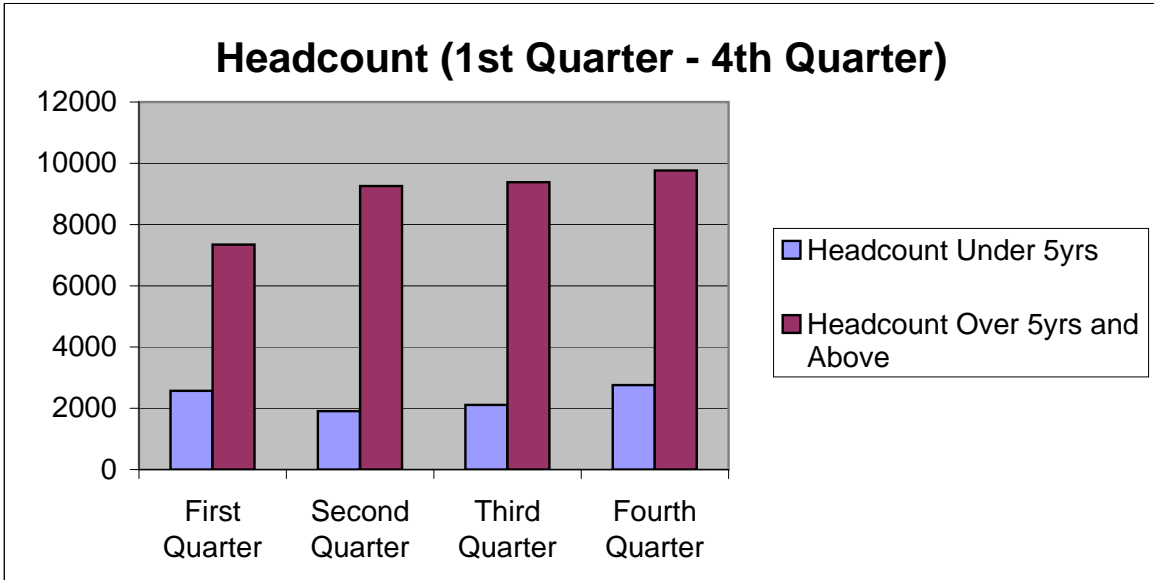
PAGE NUMBER

<i>CLERMONT</i>	<i>1 - 4</i>
<i>FREDVILLE</i>	<i>5 - 8</i>
<i>KWANDENGEZI</i>	<i>9 - 12</i>
<i>MOLWENI</i>	<i>13 - 16</i>
<i>MPUMALANGA</i>	<i>17 - 20</i>
<i>MSUNDUZI</i>	<i>21 - 24</i>
<i>NGCOLOSI</i>	<i>25 - 28</i>
<i>NTSHONGWENI</i>	<i>29 - 32</i>
<i>PEACEVILLE</i>	<i>33 - 36</i>
<i>HLENGISIZWE</i>	<i>37 - 41</i>
<i>HALLEY STOTT</i>	<i>42 - 46</i>
<i>MOBILES</i>	<i>47</i>
<i>IMMUNISATION INDICATORS</i>	<i>48 - 49</i>

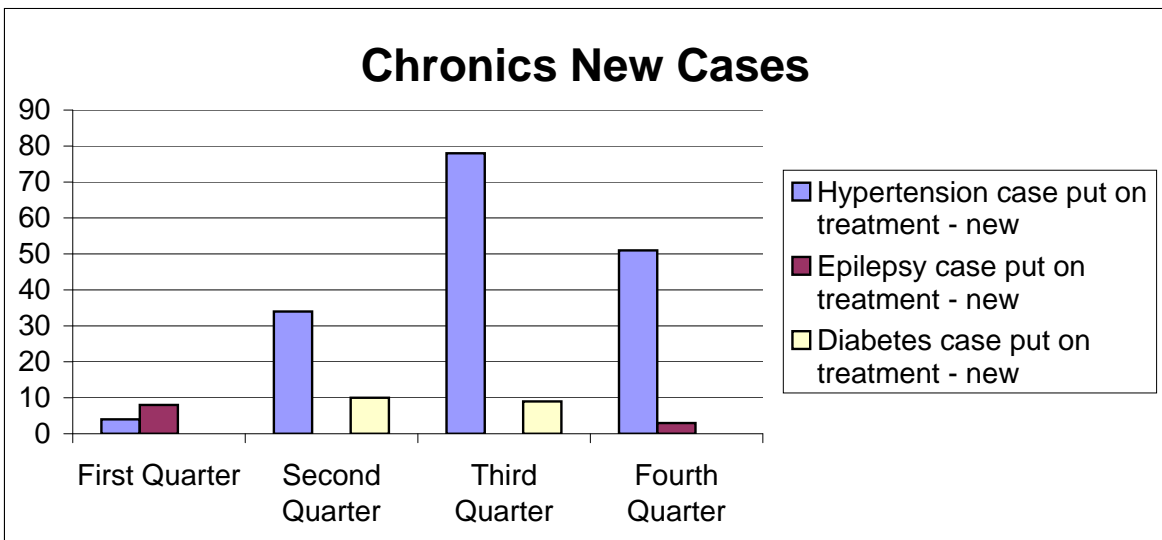
DEPARTMENT OF HEALTH

CLERMONT CLINIC

	First Quarter	Second Quarter	Third Quarter	Fourth Quarter
Headcount Under 5yrs	2570	1907	2111	2756
Headcount Over 5yrs and Above	7347	9259	9384	9765

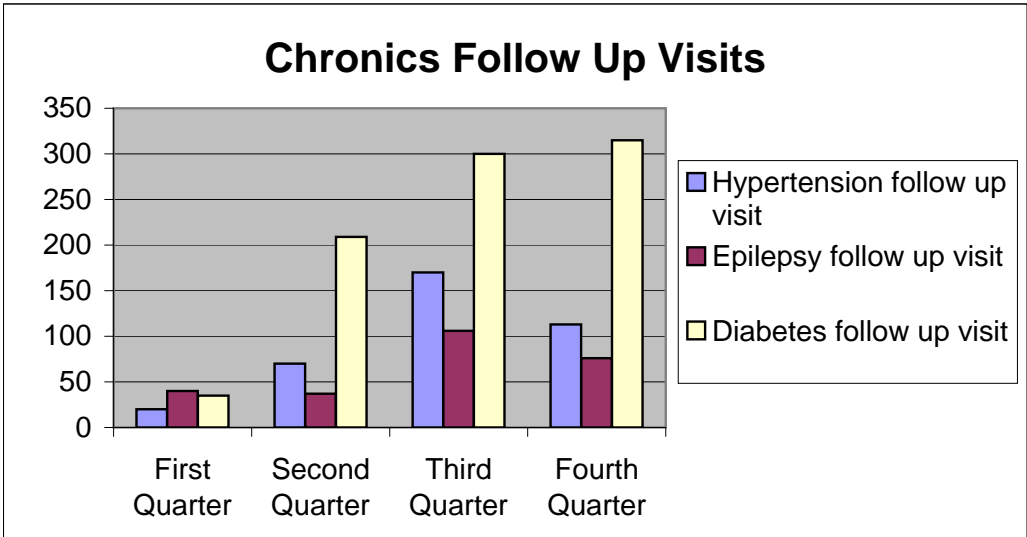


	First Quarter	Second Quarter	Third Quarter	Fourth Quarter
Hypertension case put on treatment - new	4	34	78	51
Epilepsy case put on treatment - new	8	0	0	3
Diabetes case put on treatment - new	0	10	9	0

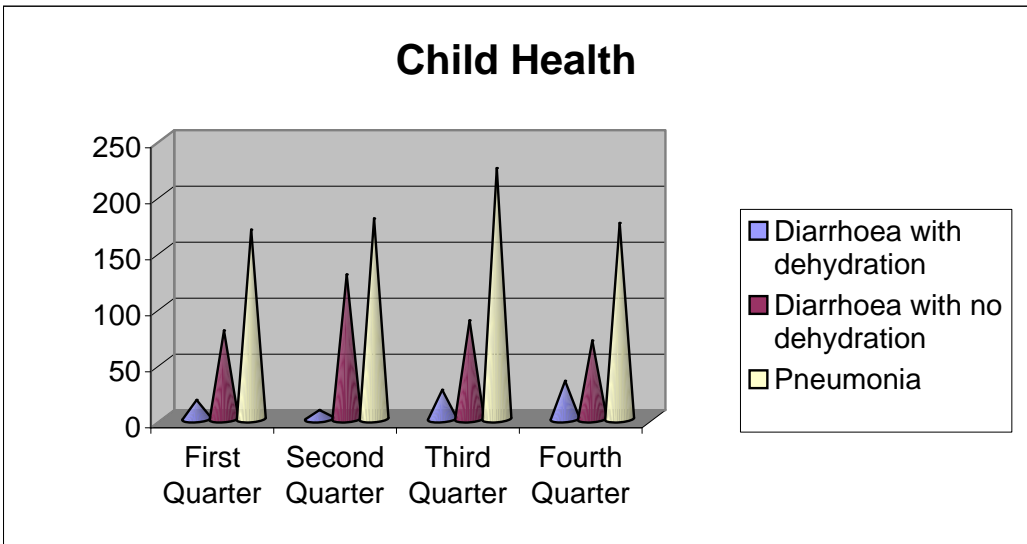


DEPARTMENT OF HEALTH

	First Quarter	Second Quarter	Third Quarter	Fourth Quarter
Hypertension follow up visit	20	70	170	113
Epilepsy follow up visit	40	37	106	76
Diabetes follow up visit	35	209	300	315

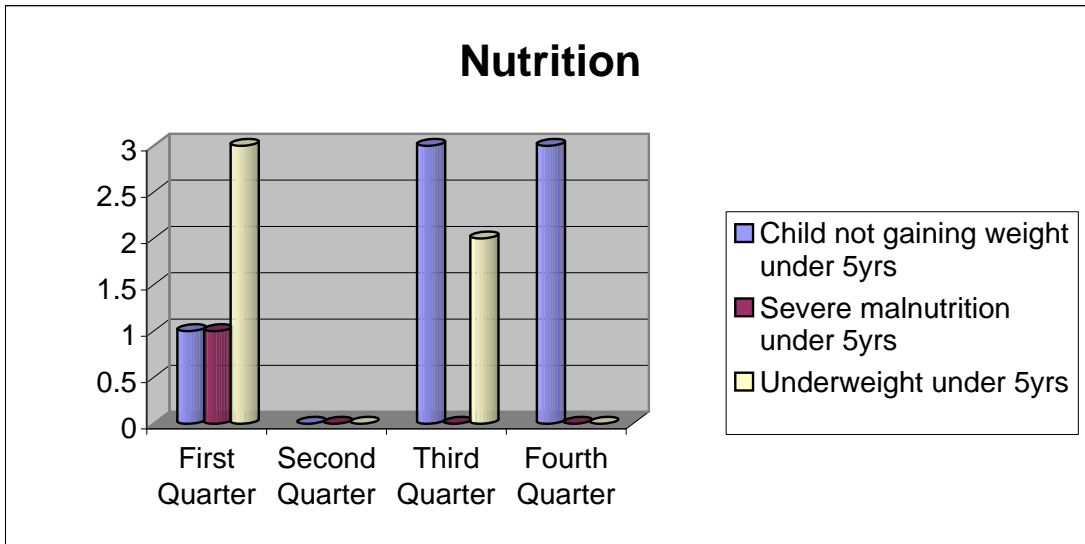


	First Quarter	Second Quarter	Third Quarter	Fourth Quarter
Diarrhoea with dehydration	17	8	26	34
Diarrhoea with no dehydration	79	129	88	70
Pneumonia	169	179	224	175

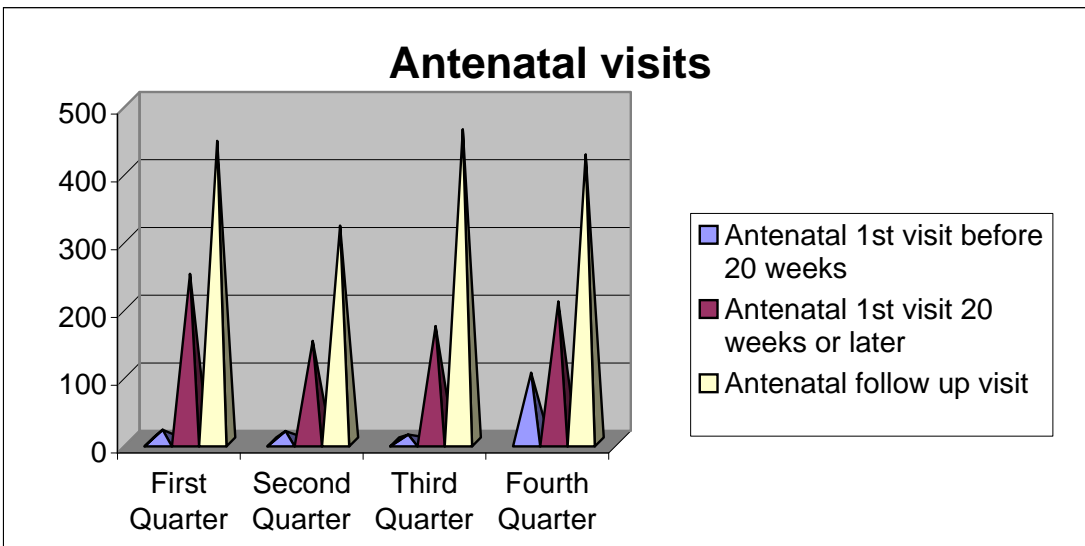


DEPARTMENT OF HEALTH

	First Quarter	Second Quarter	Third Quarter	Fourth Quarter
Child not gaining weight under 5yrs	1	0	3	3
Severe malnutrition under 5yrs	1	0	0	0
Underweight under 5yrs	3	0	2	0

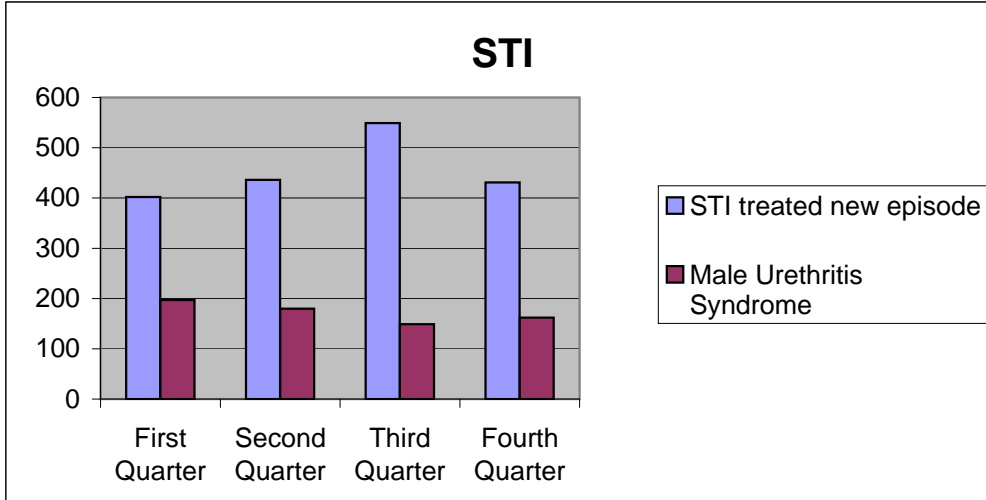


	First Quarter	Second Quarter	Third Quarter	Fourth Quarter
Antenatal 1st visit before 20 weeks	18	16	11	102
Antenatal 1st visit 20 weeks or later	248	149	171	207
Antenatal follow up visit	444	319	461	424

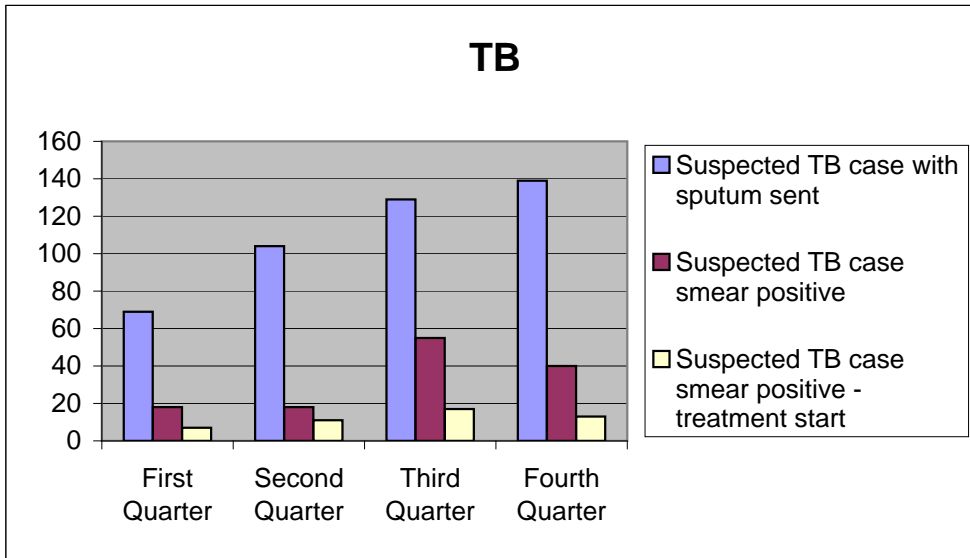


DEPARTMENT OF HEALTH

	First Quarter	Second Quarter	Third Quarter	Fourth Quarter
STI treated new episode	402	436	549	431
Male Urethritis Syndrome	197	180	149	162



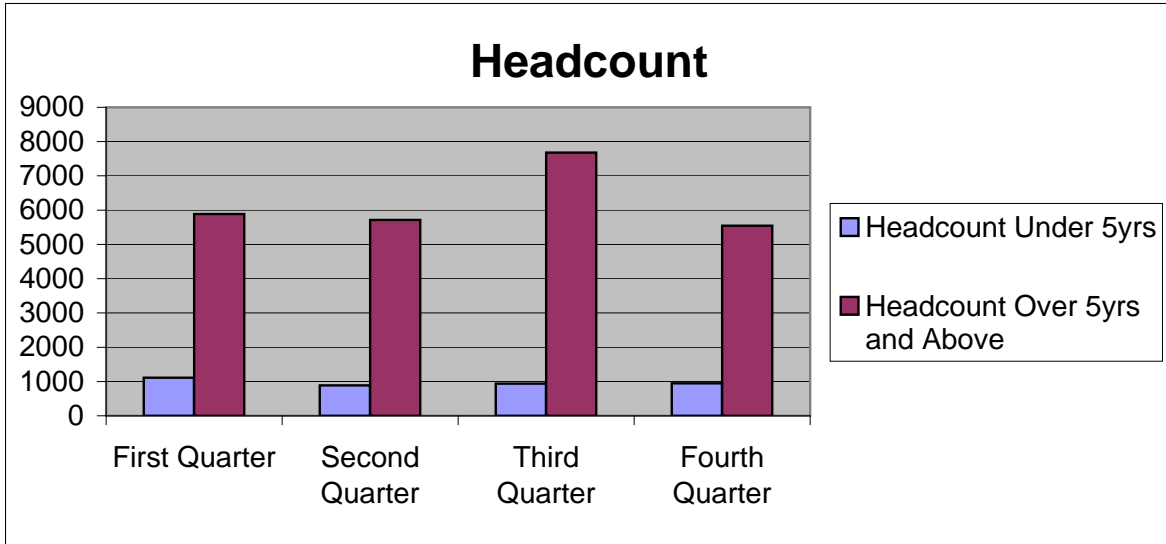
	First Quarter	Second Quarter	Third Quarter	Fourth Quarter
Suspected TB case with sputum sent	69	104	129	139
Suspected TB case smear positive	18	18	55	40
Suspected TB case smear positive - treatment start	7	11	17	13



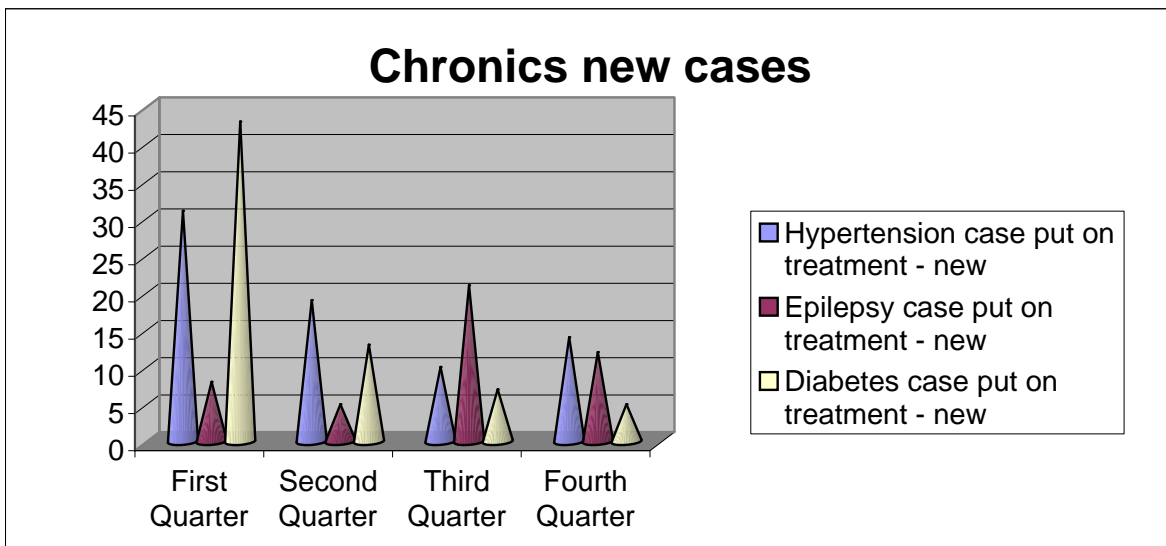
DEPARTMENT OF HEALTH

FREDVILLE

	First Quarter	Second Quarter	Third Quarter	Fourth Quarter
Headcount Under 5yrs	1110	888	937	947
Headcount Over 5yrs and Above	5885	5716	7677	5545

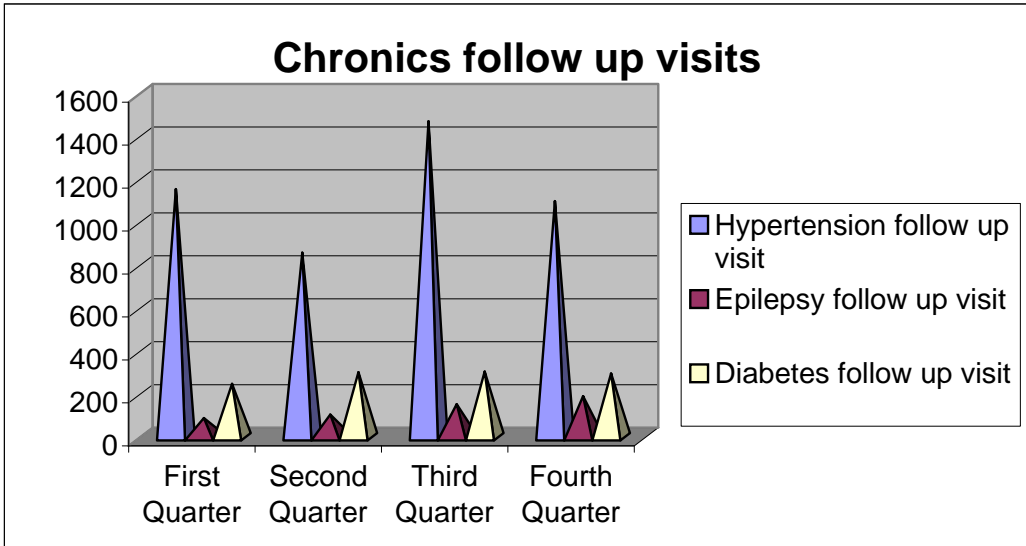


	First Quarter	Second Quarter	Third Quarter	Fourth Quarter
Hypertension case put on treatment - new	31	19	10	14
Epilepsy case put on treatment - new	8	5	21	12
Diabetes case put on treatment - new	43	13	7	5

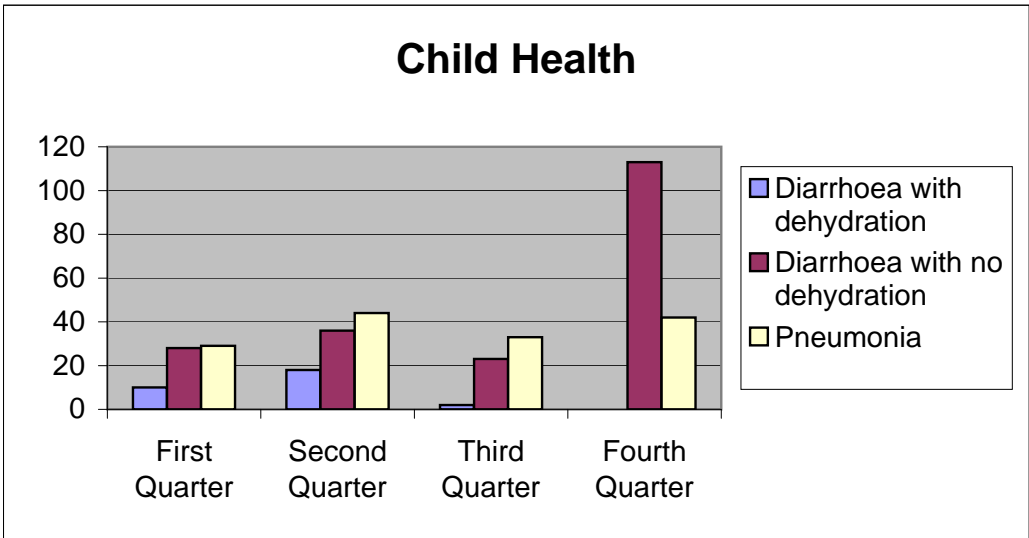


DEPARTMENT OF HEALTH

	First Quarter	Second Quarter	Third Quarter	Fourth Quarter
Hypertension follow up visit	1153	857	1469	1097
Epilepsy follow up visit	87	104	152	189
Diabetes follow up visit	247	301	304	295

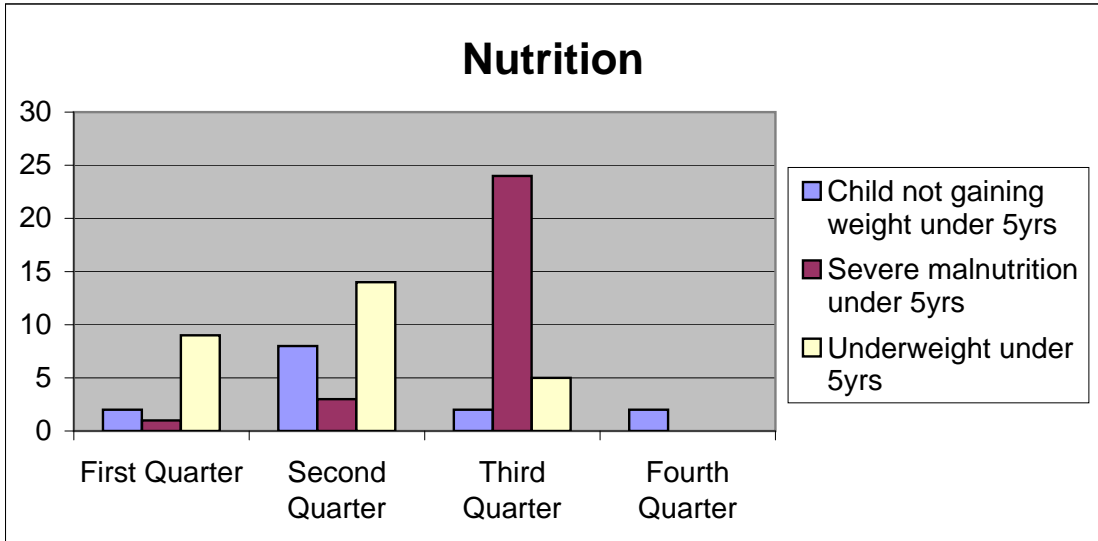


	First Quarter	Second Quarter	Third Quarter	Fourth Quarter
Diarrhoea with dehydration	10	18	2	0
Diarrhoea with no dehydration	28	36	23	113
Pneumonia	29	44	33	42

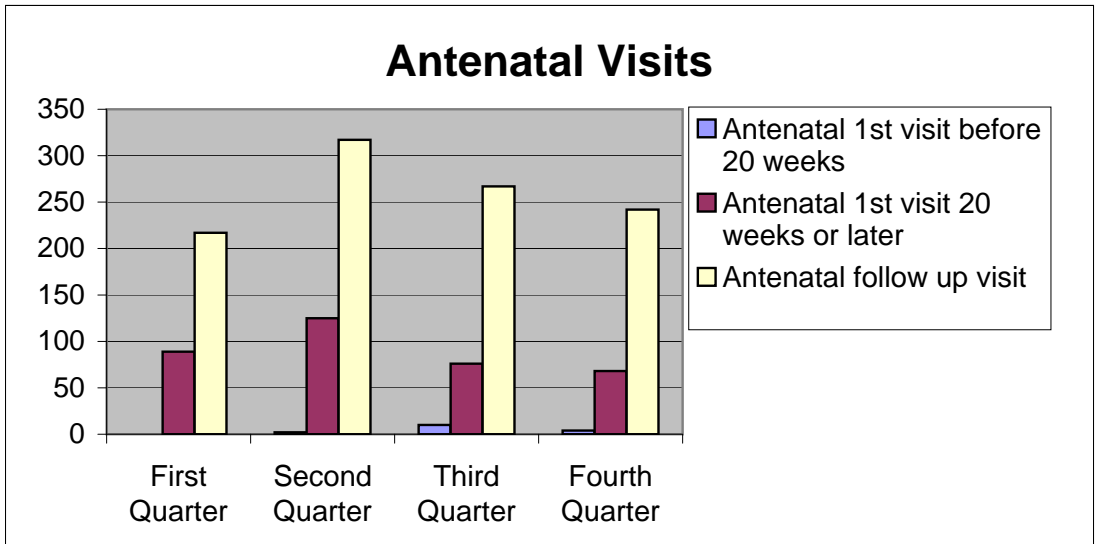


DEPARTMENT OF HEALTH

	First Quarter	Second Quarter	Third Quarter	Fourth Quarter
Child not gaining weight under 5yrs	2	8	2	2
Severe malnutrition under 5yrs	1	3	24	0
Underweight under 5yrs	9	14	5	0

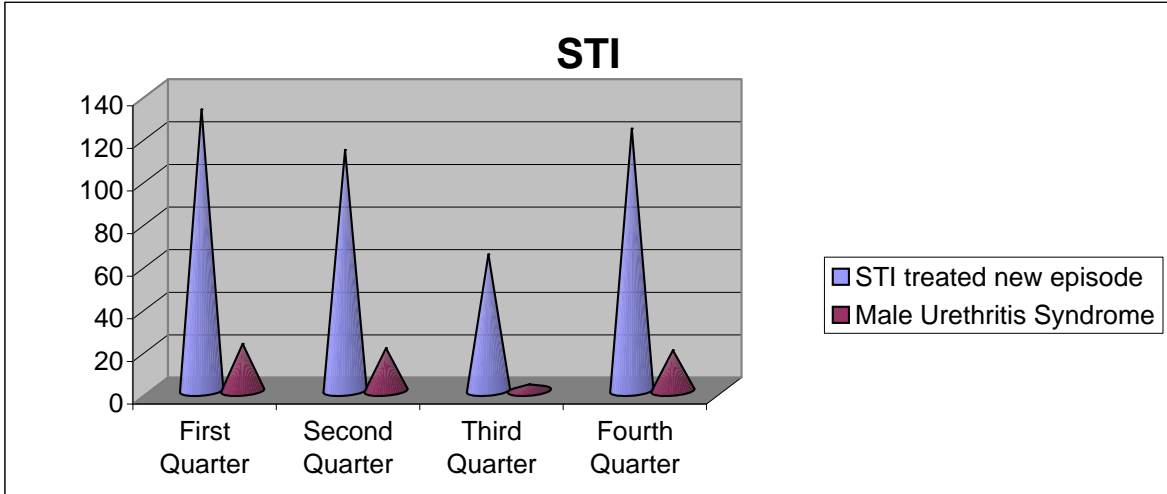


	First Quarter	Second Quarter	Third Quarter	Fourth Quarter
Antenatal 1st visit before 20 weeks	0	2	10	4
Antenatal 1st visit 20 weeks or later	89	125	76	68
Antenatal follow up visit	217	317	267	242

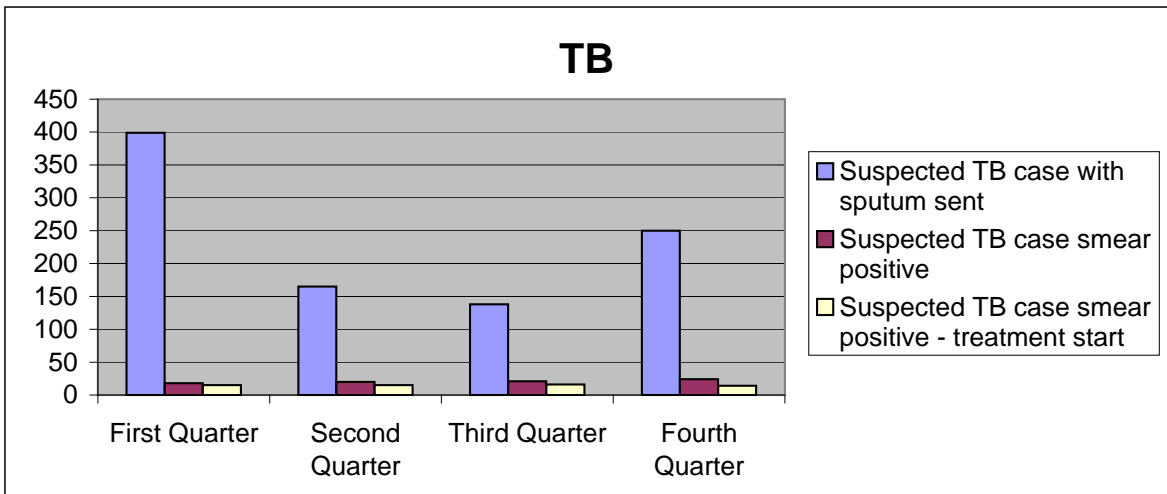


DEPARTMENT OF HEALTH

	First Quarter	Second Quarter	Third Quarter	Fourth Quarter
STI treated new episode	132	113	64	123
Male Urethritis Syndrome	22	20	3	19



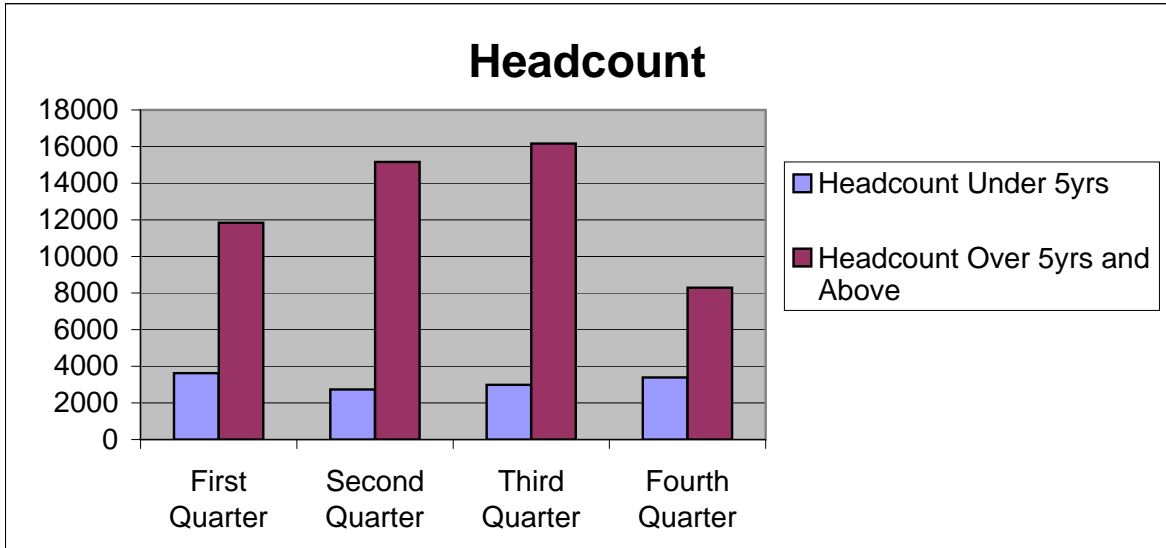
	First Quarter	Second Quarter	Third Quarter	Fourth Quarter
Suspected TB case with sputum sent	399	165	138	250
Suspected TB case smear positive	18	20	21	24
Suspected TB case smear positive - treatment start	15	15	16	14



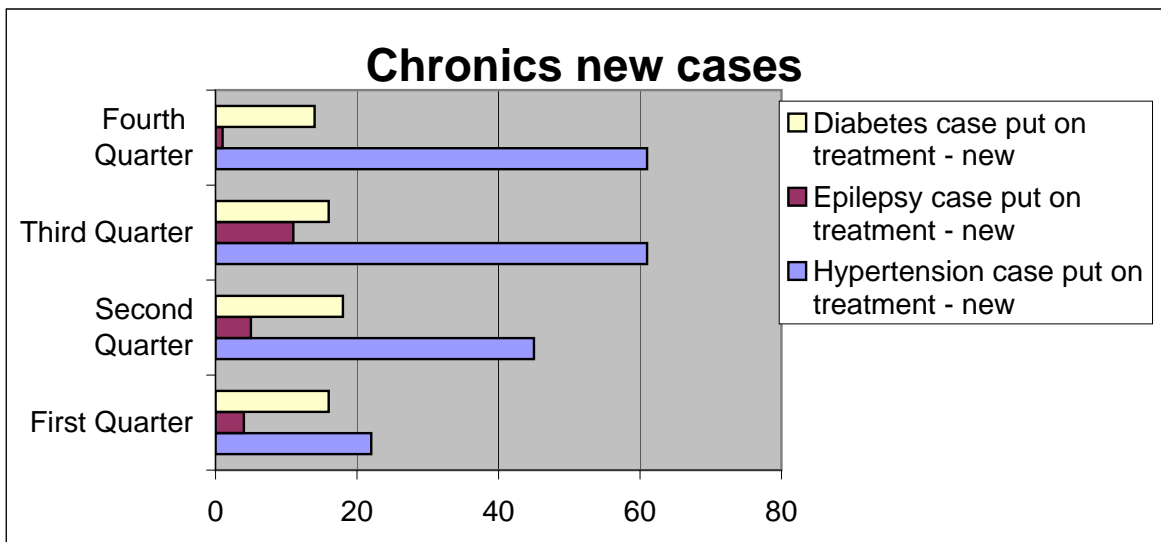
DEPARTMENT OF HEALTH

KWANDENGEZI

	First Quarter	Second Quarter	Third Quarter	Fourth Quarter
Headcount Under 5yrs	3625	2738	2987	3389
Headcount Over 5yrs and Above	11836	15164	16169	8295

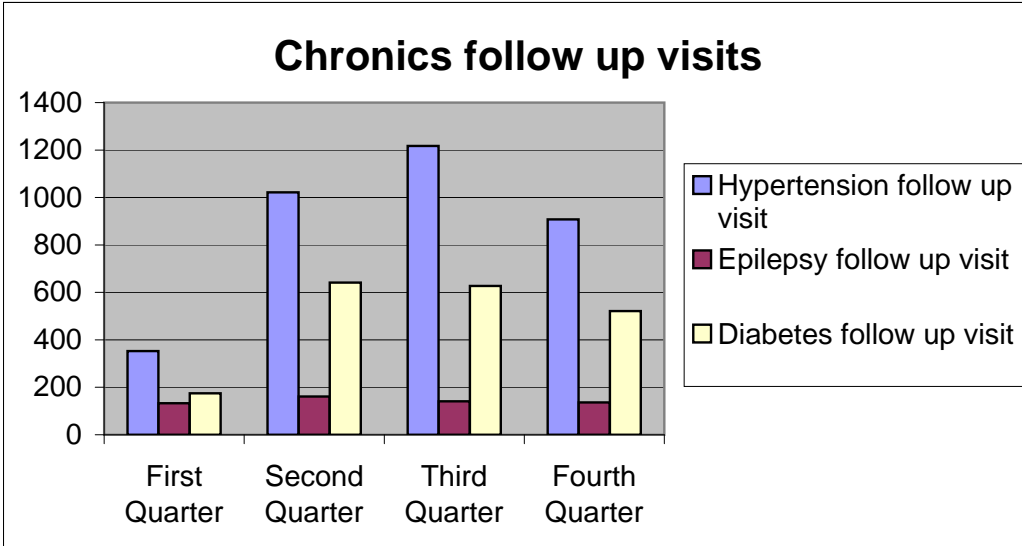


	First Quarter	Second Quarter	Third Quarter	Fourth Quarter
Hypertension case put on treatment - new	22	45	61	61
Epilepsy case put on treatment - new	4	5	11	1
Diabetes case put on treatment - new	16	18	16	14

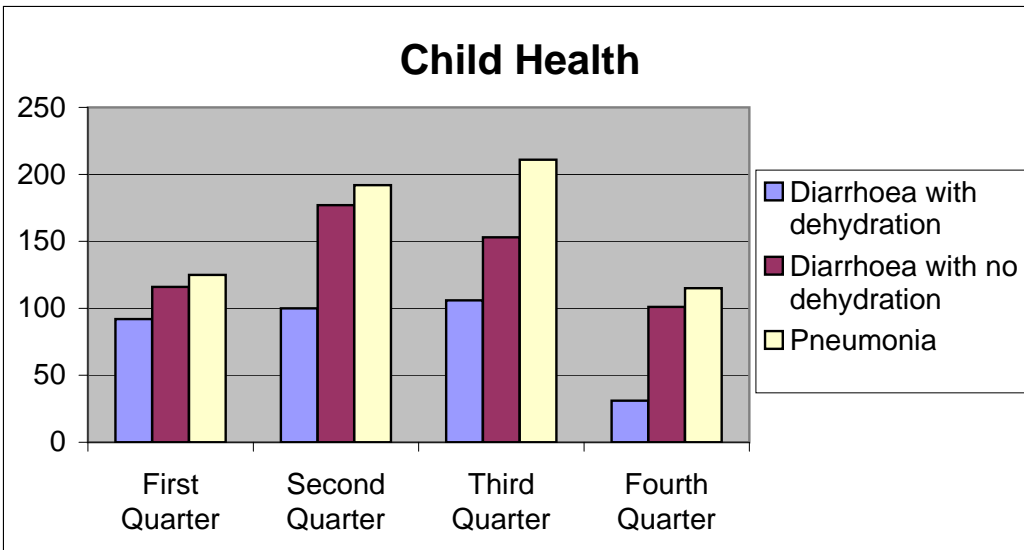


DEPARTMENT OF HEALTH

	First Quarter	Second Quarter	Third Quarter	Fourth Quarter
Hypertension follow up visit	353	1022	1217	908
Epilepsy follow up visit	133	161	141	136
Diabetes follow up visit	175	641	627	521

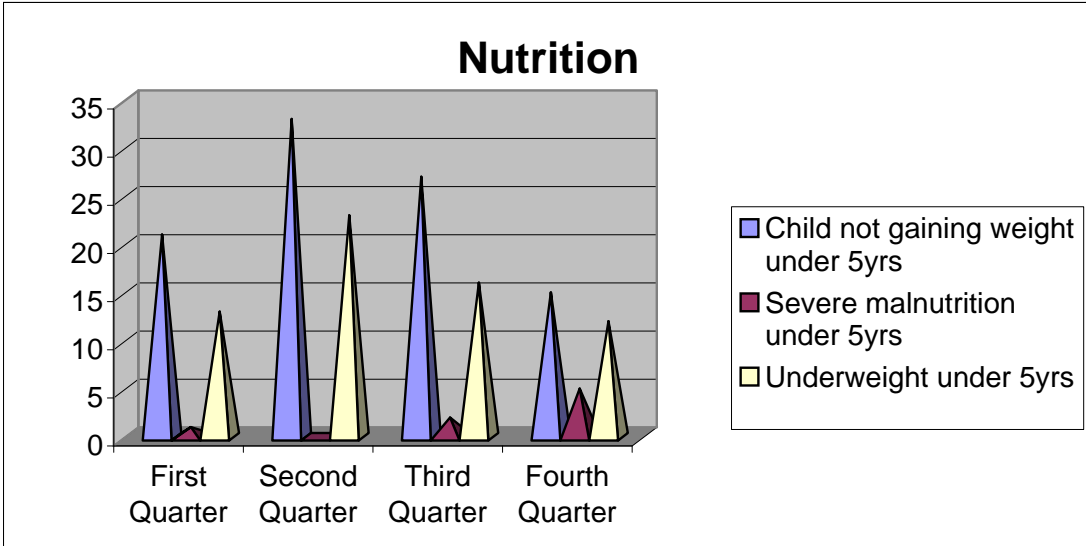


	First Quarter	Second Quarter	Third Quarter	Fourth Quarter
Diarrhoea with dehydration	92	100	106	31
Diarrhoea with no dehydration	116	177	153	101
Pneumonia	125	192	211	115

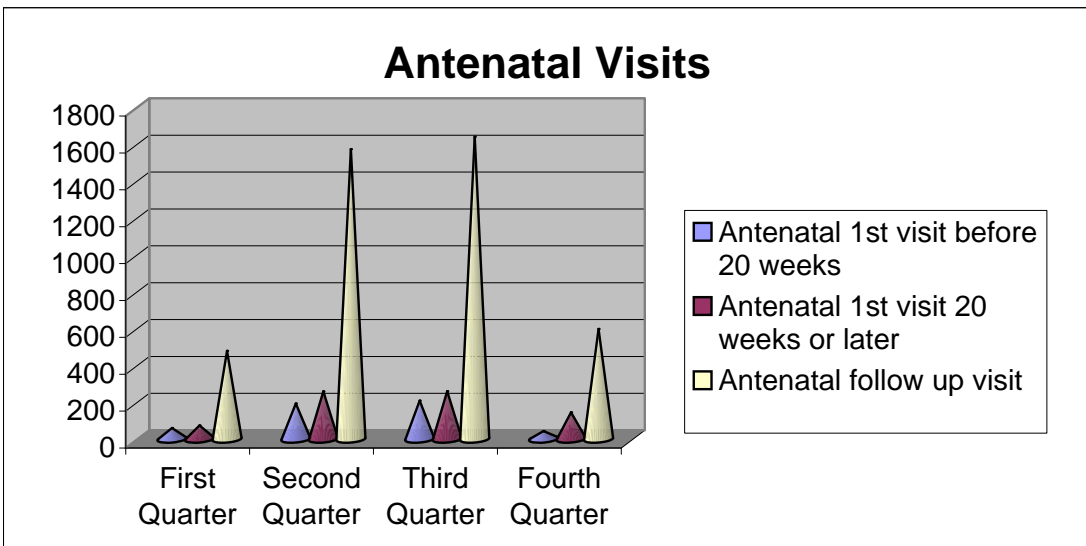


DEPARTMENT OF HEALTH

	First Quarter	Second Quarter	Third Quarter	Fourth Quarter
Child not gaining weight under 5yrs	21	33	27	15
Severe malnutrition under 5yrs	1	0	2	5
Underweight under 5yrs	13	23	16	12

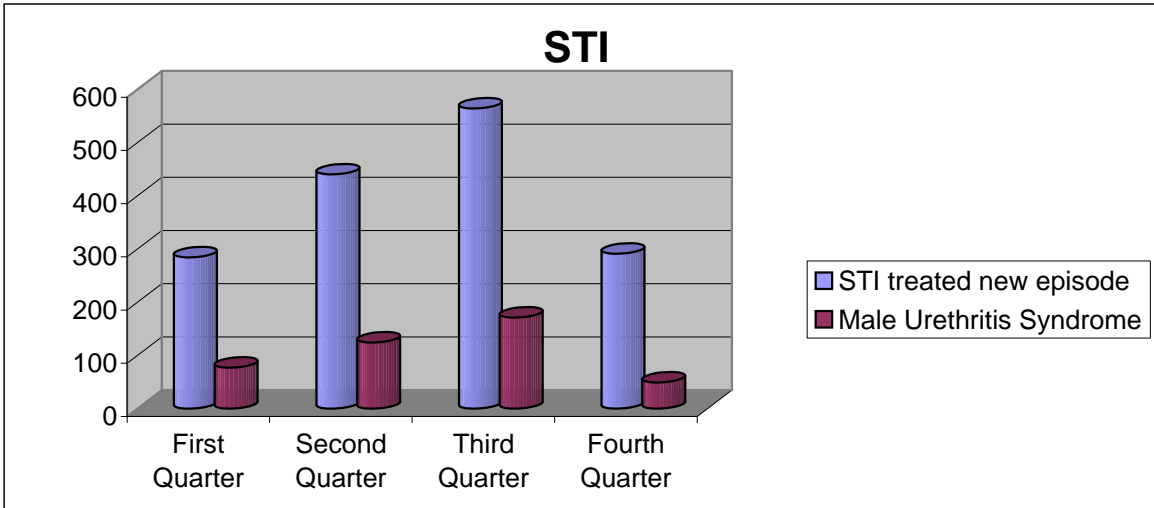


	First Quarter	Second Quarter	Third Quarter	Fourth Quarter
Antenatal 1st visit before 20 weeks	60	193	209	44
Antenatal 1st visit 20 weeks or later	74	259	260	145
Antenatal follow up visit	478	1572	1639	597

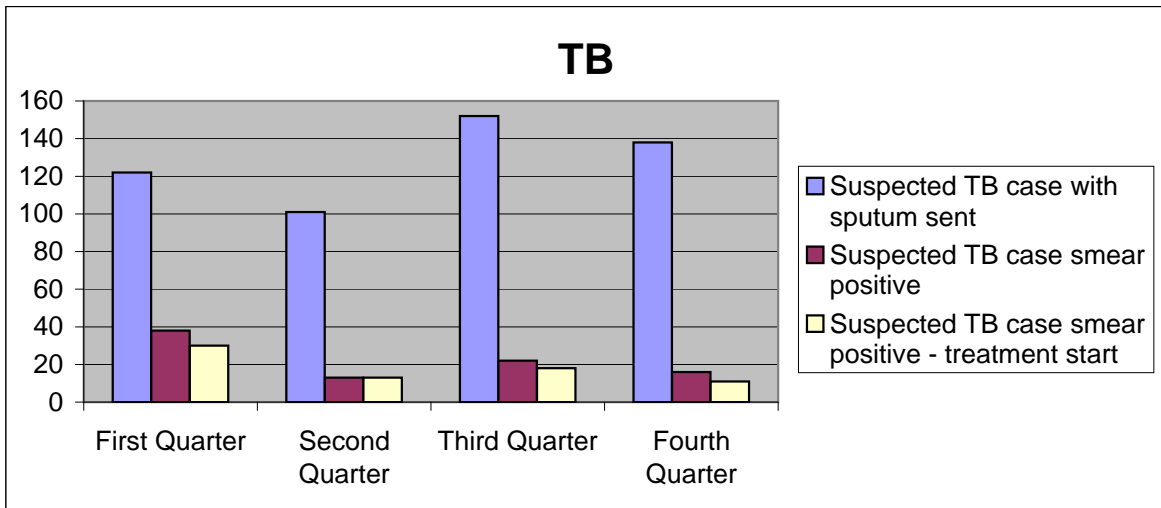


DEPARTMENT OF HEALTH

	First Quarter	Second Quarter	Third Quarter	Fourth Quarter
STI treated new episode	284	440	564	291
Male Urethritis Syndrome	77	124	171	49



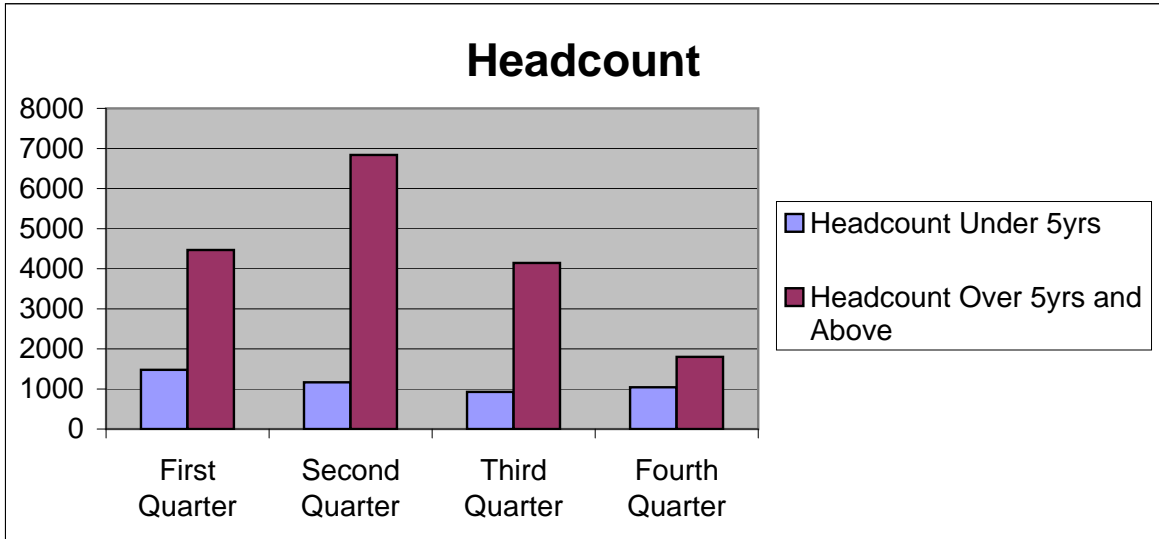
	First Quarter	Second Quarter	Third Quarter	Fourth Quarter
Suspected TB case with sputum sent	122	101	152	138
Suspected TB case smear positive	38	13	22	16
Suspected TB case smear positive - treatment start	30	13	18	11



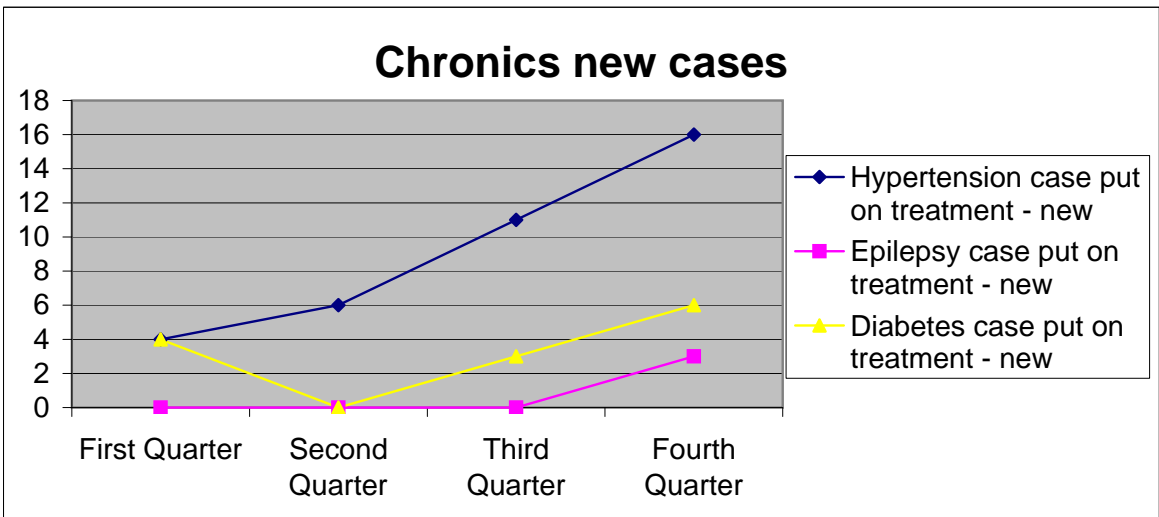
DEPARTMENT OF HEALTH

MOLWENI

	First Quarter	Second Quarter	Third Quarter	Fourth Quarter
Headcount Under 5yrs	1477	1166	925	1040
Headcount Over 5yrs and Above	4467	6840	4142	1801

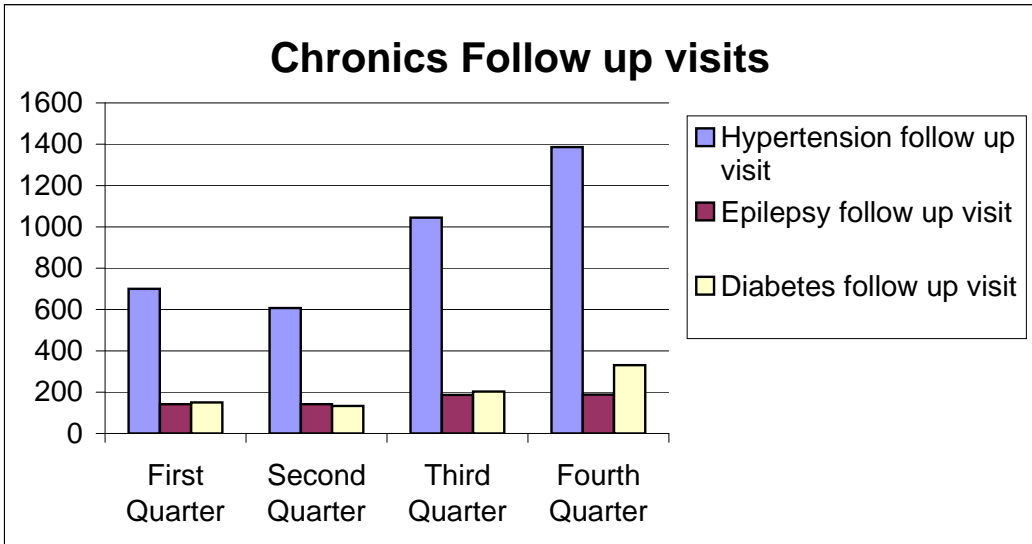


	First Quarter	Second Quarter	Third Quarter	Fourth Quarter
Hypertension case put on treatment - new	4	6	11	16
Epilepsy case put on treatment - new	0	0	0	3
Diabetes case put on treatment - new	4	0	3	6

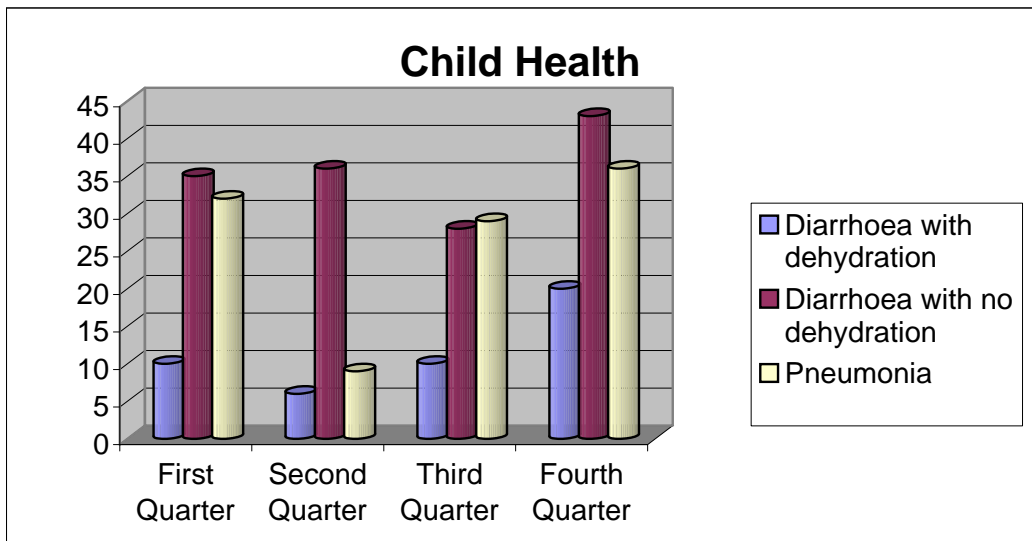


DEPARTMENT OF HEALTH

	First Quarter	Second Quarter	Third Quarter	Fourth Quarter
Hypertension follow up visit	700	607	1045	1386
Epilepsy follow up visit	142	142	187	188
Diabetes follow up visit	150	133	203	331

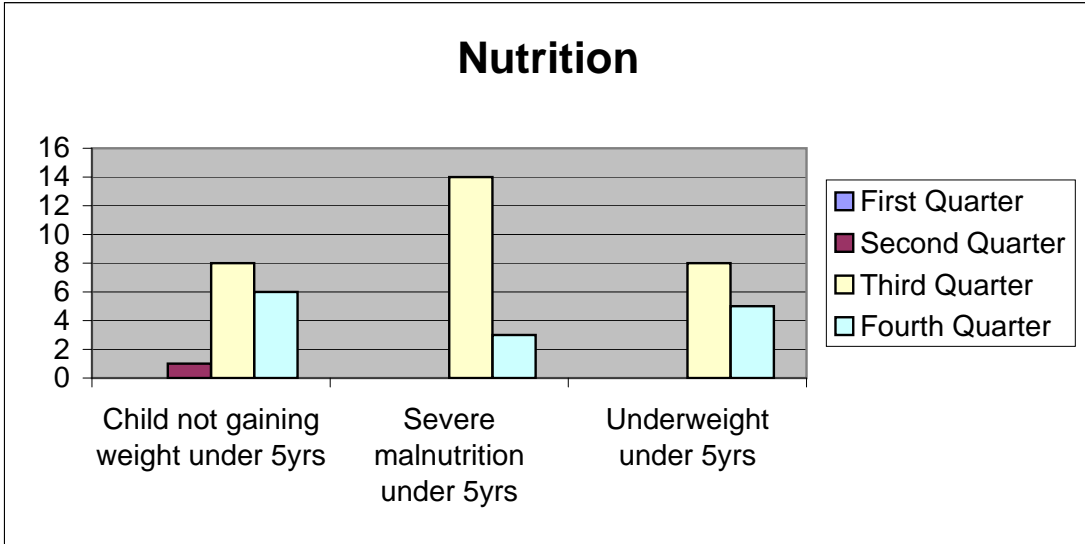


	First Quarter	Second Quarter	Third Quarter	Fourth Quarter
Diarrhoea with dehydration	10	6	10	20
Diarrhoea with no dehydration	35	36	28	43
Pneumonia	32	9	29	36

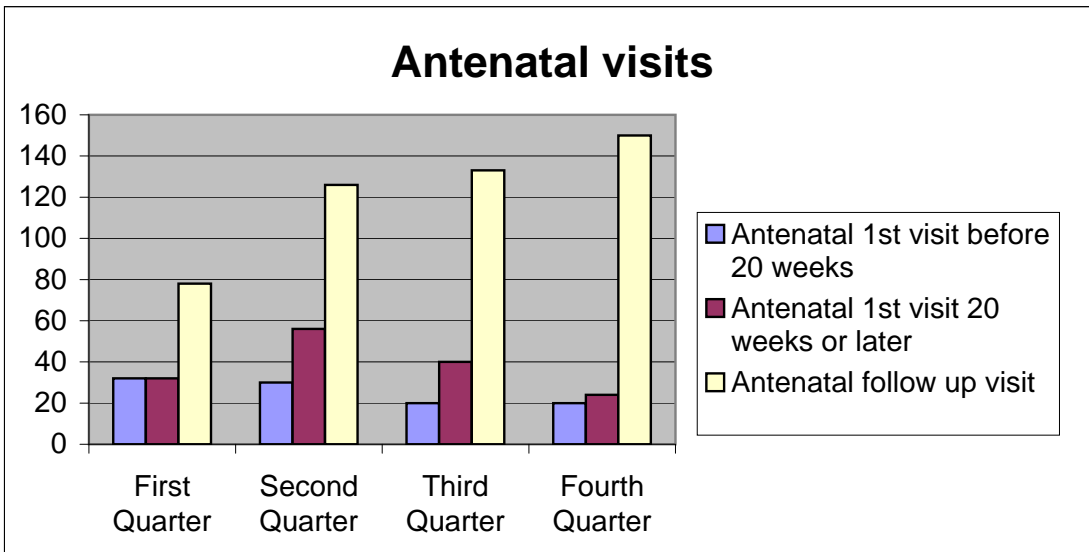


DEPARTMENT OF HEALTH

	First Quarter	Second Quarter	Third Quarter	Fourth Quarter
Child not gaining weight under 5yrs	0	1	8	6
Severe malnutrition under 5yrs	0	0	14	3
Underweight under 5yrs	0	0	8	5

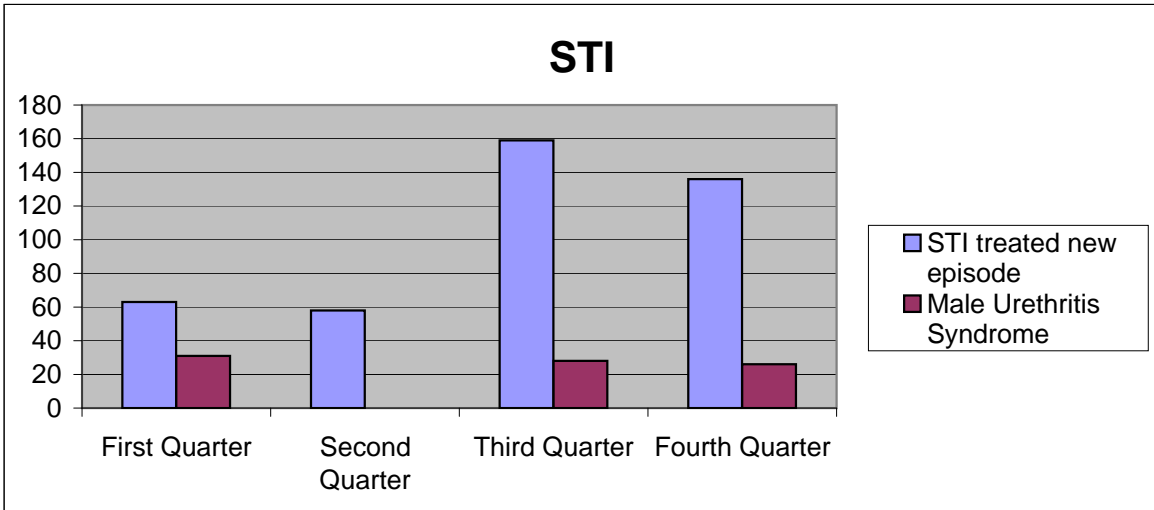


	First Quarter	Second Quarter	Third Quarter	Fourth Quarter
Antenatal 1st visit before 20 weeks	32	30	20	20
Antenatal 1st visit 20 weeks or later	32	56	40	24
Antenatal follow up visit	78	126	133	150

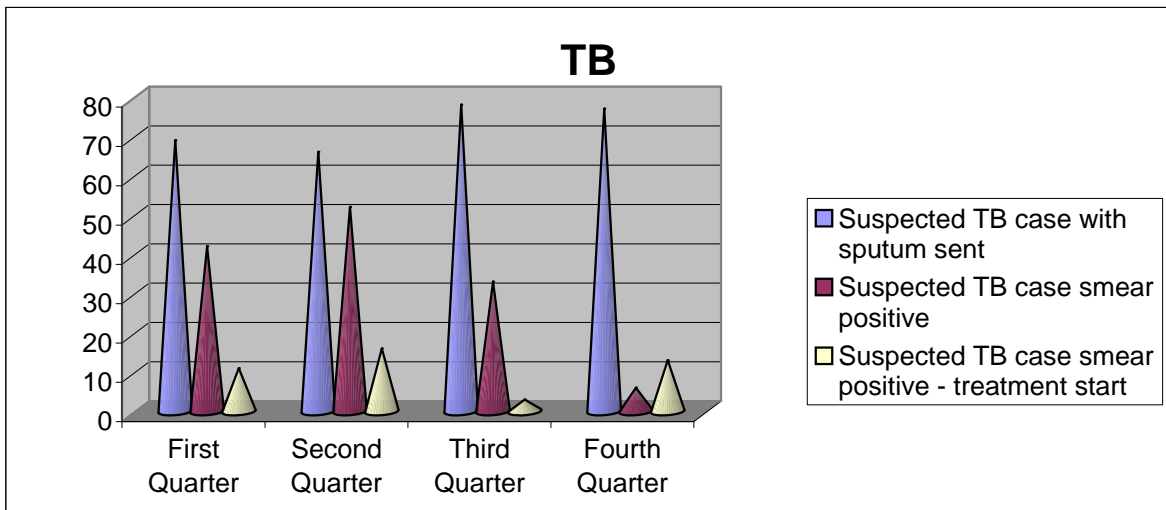


DEPARTMENT OF HEALTH

	First Quarter	Second Quarter	Third Quarter	Fourth Quarter
STI treated new episode	63	58	159	136
Male Urethritis Syndrome	31	0	28	26



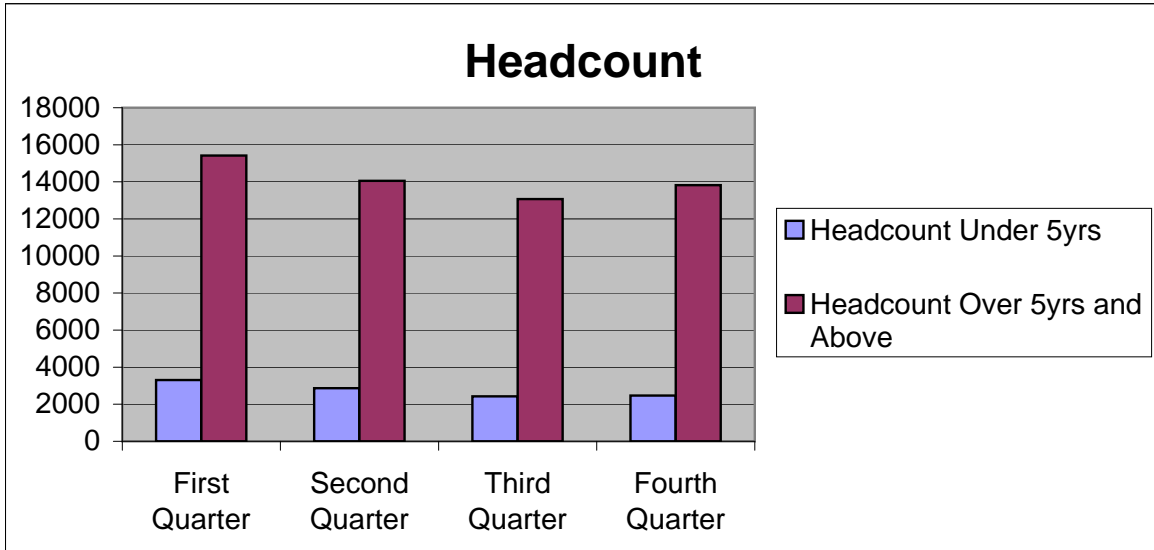
	First Quarter	Second Quarter	Third Quarter	Fourth Quarter
Suspected TB case with sputum sent	69	66	78	77
Suspected TB case smear positive	42	52	33	6
Suspected TB case smear positive - treatment start	11	16	3	13



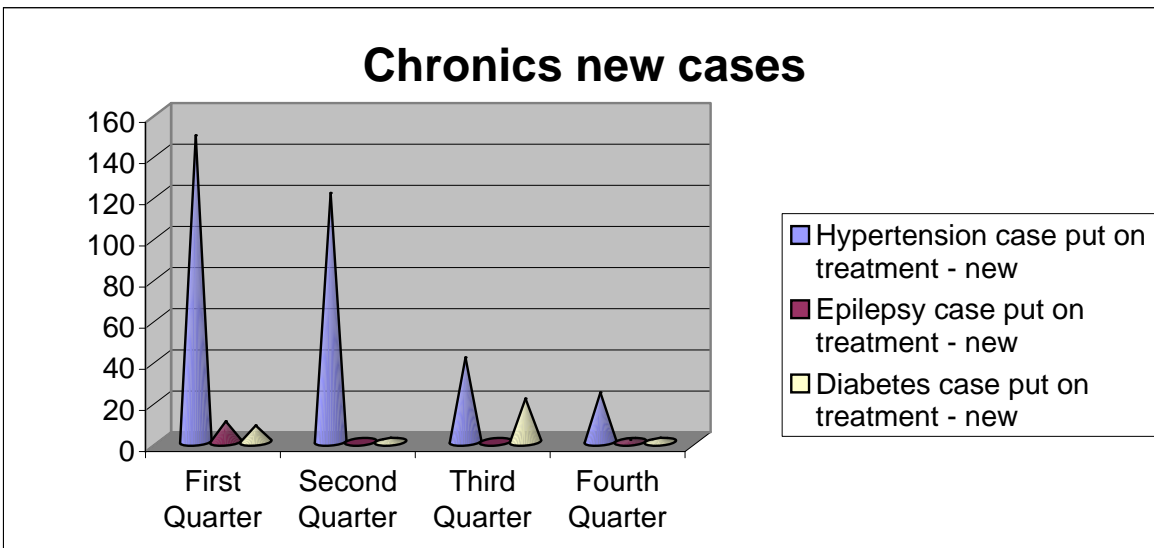
DEPARTMENT OF HEALTH

MPUMALANGA

	First Quarter	Second Quarter	Third Quarter	Fourth Quarter
Headcount Under 5yrs	3303	2862	2425	2467
Headcount Over 5yrs and Above	15418	14052	13069	13822

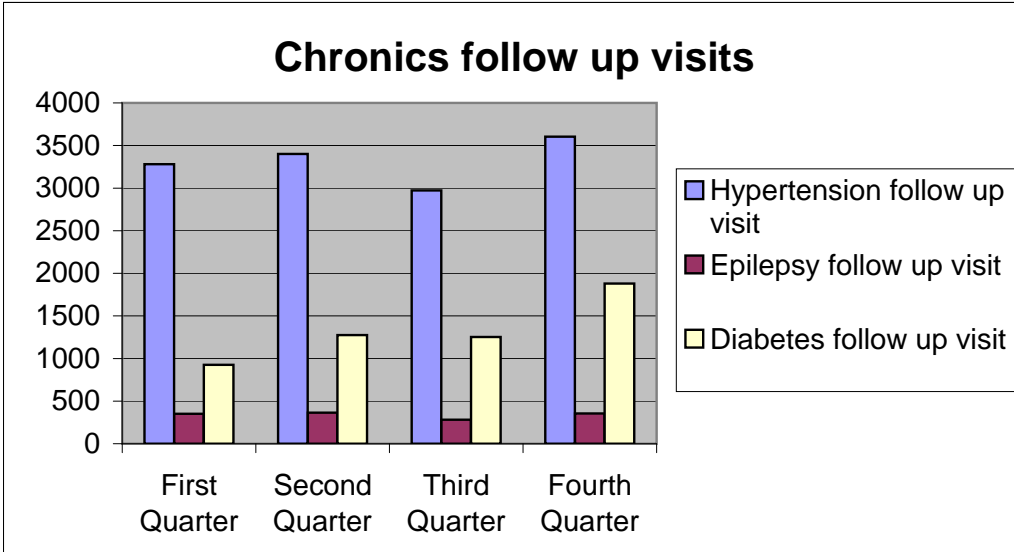


	First Quarter	Second Quarter	Third Quarter	Fourth Quarter
Hypertension case put on treatment - new	149	121	41	24
Epilepsy case put on treatment - new	10	0	0	1
Diabetes case put on treatment - new	8	2	21	2

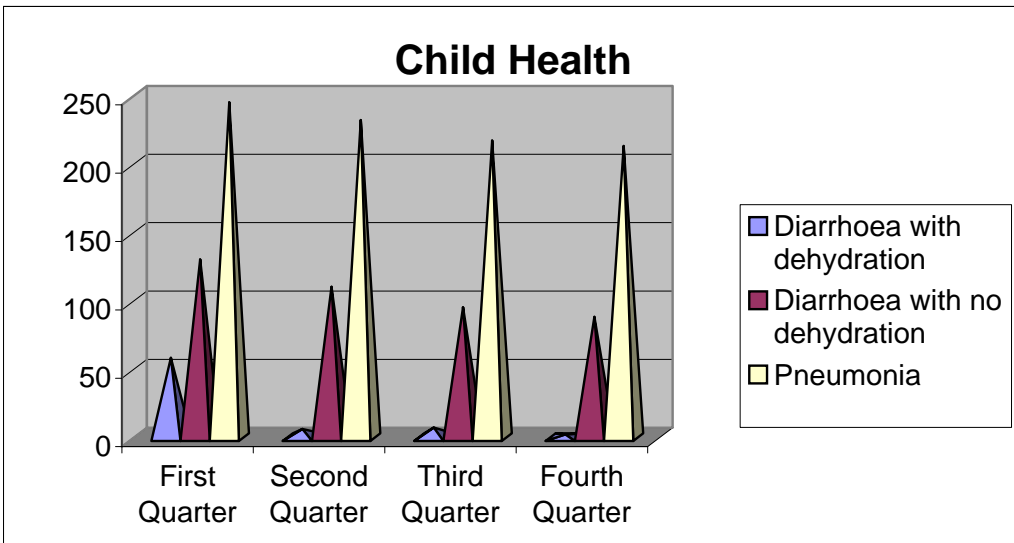


DEPARTMENT OF HEALTH

	First Quarter	Second Quarter	Third Quarter	Fourth Quarter
Hypertension follow up visit	3280	3401	2972	3603
Epilepsy follow up visit	352	365	282	354
Diabetes follow up visit	925	1275	1252	1879

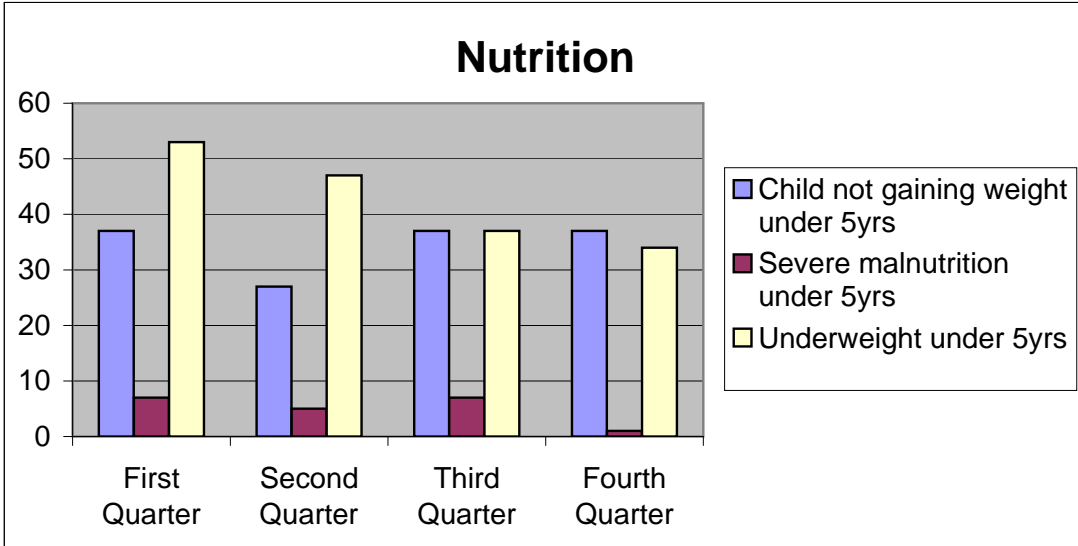


	First Quarter	Second Quarter	Third Quarter	Fourth Quarter
Diarrhoea with dehydration	58	6	7	2
Diarrhoea with no dehydration	130	110	95	88
Pneumonia	245	232	217	213

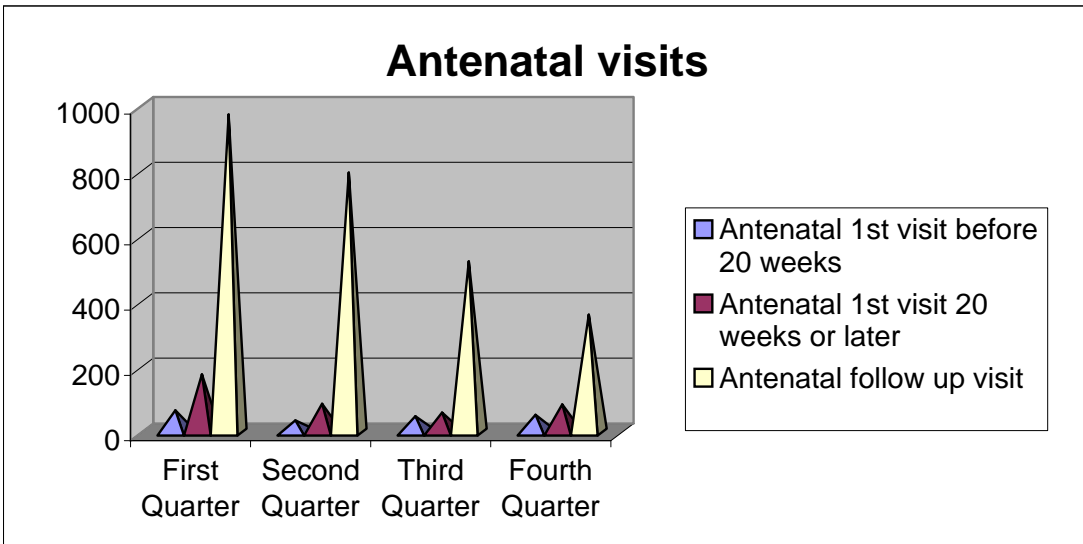


DEPARTMENT OF HEALTH

	First Quarter	Second Quarter	Third Quarter	Fourth Quarter
Child not gaining weight under 5yrs	37	27	37	37
Severe malnutrition under 5yrs	7	5	7	1
Underweight under 5yrs	53	47	37	34

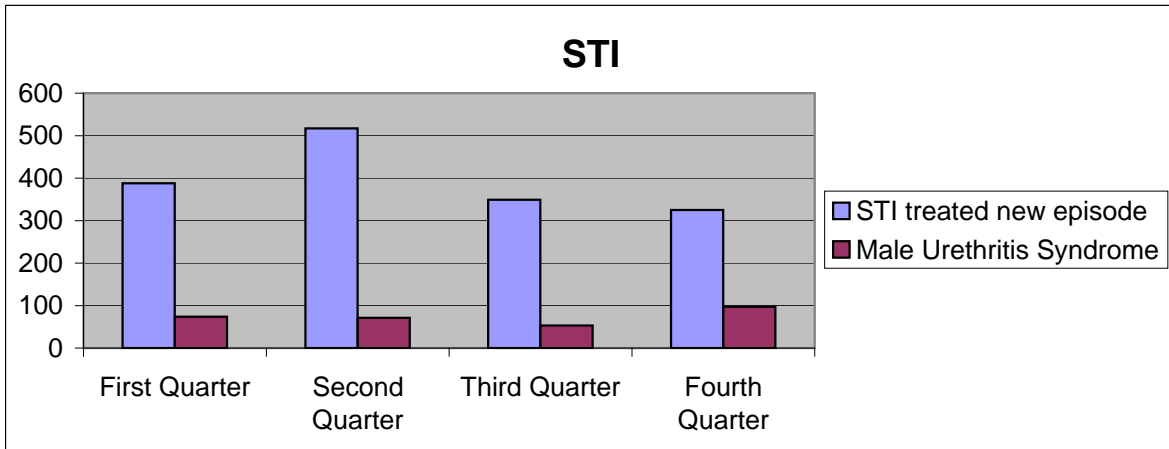


	First Quarter	Second Quarter	Third Quarter	Fourth Quarter
Antenatal 1st visit before 20 weeks	67	36	49	53
Antenatal 1st visit 20 weeks or later	177	87	60	85
Antenatal follow up visit	973	795	523	360

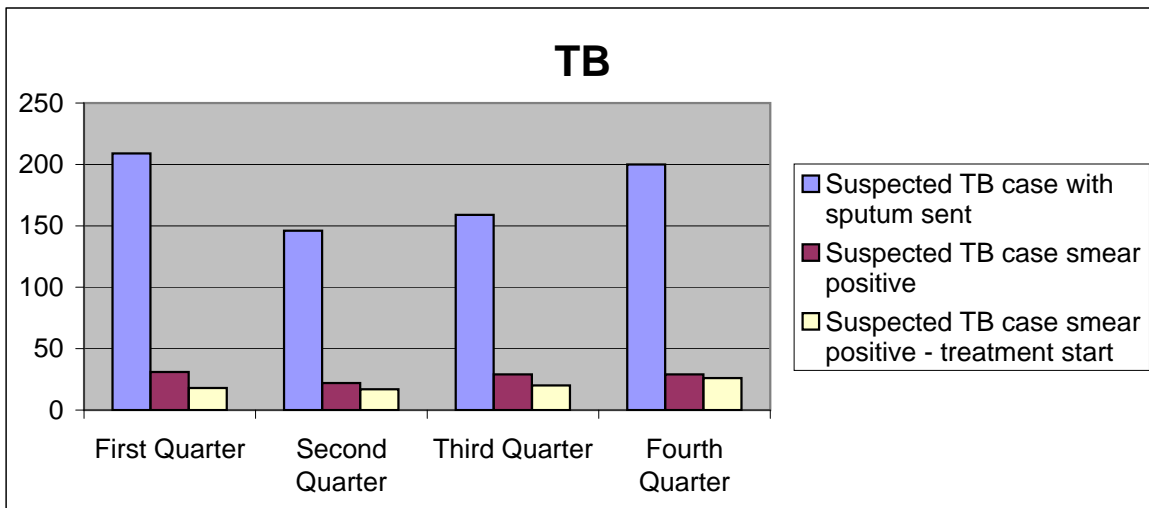


DEPARTMENT OF HEALTH

	First Quarter	Second Quarter	Third Quarter	Fourth Quarter
STI treated new episode	388	517	349	325
Male Urethritis Syndrome	74	71	53	97



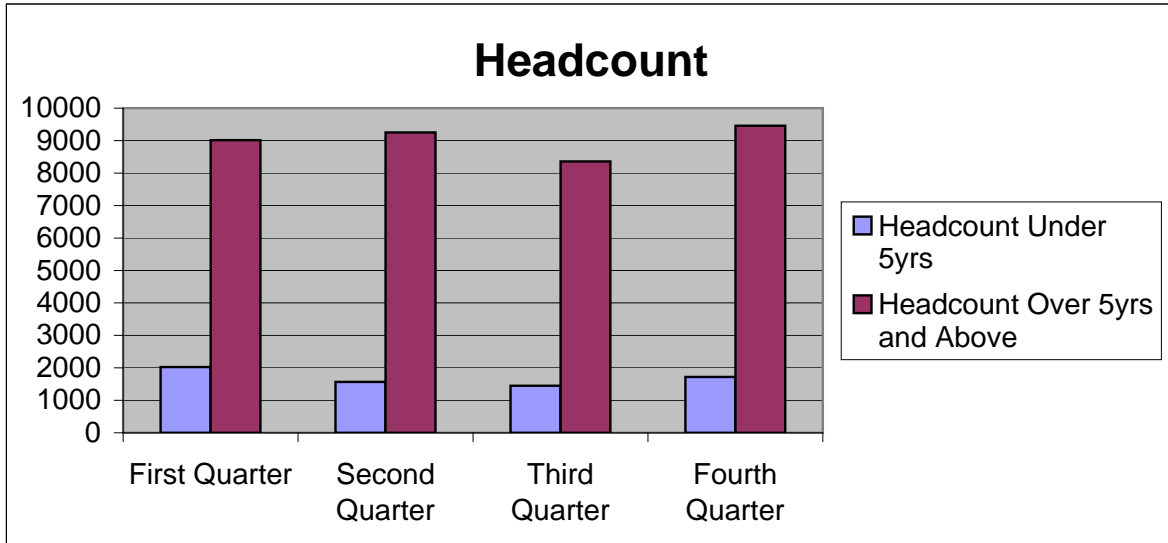
	First Quarter	Second Quarter	Third Quarter	Fourth Quarter
Suspected TB case with sputum sent	209	146	159	200
Suspected TB case smear positive	31	22	29	29
Suspected TB case smear positive - treatment start	18	17	20	26



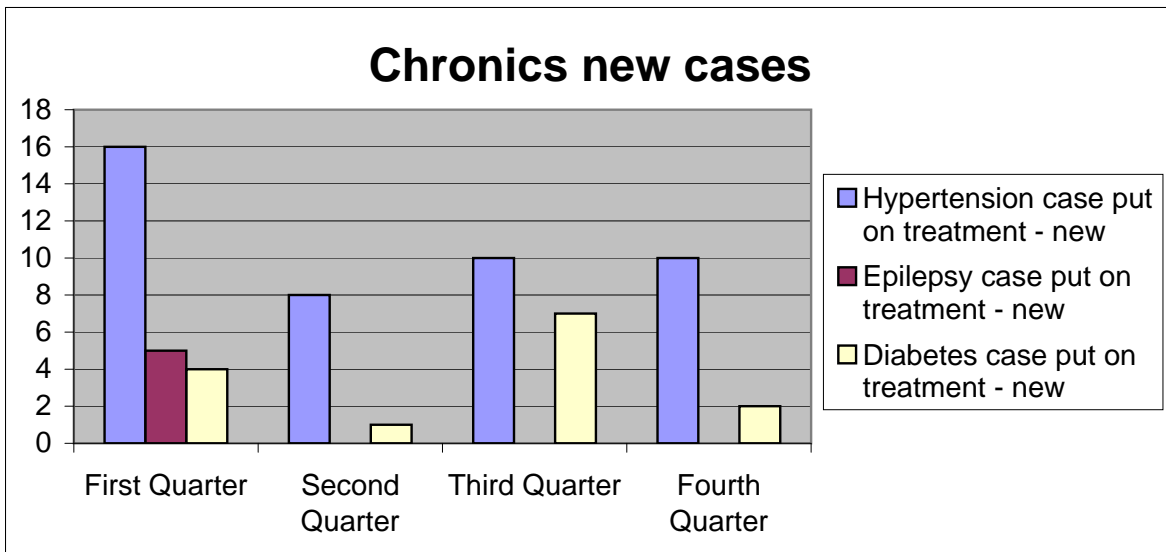
DEPARTMENT OF HEALTH

MSUNDUZI

	First Quarter	Second Quarter	Third Quarter	Fourth Quarter
Headcount Under 5yrs	2027	1565	1448	1722
Headcount Over 5yrs and Above	9013	9251	8361	9460

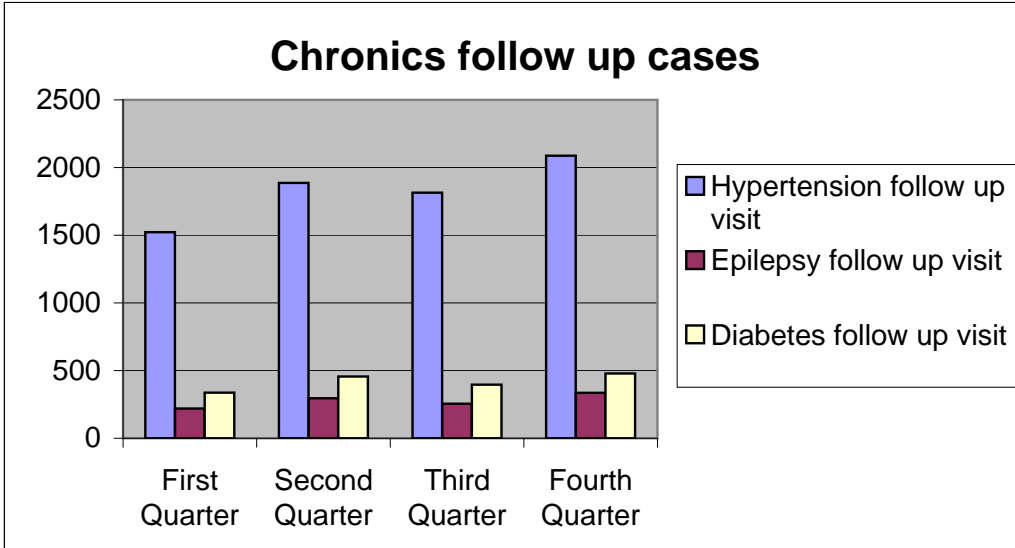


	First Quarter	Second Quarter	Third Quarter	Fourth Quarter
Hypertension case put on treatment - new	16	8	10	10
Epilepsy case put on treatment - new	5	0	0	0
Diabetes case put on treatment - new	4	1	7	2

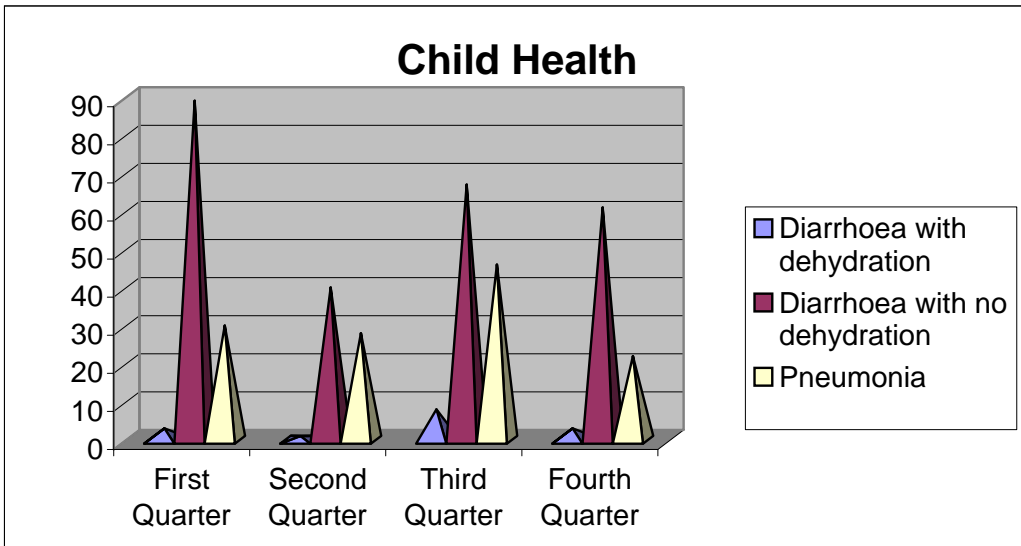


DEPARTMENT OF HEALTH

	First Quarter	Second Quarter	Third Quarter	Fourth Quarter
Hypertension follow up visit	1523	1886	1815	2087
Epilepsy follow up visit	220	296	255	336
Diabetes follow up visit	337	456	396	479

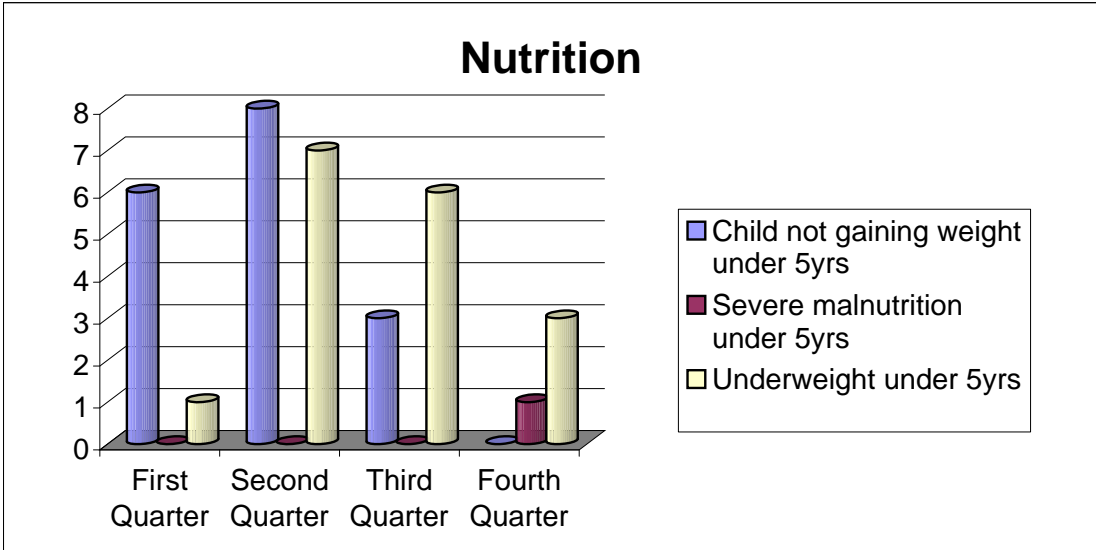


	First Quarter	Second Quarter	Third Quarter	Fourth Quarter
Diarrhoea with dehydration	3	1	8	3
Diarrhoea with no dehydration	89	40	67	61
Pneumonia	30	28	46	22

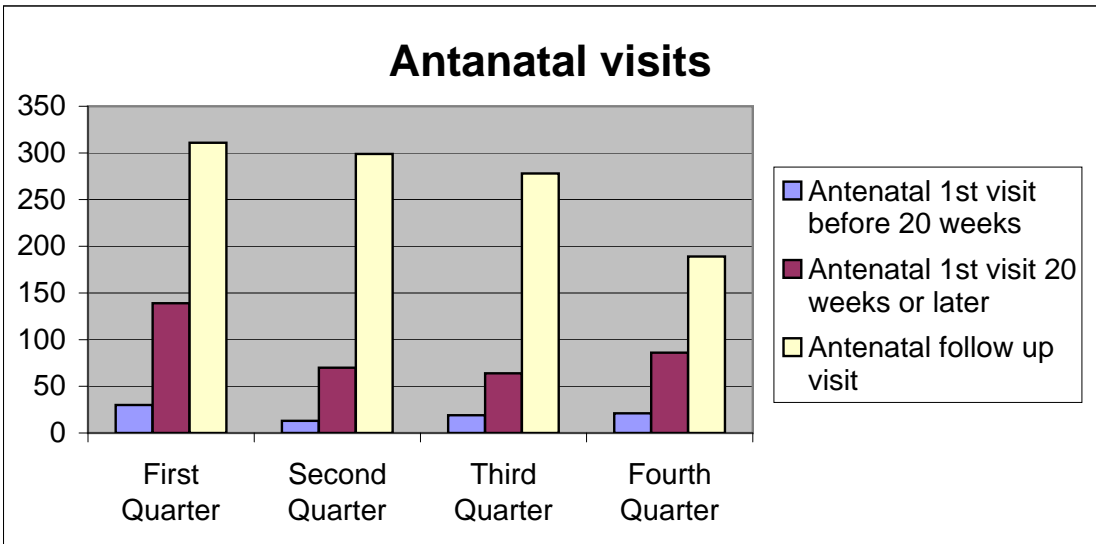


DEPARTMENT OF HEALTH

	First Quarter	Second Quarter	Third Quarter	Fourth Quarter
Child not gaining weight under 5yrs	6	8	3	0
Severe malnutrition under 5yrs	0	0	0	1
Underweight under 5yrs	1	7	6	3

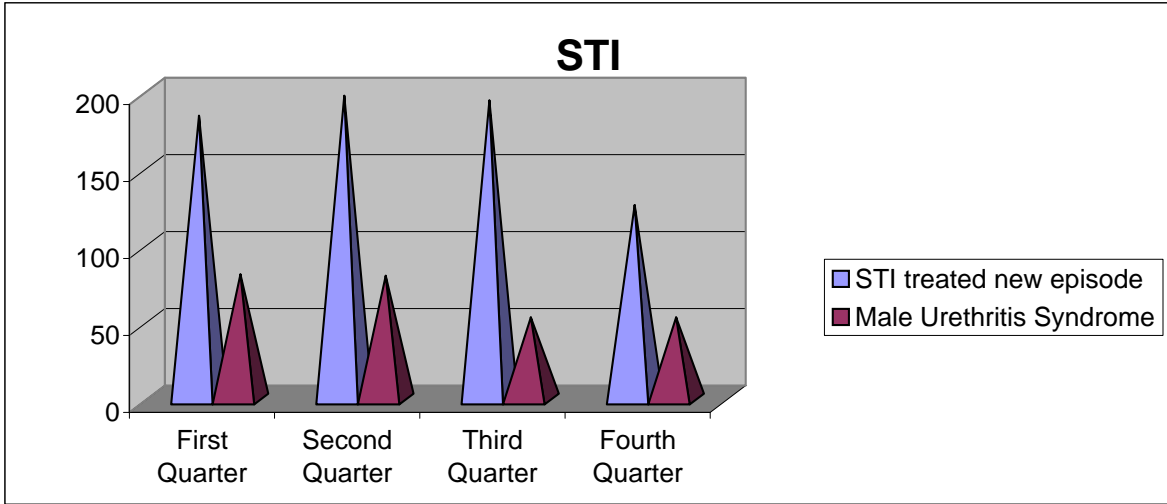


	First Quarter	Second Quarter	Third Quarter	Fourth Quarter
Antenatal 1st visit before 20 weeks	30	13	19	21
Antenatal 1st visit 20 weeks or later	139	70	64	86
Antenatal follow up visit	311	299	278	189

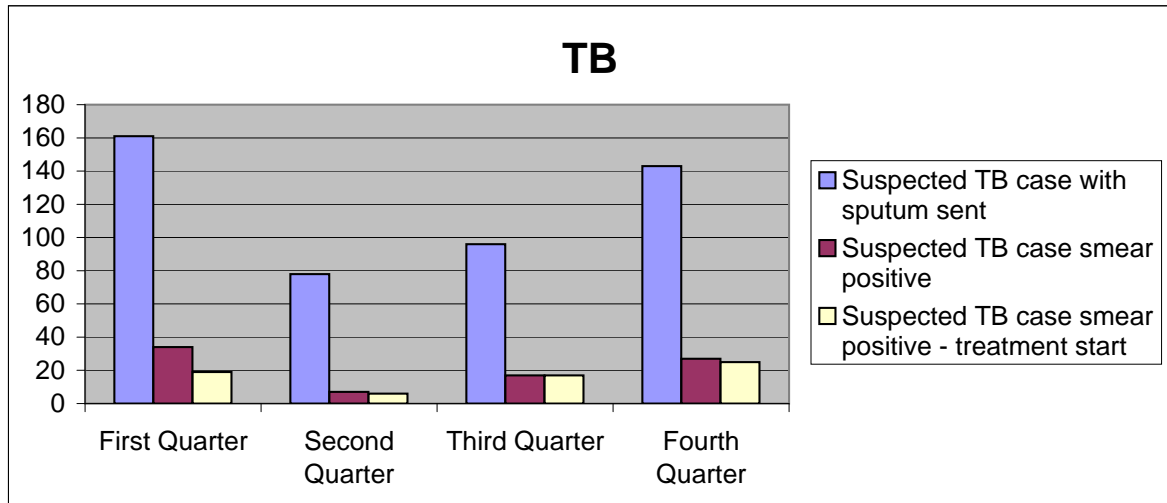


DEPARTMENT OF HEALTH

	First Quarter	Second Quarter	Third Quarter	Fourth Quarter
STI treated new episode	184	197	194	126
Male Urethritis Syndrome	81	80	53	53



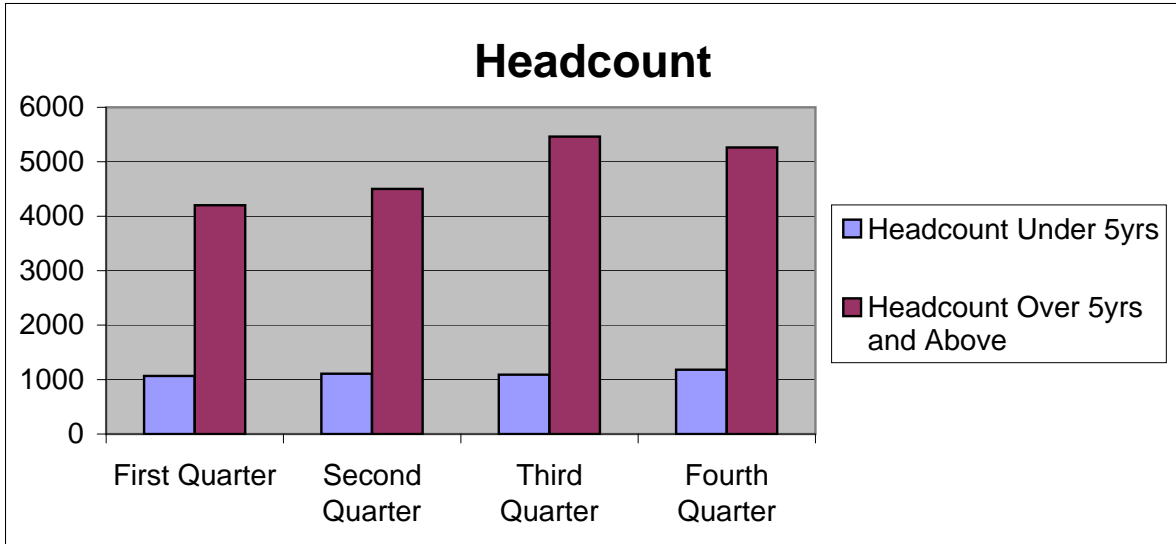
	First Quarter	Second Quarter	Third Quarter	Fourth Quarter
Suspected TB case with sputum sent	161	78	96	143
Suspected TB case smear positive	34	7	17	27
Suspected TB case smear positive - treatment start	19	6	17	25



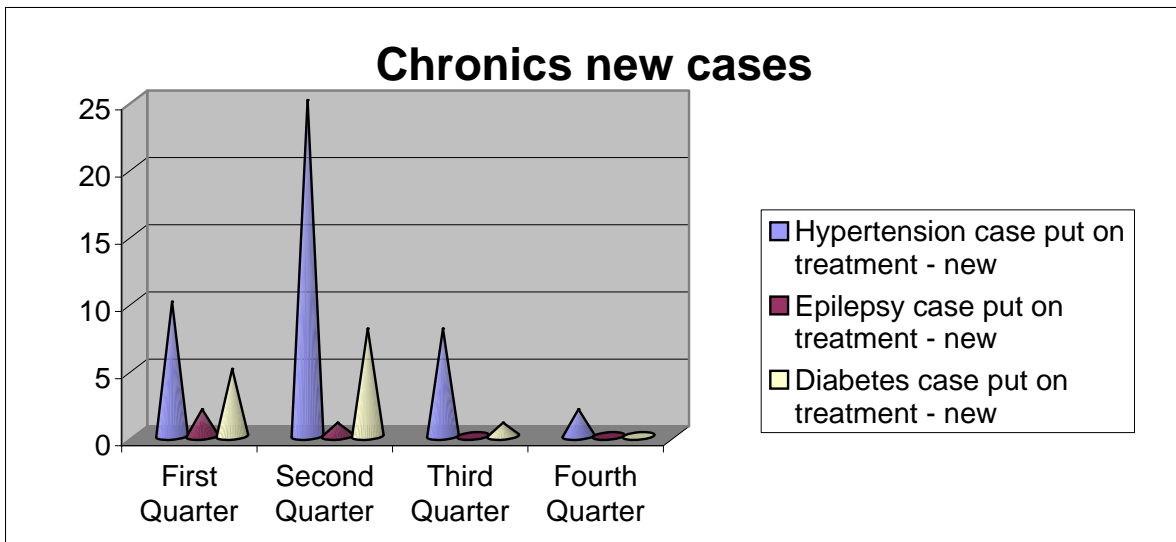
DEPARTMENT OF HEALTH

NGCOLOSI

	First Quarter	Second Quarter	Third Quarter	Fourth Quarter
Headcount Under 5yrs	1067	1108	1090	1182
Headcount Over 5yrs and Above	4201	4501	5461	5262

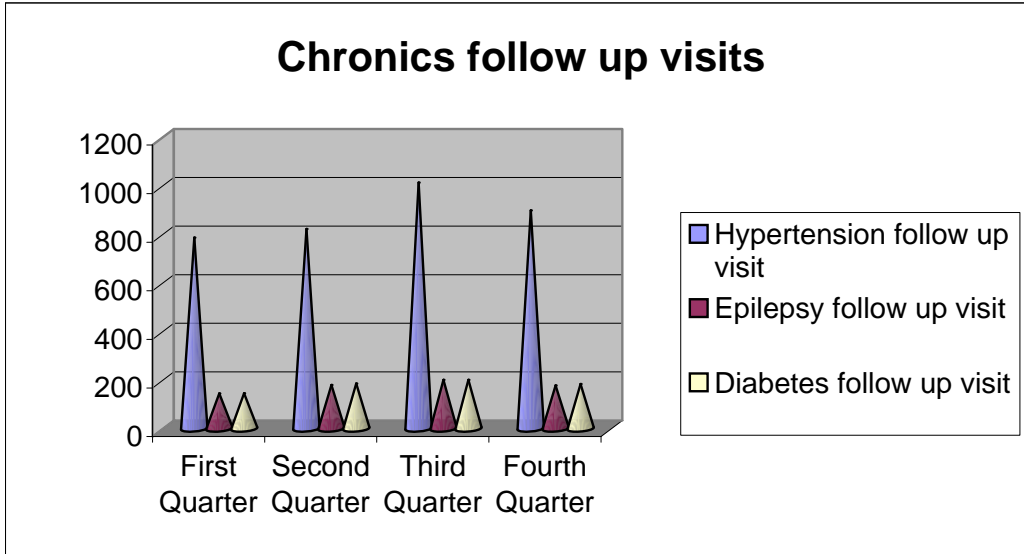


	First Quarter	Second Quarter	Third Quarter	Fourth Quarter
Hypertension case put on treatment - new	10	25	8	2
Epilepsy case put on treatment - new	2	1	0	0
Diabetes case put on treatment - new	5	8	1	0

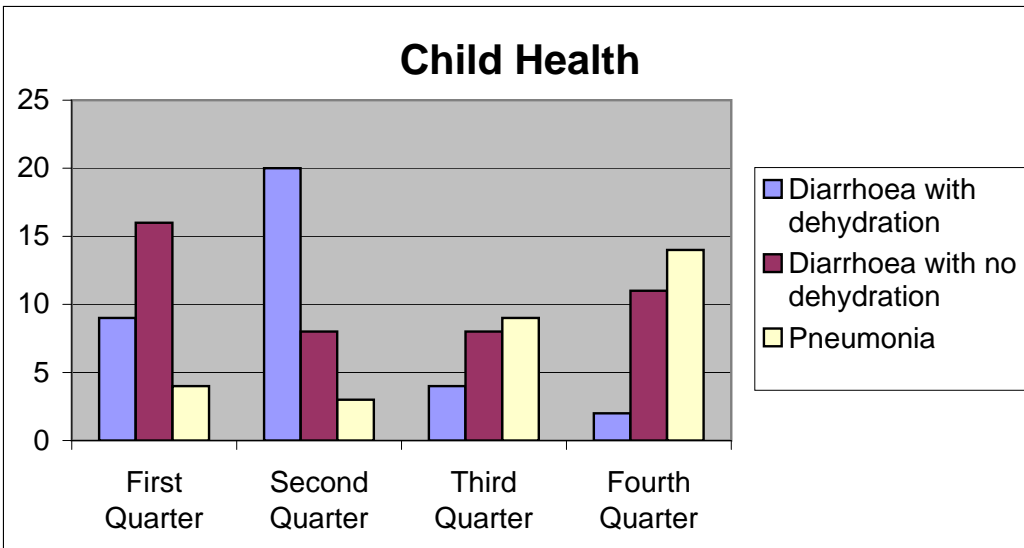


DEPARTMENT OF HEALTH

	First Quarter	Second Quarter	Third Quarter	Fourth Quarter
Hypertension follow up visit	786	821	1012	898
Epilepsy follow up visit	144	179	200	177
Diabetes follow up visit	145	185	200	183

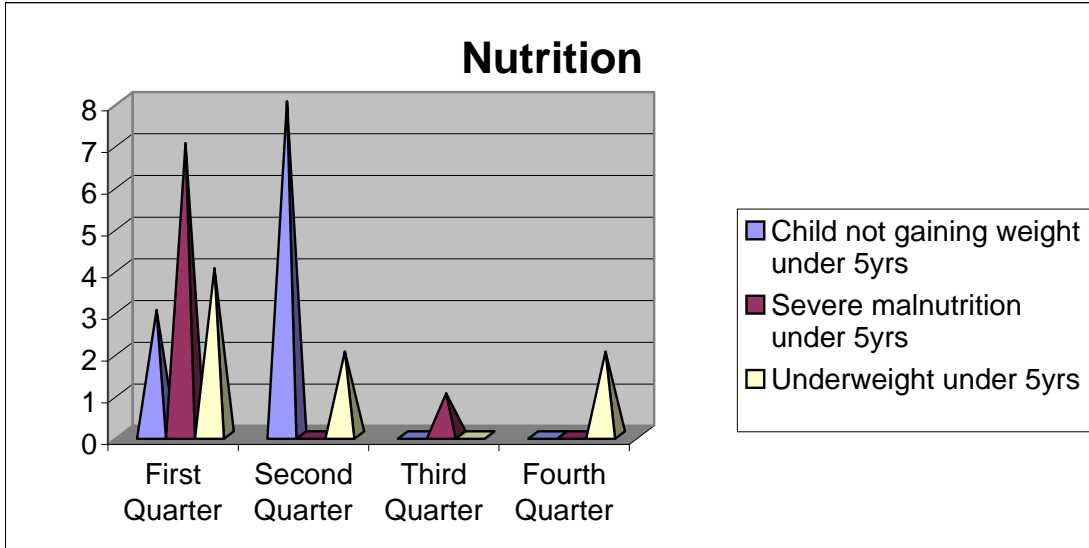


	First Quarter	Second Quarter	Third Quarter	Fourth Quarter
Diarrhoea with dehydration	9	20	4	2
Diarrhoea with no dehydration	16	8	8	11
Pneumonia	4	3	9	14

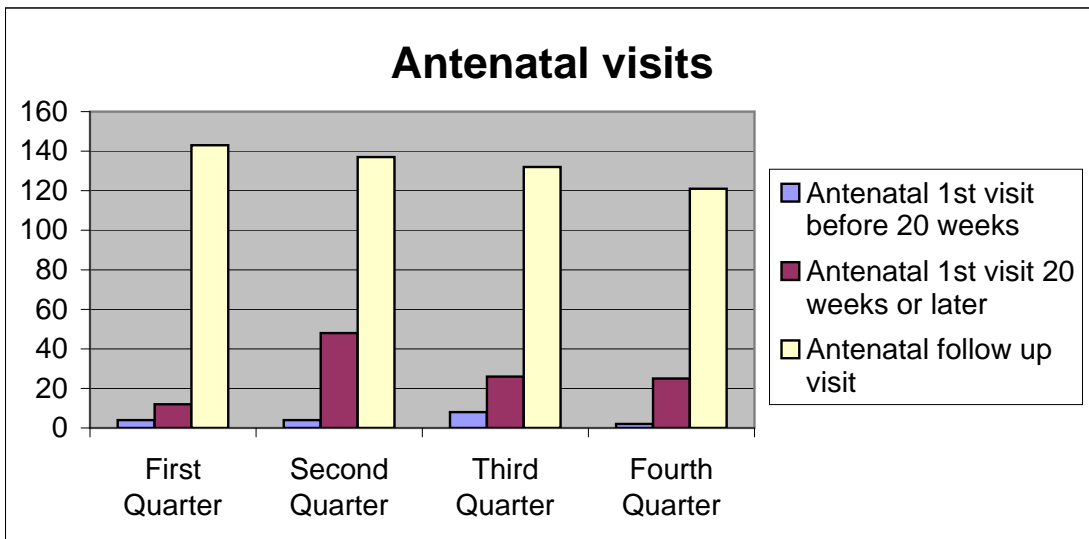


DEPARTMENT OF HEALTH

	First Quarter	Second Quarter	Third Quarter	Fourth Quarter
Child not gaining weight under 5yrs	3	8	0	0
Severe malnutrition under 5yrs	7	0	1	0
Underweight under 5yrs	4	2	0	2

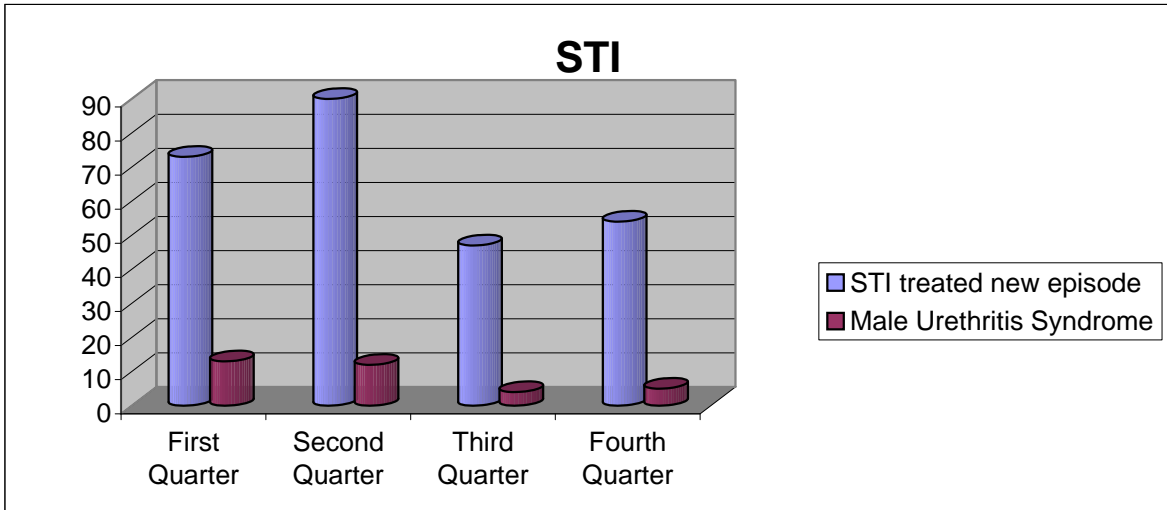


	First Quarter	Second Quarter	Third Quarter	Fourth Quarter
Antenatal 1st visit before 20 weeks	4	4	8	2
Antenatal 1st visit 20 weeks or later	12	48	26	25
Antenatal follow up visit	143	137	132	121

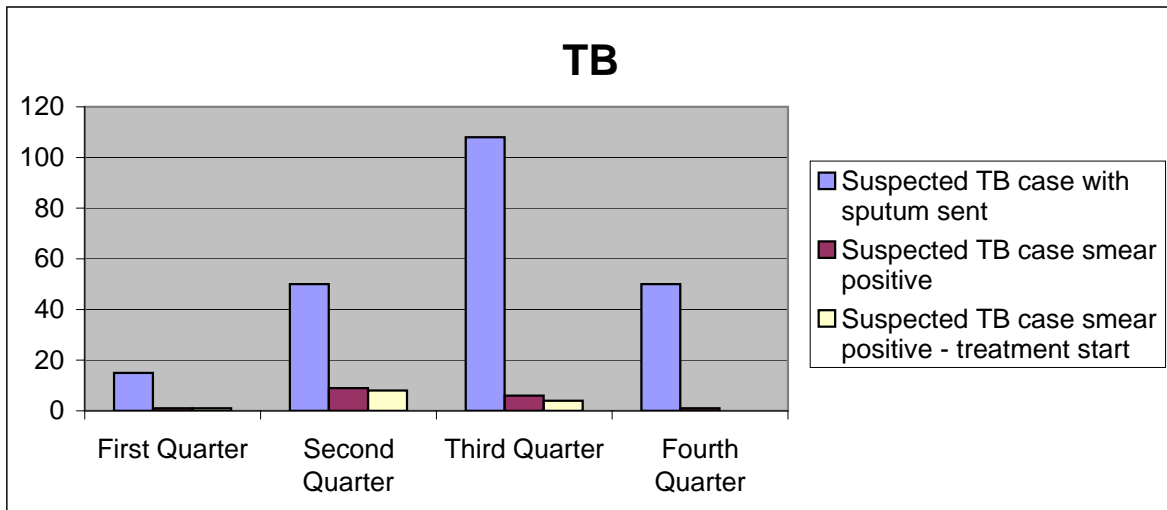


DEPARTMENT OF HEALTH

	First Quarter	Second Quarter	Third Quarter	Fourth Quarter
STI treated new episode	73	90	47	54
Male Urethritis Syndrome	13	12	4	5



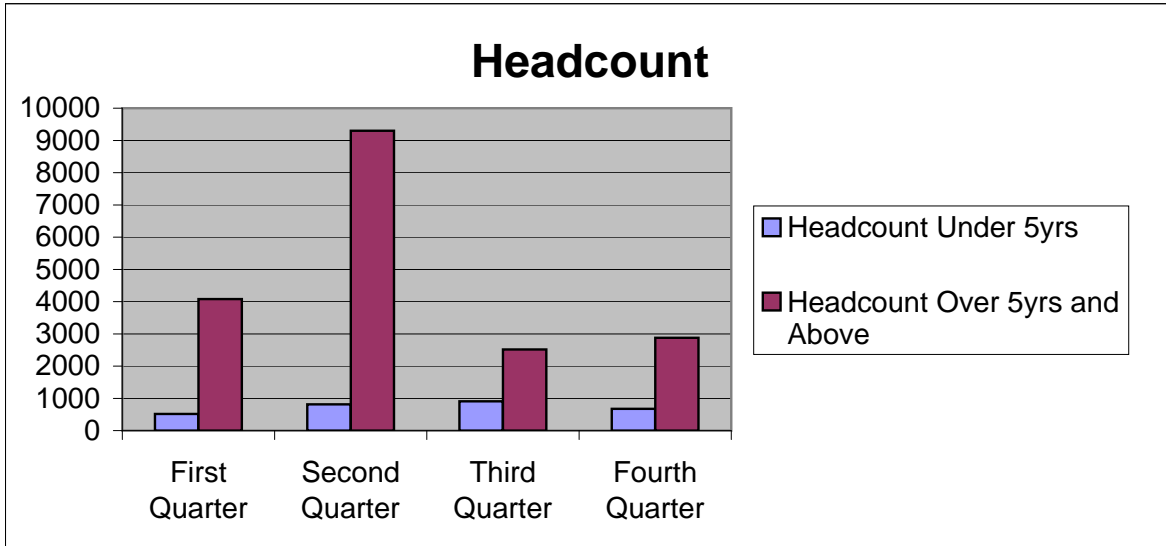
	First Quarter	Second Quarter	Third Quarter	Fourth Quarter
Suspected TB case with sputum sent	15	50	108	50
Suspected TB case smear positive	1	9	6	1
Suspected TB case smear positive - treatment start	1	8	4	0



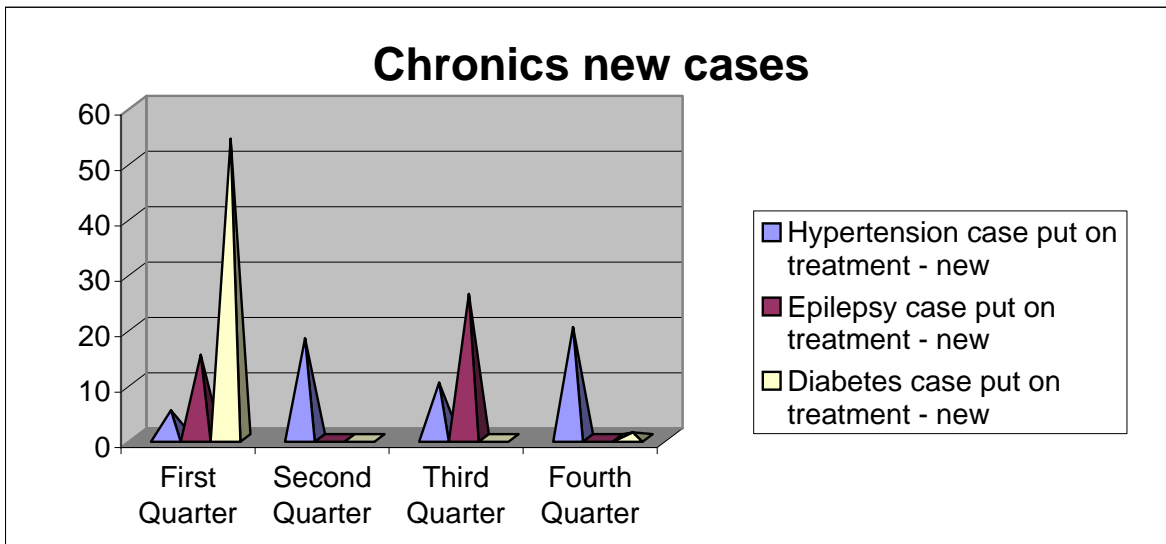
DEPARTMENT OF HEALTH

NTSHONGWENI

	First Quarter	Second Quarter	Third Quarter	Fourth Quarter
Headcount Under 5yrs	516	815	909	673
Headcount Over 5yrs and Above	4079	9300	2516	2879

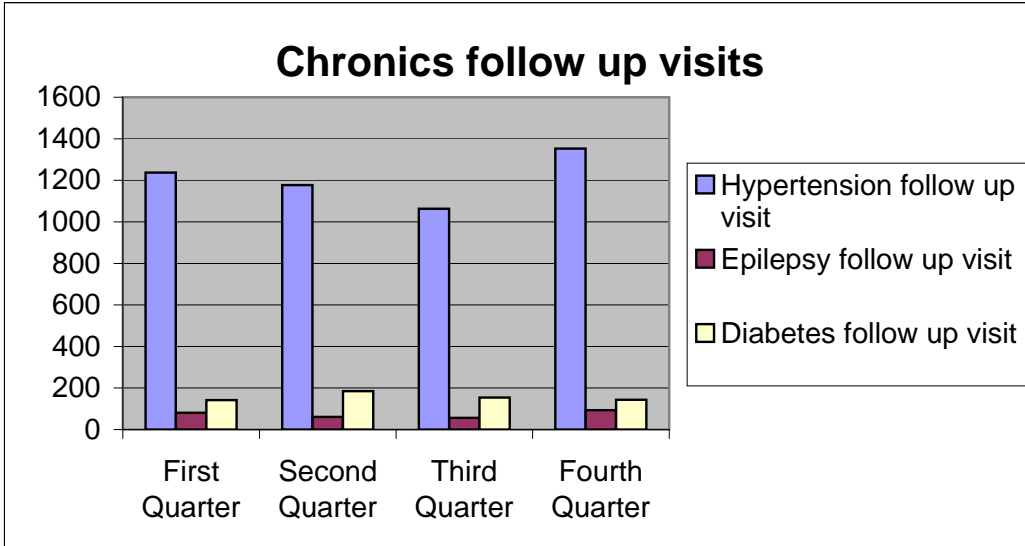


	First Quarter	Second Quarter	Third Quarter	Fourth Quarter
Hypertension case put on treatment - new	5	18	10	20
Epilepsy case put on treatment - new	15	0	26	0
Diabetes case put on treatment - new	54	0	0	1

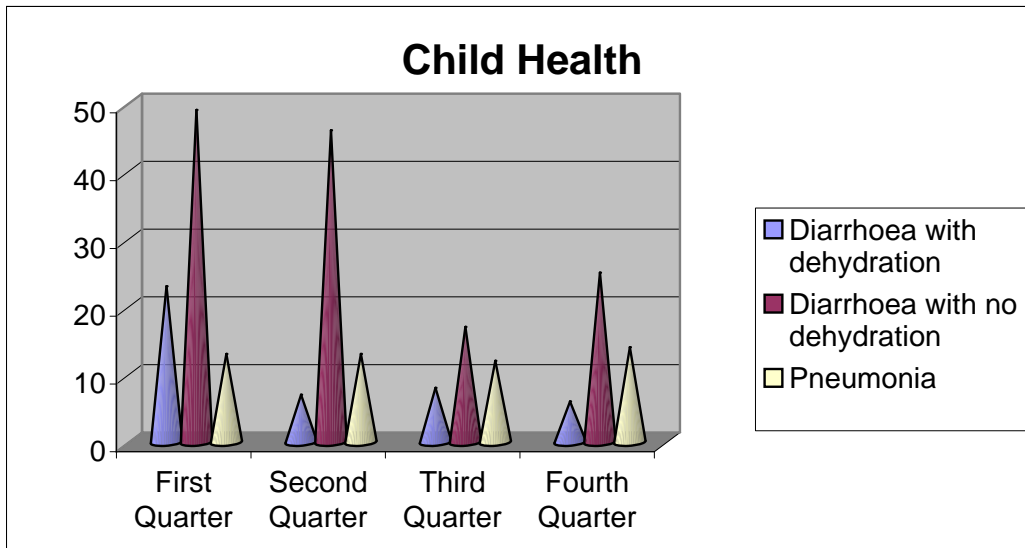


DEPARTMENT OF HEALTH

	First Quarter	Second Quarter	Third Quarter	Fourth Quarter
Hypertension follow up visit	1237	1177	1063	1353
Epilepsy follow up visit	81	61	56	93
Diabetes follow up visit	142	185	154	143

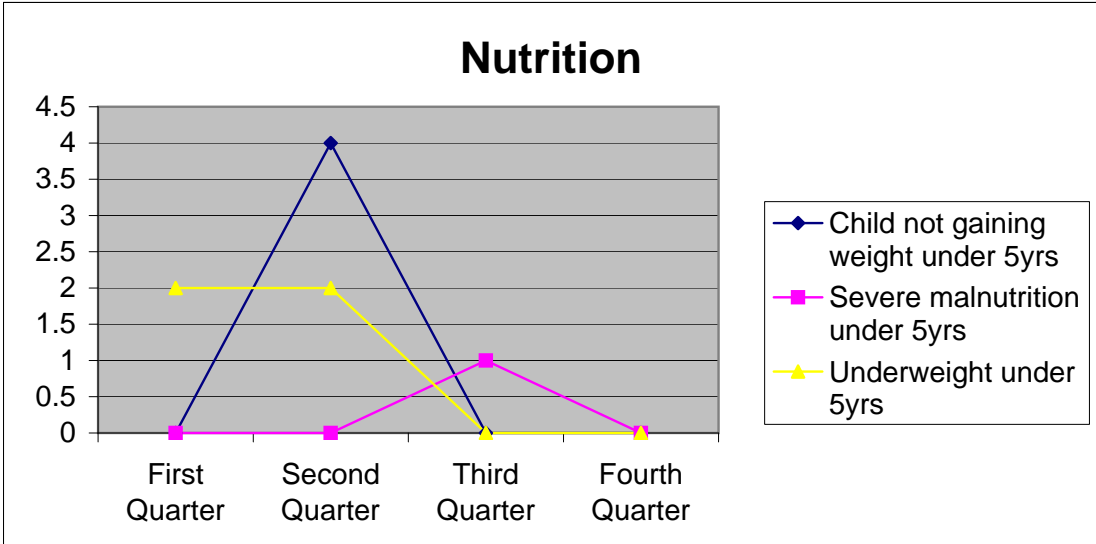


	First Quarter	Second Quarter	Third Quarter	Fourth Quarter
Diarrhoea with dehydration	23	7	8	6
Diarrhoea with no dehydration	49	46	17	25
Pneumonia	13	13	12	14

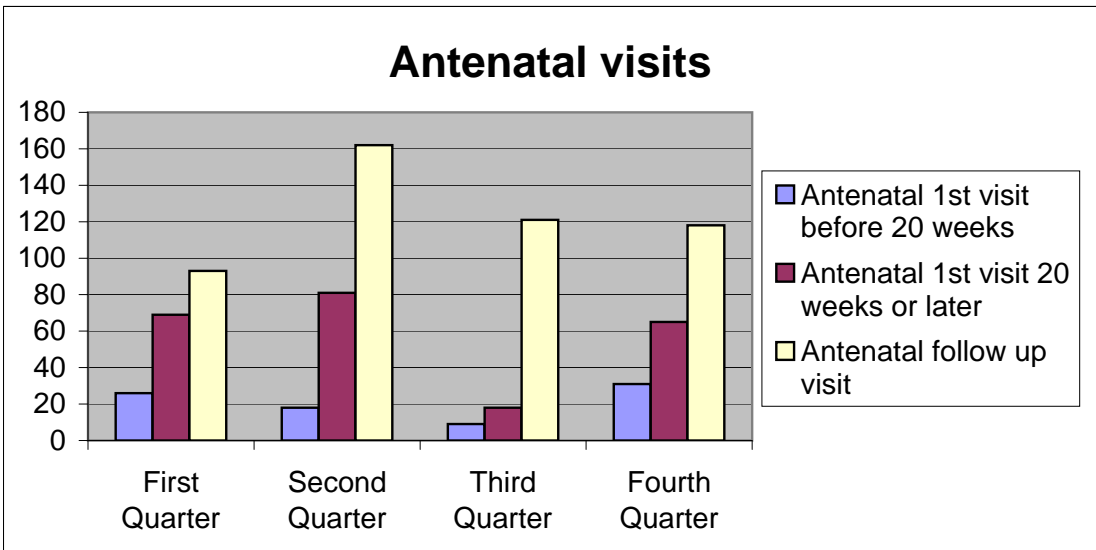


DEPARTMENT OF HEALTH

	First Quarter	Second Quarter	Third Quarter	Fourth Quarter
Child not gaining weight under 5yrs	0	4	0	0
Severe malnutrition under 5yrs	0	0	1	0
Underweight under 5yrs	2	2	0	0

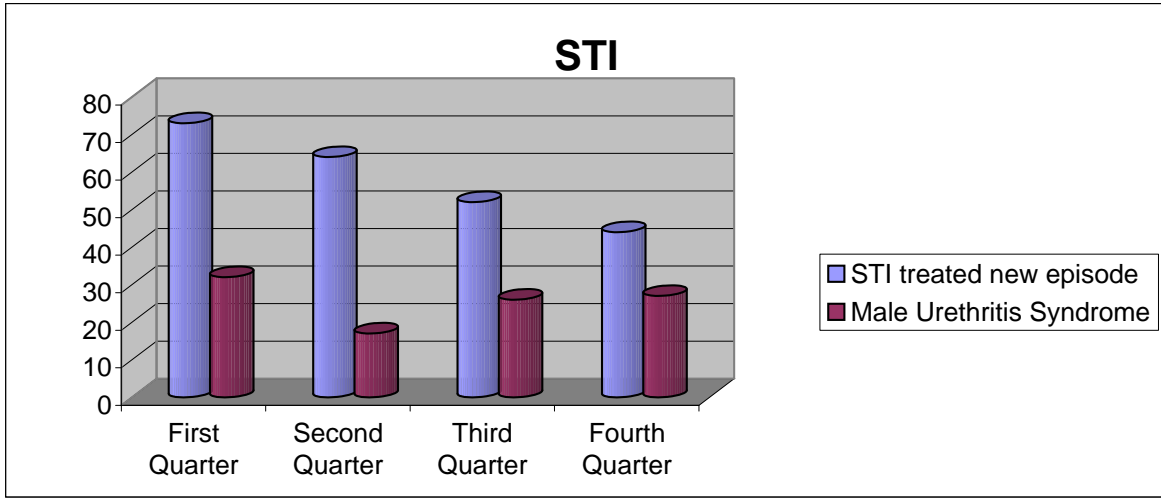


	First Quarter	Second Quarter	Third Quarter	Fourth Quarter
Antenatal 1st visit before 20 weeks	26	18	9	31
Antenatal 1st visit 20 weeks or later	69	81	18	65
Antenatal follow up visit	93	162	121	118

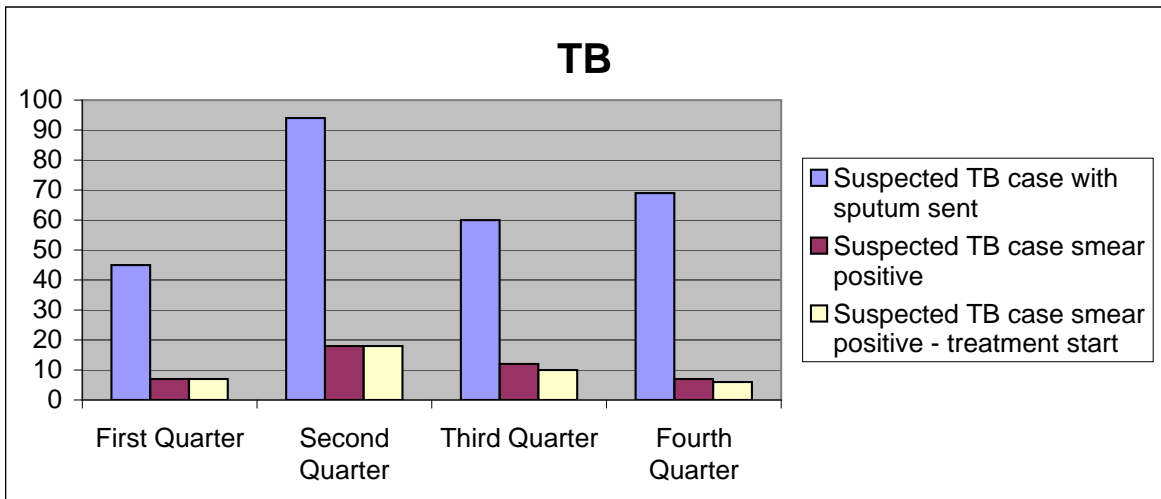


DEPARTMENT OF HEALTH

	First Quarter	Second Quarter	Third Quarter	Fourth Quarter
STI treated new episode	73	64	52	44
Male Urethritis Syndrome	32	17	26	27



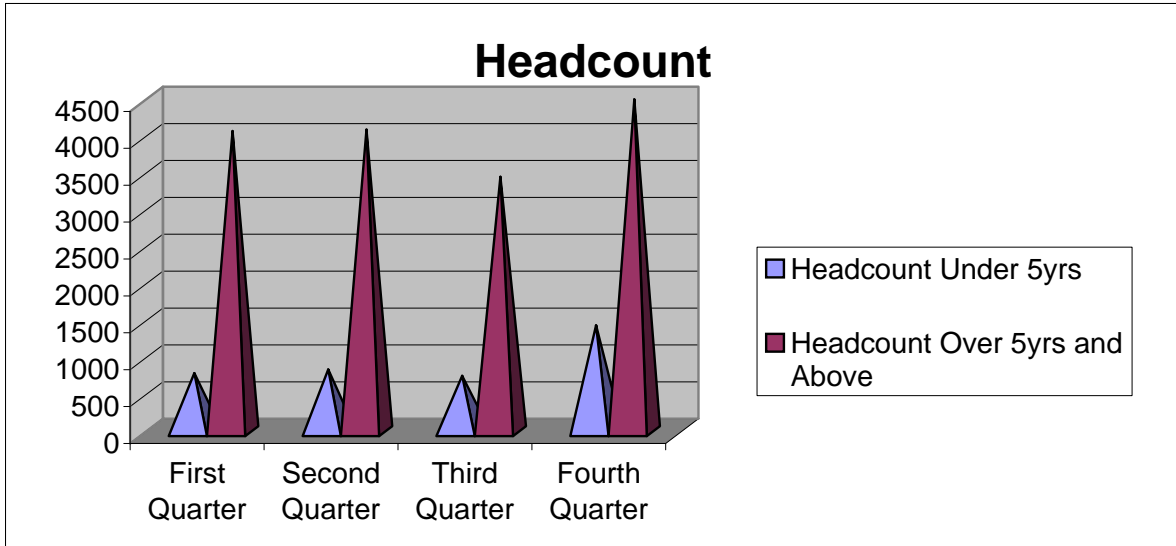
	First Quarter	Second Quarter	Third Quarter	Fourth Quarter
Suspected TB case with sputum sent	45	94	60	69
Suspected TB case smear positive	7	18	12	7
Suspected TB case smear positive - treatment start	7	18	10	6



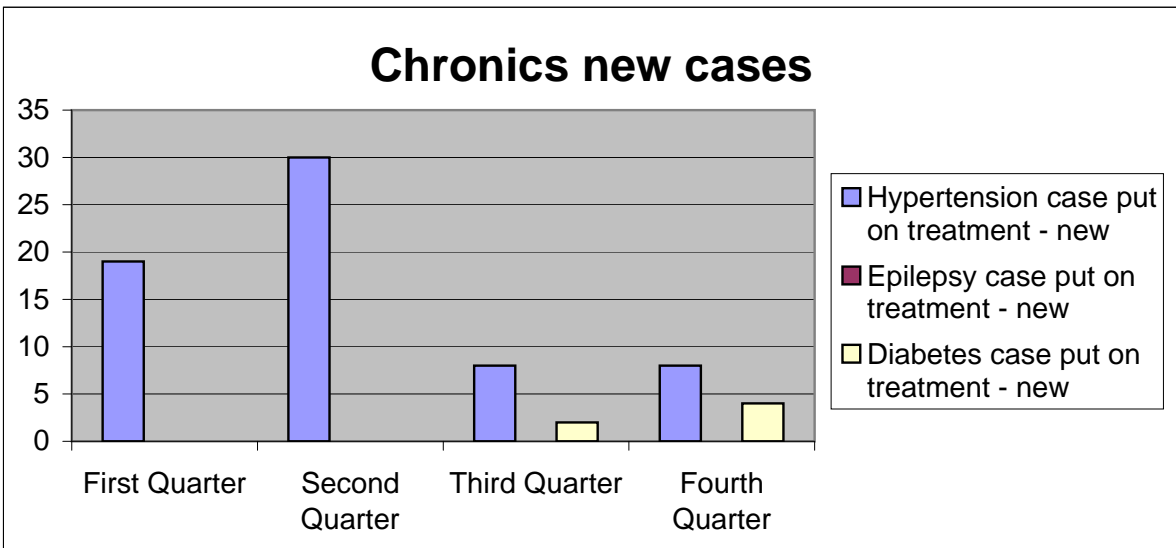
DEPARTMENT OF HEALTH

PEACEVILLE

	First Quarter	Second Quarter	Third Quarter	Fourth Quarter
Headcount Under 5yrs	786	836	750	1435
Headcount Over 5yrs and Above	4067	4087	3446	4497

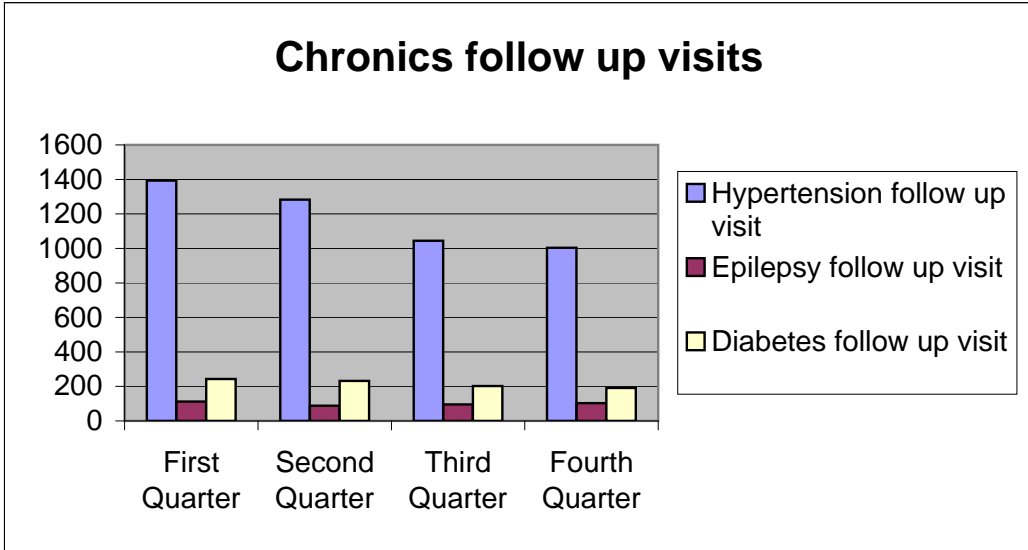


	First Quarter	Second Quarter	Third Quarter	Fourth Quarter
Hypertension case put on treatment - new	19	30	8	8
Epilepsy case put on treatment - new	0	0	0	0
Diabetes case put on treatment - new	0	0	2	4

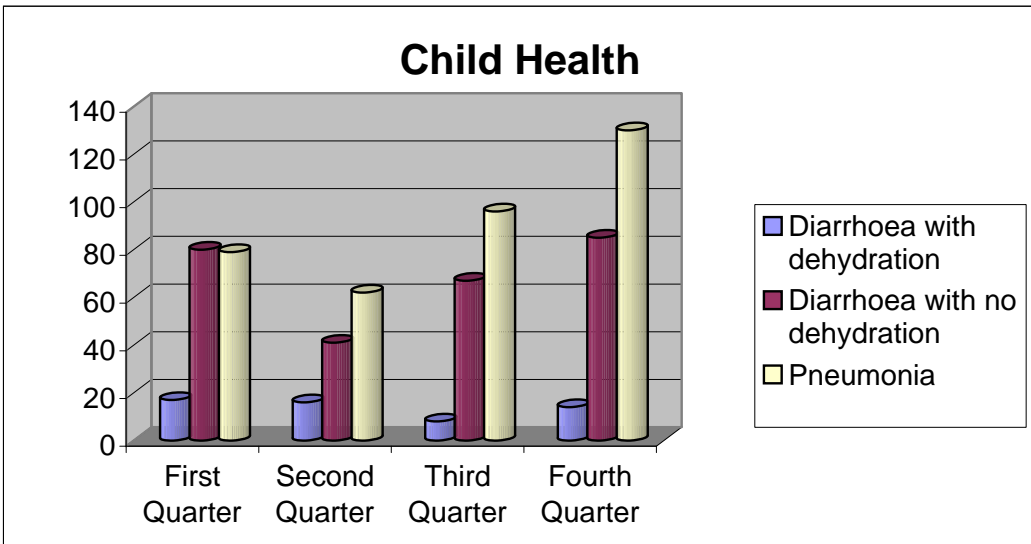


DEPARTMENT OF HEALTH

	First Quarter	Second Quarter	Third Quarter	Fourth Quarter
Hypertension follow up visit	1393	1283	1044	1004
Epilepsy follow up visit	112	88	96	103
Diabetes follow up visit	243	232	202	191

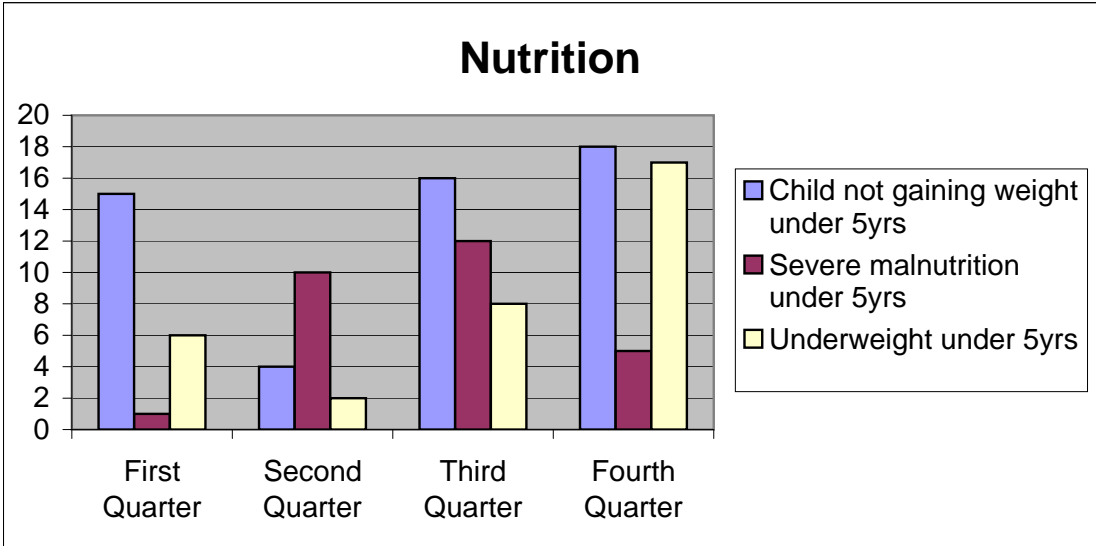


	First Quarter	Second Quarter	Third Quarter	Fourth Quarter
Diarrhoea with dehydration	17	16	8	14
Diarrhoea with no dehydration	80	41	67	85
Pneumonia	79	62	96	130

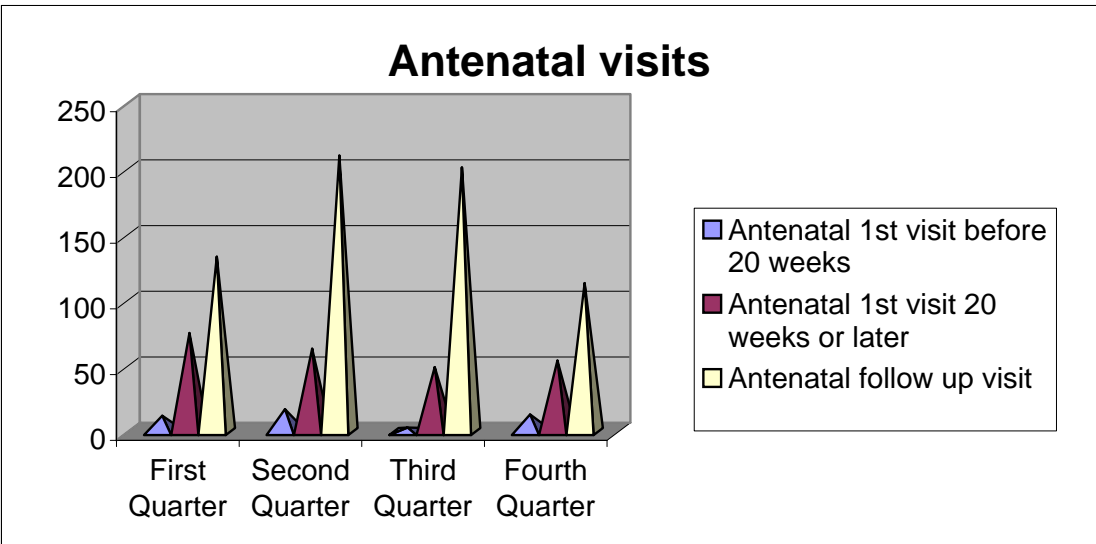


DEPARTMENT OF HEALTH

	First Quarter	Second Quarter	Third Quarter	Fourth Quarter
Child not gaining weight under 5yrs	15	4	16	18
Severe malnutrition under 5yrs	1	10	12	5
Underweight under 5yrs	6	2	8	17

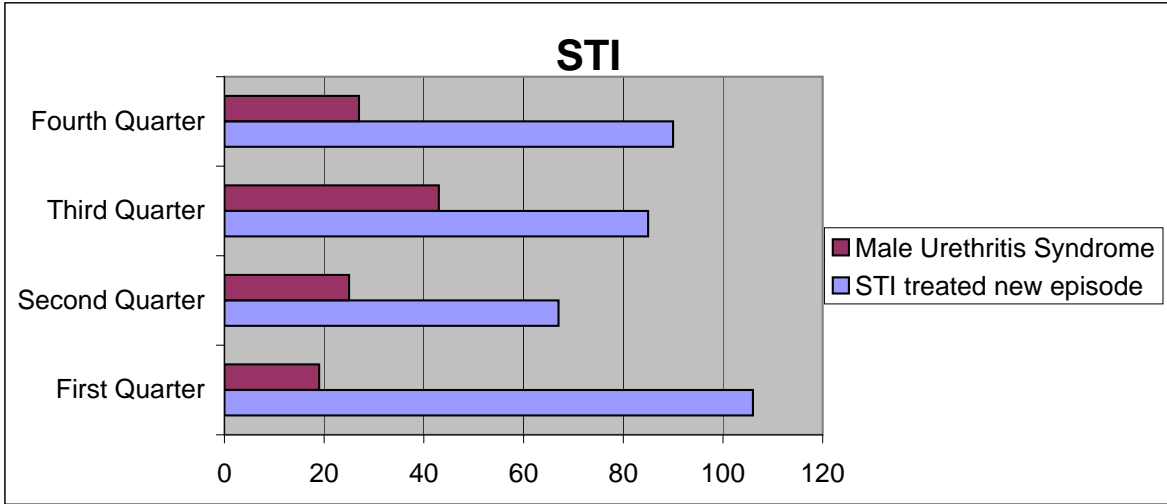


	First Quarter	Second Quarter	Third Quarter	Fourth Quarter
Antenatal 1st visit before 20 weeks	12	17	3	13
Antenatal 1st visit 20 weeks or later	75	63	49	54
Antenatal follow up visit	133	210	201	113

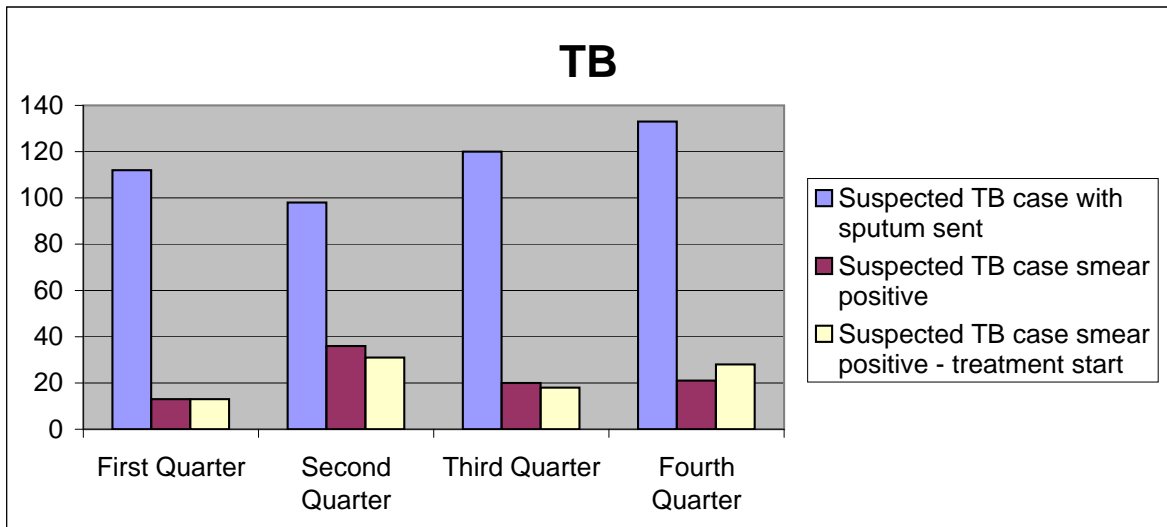


DEPARTMENT OF HEALTH

	First Quarter	Second Quarter	Third Quarter	Fourth Quarter
STI treated new episode	106	67	85	90
Male Urethritis Syndrome	19	25	43	27



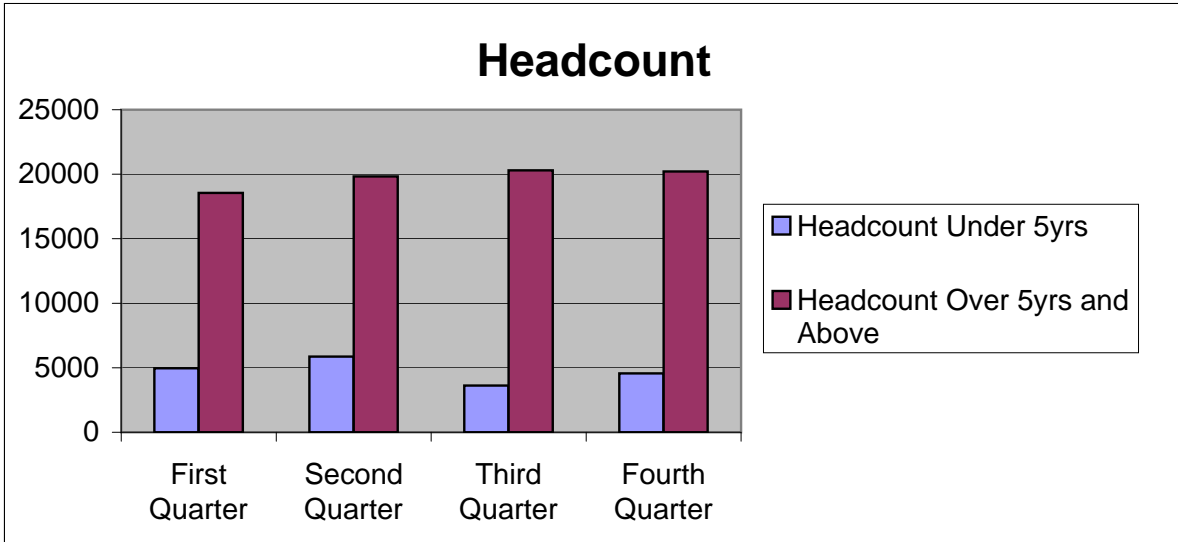
	First Quarter	Second Quarter	Third Quarter	Fourth Quarter
Suspected TB case with sputum sent	112	98	120	133
Suspected TB case smear positive	13	36	20	21
Suspected TB case smear positive - treatment start	13	31	18	28



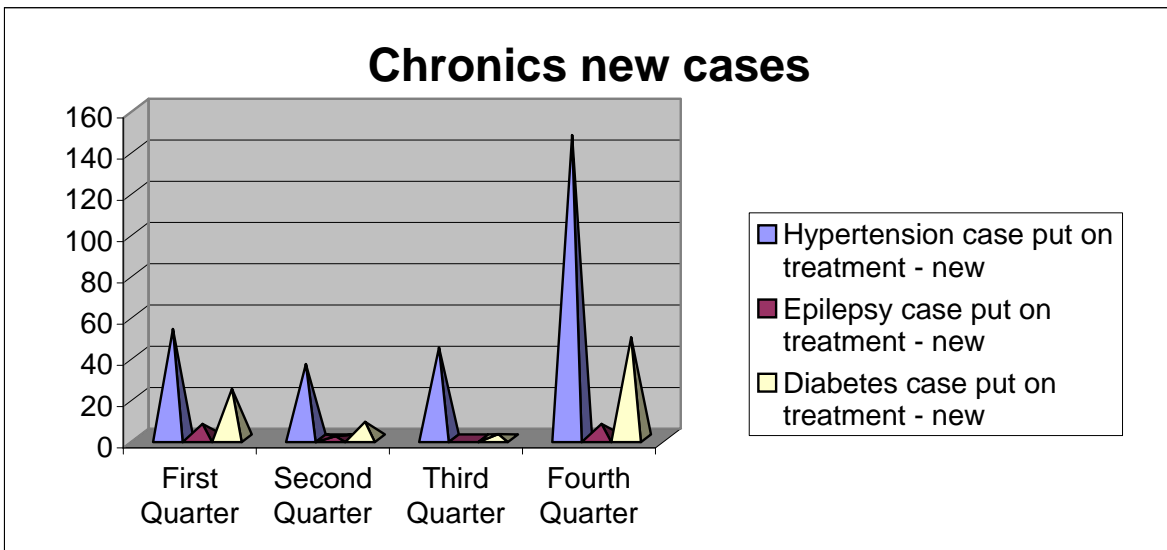
DEPARTMENT OF HEALTH

HLENGISIZWE

	First Quarter	Second Quarter	Third Quarter	Fourth Quarter
Headcount Under 5yrs	4955	5868	3616	4562
Headcount Over 5yrs and Above	18551	19826	20295	20209

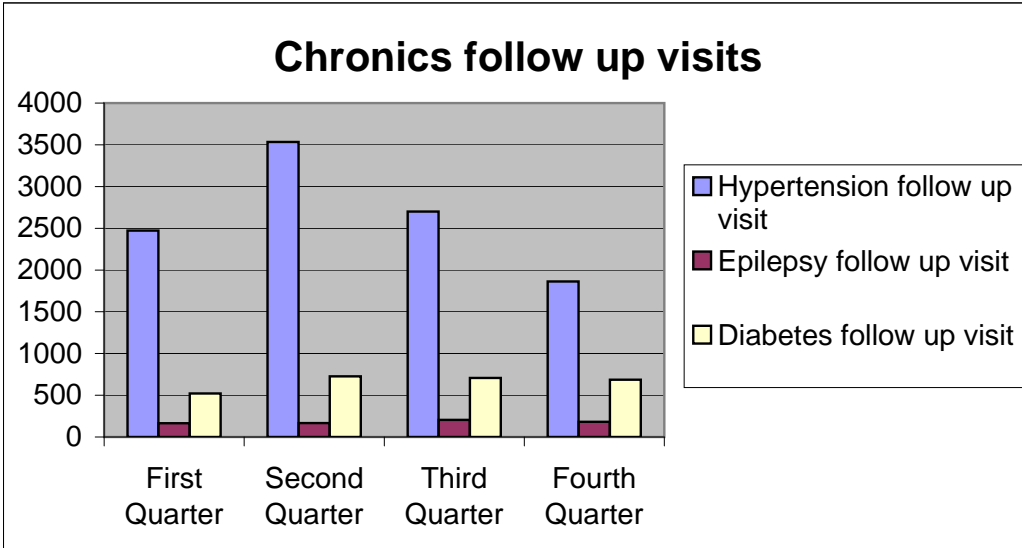


	First Quarter	Second Quarter	Third Quarter	Fourth Quarter
Hypertension case put on treatment - new	53	36	44	147
Epilepsy case put on treatment - new	7	1	0	7
Diabetes case put on treatment - new	24	8	2	49

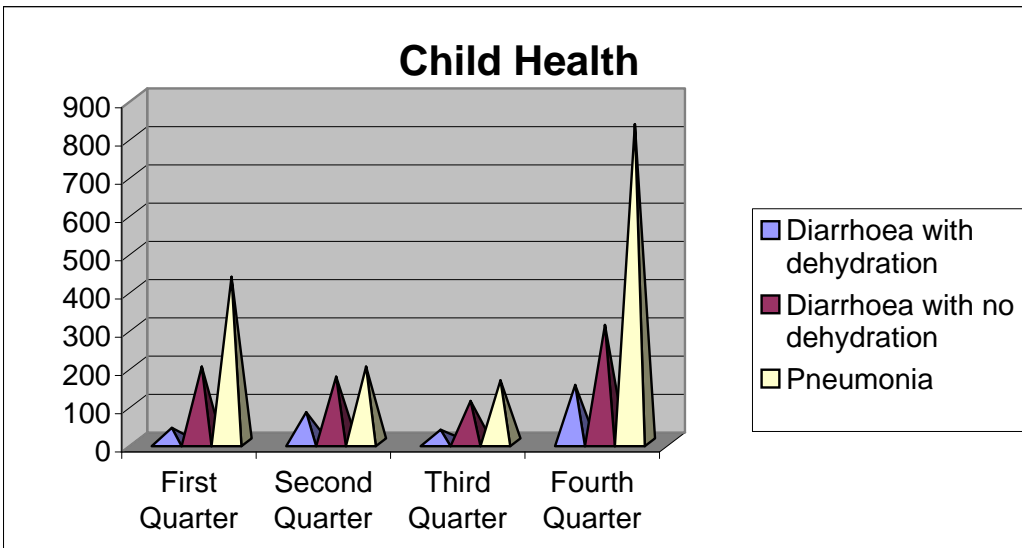


DEPARTMENT OF HEALTH

	First Quarter	Second Quarter	Third Quarter	Fourth Quarter
Hypertension follow up visit	2472	3534	2701	1863
Epilepsy follow up visit	165	167	206	182
Diabetes follow up visit	521	726	707	687

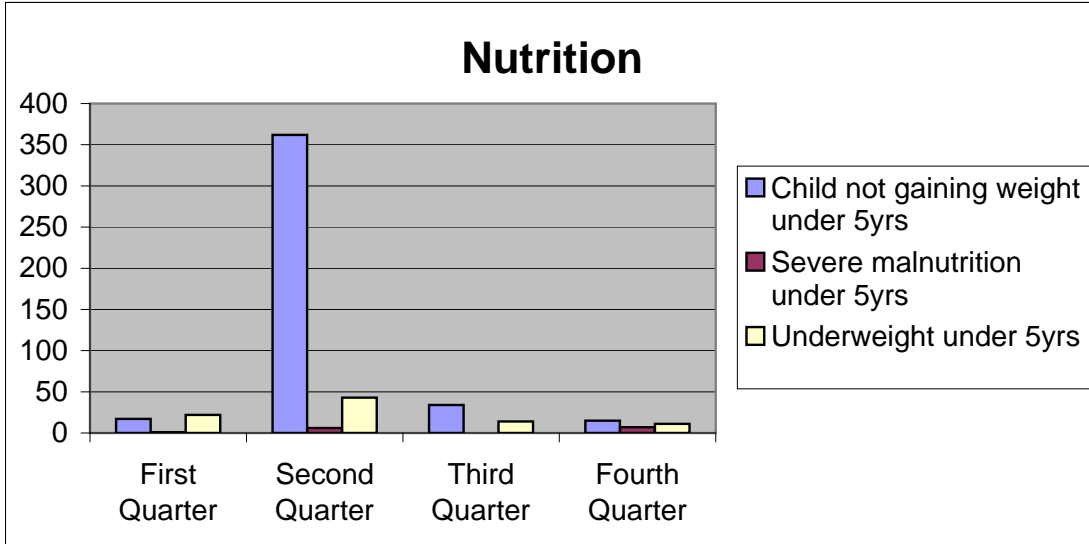


	First Quarter	Second Quarter	Third Quarter	Fourth Quarter
Diarrhoea with dehydration	38	79	33	150
Diarrhoea with no dehydration	198	172	108	307
Pneumonia	433	198	162	832

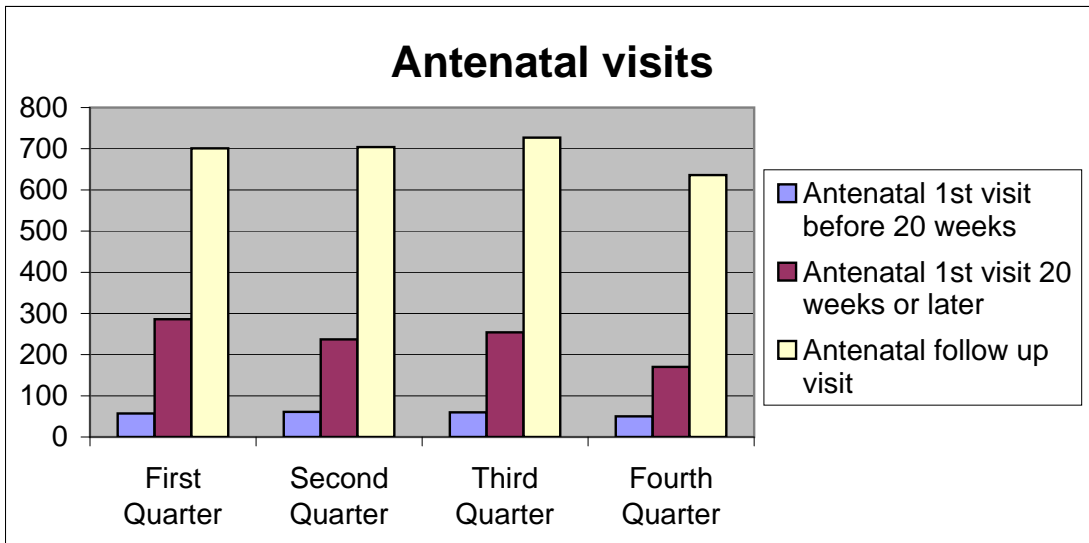


DEPARTMENT OF HEALTH

	First Quarter	Second Quarter	Third Quarter	Fourth Quarter
Child not gaining weight under 5yrs	17	362	34	15
Severe malnutrition under 5yrs	1	6	0	7
Underweight under 5yrs	22	43	14	11

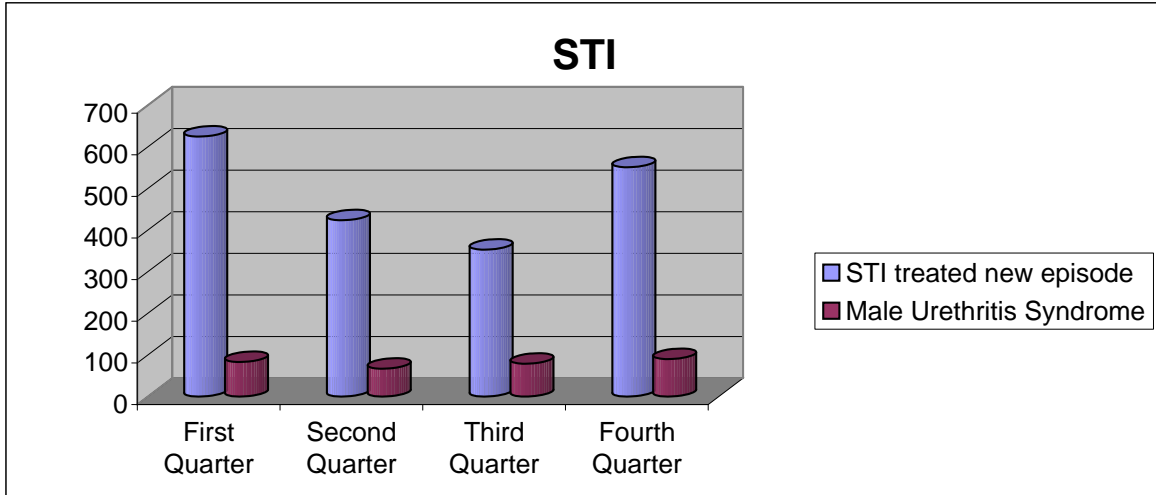


	First Quarter	Second Quarter	Third Quarter	Fourth Quarter
Antenatal 1st visit before 20 weeks	57	61	60	50
Antenatal 1st visit 20 weeks or later	286	237	254	170
Antenatal follow up visit	701	704	727	636

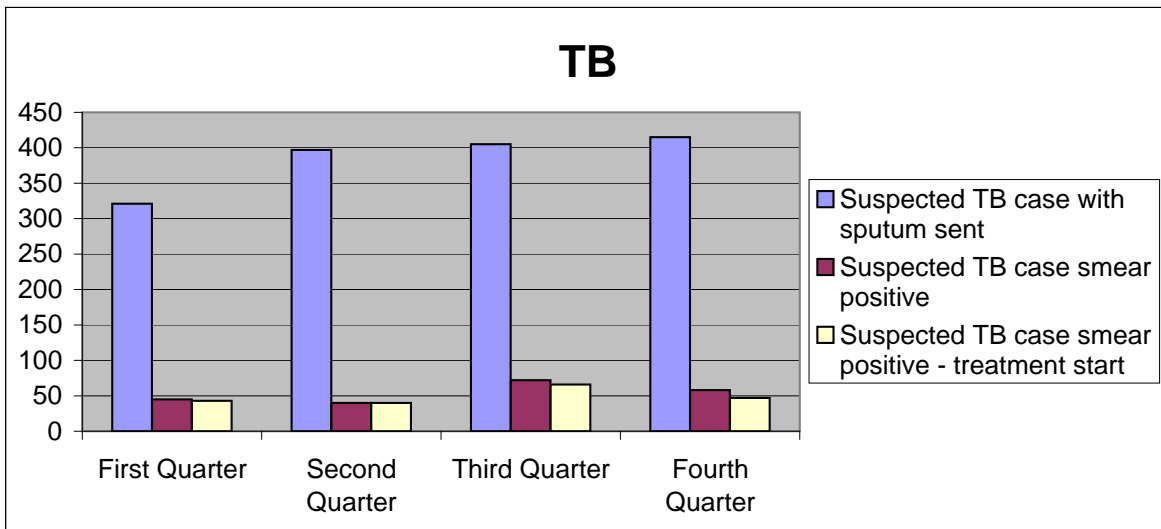


DEPARTMENT OF HEALTH

	First Quarter	Second Quarter	Third Quarter	Fourth Quarter
STI treated new episode	625	424	353	551
Male Urethritis Syndrome	83	67	79	90

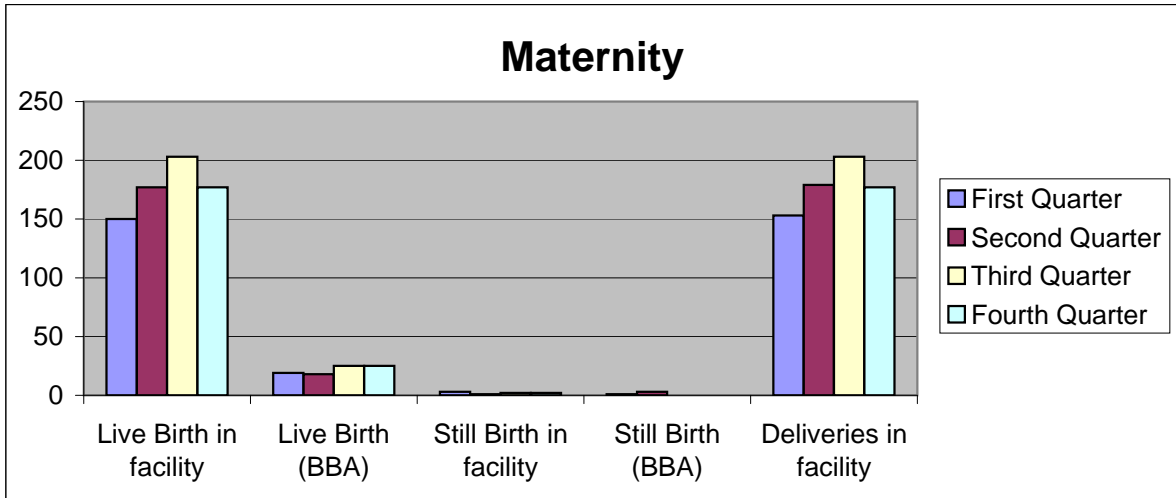


	First Quarter	Second Quarter	Third Quarter	Fourth Quarter
Suspected TB case with sputum sent	321	397	405	415
Suspected TB case smear positive	45	40	72	58
Suspected TB case smear positive - treatment start	43	40	66	47



DEPARTMENT OF HEALTH

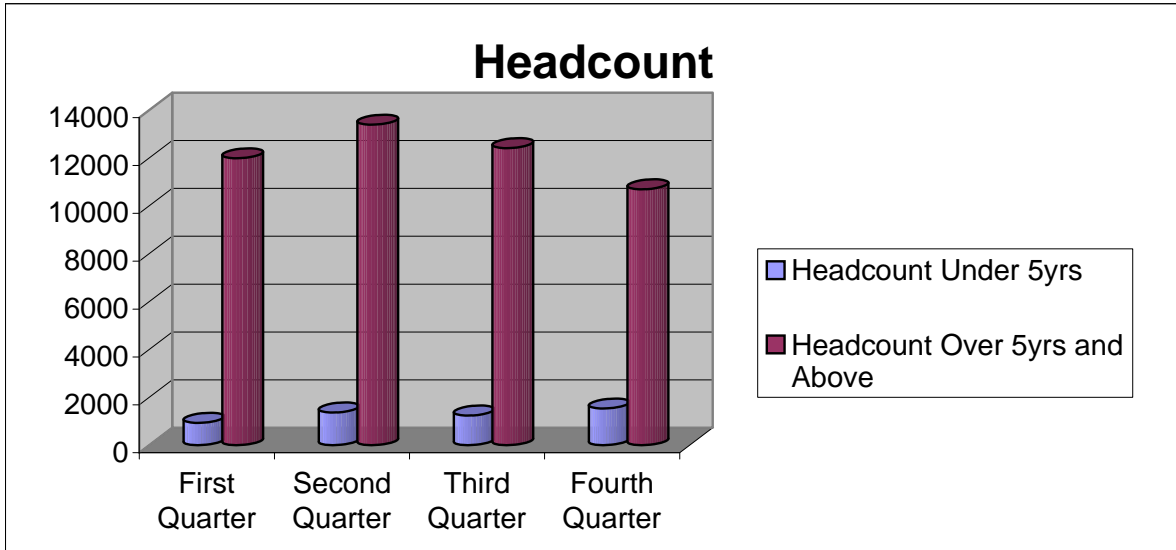
	First Quarter	Second Quarter	Third Quarter	Fourth Quarter
Live Birth in facility	150	177	203	177
Live Birth (BBA)	19	18	25	25
Still Birth in facility	3	1	2	2
Still Birth (BBA)	1	3	0	0
Deliveries in facility	153	179	203	177



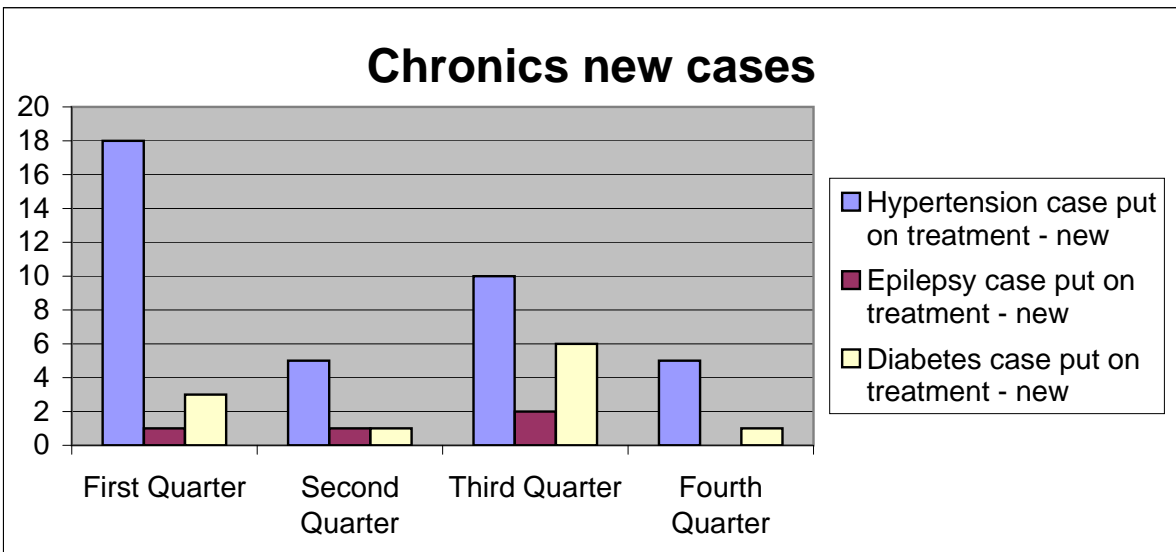
DEPARTMENT OF HEALTH

HALLEY STOTT

	First Quarter	Second Quarter	Third Quarter	Fourth Quarter
Headcount Under 5yrs	934	1367	1240	1530
Headcount Over 5yrs and Above	11988	13394	12413	10694

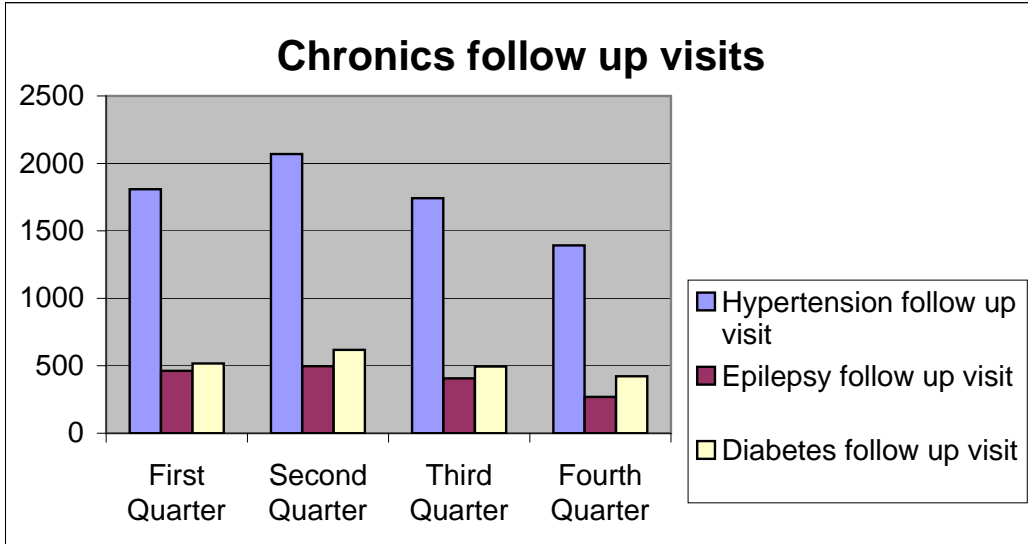


	First Quarter	Second Quarter	Third Quarter	Fourth Quarter
Hypertension case put on treatment - new	18	5	10	5
Epilepsy case put on treatment - new	1	1	2	0
Diabetes case put on treatment - new	3	1	6	1

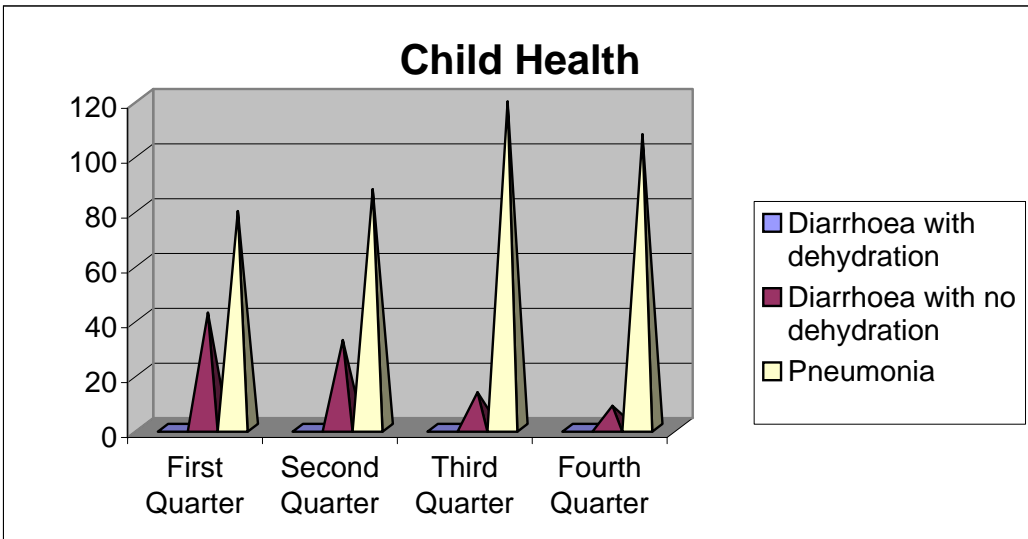


DEPARTMENT OF HEALTH

	First Quarter	Second Quarter	Third Quarter	Fourth Quarter
Hypertension follow up visit	1808	2069	1742	1392
Epilepsy follow up visit	463	497	407	269
Diabetes follow up visit	517	618	494	422

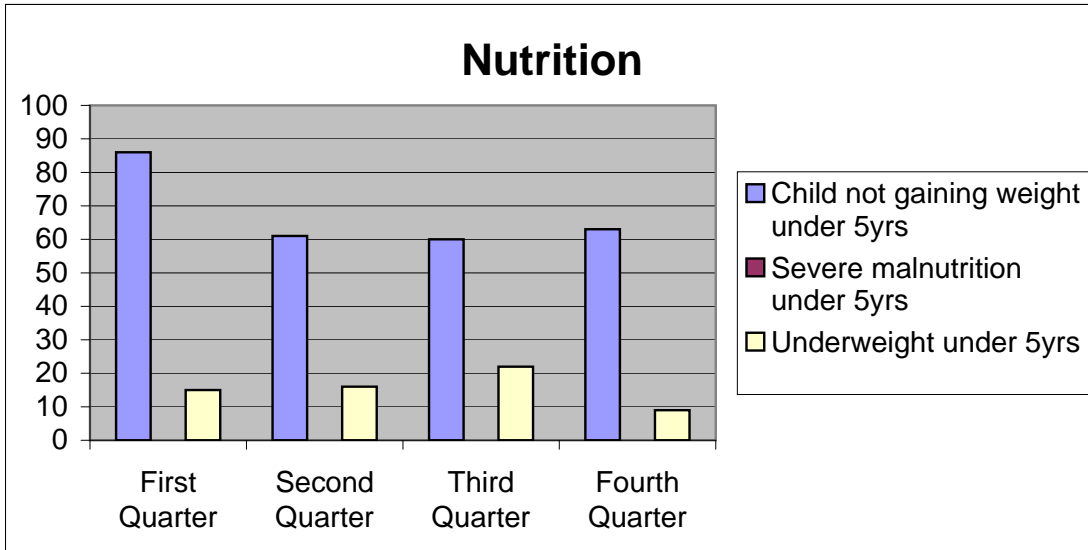


	First Quarter	Second Quarter	Third Quarter	Fourth Quarter
Diarrhoea with dehydration	0	0	0	0
Diarrhoea with no dehydration	42	32	13	8
Pneumonia	79	87	119	107

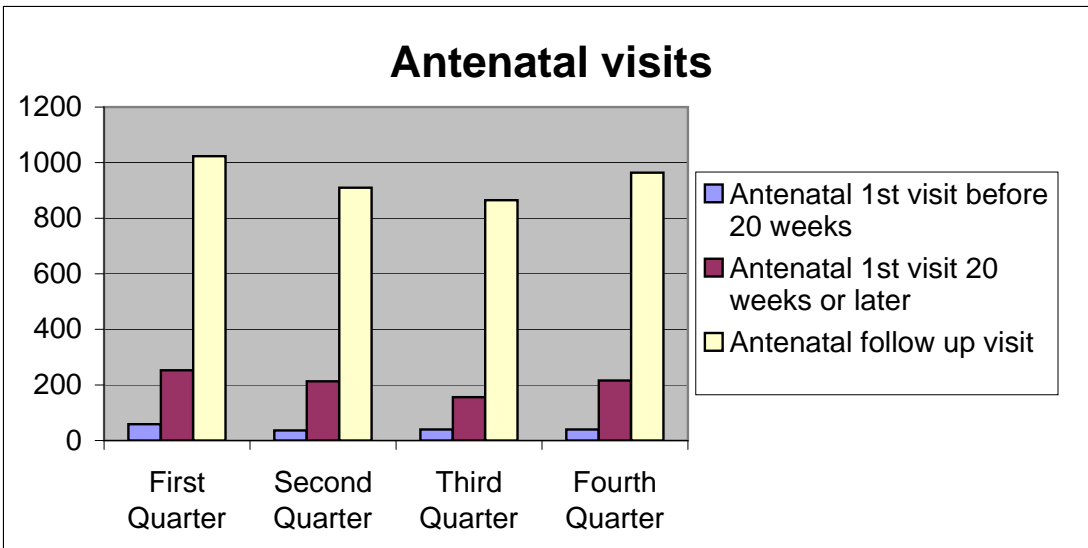


DEPARTMENT OF HEALTH

	First Quarter	Second Quarter	Third Quarter	Fourth Quarter
Child not gaining weight under 5yrs	86	61	60	63
Severe malnutrition under 5yrs	0	0	0	0
Underweight under 5yrs	15	16	22	9

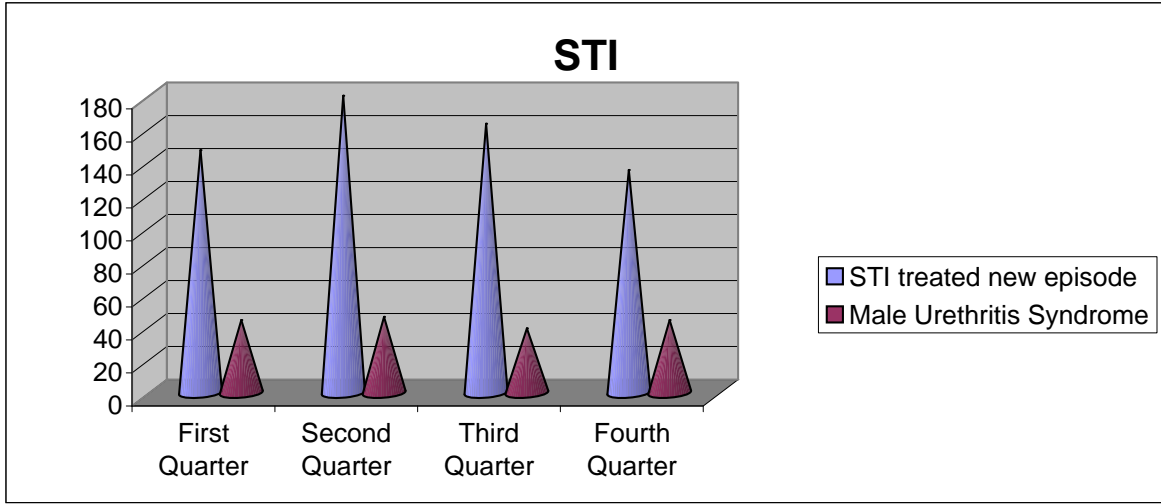


	First Quarter	Second Quarter	Third Quarter	Fourth Quarter
Antenatal 1st visit before 20 weeks	59	36	40	40
Antenatal 1st visit 20 weeks or later	253	213	156	216
Antenatal follow up visit	1023	910	865	964

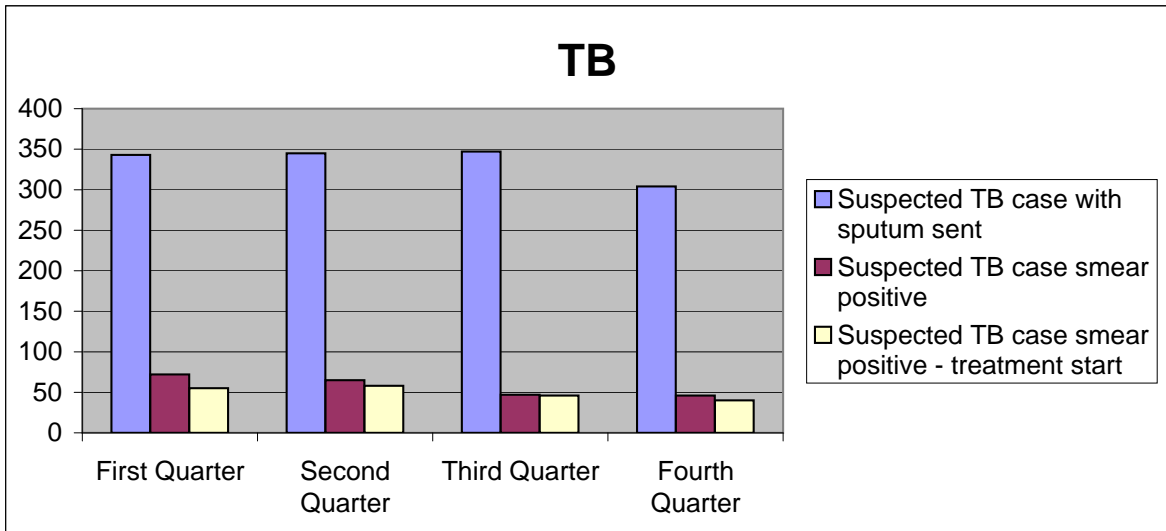


DEPARTMENT OF HEALTH

	First Quarter	Second Quarter	Third Quarter	Fourth Quarter
STI treated new episode	147	180	163	135
Male Urethritis Syndrome	44	46	39	44

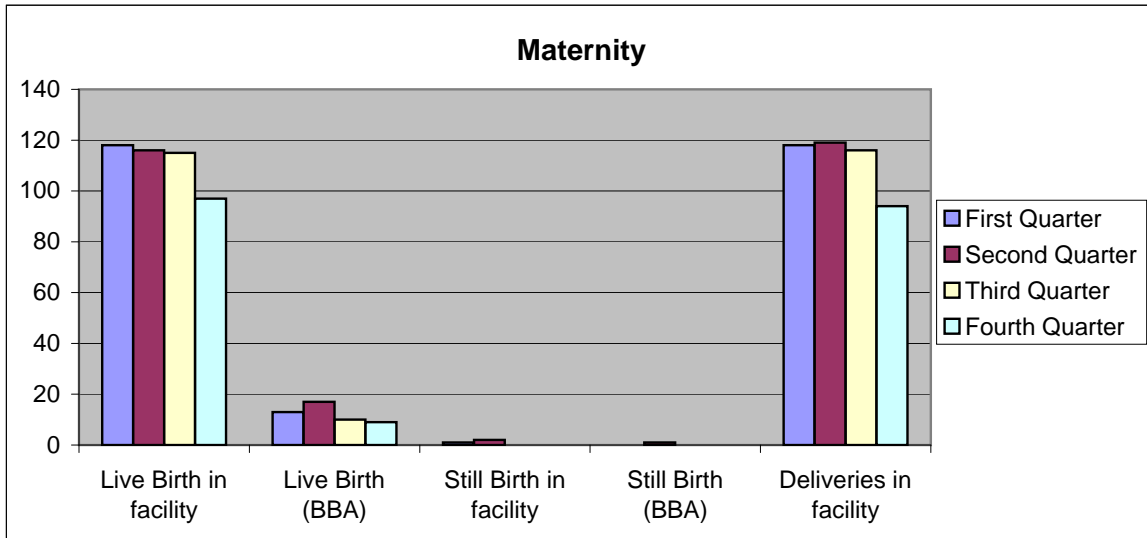


	First Quarter	Second Quarter	Third Quarter	Fourth Quarter
Suspected TB case with sputum sent	343	345	347	304
Suspected TB case smear positive	72	65	47	46
Suspected TB case smear positive - treatment start	55	58	46	40



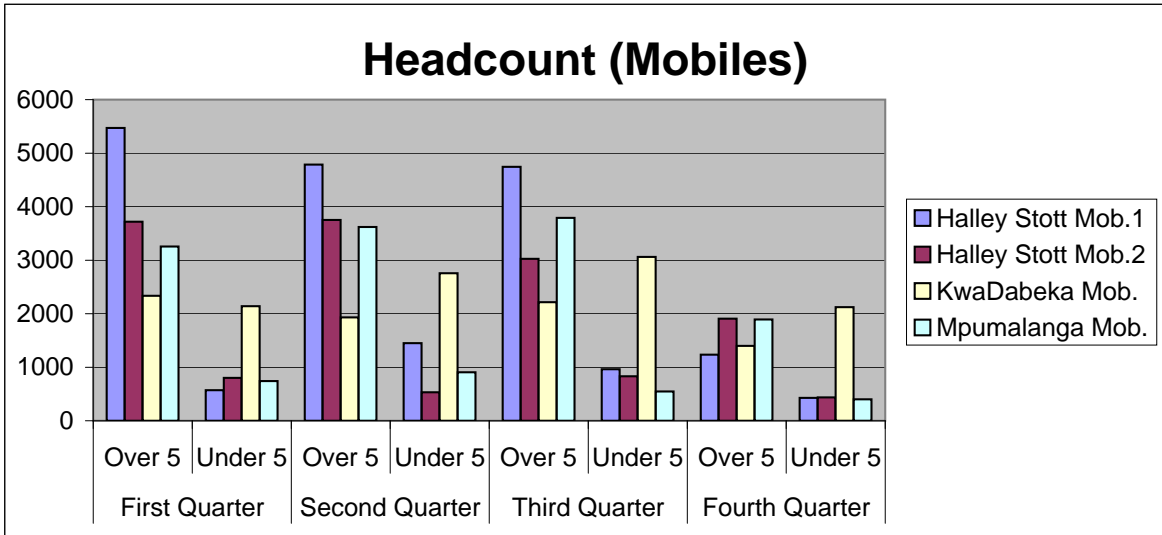
DEPARTMENT OF HEALTH

	First Quarter	Second Quarter	Third Quarter	Fourth Quarter
Live Birth in facility	118	116	115	97
Live Birth (BBA)	13	17	10	9
Still Birth in facility	1	2	0	0
Still Birth (BBA)	0	1	0	0
Deliveries in facility	118	119	116	94



HEADCOUNT MOBILES (1st - 4th QUARTER)

	First Quarter		Second Quarter		Third Quarter		Fourth Quarter	
	Over 5	Under 5	Over 5	Under 5	Over 5	Under 5	Over 5	Under 5
Halley Stott Mob.1	5472	570	4785	1450	4744	964	1234	428
Halley Stott Mob.2	3718	801	3753	532	3025	830	1908	436
KwaDabeka Mob.	2334	2141	1931	2756	2215	3062	1400	2123
Mpumalanga Mob.	3256	742	3621	906	3792	548	1893	400



DEPARTMENT OF HEALTH

IMMUNISATION INDICATORS (JAN - DEC 2006)

SortOrder	IndShort	IndType	Jan-06	Feb-06	Mar-06	Apr-06	May-06	Jun-06	Jul-06	Aug-06	Sep-06	Oct-06	Nov-06	Dec-06
CLERMONT	Imm dropout 1-3	%	-16.4	-36.8	-5.1	-65.4	22.4	38.5	16.4	-38.9	-6.4	36.8	-1.8	16.7
	Imm dropout 3-measl	%	23.4	53.8	2.4	32.6	37.8	20.0	35.3	37.3	50.0	-86.1	64.3	-7.5
	Imm dropout meas 1-2	%	26.5	4.2	45.0	58.6	67.9	71.9	18.2	55.3	36.0	65.7	-40.0	16.3
FREDVILLE	Imm dropout 1-3	%	48.6	33.3	-34.6	-16.7	8.8	-5.0	-29.6	-5.9	0.0	39.0	33.3	-33.3
	Imm dropout 3-measl	%	-31.6	-33.3	40.0	21.4	-9.7	4.8	51.4	-22.2	-57.9	-20.0	-5.0	35.7
	Imm dropout meas 1-2	%	16.0	-20.8	9.5	0.0	32.4	5.0	-23.5	13.6	20.0	23.3	-42.9	-16.7
HALLEY STOTT	Imm dropout 1-3	%	12.5	27.3	-34.6	-67.4	40.0	37.9	45.3	-2.8	6.2	3.7	3.6	3.6
	Imm dropout 3-measl	%	-17.1	-31.3	-5.7	59.7	-51.5	-41.5	-14.6	62.2	26.2	5.1	13.2	3.7
	Imm dropout meas 1-2	%	31.7	0.0	10.8	-12.9	18.0	22.4	-23.4	-78.6	24.4	33.8	23.9	30.8
HLENGISIZWE	Imm dropout 1-3	%	27.3	37.1	28.0	2.9	8.7	-13.9	-9.2	20.2	-17.8	14.5	16.3	-11.3
	Imm dropout 3-measl	%	-6.9	-17.9	3.5	16.4	8.4	0.0	10.5	24.1	53.8	-6.2	39.8	36.1
	Imm dropout meas 1-2	%	10.4	31.8	8.5	12.5	36.8	30.0	10.6	-18.3	49.0	46.4	1.6	26.1
KWANDENGEZI	Imm dropout 1-3	%	-68.4	-61.5	-35.8	0.6	10.8	7.5	13.3	10.6	11.4	-14.3	-40.2	-14.8
	Imm dropout 3-measl	%	85.2	84.2	61.5	62.9	56.0	56.1	48.7	45.6	57.1	-4.2	37.8	58.1
	Imm dropout meas 1-2	%	-50.0	-46.3	22.9	-23.7	-21.0	-15.4	10.0	-3.3	-16.7	16.0	55.1	-15.4
MOLWEN	Imm dropout 1-3	%	-18.8	76.3	53.3	21.6	12.1	42.9	34.8	36.0	11.5	11.1	51.7	-5.3
	Imm dropout 3-measl	%	52.6	22.2	57.1	80.0	51.7	6.3	-6.7	50.0	34.8	-6.3	-64.3	25.0
	Imm dropout meas 1-2	%	33.3	28.6	33.3	-62.5	35.7	20.0	-68.8	-12.5	60.0	-5.9	56.5	13.3

DEPARTMENT OF HEALTH

MPUMALANGA	Imm dropout 1-3	%	16.3	-25.7	-4.7	-2.4	15.5	41.5	-11.1	20.0	10.5	-7.5	11.1	11.4
	Imm dropout 3-meas1	%	-29.3	18.2	13.3	25.6	8.2	-35.5	6.0	-66.7	8.8	-2.3	-2.1	15.4
	Imm dropout meas 1-2	%	5.7	-25.0	-12.8	-12.5	2.2	47.6	46.8	72.5	-38.7	-20.5	20.4	6.1
MSUNDUZI	Imm dropout 1-3	%	38.2	30.8	25.0	3.8	32.1	14.9	11.1	-34.5	-50.0	7.1	-145.0	22.7
	Imm dropout 3-meas1	%	-26.5	16.7	-33.3	48.0	-16.7	17.5	12.5	35.9	17.6	-15.4	42.9	14.7
	Imm dropout meas 1-2	%	2.3	-100.0	15.0	23.1	42.9	9.1	14.3	-8.0	26.2	2.2	10.7	10.3
NGCOLOSI	Imm dropout 1-3	%	14.3	-45.5	31.8	56.5	29.6	-72.7	-66.7	-21.1	-7.1	6.3	-7.1	0.0
	Imm dropout 3-meas1	%	44.4	0.0	-60.0	20.0	73.7	36.8	32.0	26.1	13.3	6.7	6.7	36.0
	Imm dropout meas 1-2	%	-10.0	12.5	37.5	-62.5	-180.0	50.0	17.6	35.3	-38.5	-14.3	21.4	-18.8
NTSHONGWENI	Imm dropout 1-3	%	-54.5	-37.5	-53.8	-16.7	28.6	-50.0	50.0	50.0	55.0	26.9	66.7	91.6
	Imm dropout 3-meas1	%	29.4	27.3	25.0	-14.3	-10.0	68.3	-50.0	10.0	-5.6	15.8	55.0	50.0
	Imm dropout meas 1-2	%	33.3	37.5	66.7	12.5	-9.1	10.0	33.3	-11.1	-5.3	18.8	50.0	20.0
PEACEVILLE	Imm dropout 1-3	%	-92.9	44.4	-75.0	31.8	27.3	-6.3	71.4	-18.8	-25.0	11.8	42.9	19.2
	Imm dropout 3-meas1	%	77.8	20.0	71.4	26.7	-100.0	47.1	0.0	47.4	36.0	20.0	5.0	38.1
	Imm dropout meas 1-2	%	-66.7	-275.0	-83.3	27.3	6.3	-88.9	25.0	-10.0	6.3	83.3	47.4	7.7