



# KWADABEKA CHC

1<sup>st</sup> – 4<sup>th</sup> Quarter (Statistics  
2008)

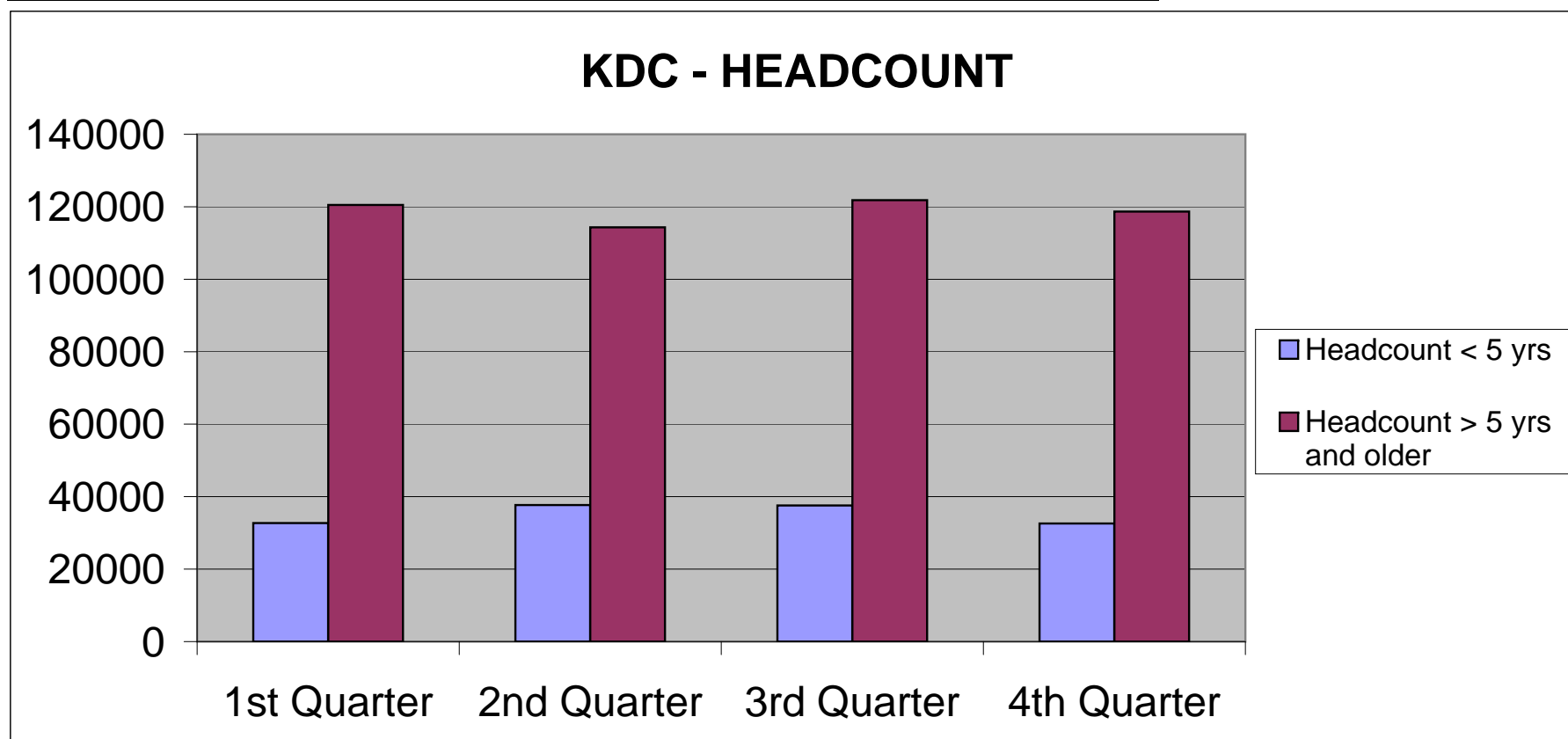


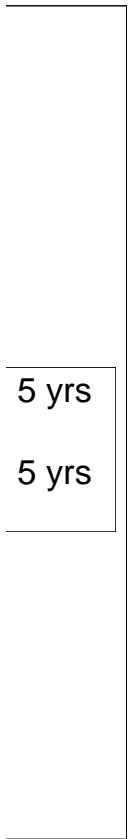
DEPARTMENT OF HEALTH



**KWADABEKA CHC - HEADCOUNT (2008)**

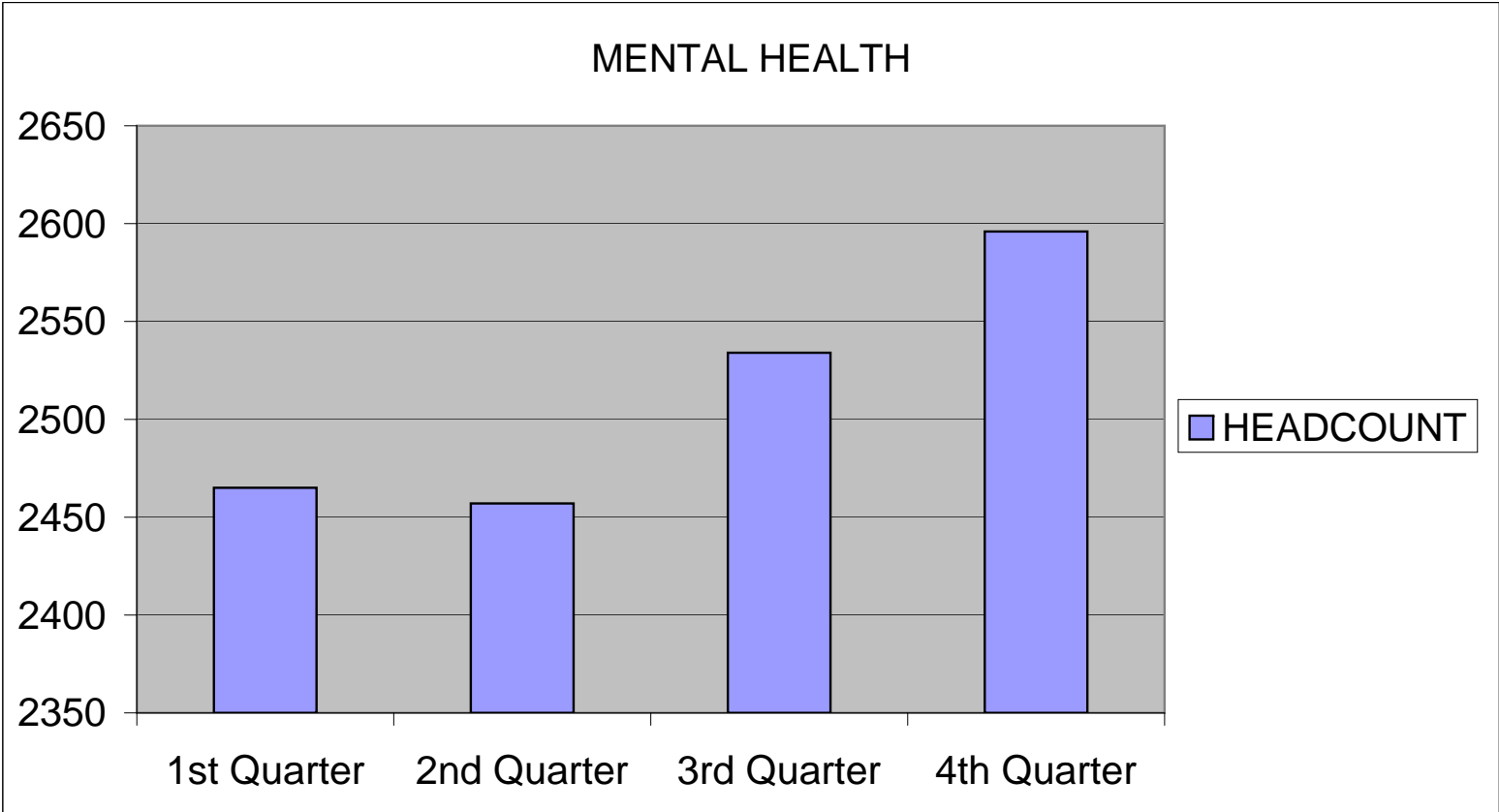
	1st Quarter	2nd Quarter	3rd Quarter	4th Quarter
Headcount < 5 yrs	32700	37694	37546	32580
Headcount > 5 yrs and older	120505	114304	121822	118684





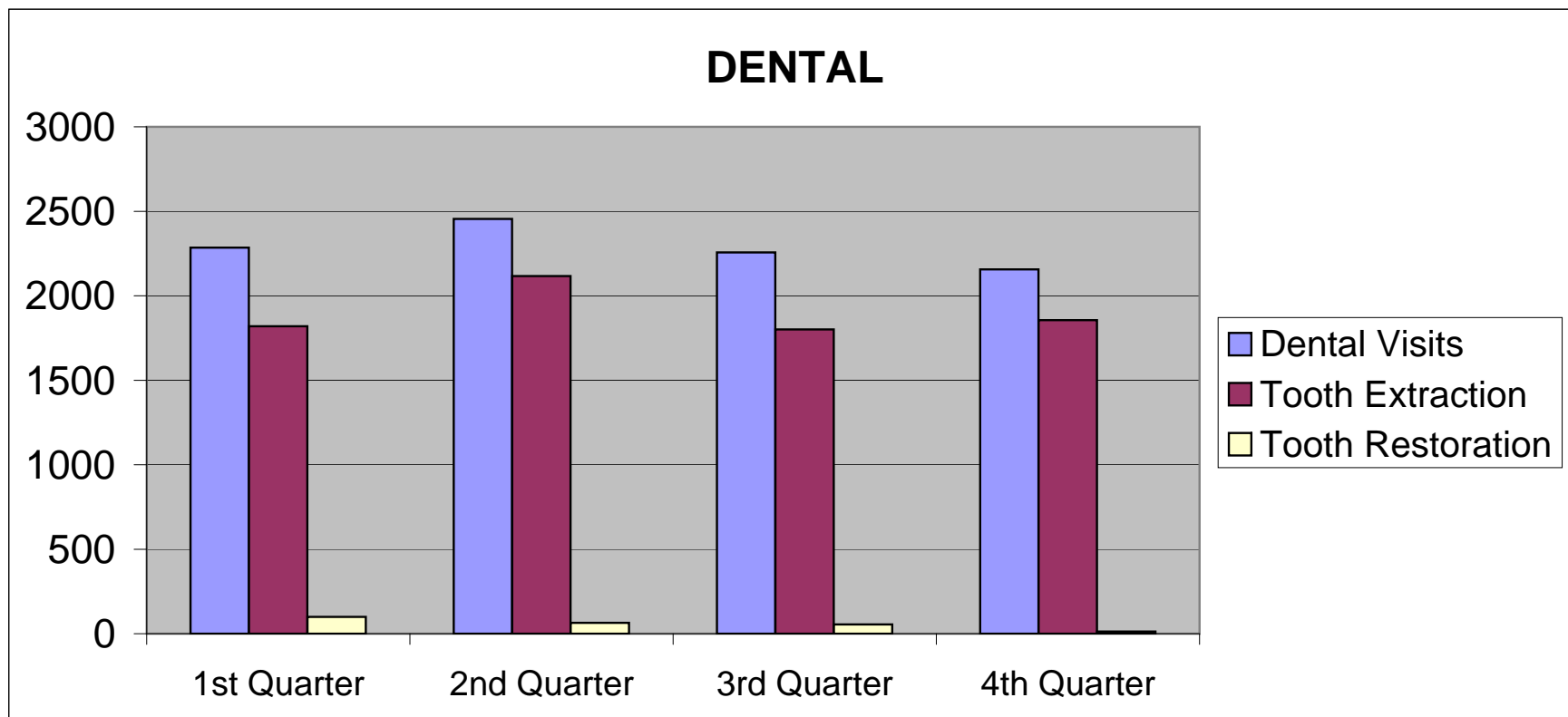
**MENTAL HEALTH (2008)**

	1st Quarter	2nd Quarter	3rd Quarter	4th Quarter
HEADCOUNT	2465	2457	2534	2596



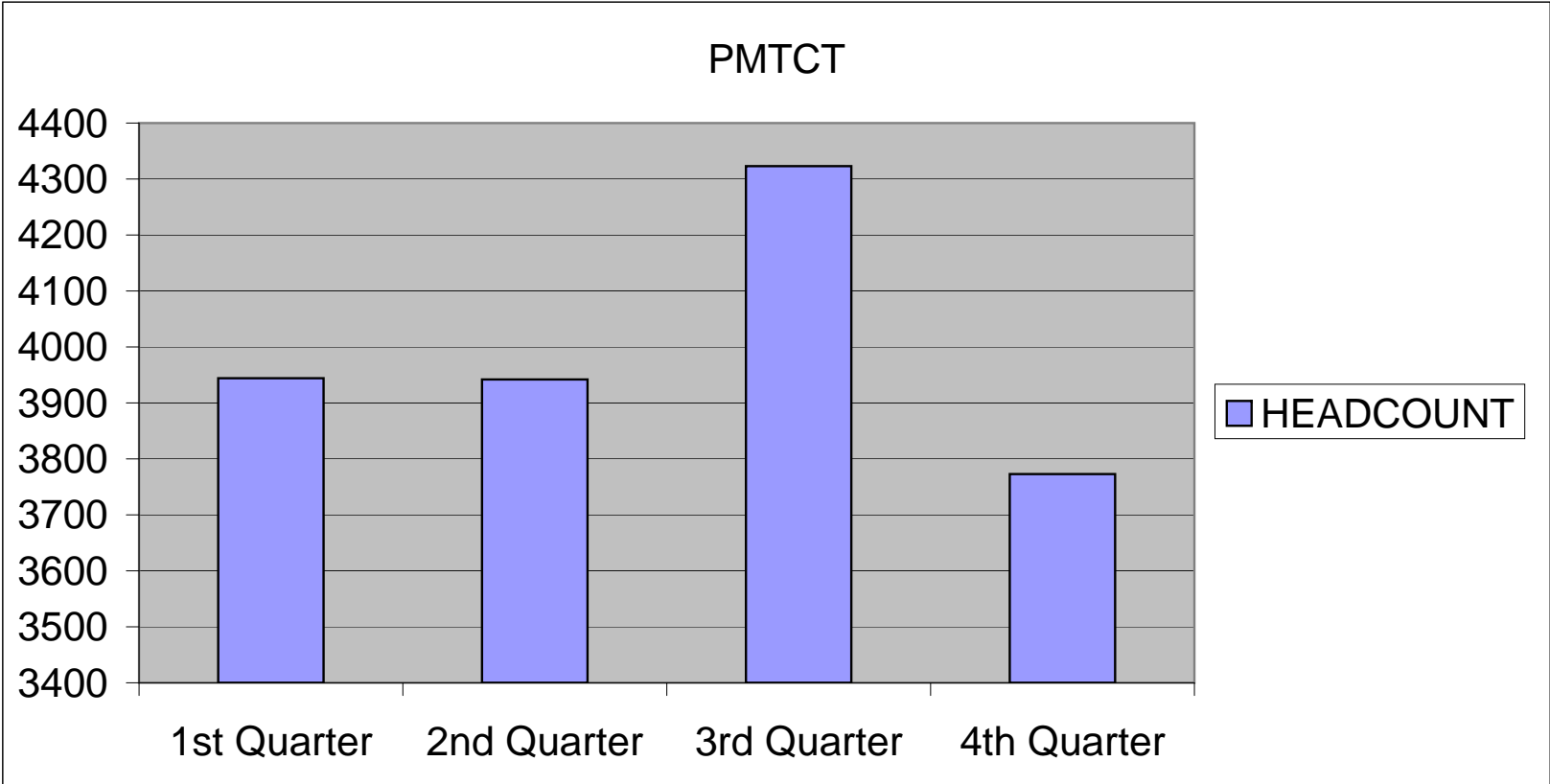
**DENTAL (2008)**

	1st Quarter	2nd Quarter	3rd Quarter	4th Quarter
Dental Visits	2285	2455	2257	2156
Tooth Extraction	1820	2117	1801	1856
Tooth Restoration	100	64	55	13



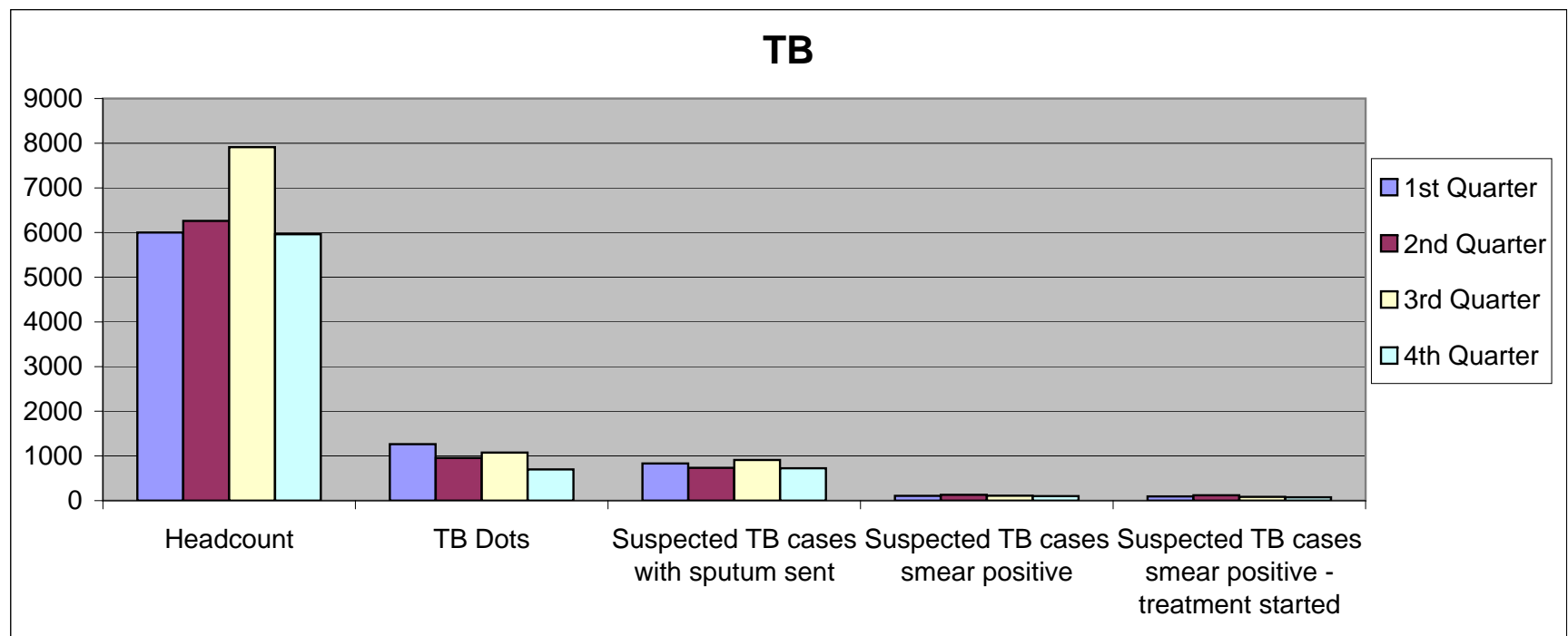
**PMTCT (2008)**

	1st Quarter	2nd Quarter	3rd Quarter	4th Quarter
HEADCOUNT	3944	3942	4323	3773



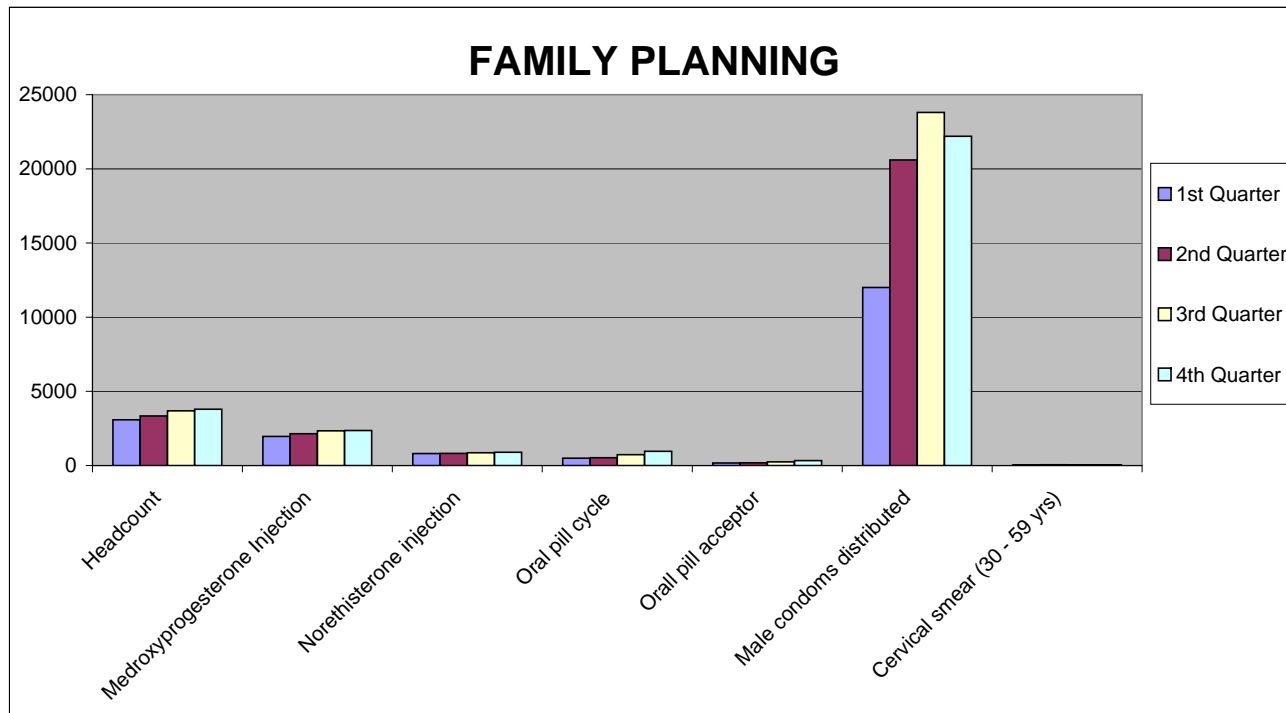
**TB (2008)**

	1st Quarter	2nd Quarter	3rd Quarter	4th Quarter
Headcount	6002	6260	7911	5962
TB Dots	1264	955	1076	697
Suspected TB cases with sputum sent	831	734	911	724
Suspected TB cases smear positive	107	131	110	102
Suspected TB cases smear positive - treatment started	95	120	84	74



**FAMILY PLANNING (2008)**

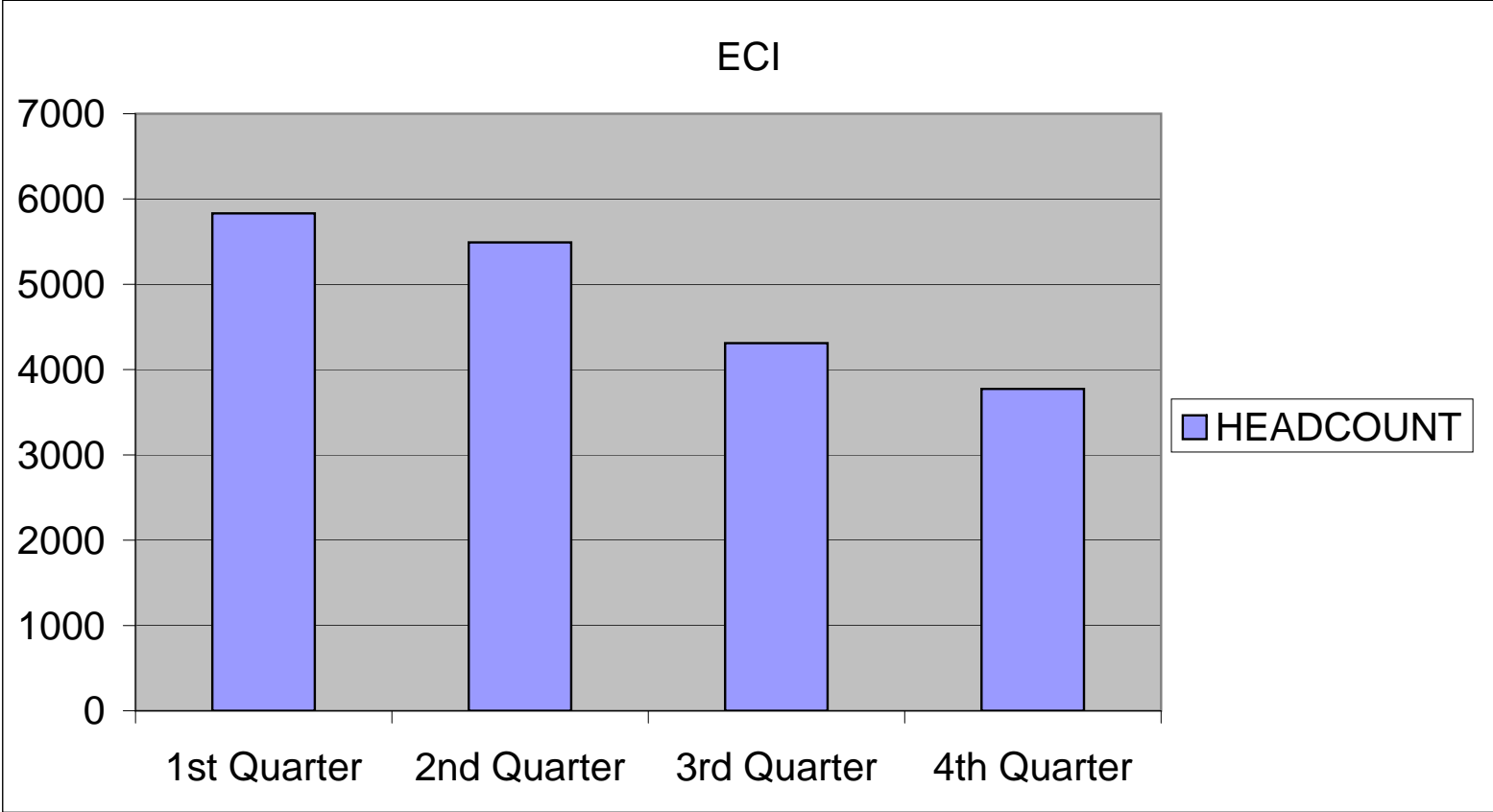
	1st Quarter	2nd Quarter	3rd Quarter	4th Quarter
Headcount	3085	3343	3688	3797
Medroxyprogesterone Injection	1958	2145	2342	2363
Norethisterone injection	814	821	861	897
Oral pill cycle	493	527	731	956
Orall pill acceptor	168	187	251	331
Male condoms distributed	12000	20600	23800	22200
Cervical smear (30 - 59 yrs)	35	49	39	40





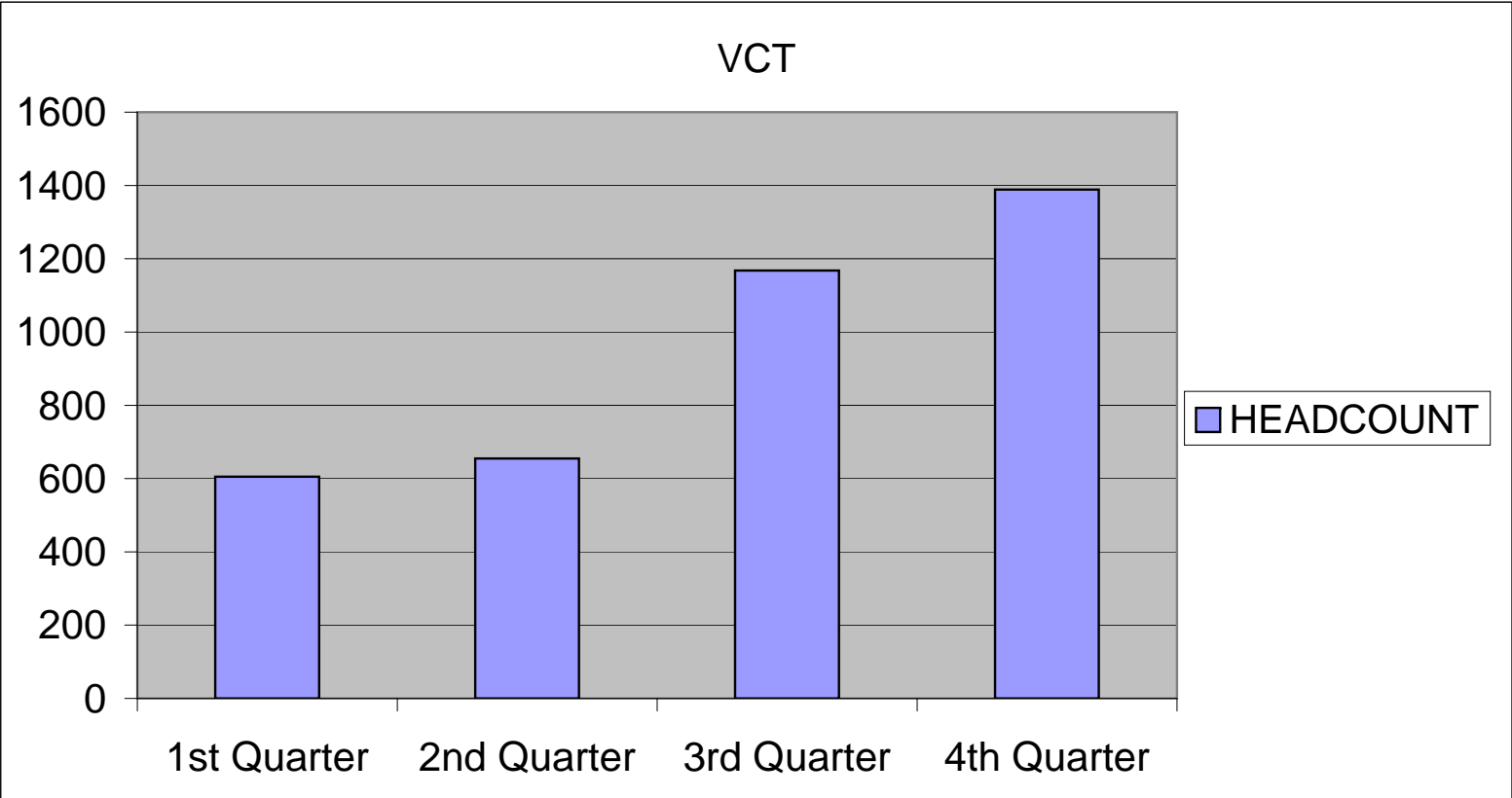
**HIV/AIDS (2008)**

	1st Quarter	2nd Quarter	3rd Quarter	4th Quarter
HEADCOUNT	5831	5492	4311	3774



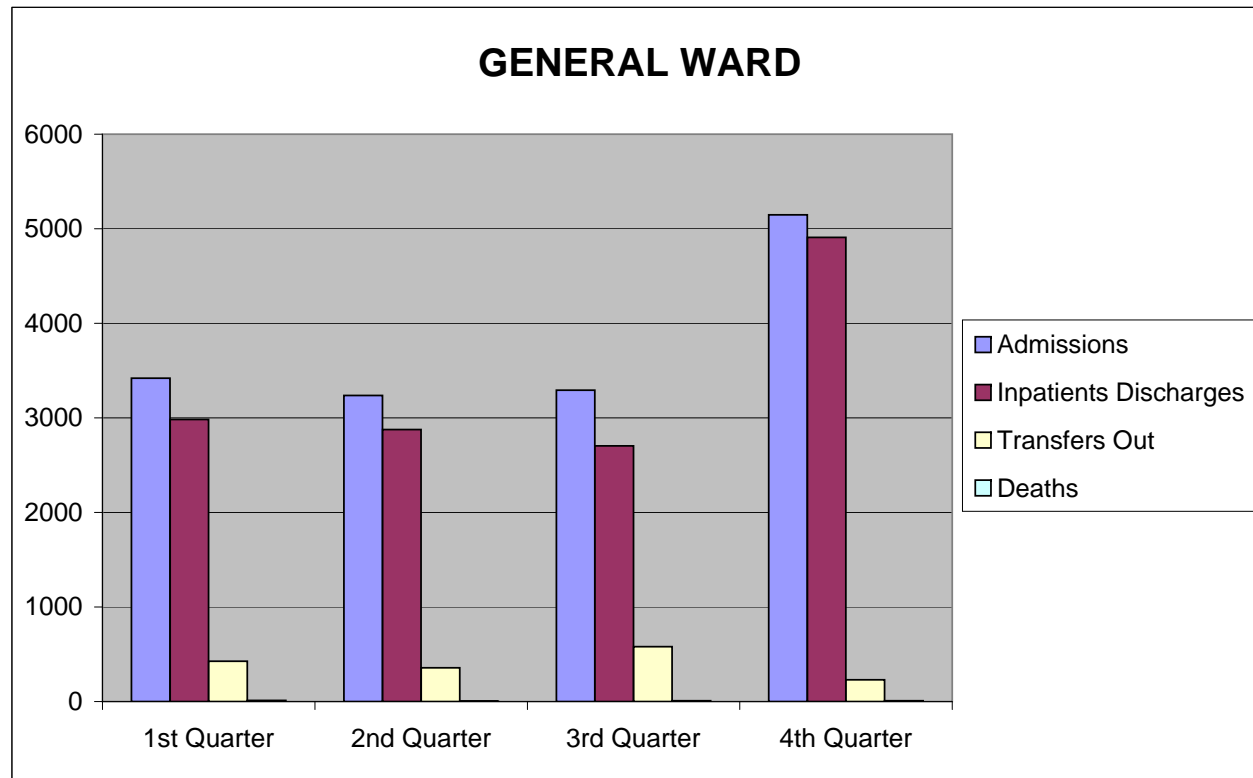
**VCT (2008)**

	1st Quarter	2nd Quarter	3rd Quarter	4th Quarter
HEADCOUNT	605	655	1168	1389



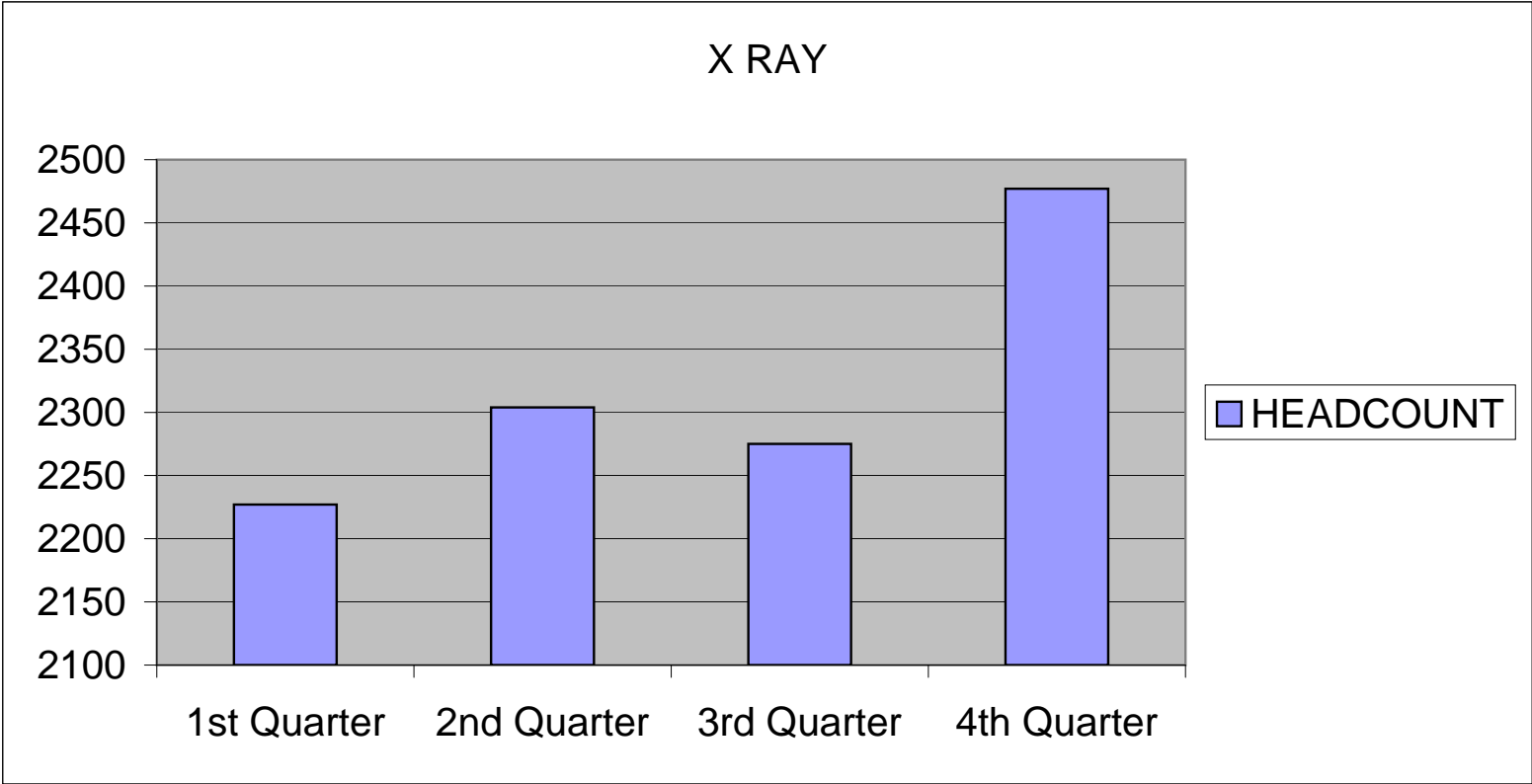
**GENERAL WARD (2008)**

	1st Quarter	2nd Quarter	3rd Quarter	4th Quarter
Admissions	3420	3237	3293	5148
Inpatients Discharges	2983	2876	2704	4909
Transfers Out	426	357	580	230
Deaths	11	4	9	9



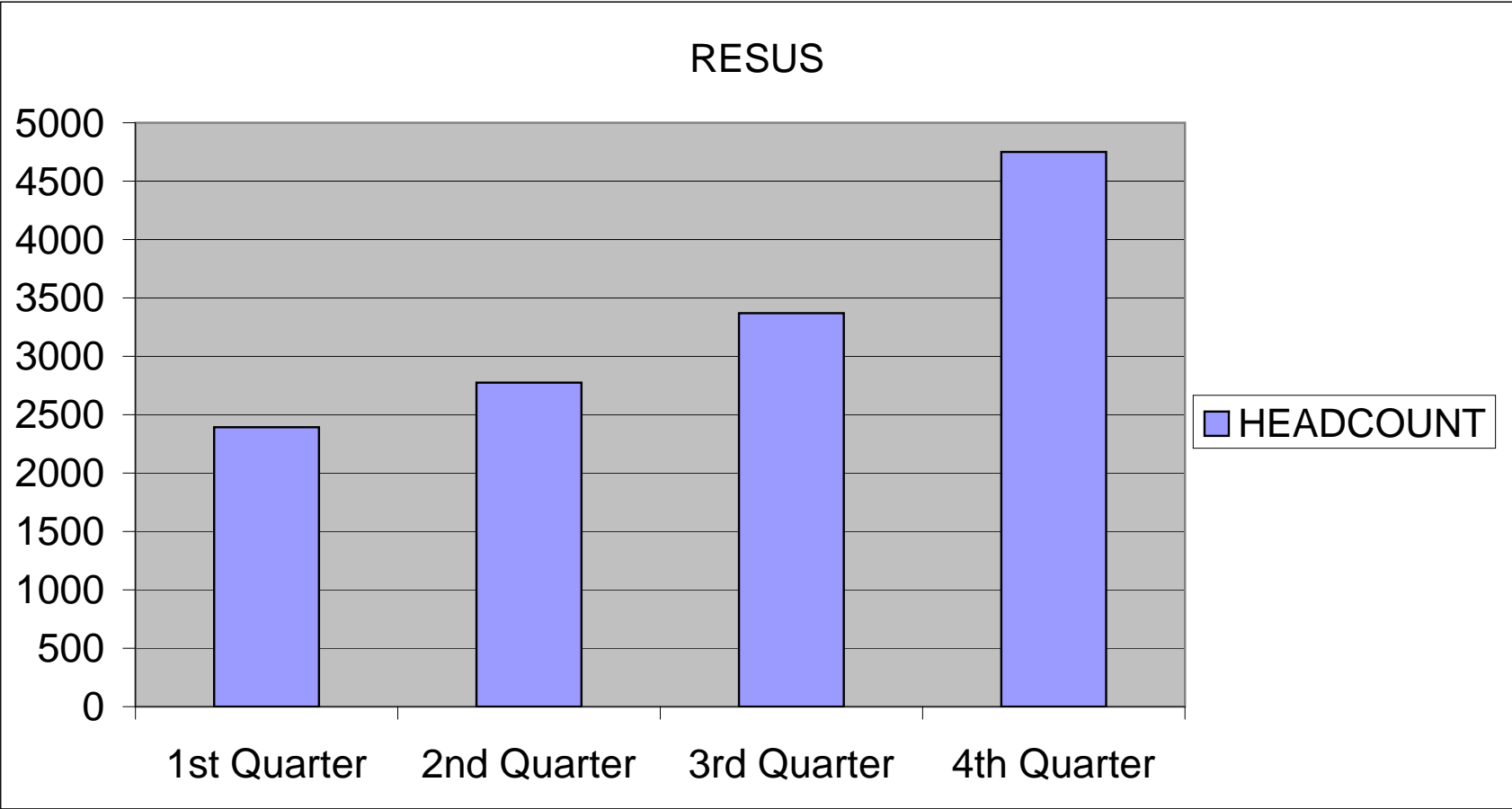
**X RAY (2008)**

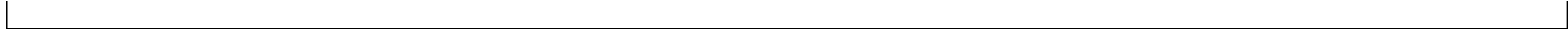
	1st Quarter	2nd Quarter	3rd Quarter	4th Quarter
HEADCOUNT	2227	2304	2275	2477



**RESUS (2008)**

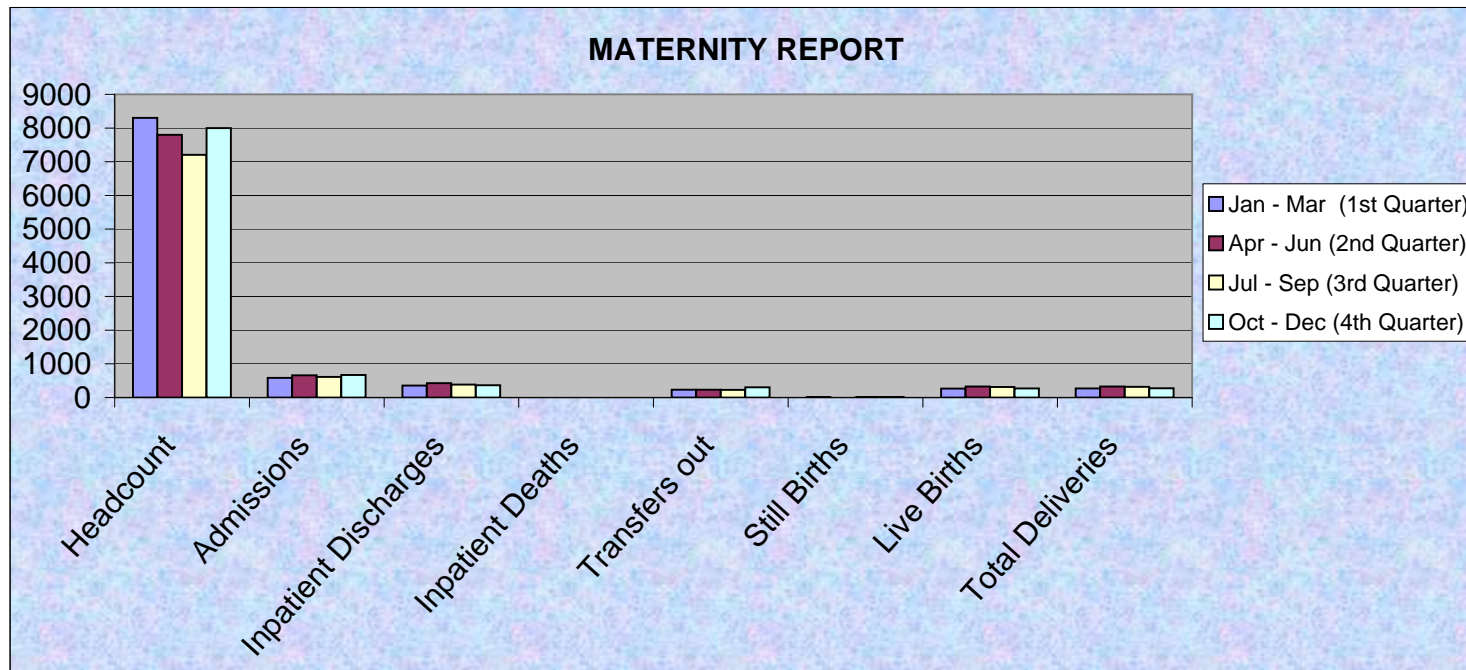
	1st Quarter	2nd Quarter	3rd Quarter	4th Quarter
HEADCOUNT	2393	2775	3369	4750





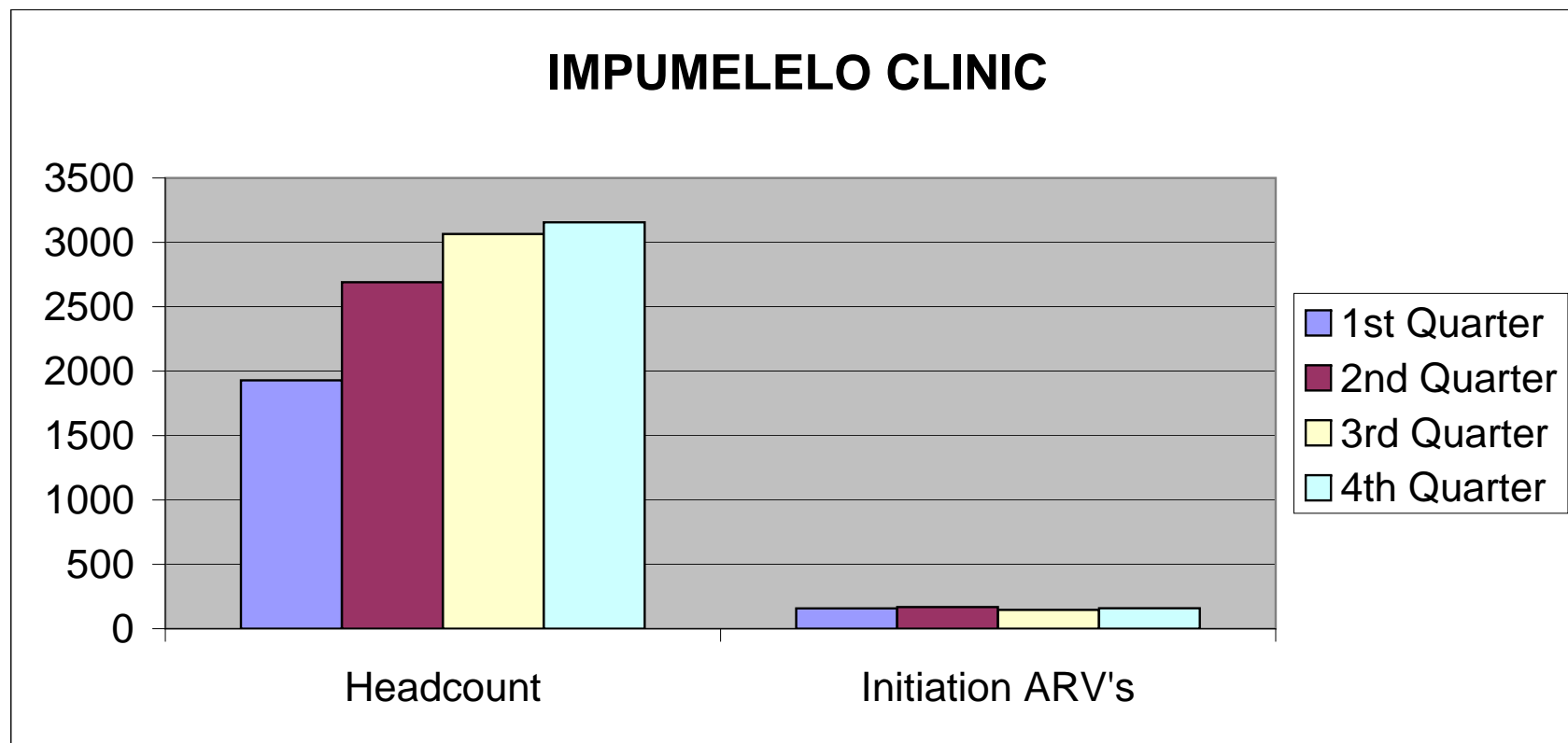
**MATERNITY REPORT (2008)**

	Jan - Mar (1st Quarter)	Apr - Jun (2nd Quarter)	Jul - Sep (3rd Quarter)	Oct - Dec (4th Quarter)
Headcount	8300	7798	7207	7997
Admissions	586	661	612	669
Inpatient Discharges	355	428	385	366
Inpatient Deaths	0	0	0	0
Transfers out	231	233	227	303
Still Births	4	0	6	3
Live Births	267	329	314	271
Total Deliveries	269	329	318	276



**IMPUMELELO CLINIC (2008)**

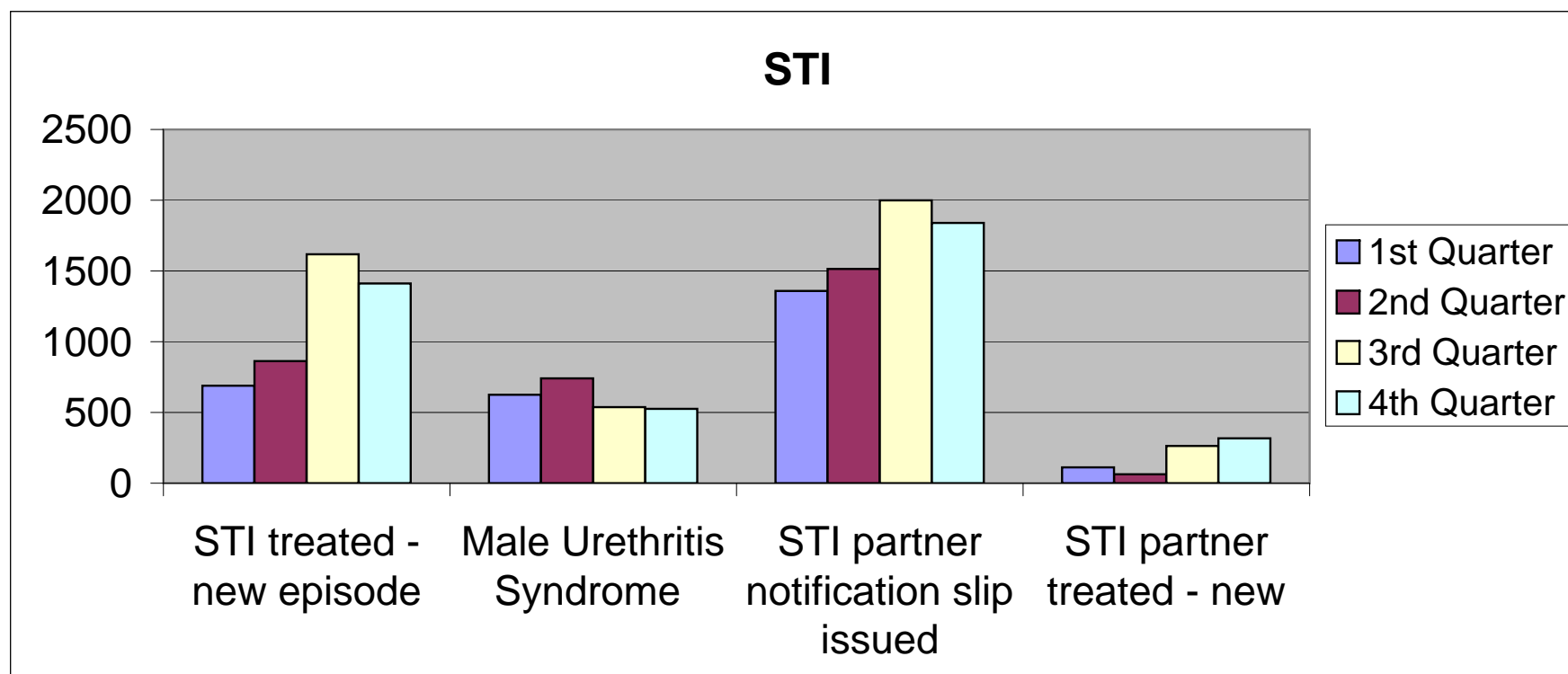
	1st Quarter	2nd Quarter	3rd Quarter	4th Quarter
Headcount	1929	2691	3065	3156
Initiation ARV's	158	168	146	159





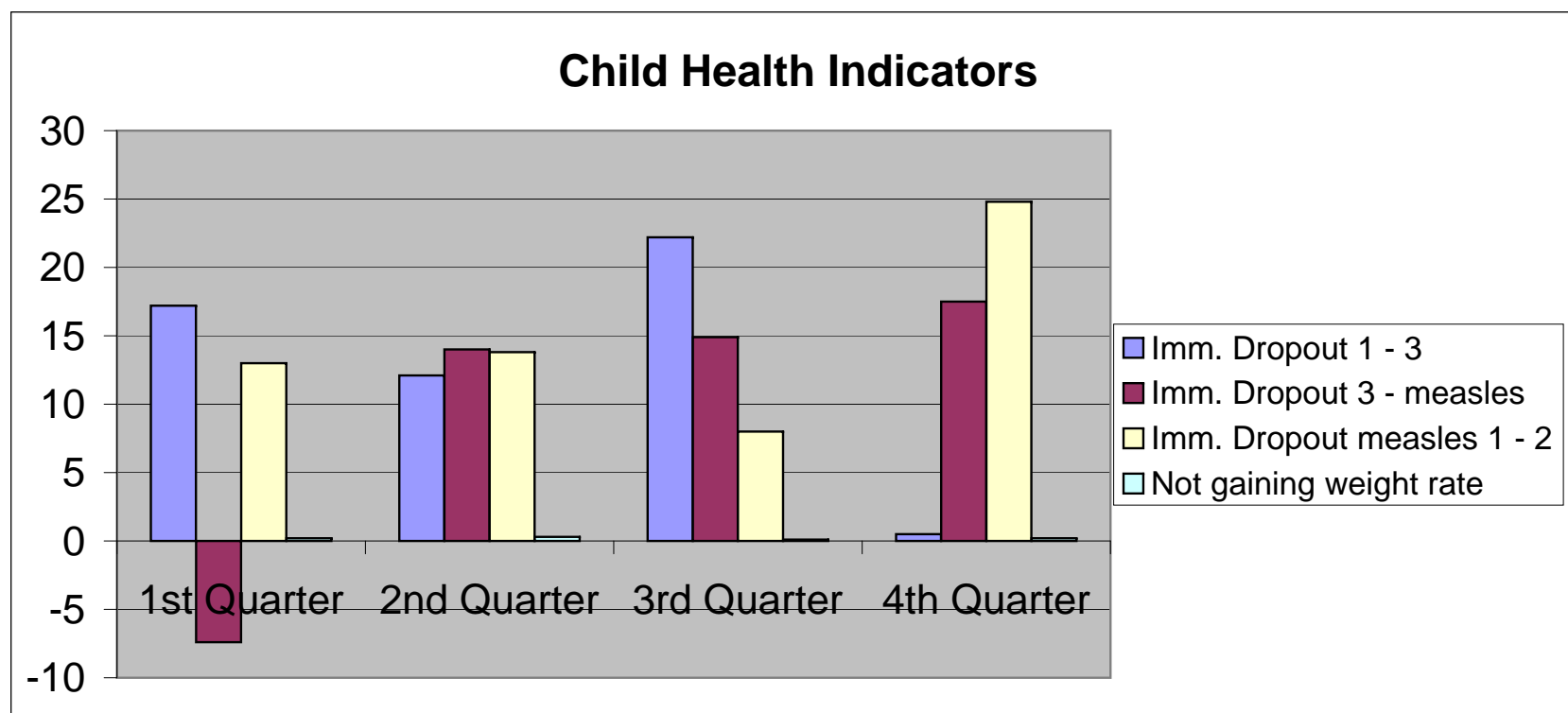
**STI (2008)**

	1st Quarter	2nd Quarter	3rd Quarter	4th Quarter
STI treated - new episode	689	863	1618	1412
Male Urethritis Syndrome	625	741	538	525
STI partner notification slip issued	1359	1514	1999	1839
STI partner treated - new	112	63	263	317



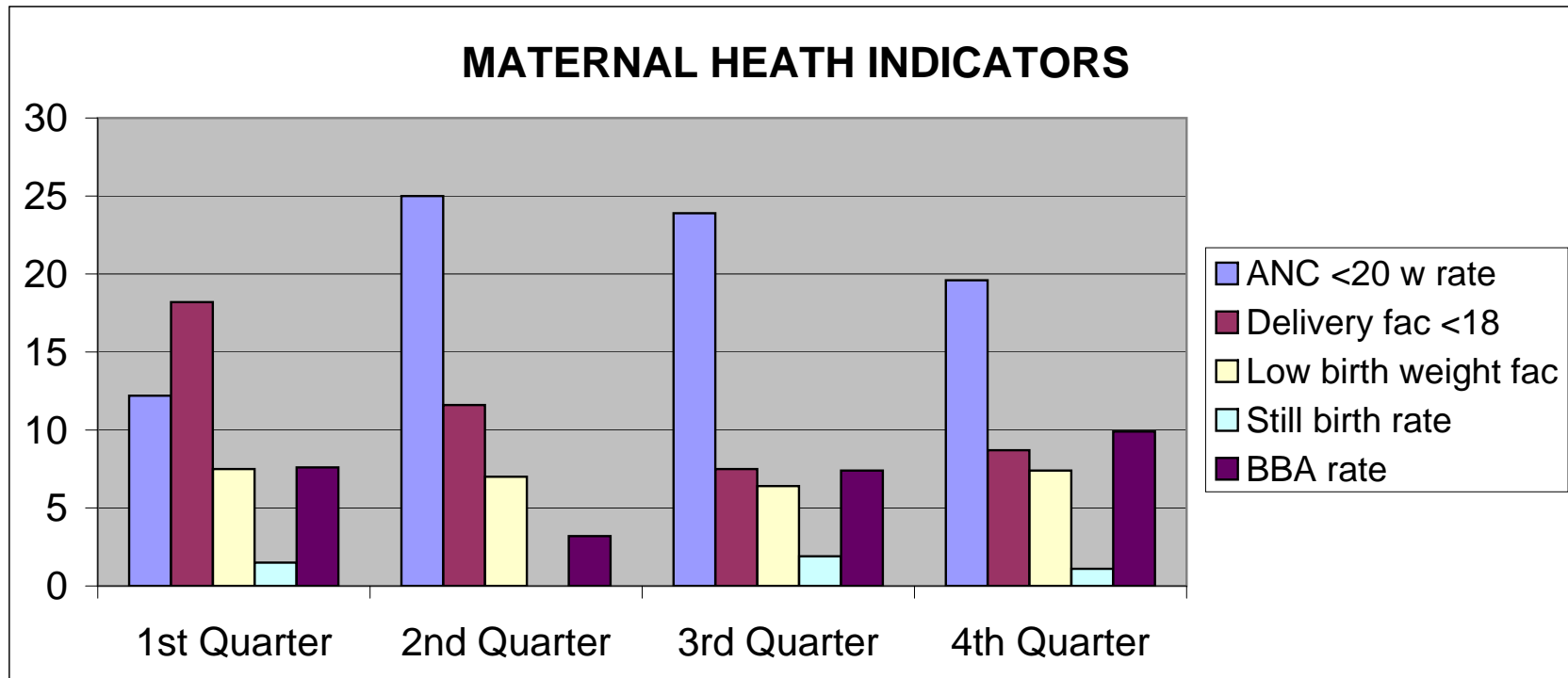
**CHILD HEALTH INDICATORS (2008)**

	1st Quarter	2nd Quarter	3rd Quarter	4th Quarter
Imm. Dropout 1 - 3	17.2	12.1	22.2	0.5
Imm. Dropout 3 - measles	-7.4	14	14.9	17.5
Imm. Dropout measles 1 - 2	13	13.8	8	24.8
Not gaining weight rate	0.2	0.3	0.1	0.2



**MATERNAL HEALTH INDICATORS (2008)**

	1st Quarter	2nd Quarter	3rd Quarter	4th Quarter
ANC <20 w rate	12.2	25	23.9	19.6
Delivery fac <18	18.2	11.6	7.5	8.7
Low birth weight fac	7.5	7	6.4	7.4
Still birth rate	1.5	0	1.9	1.1
BBA rate	7.6	3.2	7.4	9.9



**KWADABEKA MOBILE (2008)**

	1st Quarter	2nd Quarter	3rd Quarter	4th Quarter
Under 5 yrs	2233	3800	5564	3413
Over 5 yrs	2296	3260	4693	2574

