

MSELENI HOSPITAL



Year 2005/2006

MONTHLY INFORMATION

Batho Pele

**Compiled By:
Zodwa Maduna
(FIO)**

*P.O. Sibhayi
3967
Umkhanyakude District*

April 2005-March 2006

Table of contents	Page No.
* Editors comments	3
Hospital Information	
*Admissions	4
*Discharges	4
*Deaths	4
*Average Length Of Stay	4
*Bed Occupancy Rate	5
*Bed Turn Over Rate	5
*Death Rate	6
*Deliveries	6
*Inpatient Days	7
* Maternal Deaths	7
* Outpatient Headcount	8
*Psychiatric Patients	9
*PMTCT	10
*VCT	11
*HIV/AIDS	12
*Total tests and Total Positive	13
*Revenue Cash Collections	

Editor's Comment

Welcome to Mseleni Monthly information it's been of a great pleasure for me to give feedback on information that we have collected.

I would like to thank all the staff for your co-operation & your kindness support, all in all this wouldn't be successful if it wasn't because of you.

Especially to Dr V.G FredLund our Medical Manager for your kindness support.

NB: Your suggestions & comments on how we should improve are more than welcome.

Vision – Informatics

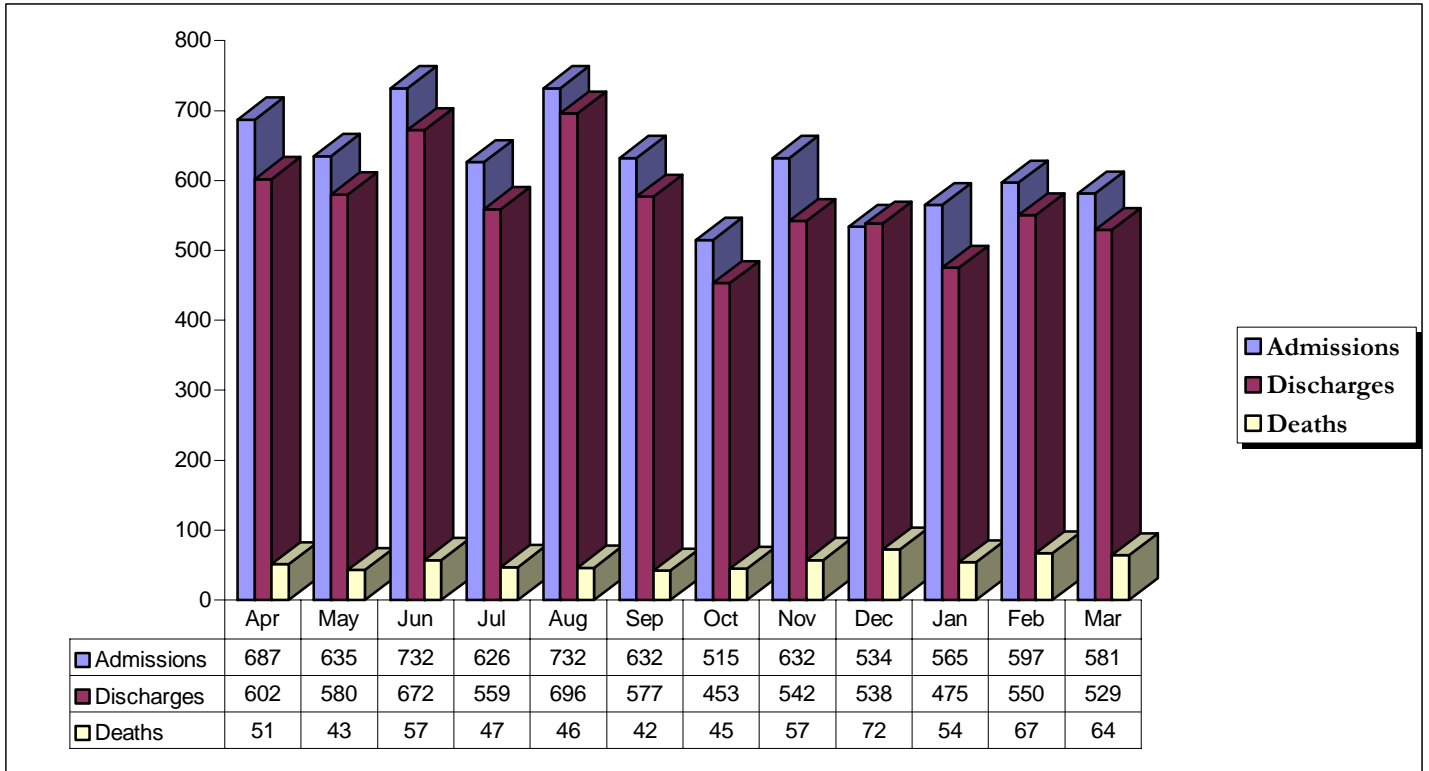
To provide quality, accurate and reliable information to all our stakeholders timeously

Mission Statement

Committed to deliver quality information and support for effective production and improved health care for all stakeholders which includes all clients, satellite clinics, district and head offices and to maintain high standards of provincial health information systems

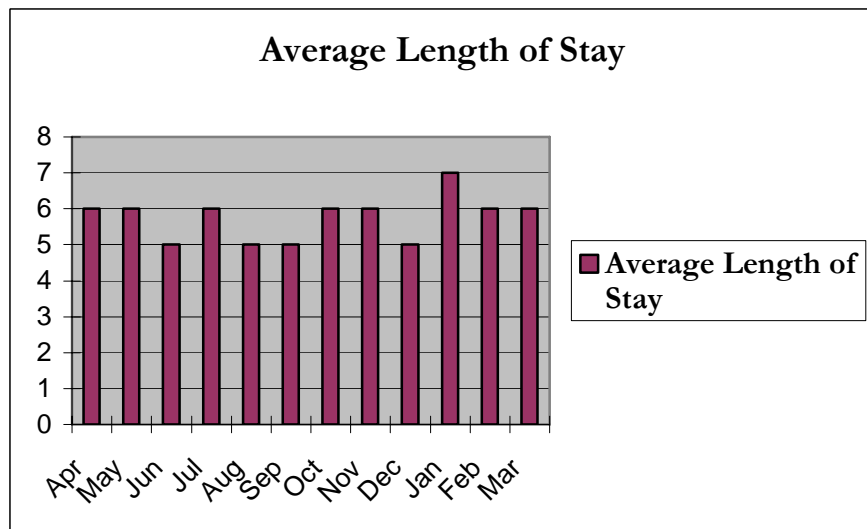
April 2005-March 2006

Admissions, Discharges and Deaths



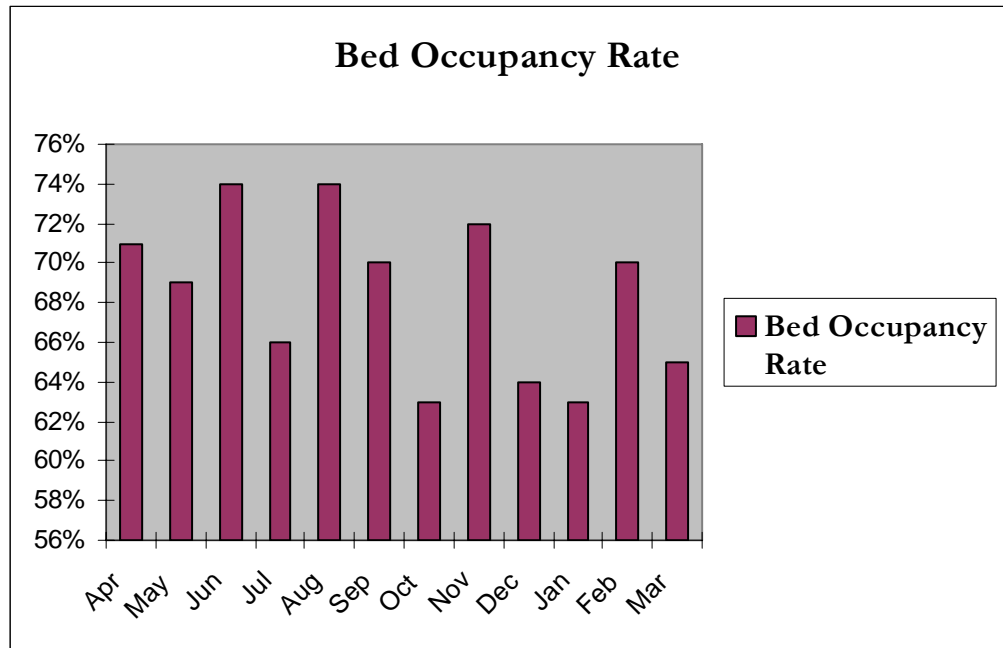
Average Length of Stay

Average Length Of Stay	
Apr	6
May	6
Jun	5
Jul	6
Aug	5
Sep	5
Oct	6
Nov	6
Dec	5
Jan	7
Feb	6
Mar	6



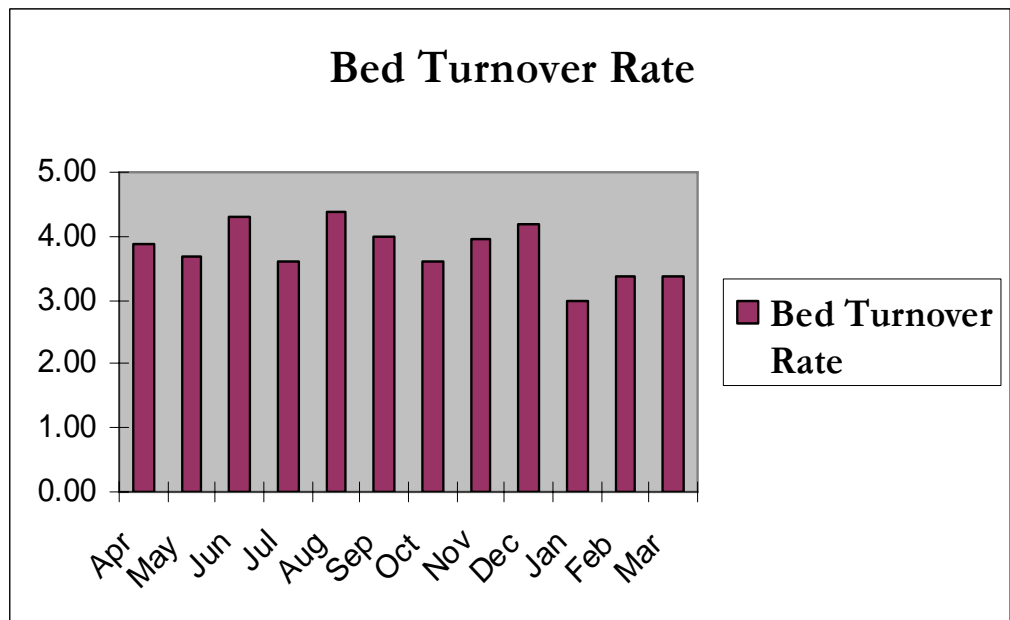
Bed Occupancy Rate

Apr	71%
May	69%
Jun	74%
Jul	66%
Aug	74%
Sep	70%
Oct	63%
Nov	72%
Dec	64%
Jan	63%
Feb	70%
Mar	65%



Bed Turnover Rate

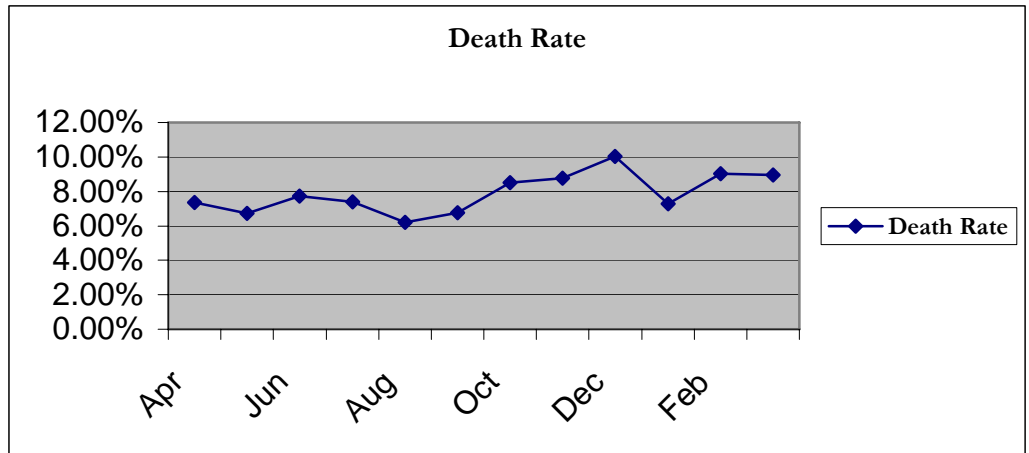
Apr	3.87
May	3.69
Jun	4.30
Jul	3.62
Aug	4.37
Sep	3.98
Oct	3.60
Nov	3.96
Dec	4.20
Jan	2.97
Feb	3.36
Mar	3.36



April 2005-March 2006

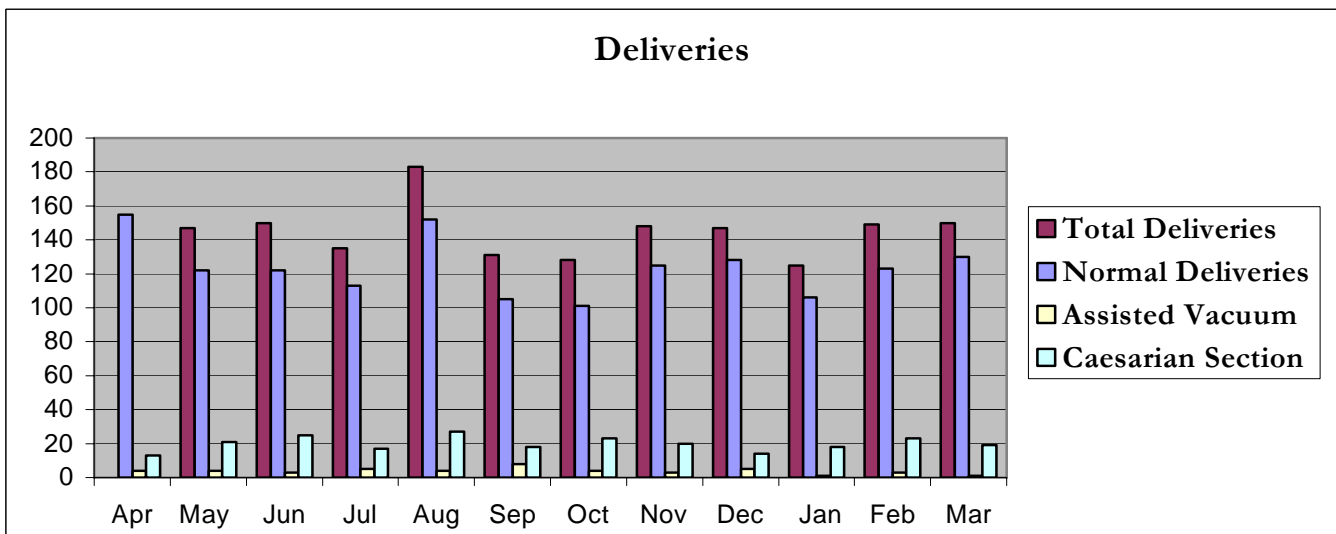
Death Rate

Apr	7.34%
May	6.71%
Jun	7.73%
Jul	7.41%
Aug	6.22%
Sep	6.78%
Oct	8.52%
Nov	8.76%
Dec	10.02%
Jan	7.28%
Feb	9.03%
Mar	8.94%



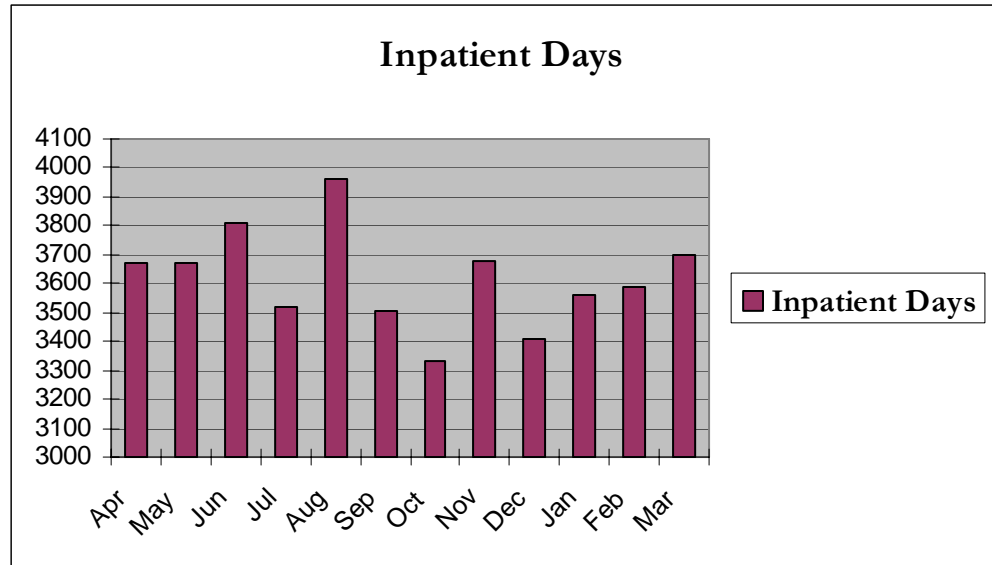
Deliveries

	Total deliveries	Normal Delivery	Assisted Vacuum	Caesarian
Apr	172	155	4	13
May	147	122	4	21
Jun	150	122	3	25
Jul	135	113	5	17
Aug	183	152	4	27
Sep	131	105	8	18
Oct	128	101	4	23
Nov	148	125	3	20
Dec	147	128	5	14
Jan	125	106	1	18
Feb	149	123	3	23
Mar	150	130	1	19



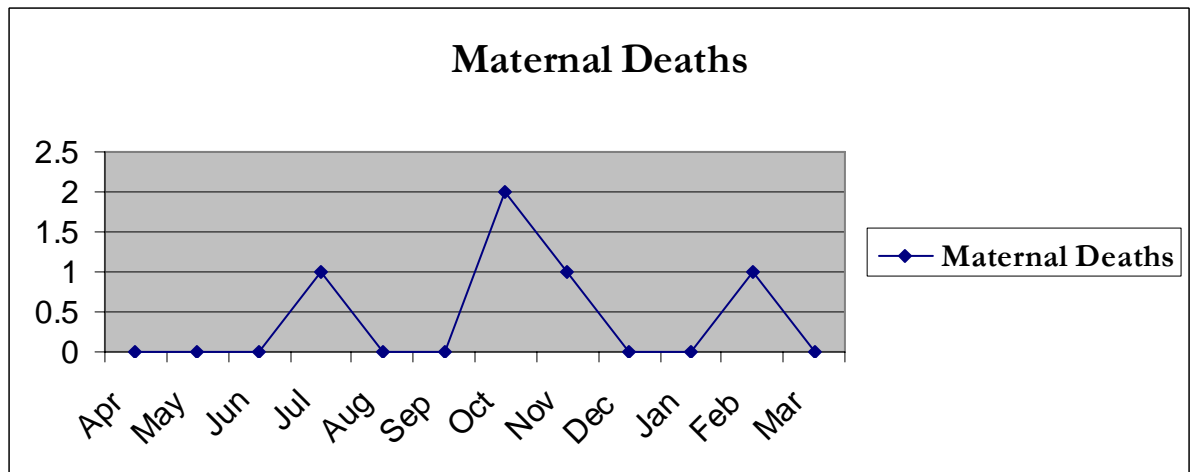
Inpatient Days

Apr	3674
May	3670
Jun	3809
Jul	3522
Aug	3965
Sep	3508
Oct	3333
Nov	3677
Dec	3405
Jan	3559
Feb	3589
Mar	3700



Maternal Deaths

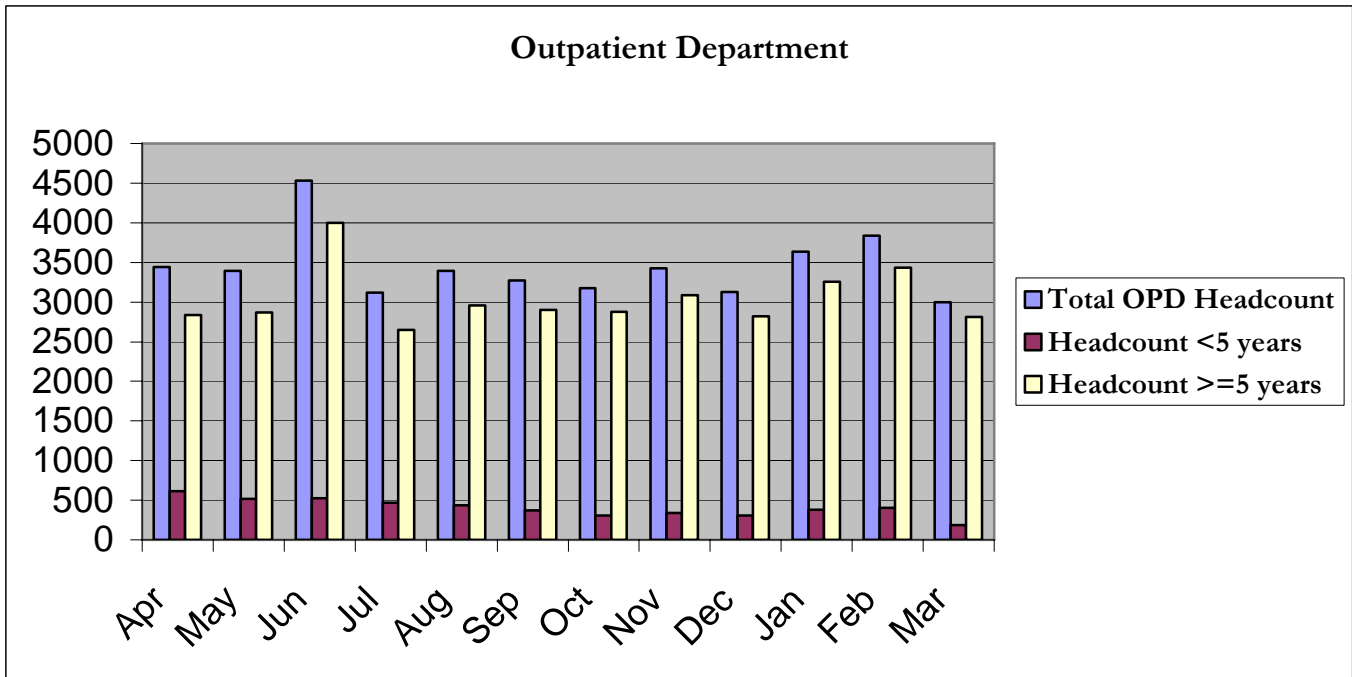
Apr	0
May	0
Jun	0
Jul	1
Aug	0
Sep	0
Oct	2
Nov	1
Dec	0
Jan	0
Feb	1
Mar	0



April 2005-March 2006

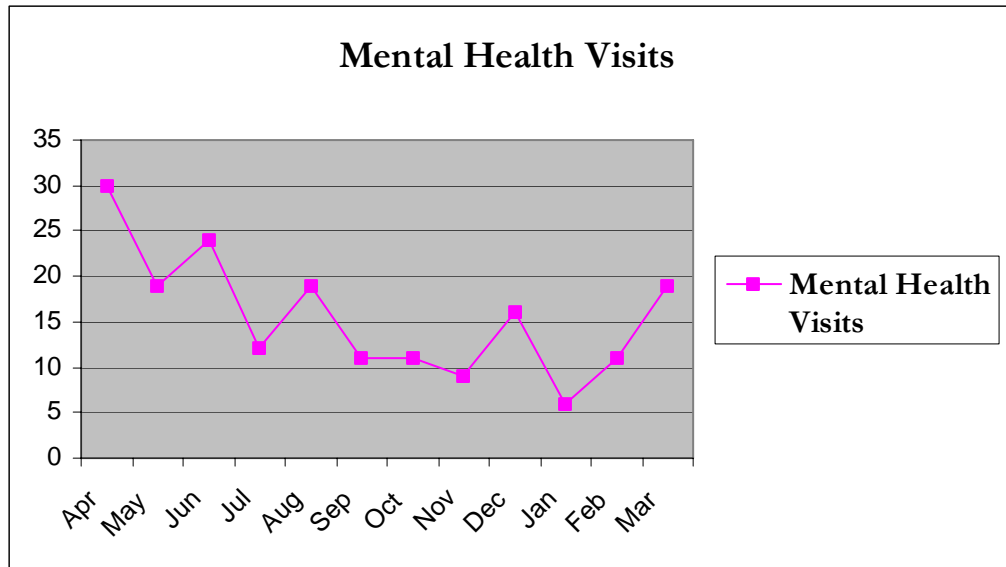
Outpatients Headcount

	Total < 5 yrs	Total >=5yrs	Total
Apr	610	2834	3444
May	520	2870	3390
Jun	529	4000	4529
Jul	472	2648	3120
Aug	435	2960	3395
Sep	368	2903	3271
Oct	304	2872	3176
Nov	337	3088	3425
Dec	307	2821	3128
Jan	379	3254	3633
Feb	405	3435	3840
Mar	188	2810	2998



Psychiatric Patients

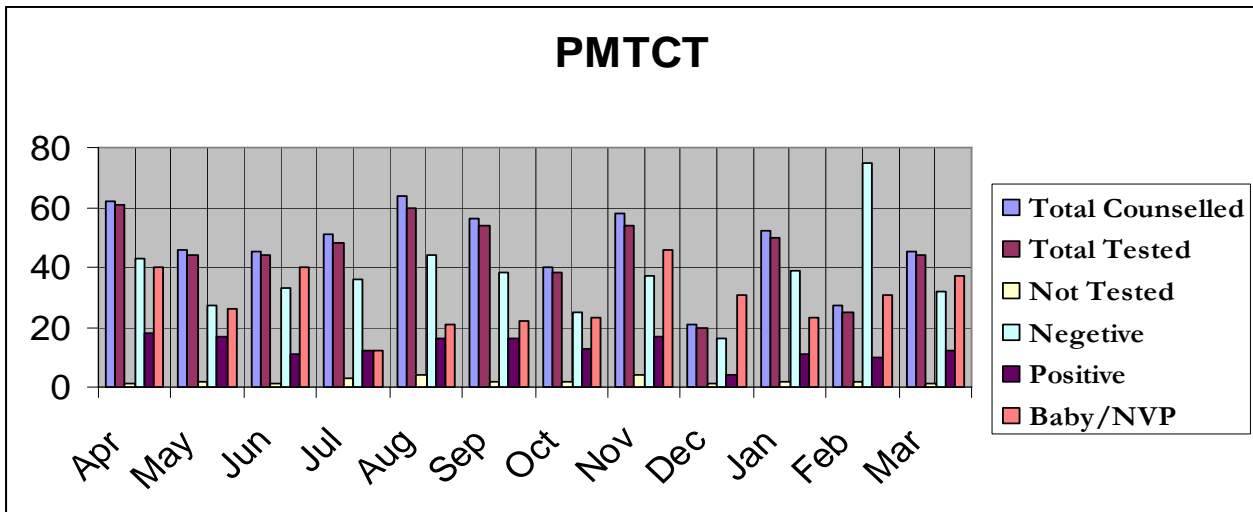
Apr	30
May	19
Jun	24
Jul	12
Aug	19
Sep	11
Oct	11
Nov	9
Dec	16
Jan	6
Feb	11
Mar	19



April 2005-March 2006

PMTCT

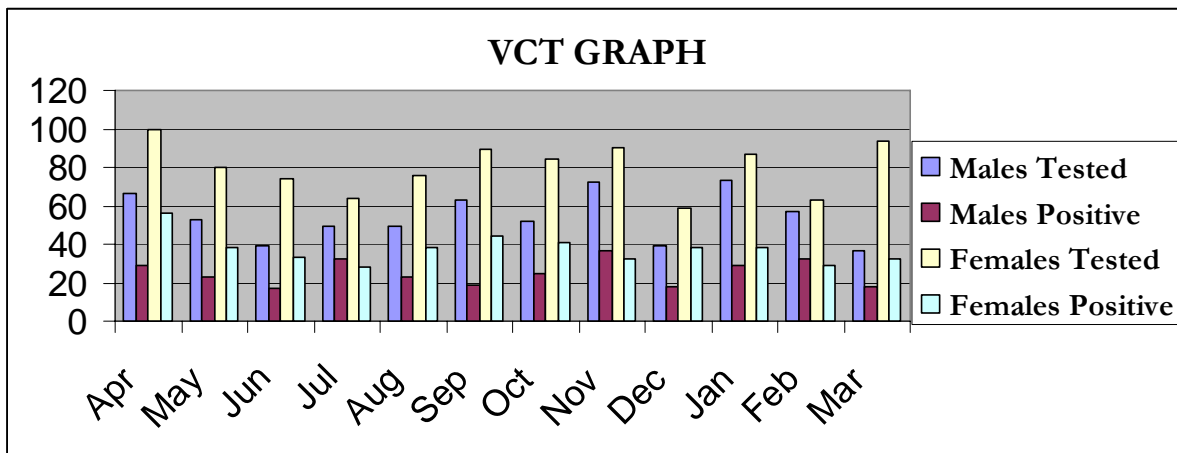
Month	Total Counseled	Total Tested	Not Tested	Negative	Positive	Baby/NVP
Apr	62	61	1	43	18	40
May	46	44	2	27	17	26
Jun	45	44	1	33	11	40
Jul	51	48	3	36	12	12
Aug	64	60	4	44	16	21
Sep	56	54	2	38	16	22
Oct	40	38	2	25	13	23
Nov	58	54	4	37	17	46
Dec	21	20	1	16	4	31
Jan	52	50	2	39	11	23
Feb	27	25	2	75	10	31
Mar	45	44	1	32	12	37



April 2005-March 2006

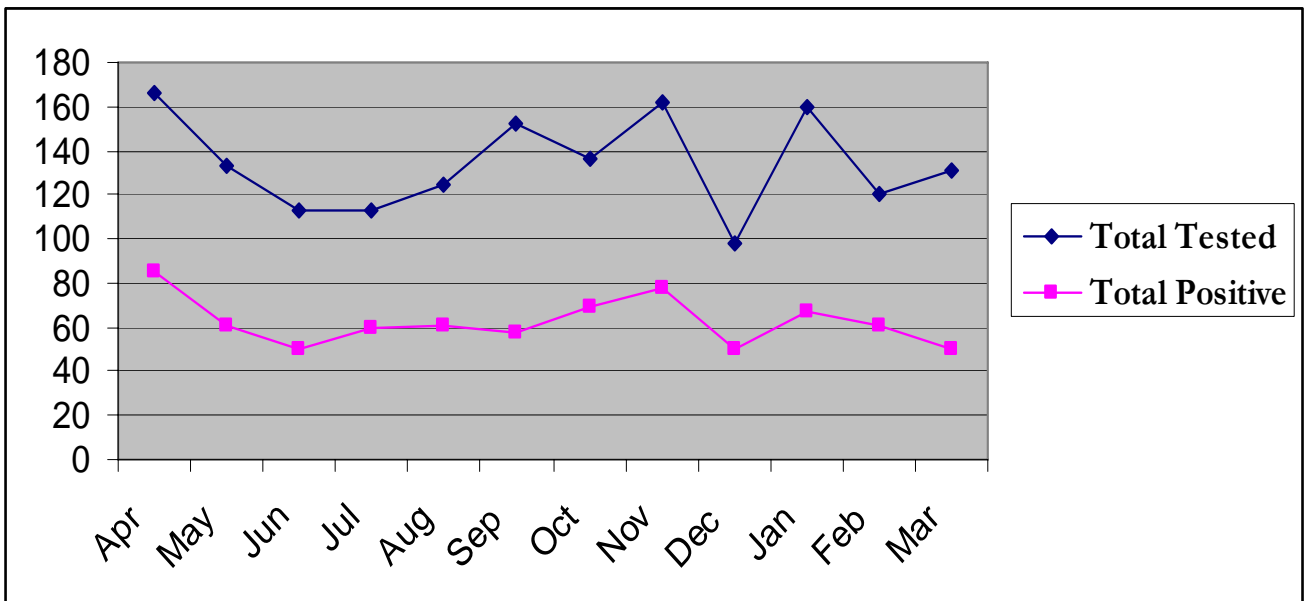
VCT

Month	Males Tested	Males Positive	Females Tested	Females Positive
Apr	66	29	100	56
May	53	23	80	38
Jun	39	17	74	33
Jul	49	32	64	28
Aug	49	23	76	38
Sep	63	19	89	44
Oct	52	25	84	41
Nov	72	37	90	32
Dec	39	18	59	38
Jan	73	29	87	38
Feb	57	32	63	29
Mar	37	18	94	32



April 2005-March 2006

Month	Total Tested	Total Positive
Apr	166	85
May	133	61
Jun	113	50
Jul	113	60
Aug	125	61
Sep	152	57
Oct	136	69
Nov	162	78
Dec	98	50
Jan	160	67
Feb	120	61
Mar	131	50



Revenue Cash Collections

Apr	R 14,776.20
May	R 13,142.75
Jun	R 17,098.10
Jul	R 16,882.39
Aug	R 15,438.65
Sep	R 15,767.90
Oct	R 16,720.60
Nov	R 17,074.90
Dec	R 17,061.40
Jan	R 16,097.90
Feb	R 18,738.80
Mar	R 16,434.15

