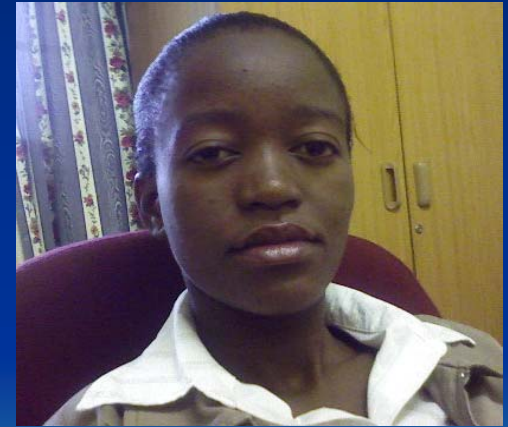


Nkonjeni Hospital Information Technology

Information Bulletin
Apr '07 - Mar '08



Mpume Nxumalo- FIO



Zanele Kunene – Data Capturer



Mpume Nxumalo (editor) - FIO

Information Technology is one of the most important departments in all institutions. I think it's important to remember that information at Nkonjeni hospital, indeed worldwide, came about not because it was a good business idea, but because there is a need for it. There is always a need for good quality information and all of us need assistance when it comes to knowing what is happening in our institutions. Information management started out as a system whereby we inform everyone on what is happening inside our health facilities that involves Human Resources, Finances, Customer Care and Service delivery, and clearly there should be regulation to maintain ethical conduct on behalf of the abovementioned main factors (raw data supplies) and Information analysers. This is essentially owned by all of us, no one is exempt from information. Information culture must be well known and be exercised. Good, reliable and consistent

In conclusion we must always remember that **“Good quality data has the following characteristics (“the three C’s” of data quality)”**

- Correct
- Complete
- Consistent

Data Uses:

Assessing performance;

Measuring programme effectiveness and impact

Reporting to relevant stakeholders – accountability purposes;

Decision making process – it shows the extent/ magnitude of the problem;

Making timely data-driven decisions

Essential data set for facility

Information cycle – diagram links

Collecting

Processing

Analyzing

Presenting

Interpreting

Using information

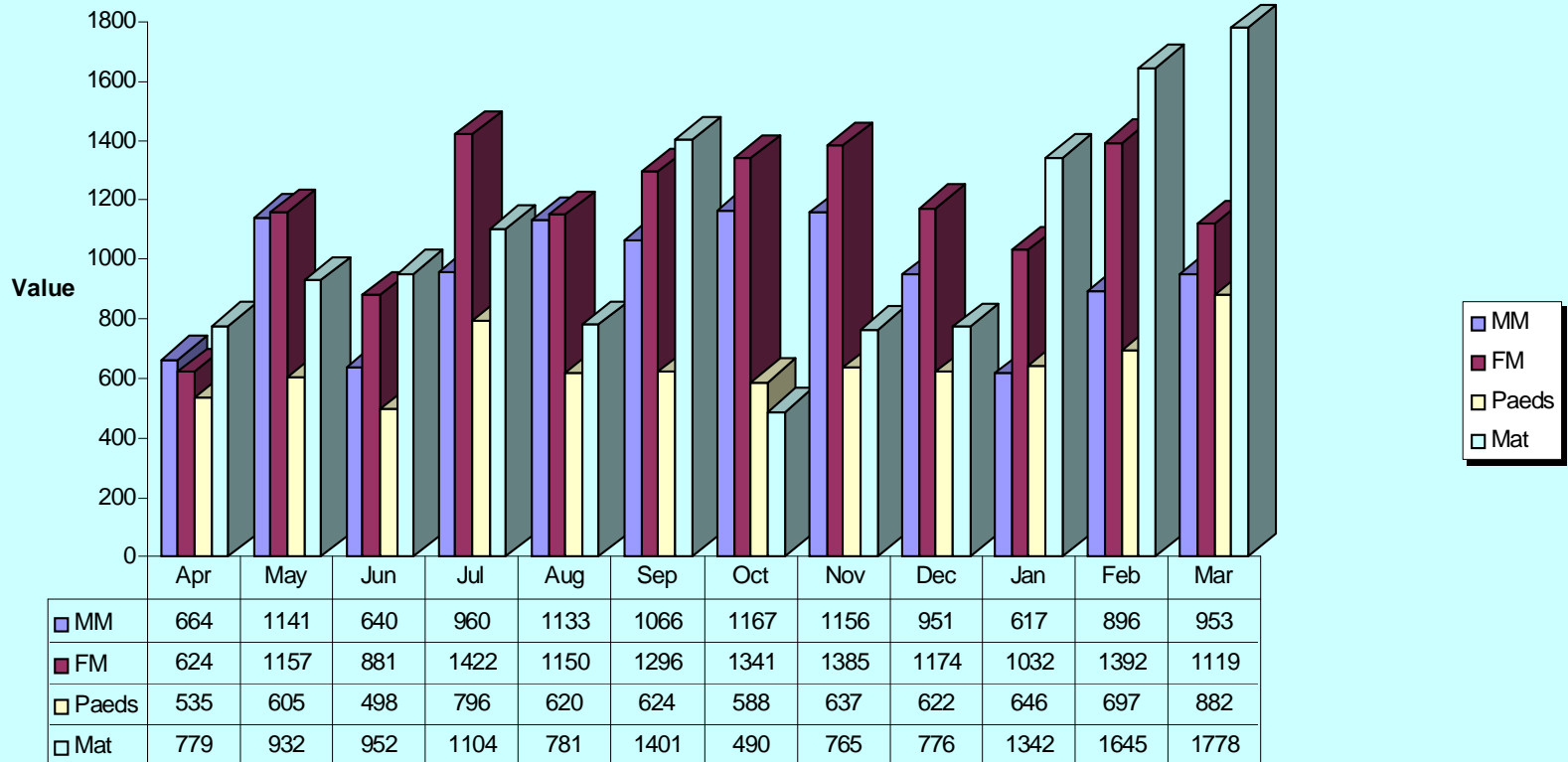


The CEO's Perspective

- This is a long journey that we are committed to walk.
- As we have started we are confident that we will grow in the process of managing our information for effective decision making at all levels
- We could not get data on financial, systems and HR indicators until the time of publication of this bulletin, but we assure our readers that the next issue will be complete.
- Any input and contributions to help us to improve our Information bulletin is most welcome
- We want to acknowledge the assistance and support our team received from GJ Crooks hospital management and Information Management team.
- We are hoping for a lasting relationship and support as they have developed and mastered the art of managing their information over time.



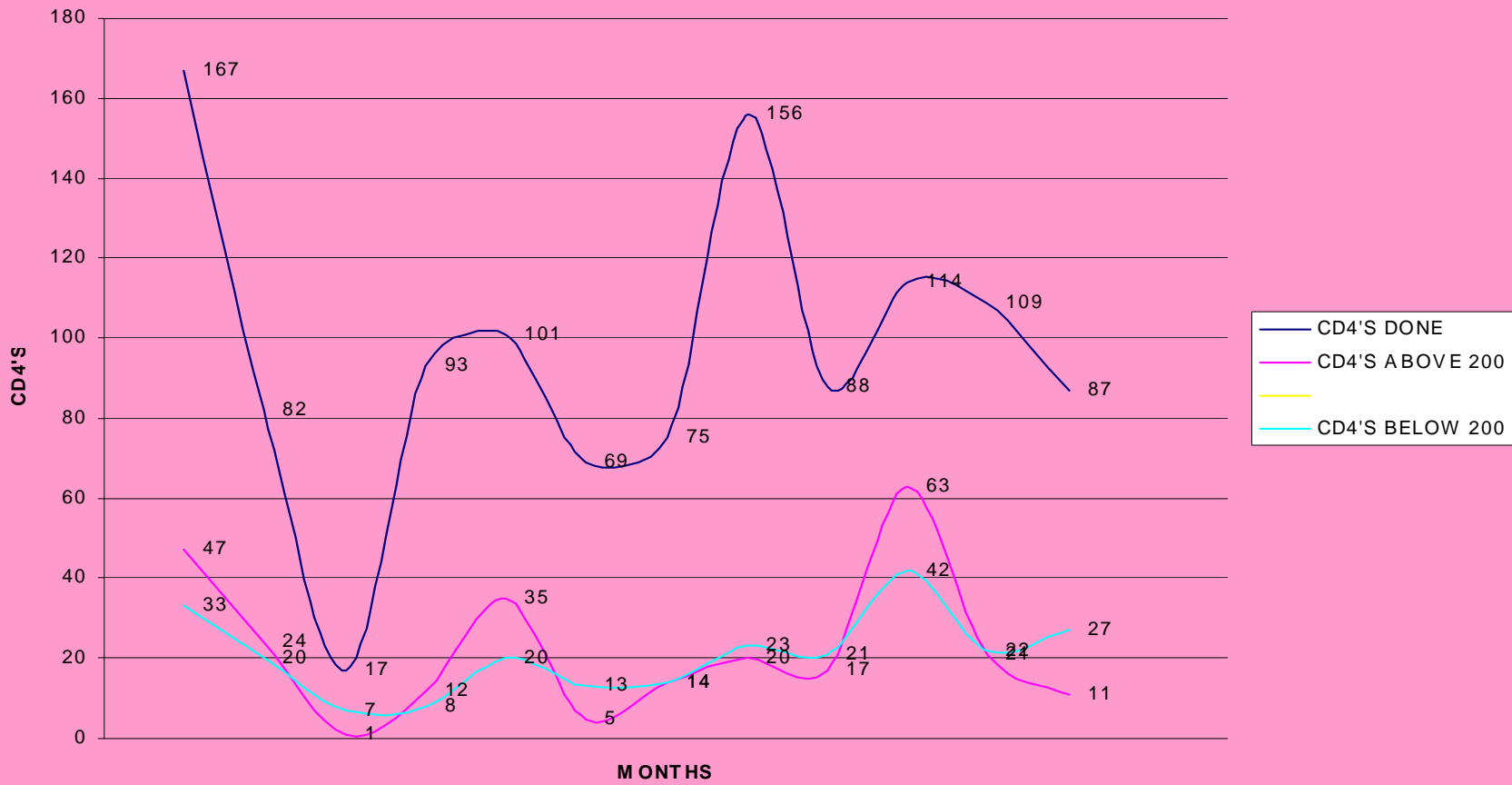
NKONJENI HOSPITAL
THE BELOW 3 D COLUMN CHART REFLECTS INPATIENTS DAYS
PER WARD AS FROM
APR '07 TO MAR'08



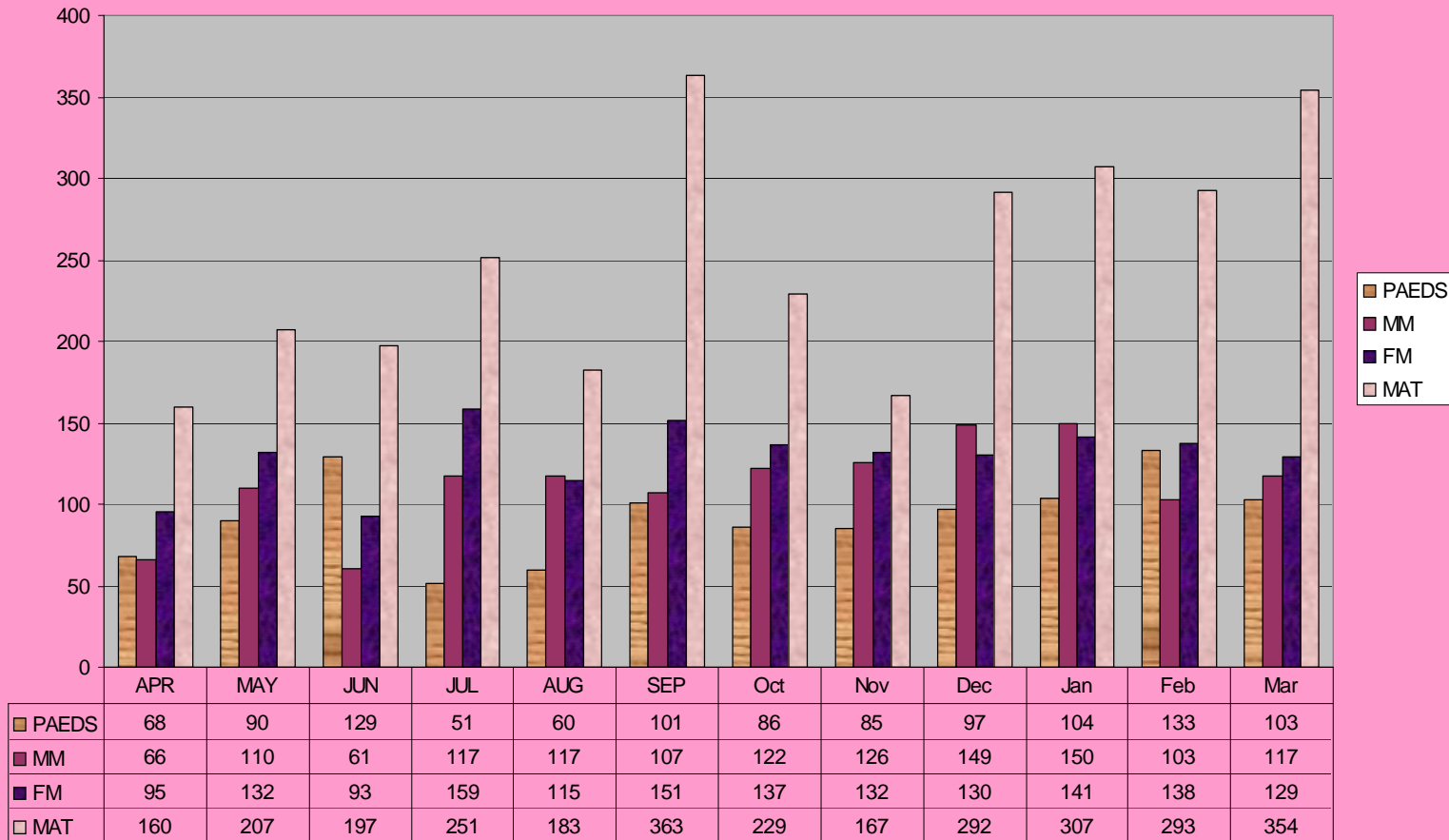
**NKONJENI HOSPITAL
THE BELOW BAR GRAPH REFLECTS OPD HEADCOUNTS
AS FROM APR '07 TO MAR '08**



**NKONJENI HOSPITAL
THE SCATTER GRAPH BELOW REFLECTS CD4'S DONE
AS FROM APR '07 TO MAR '08**



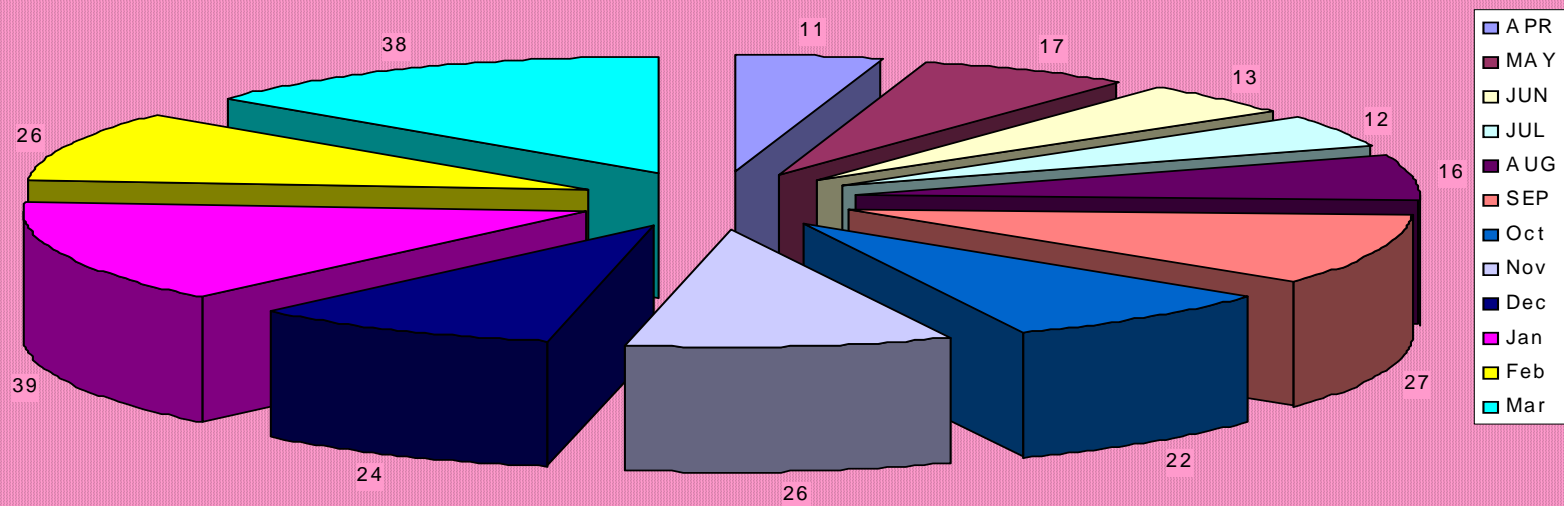
NKONJENI HOSPITAL
THE COLUMN GRAPH BELOW REFLECTS ADMISSIONS PER WARD
AS FROM APR '07 TO MAR '08



NKONJENI HOSPITAL
THE 3D COLUMN GRAPH BELOW REFLECTS INPATIENTS
DISCHARGES
PER WARD AS FROM APR'07 TO MAR'08



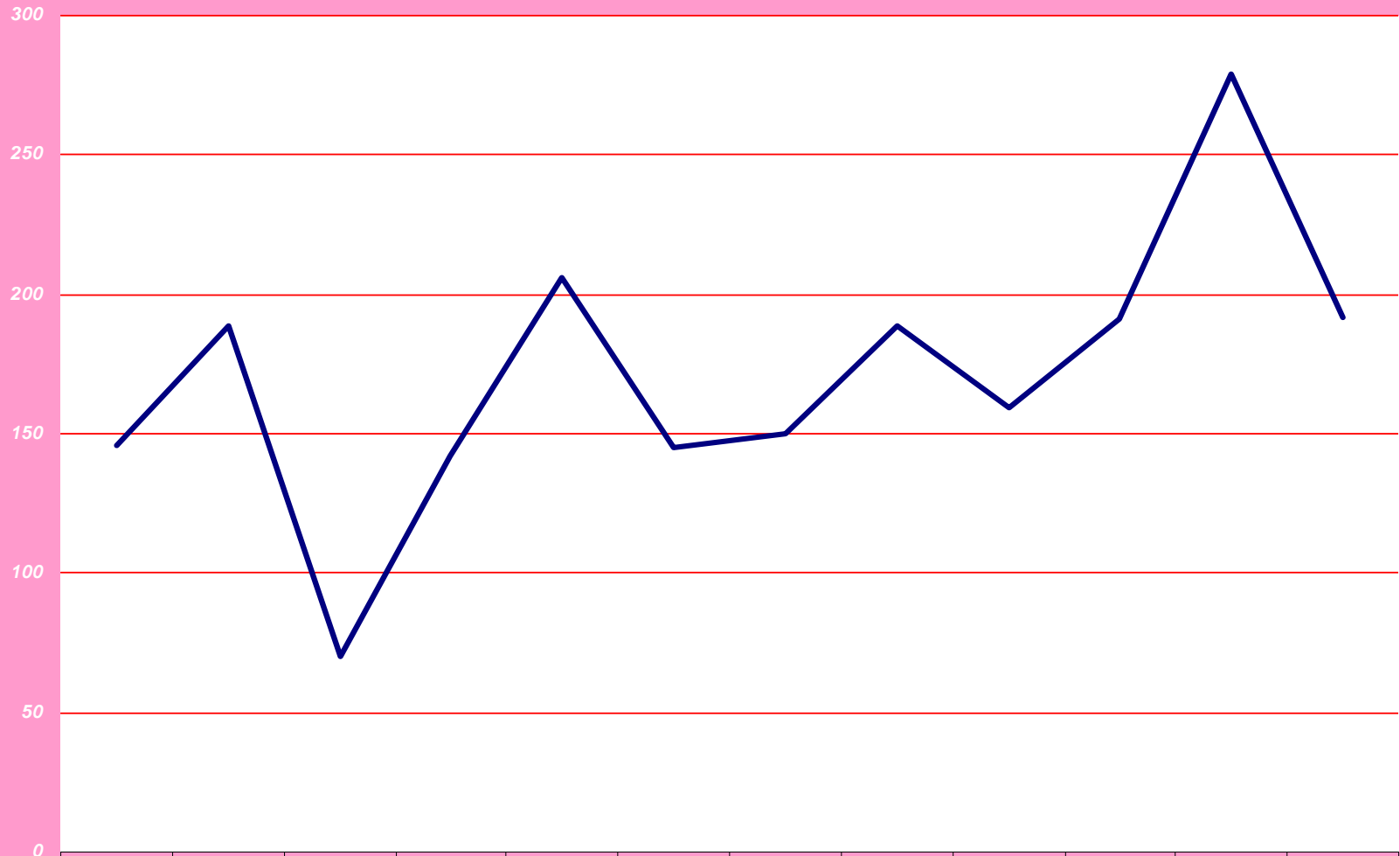
NKONJENI HOSPITAL
THE PIE CHART BELOW REFLECTS TOTAL NUMBER OF
TOP CLINIC CASES DONE AS FROM
APR'07 TO MAR'08



NKONJENI HOSPITAL
THE BUILT IN CUSTOM CHART REFLECTS PATIENTS ATTENDED
ARV PROG
AS FROM APR'07 TO MAR'08

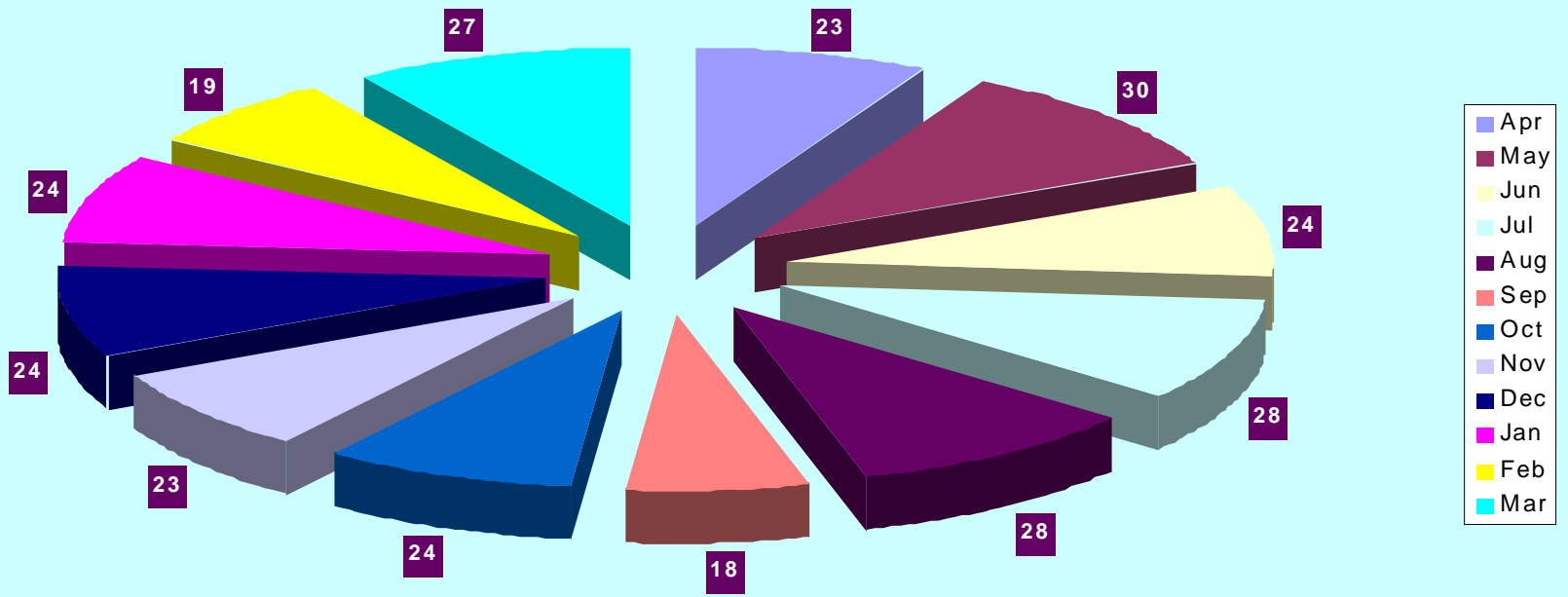


**NKONJENI HOSPITAL
BRIGHTLY COLORED LINE CHART REFLECTS VCT DONE
FROM APR'07 TO MAR'08**

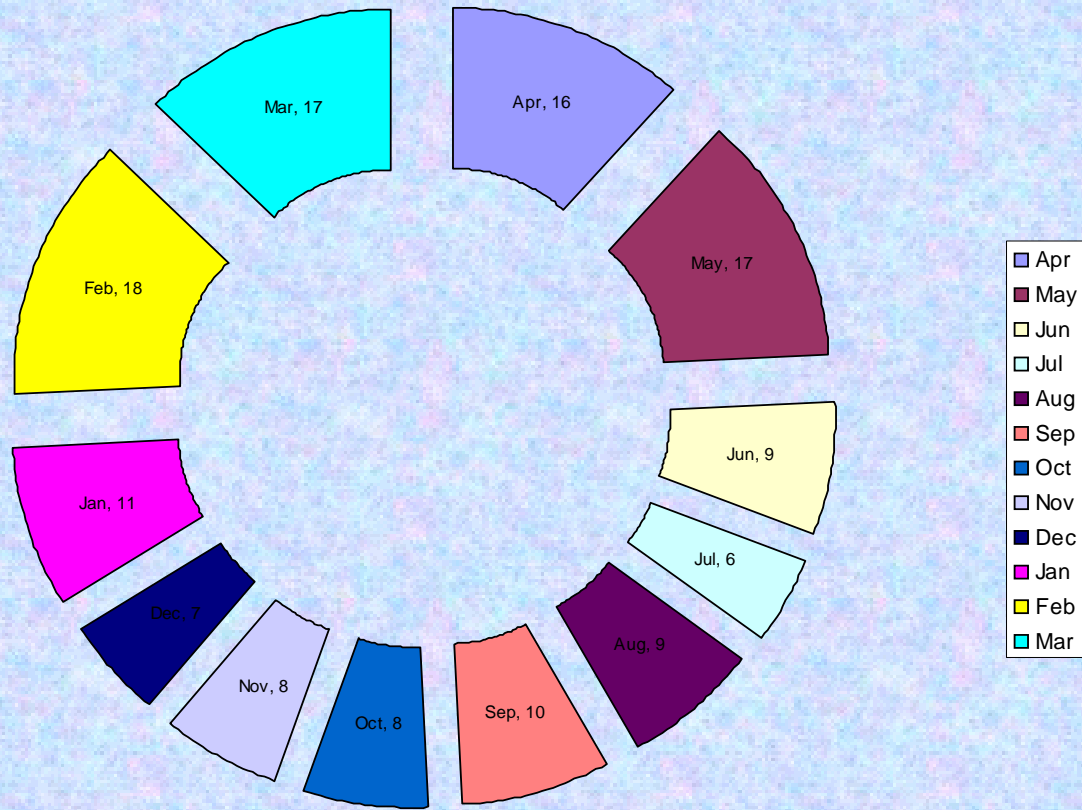


	APR	MAY	JUN	JUL	AUG	SEP	Oct	Nov	Dec	Jan	Feb	Mar
VCT	146	189	70	142	206	145	150	189	159	191	279	192

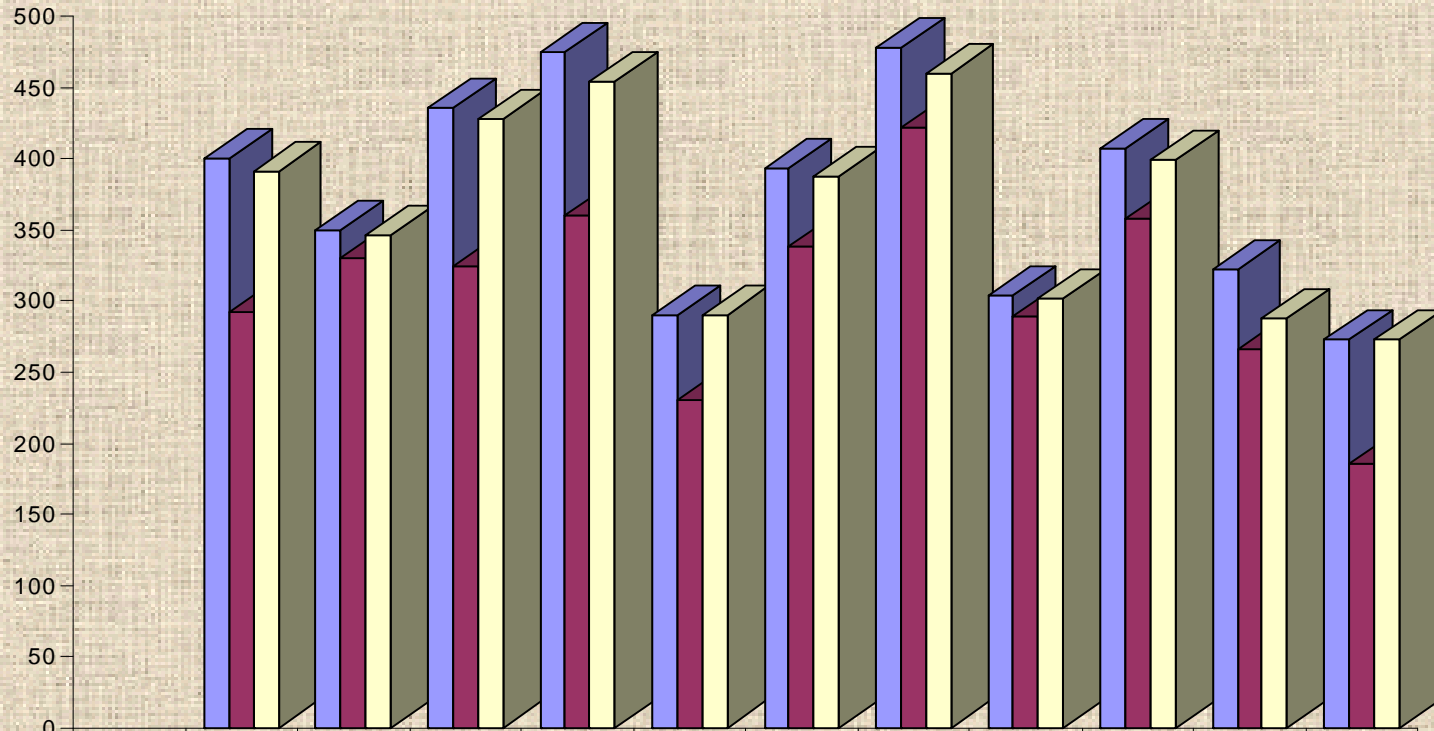
NKONJENI HOSPITAL
INPATIENT DEATHS FOR MALE MEDICAL WARD
AS FROM APR'07 TO MAR'08



**NKONJENI HOSPITAL
AN EXPLODED DOUGHNUT CHART BELOW REFLECTS
DEATHS @ FEMALE MEDICAL WARD AS FROM APR'07 TO MAR'08**

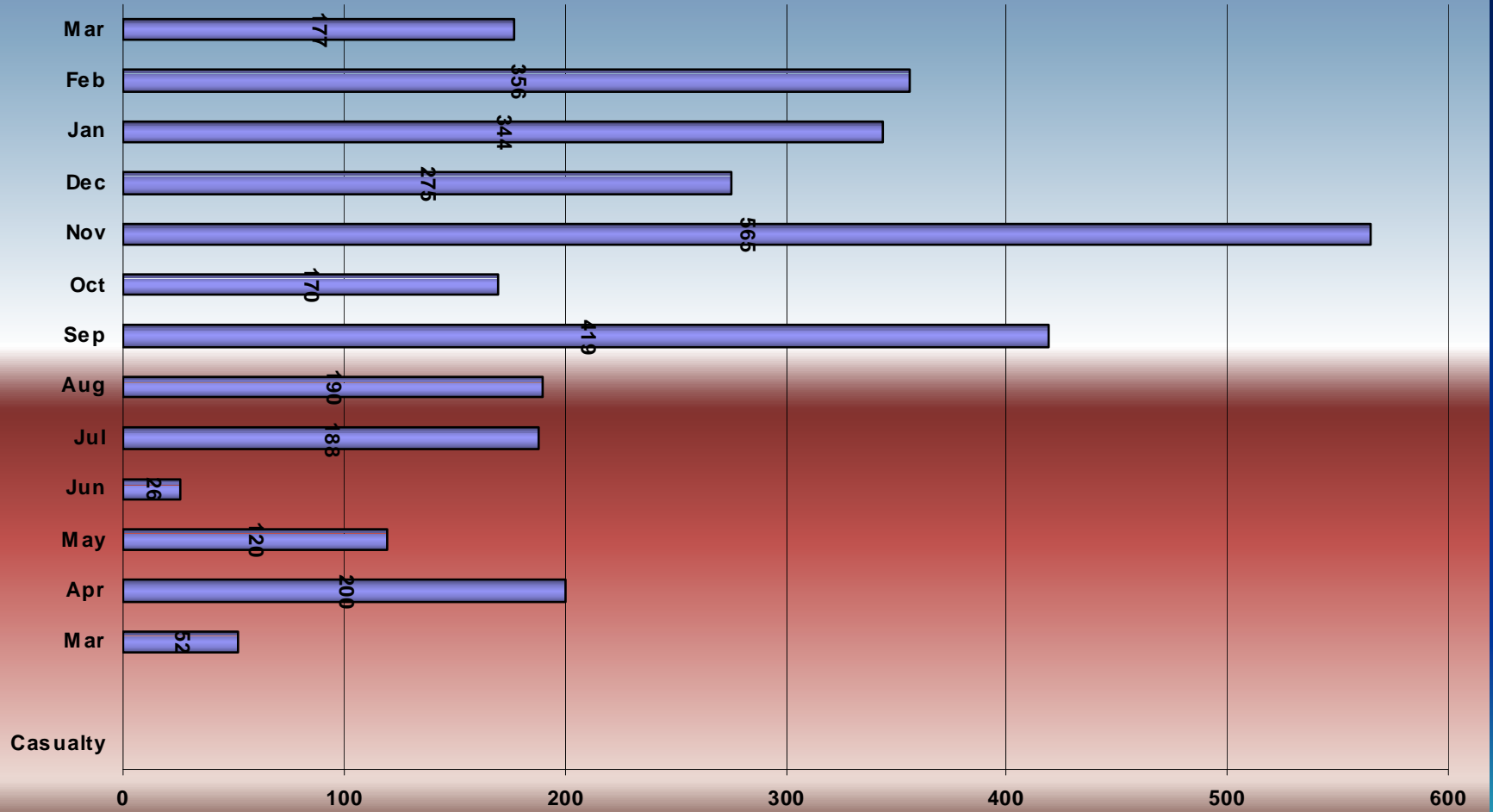


**NKONJENI HOSPITAL
THE CLUSTERED COLUMN WITH VISUAL EFFECT CHART
REFLECTS DENTAL SERVICES AS FROM
APR '07 TO MAR '08**

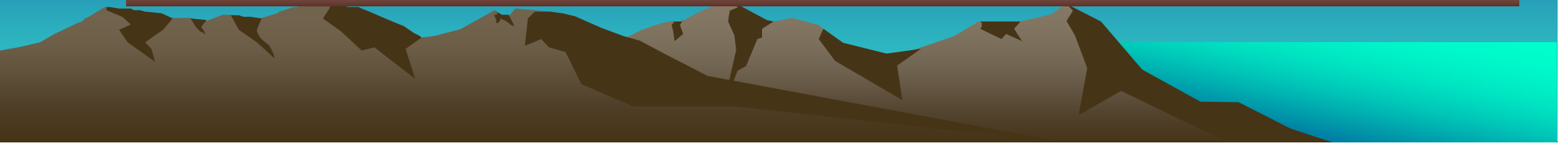


	May	Jun	Jul	Aug	Sep	Oct	Nov	Dec	Jan	Feb	Mar
ORAL HEADCOUNT	400	350	436	475	290	394	479	304	407	322	273
EXTRACTIONS	293	330	325	360	230	338	422	289	358	266	186
ORAL HYGIENE INSTR	391	347	428	454	290	388	460	302	399	288	273

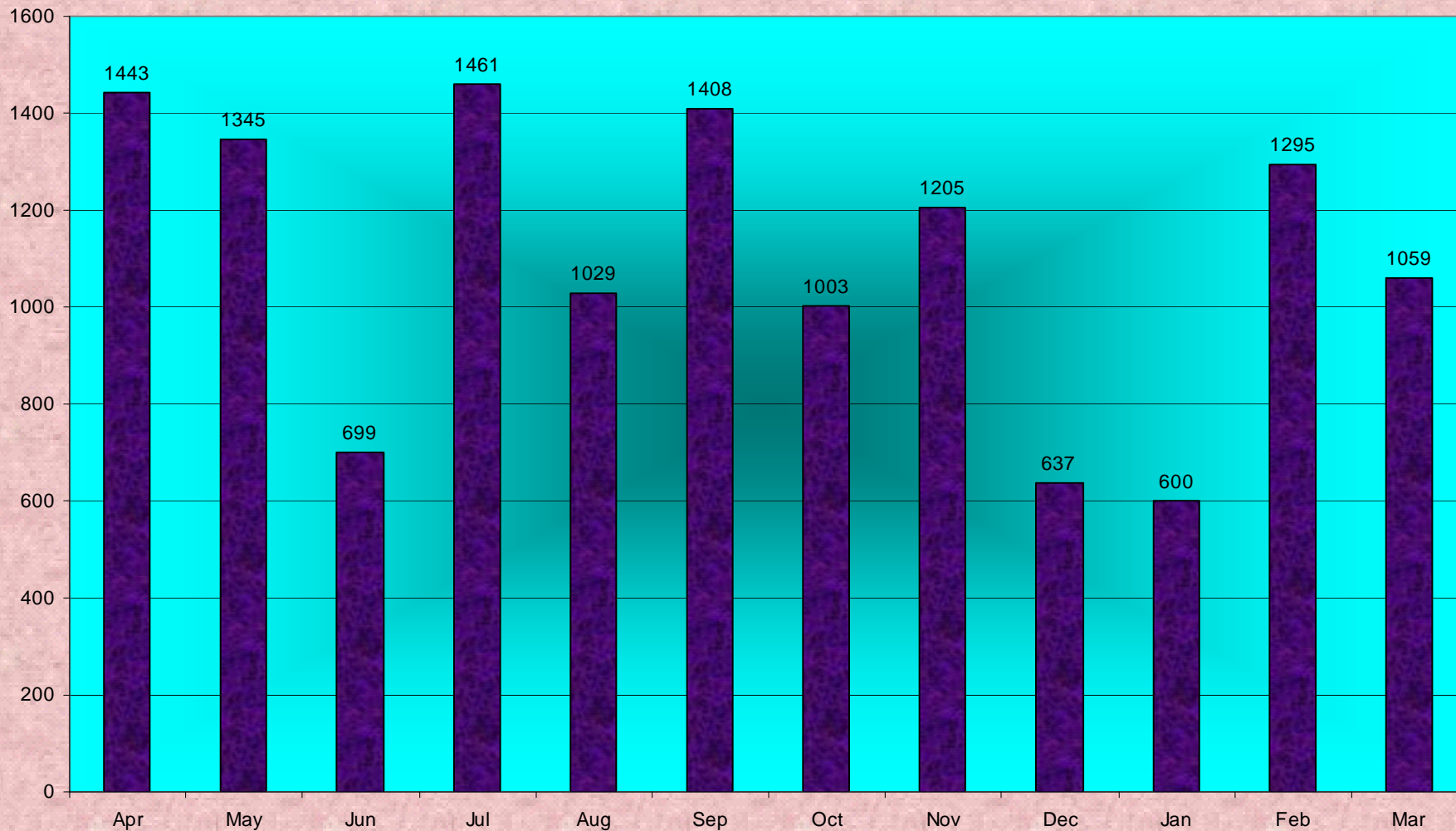
NKONJENI HOSPITAL
A STACKED BAR CHART BELOW REFLECTS CASUALTY HEACOUNTS
AS FROM APR'07 TO MAR'08



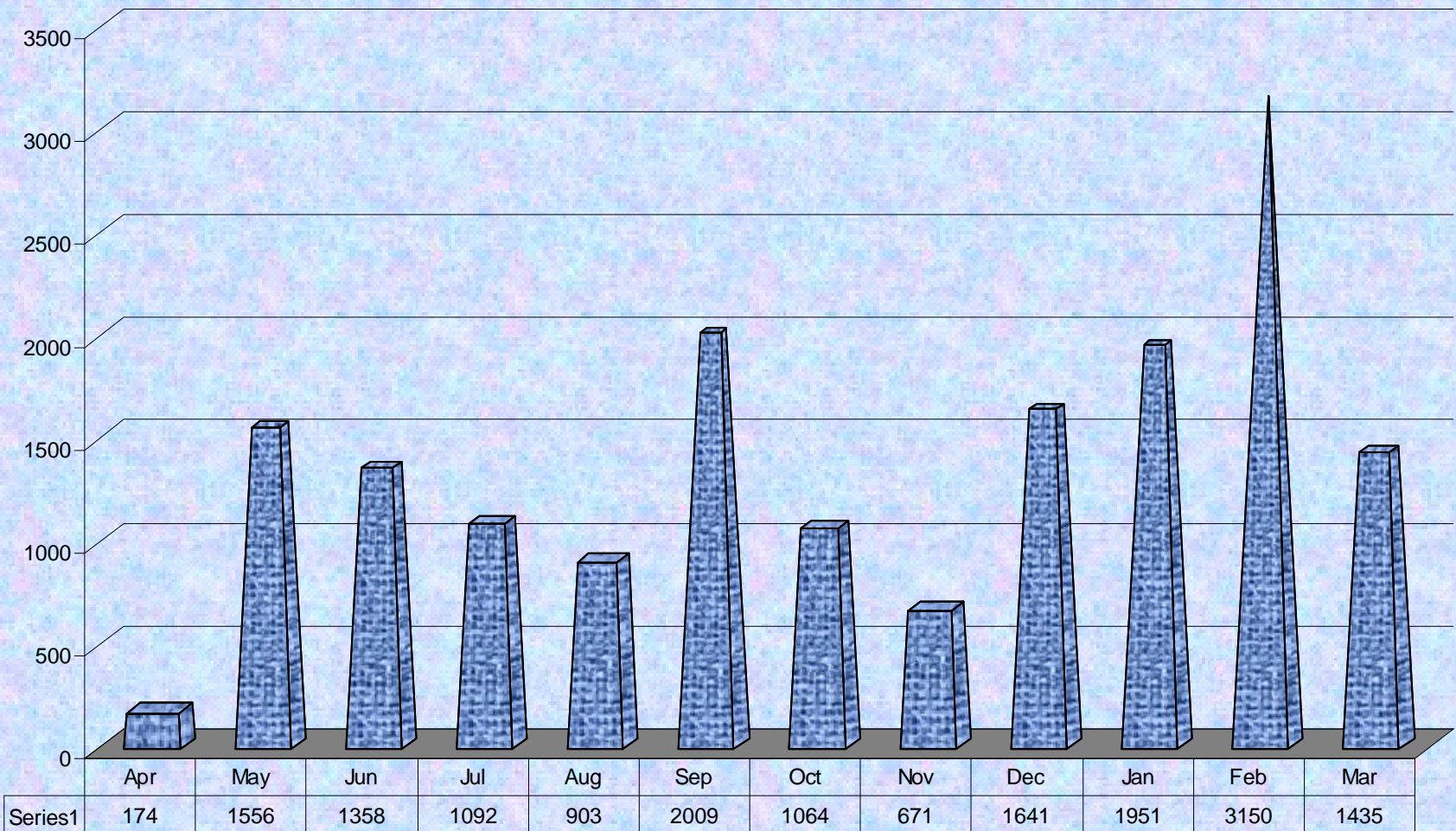
Casualty



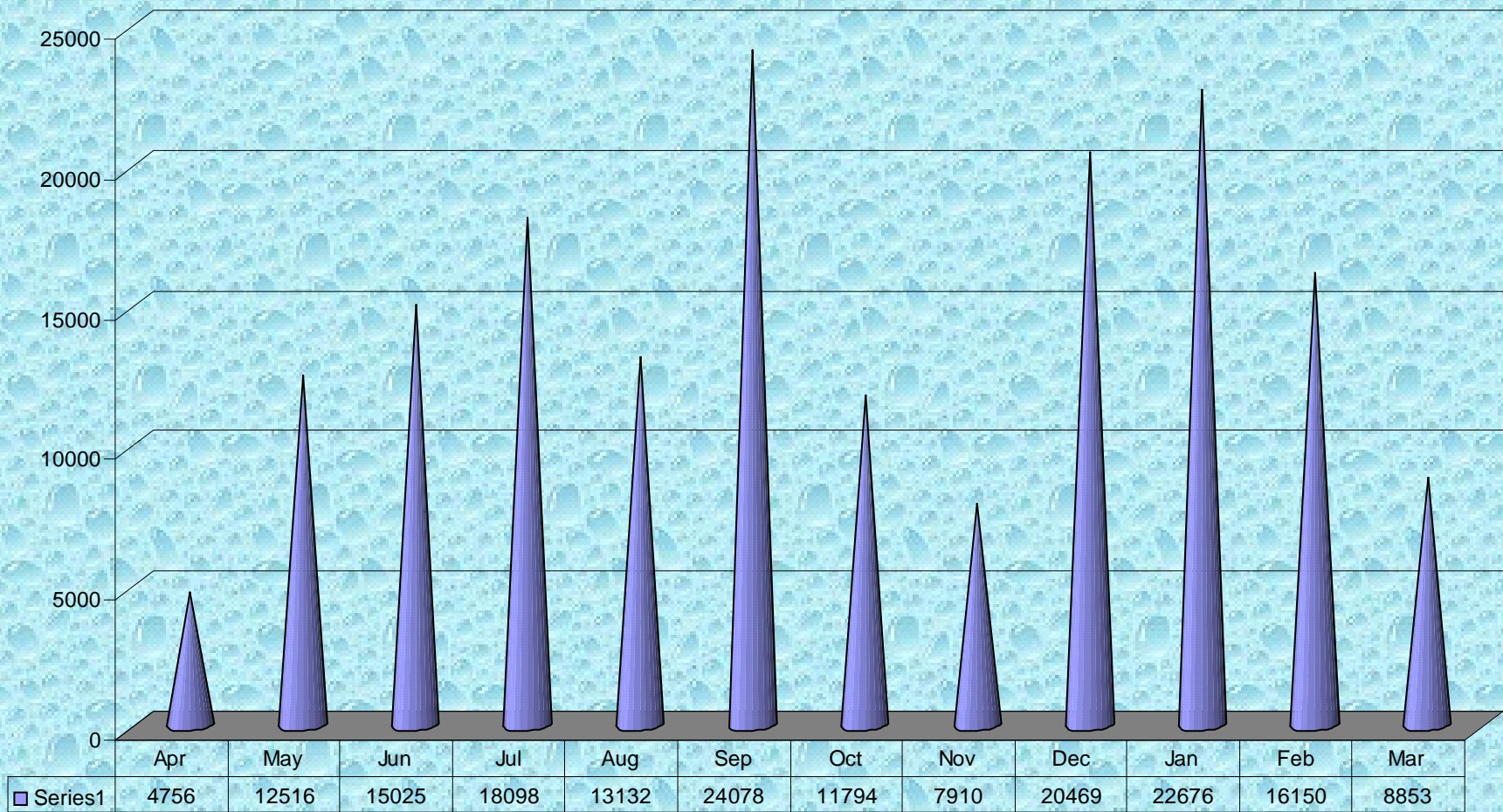
NKONJENI HOSPITAL
THE COLUMN GRAPH BELOW REFLECTS
X- RAYS DONE AS FROM APR'07 TO MAR'08



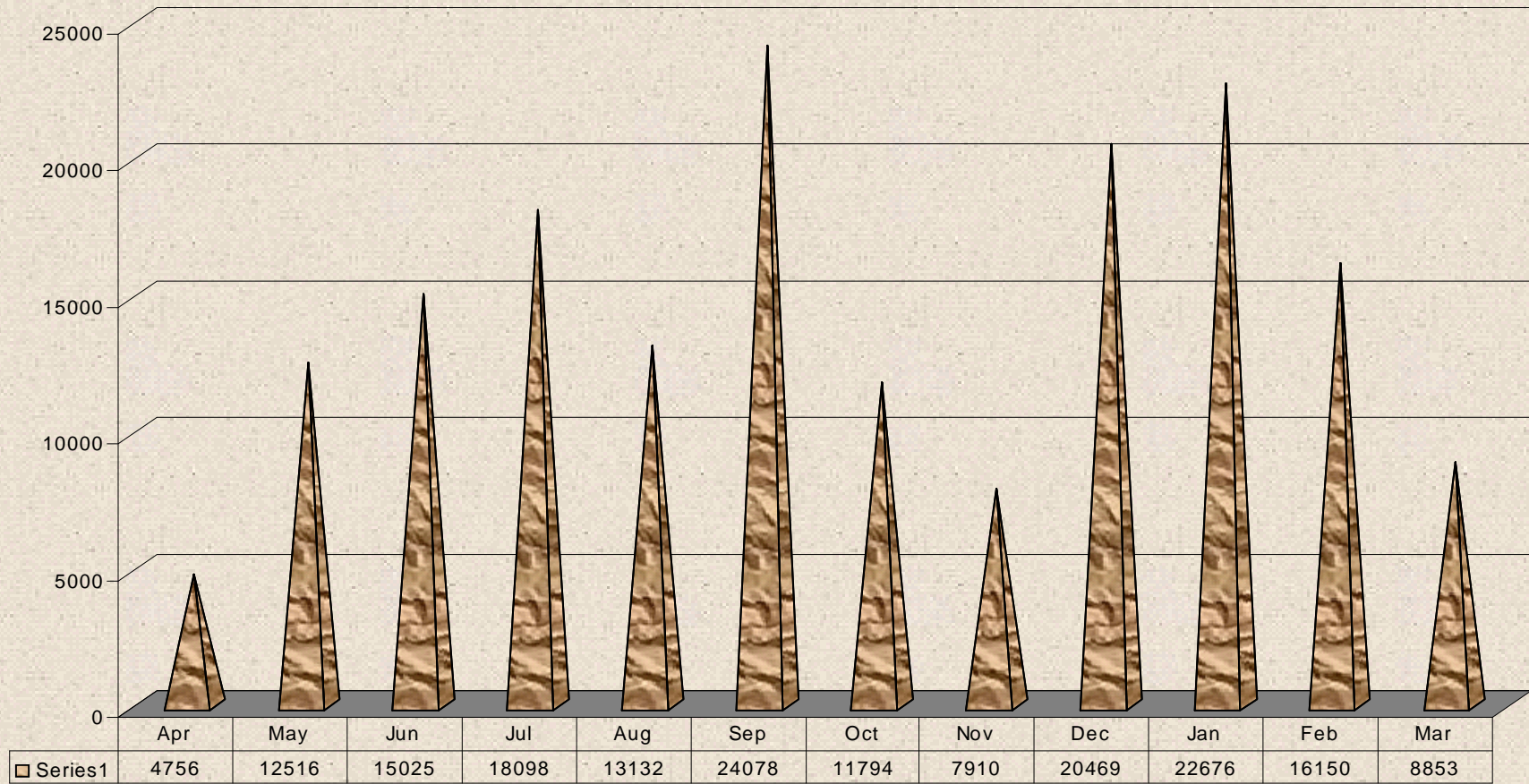
**NKONJENI HOSPITAL
A STACKED COLUMN CHART WITH CONICAL SHAPE REFLECTS
LABORATORY SPECIMEN TAKEN INSIDE HOSP
AS FROM APR'07 TO MAR '08**



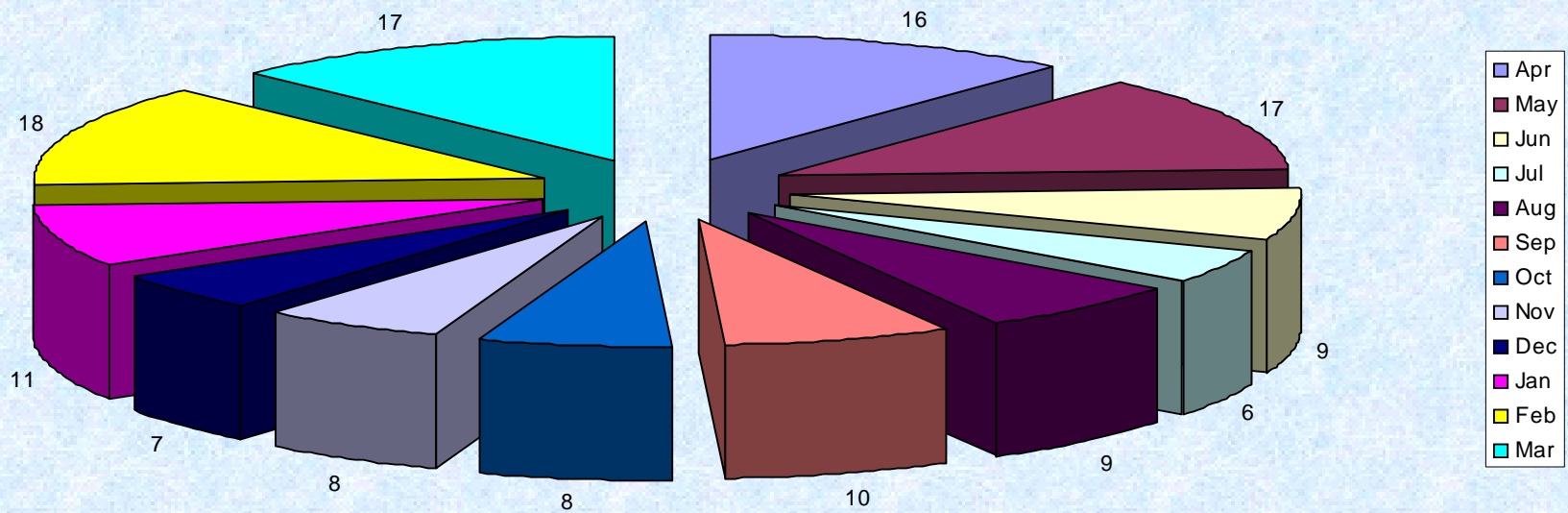
**NKONJENI HOSPITAL
A STACKED COLUMN CHART WITH CONICAL SHAPE REFLECTS
LABORATORY TOTAL SPECIMEN TAKEN @ HOSP
AS FROM APR'07 TO MAR '08**



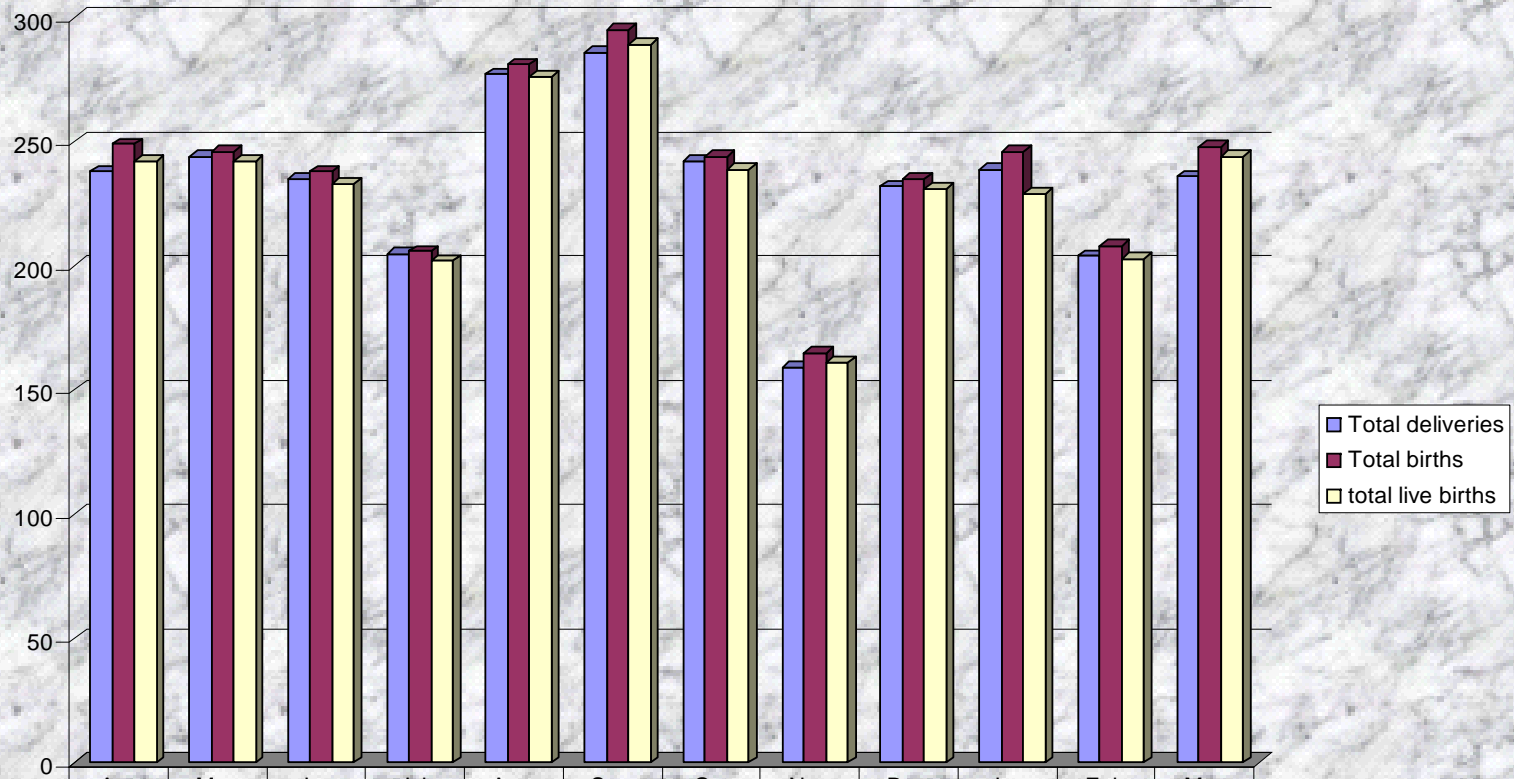
NKONJENI HOSPITAL
A STACKED COLUMN CHART WITH CONICAL SHAPE REFLECTS
LABORATORY TOTAL TESTS
AS FROM APR'07 TO MAR '08



**NKONJENI HOSPITAL
AN EXPLODED PIE CHART WITH 3-D VIEW REFLECTS DEATHS @ PAEDS WARD
AS FROM APR'07 TO MAR'08**

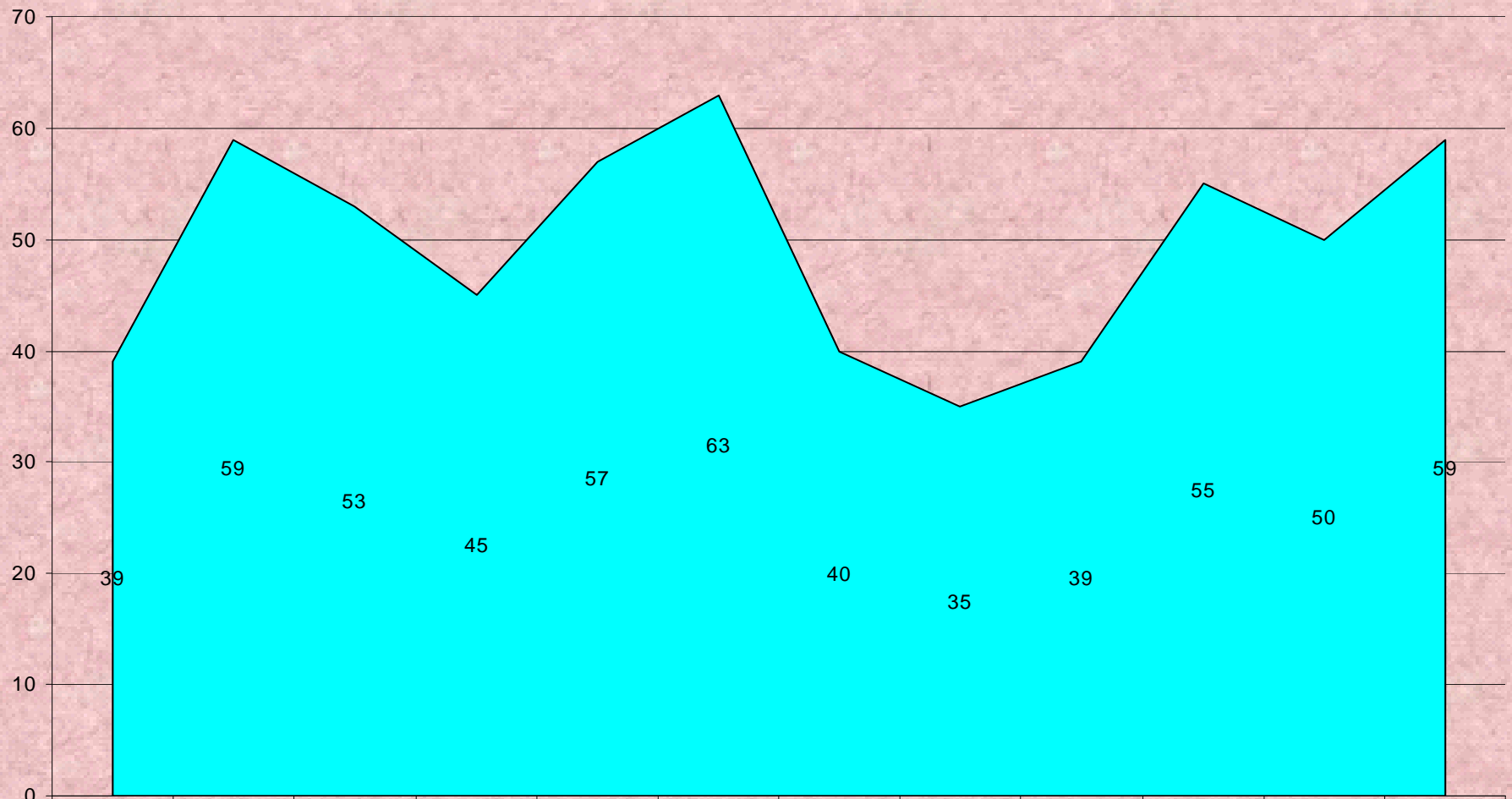


NKONJENI HOSPITAL
A CLUSTERED COLUMN CHART BELOW REFLECTS DELIVERIES,BIRTHS
AS FROM APR'07 TO MAR'08



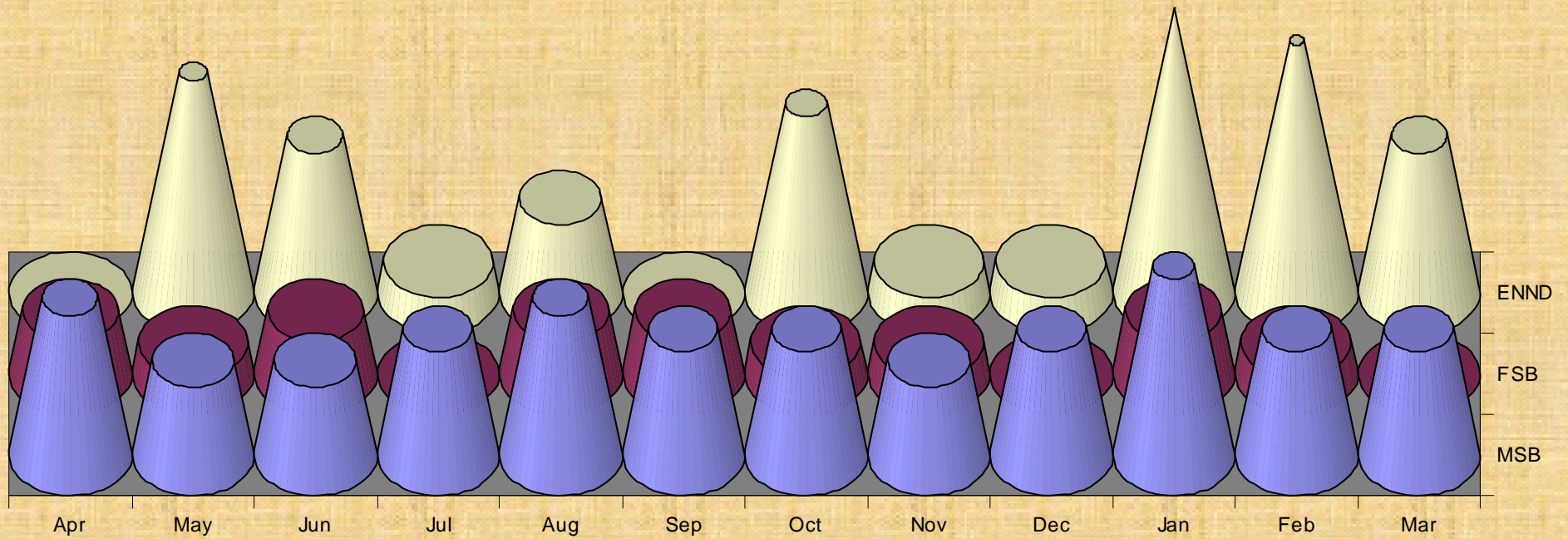
	Apr	May	Jun	Jul	Aug	Sep	Oct	Nov	Dec	Jan	Feb	Mar
Total deliveries	238	244	235	205	277	286	242	159	232	239	204	236
Total births	249	246	238	206	281	295	244	165	235	246	208	248
total live births	242	242	233	202	276	289	239	161	231	229	203	244

NKONJENI HOSPITAL
AN AREA CHART BELOW REFLECTS NUMBER OF CEASERS DONE
AS FROM APR'07 TO MAR'08



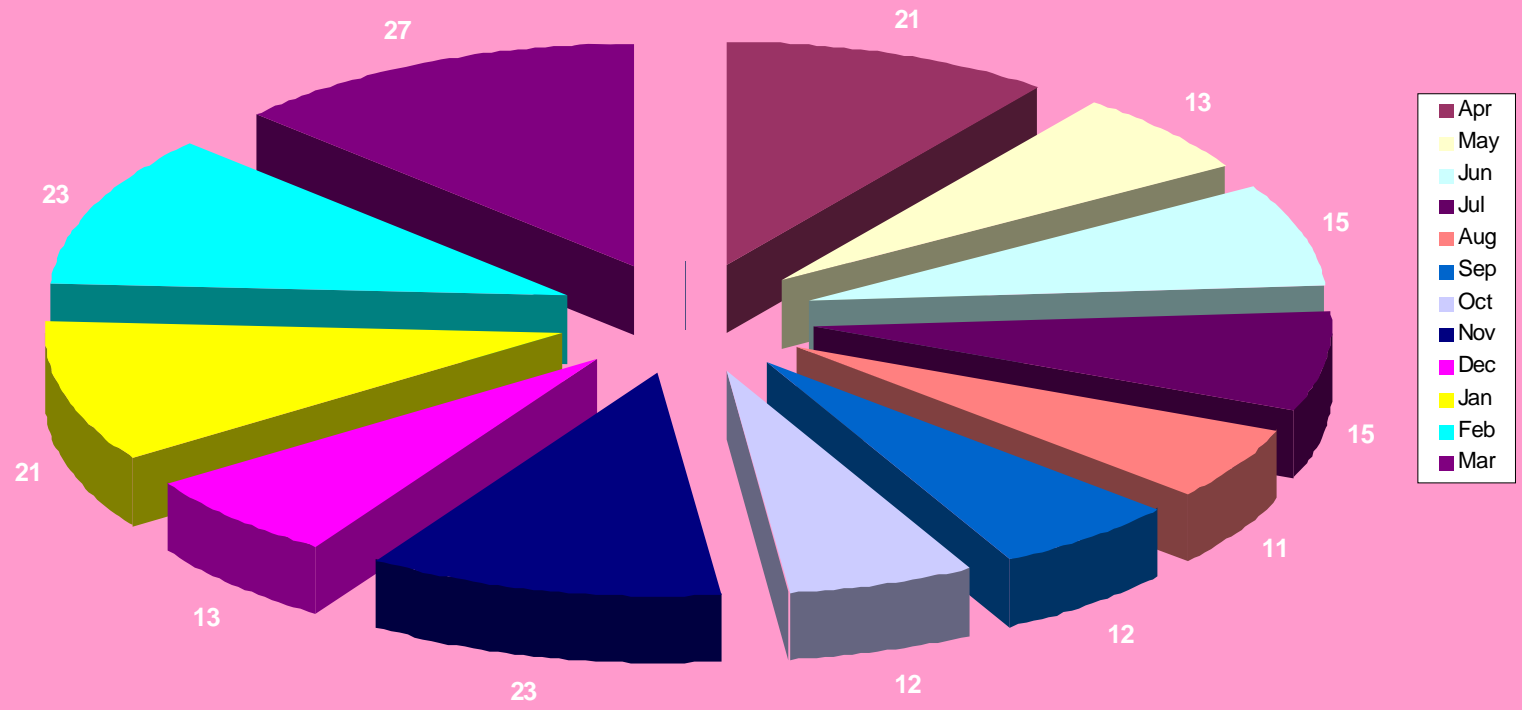
Series1	Apr	May	Jun	Jul	Aug	Sep	Oct	Nov	Dec	Jan	Feb	Mar
	39	59	53	45	57	63	40	35	39	55	50	59

NKONJENI HOSPITAL
A FIELD OF 3-D CONES CHART REFLECTS PERINATAL MORTALITY
AS FROM APR'07 TO MAR'08

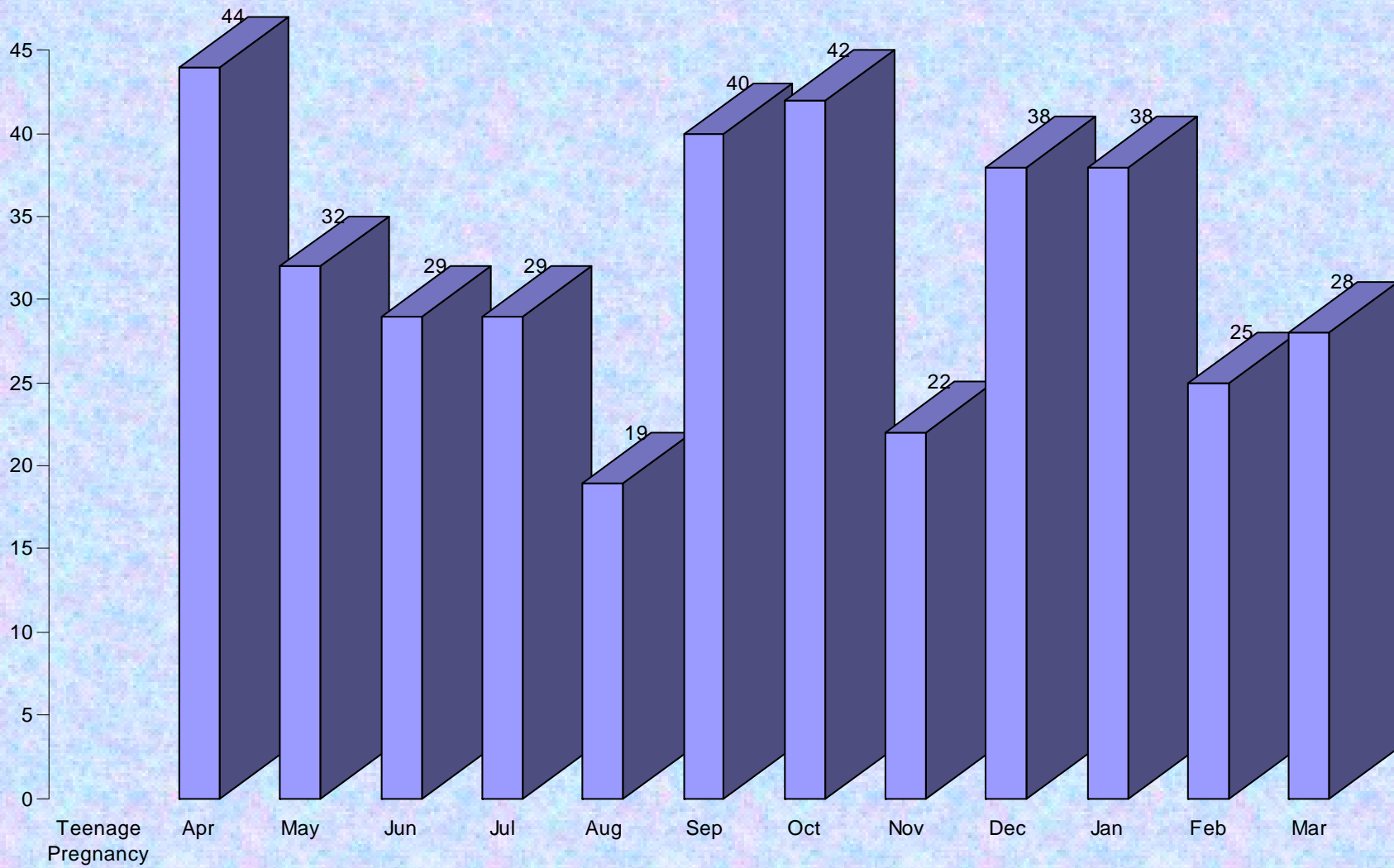


	Apr	May	Jun	Jul	Aug	Sep	Oct	Nov	Dec	Jan	Feb	Mar
■ MSB	5	3	3	4	5	4	4	3	4	6	4	4
■ FSB	2	1	2	0	2	2	1	1	0	2	1	0
□ ENND	0	7	5	1	3	0	6	1	1	9	8	5

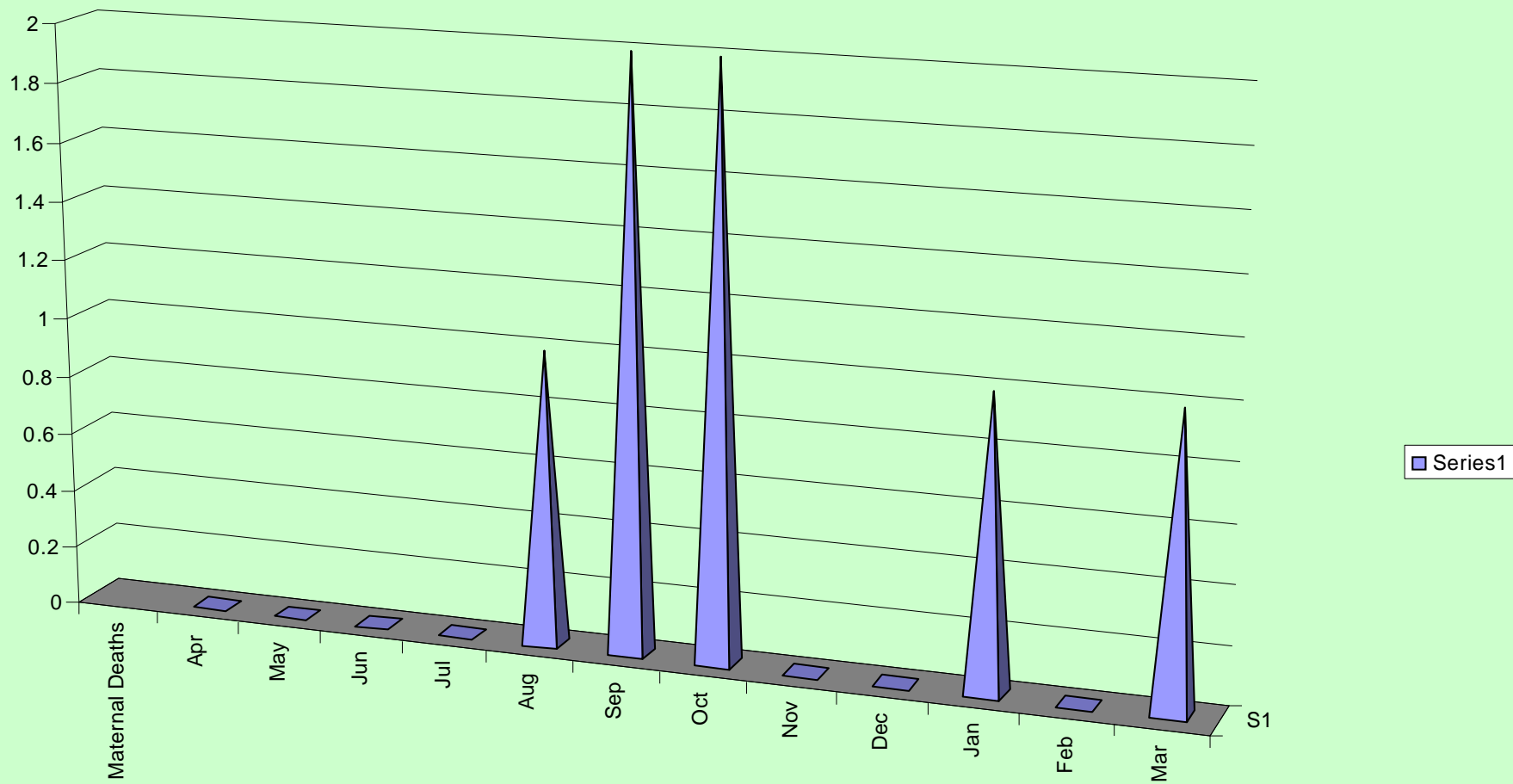
NKONJENI HOSPITAL
A 3-D EXPLODED PIE CHART BELOW REFLECTS LOW BIRTH WEIGHT
AS FROM APR'07 TO MAR'08



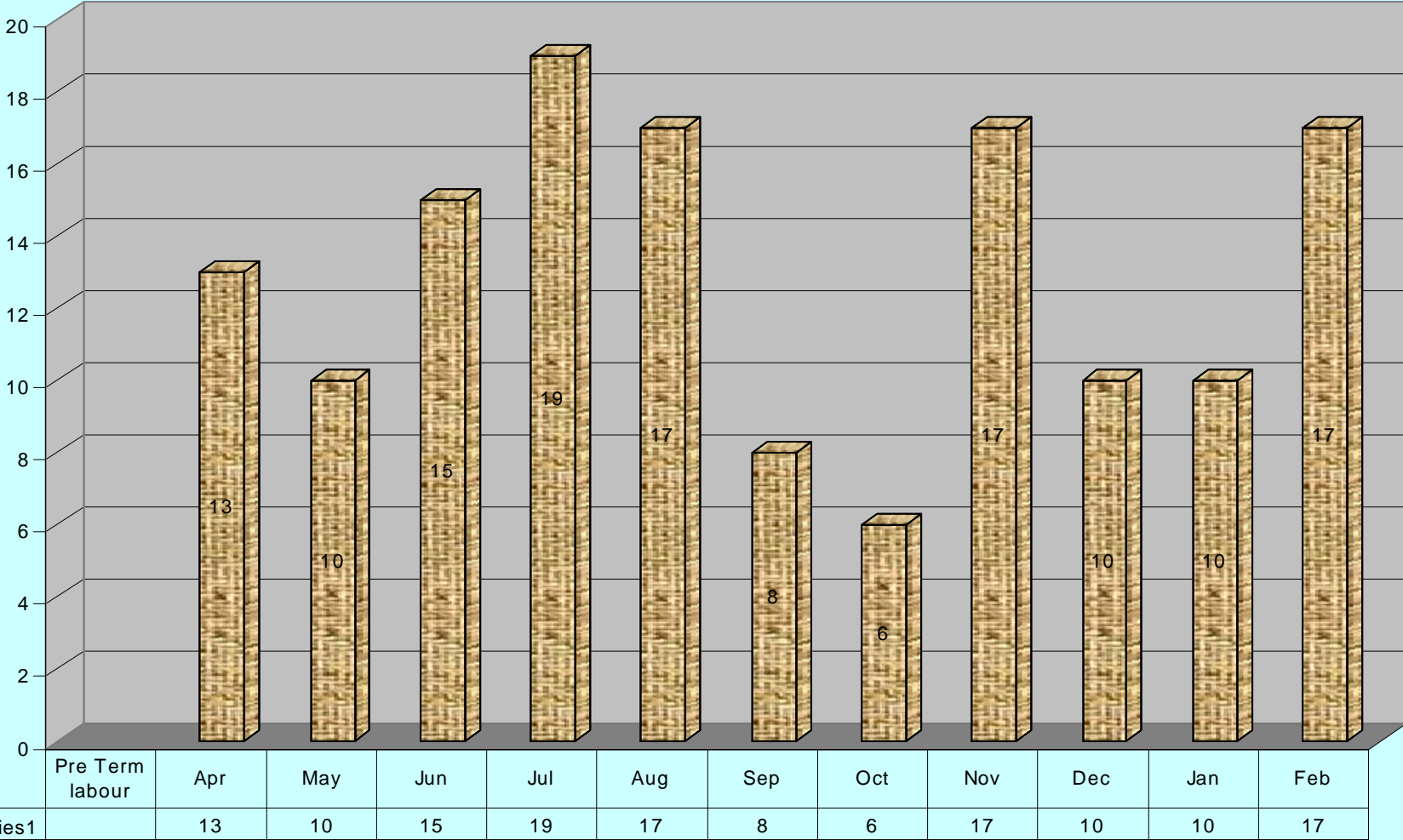
NKONJENI HOSPITAL
A 3-D COLUMN CHART BELOW REFLECTS TEENAGE PREGNANCY
AS FROM APR'07 TO MAR'08



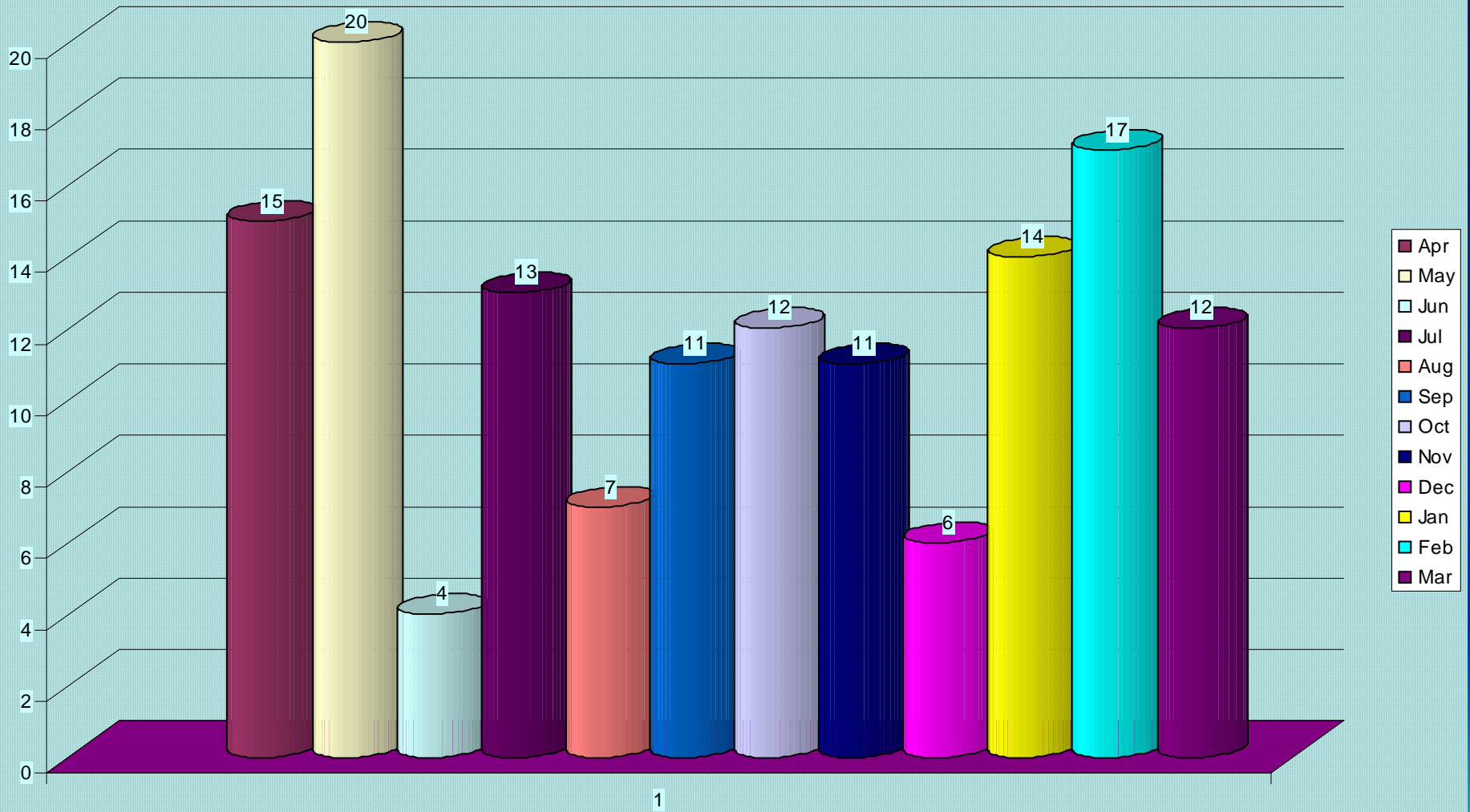
NKONJENI HOSPITAL
A PYRAMID CHART BELOW REFLECTS MATERNAL DEATHS
AS FROM APR '07 TO MAR '08



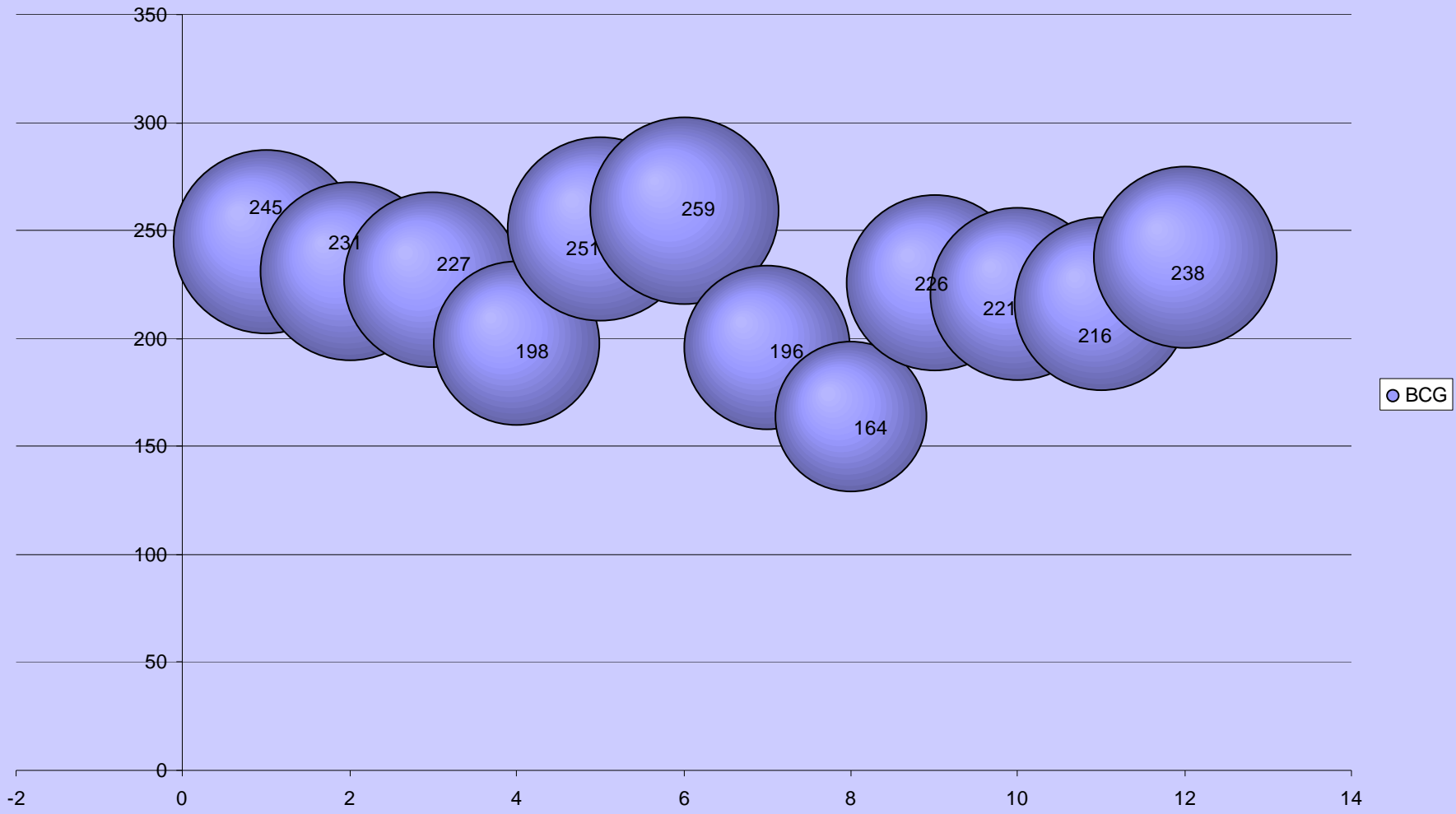
**NKONJENI HOSPITAL
 STACKED COLUMN CHART BELOW REFLECTS PRE TERM LABOUR
 AS FROM APR'07 - MAR'08**



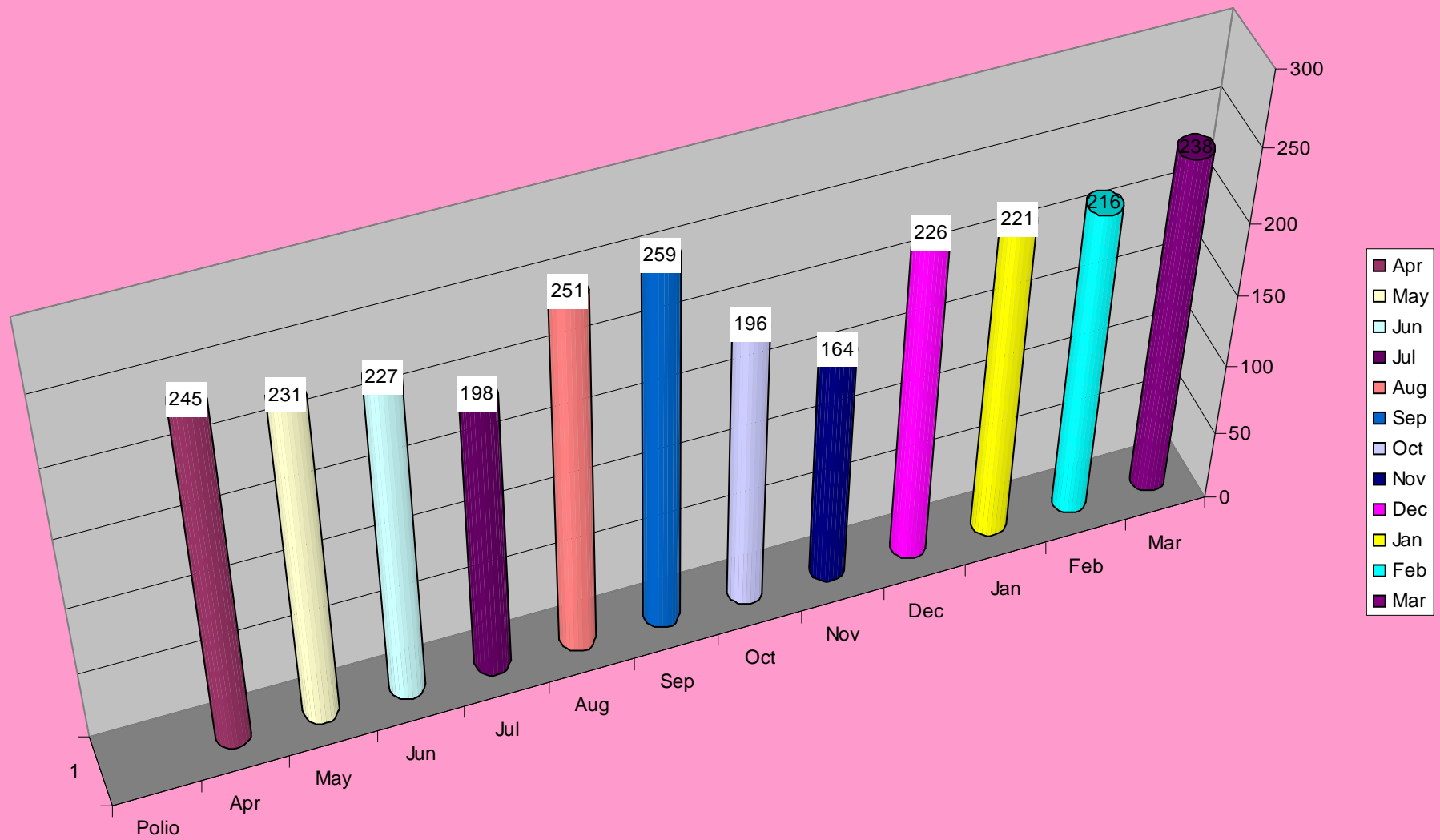
NKONJENI HOSPITAL
A COLUMN CHART WITH CYLINDRICAL SHAPE REFLECTS BORN BEFORE ARRIVAL
AS FROM APR'07 TO MAR'08



NKONJENI HOSPITAL
A BUBBLE CHART BELOW REFLECTS BCG GIVEN AT BIRTH
AS FROM APR '07 TO MAR '08



NKONJENI HOSPITAL
A CYLINDER CHART BELOW REFLECTS POLIO VACCINE AT BIRTH
AS FROM APR'07 TO MAR'08



**NKONJENI HOSPITAL
A CLASSIC COMBINATION CHART BELOW REFLECTS NVP
GIVEN TO BABIES AND MOTHERS
AS FROM APR'07 TO MAR'08**

