

SharePoint

Perumal Collin - ?



KZN Health Intranet

KZN HEALTH

- HOME
- CORPORATE INFORMATION
- COMPONENTS
- DIRECTORY
- DISTRICT OFFICES
- HEALTH FACILITIES

KZN Health > Components > Supply Chain Management

AdvertQuote



Quotation Advert

Opening Date: 2021-08-10

Closing Date: 2021-08-17

Closing Time: 11:00

INSTITUTION DETAILS

Institution Name: Grey's hospital

Province: KwaZulu-Natal

Department or Entity: Department of Health

Division or section: Central Supply Chain Management

Place where goods / services is required: Grey's Hospital

Date Submitted: 2021-08-10

ITEM CATEGORY AND DETAILS

Quotation Number: ZNQ: GRS 1074/07/21

Item Category: Goods

Item Description: PPE: Supply SABS approved Conti suits 65/35% cotton mix. Colour: Navy Blue. Size: Top- large and trousers size 38

Quantity (if supplies): 3 sets (Top- L and Trouser- 38)

COMPULSORY BRIEFING SESSION / SITE VISIT

Select Type: Not Applicable

Date:

Time:

Venue:

QUOTES CAN BE COLLECTED FROM: Departmental website

QUOTES SHOULD BE DELIVERED TO: Grey's Hospital, 201 Townbush Road, PMB,3201

ENQUIRIES REGARDING THE ADVERT MAY BE DIRECTED TO:

Name: Pearl Msomi

Email: NO EMAIL

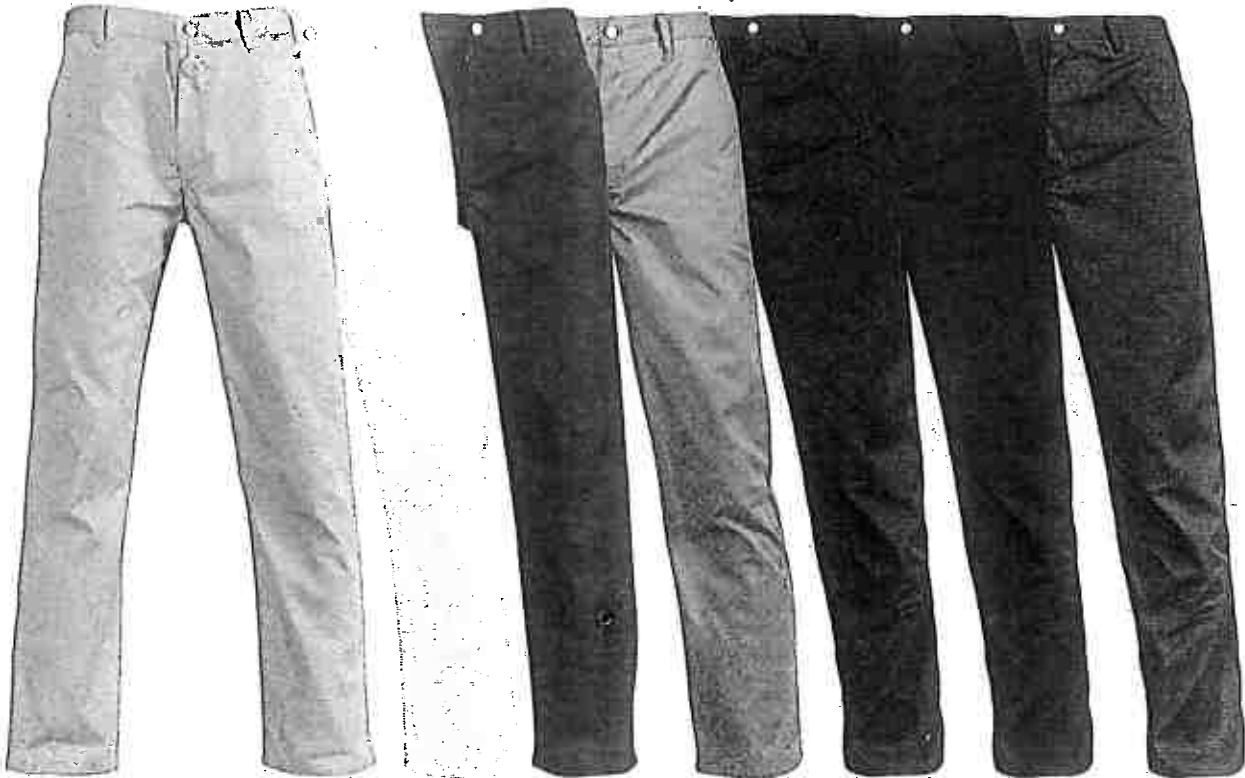
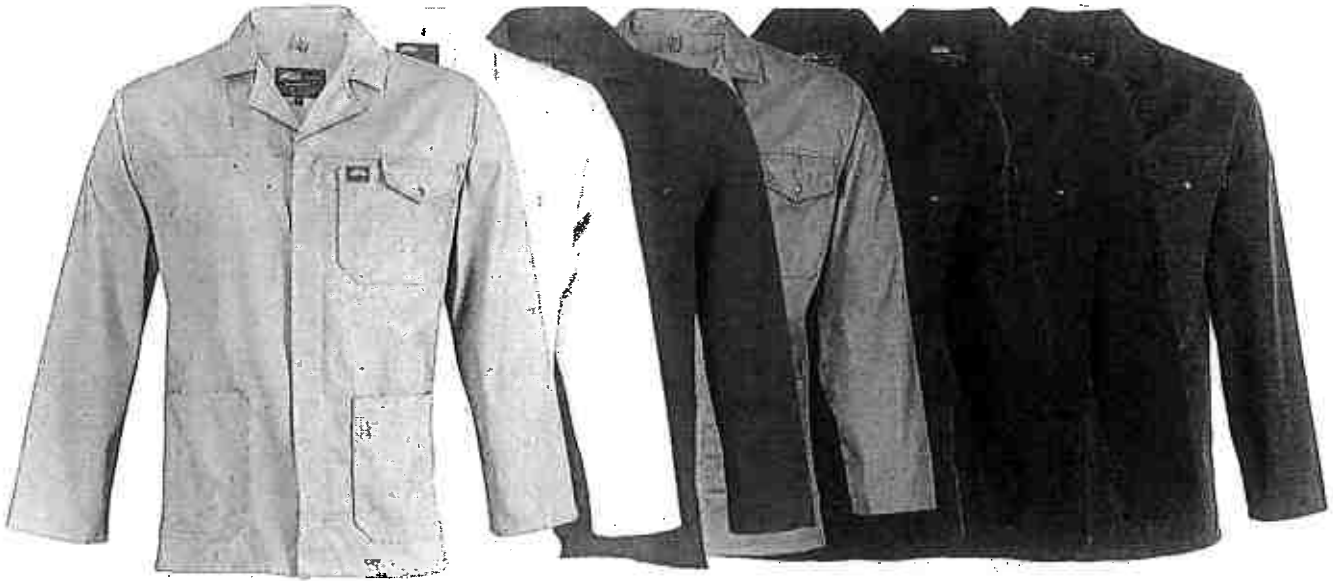
Contact Number: 033 897 3482

Finance Manager Name: Mrs B.G Anderson

Finance Manager Signature:

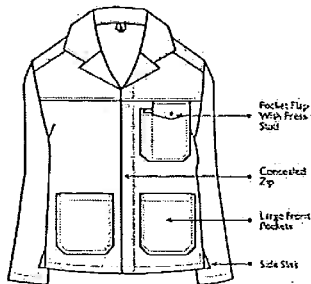
No late quotes will be considered

GRS 1074/07/21



CONTI JACKET/20106

FABRIC: VERSATEX 65/35 Polycotton Twill
WEIGHT: 230 gm²
SIZES: S M L XL 2XL 3XL 4XL
COLOURS: Royal Orange, Black, Bottle, Olive, Red, Navy, Khaki, White, Emerald, Grey, Chocolate, Burgundy, Charcoal
 Chest pocket with press stud closure and pen division / Large front pockets for convenient storage / Concealed YKK Zip / Side slits for ease of movement / Bar tacks on stress points for extra strength



CONTI TROUSERS/20101

FABRIC: VERSATEX 65/35 Polycotton Twill
WEIGHT: 230 gm²
SIZES: 28 30 32 34 36 38 40 42 44 46 48 50
COLOURS: Royal Orange, Black, Bottle, Olive, Emerald, Red, Navy, Khaki, White, Grey, Chocolate, Burgundy, Charcoal
 Half elasticised waistband for comfort / Metal shank button closure / Back pocket / Triple needle stitching on inner leg and back rise / Slant pockets with deep self fabric pockets / Concealed YKK zip / Bar tacks on stress points for extra strength

