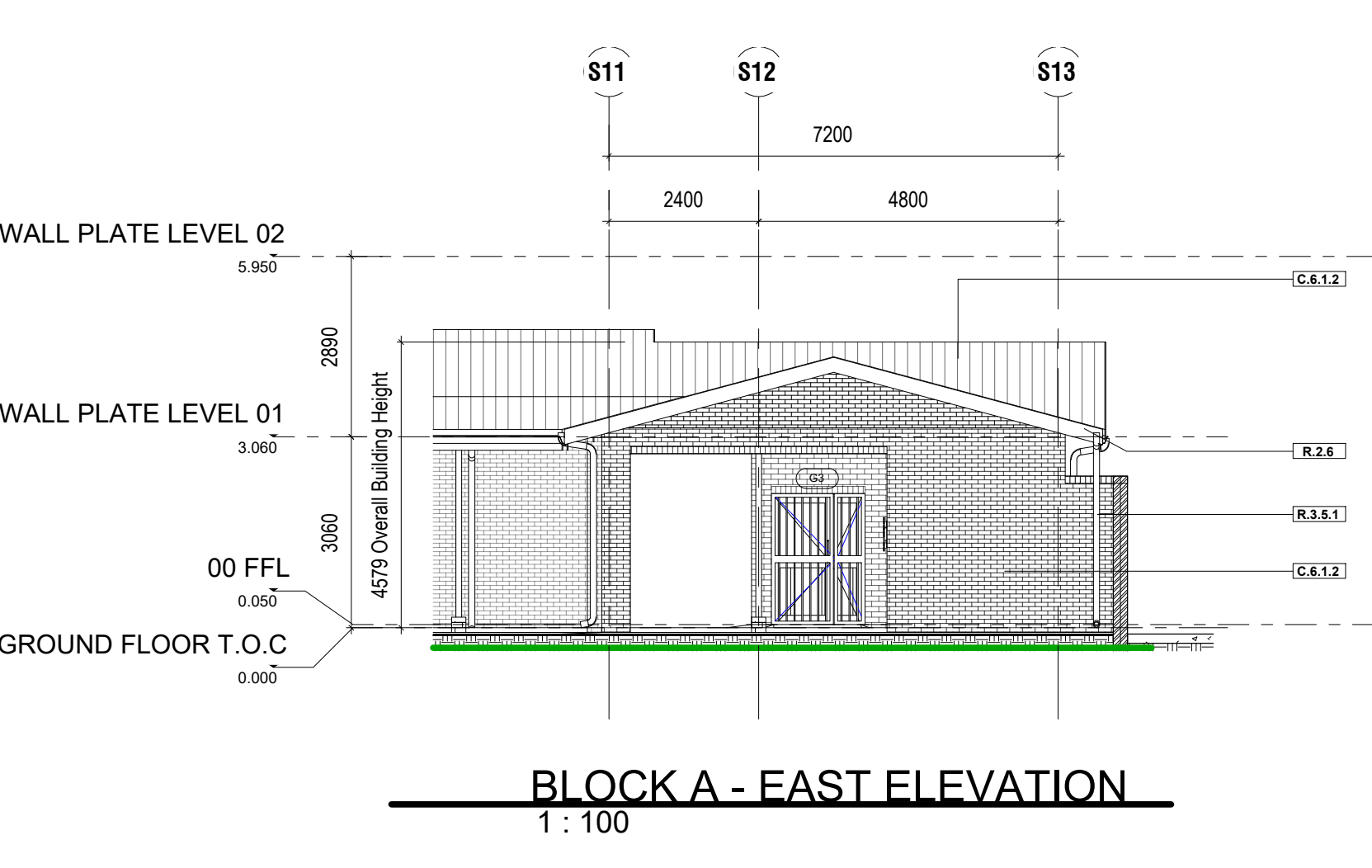
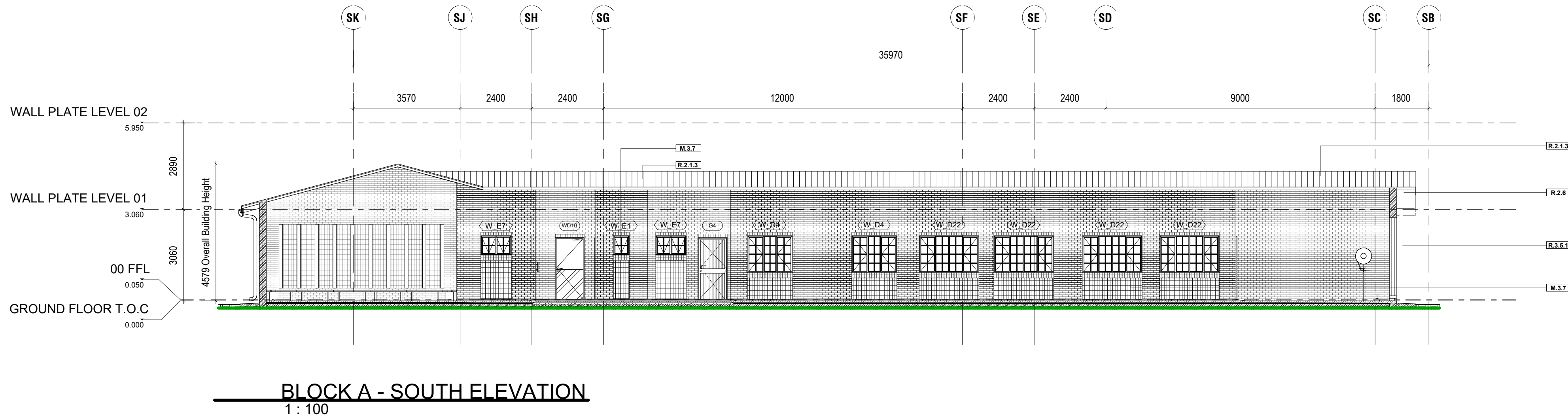
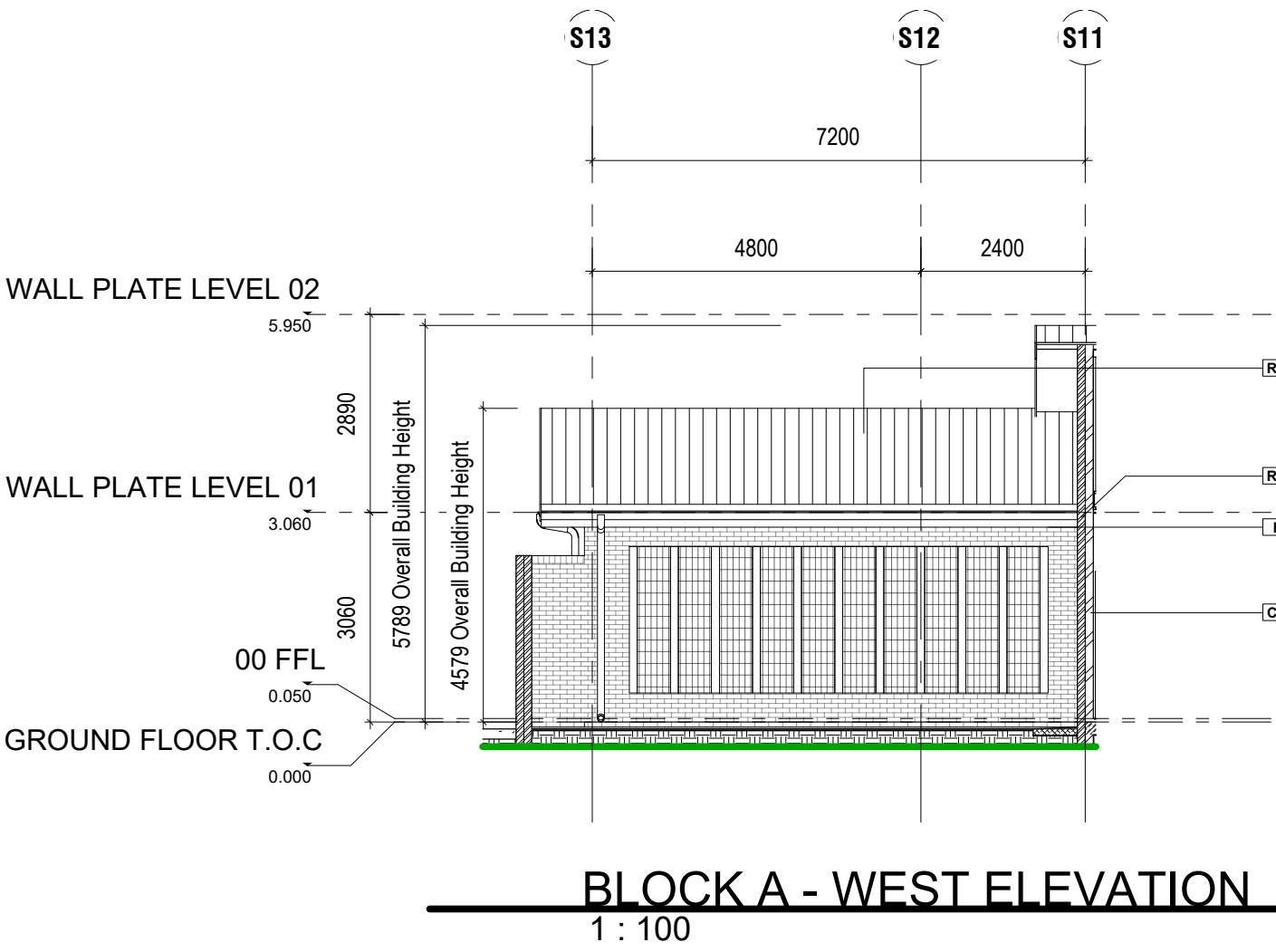
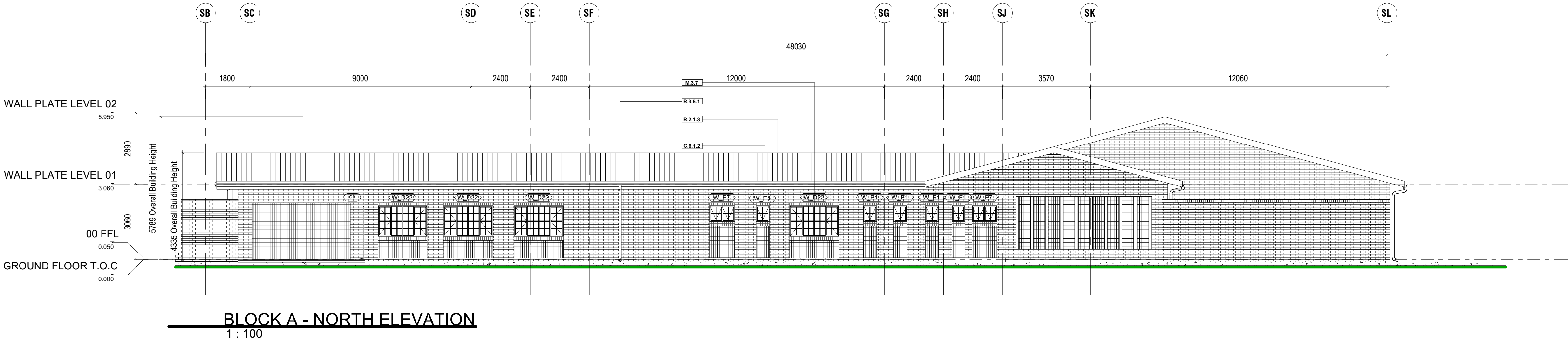
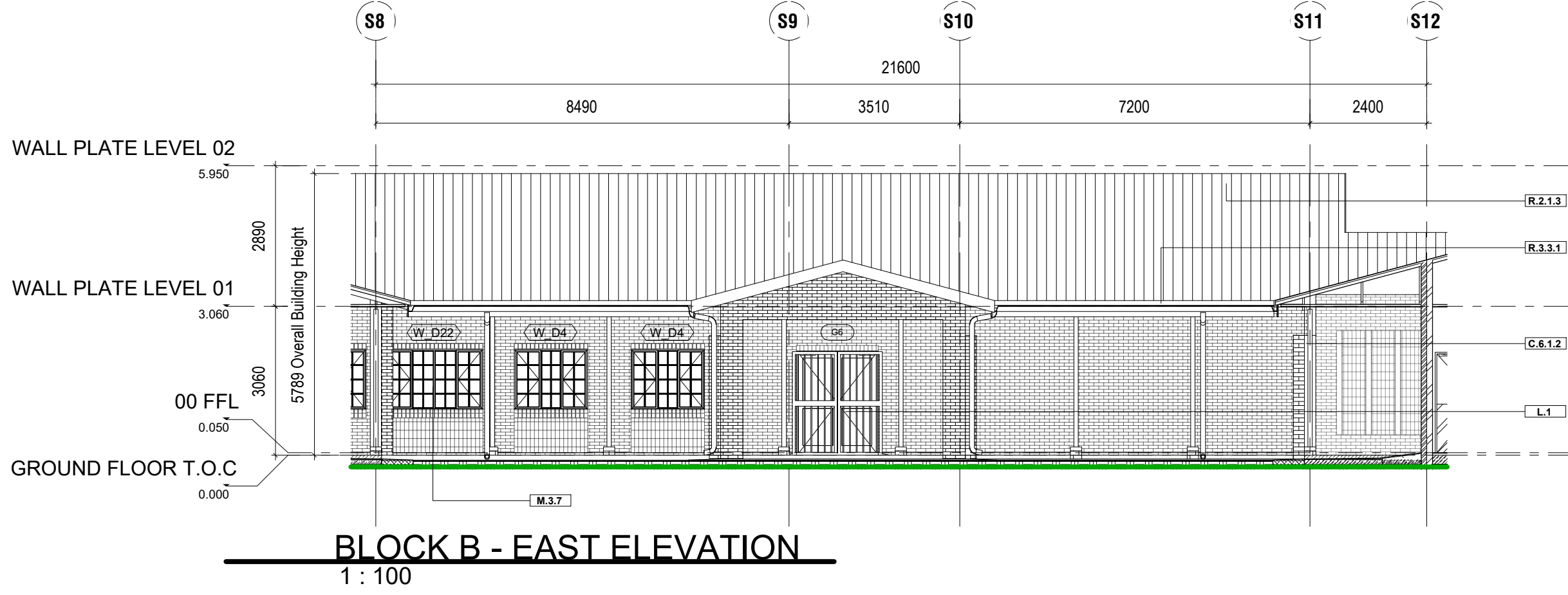
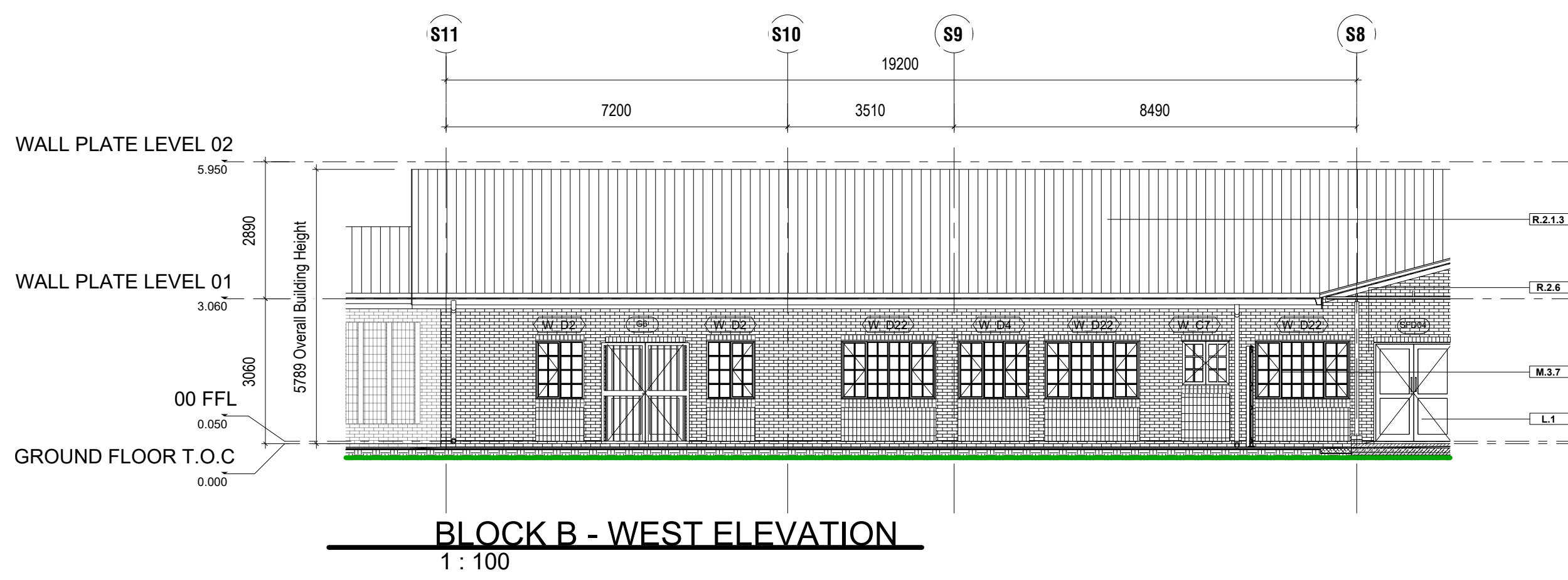
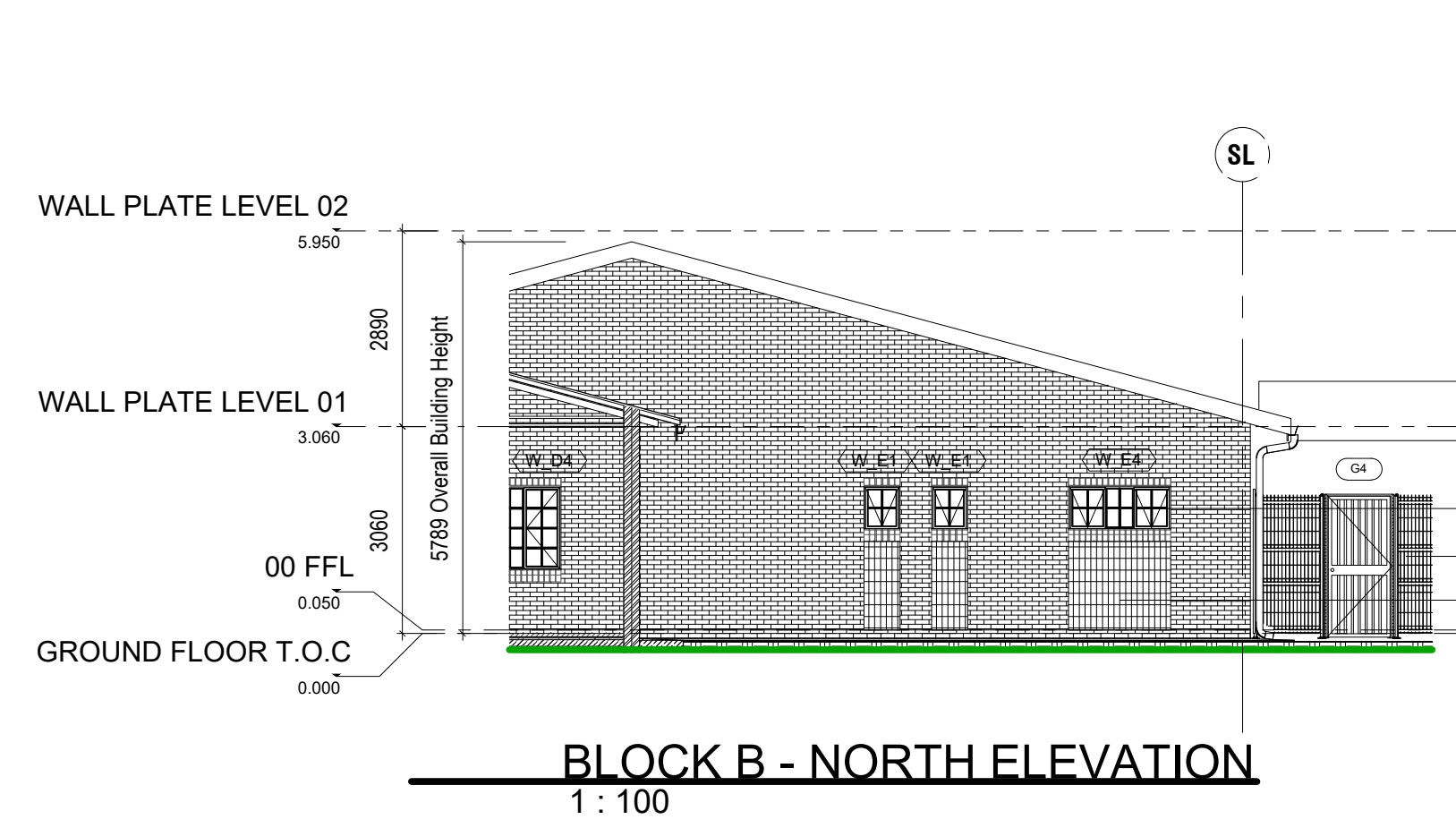


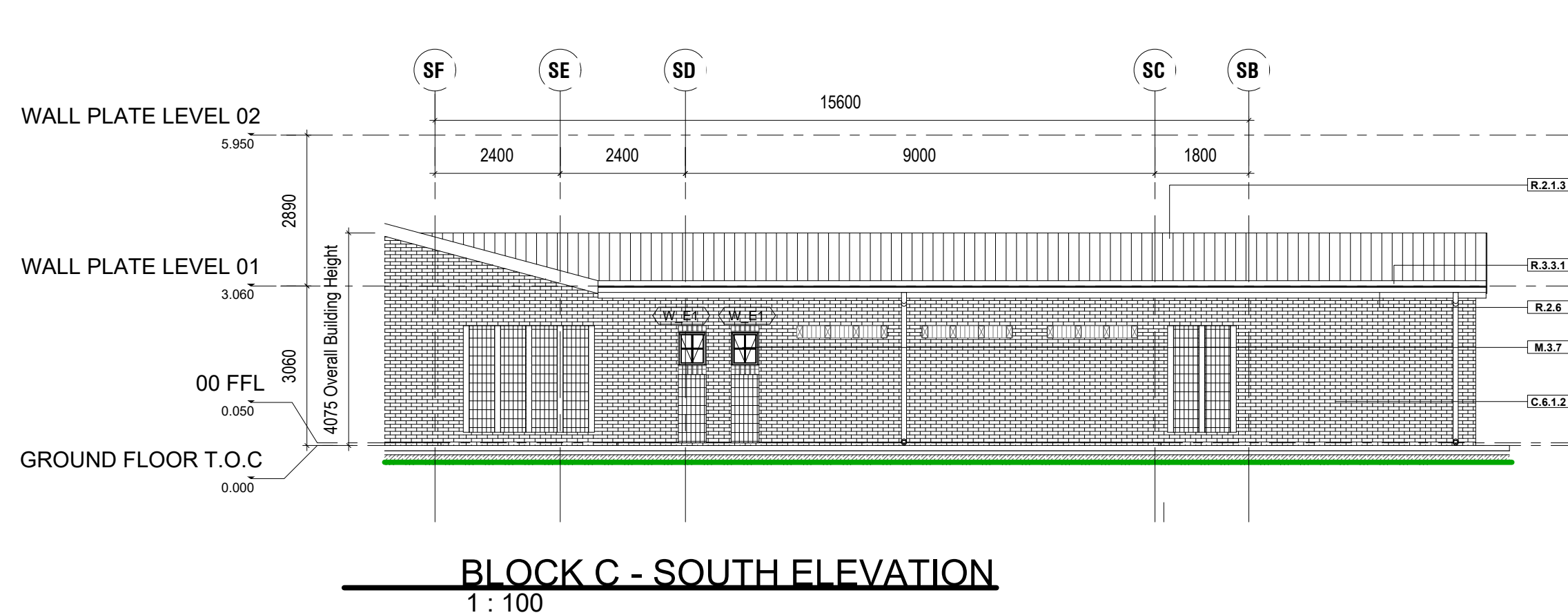
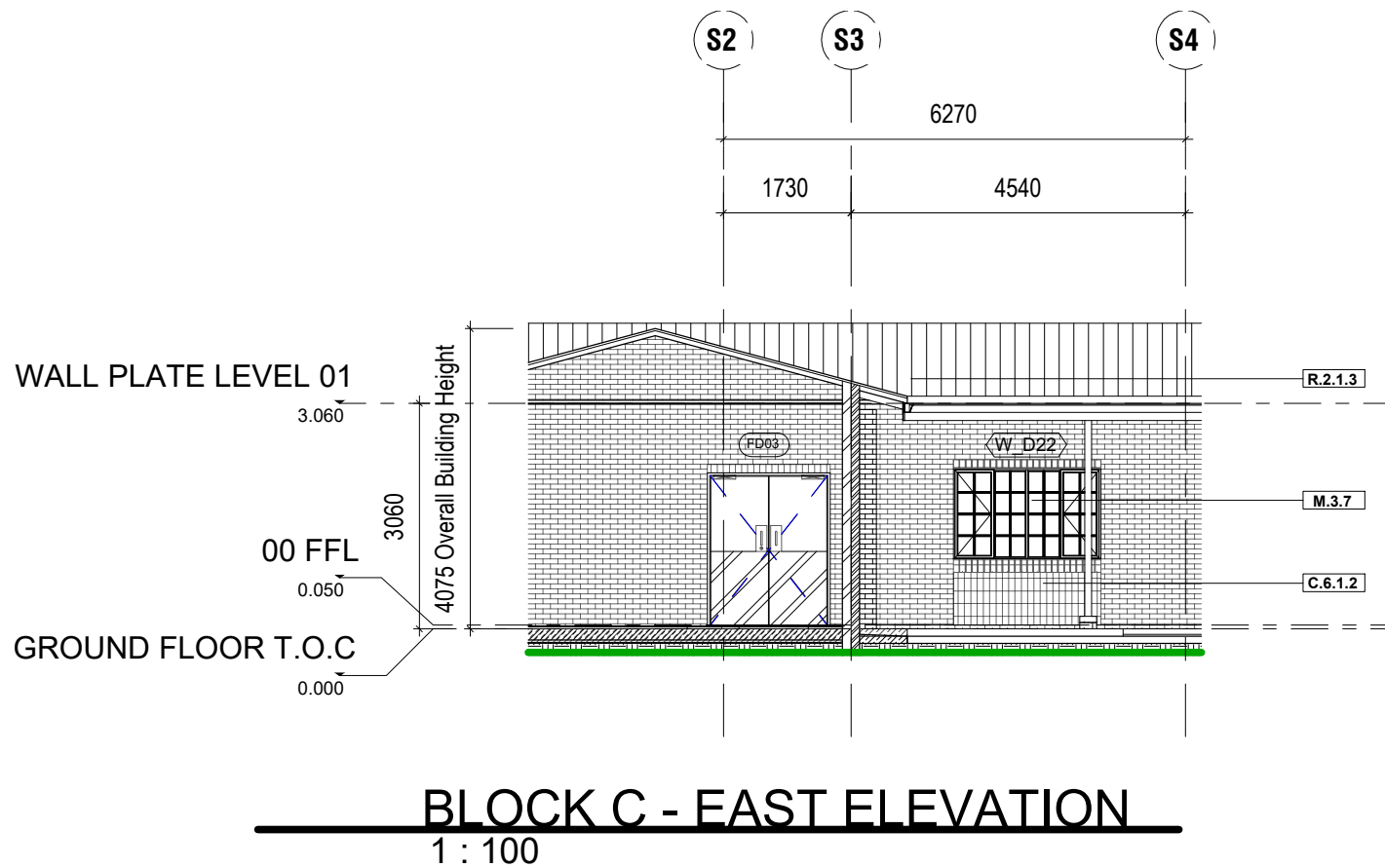
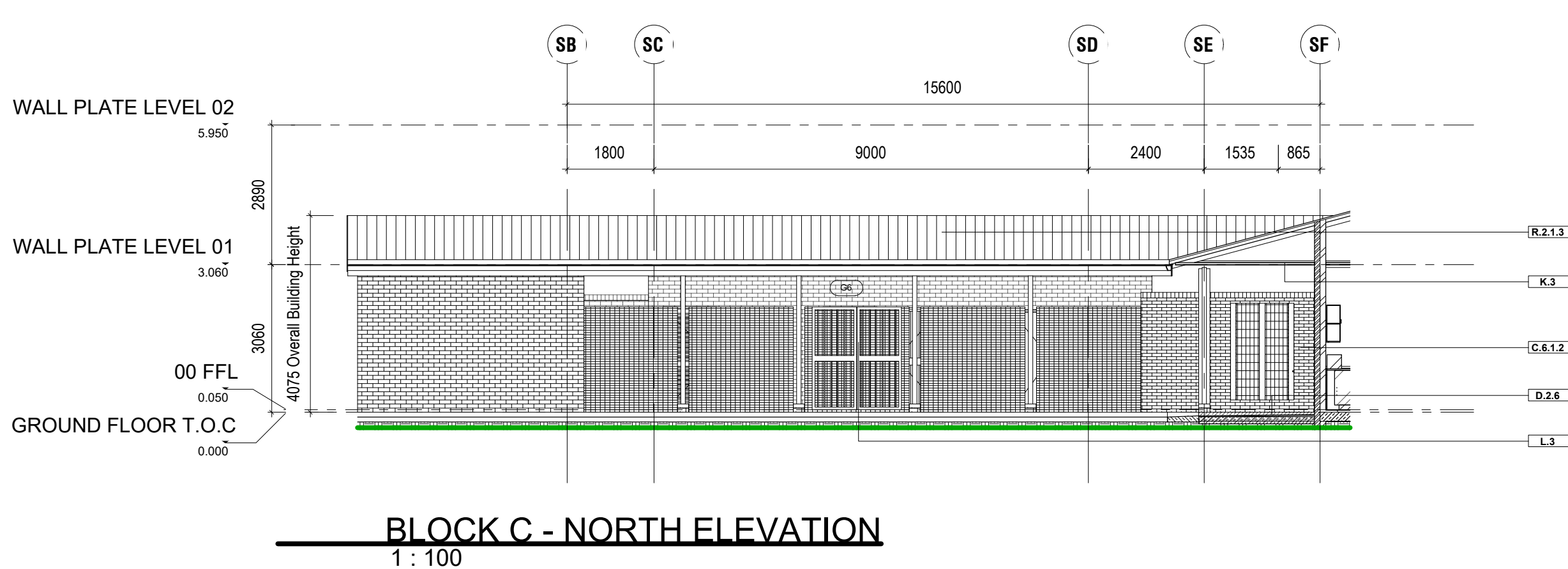
BLOCK A - GUARDHOUSE



BLOCK B - ADMIN & MAIN CENTRAL AREA



BLOCK C - SERVICES & STORES



NOTES LEGEND	
NOTE CODE	NOTES
C.6.1.2	EXTERNAL FACEBRICK WALL WITH FLUSH JOINTS BY SPECIALIST FINISH ACCORDING AS PER FINISH SCHEDULES & TO COMPLY WITH SANS 10403-K.
D.2.6	REINFORCED CONCRETE SLAB TO STRUCTURAL ENGINEER'S DETAILS ON LAYERWORKS TO ENGINEER'S DETAILS.
G.4.7	EPOXY COATED ALUMINIUM LOUVRES, WITH VERMIN PROOF MESH TO SPECIALIST'S DETAILS.
G.19.3	CLEARLY VISIBLE WALL, GALVANISED STEEL FENCING SYSTEM WITH SMOOTH ZINC COATING, PANELS TO BE REINFORCED WITH A 4 x 5MM FORMATION HORIZONTAL RECESSED BANDS AND FIXED TO FLUSH PANEL POST WITH NO CLIMBERING AIDS WITH ANTIVANDAL BOLTS TO MANUFACTURER'S DETAIL AND FINAL SPECIFICATION. SAMPLE TO BE PROVIDED FOR ARCHITECT'S FINAL ACCEPTANCE OF COLOUR AND FINISH.
K.3	PLASTERBOARD CEILINGS
L.1	POWDER COATED ALUMINIUM SHOPFRONT DOOR
L.3	PRIMED & PAINTED GALVANISED STEEL LOUVRED DOOR
M.3.3	POWDER COATED ALUMINIUM WINDOW SYSTEM WITH 6.5mm THICK LAMINATED SAFETY GLASS (PG Standard) - E Range: Solavue HULSLING OPERABLE PANELS - BY SPECIALIST
M.3.7	STANDARD GAS WINDOWS WITH CLEAR SAFETY GLAZING INSTALLED COMPLETE WITH BURGULAR BARS TO OPENING SECTIONS - BY SPECIALIST
R.2.1.3	0.68MM THICK KLP-TITE A2150 ZINCAL - COLORPLUS: COLOUR ONE SIDE TBC, TO BE FIXED TO K.L. 700 GALVANISED KLP
R.2.6	ALUMINIUM FLASHING BY SPECIALIST
R.3.3.1	300x300MM PREFAB EXPOSED ALUMINIUM BOX GUTTER SUPPLIED AND INSTALLED BY SPECIALIST TO FALL TO RIVER DOWNPIPE
R.3.5.1	100MM RAINWATER DOWNPIPE TO ENG SPEC & DETAIL

SPECIFICATION NOTES

BRICKWORK

Foundation brickwork to be hard burnt NFX type.

All internal surfaces to patient treatment areas to be plastered and painted. No face brick or stippled wall finish permitted due to infection control. Where charring has occurred in plaster, the wall is to be skimmed feathering to existing surface.

Corobrick Titanium Satin FBX or Silvergrey Satin FBX product or combination. 222 x 106 x 73 mm to be used as Facebrick. Standard common bricks to be used. - will be used as standard

All brickwork to septic tanks to be manhole bond (water bond) method grouted up. No straight joints will be permitted.

CEILINGS

600x1200x15mm acoustic OWA ceiling tiles: OWAoustic Correlation Premium biologically absorbable mineral wool ceiling tiles with Square-edge and white painted finish, laid on fire rated OWAstruct S15 exposed demountable T15 suspension system. 1200x600x6mm Pelican Econocal Calcium Silicate ceiling tiles with White vinyl face finish and aluminium foil backing laid onto Pelican Econogrid pre-painted white exposed tee grid system including fire safety punch outs with 25mm high density polyethylene insulation backing glued on. SMARTLAND NUTEC EXTERNAL CEILINGS (Nutec Ceiling Board 4mm 1200 x 3.000mm) Screw up flush suspended ceiling formed of concealed suspension system with galvanised steel angle section hangers. SPECIFICATION OF CEILING FINISHES 1x Rhinoboard® 9 mm (locally manufactured, ISO 9001 & 14001 certification, recycled paper content, Gleeatag Level B) fixed to Gyplframe® D3K Cross Tee (Locally manufactured, recycled content, ISO 9001 & 14001 certification).

ROOF COVERINGS

Timber roof trusses with 1200 c/c detailed specification to Engineers detail. Concealed fixing type ZincAl galvanised sheeting with Chromodeck finish of specified colour to upper side in inland areas. 0.6mm thick Chromodeck roof sheeting for putlins at 1.2m c/c spacing. Kip Tile 1.8mm profile as per manufacturers instruction and 2 direction foil faced with reinforced scrim in middle with non - combustible over putlin with galvanised straining wire at 275mm centre spacing. Insulation: 135mm thick Alukool non-combustible, mineral fibre with reinforced foil used in conjunction with straining wires at 275mm centres apart & asphrd spacer system as per manufacturers installation guidelines.

Aluminium pipes

Aluminium pipes and fixing straps shall be continuous extruded formed from 3003H14-3S4 alloy strip not less than 0.7mm thick factory coated on both sides as described for aluminium gutters. Pipes shall be in continuous lengths with formed angles, offsets, shoes, etc. Pipes shall be fixed to walls etc with 20 x 0.6mm straps at not exceeding 1.5m centres screwed to 25 x 75 x 100mm hardwood chamfered and oiled blocks plugged to walls

Aluminium gutters

Aluminium gutters shall be continuous extruded to required lengths and profiles from 3003H14-3S4 alloy strip not less than 0.7mm thick factory coated on both sides with baked enamel and low cost oil-silicone modified polyester to a total minimum thickness of 20 micrometres finish with under gutter brackets fixed through fibre cement into tilting battengutter bolted to fascia. Angles, stopped ends, etc shall be prefabricated units pop riveted to gutters with joints sealed with mastic. The gutting shall be in continuous lengths between angles, stopped ends, etc.

CORRIDORS

All corridors where patients are being transported shall have a minimum unobstructed width of 2.3m.

Any features such as bump rails, cupboards, ect. shall be regarded as wall or part of the wall.

All other corridor widths to comply with NBR

HEIGHTS ABOVE FLOOR LEVEL

The clear finished floor to ceiling heights for health facilities is to be a minimum of 3.0 meters in accordance with the NBR.

THIS DRAWING IS THE PROPERTY OF INCLINE ARCHITECTS. COPYRIGHT PATENTS AND ALL INDUSTRIAL RIGHTS RESERVED.

Notes

SIGNATURES: DEPT OF HEALTH

DISTRICT MANAGER

DATE

AREA MANAGER

DATE

CLINIC MANAGER

DATE

Stamped by Plans Approval Committee

Revisions		
Rev no	Date	Description

Checked by Consultant

Name

Signature

Date

Checked by Project Leader

Name

Signature

Date

Consultant

INCLINE
ARCHITECTS

3 PARK CLOSE | HILLCREST | 3410
TEL 031 765 5996 | CELL 082 496 3518
EMAIL dieter@inclinearchitects.co.za

Client

KZN Health
PROVINCE OF KWAZULU-NATAL
HEAD: HEALTH

Project
THULASIZWE CLINIC
ZNB 1009 / 2021-H

Drawing description
BLOCK ELEVATIONS
BLOCK A, B AND C

Drawn
DRO

Date
14/08/2024

Scale/s
1:100

Consultant Drawing number
103 - ELEVATIONS 02

DOH Drawing number
103 - ELEVATIONS 02

Revision
0

Revision
00

FOR TENDER
PURPOSES ONLY