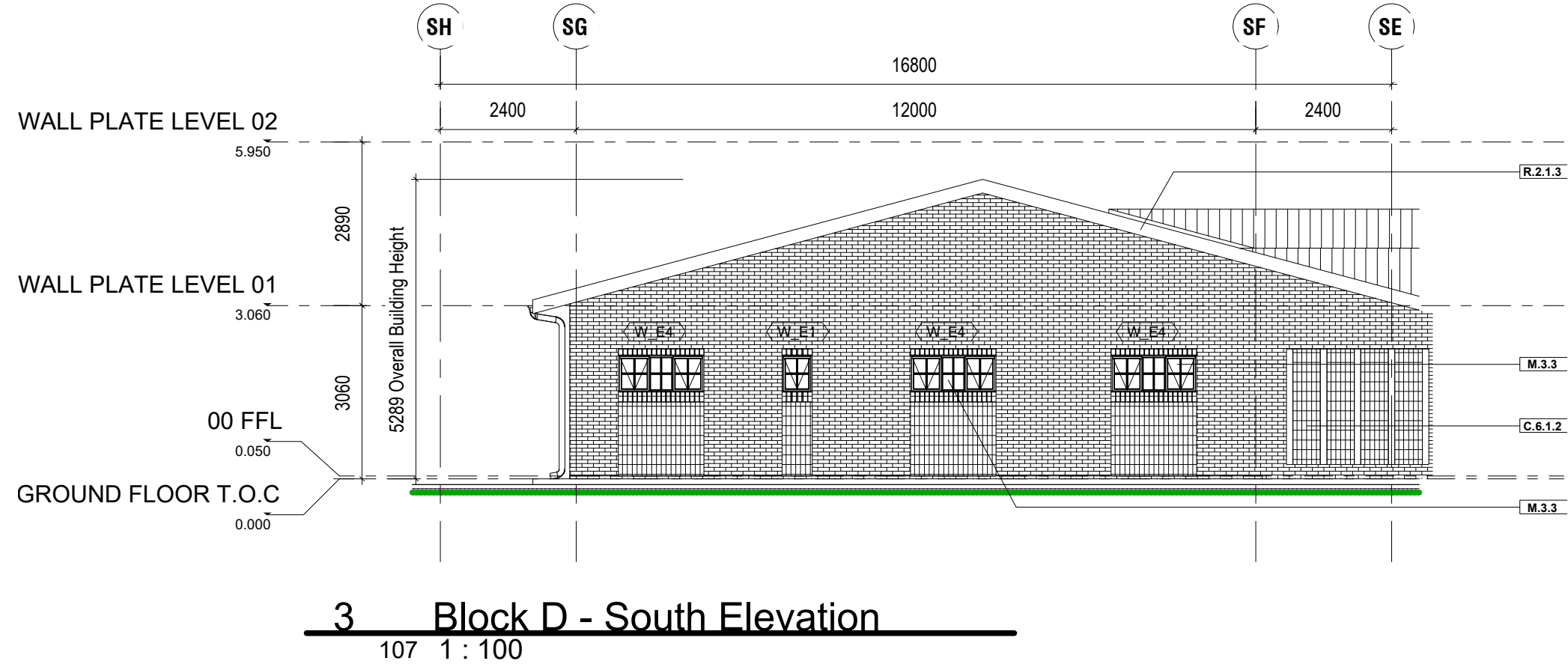
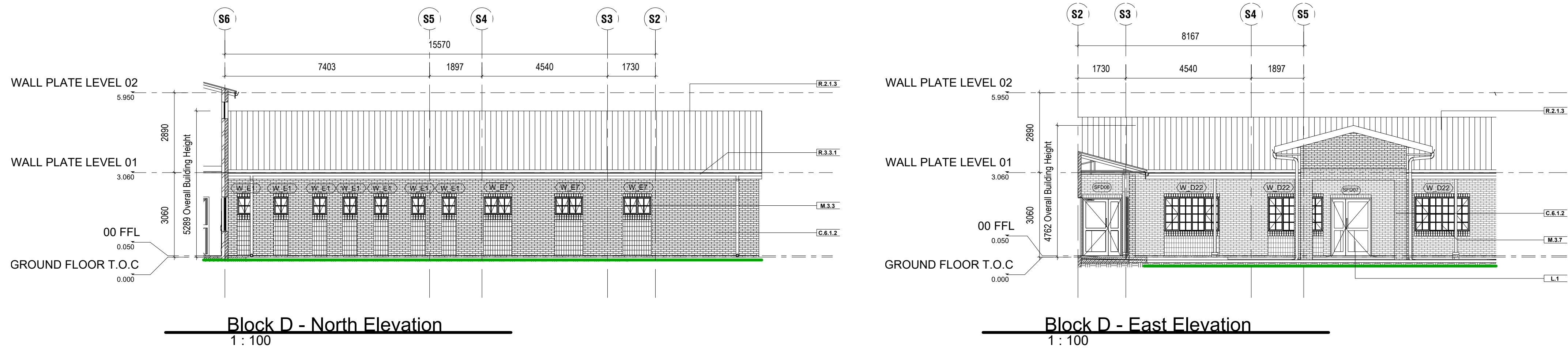
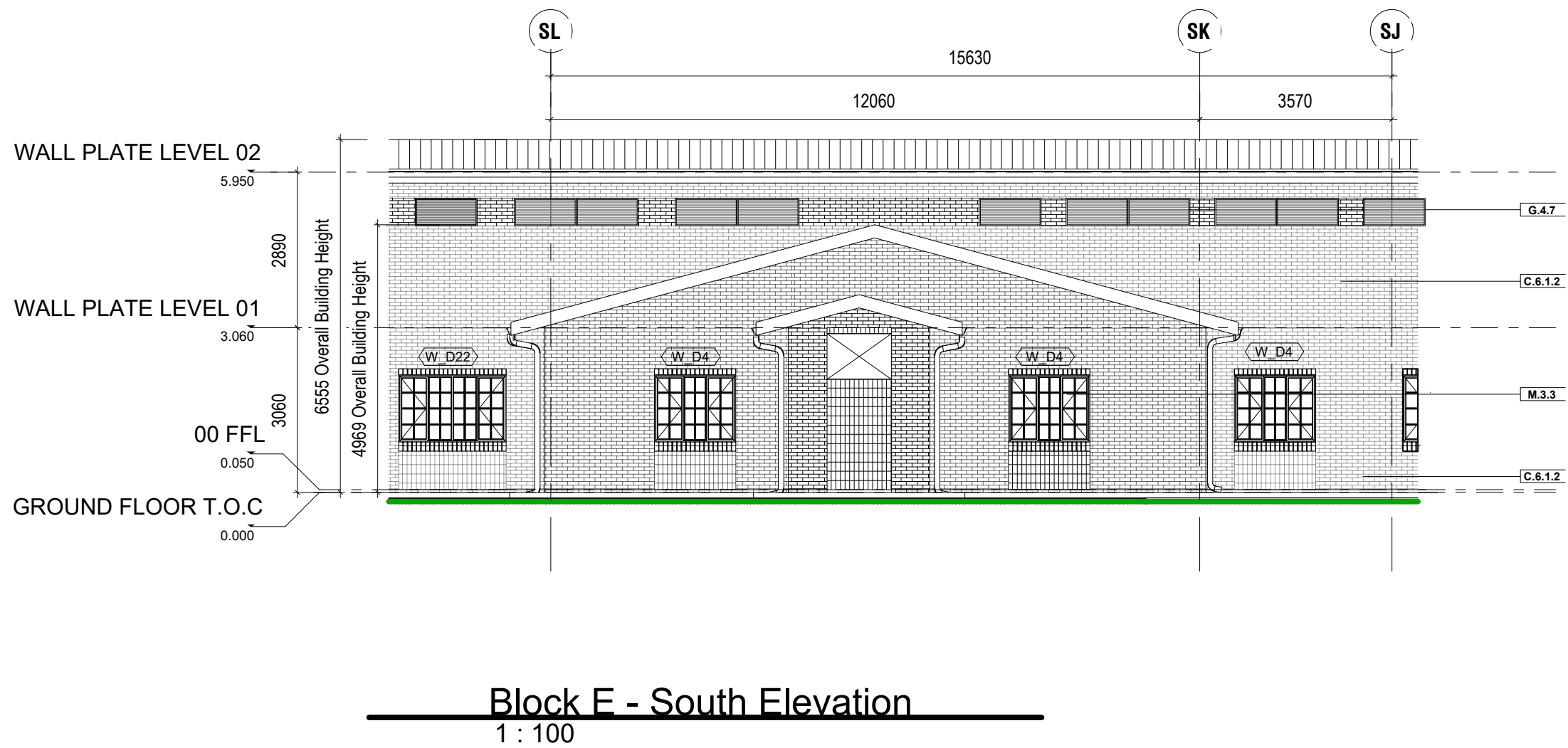
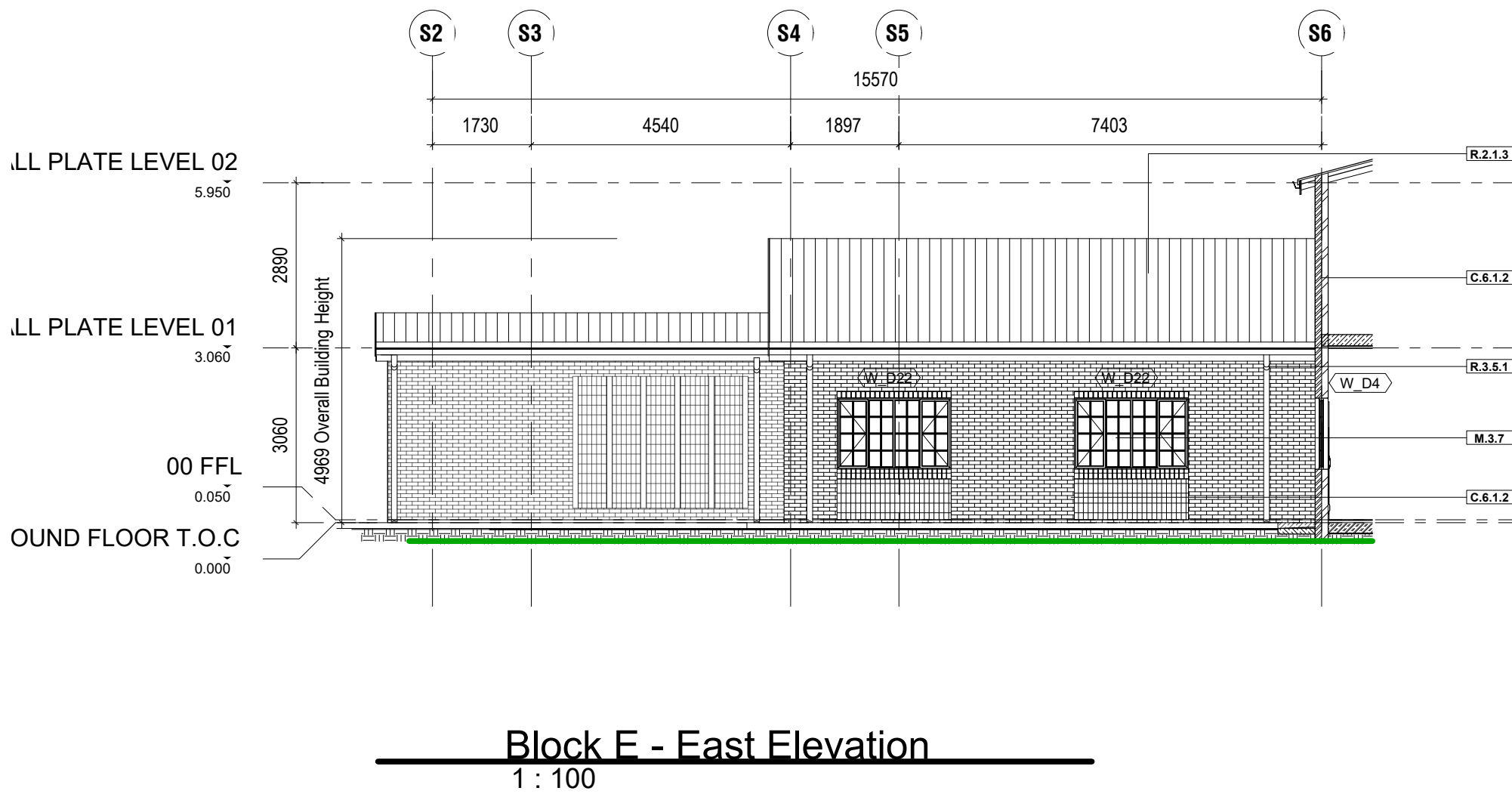
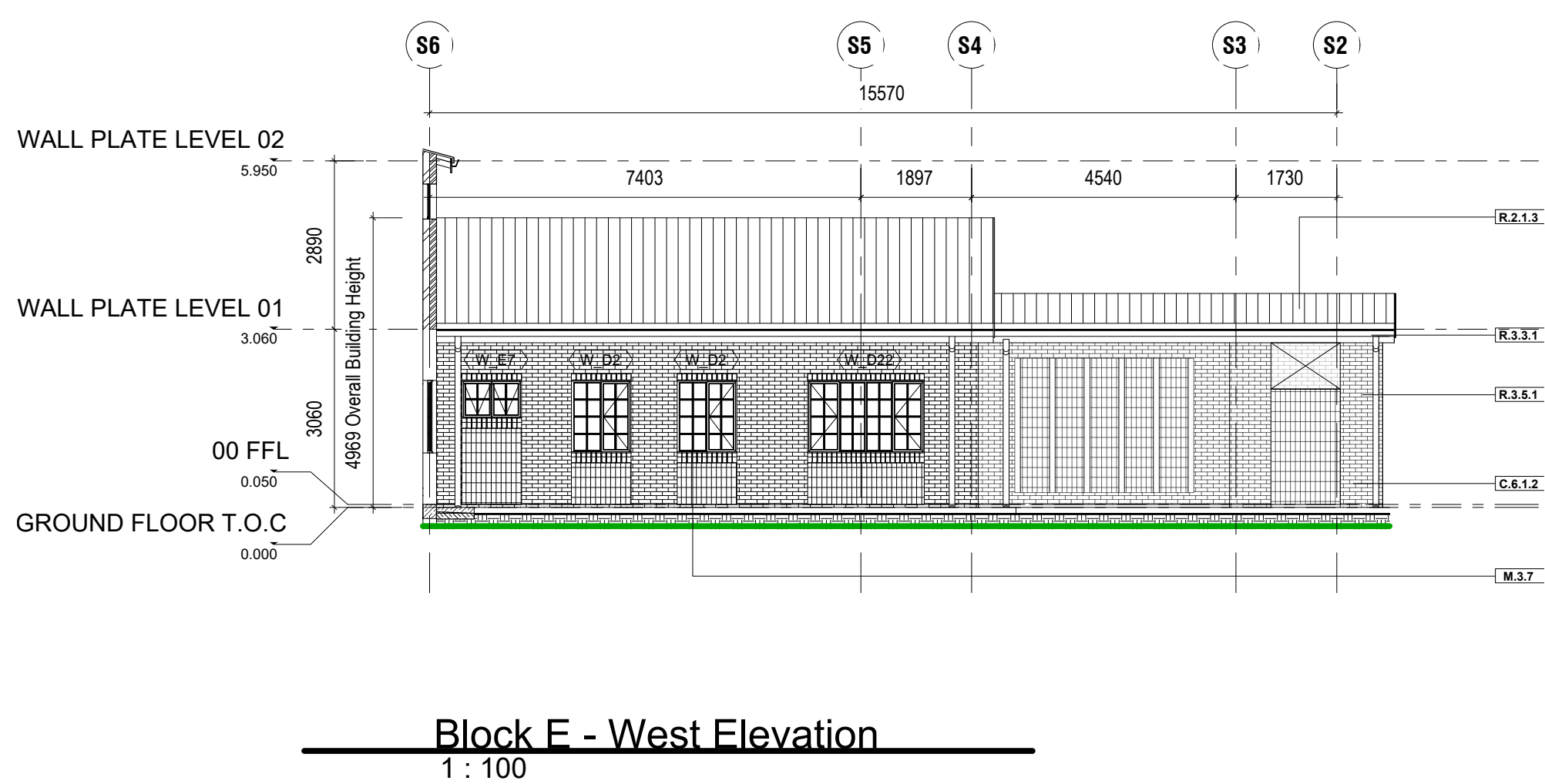


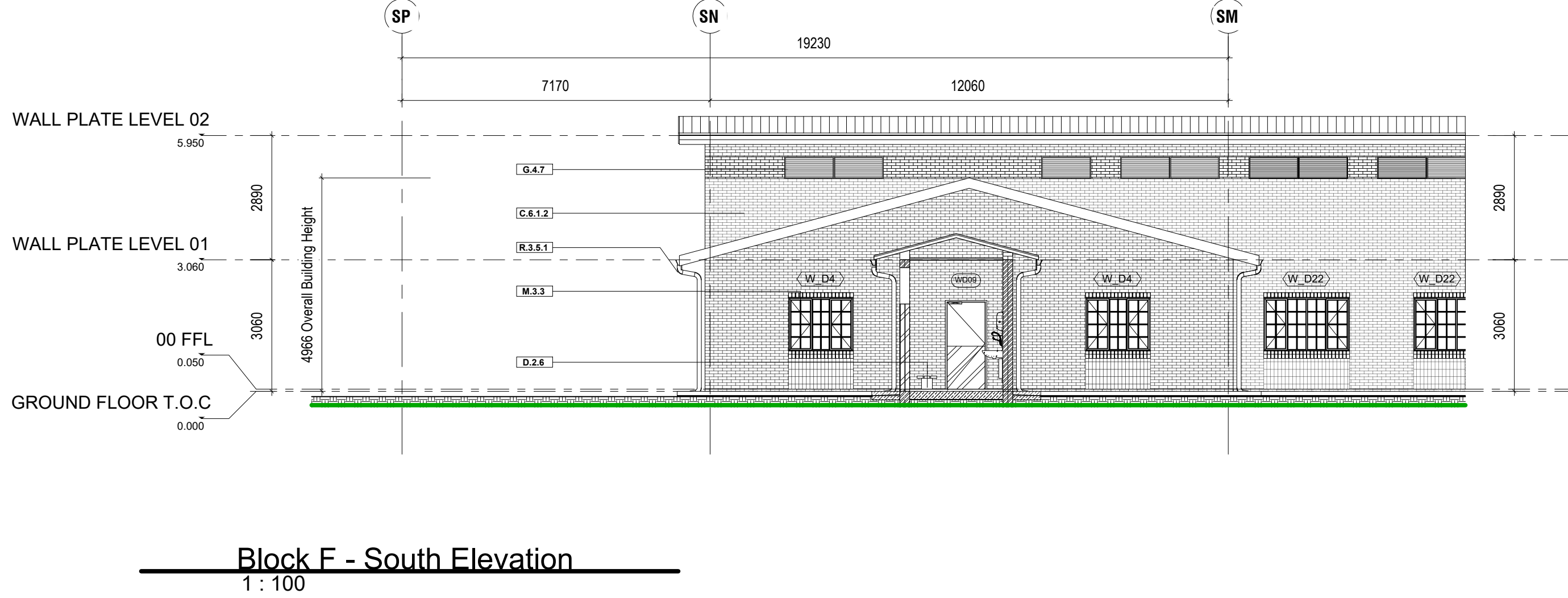
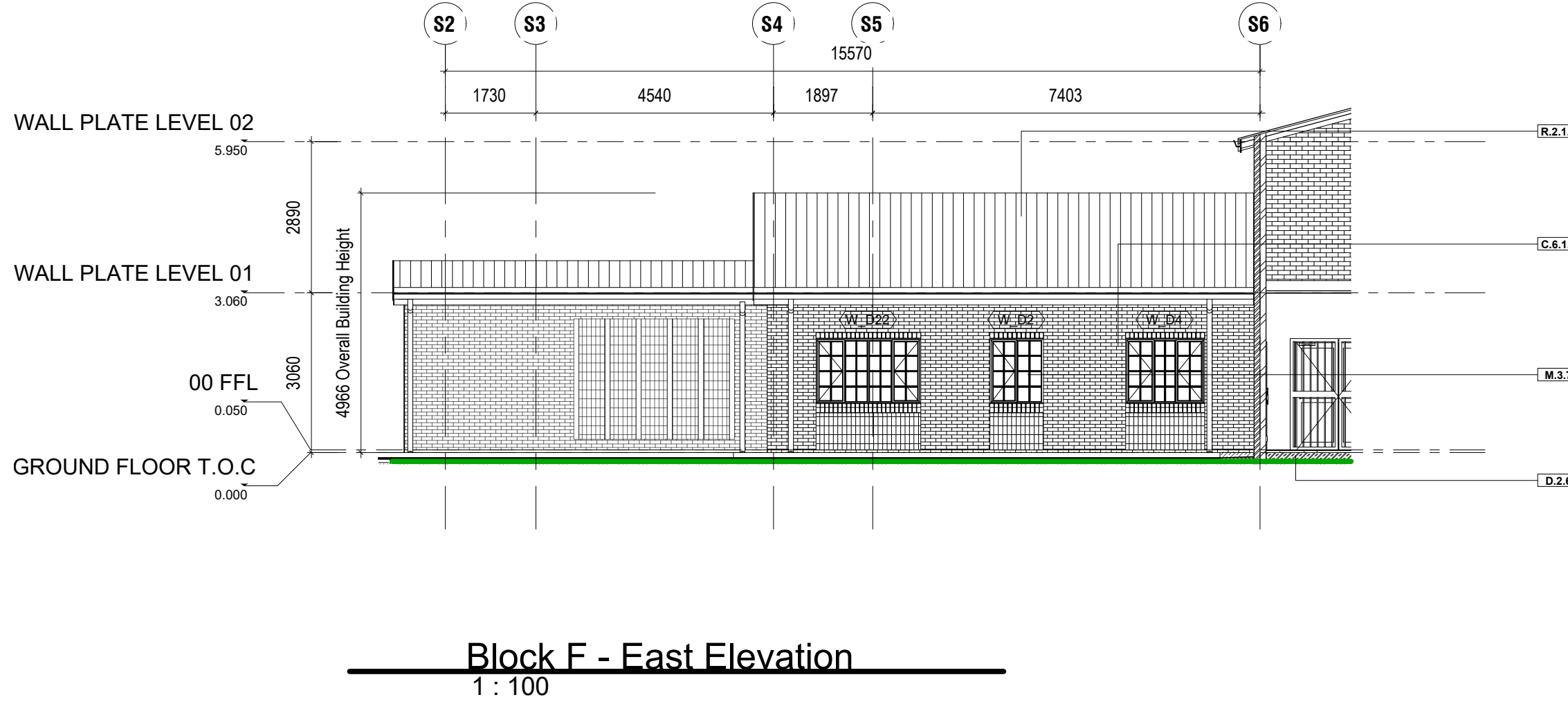
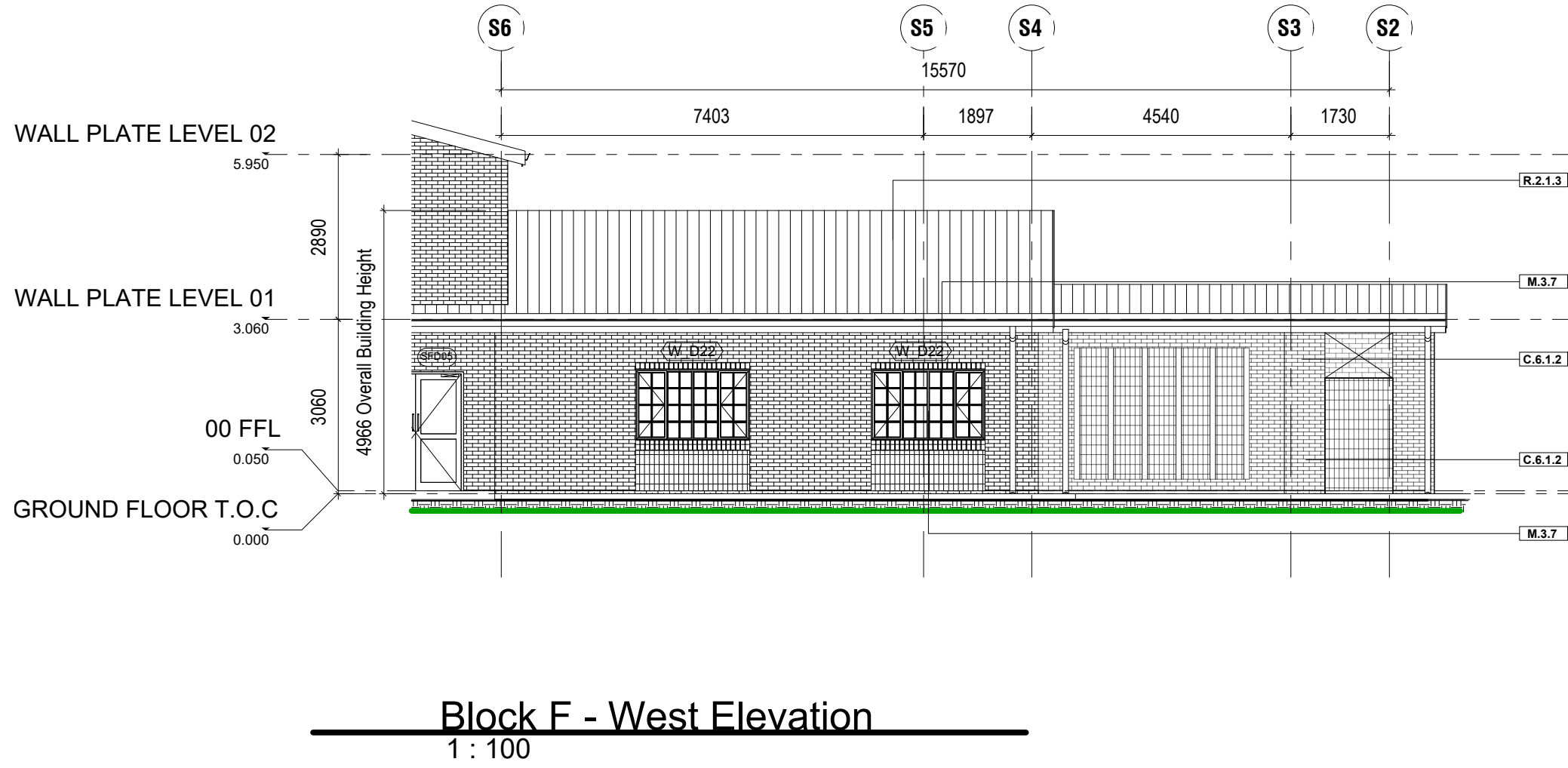
BLOCK D - EMERGENCY AND SUPPORT SERVICES



BLOCK E - ACUTE CARE



BLOCK F - CHRONIC CARE



NOTES LEGEND	
NOTE CODE	NOTES
C.6.1.2	EXTERNAL FACEBRICK WALL WITH FLUSH JOINTS BY SPECIALIST FINISH ACCORDING AS PER FINISH SCHEDULES & TO COMPLY WITH SANS 10400-K.
D.2.6	REINFORCED CONCRETE SLAB TO STRUCTURAL ENGINEERS DETAILS ON LAYERWORKS TO ENGINEERS DETAILS.
G.4.7	EPOXY COATED ALUMINIUM LOUVRES, WITH VERMIN PROOF MESH BY SPECIALISTS
L.1	POWDER COATED ALUMINIUM SHOPFRONT DOOR.
M.3.3	POWDER COATED ALUMINIUM WINDOW SYSTEM WITH 6.5mm THICK LAMINATED SAFETY GLASS PC (SmartView - 4 Range: Solarvue Neutral HL) SLIDING OPENABLE PANELS - BY SPECIALIST
M.3.7	STANDARD GMS WINDOWS WITH CLEAR SAFETY GLAZING INSTALLED COMPLETE WITH BURGLAR BARS TO OPENING SECTIONS - BY SPECIALIST
R.2.1.3	0.55MM THICK ALU-PLY AZ150 ZINCAL - COLORPLUS COLOUR ONE SIDE TBC, TO BE FIXED TO K.L. 780 GALVANISED R.L.P.
R.3.3.1	150X200MM PRE-FAB EXPOSED ALUMINIUM BOX GUTTER SUPPLIED AND INSTALLED BY SPECIALIST TO FALL TO R/W/D/D DOWNSPIPE
R.3.5.1	100MM RAINWATER DOWNSPIPE TO ENG SPEC & DETAIL.

SPECIFICATION NOTES

BRICKWORK

Foundation brickwork to be hard burnt NFX type.

All internal surfaces to patient treatment areas to be plastered and painted. No face brick or stippled wall finish permitted due to infection control. Where chasing has occurred in plaster, the wall is to be skimmed feathering to existing surface.

Corobrick Titanium Satin FBX or Silvergrey Satin FBX product or combination 222 x 116 x 73 mm to be used as Facebrick. Standard common bricks to be used - will be used as standard.

All brickwork to septic tanks to be manhole bond (water bond) method grouted up. No straight joints will be permitted.

CEILING

600x1200x15mm acoustic OWA ceiling tiles: OWA Acoustic Constellation Premium biologically absorbable mineral wool ceiling tiles with Square-edge and white painted finish, laid on fire rated OWA Construct S15 specified demountable T15 suspension system.

1000x600x60mm Pelican Econocal Calcium Silicate ceiling tiles with White vinyl face finish and aluminium foil backing laid onto Pelican Econogrid pre-painted white exposed leg grid system including fire safety punch outs with 25mm high density polystyrene insulation backing glued on.

SWARTLAND NUTEC EXTERNAL CEILING (Nutec Ceiling Board 4mm 1200 x 3000mm) Screw up flush suspended ceiling formed of concealed suspension system with galvanised steel angle section hangers.

SPECIFICATION OF CEILING FINISHES 1x Rhinoboard 9 mm (locally manufactured, ISO 9001 & 14001 certification, recycled paper content, GreenTag Level 5) fixed to Gyptone® D20K Cross Tie (locally manufactured, recycled content, ISO 9001 & 14001 certification).

ROOF COVERINGS

Timber roof trusses with 1200 c/c detailed specification to Engineers detail. Concealed fixing type ZincAl galvanised sheeting with Chromadek finish of specified colour to upper side in inward areas.

0.8mm thick Chromadek roof sheeting for purins at 1.2m c/c spacing.

Klip-Tite 1.8mm profile as per manufacturers instruction and 2 direction foil faced with reinforced scrim in middle with non-combustible over purin with galvanised straining wire at 275mm centre spacing.

Insulation: 135mm thick Alucocool non-combustible, mineral fibre with reinforced foil used in conjunction with straining wires at 275mm centres apart & ashgrid spacer system as per manufacturers installation guidelines.

Aluminium pipes

Aluminium pipes and fixing straps shall be continuous extruded formed from 3003H14-35H4 alloy strip not less than 0.7mm thick factory coated on both sides as described for aluminium gutters. Pipes shall be in continuous lengths with formed angles, offsets, shoes, etc. Pipes shall be fixed to walls etc with 20 x 0.6mm straps at not exceeding 1.5m centres screwed to 25 x 75 x 100mm hardwood chamfered and sited blocks plugged to walls.

Aluminium gutters

Aluminium gutters shall be continuous extruded to required lengths and profiles from 3003H14-35H4 alloy strip not less than 0.7mm thick factory coated on both sides with baked enamel and two coats of silicone modified polyester to a total minimum thickness of 20 micrometres finish with under gutter brackets fixed through fibre cement into tilting battens/gutter bolted to fascia. Angles, stopped ends, etc shall be prefabricated units pop riveted to gutters with joints sealed with mastic. The guttering shall be in continuous lengths between angles, stopped ends, etc.

CORRIDORS

All corridors where patients are being transported shall have a minimum unobstructed width of 2.3m.

Any fixtures such as bump rails, cutboards, ect. shall be regarded as wall or part of the wall.

HEIGHTS ABOVE FLOOR LEVEL

The clear finished floor to ceiling heights for health facilities is to be a minimum of 3.0 meters in accordance with the NBR.

THIS DRAWING IS THE PROPERTY OF INCLINE ARCHITECTS. COPYRIGHT PATENTS AND ALL INDUSTRIAL RIGHTS RESERVED.

Notes

SIGNATURES: DEPT OF HEALTH

DISTRICT MANAGER

DATE

AREA MANAGER

DATE

CLINIC MANAGER

DATE

Stamped by Plans Approval Committee

Revisions

Rev no	Date	Description	Rev by

Checked by Consultant

Name

Signature

Date

Checked by Project Leader

Name

Signature

Date

Consultant

INCLINE
ARCHITECTS

3 PARK CLOSE | HILLCREST | 3610
TEL 031 765 5996 | CELL 082 496 3518
EMAIL dieter@inclinearchitects.co.za

Client

KZN Health
PROVINCE OF KWAZULU-NATAL
HEAD: HEALTH

Project

THULASIZWE CLINIC
ZNB 1009 / 2021-H

Drawing description

BLOCK ELEVATIONS
BLOCK D, E & F

Drawn

DRO

14/08/2024

Scale:

1:100

Consultant Drawing number

104 - ELEVATIONS 03

DOH Drawing number

104 - ELEVATIONS 03

Revision

0

Revision

00