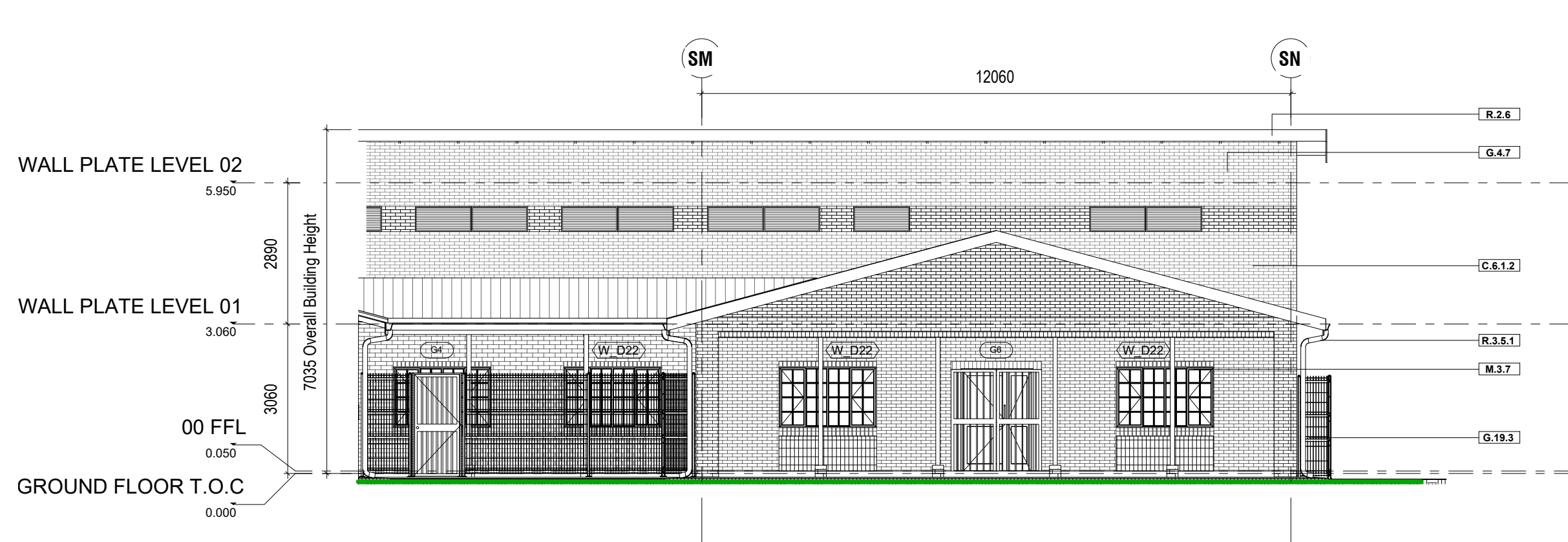
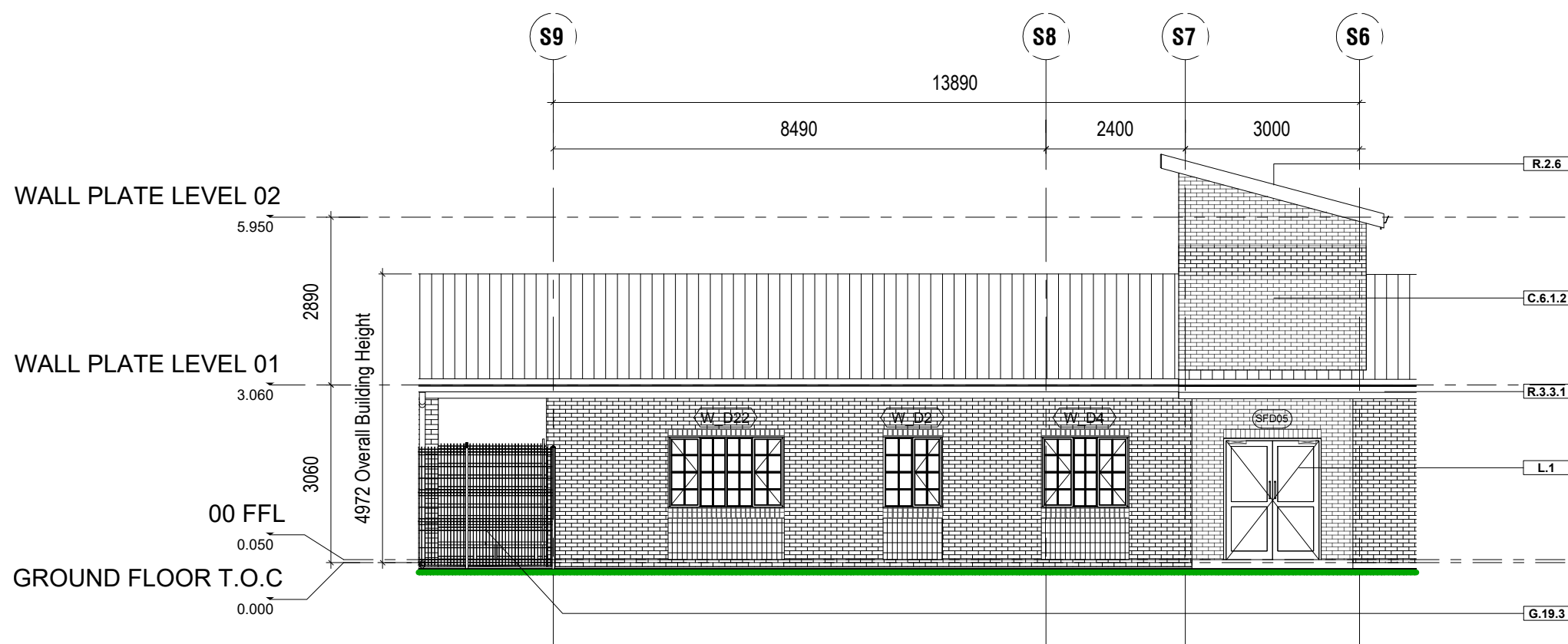


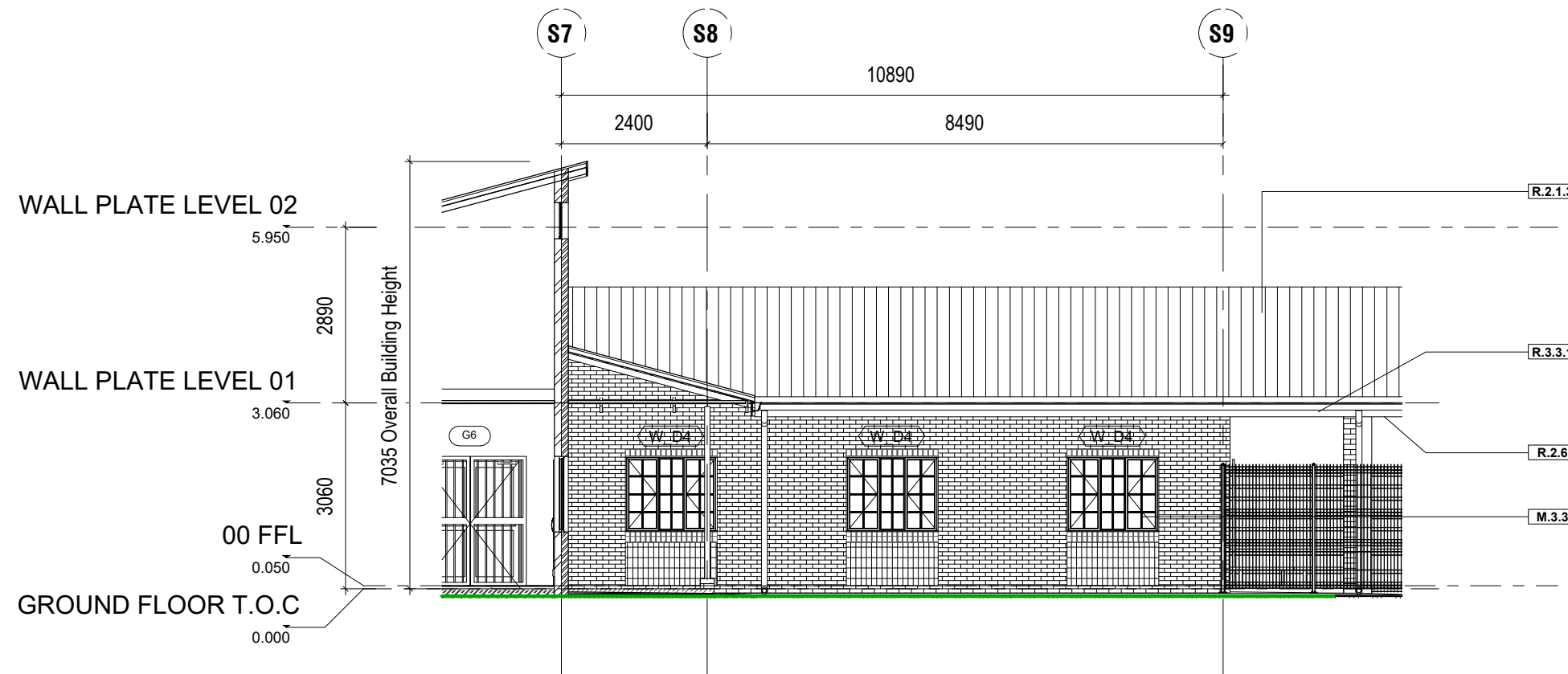
BLOCK G - PREVENTATIVE AND PROMOTIVE



Block G - North Elevation
1 : 100

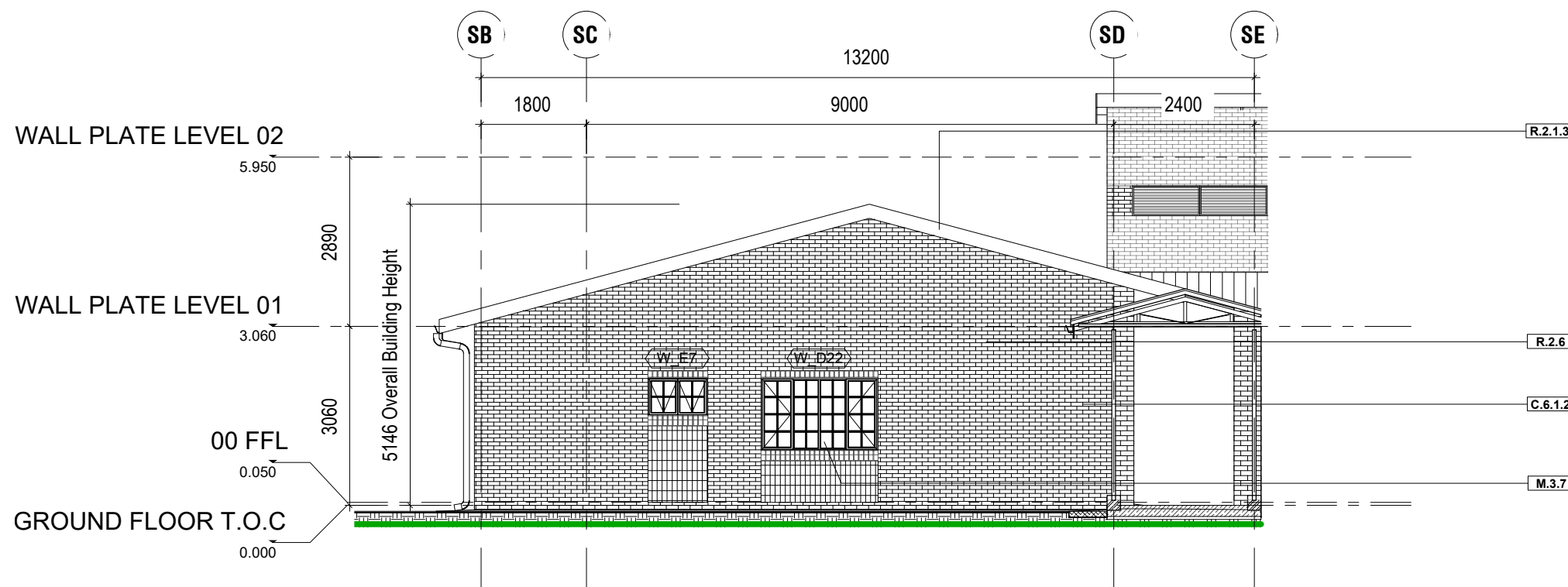


Block G - West Elevation
1 : 100

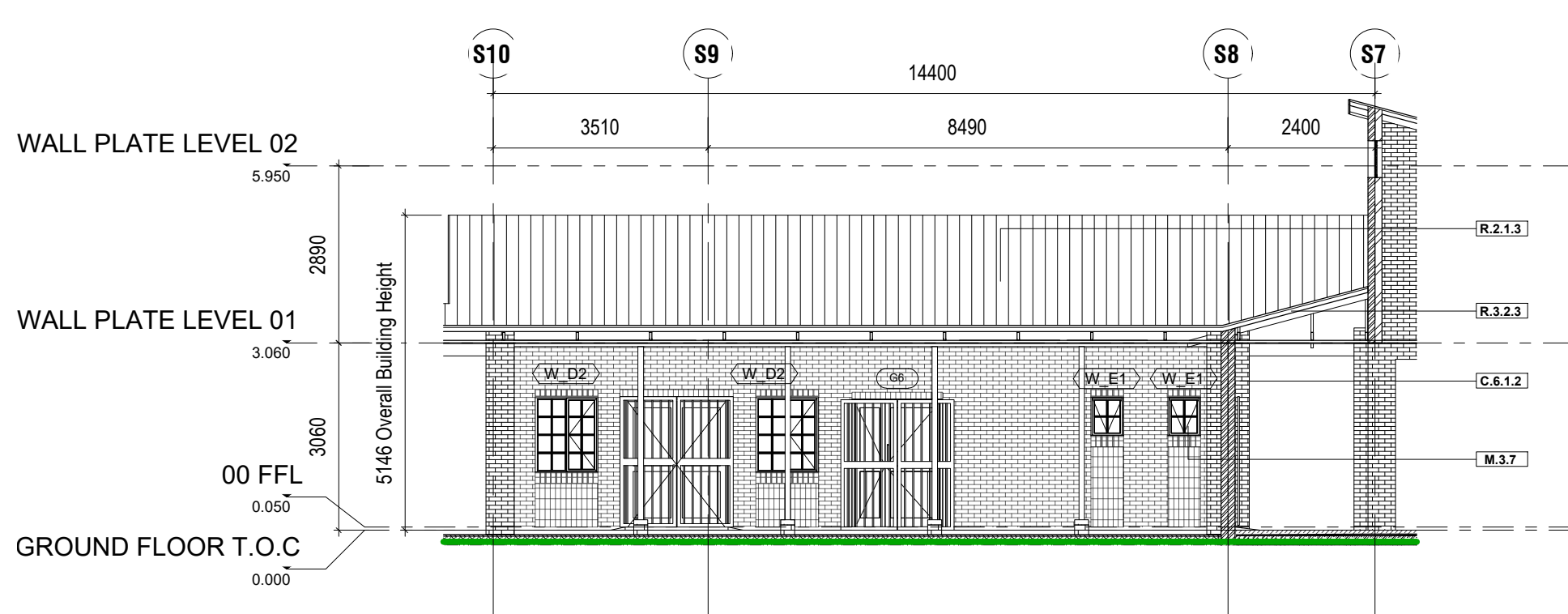


Block G - East Elevation
1 : 100

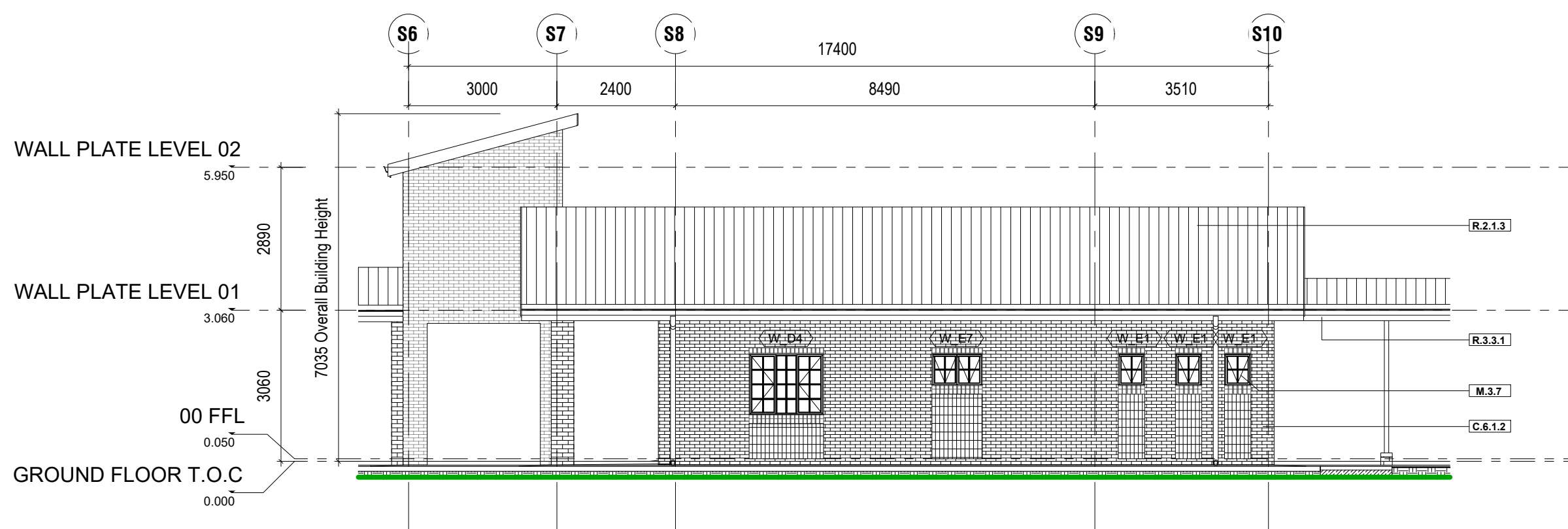
BLOCK H - YOUTH AND OUTREACH CENTRE



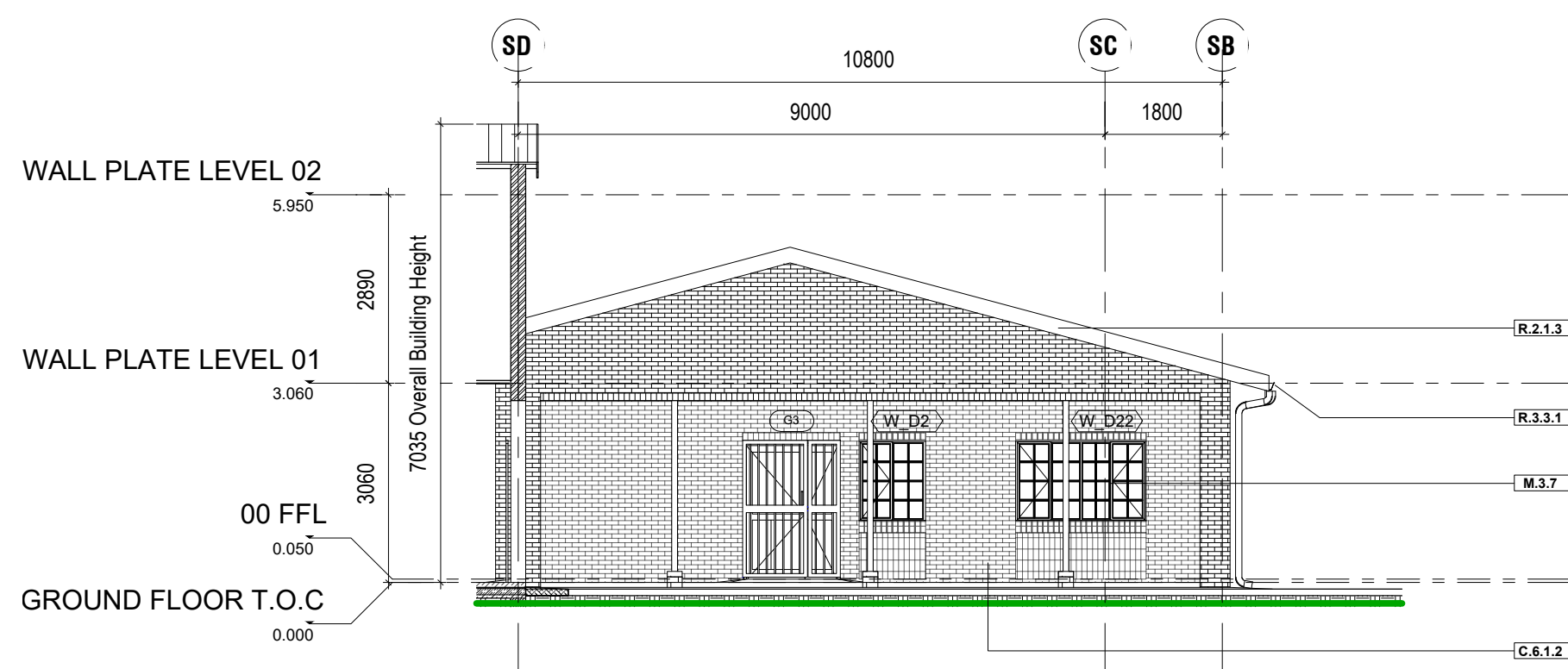
Block H - North Elevation
1 : 100



Block H - West Elevation
1 : 100



Block H - East Elevation
1 : 100



Block H - South Elevation
1 : 100

NOTES LEGEND	
NOTE CODE	NOTES
G.6.1.2	EXTERNAL FACEBRICK WALL WITH FLUSH JOINTS BY SPECIALIST FINISH ACCORDING AS PER FINISH SCHEDULES & TO COMPLY WITH SANS 10400-K.
G.4.7	EPOXY COATED ALUMINIUM LOURES WITH VERNIM PROOF MESH BY SPECIALISTS
G.19.3	GLARY(V) INVISIBLE WALL GALVANISED STEEL FENCING SYSTEM WITH SMOOTH ZINC COATING PANELS TO BE REINFORCED WITH 4 X 5MM FORMATION HORIZONTAL RECESSED BANDS AND FIXED TO FLUSH PANEL POST WITH NON CORROSIVE AND WITH ANKORAL BOLTS TO MANUFACTURERS DETAIL AND FINAL SPECIFICATION. SAMPLE TO BE PROVIDED FOR ARCHITECT'S FINAL ACCEPTANCE OF COLOUR AND FINISH.
L.1	POWDER COATED ALUMINIUM SHOPFRONT DOOR
M.3.3	POWDER COATED ALUMINIUM WINDOW SYSTEM WITH 6.5mm THICK LAMINATED SAFETY GLASS (PG 5mm) (Glass: 1.5 Range: Solvair Neutral HILLSLONG OPENABLE PANELS - BY SPECIALIST
M.3.7	STANDARD GAS WINDOWS WITH CLEAR SAFETY GLAZING INSTALLED COMPLETE WITH BURGLAR BARS TO OPENING SECTIONS - BY SPECIALIST
R.2.1.3	1.55MM THICK ALU-TITE A2150 ZINCAL - COLOURPLUS: COLOUR ONE SIDE TBC, TO BE FIXED TO K.L. 700 GALVANISED K.L.P.
R.2.6	ALUMINIUM FLASHING BY SPECIALIST
R.2.2.3	TIMBER RAFTERS WITH STEEL PURLING TO ENG SPEC AND DETAIL
R.3.3.1	300X200MM PRE-FAB EXPOSED ALUMINIUM BOX GUTTER SUPPLIED AND INSTALLED BY SPECIALIST TO FALL TO ROOF DOWNSPIPE
R.3.5.1	100MM RAINWATER DOWNSPIPE TO ENG SPEC & DETAIL

SPECIFICATION NOTES

BRICKWORK

Foundation brickwork to be hard burnt NFX type.

All internal surfaces to patient treatment areas to be plastered and painted. No face brick or stippled wall finish permitted due to infection control.

Where chasing has occurred in plaster, the wall is to be skimmed feathering to existing surface.

Cornbrick Titanium Satin FBX or Silvergrey Satin FBX product or combination. 222 x 106 x 73 mm to be used as Facebrick. Standard common bricks to be used. - will be used as standard

All brickwork to septic tanks to be manhole bond (water bond) method grouted up. No straight joints will be permitted.

CEILING

600x1200x15mm acoustic OWA ceiling tiles: OWAAcoustic - Consultation Premium biologically absorbable mineral wool ceiling tiles with Square-edge and white painted finish, laid on fire rated OWAconstruct S15 exposed demountable T15 suspension system.

1200x600x6mm Pelican Econocal Calcium Silicate ceiling tiles with White vinyl face finish and aluminium foil backing laid onto Pelican Econogrid pre-painted white exposed tee grid system including fire safety punch outs with 25mm high density polystyrene insulation backing glued on.

SWARTLAND NUTEC EXTERNAL CEILINGINGS (Nutec Ceiling Board 4mm 1200 x 3.000mm) Screw up flush suspended ceiling formed of concealed suspension system with galvanised steel angle section hangers.

SPECIFICATION OF CEILING FINISHES 1x Rhinoboard® 9 mm (locally manufactured, ISO 9001 & 14001 certification, recycled paper content, Greening Level B) fixed to Gyptframe® D30K Cross Tee (Locally manufactured, recycled content, ISO 9001 & 14001 certification).

ROOF COVERINGS

Timber roof trusses with 1200 c/c detailed specification to Engineers detail. Concealed fixing type ZincAl galvanised sheeting with Chromodeck finish of specified colour to upper side in mind areas.

0.8mm thick Chromadek roof sheeting for purins at 1.2m c/c spacing.

Big Tile 1.8mm profile as per manufacturers instruction and 2 direction foil faced with reinforced scrim in middle with non - combustible over purin with galvanised straining wire at 275mm centre spacing.

Insulation: 135mm thick Alucool non-combustible, mineral fibre with reinforced foil used in conjunction with straining wires at 275mm centres apart & airgap spacer system as per manufacturers installation guidelines.

Aluminium pipes

Aluminium pipes and fixing straps shall be continuous extruded formed from 3003H14-35H4 alloy strip not less than 0.7mm thick factory coated on both sides as described for aluminium gutters. Pipes shall be in continuous lengths with formed angles, offsets, shoes, etc. Pipes shall be fixed to walls etc with 20 x 0.6mm strips at not exceeding 1.5m centres screwed to 25 x 75 x 100mm hardwood chamfered and siled blocks plugged to walls

Aluminium gutters

Aluminium gutters shall be continuous extruded to required lengths and profiles from 3003H14-35H4 alloy strip not less than 0.7mm thick factory coated on both sides with baked enamel and two coats of silicone modified polyester to a total minimum thickness of 20 micrometres finish with under gutter brackets fixed through fibre cement into tilting battens/gutter bolted to fascia. Angles, stopped ends, etc shall be predrilled units pop riveted to gutters with joints sealed with mastic. The guttering shall be in continuous lengths between angles, stopped ends, etc.

CORRIDORS

All corridors where patients are being transported shall have a minimum unobstructed width of 2.3m.

Any fixtures such as bump rails, cupboards, ect. shall be regarded as wall or part of the wall.

All other corridor widths to comply with NBR

HEIGHTS ABOVE FLOOR LEVEL

The clear finished floor to ceiling heights for health facilities is to be a minimum of 3.0 meters in accordance with the NBR.

THIS DRAWING IS THE PROPERTY OF INCLINE ARCHITECTS. COPYRIGHT PATENTS AND ALL INDUSTRIAL RIGHTS RESERVED.

Notes

SIGNATURES: DEPT OF HEALTH

DISTRICT MANAGER

DATE

AREA MANAGER

DATE

CLINIC MANAGER

DATE

Stamped by Plans Approval Committee

Revisions

Rev no	Date	Description	Rev by

Checked by Consultant

Name

Signature

Date

Checked by Project Leader

Name

Signature

Date

Consultant

INCLINE
ARCHITECTS

3 PARK CLOSE | HILLCREST | 3610
TEL 031 765 5996 | CELL 082 496 3518
EMAIL dieter@inclinearchitects.co.za

Client



KZN Health

PROVINCE OF KWAZULU-NATAL

HEAD: HEALTH

Project

THULASIZWE CLINIC
ZNB 1009 / 2021-H

Drawing description

BLOCK ELEVATIONS
BLOCK G & H

Drawn

DRO

Date

14/08/2024

Scale/s

1:100

Consultant Drawing number

105 - ELEVATIONS 04

Revision

0

DOH Drawing number

105 - ELEVATIONS 04

Revision

00

FOR TENDER
PURPOSES ONLY