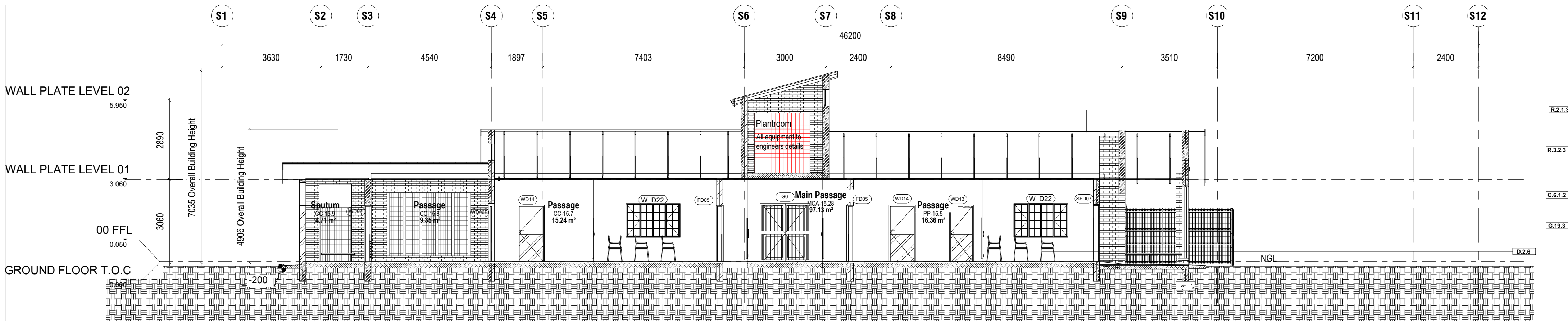
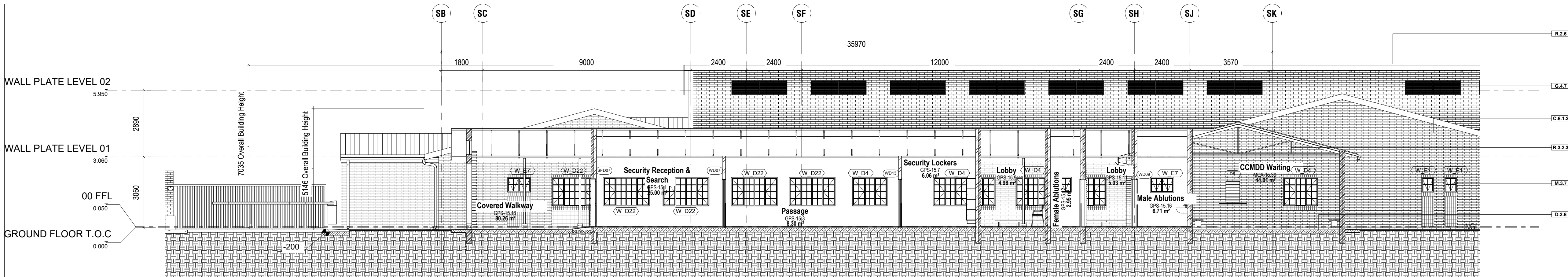


SECTION E-E  
1 : 100



SECTION E-F  
1 : 100



SECTION G-G  
1 : 100

NOTES LEGEND	
NOTE CODE	NOTES
C.6.1.2	EXTERNAL FACEBRICK WALL WITH FLUSH JOINTS BY SPECIALIST FINISH ACCORDING AS PER FINISH SCHEDULES & TO COMPLY WITH BAND 10M4-X.
D.2.6	REINFORCED CONCRETE SLAB TO STRUCTURAL ENGINEERS DETAILS ON LAYERSWORKS TO ENGINEERS DETAILS.
G.4.7	EPPOY COATED ALUMINIUM LOUVRES TO SPECIALISTS DETAILS.
G.19.3	CLEARLY INVISIBLE WALL, GALVANISED STEEL FENCING SYSTEM WITH SMOOTH ZINC COATING. PANELS TO BE REINFORCED WITH 4 X 50MM FORMATION HORIZONTAL RECESSED BANDS AND FIXED TO FLUSH PANEL POST WITH NO CLAMPING AND WITH ANTI-VANDAL BOLTS TO MANUFACTURERS DETAIL AND FINAL SPECIFICATION. SAMPLE TO BE PROVIDED FOR ARCHITECT'S FINAL ACCEPTANCE OF COLOUR AND FINISH.
M.3.7	STANDARD GASE WINDOWS WITH CLEAR SAFETY GLAZING INSTALLED COMPLETE WITH BURGLAR BARS TO OPENING SECTIONS - BY SPECIALIST.
R.2.1.3	0.55MM THICK KLIP-TITE A2150 ZINCAL - COLORPLUS - COLOUR ONE SIDE TBC. TO BE FIXED TO K.L. 709 GALVANISED KLIP.
R.2.6	ALUMINIUM FLASHING BY SPECIALIST.
R.3.2.3	TIMBER RAFTERS WITH STEEL PURLINS TO ENG SPEC AND DETAIL.
R.3.3.1	300X200MM PRE-FAB EXPOSED ALUMINIUM BOX GUTTER SUPPLIED AND INSTALLED BY SPECIALIST TO FALL TO RWDP DOWNPipe.
R.3.5.1	100MM RAINWATER DOWNPIPE TO ENG SPEC & DETAIL.

**GENERAL NOTES**

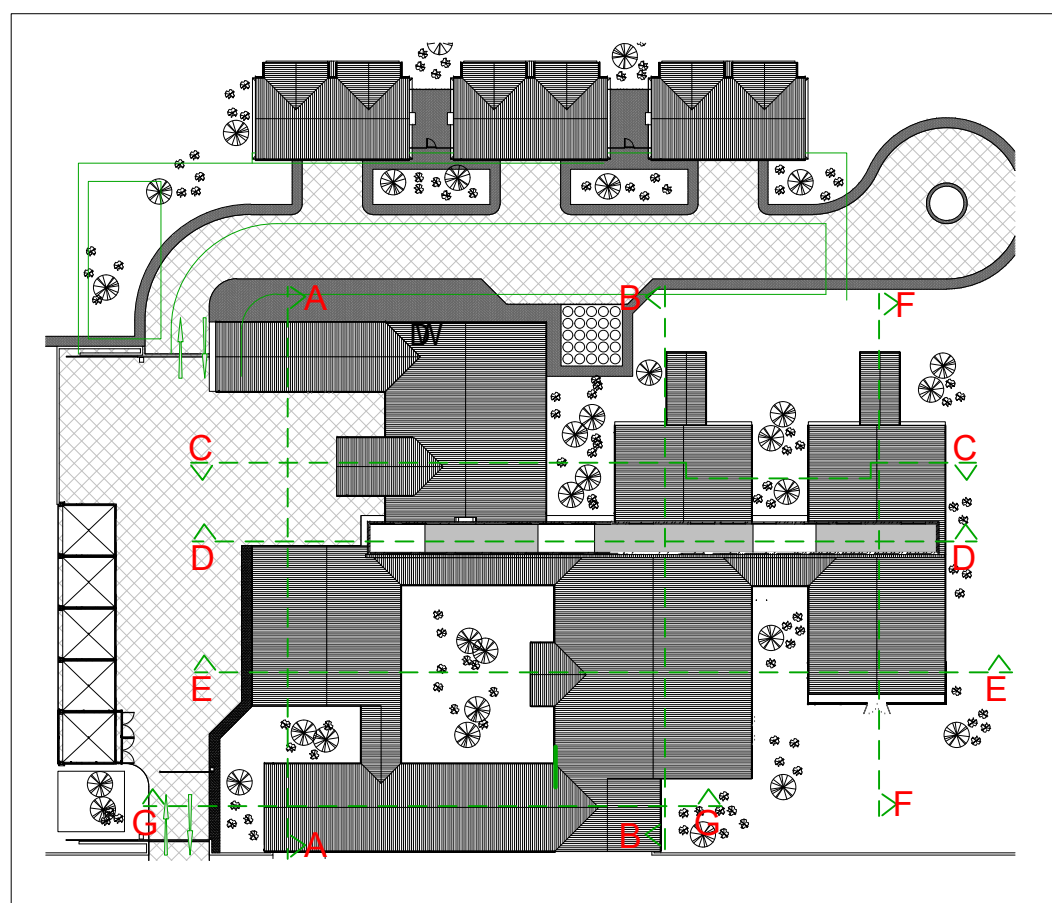
- ALL LEVELS AND DIMENSIONS TO BE CHECKED ON SITE PRIOR TO COMMENCING ANY WORK. ANY AND ALL DISCREPANCIES ARE TO BE VERIFIED WITH THE ARCHITECT IMMEDIATELY. PRIOR TO COMMENCEMENT OF WORK.
- ALL WRITTEN DIMENSIONS TO TAKE PREFERENCE OVER SCALED DIMENSIONS. DO NOT SCALE DRAWINGS.
- COPYRIGHT: PATENTS AND ALL INDUSTRIAL RIGHTS RESERVED.
- ALL NECESSARY FITTINGS, SEALS AND FIXTURES TO BE PROVIDED FOR, TO ENSURE QUALITY OF OPERATION.
- ALL SLABS, SCREED REINFORCED MESH, BEAMS, COLUMNS, FOUNDATIONS, STRUCTURAL STEEL, STRUCTURAL WALLS, RETAINING WALLS INCLUDING ANY OTHER STRUCTURAL ELEMENTS ARE TO BE IN ACCORDANCE WITH THE STRUCTURAL ENGINEERS DESIGN, DETAIL AND SPECIFICATION AND TO THE STRUCTURAL ENGINEERS APPROVAL.
- THIS DRAWING IS TO BE READ IN CONJUNCTION WITH ALL OTHER DRAWINGS SCHEDULES AND SPECIFICATIONS RELATED TO THIS PROJECT INCLUDING STRUCTURAL, FAÇADE AND CIVIL ENGINEERS DRAWINGS.
- ALL WATERPROOFING ELEMENTS TO BE APPLIED IN STRICT ACCORDANCE WITH MANUFACTURER'S INSTRUCTION. WATERPROOFING SYSTEM TO BE APPROVED BY CONTRACTOR'S SPECIALIST FOR ASSESSMENT GENERAL ARRANGEMENT AND APPROVED BY ARCHITECT.

- UNLESS OTHERWISE STATED ANY PRODUCTS SPECIFIED BY TRADE NAME ARE TO BE INSTALLED STRICTLY IN ACCORDANCE TO THE MANUFACTURER'S SPECIFICATIONS AND INSTRUCTIONS.
- QUALITY OF MATERIALS & WORKMANSHIP TO COMPLY WITH RELEVANT SABS & BSS SPECIFICATIONS. ALL WORK TO CONFORM TO THE MINIMUM STANDARDS AS SPECIFIED IN THE PREAMBLES IN THE B.O.Q.
- CONTRACTOR IS RESPONSIBLE FOR CORRECT SETTING OUT OF BUILDINGS EXTERNAL & INTERNAL WALLS, WITH PARTICULAR REFERENCE TO BOUNDARIES & BUILDING LINES.
- CONTRACTOR TO LOCATE & IDENTIFY EXISTING SERVICES AND TO PROTECT THESE FROM DAMAGE FOR THE DURATION OF THE WORK.
- ALL QUERIES/DISCREPANCIES MUST BE REPORTED TO THE ARCHITECT/ENGINEER FOR CLARIFICATION BEFORE THE WORK IS PUT TO HAND.
- ENGINEERS CERTIFICATE OF STABILITY TO BE PROVIDED UPON COMPLETION.
- ALL BEACONS TO BE EXPOSED & DEMARCATED ON COMMENCEMENT (WHERE NECESSARY).
- STORMWATER: NEW HARD SURFACES AROUND BUILDING TO BE LAID TO FALLS TO CIVIL ENGINEERS DETAILS. RAIN WATER DOWN PIPES FROM BUILDING TO BE CONNECTED TO EXISTING NEW STORMWATER PIPES TO CIVIL ENGINEERS DETAILS.

- THIS RECORD DRAWINGS/SPECIFICATION HAS BEEN PREPARED, IN PART, BASED UPON INFORMATION FURNISHED BY OTHERS.
- WHILE THIS INFORMATION IS BELIEVED TO BE RELIABLE, THE ARCHITECT ASSUMES NO RESPONSIBILITY FOR THE ACCURACY OF THIS RECORD DRAWINGS/SPECIFICATION OR FOR ANY ERRORS OR OMISSIONS THAT MAY HAVE BEEN INCORPORATED INTO IT AS A RESULT OF INCORRECT INFORMATION PROVIDED TO THE ARCHITECT.
- THOSE RELYING ON THIS RECORD DOCUMENT ARE ADVISED TO OBTAIN INDEPENDENT VERIFICATION OF ITS ACCURACY.

**DISCLAIMER**

- ALL WATERPROOFING DETAILS ARE INDICATIVE OF GENERAL PRINCIPLES. THE RESPONSIBILITY TO RENDER THE STRUCTURE WATERPROOF RESTS WITH THE SPECIALIST WATERPROOFING SUB-CONTRACTOR.



Locality Plan - Section Lines.  
1 : 750

#### SPECIFICATION NOTES

##### BRICKWORK

Foundation brickwork to be hard burnt NFX type.

All internal surfaces to patient treatment areas to be plastered and painted. No face brick or stippled wall finish permitted due to infection control.

Where chasing has occurred in plaster, the wall is to be skimmed feathering to existing surface.

Corobrick Titanium Satin FBX or Silvergrey Satin FBX product or combination. 222 x 106 x 73 mm to be used as Facebrick. Standard common bricks to be used - will be used as standard.

All brickwork to septic tanks to be manhole bond (water bond) method grouted up. No straight joints will be permitted.

##### CEILING

600x1200x15mm acoustic CWA ceiling tiles. CWA/Acoustic Constellation Premium biologically absorbable mineral wool ceiling tiles with Square-edge and white painted finish, laid on fire rated CWA/Acoustic S15 exposed demountable T15 suspension system.

1200x600x6mm Pelican Econocon Calcium Silicate ceiling tiles with White vinyl face finish and aluminum foil backing laid onto Pelican Econogrid pre-painted white exposed tee grid system including fire safety punch outs with 25mm high density polystyrene insulation backing glued on.

SWARTLAND NUTEC EXTERNAL CEILING (Nutec Ceiling Board 4mm 1200 x 3000mm) Screw up flush suspended ceiling formed of concealed suspension system with galvanneal steel angle section hangers.

**SPECIFICATION OF CEILING FINISHES** In Rhinoboard® 9 mm (locally manufactured, ISO 9001 & 14001 certification) recycled paper content. Greentap Level B) fixed to Gyproframe® DUX Cross Tree (locally manufactured, recycled content, ISO 9001 & 14001 certification).

##### ROOF COVERINGS

Timber roof trusses with 1200 c/c detailed specification to Engineers detail. Concealed fixing type ZincAl galvanneal sheeting with Chromadeck finish of specified colour to upper side in island areas.

0.8mm thick Chromadeck roof sheeting for purlins at 1.2m c/c spacing.

Klip Tite 1.8mm profile as per manufacturers instruction and 2 direction foil faced with reinforced scrim in middle with non-combustible over purlin with galvanneal straining wires at 275mm centre spacing.

Insulation: 150mm thick Alusol non-combustible, mineral fibre with reinforced foil used in conjunction with straining wires at 275mm centres apart & ashgrid spacer system as per manufacturers installation guidelines.

##### Aluminium pipes

Aluminium pipes and fixing straps shall be continuous extruded formed from 3003H14-35H4 alloy strip not less than 0.7mm thick factory coated on both sides as described for aluminium gutters. Pipes shall be in continuous lengths with formed angles, offsets, shoes, etc. Pipes shall be fixed to walls etc with 20 x 0.6mm straps at not exceeding 1.5m centres screwed to 25 x 75 x 100mm hardwood chamfered and oiled blocks plugged to walls.

##### Aluminium gutters

Aluminium gutters shall be continuous extruded to required lengths and profiles from 3003H14-35H4 alloy strip not less than 0.7mm thick factory coated on both sides with baked enamel and two coats of silicone modified polyester to a total minimum thickness of 20 micrometres finish with under gutter brackets fixed through fibre cement into tilting battens/gutter bolted to fascia. Angles, sloped ends, etc shall be prefabricated units pop riveted to gutters with joints sealed with mastic. The guttering shall be in continuous lengths between angles, sloped ends, etc.

##### CORRIDORS

All corridors where patients are being transported shall have a minimum unobstructed width of 2.2m.

Any fixtures such as bump rails, cupboards, ect. shall be regarded as wall or part of the wall.

All other corridor widths to comply with NBR

##### HEIGHTS ABOVE FLOOR LEVEL

The clear finished floor to ceiling heights for health facilities is to be a minimum of 3.0 meters in accordance with the NBR.

THIS DRAWING IS THE PROPERTY OF INCLINE ARCHITECTS. COPYRIGHT PATENTS AND ALL INDUSTRIAL RIGHTS RESERVED.

Notes

SIGNATURES: DEPT OF HEALTH

DISTRICT MANAGER

DATE

AREA MANAGER

DATE

CLINIC MANAGER

DATE

Stamped by Plans Approval Committee

Revisions		
Rev no	Date	Description

Checked by Consultant

Name

Signature

Date

Checked by Project Leader

Name

Signature

Date

Consultant

**INCLINE**  
ARCHITECTS  
3 PARK CLOSE | HILLCREST | 3610  
TEL 031 745 5996 | CELL 082 494 5518  
EMAIL: dieter@inclinearchitects.co.za

Client



**KZN Health**

PROVINCE OF KWAZULU-NATAL

HEAD: HEALTH

Project

**THULASIZWE CLINIC  
ZNB 1009 / 2021-H**

Drawing description

**SECTION E-E TO G-G**

Drawn: **DRO** Date: **14/08/2024**

Scale/s

**1:100**

Consultant Drawing number

**106 - SECTIONS**

DOH Drawing number

**106 - SECTIONS**

Revision

**0**

Revision

**00**

FOR TENDER  
PURPOSES ONLY