

VHD MONITOR 2007/2008



VRYHEID DISTRICT HOSPITAL STATISTICS REPORT 2007/2008



*K*waZulu-Natal Department of Health

Table of Content

Slide	List of Contents	Slide	List of Contents
2	Table of content	32-33	Teenage Delivery
3	Editor's comment	34-35	Live Birth In Facility to HIV Mother
4	Usable beds	36	Theatre
5-8	Admissions	37	Pharmacy
9-10	In-patient Days	38	Radiology
11-12	Bed occupancy rate	39	Laboratory
13	Bed turn over rate	40	Rehabilitation Center
14	separations	41-42	PHC Headcount >=5yrs & <5yrs
15	Deaths	43-44	PHC Headcount utilisation rate>=5yrs & <5yrs
16	Deaths	45-46	Measles <1 yr and Immunisation coverage
17	Death Rate	47	Under weight for age <5 yrs
18	Over-all hospital death	48-49	Vitamin A coverage 6-11 Months & 12-59 Months
19	Over-all Hospital death rate	50	Cervical cancer screening of women between 30-59 yrs
20	Average length of stay	51	PMTCT Uptake rate
21	Out Patient Headcount	52	VCT Uptake
22-23	Maternal Mortality	53	Budget and Expenditure overview (Hospital)
24	Neo-Natal Deliveries	54	Expenditure and Budget Estimate per Econ Classification
25	Peri-Natal and Neo-Natal Mortality	55	Expenditure Per Month Analysis for major cost Drivers (Hospital)
26-27	Caesarean Section	56	Expenditure per month Analysis for major cost Drivers (PHC)
28-29	Assisted deliveries	57	Budget and Expenditure Overview (PHC)
30-31	Low Birth Weight	58	Compilers



KwaZulu-Natal Department of Health

EDITORS COMMENT

Welcome to our 2007/2008 bulletin indicating hospital performance in the previous year. I hope you will enjoy it and it will also help the Hospital Information Management Team to monitor service delivery.

This will not be the last Vryheid District Hospital bulletin, but it is going to be issued monthly/ Quarterly. There are some sub-component statistics which were not included in this report, but I promise you that in the following issue you will see them.

The hospital is planning to launch a statistics publication which will be informative and will assist in Monitoring and Evaluation of service delivery to improve quality. "QUALITY CARE IS OUR BUSINESS AT VRYHEID HOSPITAL"

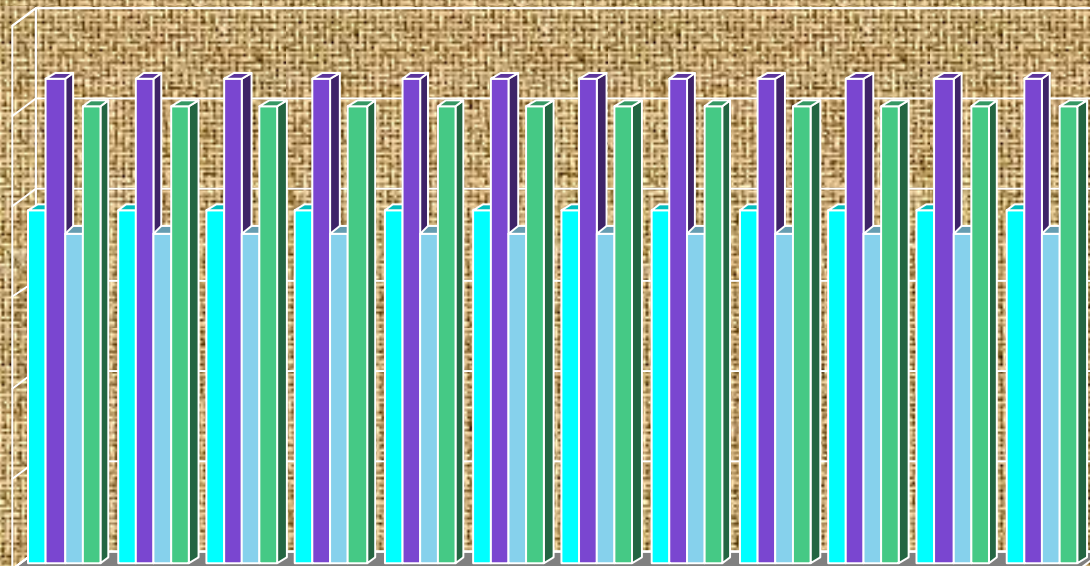
Thank you,

RZ Mbatha
Facility Information Officer
Vryheid District Hospital



*K*waZulu-Natal Department of Health

USABLE BEDS VRYHEID DISTRICT HOSPITAL 2007-2008



	Apr	May	Jun	Jul	Aug	Sept	Oct	Nov	Dec	Jan	Feb	Mar
■ Maternity	78	78	78	78	78	78	78	78	78	78	78	78
■ Medical	107	107	107	107	107	107	107	107	107	107	107	107
■ Paediatrics	73	73	73	73	73	73	73	73	73	73	73	73
■ Surgical	101	101	101	101	101	101	101	101	101	101	101	101



KwaZulu-Natal Department of Health

Admissions 2007/2008

Month	Maternity wards	Medical wards	Pediatrics	Surgical wards
Apr	399	371	200	266
May	411	424	298	237
Jun	405	291	138	214
Jul	466	455	156	265
Aug	371	464	176	309
Sep	314	447	240	301
Oct	375	452	194	332
Nov	364	389	198	317
Dec	396	422	192	312
Jan	422	483	211	375
Feb	390	410	257	317
Mar	424	488	198	305



*K*waZulu-Natal Department of Health

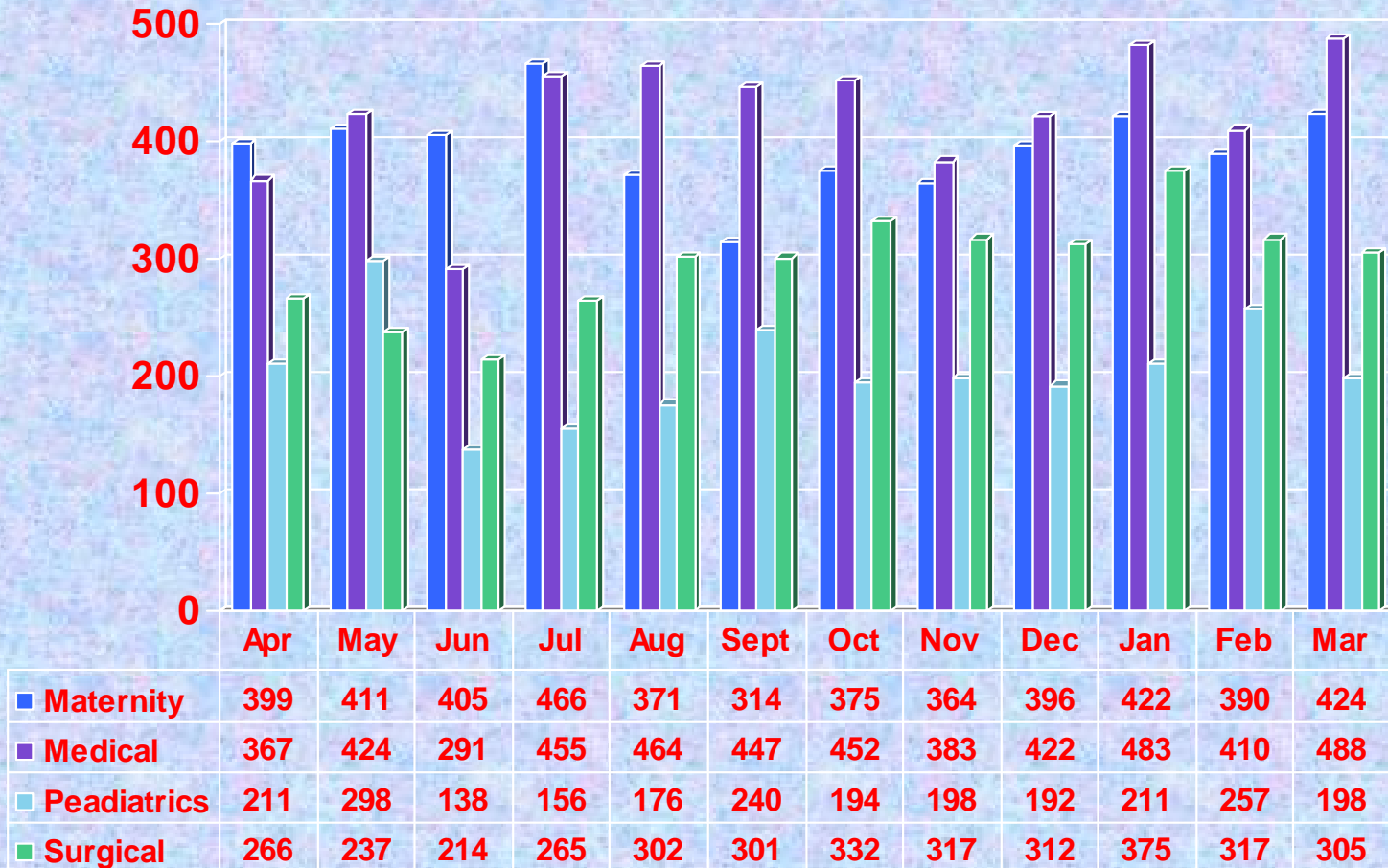
Pediatrics admissions 2007/2008

Month	Under 1yr	Under 5yrs	Under 13yrs
Apr	105	162	44
May	127	139	32
Jun	63	42	33
Jul	60	63	33
Aug	79	53	44
Sep	101	79	60
Oct	73	104	17
Nov	80	50	68
Dec	79	106	7
Jan	102	105	4
Feb	136	82	39
Mar	99	70	29



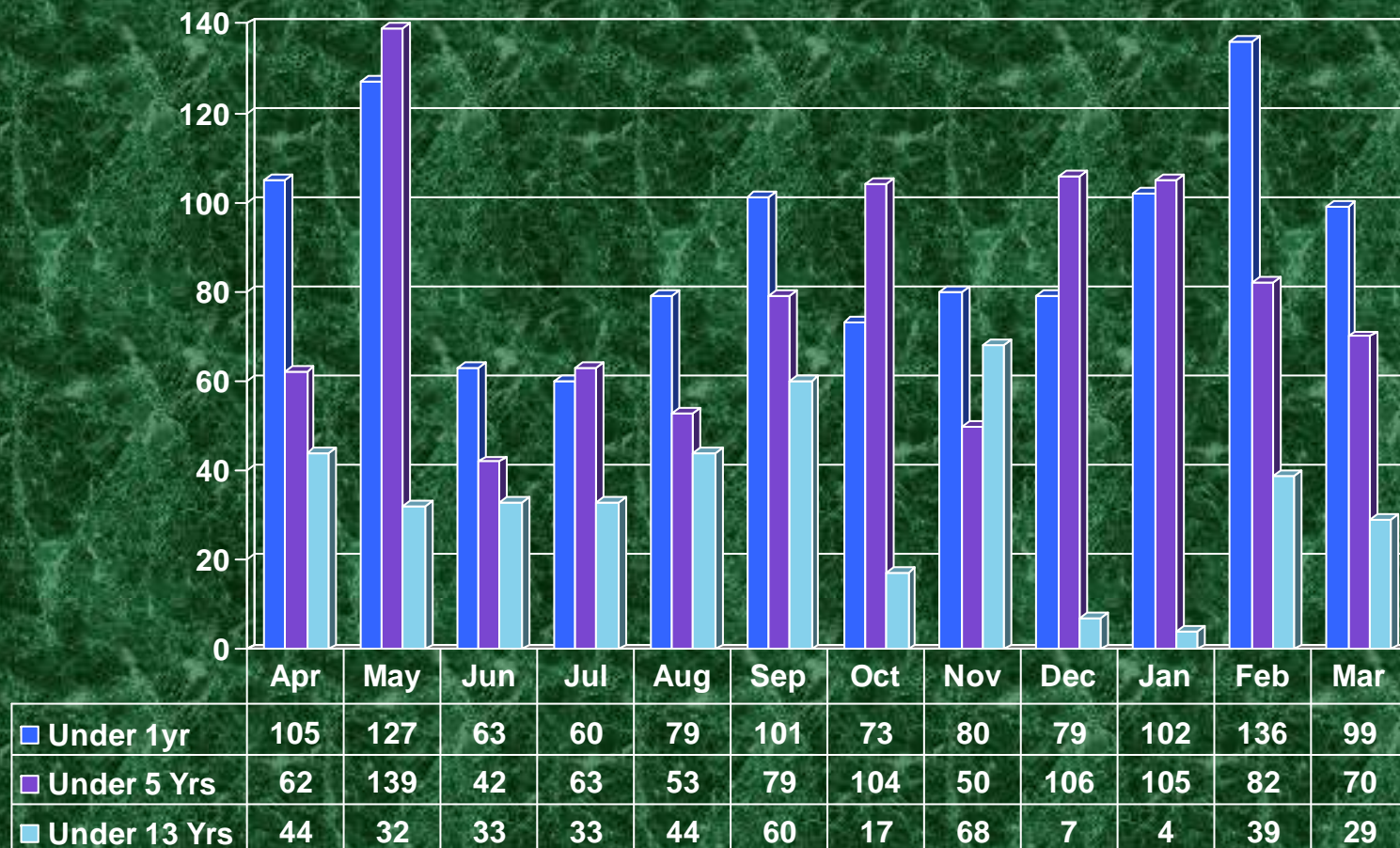
*K*waZulu-Natal Department of Health

Admissions Vryheid District Hospital 2007/2008



*K*waZulu-Natal Department of Health

ADMISSIONS (PEADIATRIC WARD) 2007-2008



*K*waZulu-Natal Department of Health

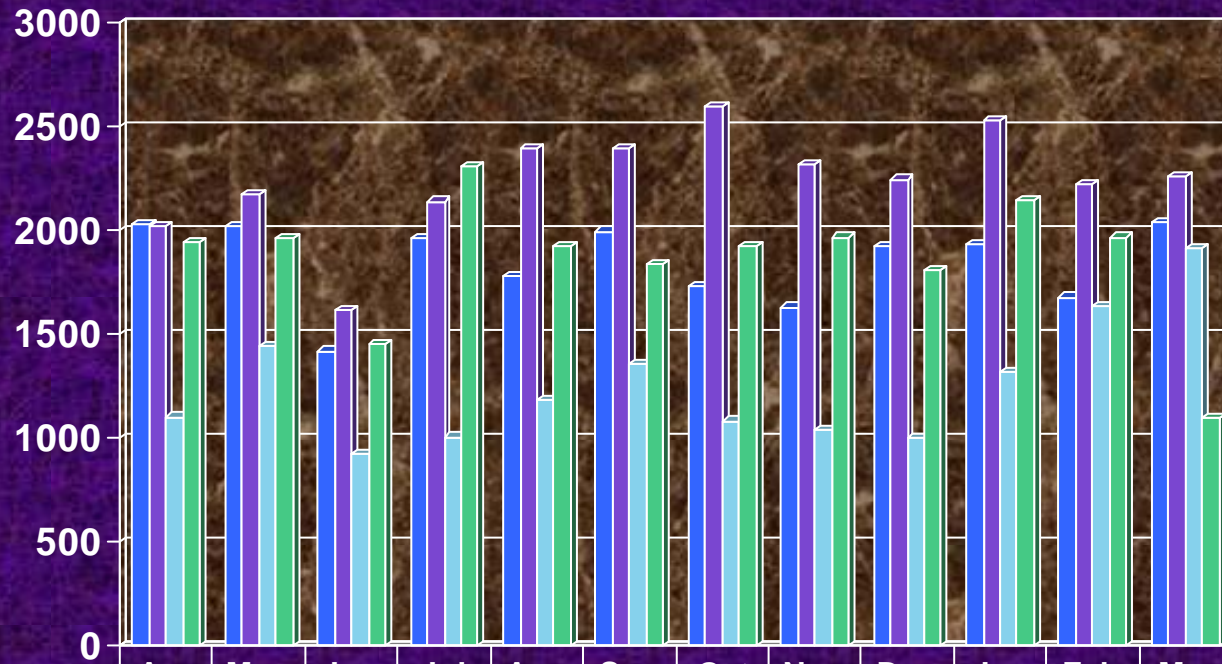
In-patient days 2007/2008

	Labor ward	Post-natal ward	Female – Med	Male Med	Mixed med	Peads	Female surg	Male-Surg	Mixed Surg	Tot :usable beds
Apr	338	1694	944	774	302	1100	979	834	133	359
May	394	1628	993	960	261	1441	948	955	79	359
Jun	308	1111	685	759	171	922	705	699	51	359
Jul	391	1568	852	1076	211	1005	1060	1010	241	359
Aug	325	1452	1036	1116	239	1183	976	945	77	359
Sep	270	1726	1074	1124	194	1359	849	865	126	359
Oct	307	1421	1210	1108	276	1083	1131	648	145	359
Nov	358	1272	1110	993	241	1042	1098	690	179	359
Dec	389	1532	1094	980	172	1031	812	871	124	359
Jan	333	1602	1135	1129	268	1314	1066	889	189	359
Feb	315	1363	1023	1031	171	1638	1014	835	118	359
Mar	342	1695	960	935	369	1094	1017	824	73	359
TOTAL	4070	18064	12116	11985	2875	14212	11655	10065	1535	359
USABLE BEDS	23	55	42	43	22	73	42	42	17	359



KwaZulu-Natal Department of Health

INPATIENT DAYS VRYHEID DISTRICT HOSPITAL 2007/2008

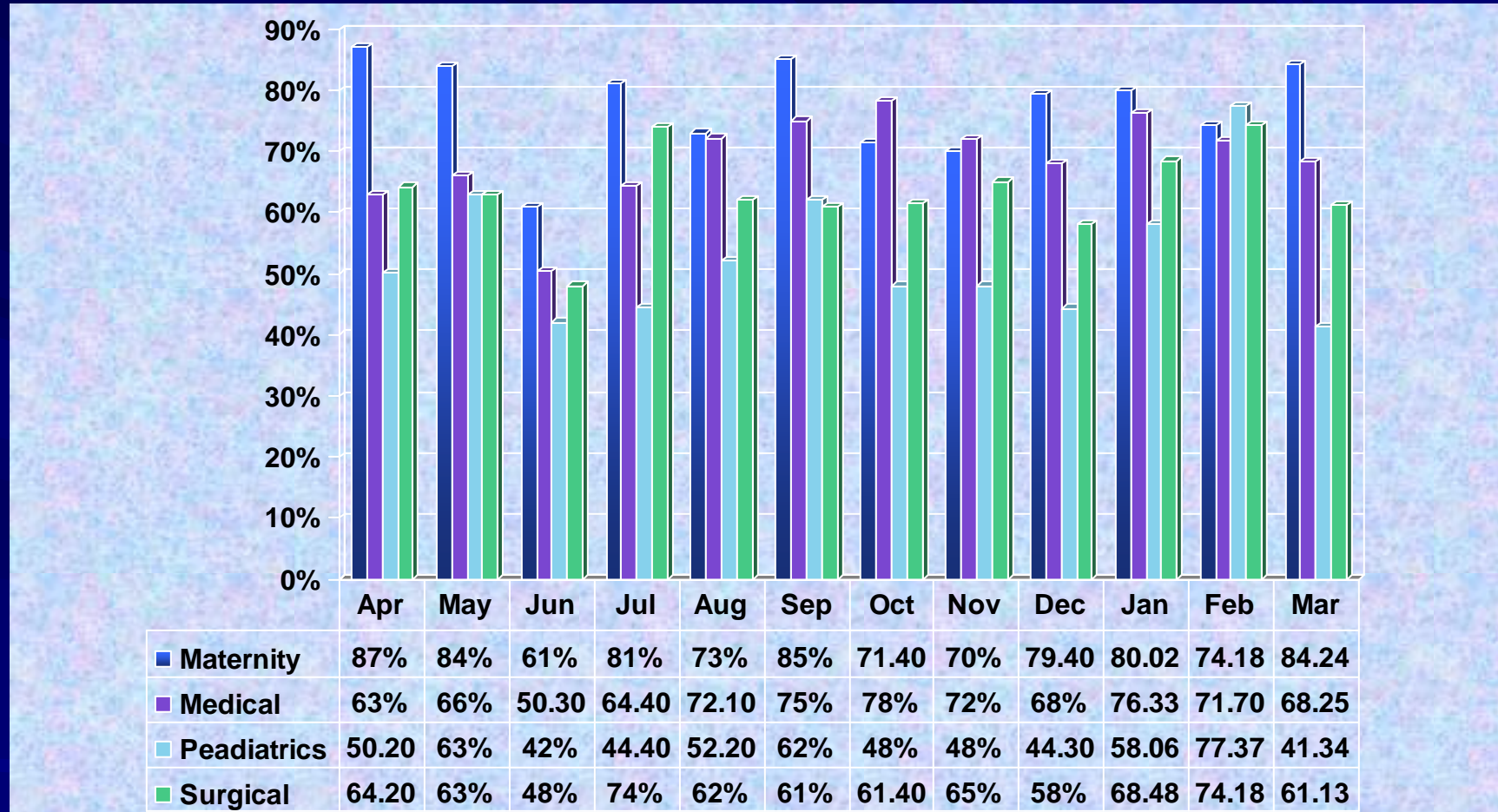


	Apr	May	Jun	Jul	Aug	Sep	Oct	Nov	Dec	Jan	Feb	Mar
Maternity	2030	2022	1419	1959	1777	1996	1728	1630	1921	1935	1678	2037
Medical	2017	2176	1615	2139	2391	2392	2594	2314	2246	2532	2225	2264
Paediatrics	1100	1441	922	1005	1183	1359	1082	1042	1003	1314	1638	1914
Surgical	1946	1965	1455	2311	1927	1840	1924	1967	1807	2144	1967	1094



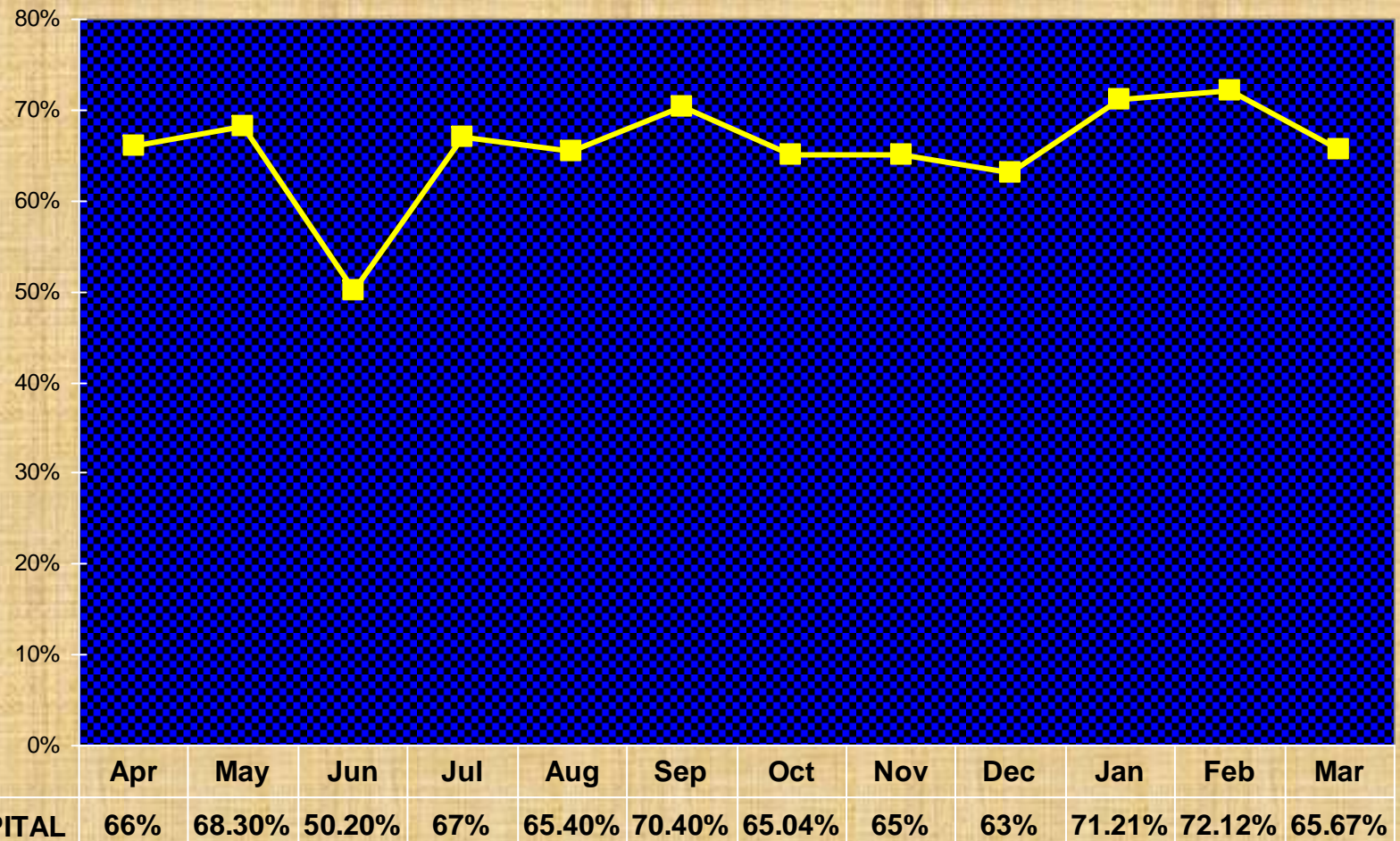
*K*waZulu-Natal Department of Health

BED OCCUPANCY RATE 2007-2008 (WARDS)



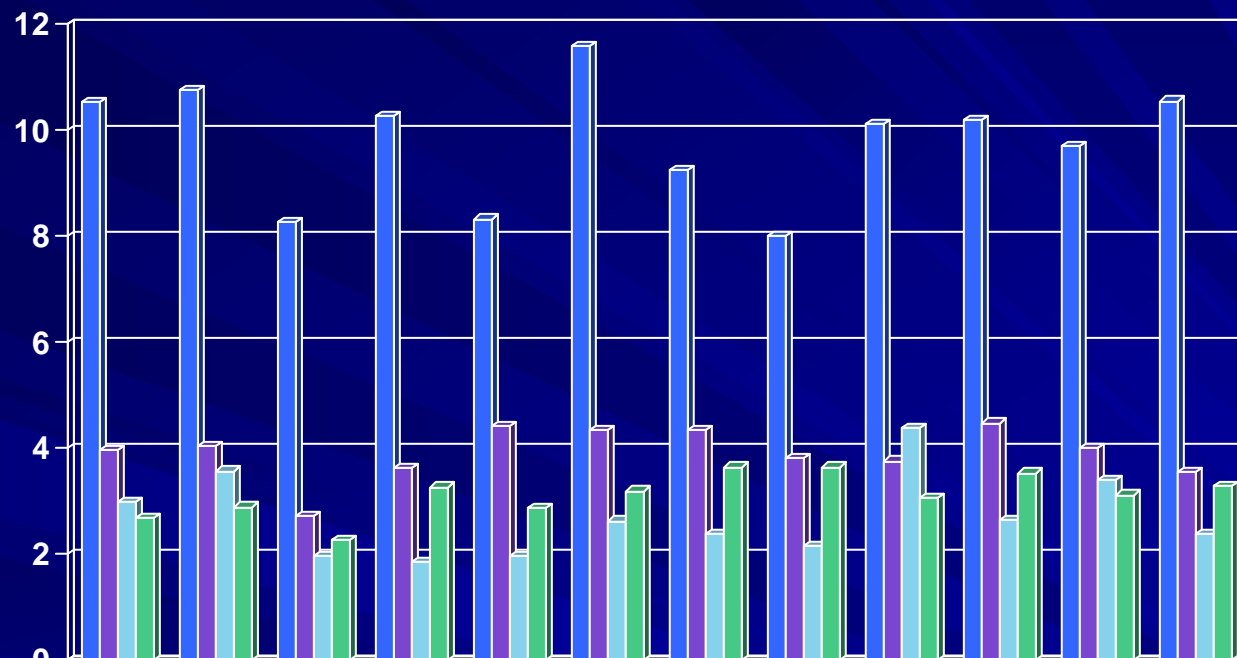
*K*waZulu-Natal Department of Health

Overall Bed Occupancy Rate (Hospital) 2007-2008



*K*waZulu-Natal Department of Health

Bed Turnover Rate 2007/2008



	Apr	May	Jun	Jul	Aug	Sep	Oct	Nov	Dec	Jan	Feb	Mar
Maternity Wards	10.53	10.77	8.27	10.26	8.32	11.6	9.26	7.99	10.13	10.18	9.71	10.55
Medical Wards	3.97	4.04	2.71	3.61	4.42	4.35	4.35	3.82	3.75	4.47	4	3.55
Paediatric Ward	2.97	3.56	1.96	1.85	1.95	2.62	2.38	2.14	4.38	2.63	3.4	2.38
Surgical Wards	2.68	2.88	2.25	3.26	2.87	3.19	3.64	3.64	3.05	3.53	3.11	3.27



*K*waZulu-Natal Department of Health

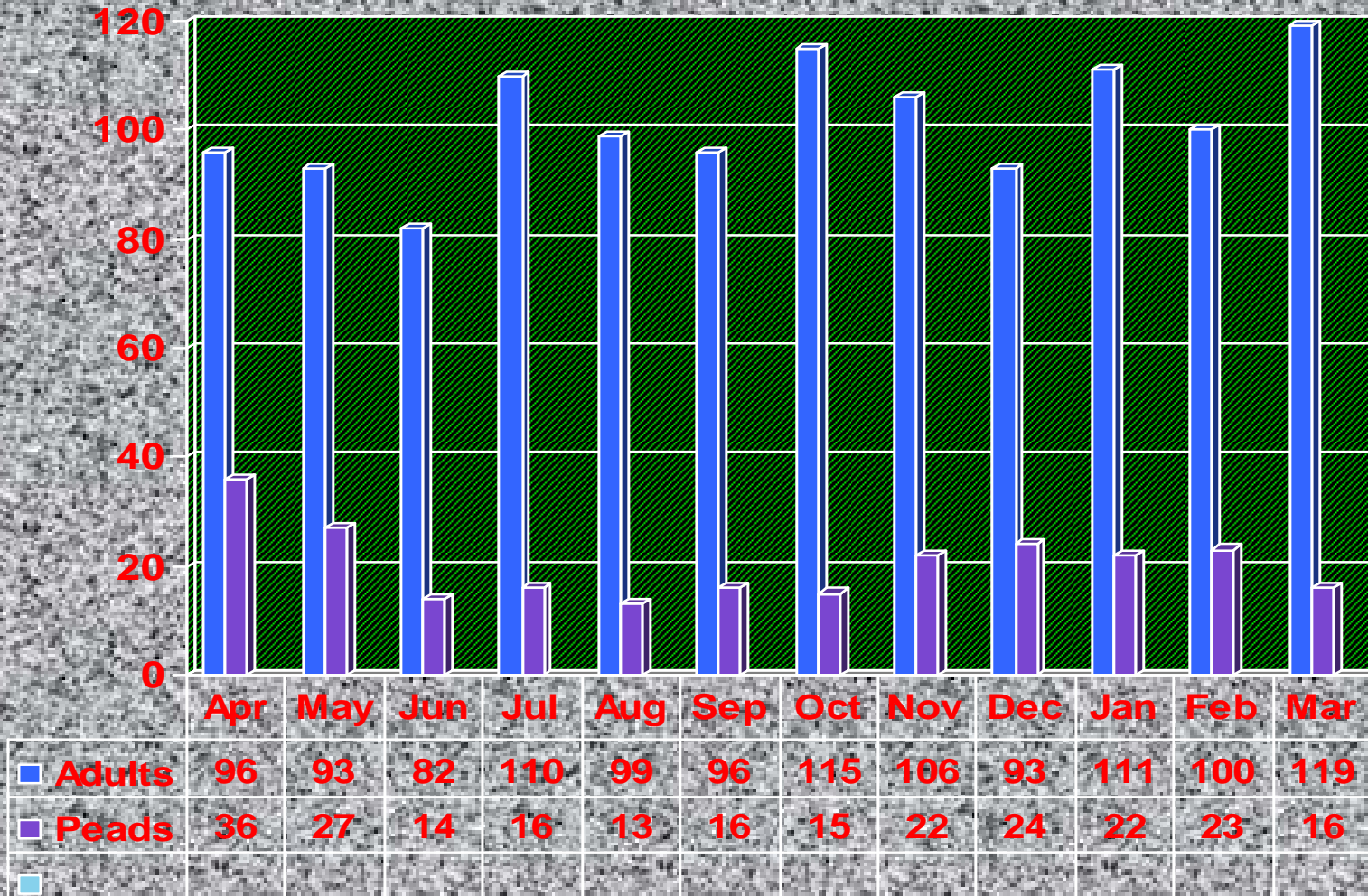
SEPARATIONS 2007/2008

MONTH	DISCHARGES	DEATHS	TRANSFER OUT	(TOTAL) SEPARATIONS
APR	1579	132	23	1734
MAY	1664	120	39	1823
JUN	1193	96	16	1305
JUL	1502	126	22	1650
AUG	1399	114	39	1552
SEP	1721	113	47	1881
OCT	1557	132	39	1728
NOV	1399	128	29	1556
DEC	1595	118	18	1731
JAN	1612	133	76	1821
FEB	1530	123	94	1747
MAR	1547	134	26	1707



*K*waZulu-Natal Department of Health

DEATHS 2007-2008



*K*waZulu-Natal Department of Health

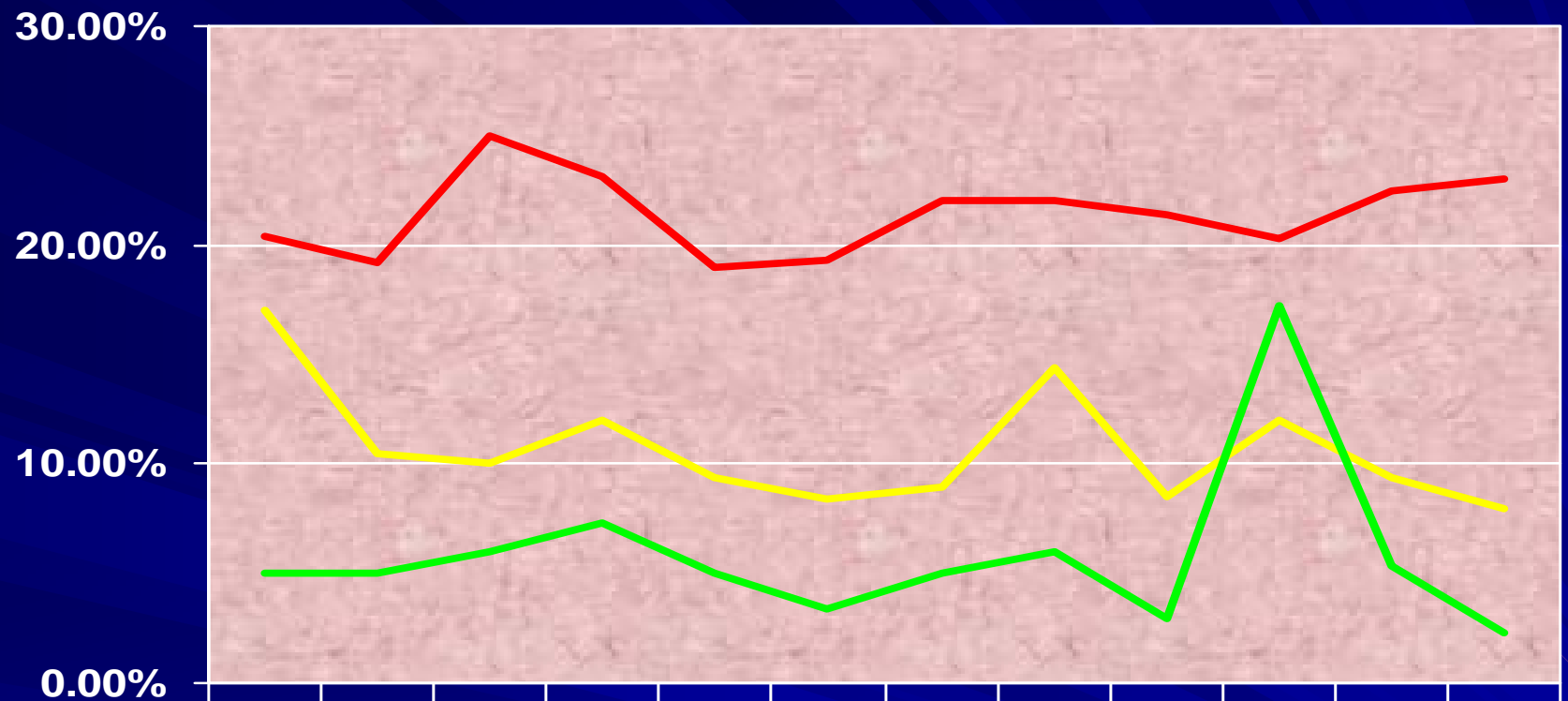
DEATHS VRYHEID DISTRICT HOSPITAL 2007-2008

MONTH	MEDICAL WARDS	PEADIATRIC WARD	SURGICAL WARDS
APR	84	36	12
MAY	81	27	12
JUN	69	14	13
JUL	87	16	23
AUG	86	13	13
SEP	86	16	10
OCT	98	15	17
NOV	86	22	20
DEC	85	24	8
JAN	88	22	22
FEB	85	23	15
MAR	110	16	7



*K*waZulu-Natal Department of Health

Death Rate 2007/2008



	Apr	May	Jun	Jul	Aug	Sep	Oct	Nov	Dec	Jan	Feb	Mar
Medical	20.4	19.1	25.0	23.0	19.0	19.3	22.0	22.0	21.4	20.2	22.4	23.0
Paediatrics	17.0	10.4	10.0	12.0	9.35	8.42	9.00	14.3	8.49	12.0	9.43	8.00
Surgical	5.00	5.00	6.00	7.26	5.00	3.37	5.00	6.00	3.00	17.1	5.40	2.30



*K*waZulu-Natal Department of Health

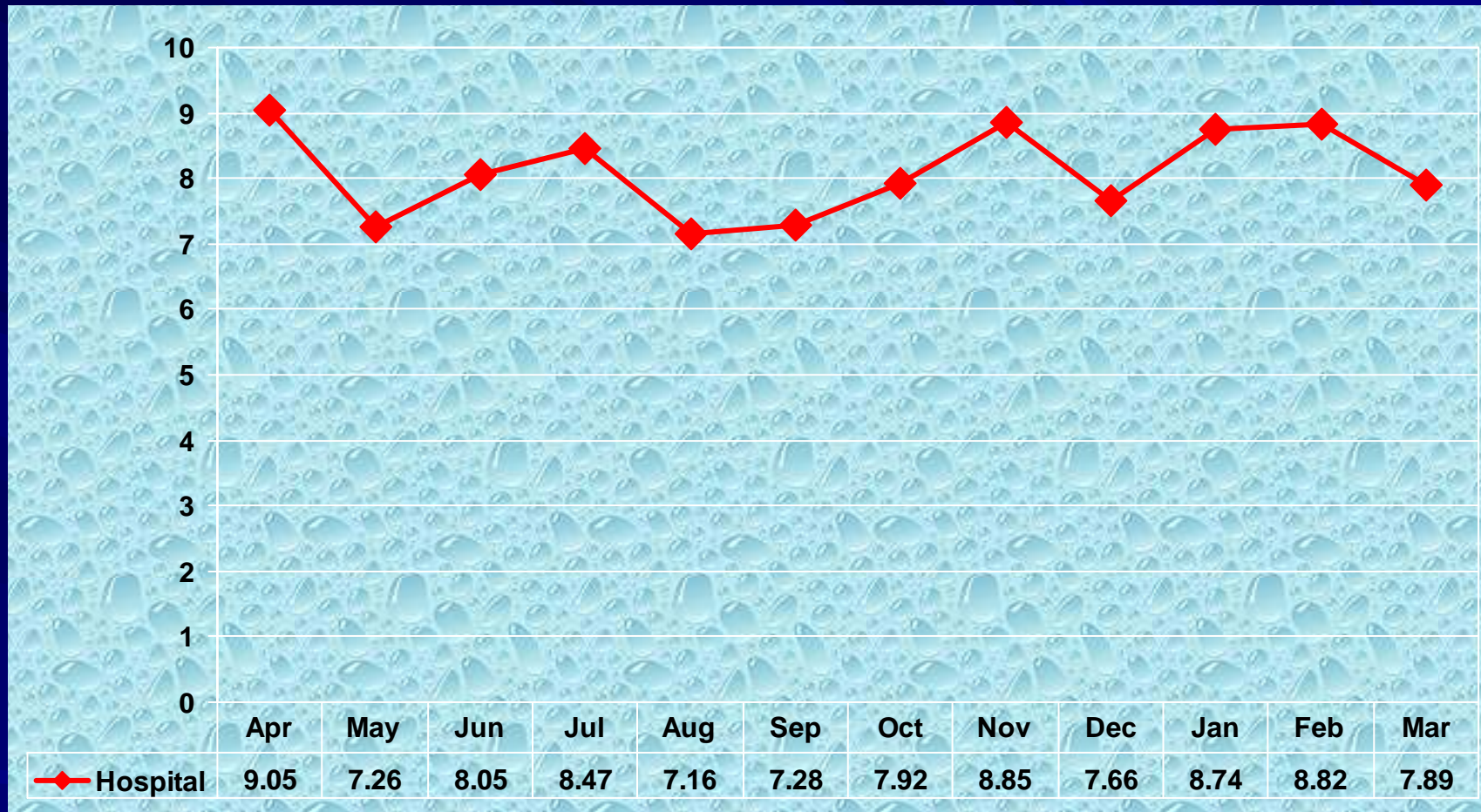
OVER ALL HOSPITAL DEATHS 2007/2008

MONTH	ADULT DEATHS	PEADIATRIC DEATHS
APR	96	36
MAY	93	27
JUN	82	14
JUL	110	16
AUG	99	13
SEP	96	16
OCT	115	15
NOV	106	22
DEC	93	24
JAN	110	22
FEB	100	23
MAR	117	16



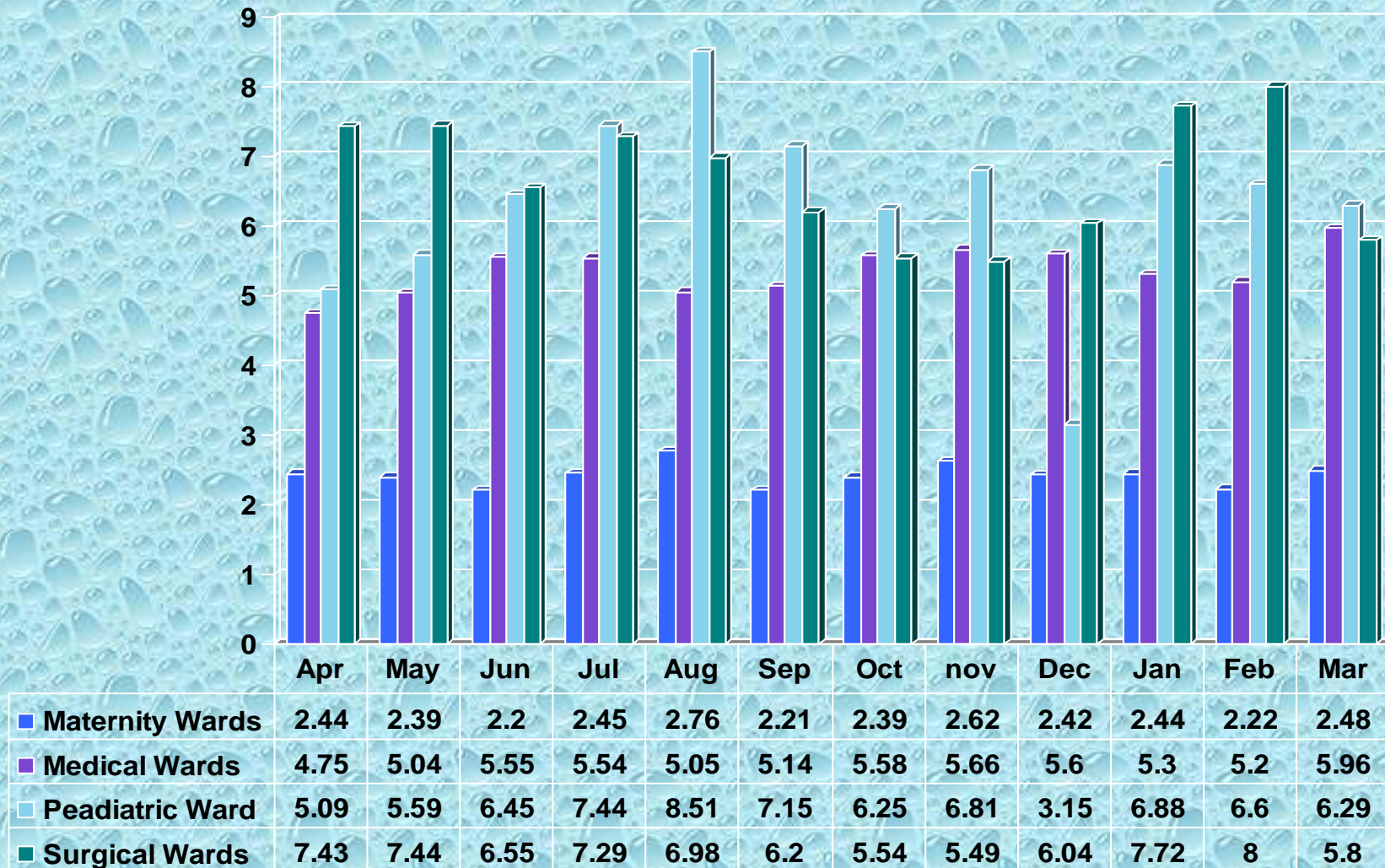
*K*waZulu-Natal Department of Health

Overall Hospital Death Rate 2007/2008



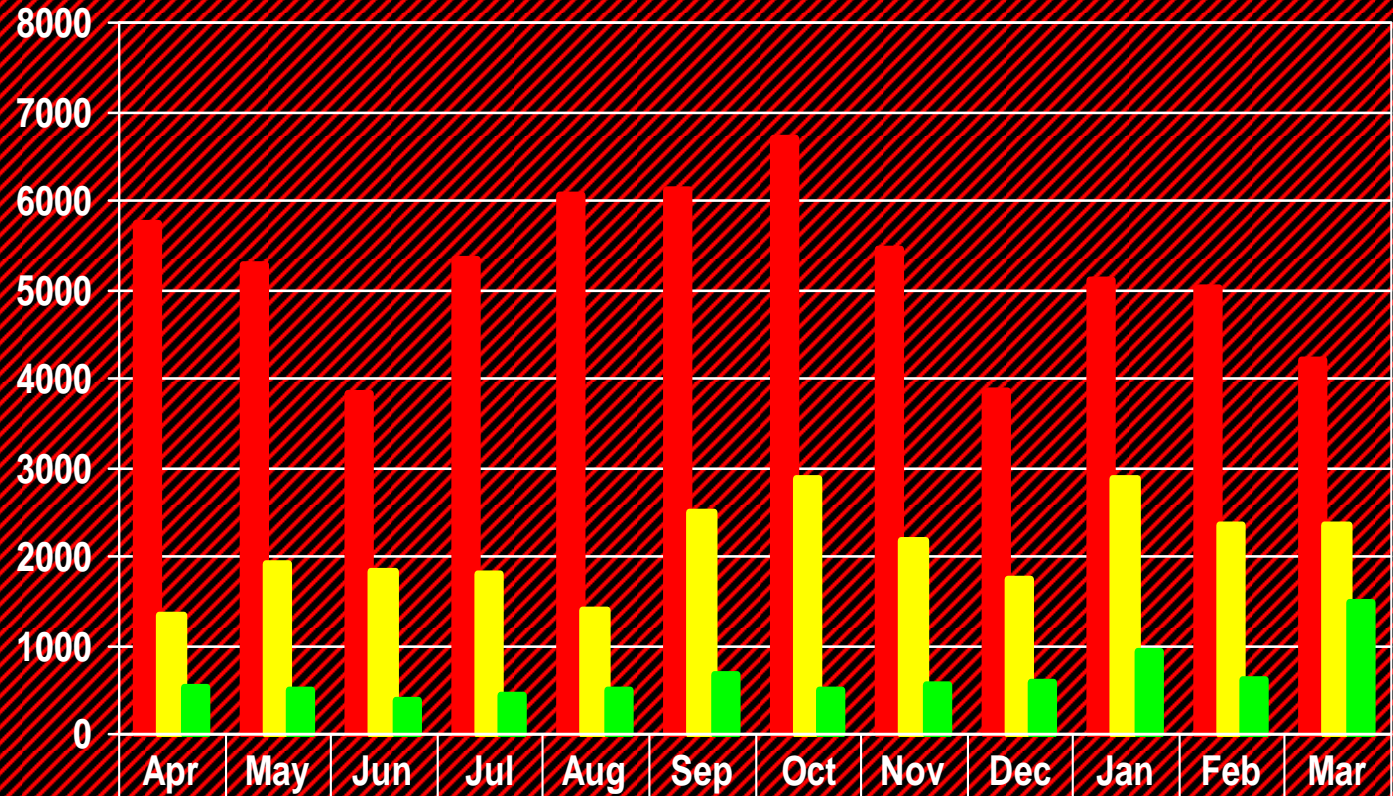
*K*waZulu-Natal Department of Health

AVERAGE LENGTH OF STAY 2007/2008



*K*waZulu-Natal Department of Health

OPD 2007/2008



	Apr	May	Jun	Jul	Aug	Sep	Oct	Nov	Dec	Jan	Feb	Mar
General OPD Headcount All Ages	5749	5280	3831	5338	6052	6111	6701	5438	3859	5108	5001	4189
CDC Headcount	1319	1925	1816	1797	1380	2488	2856	2175	1734	2856	2334	2334
Casualty Head count	518	496	380	433	507	655	507	541	579	940	620	1482



*K*waZulu-Natal Department of Health

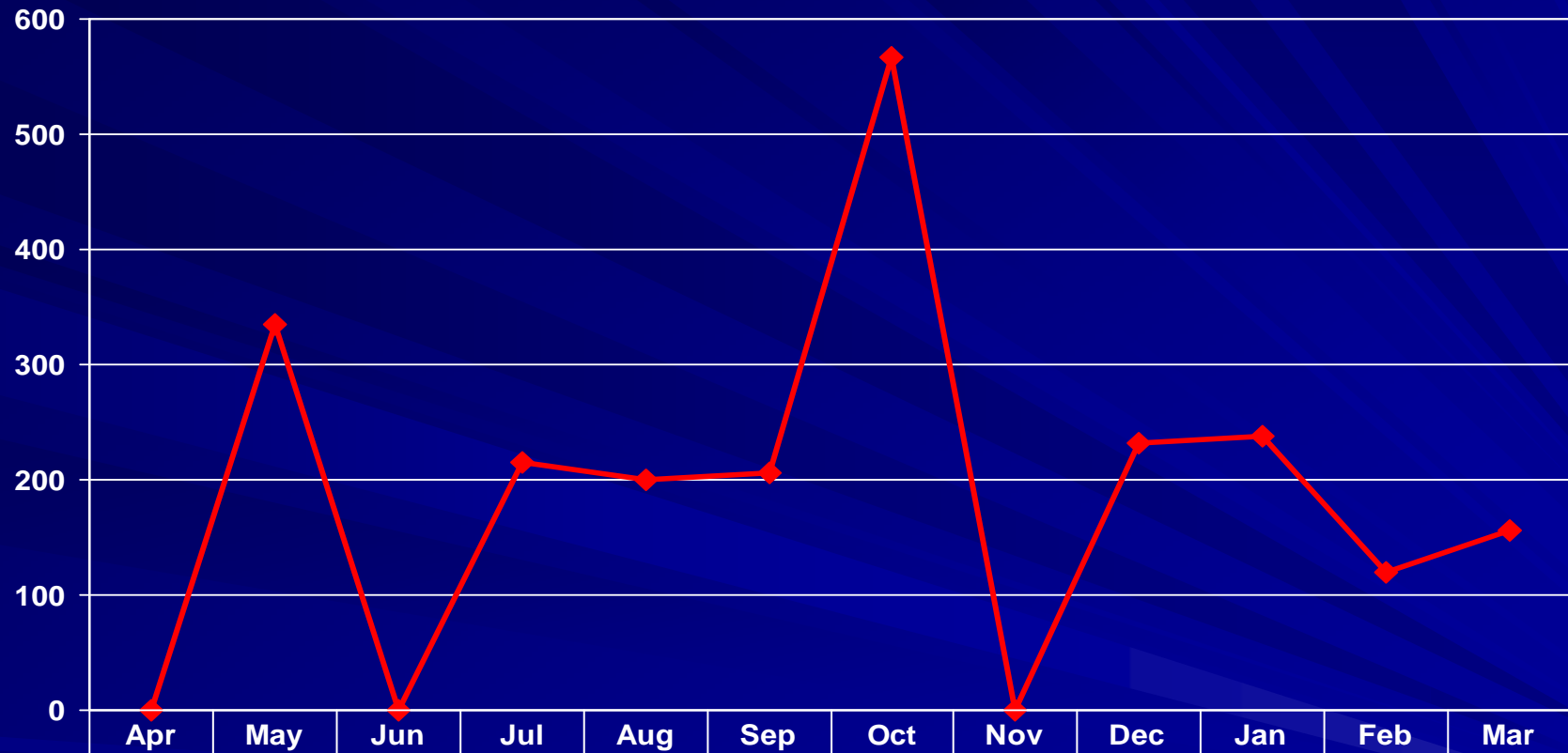
Maternal Deaths 2007/2008

Month	Number of Deaths
Apr	0
May	2
Jun	0
Jul	1
Aug	2
Sep	1
Oct	2
Nov	0
Dec	1
Jan	1
Feb	0
Mar	01



*K*waZulu-Natal Department of Health

Maternal Mortality Rate 2007/2008



	Apr	May	Jun	Jul	Aug	Sep	Oct	Nov	Dec	Jan	Feb	Mar
— Hospital	0	335	0	214.57	200.15	206.61	566.57	0	232.56	238.09	119.05	155.36



*K*waZulu-Natal Department of Health

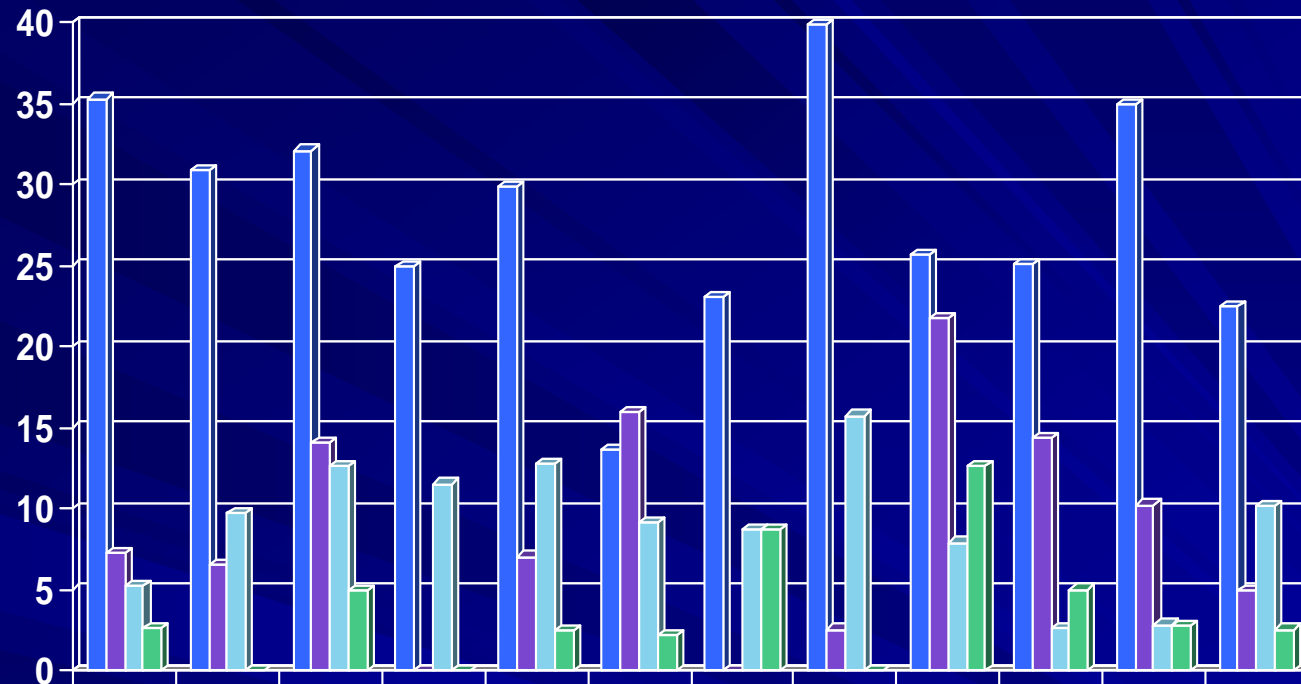
Neo-Natal Deliveries 2007/2008

Month	survive	Early Neo-Natal death	Late Neo-Natal Death	Stillborn
Apr	536	3	0	14
May	581	4	0	12
Jun	558	7	0	12
Jul	530	5	0	6
Aug	406	6	0	9
Sep	471	5	0	8
Oct	345	3	0	5
Nov	347	5	1	8
Dec	411	8	0	11
Jan	394	3	0	13
Feb	397	2	1	14
Mar	425	5	0	6



*K*waZulu-Natal Department of Health

Perinatal & Neo-natal Mortality Rate 2007/2008



	Apr	May	Jun	Jul	Aug	Sep	Oct	Nov	Dec	Jan	Feb	Mar
■ Peri-Natal ≥ 100	35.3	30.9	32.1	24.9	29.9	13.6	23	39.9	25.7	25.1	34.9	22.5
■ Peri-natal < 100	7.2	6.5	14.1	0	7	15.9	0	2.5	21.7	14.3	10.2	4.9
■ Neo-Natal ≥ 100	5.2	9.7	12.6	11.5	12.7	9.1	8.7	15.7	7.9	2.6	2.8	10.1
■ Neonatal < 100	2.6	0	4.9	0	2.4	2.2	8.7	0	12.6	5	2.7	2.5



*K*waZulu-Natal Department of Health

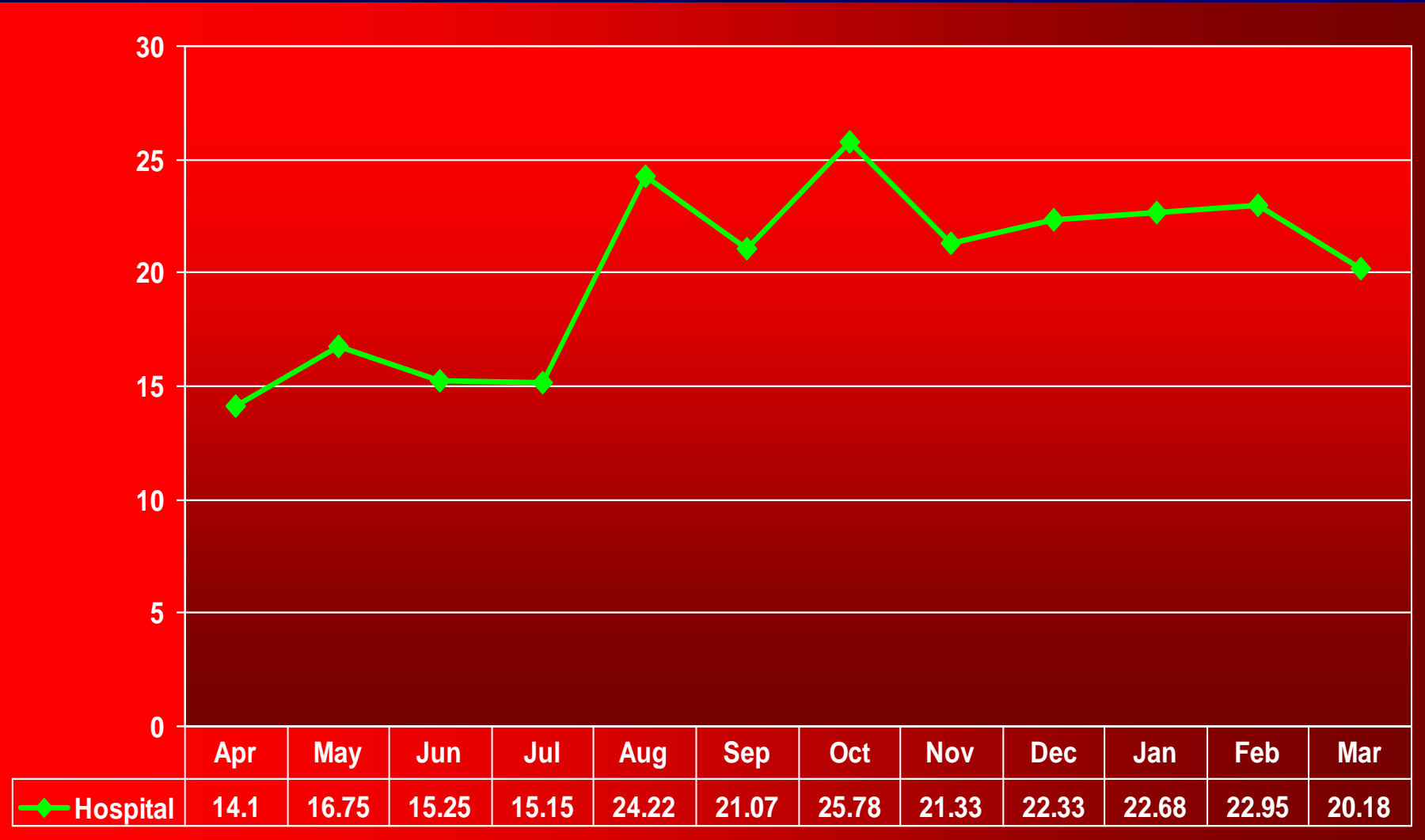
Caesarean Section 2007/2008

Month	Number of Caesareans Done
Apr	78
May	100
Jun	88
Jul	82
Aug	102
Sep	102
Oct	91
Nov	77
Dec	96
Jan	93
Feb	95
Mar	88



*K*waZulu-Natal Department of Health

Caesarean Section Rate 2007/2008



*K*waZulu-Natal Department of Health

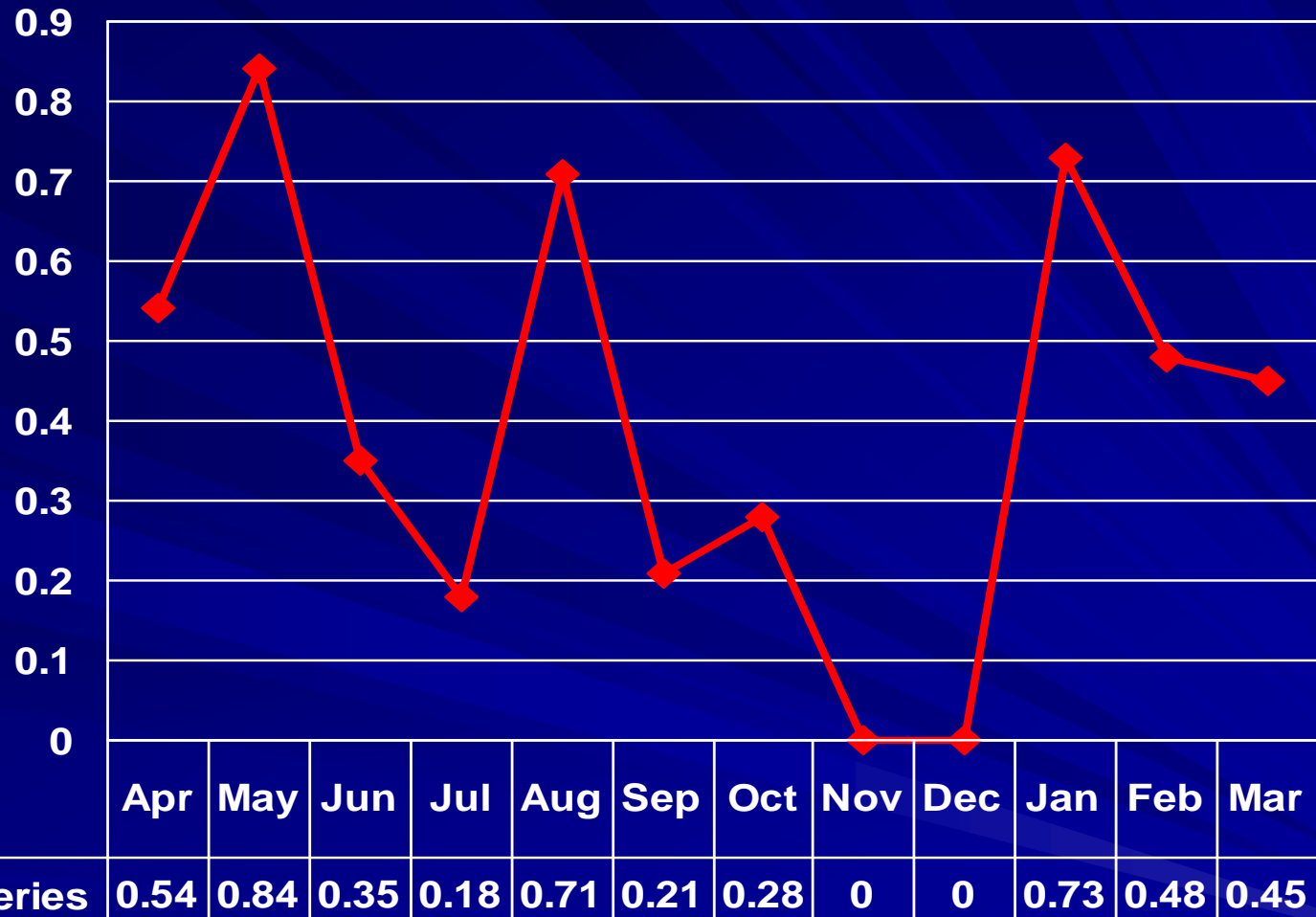
Assisted Deliveries 2007/2008

Month	Number of Assisted Deliveries
Apr	3
May	5
Jun	2
Jul	1
Aug	3
Sep	1
Oct	1
Nov	0
Dec	0
Jan	3
Feb	2
Mar	2



*K*waZulu-Natal Department of Health

Assisted Delivery rate 2007/2008



*K*waZulu-Natal Department of Health

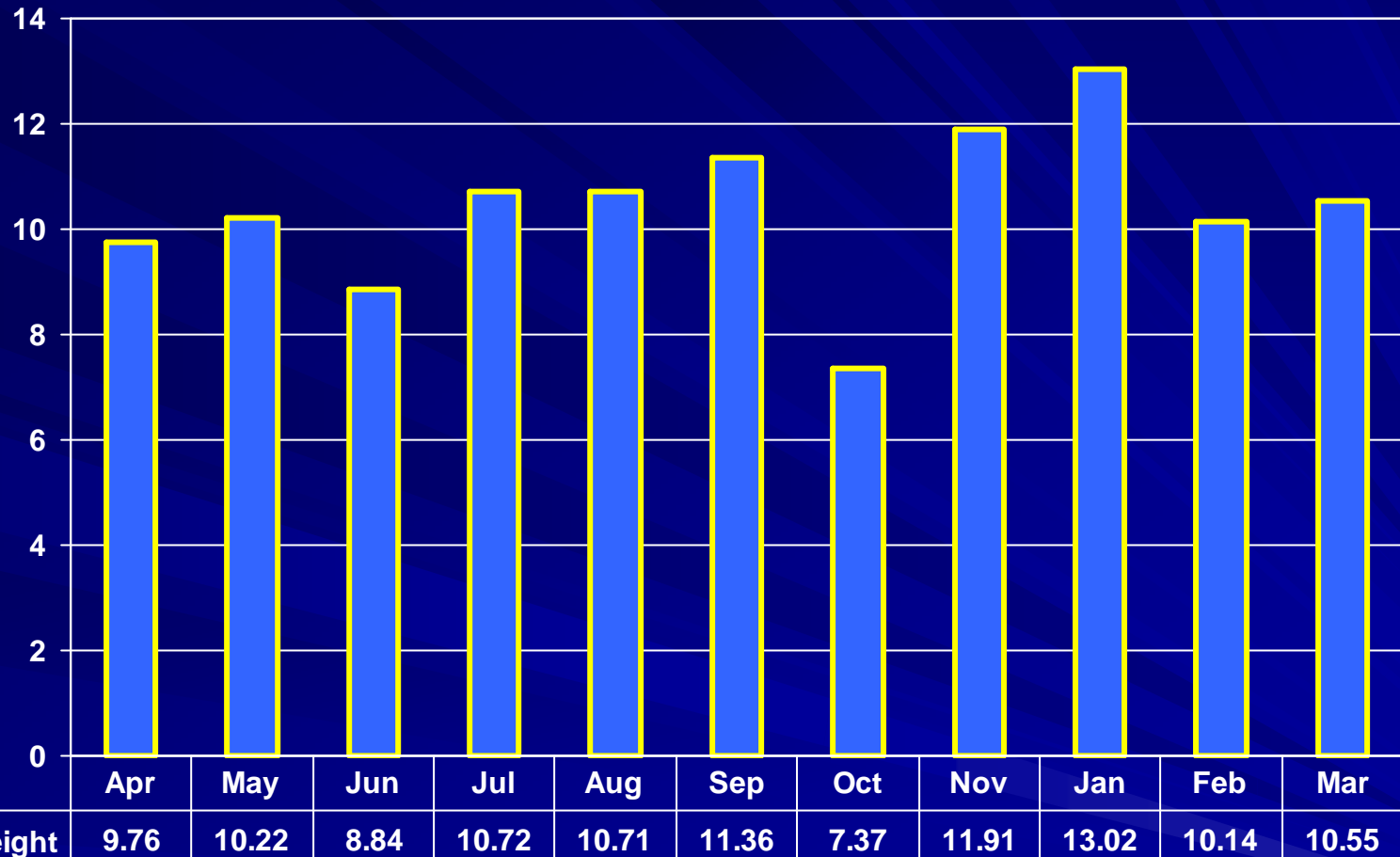
Low Birth Weight 2007/2008

Month	Number of Births <2.5kg
Apr	54
May	61
Jun	51
Jul	58
Aug	53
Sep	55
Oct	26
Nov	43
Dec	56
Jan	52
Feb	42
Mar	46



*K*waZulu-Natal Department of Health

Low Birth Weight rate 2007/2008



*K*waZulu-Natal Department of Health

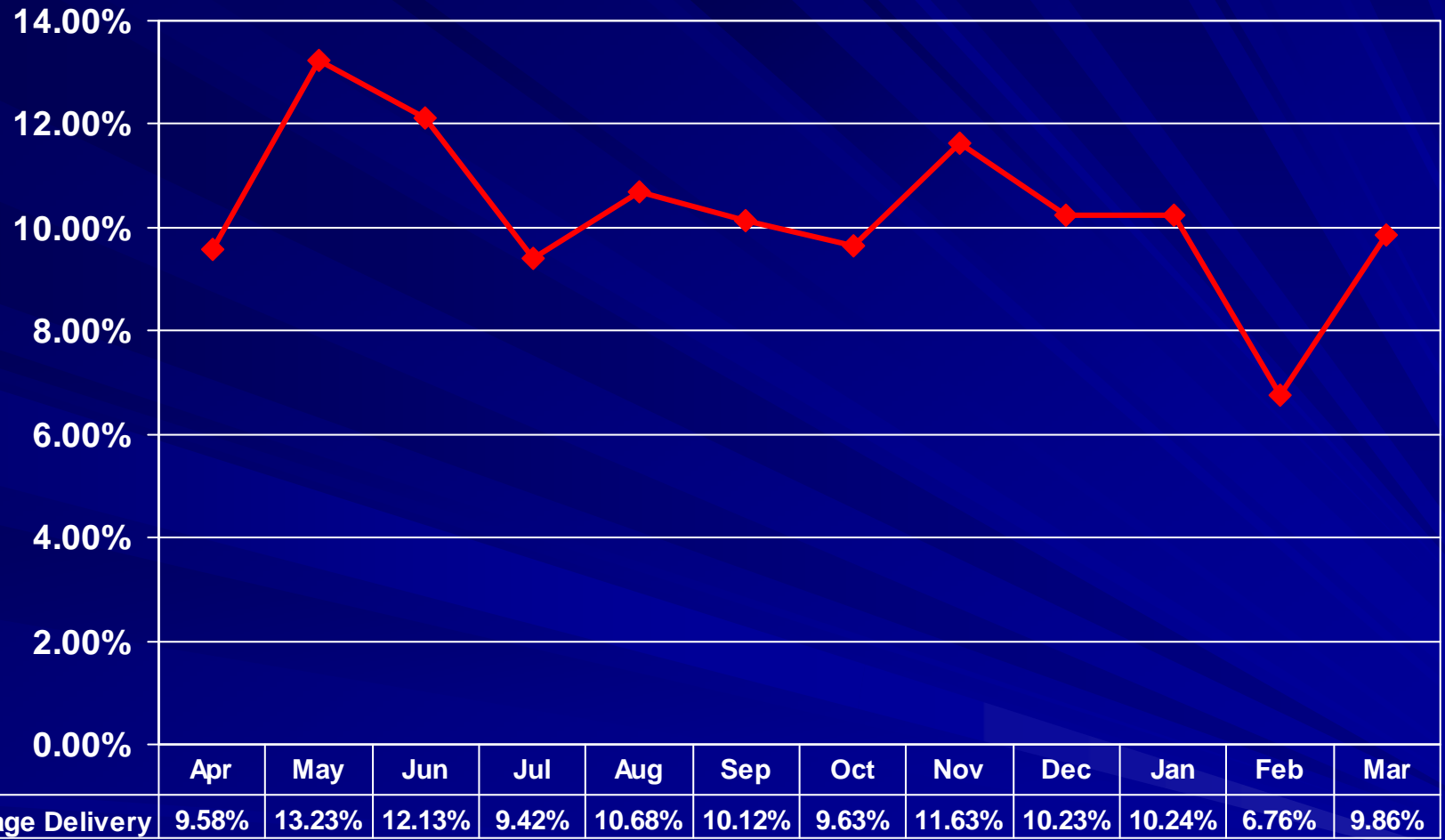
Teenage Delivery 2007/2008

Month	Number of Teenagers Delivered
Apr	53
May	79
Jun	70
Jul	51
Aug	45
Sep	49
Oct	34
Nov	42
Dec	44
Jan	42
Feb	28
Mar	43



*K*waZulu-Natal Department of Health

Teenage Delivery Rate 2007/2008



*K*waZulu-Natal Department of Health

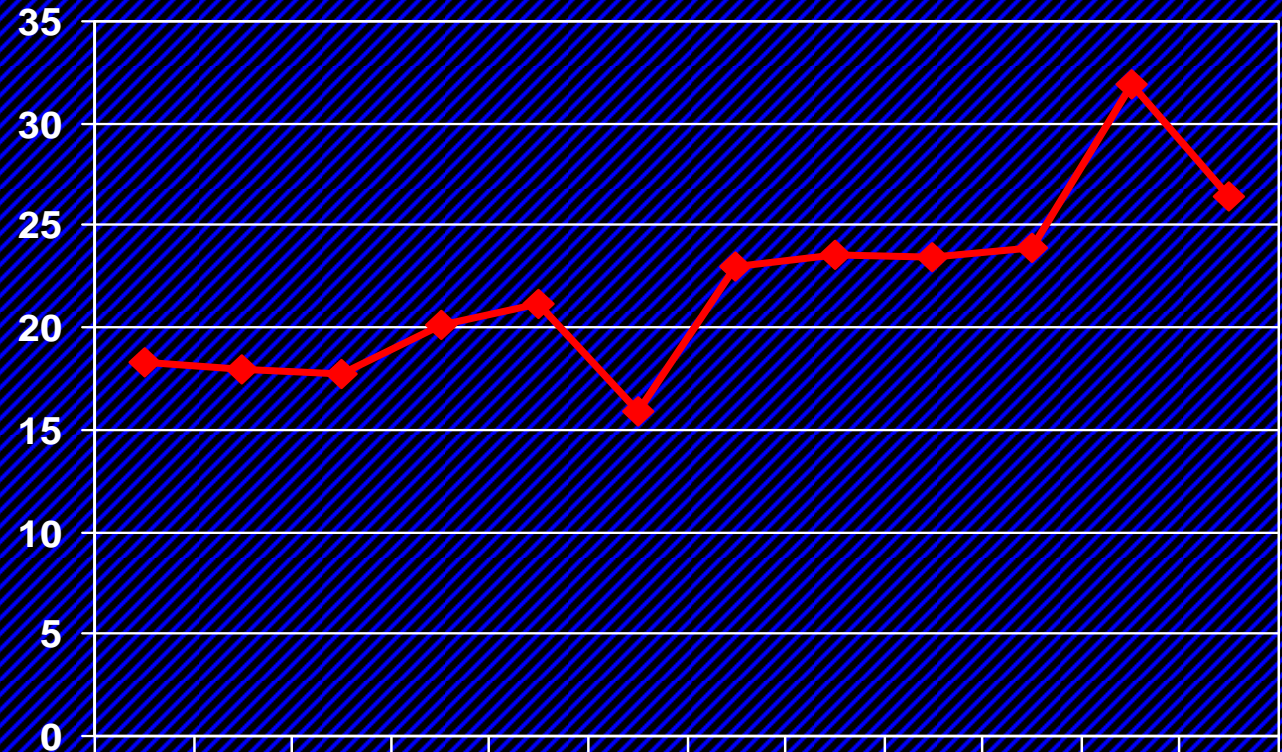
Live Birth in Facility to HIV Positive Mother 2007/2008

Month	Number of live Births In Facility to HIV positive Mother
Apr	101
May	107
Jun	102
Jul	109
Aug	89
Sep	77
Oct	81
Nov	85
Dec	101
Jan	98
Feb	121
Mar	115



*K*waZulu-Natal Department of Health

Live birth to HIV Positive Mothers (Rate) 2007/2008

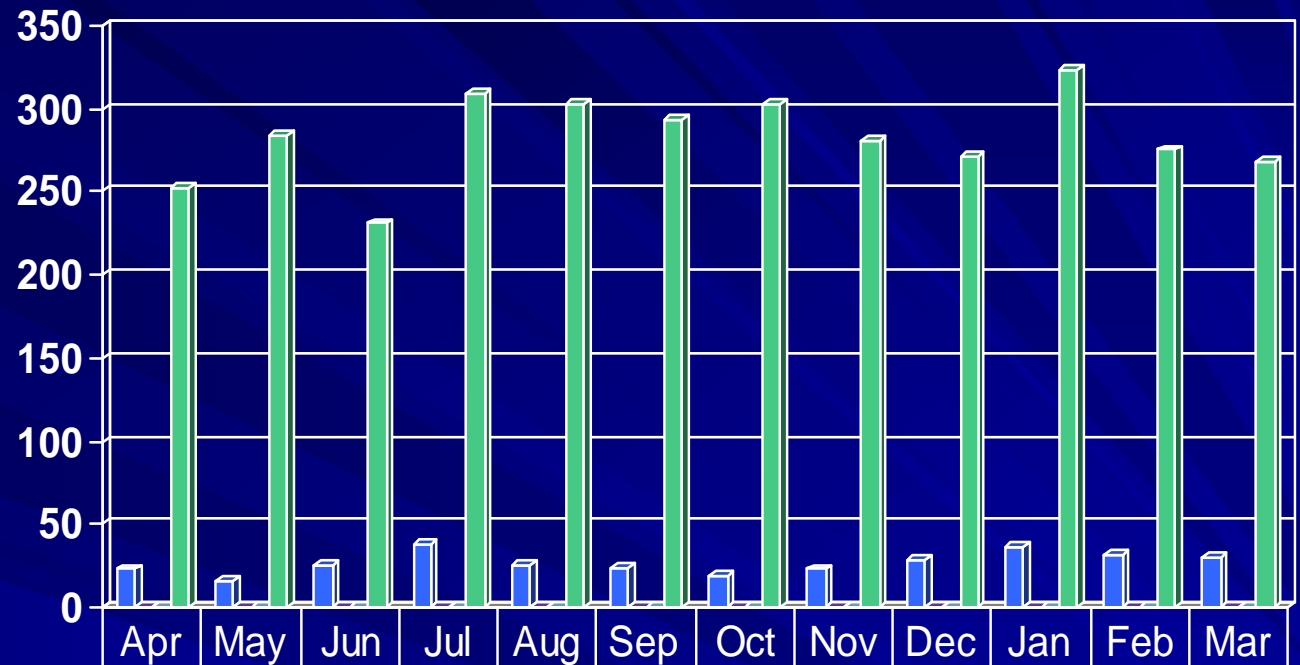


	Apr	May	Jun	Jul	aug	Sep	Oct	Nov	Dec	Jan	Feb	Mar
→ Live Birth to HIV Positive Mothers (Rate)	18.3	18	17.7	20.2	21.1	15.9	23	23.6	23.5	23.9	31.9	26.4



*K*waZulu-Natal Department of Health

Theatre 2007/2008

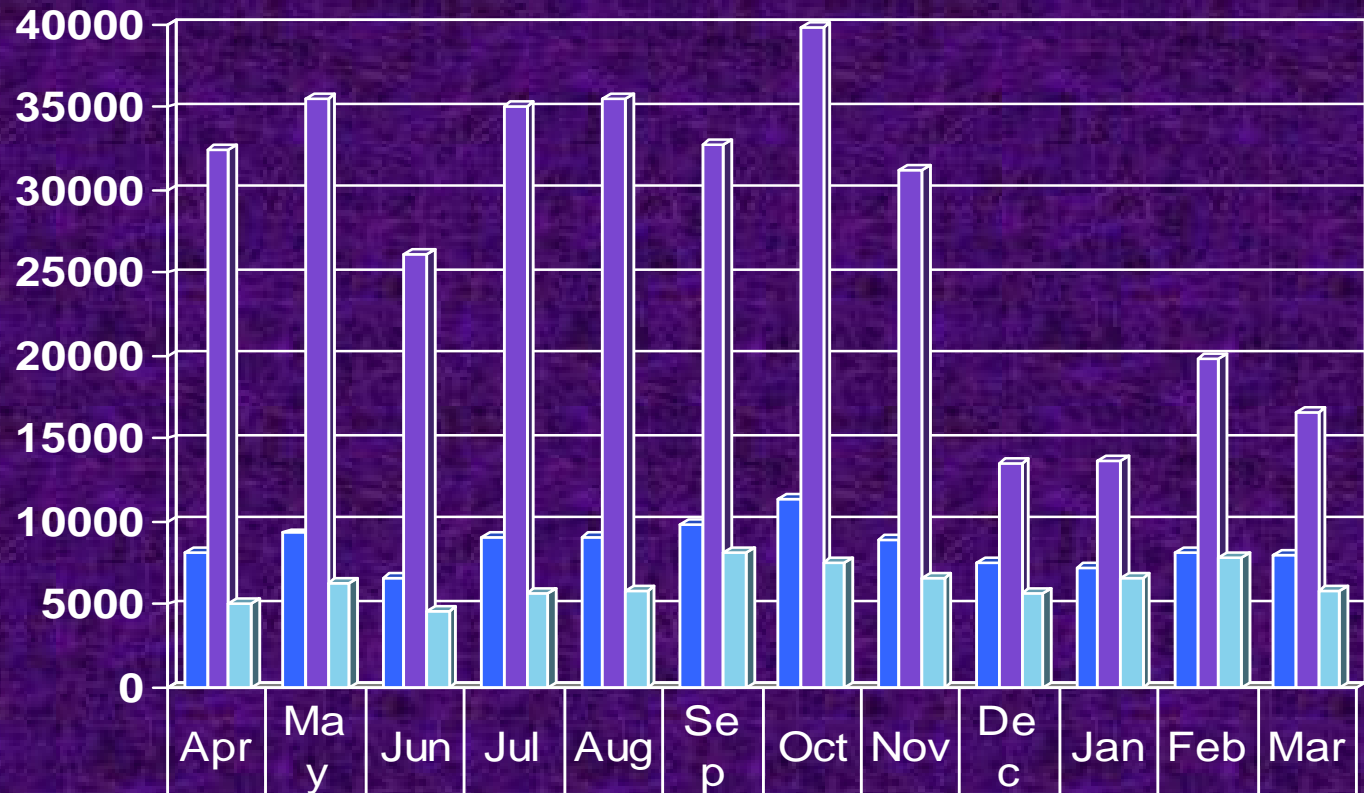


■ Sterilization-Female Tubal Ligation	23	16	25	38	25	24	19	23	29	37	31	30
■ Sterilization-male vasectomy	0	0	0	0	0	0	0	0	0	0	0	0
■ Catract operation done	0	0	0	0	0	0	0	0	0	0	0	0
■ Total Operations	252	284	231	309	303	293	303	281	271	323	275	268



*K*waZulu-Natal Department of Health

Pharmacy 2007/2008

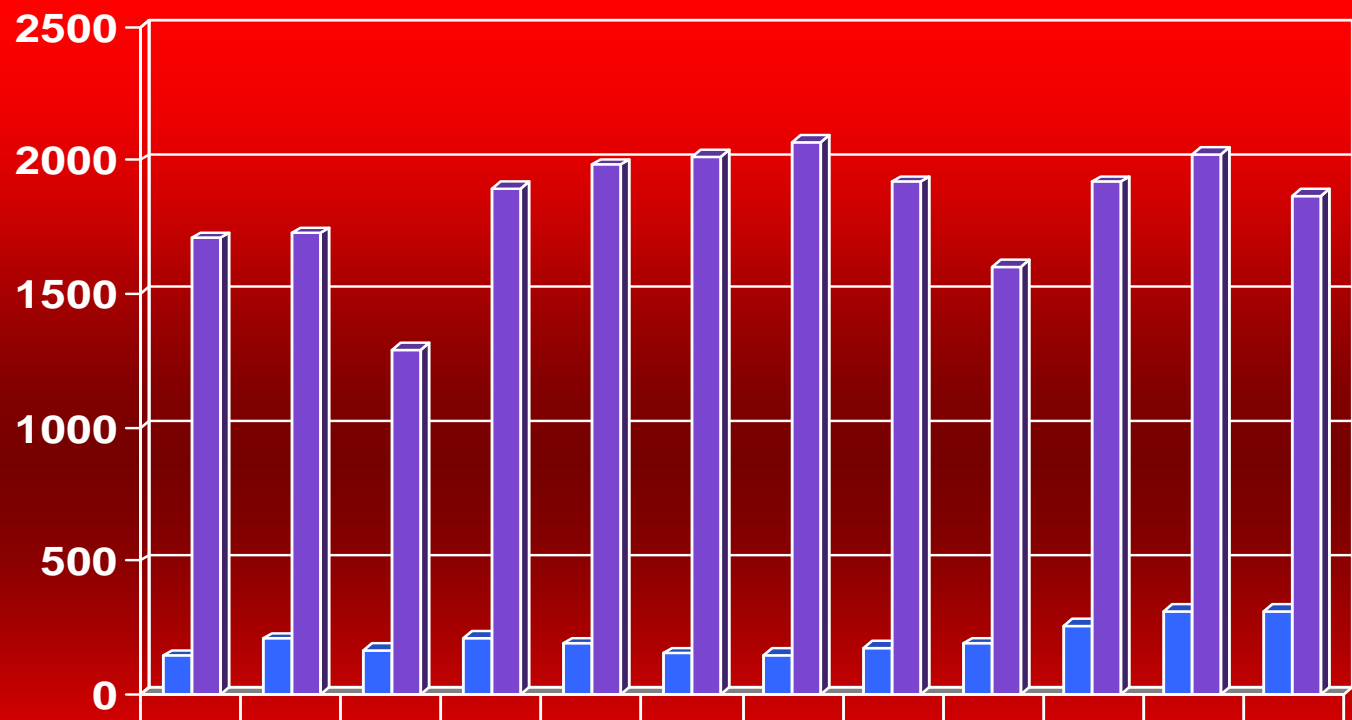


■ Number of Prescription	820	930	664	901	914	987	114	889	751	724	817	799
■ Number of items issued	324	354	260	350	355	327	397	311	134	136	197	165
■ Chronic Pink Card	504	627	456	575	589	813	754	656	563	661	788	583



*K*waZulu-Natal Department of Health

Radiology 2007/2008

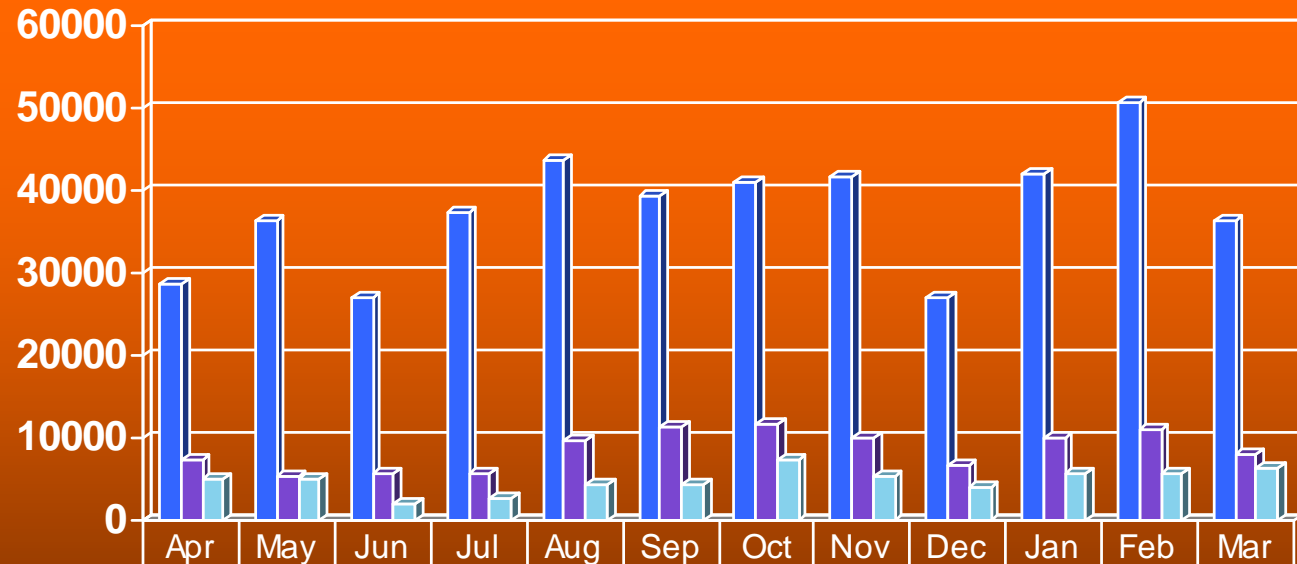


	Apr	May	Jun	Jul	Aug	Sep	Oct	Nov	Dec	Jan	Feb	Mar
Number of Ultrasounds	145	208	168	214	190	152	148	176	189	258	310	312
Number of X-rays	170	172	129	189	198	201	207	191	160	191	202	186



*K*waZulu-Natal Department of Health

Laboratory 2007/2008

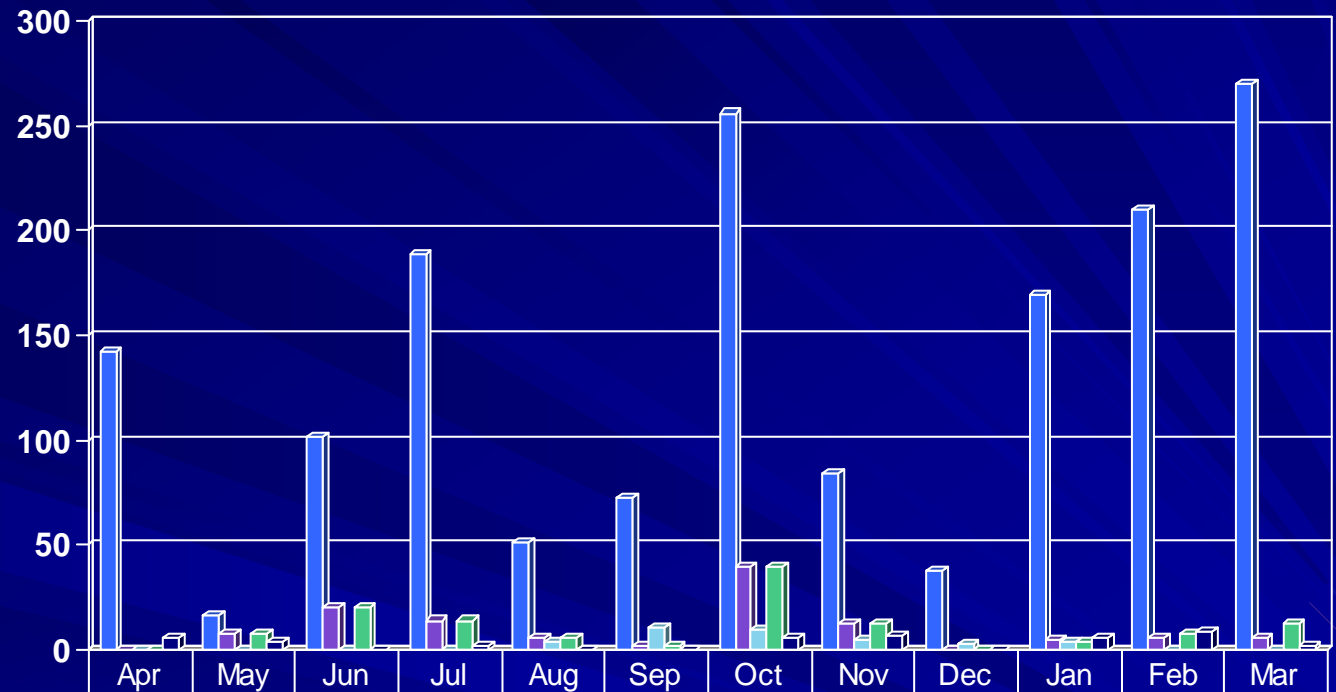


■ Total Test done	2867	3640	2713	3719	4374	3940	4107	4151	2711	4188	5072	3648
■ Total specimens taken	7170	5384	5784	5660	9767	1139	1177	9897	6777	9928	1093	8143
■ Specimens received from other facilities	5034	4856	2148	2605	4295	4432	7315	5474	4025	5681	5681	6186



*K*waZulu-Natal Department of Health

Rehabilitation 2007/2008

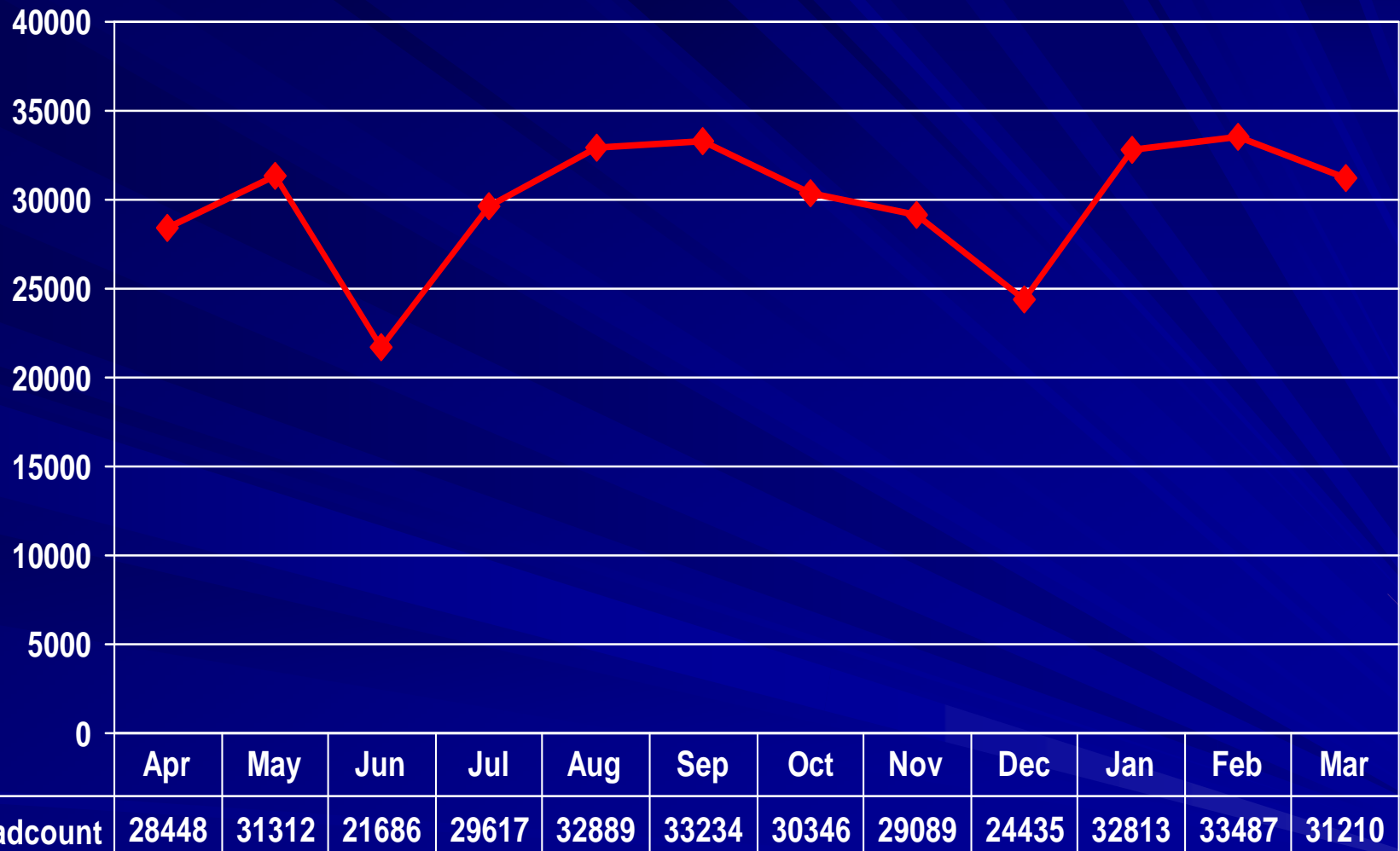


	Apr	May	Jun	Jul	Aug	Sep	Oct	Nov	Dec	Jan	Feb	Mar
Person with disability seeking health care	142	16	102	189	51	73	256	84	38	169	210	270
Wheelchair issued	0	8	20	14	6	2	40	13	0	5	6	6
Hearing Aid Issued	0	0	0	0	4	11	10	5	3	4	0	0
Walking Aid Issued	0	8	20	14	6	2	40	13	0	4	8	13
Person receiving Orthotics & Prosthodontics	6	4	0	2	0	0	6	7	0	6	9	2



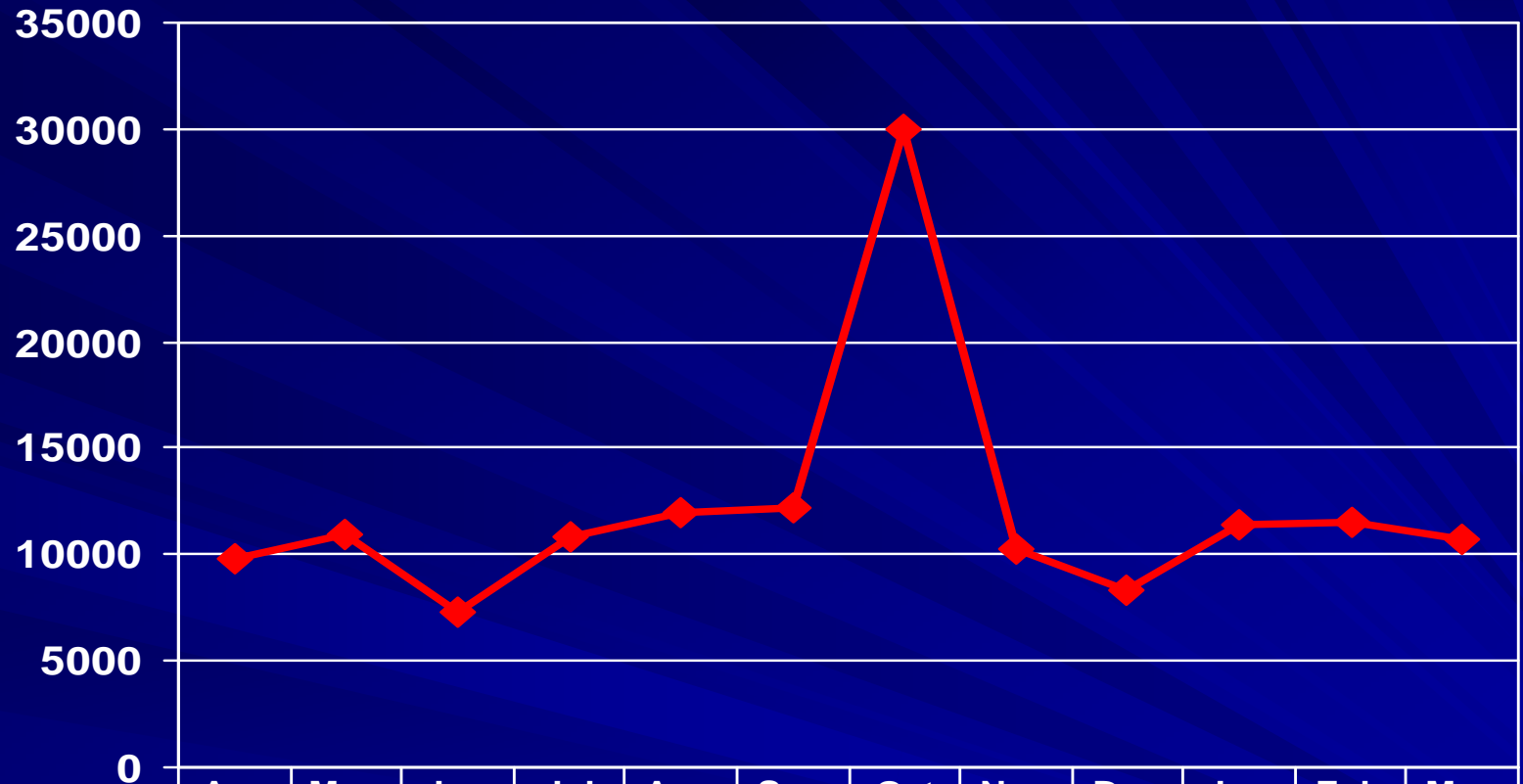
KwaZulu-Natal Department of Health

PHC Headcount 5 Yrs & Older 2007/2008



*K*waZulu-Natal Department of Health

PHC Headcount <5 2007/2008

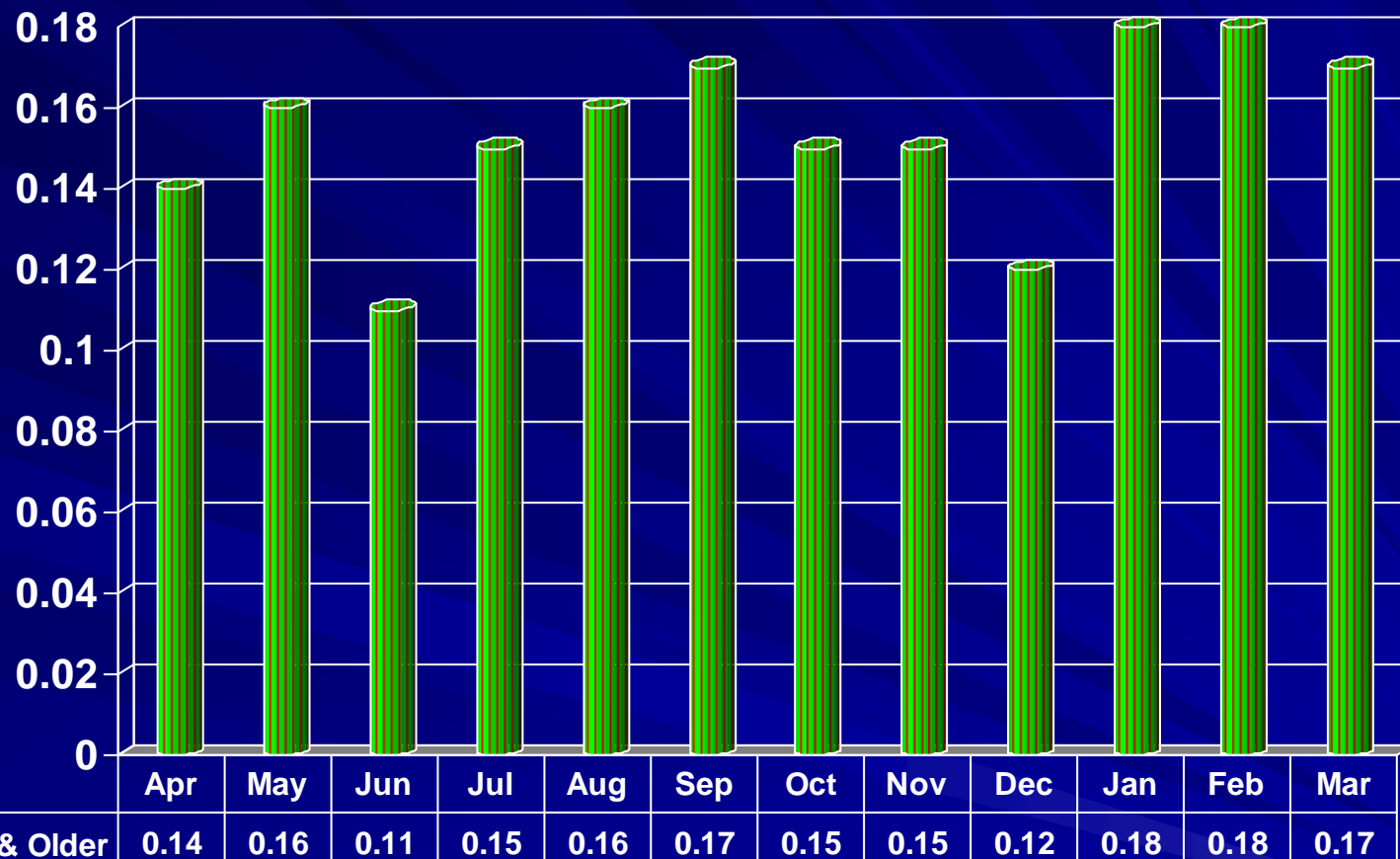


	Apr	May	Jun	Jul	Aug	Sep	Oct	Nov	Dec	Jan	Feb	Mar
◆ PHC Headcount	9784	10956	7268	10787	11954	12253	29944	10272	8376	11369	11514	10763



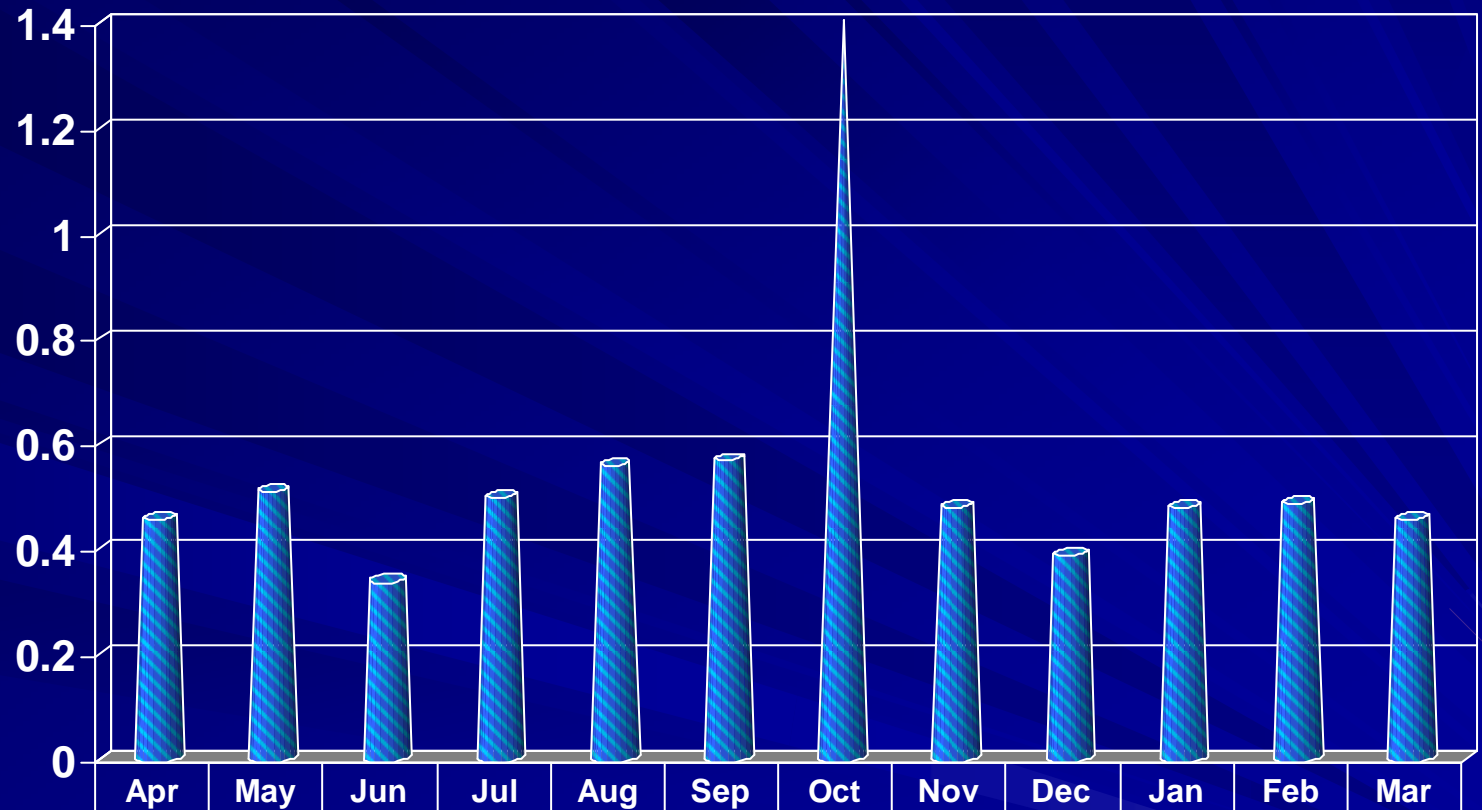
*K*waZulu-Natal Department of Health

PHC Utilization Rate 5 Yrs & Older 2007/2008



*K*waZulu-Natal Department of Health

PHC utilization rate <5 Yrs 2007/2008

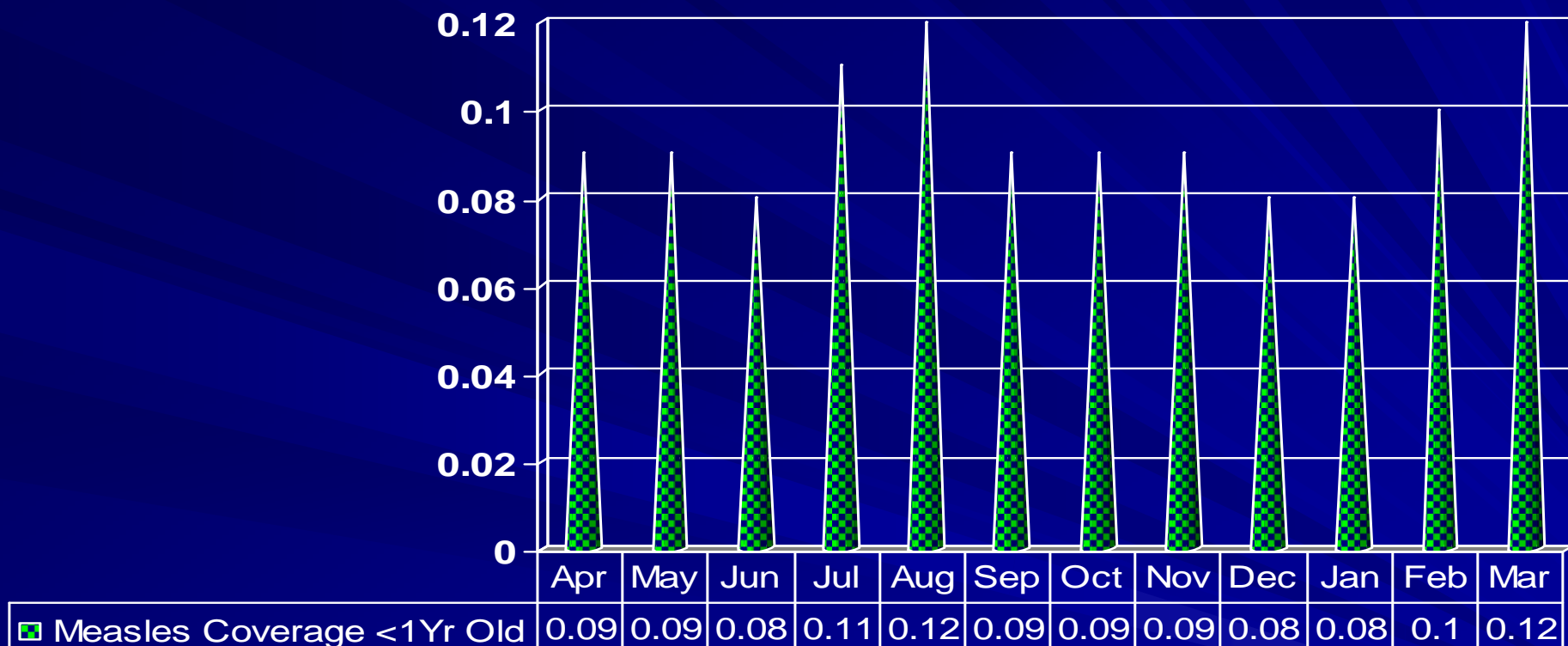


■ PHC Utilisation rate <5 Yrs	0.46	0.51	0.34	0.5	0.56	0.57	1.4	0.48	0.39	0.48	0.49	0.46
-------------------------------	------	------	------	-----	------	------	-----	------	------	------	------	------



*K*waZulu-Natal Department of Health

Measles Coverage <1 Yr 2007/2008



*K*waZulu-Natal Department of Health

Immunization Coverage 2007/2008

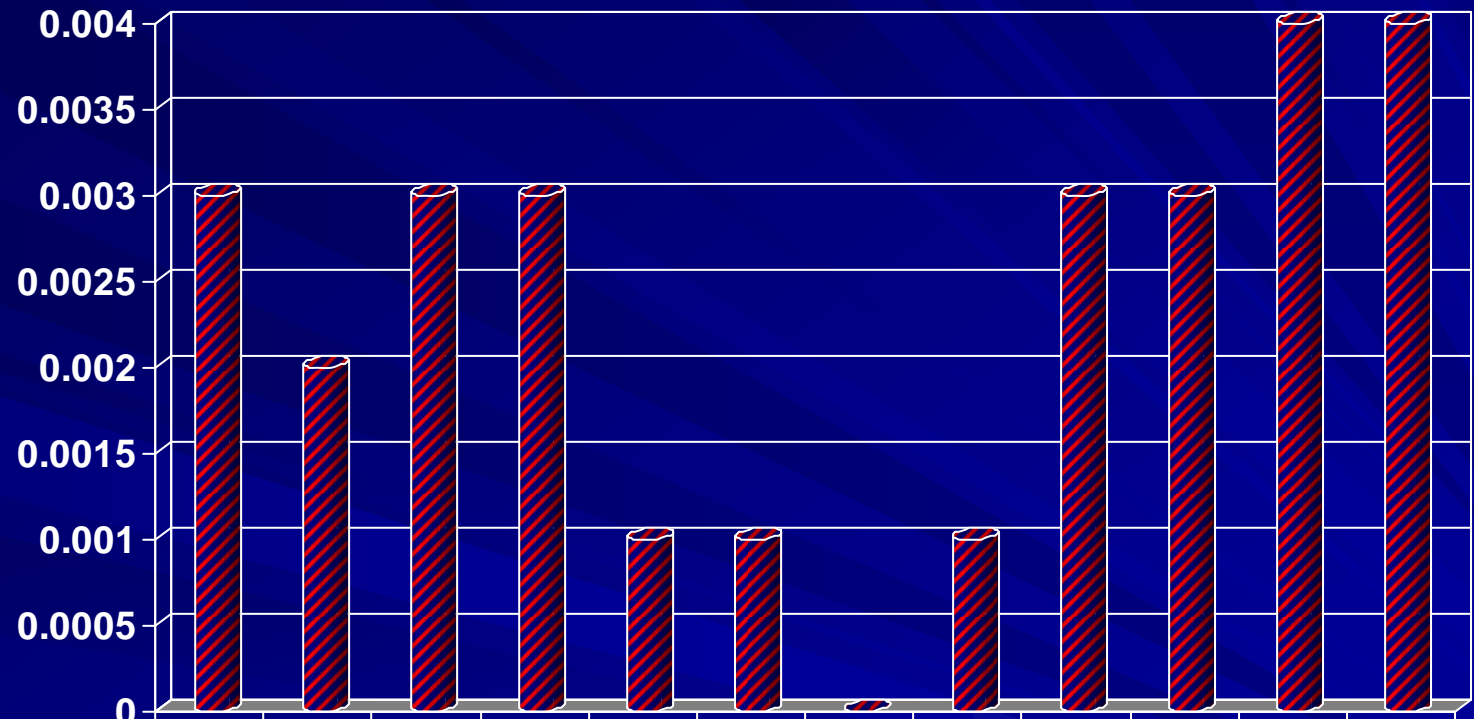


	Apr	May	Jun	Jul	Aug	Sep	Oct	Nov	Dec	Jan	Feb	Mar
Immunization Coverage	0.09	0.08	0.08	0.11	0.13	0.09	0.11	0.09	0.08	0.07	0.09	0.09



*K*waZulu-Natal Department of Health

Underweight For Age Rate <5 Yrs 2007/2008

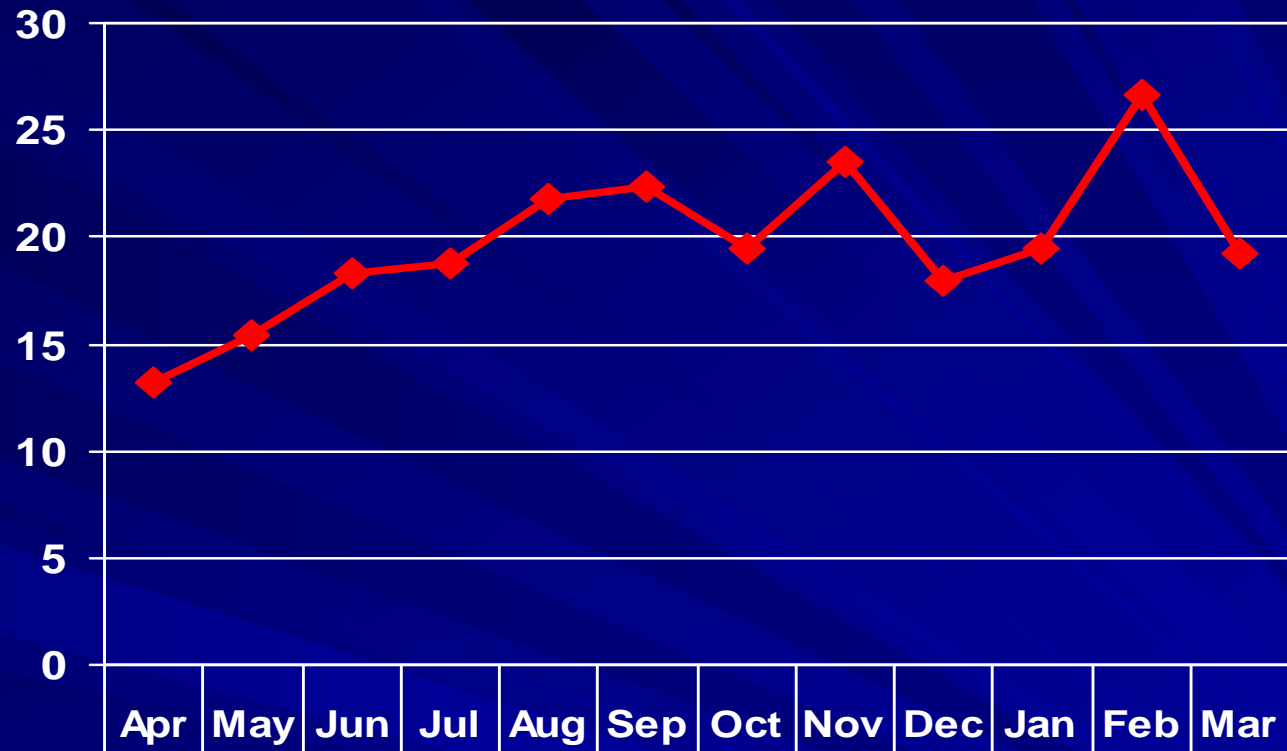


Underweight for age <5yrs	0.003	0.002	0.003	0.003	0.001	0.001	0	0.001	0.003	0.003	0.004	0.004
---------------------------	-------	-------	-------	-------	-------	-------	---	-------	-------	-------	-------	-------



*K*waZulu-Natal Department of Health

Vitamin A Coverage 6-11 Months 2007/2008

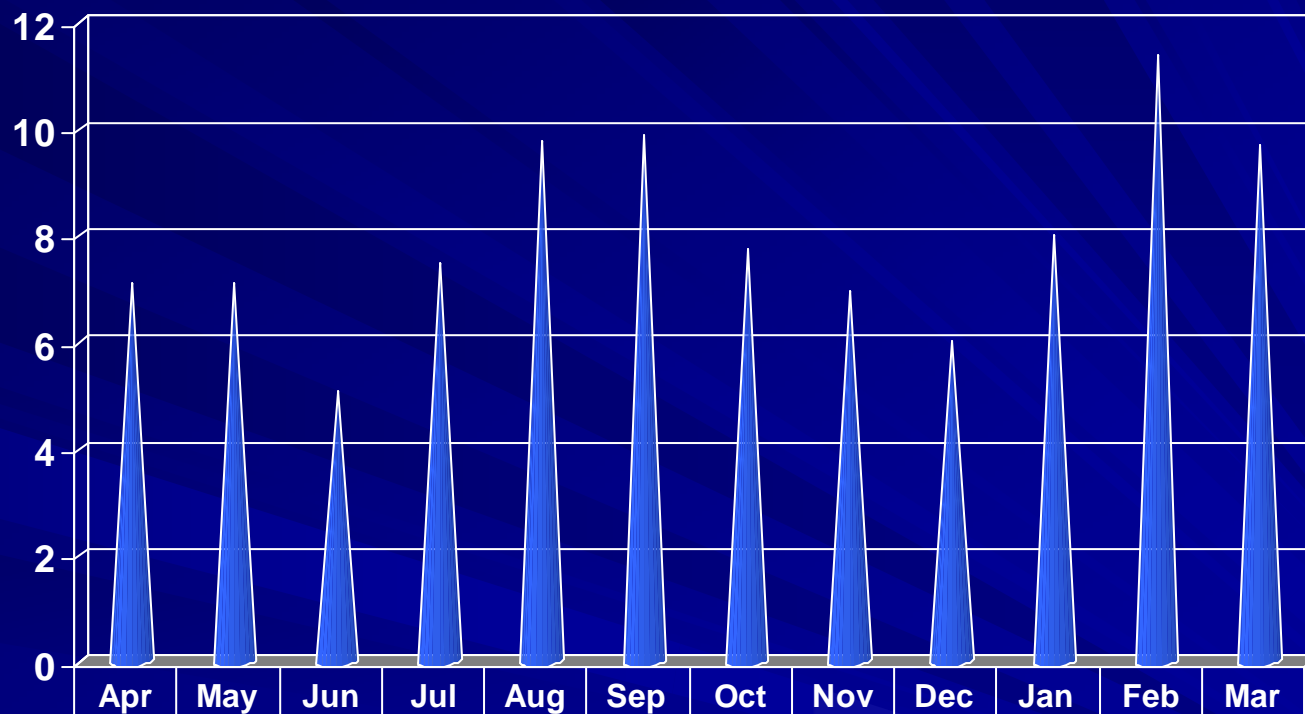


 Vitamin A Coverage 6-11 Months	13.2	15.4	18.3	18.8	21.8	22.3	19.5	23.5	18	19.4	26.7	19.3
---	------	------	------	------	------	------	------	------	----	------	------	------



*K*waZulu-Natal Department of Health

Vitamin A Coverage 12-59 Months 2007/2008

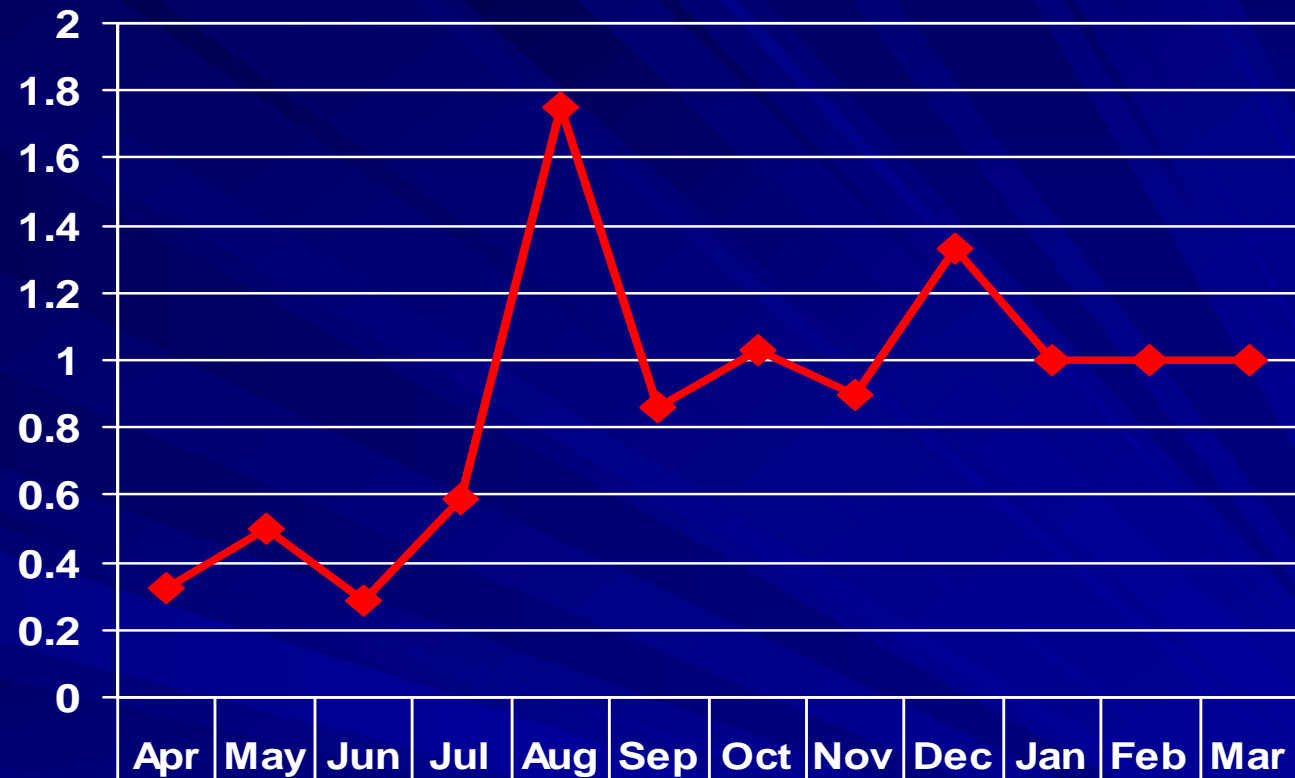


Month	Apr	May	Jun	Jul	Aug	Sep	Oct	Nov	Dec	Jan	Feb	Mar
■ Vitamin A Coverage 12-59 Months	7.07	7.07	5.06	7.45	9.74	9.87	7.71	6.93	6	8	11.36	9.67



*K*waZulu-Natal Department of Health

Cervical Screening Of Women Between 30-59yrs 2007/2008

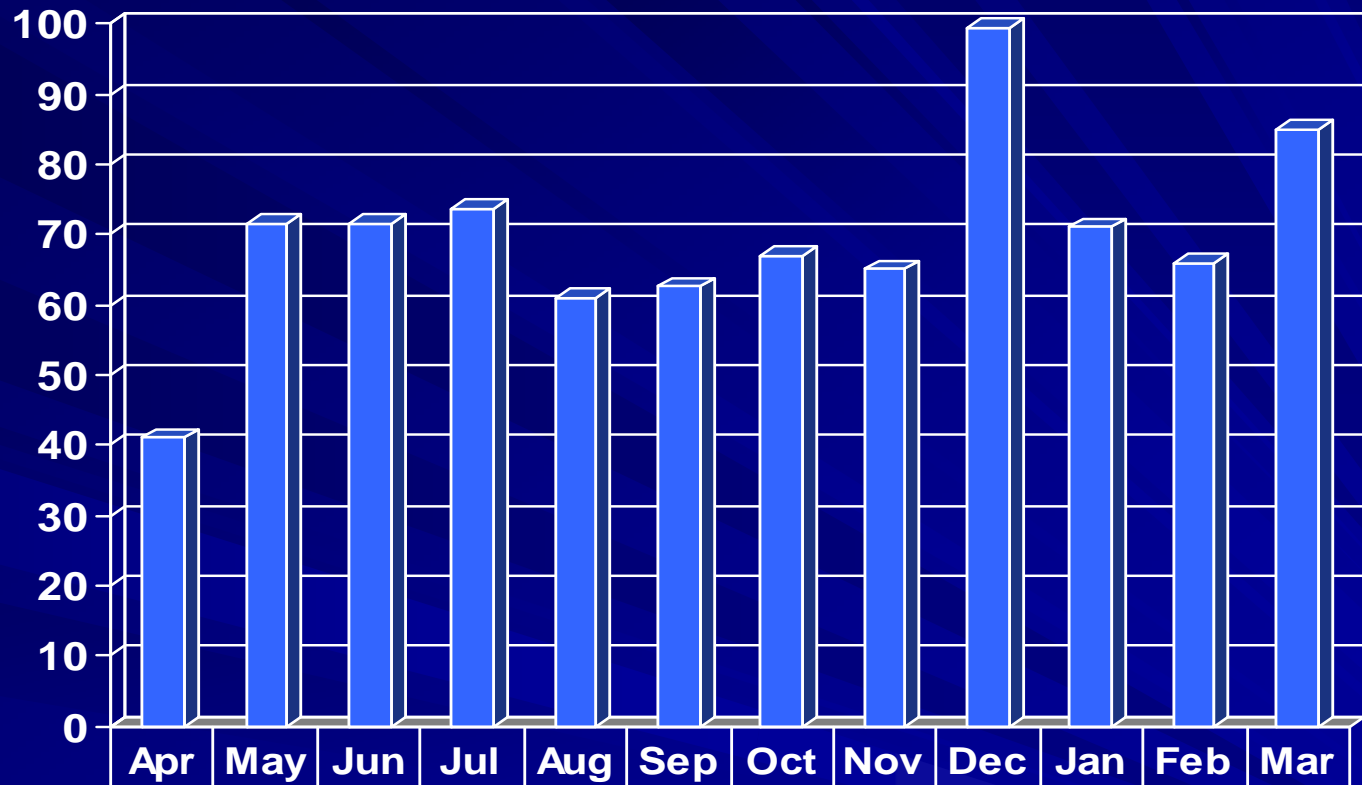


 Cervical Screening of Women Between 30-59yrs	0.32	0.5	0.29	0.59	1.75	0.86	1.03	0.9	1.33	1	1	1
---	------	-----	------	------	------	------	------	-----	------	---	---	---



*K*waZulu-Natal Department of Health

PMTCT Uptake Rate 2007/2008



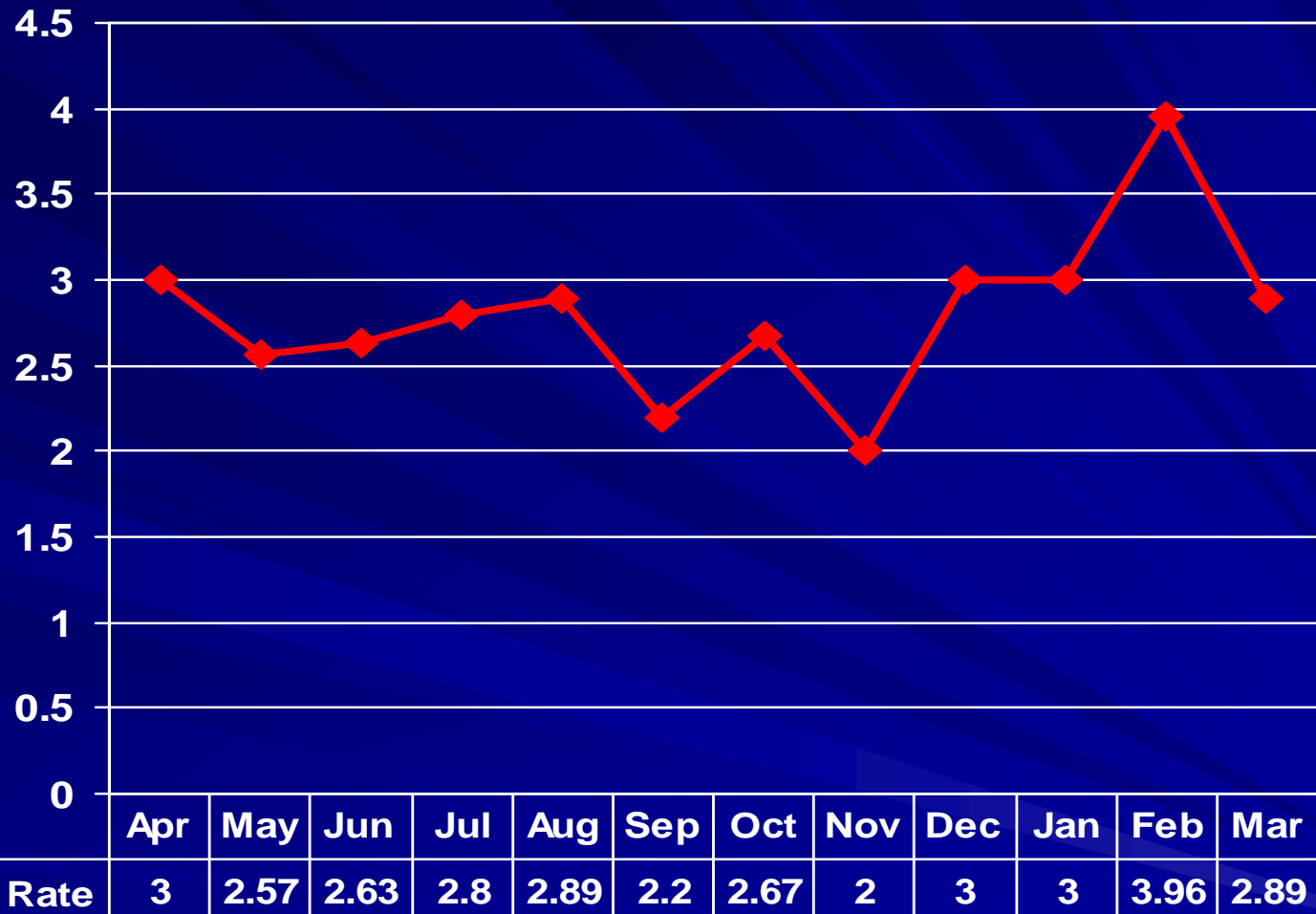
■ PMTCT Uptake Rate	41	71.4	71.4	73.8	61.1	62.5	67.1	65	99.4	71	66	85
---------------------	----	------	------	------	------	------	------	----	------	----	----	----



HEALTH
KwaZulu-Natal

*K*waZulu-Natal Department of Health

VCT Uptake Rate 2007/2008



*K*waZulu-Natal Department of Health

VRYHEID HOSPITAL BUDGET AND EXPENDITURE OVERVIEW 2007/2008

OBJECTIVE	BUDGET ALLOC 07/08	EXP. AS AT MAR 08	% EXP AS AT MAR 08	VARIANCE	% OVER EXPENITURE
DISTRICT HOSPITAL	66,083,000	77,227,328	117%	-11,144,328	17%
TB HOPSITALS	5,060,000	6,795,350	134%	-1,735,350	34%
GENERAL HOSPITAL	4,654,000	4,914,452	106%	260,452	6%
DISTRICT HOSPITALS MAINTENANCE *	2,343,000	2,026,226	86%	316,774	-14%
OTHER COMMUNITY SERVICES	2,318,000	1,908,255	82%	409,745	-18%
NUTRITION	356,000	77,346	22%	278,654	-78%
COMM HEALTH WORKERS	241,000	180,751	75%	60,249	-25%
TRAIN SKILLS DEVELOPMENT	227,00	45,275	20	181,725	-80%
HIV & AIDS: ARV THERAPY (CG/CUR)	3,983,000	6,203,322	156%	-2,220,322	56%
HIV & AIDS :ARV THERAPY (CUR)	131,000	36,376	28%	94,624	-72%
HIV & AIDS: VCT	1,067,000	963,216	90%	103,784	10%
HIV & AIDS: PMTCT	1,516,000	2,256,969	149%	-740,969	49%
HIV & AIDS: OPEP	2,093,000	3,501,491	167%	-1,408,491	67%
TOTALS	90,072,000	106,136,357	118%	-16,064,357	18%



KwaZulu-Natal Department of Health

Vryheid Hospital expenditure and budget estimate 2007-2008 per econ classification.

ECON CLASSIFICATION	ALLOC BUDGET 07/08	EXPEND AS MAR 08	% EXPEND AS MAR 08	VARIANCE	%OVEREXPEND AS MAR 08
COMP.OF EMPL	61,521,000	69,237,950	113%	-7,716,950	13.00%
GOODS & SERVICES	26,461,000	34,191,328	129%	-7,730,328	29%
PROVINCES & MUNICIPALITIES		5,375	0	-5,375	100%
HOUSEHOLD	331,000	235,469	71%	95,531	0
MACH & EQUIP	1,759,000	2,466,236	140%	-707,236	40%
TOTALS	90,072,000	106,136,357	118%	-16,064,357	18%



*K*waZulu-Natal Department of Health

Expenditure per Month Analysis for Major Cost Drivers (Hospital)

ITEM	APR	MAY	JUN	JUL	AUG	SEP	OCT	NOV	DEC	JAN	FEB	MAR	TOTALS
	RANDS	RANDS	RANDS	RANDS	RANDS	RANDS	RANDS	RANDS	RANDS	RANDS	RANDS	RANDS	RANDS
WATER & ELECTRICITY	116,409,91	130,131,51	267,716,74	137,035,42	166,495,71	163,557,86	278,860,38	133,889,54	181,812,45	245,503,60	129,676,43	128,189,88	2,085,279,43
TELEPHONE	19,868,21	30,357,77	48,905,34	48,827,65	80,497,89	45,691,37	60,516,40	84,648,97	53,728,68	33,947,78	71,709,05	55,829,06	634,528,17
BLOOD	226,109,53	177,636,14	31,150,92	24,089,44	134,449,70	118,687,15	76,135,02	149,209,62	91,712,58	114,353,34	102,671,71	30,427,12	1,276,632,27
CATERING	211,818,69	314,261,17	325,739,08	223,871,95	318,525,15	278,843,21	304,666,64	236,964,46	180,282,44	383,334,88	336,441,60	356,522,70	3,471,271,97
WASTE REMOVAL	93,527,79	95,568,39	94,548,09	88,986,26	96,839,10	93,893,93	106,109,45	205,763,47	101,690,97	109,959,66	118,975,47	106,601,24	1,312,463,82
SECURITY	83,004,16	55,447,24	69,225,70	57,063,08	66,185,05	66,185,05	41,502,08	62,658,91	69,225,70	41,502,08	41,502,08	41,502,08	501,271,26
OXYGEN	61,070,17	54,415,91	227,513,51	48,605,30	61,415,64	60,604,11	41,577,80	42,349,89	378,554,98	47,162,31	48,605,30	45,577,80	1,117,452,72
TOTALS	811,808,46	857,818,13	1,064,799,38	628,479,10	924,408,24	827,462,67	909,367,77	915,484,86	1,057,007,80	984,763,65	849,581,64	761,649,88	10,398,899,63



*K*waZulu-Natal Department of Health

PHC Facilities – Expenditure per Month Analysis for Major Cost Drivers

ITEM	APR	MAY	JUN	JUL	AUG	SEP	OCT	NOV	DEC	JAN	FEB	MAR	TOTALS
	RANDS	RANDS	RANDS	RANDS	RANDS	RANDS	RANDS	RANDS	RANDS	RANDS	RANDS	RANDS	RANDS
WATER & ELECTRICITY	3,457,27	19,082,55	6,010,37	9,755,03	17,872,08	11,235,46	38,642,59	16,546,77	7,751,46	32,443,43	8,965,00	18,146,24	189,361,28
TELEPHONE	90,150,60	101,268,00	89,824,26	80,931,57	65,113,84	85,457,65	25,642,12	76,912,58	29,920,90	29,149,98	36,847,83	30,717,12	741,936,25
WASTE REMOVAL	17,416,41	10,891,26	14,153,80	14,153,82	14,153,82	14,153,82	14,968,89	26,732,04	17,949,02	16,063,65	5,138,03	11,937,29	177,711,86
SECURITY	142,539,56	86,108,78	100,192,46	66,260,78	42,347,33	87,489,78	145,028,23	135,605,99	92,477,22	101,112,04	33,706,00	116,014,29	11,148,882,46
TOTAL	253,563,84	217,350,59	210,180,89	171,101,20	139,487,07	198,336,72	223,734,83	255,797,38	148,098,60	178,769,10	84,656,66	176,814,94	2,257,891,82



*K*waZulu-Natal Department of Health

VRYHEID PHC BUDGET AND EXPENDITURE OVERVIEW 2007/2008

OBJECTIVE	BUDGET ALLOC 07/08	EXP AS AT MAR 08	% EXP AS AT MAR 08	VARIANCE	% OVEREXPENDITURE
BHEKUMTHETHO CLINIC	2,307,000	2,950,504	128%	-643,504	28%
BHEKUZULU CLINIC	2,764,000	3,990,795	144%	-1,226,795	44%
GLUCKSTADT CLINIC	1,477,000	1,286,494	87%	190,506	-13%
GATEWAY CLINIC	557,000	475,356	85%	81,644	-15%
HLOBANE CLINIC	2,411,000	3,220,531	134%	-809,531	34%
KHAMBI CLINIC	1,479,000	1,617,619	109	-138,619	9%
LOUWSBURG CLINIC	2,052,000	2,218,976	108%	-166,976	8%
MAKHWELA CLINIC	1,166,000	1,435,414	123%	-269,414	23%
MASON CLINIC	3,031,000	3,474,244	115%	-443,244	15%
MONDLO CLINIC	3,880,000	5,080,674	131%	-1,200,674	31%
NTABABUMVU CLINIC	2,348,000	2,692,774	115%	-344,774	15%
SIYAKHATHALA CLINIC	1,901,000	2,001,585	105%	-100,585	5%
THEMBUMUSA CLINIC	4,804,000	5,451,9000	113%	-647,900	13%
MOBILE CLINICS VHD	7,275,000	9,419,192	129%	-2,144,192	29%
SWARTMFOLOZI	1,290,000	1,456,650	113%	-166,650	13%
TOTALS	38,742,000	46,772,708	121%	-8,030,708	21%



KwaZulu-Natal Department of Health

Compilers

- Information collected and compiled by Information Unit, *Rudolph Z Mbatha (FIO)* & *Sandile BP Buthelezi (Data Capturer)*

Office No:13

Tel No: 034 982 2111 ext 271

Fax No: 034 980 9757

E-mail Address: rudolph.mbatha@kznhealth.gov.zaa & bongani.buthelezi@kznhealth.gov.za



*K*waZulu-Natal Department of Health