

HLABISA HOSPITAL QUARTERLY REPORT OCT - DEC 2009



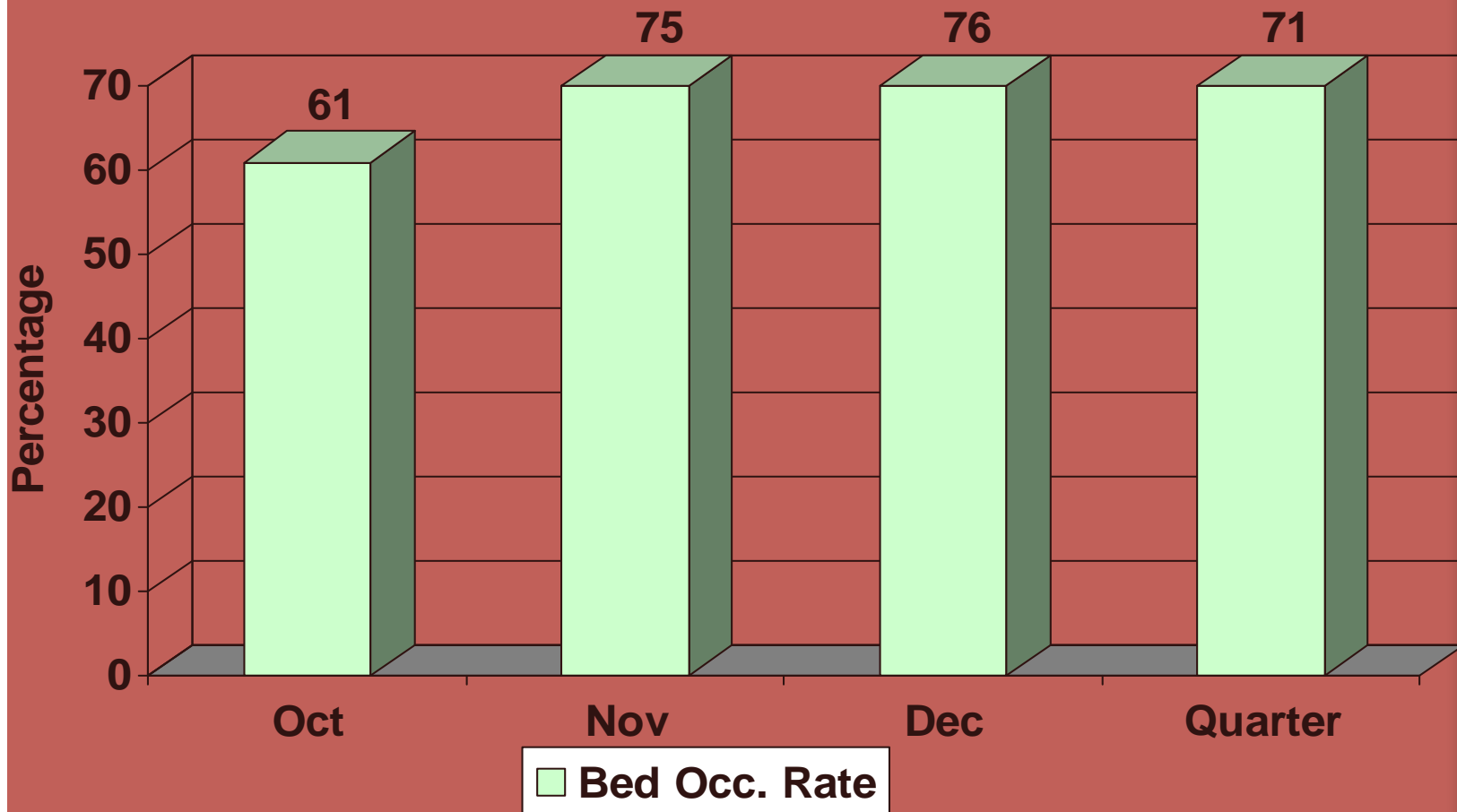
INFORMATION SERVICES DEPARTMENT

*Compiled By: Ms C.N Mathabela (FIO)
Ms N.F Qwabe (Intern FIO)*



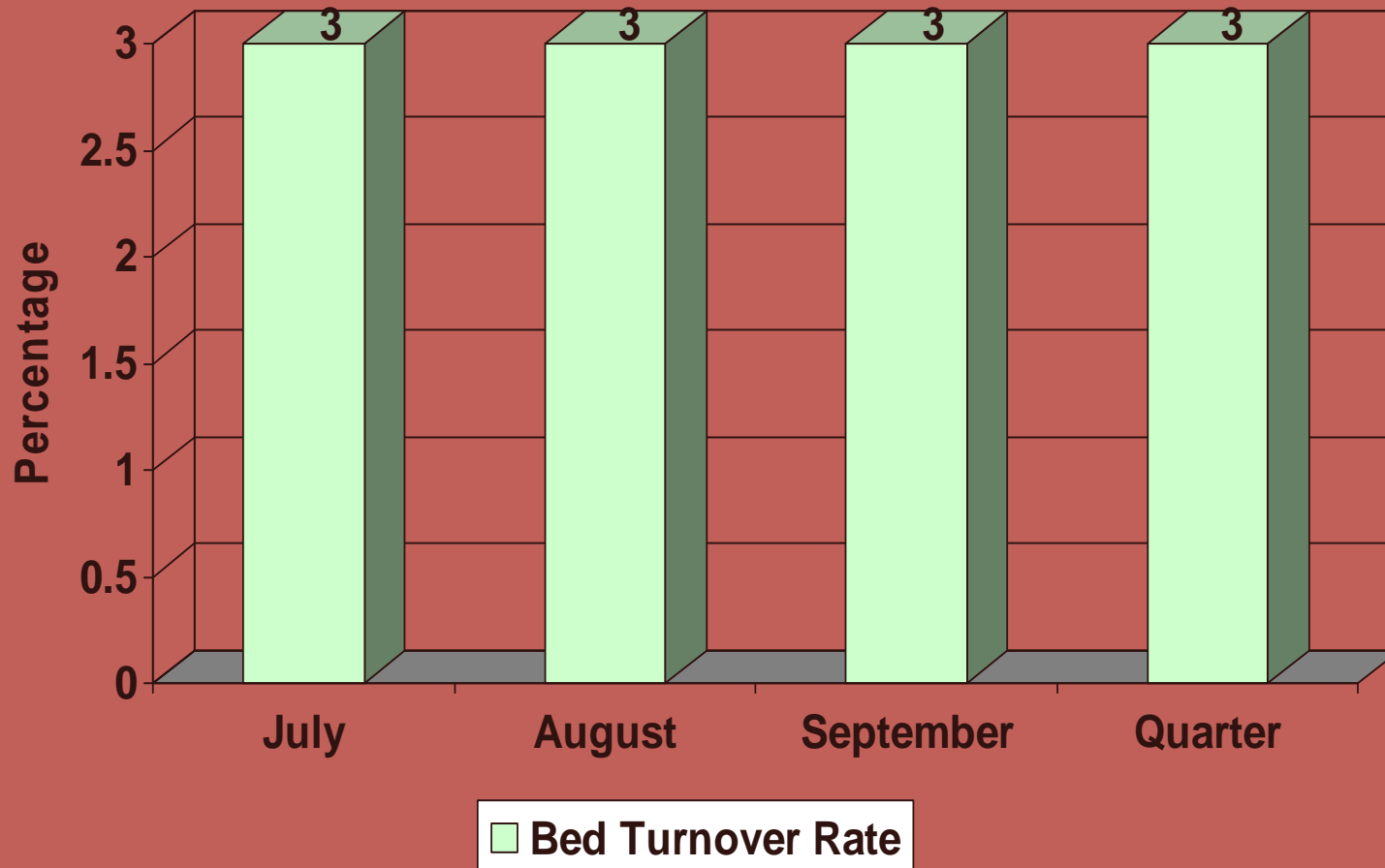
BED OCCUPANCY RATE

OCT - DEC 09

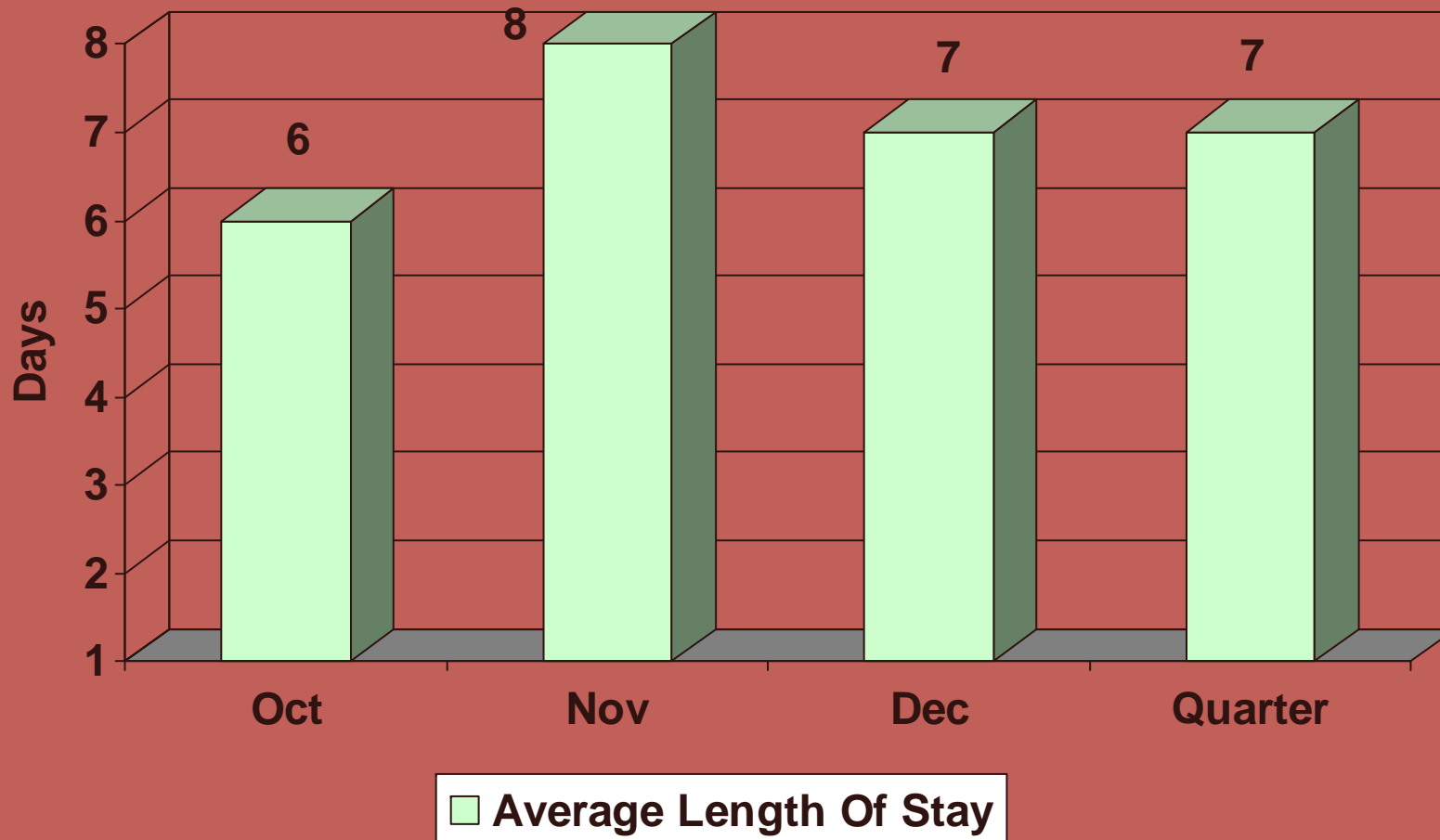


BED TURNOVER RATE

Oct - Dec 09

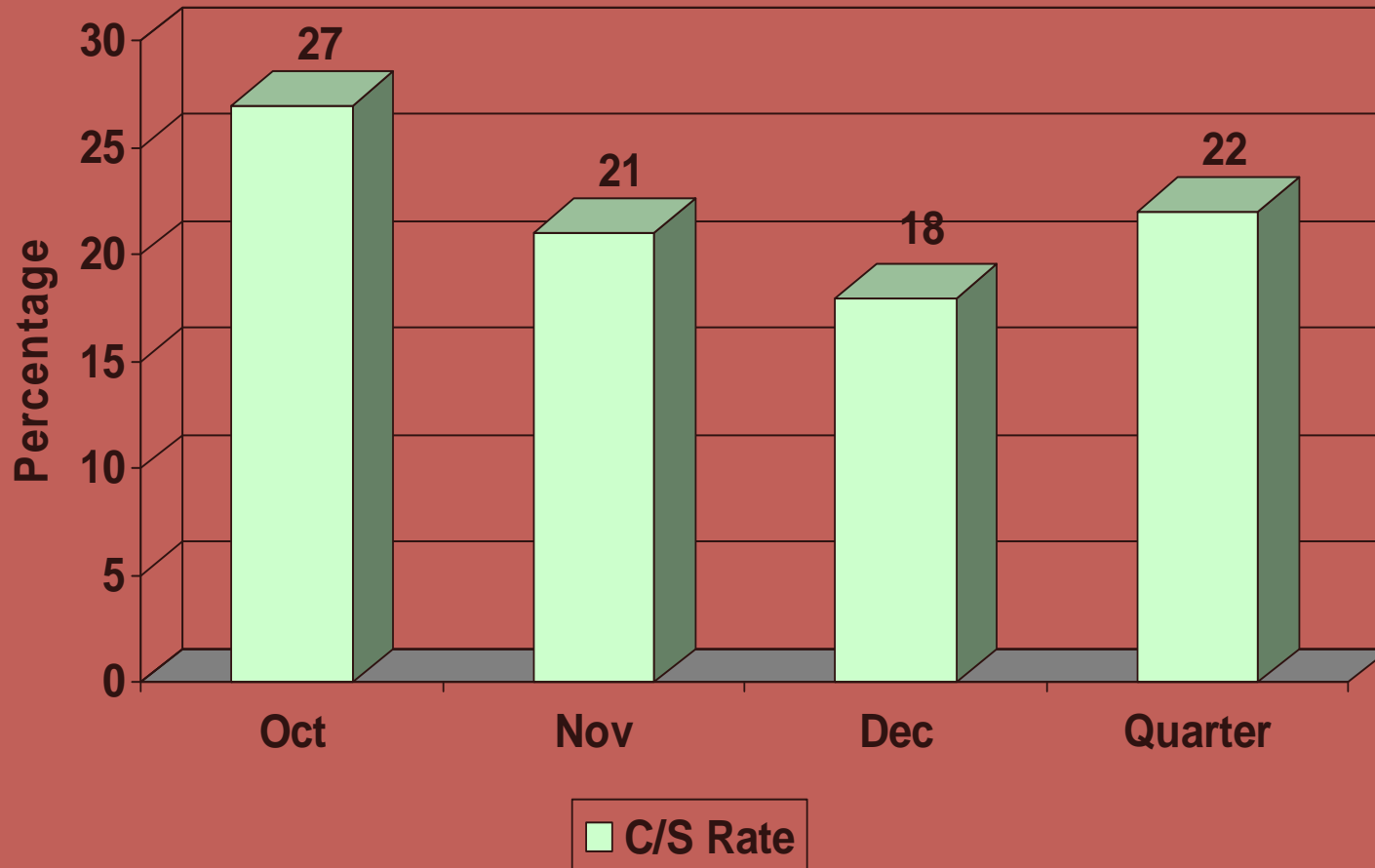


Average Length Of Stay Oct - Dec 09



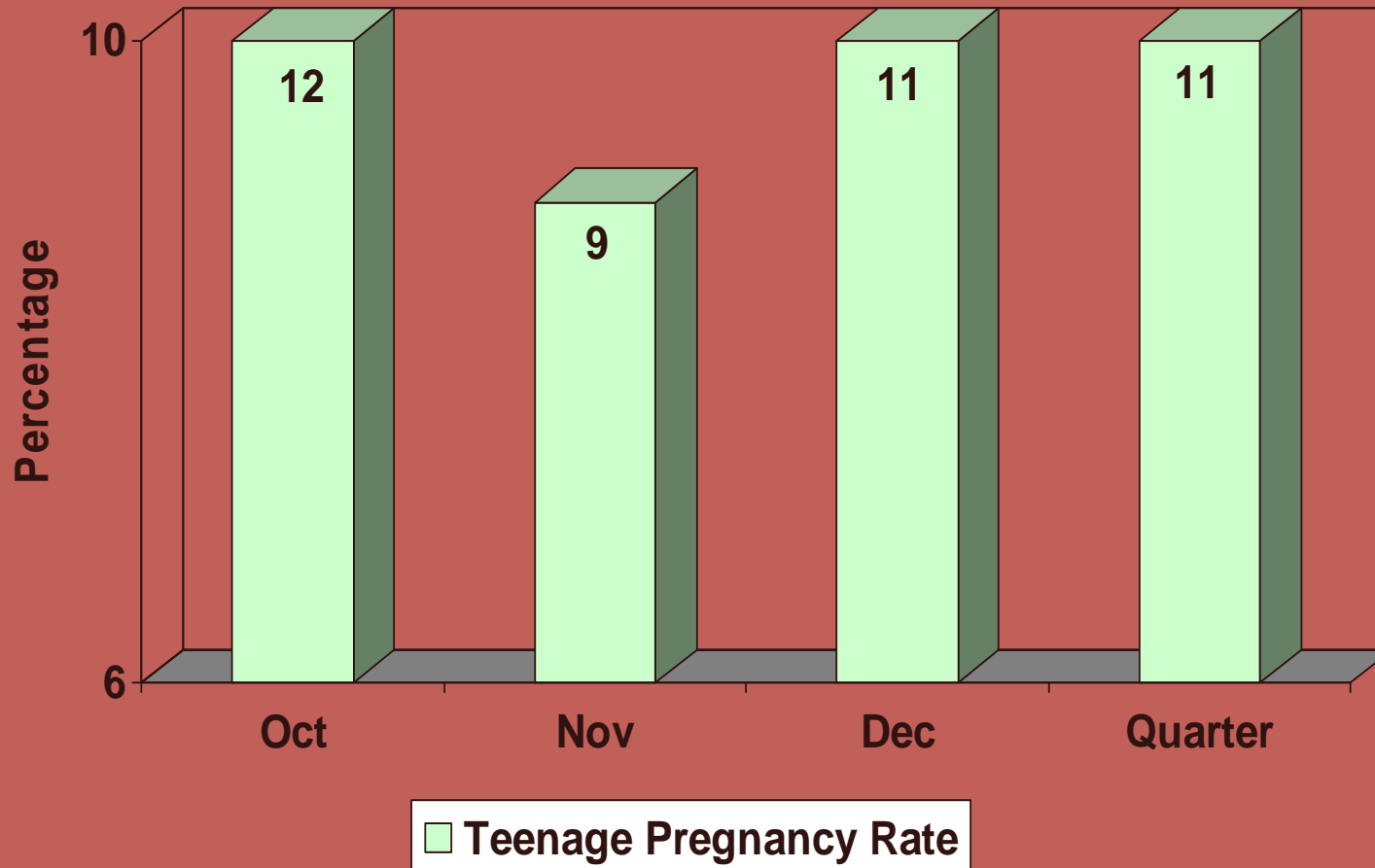
CEASAREAN SECTION RATE

Oct - Dec 09



TEENAGE PREGNANCY RATE

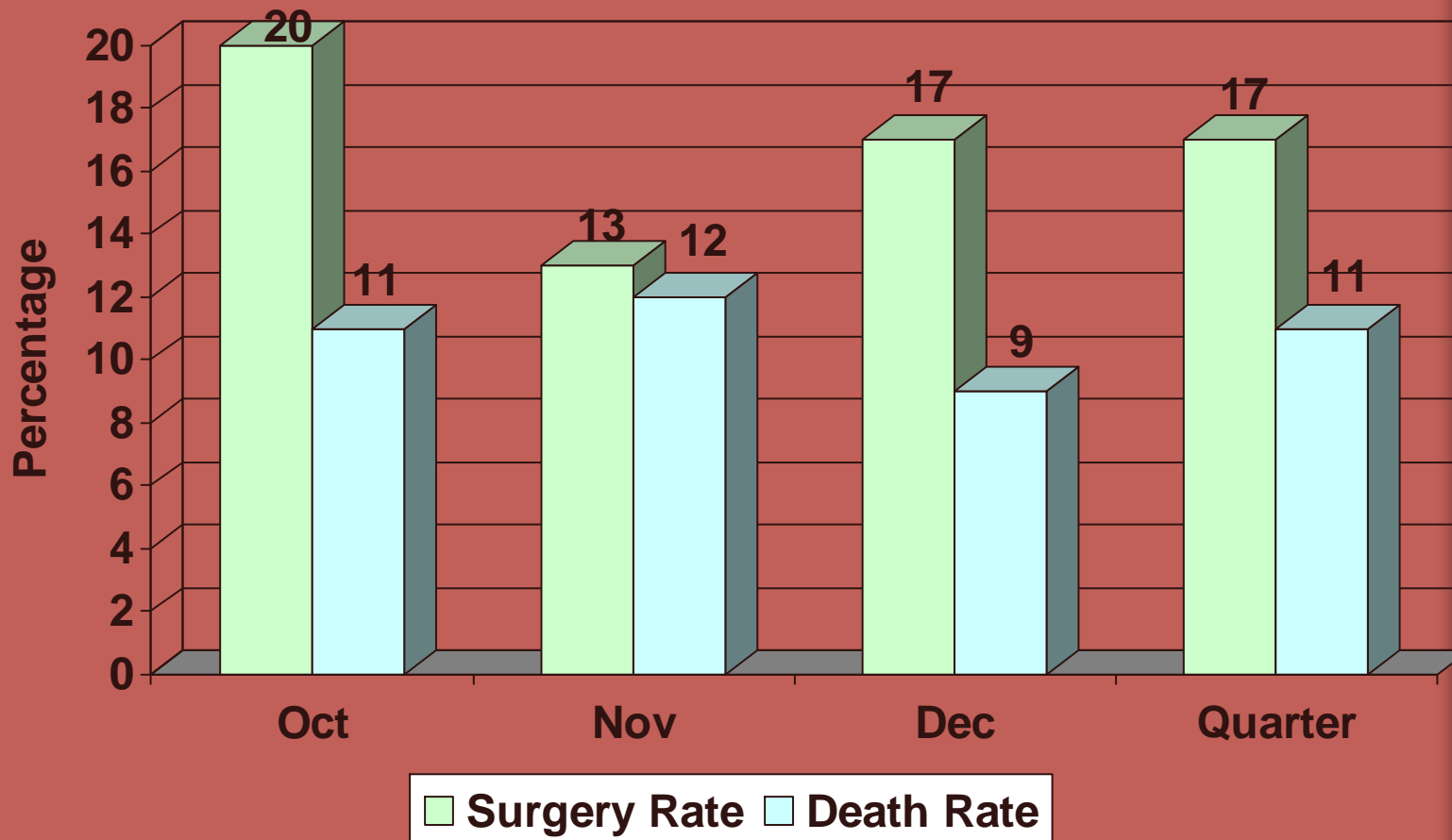
Oct - Nov 09



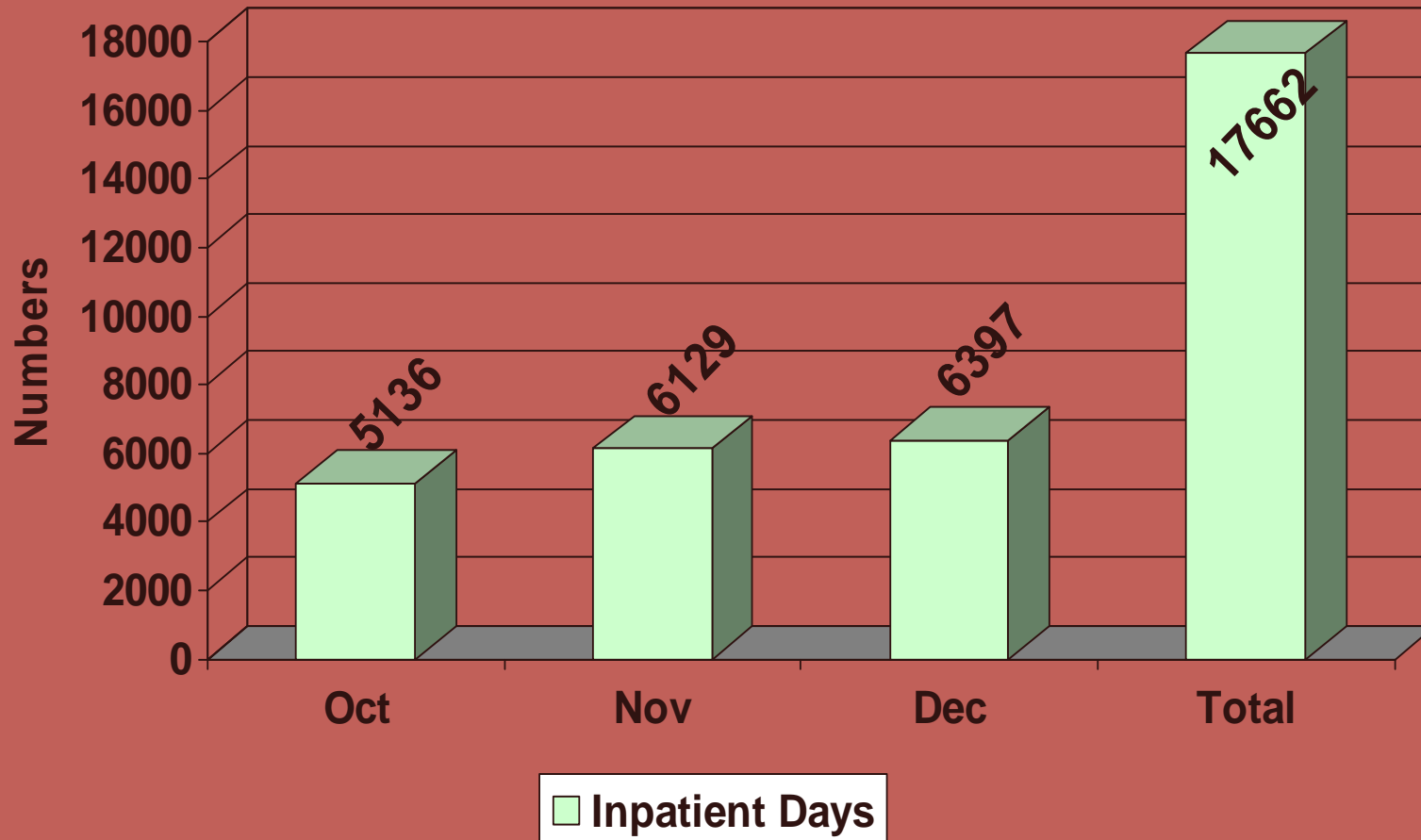
SURGERY RATE

DEATH RATE

Oct - Dec 09

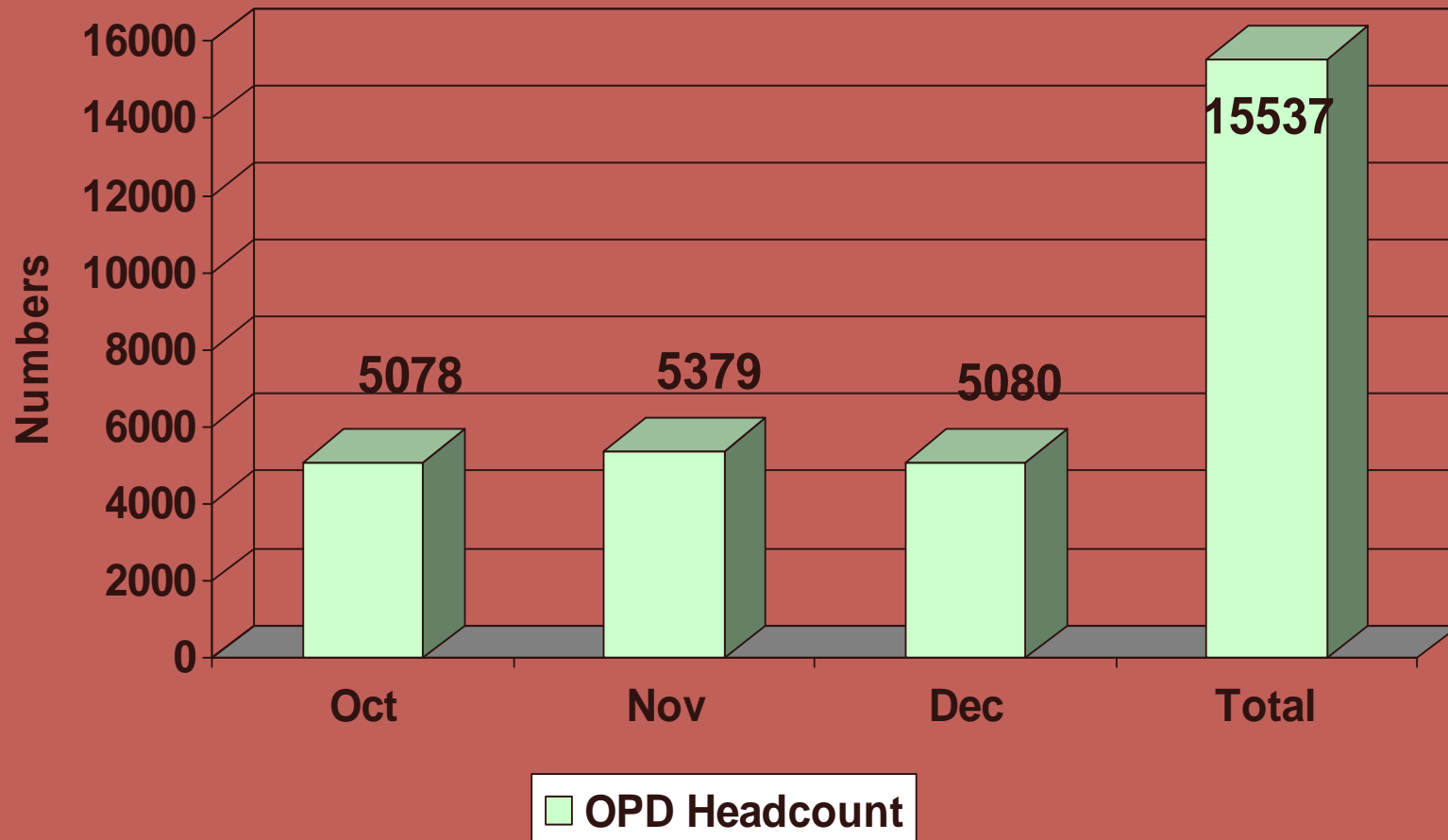


INPATIENT DAYS OCT - DEC 09

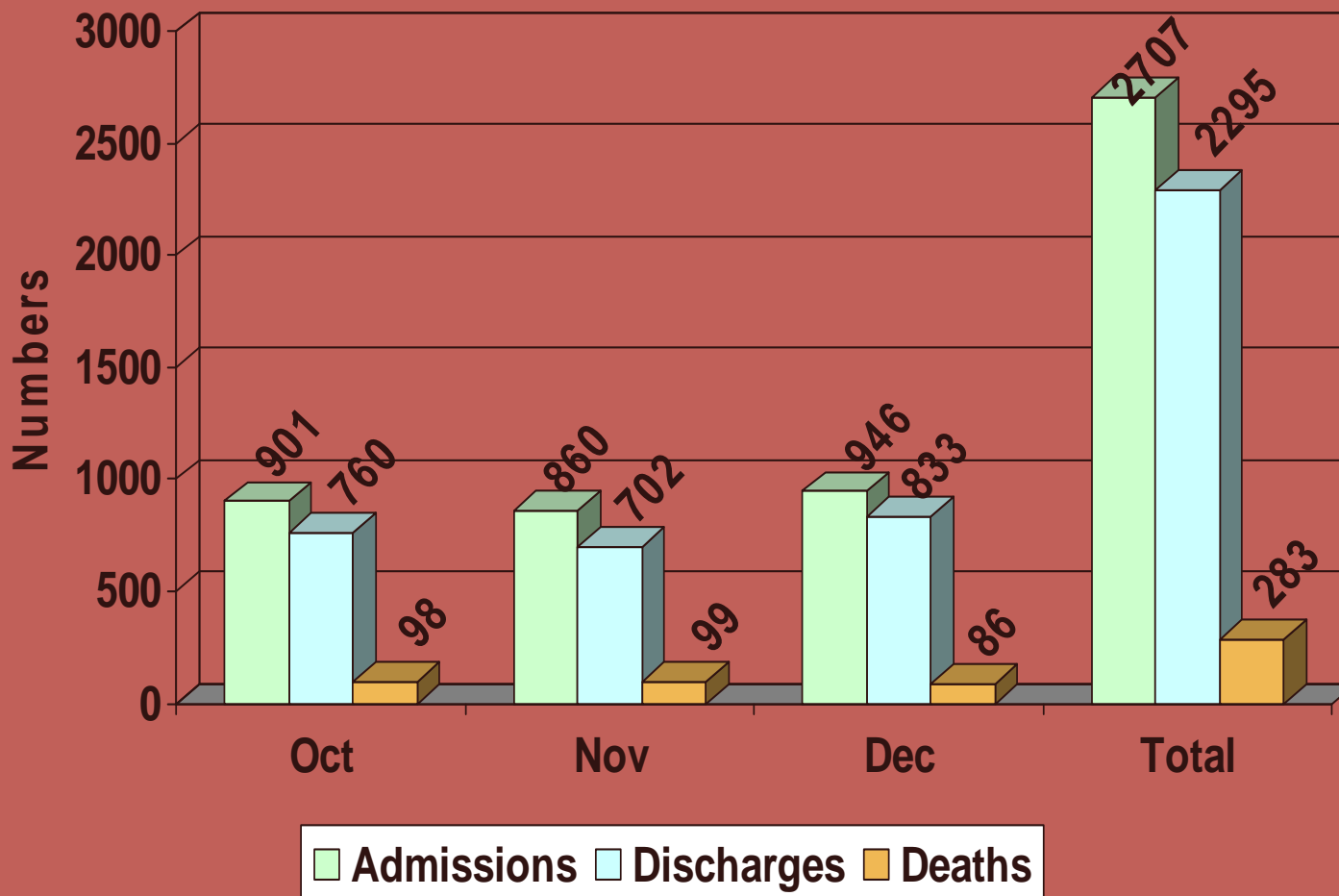


OPD HEADCOUNT

OCT - DEC 09



ADMISSIONS, DISCHARGES DEATHS OCT - DEC 09



Maternal Statistics

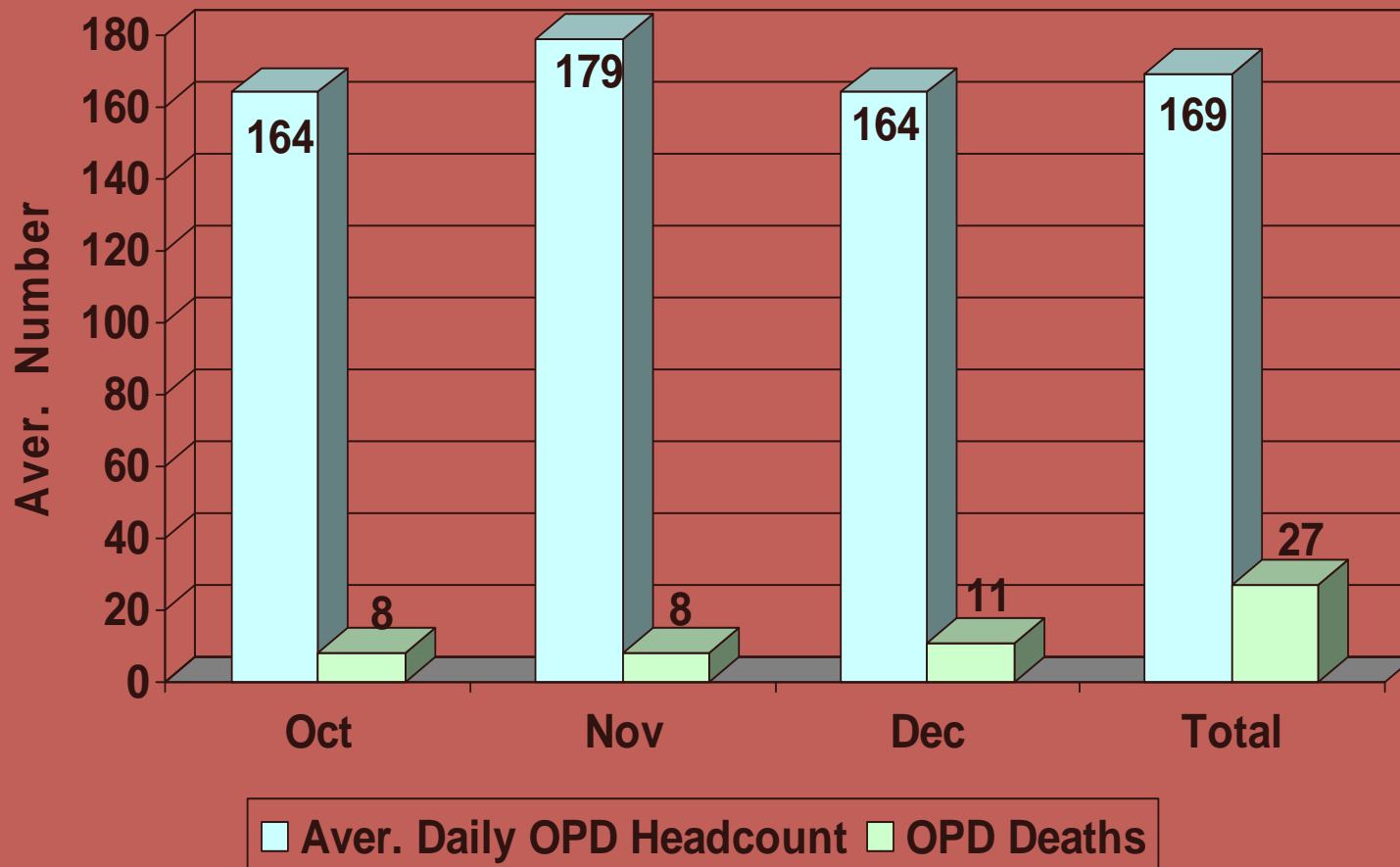
Oct - Dec 09

MATERNAL STATISTICS	Oct	Nov	Dec	Quarter
Total Births	291	264	307	862
Total Deliveries	283	254	302	839
Total Caesarean Section	76	53	55	184
Still Births	8	10	5	23
Teenage Deliveries	33	24	35	92
Maternal Deaths	0	0	1	1
BBA`s	17	9	14	40



Aver. Daily OPD Headcount

OPD Deaths : Oct - Dec 09



DEPARTMENTAL SERVICES AUG - SEPT 09

<i>SECTION</i>	<i>OCT</i>	<i>NOV</i>	<i>DEC</i>	<i>TOTAL</i>
<i>X – RAY</i>	1229	907	953	3089
<i>ULTRASOUND</i>	146	155	213	514
<i>THEATRE CASES</i>	179	112	160	451
<i>MAINTANANCE REQUESTS DONE</i>	43	61	72	176
<i>EYE CLINIC</i>	529	757	470	1756
<i>DENTAL CLINIC</i>	255	238	193	686
<i>REHABILITATION</i>	618	558	260	1436
<i>SOCIAL WORK</i>	271	326	224	821



TB CLINIC / PHAMARCY

Oct - Dec 2009

TB CLINIC	Oct	Nov	Dec	Quarter
TB Headcount	120	165	121	526
TB suspects	92	92	83	267
TB suspects positive	13	12	6	31
Notification – start treatment	25	28	28	81
MDR cases	4	4	14	22
TB Admission	21	14	20	55
TB Deaths	22	28	28	78

PHAMARCY	Oct	Nov	Dec	Quarter
No. of Items	18539	18561	11152	48252
No. of Prescriptions	6296	6309	4003	16608
Chronic pink cards	1998	4197	1732	7927



PHC TOTAL HEADCOUNT

Facility	Oct-09	Nov-09	Dec-09	Grand Total
Esiyembeni Clinic Total	971	1,010	1,006	2,987
Ezwenelisha Clinic Total	2,018	1,591	987	4,596
Gunjaneni Clinic Total	1,736	1,724	1,639	5,099
Hlabisa Gateway Clinic Total	4,132	3,875	3,617	11,624
Hlabisa Mobile 1 Total	1,338	1,475	1,484	4,297
Hlabisa Mobile 2 Total	1,605	1,475	1,473	4,553
Hlabisa Mobile 3 Total	1,737	1,261	1,007	4,005
Hlabisa Mobile 4 Total	1,636	1,743	943	4,322
Inhlwathi Clinic Total	2,566	1,852	1,942	6,360
KwaMsane Clinic Total	11,612	10,617	11,697	33,926
Macabuzela Clinic Total	3,065	3,285	2,345	8,695
Machibini Clinic Total	1,464	1,041	1,052	3,557
Madwaleni Clinic Total	4,933	4,683	3,966	13,582
Makhowe Clinic Total	2,095	2,358	2,260	6,713
Mpembeni Clinic Total	863	975	704	2,542
Mpukunyoni Clinic Total	2,761	2,426	2,201	7,388
Mtubatuba Clinic Total	4,145	4,406	2,361	10,912
Nkundusi Clinic Total	4,175	3,576	3,745	11,496
Ntondweni Clinic Total	1,987	1,609	1,656	5,252
Somkhele Clinic Total	3,353	3,490	2,824	9,667
Khula Village Clinic Total	2289	1,723	1,452	5464

