



HEALTH
KwaZulu-Natal

THULASIZWE HOSPITAL
Private Bag X 206, Ceza 3866
Tel: 035 – 832 0198/ 0003
Fax: 035 – 832 0062/0061
Email: nkosi.zulu@kznhealth.gov.za

Information Bulletin



2009/10

CONTENTS

| Contents | Page |
|--|-------------|
| Table of Content | 2 |
| Vision & Mission | 3 |
| Data Capturer's comment | 4 |
| Data Capturer personnel | 5 |
| Information Flow | 6 |
| Inpatient Data | 7 |
| Admission Graph | 8 |
| Comparison Graphs | 9 |
| ART and Pharmacy Stats | 10 |
| Outreach Department | 11 |
| T.B Assessment | 12 |
| MDR TB Information & DOT Coverage for MDR-TB Patients | 13 |
| XDR & TB vs. HIV report | 14 |
| VCT Statistics & Graph | 15 |
| Transport Statistics | 16 |
| Transport trips traveled per Quarter | 17 |
| Kilometers Traveled Per Quarter | 18 |
| Conclusion | 19 |

Vision

To harvest and provide a holistic overview of data collected data that processes and culminates in an information system that is sought and upon which management decisions are made.

Mission

To create an enabling environment to improve and support the hospital information system for evaluation and serve the needs of Thulasizwe Hospital.



ON CAPTURING OF SIDE

Information Personnel

Mr. N.E ZULU

**** DATA CAPTURER/FIO**



FIO's Comments

The utilization of data as a management tool has been largely useful to the Hospital. Monitoring the trends over the past will assist in Planning at all levels.

Thulasizwe Hospital has therefore see the need of having someone who will take care of data for the hospital. In the past the importance of statistics was under estimated nation wide thus these systems fragmented and overlooked.

Converting information into knowledge identifies the deficiencies and efficiencies and allows for improvement and appraisal thus allowing Thulasizwe Hospital to function more efficiently and offer better service delivery in the future.

INFORMATION DEPARTMENT PERSONNEL

NATHI .E ZULU (DATA CAPTURER/ACTING FIO)



T.P MTHIMKHULU (DATA- VCT) M.P MBATHA (DATA –MDR TB)



N.X NDLOVU (DATA CAPTURER TB)



INFORMATION FLOW

WARD/DEPARTMENT



O/M IN CHARGE



DATA CAPTURER



FACILITY INFORMATION OFFICER



INFORMATION MANAGEMENT TEAM



DISTRICT OFFICE

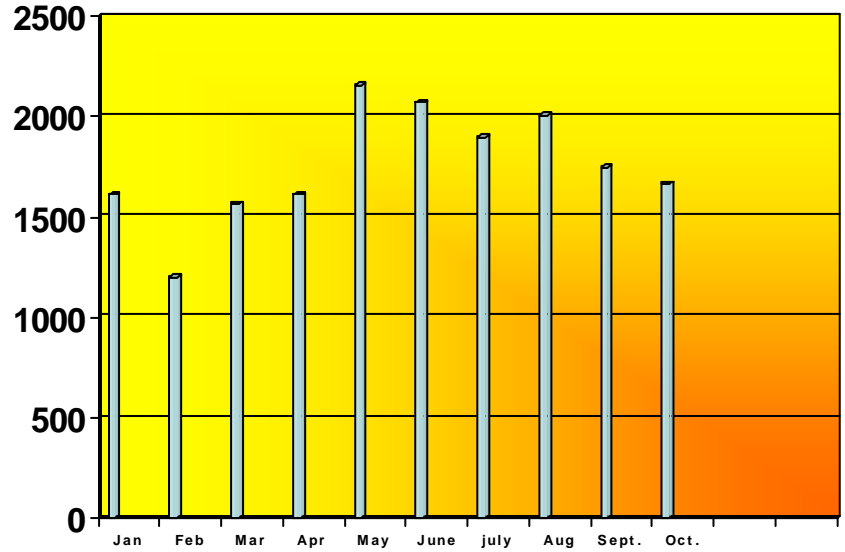


HEAD OFFICE

INPATIENT DATA:

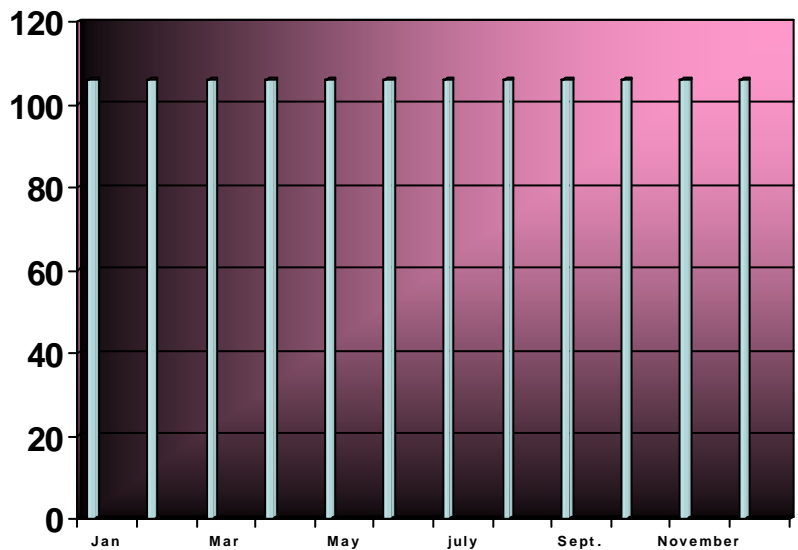
| Month | Inpatient Days |
|-----------|----------------|
| January | 1611 |
| February | 1202 |
| March | 1566 |
| April | 1611 |
| May | 2158 |
| June | 2070 |
| July | 1899 |
| August | 2006 |
| September | 1750 |
| October | 1665 |

Inpatient Days



Usable Beds

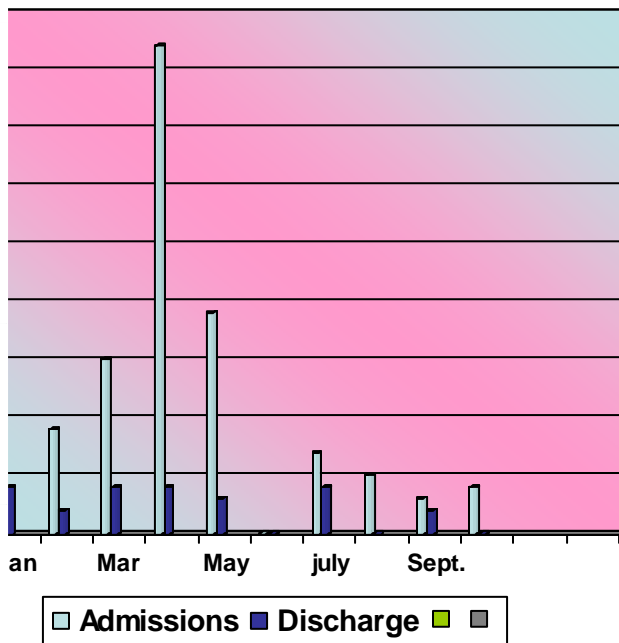
| | Usable Beds |
|-----------|-------------|
| January | 106 |
| February | 106 |
| March | 106 |
| April | 106 |
| May | 106 |
| June | 106 |
| July | 106 |
| August | 106 |
| September | 106 |
| October | 106 |
| November | 106 |
| December | 106 |



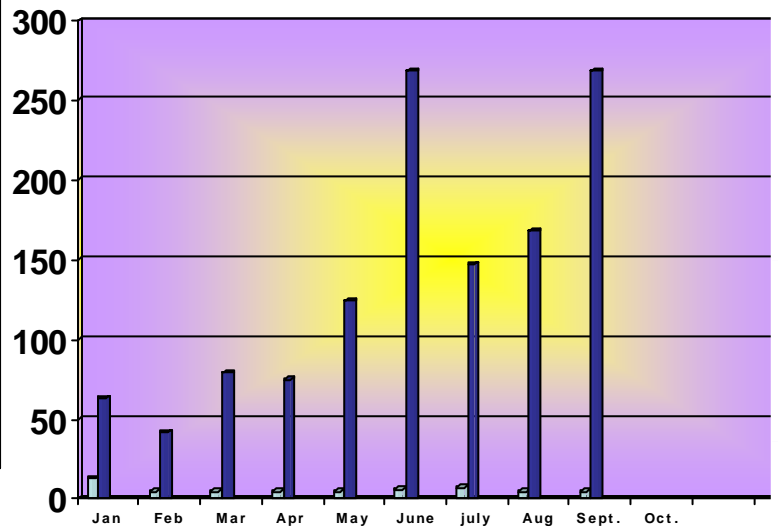
| ELEMENT | JAN | FEB | MAR | APR | MAY | JUNE | JULY | AUG. | SEPT. | OCT. |
|--------------------|-----|-----|-----|-----|-----|------|------|------|-------|------|
| ADMISSIONS | 42 | 9 | 15 | 42 | 19 | 0 | 7 | 5 | 3 | 21 |
| DISCHARGE | 4 | 2 | 4 | 4 | 3 | 0 | 4 | 0 | 2 | 1 |
| LENGTH OF STAY | 268 | 51 | 215 | 4 | 522 | 52 | | 187 | 268 | 139 |
| BED OCCUPANCY RATE | 13 | 5 | 5 | 5 | 5 | 5 | 7 | 5% | 5 | 8% |
| DEATH | 5 | 2 | 2 | 6 | 4 | 3 | 3 | 0 | 3 | 0 |

Graph showing the number of admissions, discharges, Bed Occupancy rate and deaths for the year 2008.

Admission Vs Discharge Graph



Bed Occupancy Rate vs Average length of stay



The Data capturer provides the following information/ Data
 VCT/HIV Data

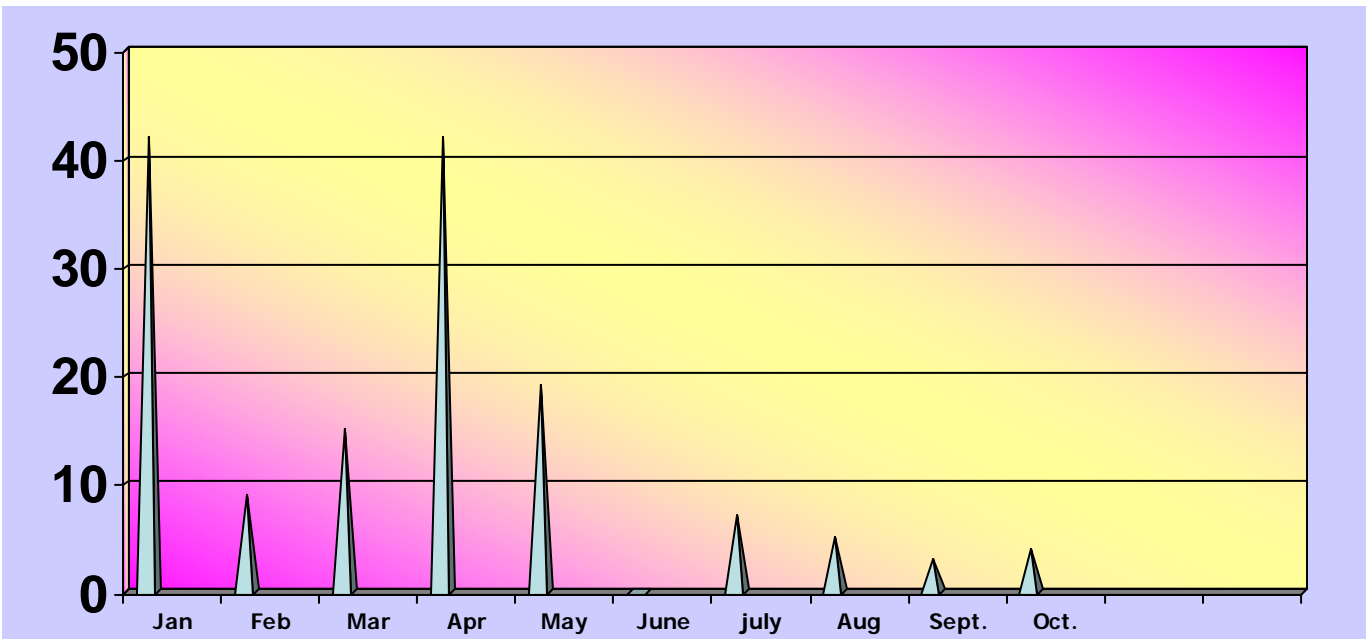
- ✚ TB performance indicators.
- ✚ Pharmacy Statistics
- ✚ In-Patient information
- Admission
- Deaths
- Discharges
- Transfers
- Bed Status

Provision of summary and comparative reports on data pertaining to Thulasizwe Hospital.

Graph showing the difference in the number of patients admitted for the first, Second Quarter of 2009-10

| Number Admission Patients on Outreach Department year 2009-10 | | | | | | | | | | |
|---|-----|-----|-----|-------|-----|------|------|------|-----|-----|
| | Jan | Feb | Mar | April | May | June | July | Aug. | Sep | Oct |
| Admission | 42 | 9 | 15 | 42 | 19 | 0 | 7 | 5 | 3 | 4 |

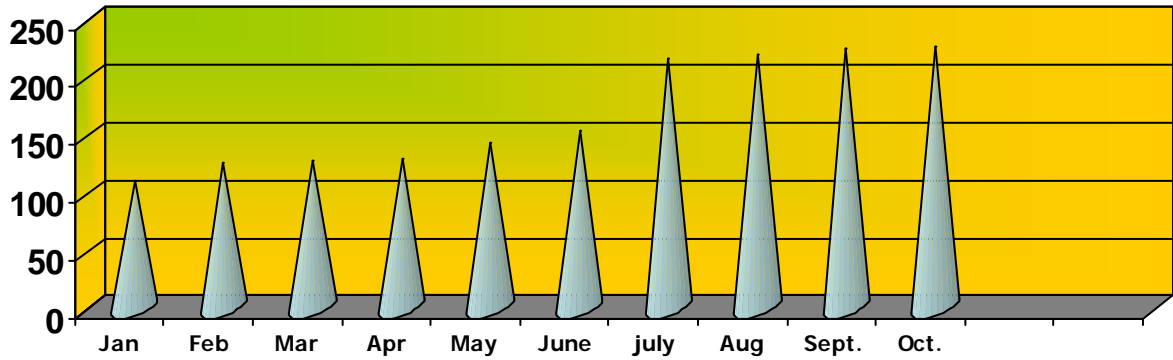
Admissions Graph 2009-10



NUMBER OF PATIENTS ON ART FOR THE YEAR 2009-10

| Number of Patients on ART for the year 2009-10 | | | | | | | | | | |
|--|-----|-----|-----|-------|-----|------|------|------|-----|------|
| | Jan | Feb | Mar | April | May | June | July | Aug. | Sep | Octo |
| No. of Patients | | | | | | | 215 | 219 | 224 | 226 |

No. of Patients on ARV's



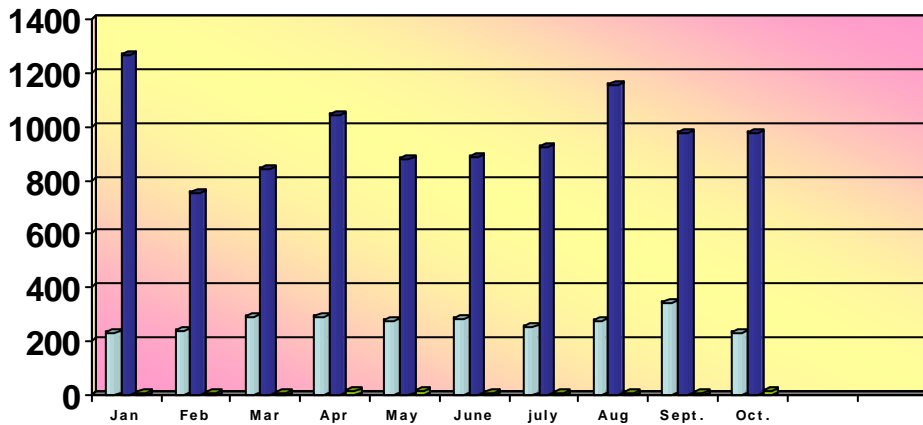
Pharmacy Statistics

Graph showing the items dispensed for the year 2009-10

Number of prescriptions issued for 2009-10

| | Jan | Feb | Mar | April | May | June | July | Aug. | Sep | Octo. |
|---------------------|------|-----|-----|-------|-----|------|------|------|-----|-------|
| No. of Prescription | 233 | 238 | 294 | 289 | 278 | 281 | 252 | 275 | 345 | 232 |
| No. of item issued | 1268 | 753 | 842 | 1044 | 879 | 888 | 924 | 1154 | 974 | 976 |

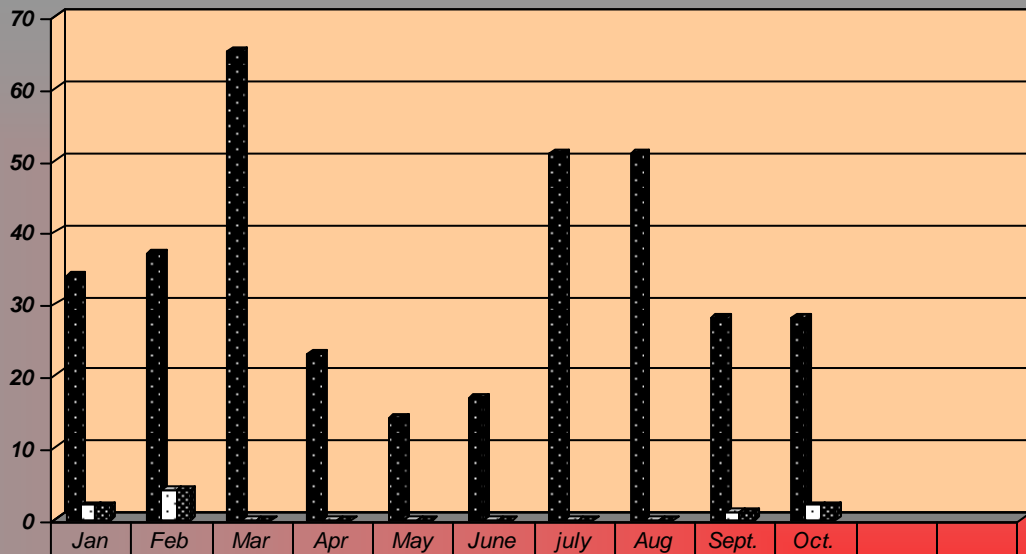
No. of Prescriptions and Items Issued for 2009-10



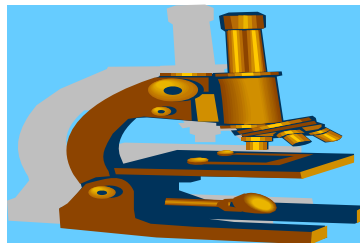
SPUTUM COLLECTION 2009-10

| Month | Jan | Feb | Marc | Apr | May | Jun | July | Aug | Sept | Oct |
|-------------------|-----|-----|------|-----|-----|-----|------|-----|------|-----|
| Sputum sent | 34 | 37 | 65 | 23 | 14 | 17 | 51 | 51 | 28 | 28 |
| Smear Positive | 2 | 4 | 0 | 0 | 0 | 0 | 0 | 0 | 1 | 2 |
| Treatment started | 2 | 4 | 0 | 0 | 0 | 0 | 0 | 0 | 1 | 2 |

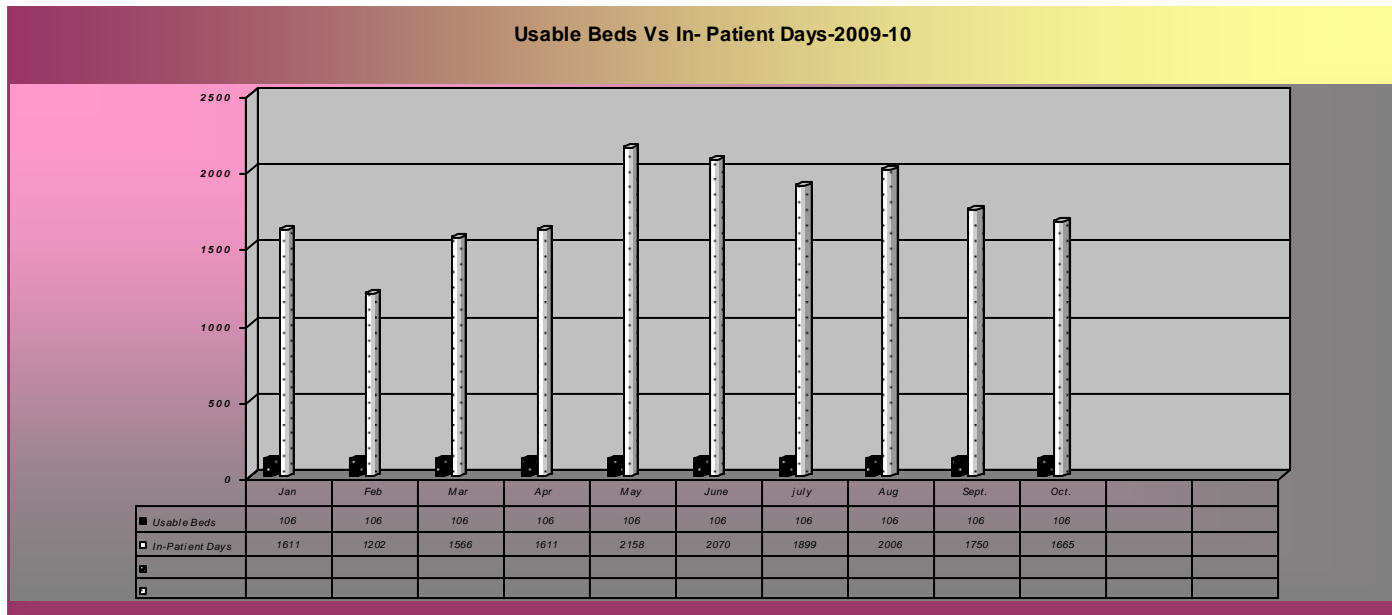
Sputum Tests Done-2009-10



| | Jan | Feb | Mar | Apr | May | June | july | Aug | Sept. | Oct. | | |
|---------------------|-----|-----|-----|-----|-----|------|------|-----|-------|------|--|--|
| ■ Sputum Sent | 34 | 37 | 65 | 23 | 14 | 17 | 51 | 51 | 28 | 28 | | |
| □ Smear Positive | 2 | 4 | 0 | 0 | 0 | 0 | 0 | 0 | 1 | 2 | | |
| ▣ Treatment Strated | 2 | 4 | 0 | 0 | 0 | 0 | 0 | 0 | 1 | 2 | | |
| □ | | | | | | | | | | | | |



| NUMBER OF USABLE DAYS VS INPATIENT DAYS FOR THE YEAR 2009-10 | | | | | | | | | | |
|---|------------|------------|------------|--------------|------------|-------------|-------------|-------------|------------|--------------|
| | Jan | Feb | Mar | April | May | June | July | Aug. | Sep | Octo. |
| Usable Beds | 106 | 106 | 106 | 106 | 106 | 106 | 106 | 106 | 106 | 106 |
| In-Patients Days | 1611 | 1202 | 1566 | 1611 | 2158 | 2070 | 1899 | 2006 | 1750 | 1665 |



| TB –ASSESSMENT AT FIRST QUARTER & SECOND QUARTER | FRS Quarter 09/10 | Sec Quarter 09/10 |
|---|--------------------------|--------------------------|
| Bacterial coverage | 53% | 56% |
| Sputa Turn Around Time | 5% | 13% |
| TB case finding Index | 2.4% | 2,5% |
| MDR Culture Turn around time at six weeks | 11% | 40% |
| MDR Culture Conversion rate at 6 months | 10% | 27% |

TB MDR OUTREACH DEPARTMENT

| | |
|--|-----|
| Number of all MDR Patients currently on treatment to October | 187 |
| Total Number of MDR-TB on DOT-to October | 57 |
| Number of MDR-TB that is self supervised to October | 130 |
| Number of all MDR cases treated as out patients to October | 114 |

MDR-TB DOT INFORMATION

| | |
|--|-----|
| Number of all MDR-TB patients Registered | 255 |
| Total Number of MDR-TB patients on DOT | 57 |
| Number of MDR cases | 11 |

MDR/XDR-TB(2ND QUARTER 2009-10)

MDR TB

All MDR-TB cases registered in the quarter

| | Pulmonary | | | | | | | | | | Total |
|-----------------------------|-----------|-----|--|--|---------|---------------|----------------------------------|------------------------------|-------------|-------|-------|
| Groups by culture and smear | New | New | Switched to regiment 4 during regiment 1 | Switched to regiment 4 during regiment 2 | Replace | After default | After failure of first treatment | After failure of retreatment | Transfer In | Other | |
| Cu+ | Sum+ | 8 | 14 | 0 | 3 | 0 | 28 | 12 | 60 | 7 | 132 |
| | Sm- | 2 | 5 | 0 | 0 | 0 | 6 | 6 | 0 | 0 | 19 |
| E-PTB | | NIL | NIL | NIL | NIL | NIL | NIL | NIL | NIL | NIL | NIL |

ALL MDR-TB BY SEX AND AGE (2ND QUARTER 2009-10)

| | 0-14 | 15-24 | 25-34 | 35-44 | 45-54 | 55-64 | 65+ | Total |
|--------|------|-------|-------|-------|-------|-------|-----|-------|
| Male | 0 | 0 | 11 | 12 | 5 | 2 | 0 | 42 |
| Female | 0 | 6 | 13 | 9 | 4 | 4 | 0 | 36 |

XDR-TB 2ND QUARTER

MDR-TB DOT INFORMATION

| | |
|--|---|
| Number of all confirmed XDR-TB patients (Prevalence) | 7 |
| Number of new confirmed XDR-TB patients(Incidence) | 0 |
| Number of suspected XDR-TB patients (waiting confirmation) | 0 |
| Number of confirmed XDR-TB that died | 0 |

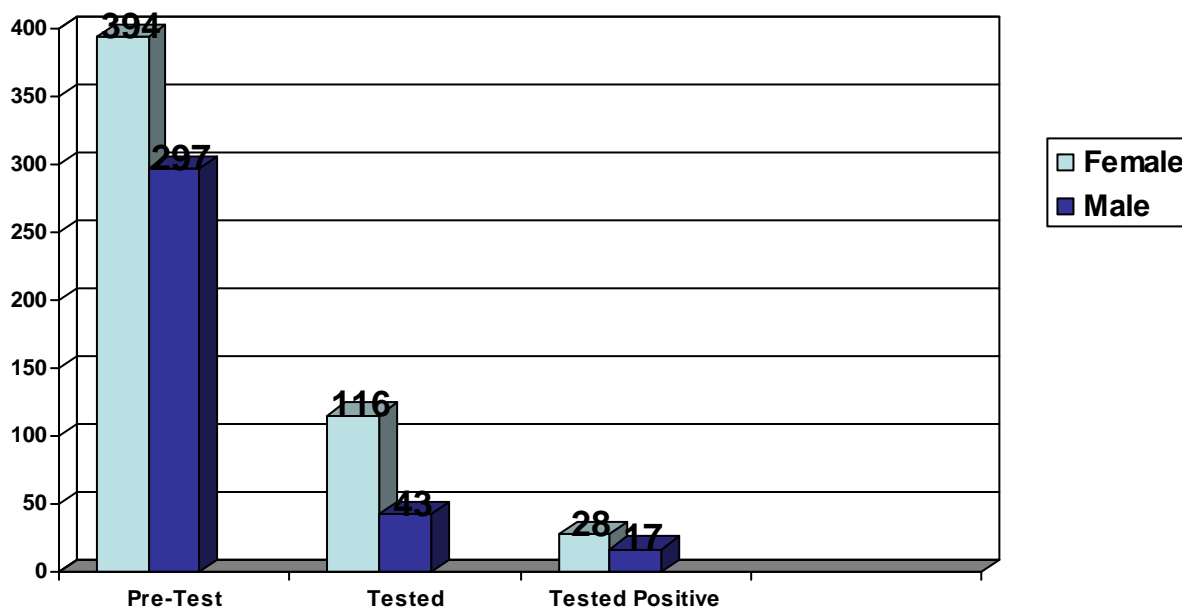
TB/HIV REPORT: 2009-10(FIRST & SECOND QUARTER)

| Indicators | 1 st Quarter 2009/2010 | 2 nd Quarter 2009/2010 |
|---|--------------------------------------|--------------------------------------|
| Newly Diagnosed TB cases(New+ -treatment cases) | 2009/2010 | 2009/2010 |
| Number of newly Diagnosed TB Cases | 8 | 15 |
| Number of Newly Diagnosed Tb cases who tested for HIV | 3 | 4 |
| Number of Newly Diagnosed TB cases who tested positive | 3 | 2 |
| Number of newly diagnosed TB HIV + cases started CPT | 0 | 0 |
| Number of Newly diagnosed TB/HIV+Co-infected patients on ART | 0 | 0 |
| Number of newly Diagnosed TB HIV+cases started on ART. | 0 | 0 |
| Number of newly Diagnosed TB HIV+Ve patients started TB Treatment | 3 | 2 |
| Total | 17 | 23 |

VCT STATISTICS
APRIL TO SEPTEMBER 2009

| | |
|--|-----|
| HIV client pre-test counseled(Excluding antenatal)-Female-April to September | 394 |
| HIV client pre-test counseled-Male –April to September | 297 |
| HIV client tested Female | 116 |
| HIV client tested –Male-April to September | 43 |
| HIV test positive-New(Excluding antenatal)-Female-April to September | 28 |
| HIV test positive –New-Male-April to September | 17 |

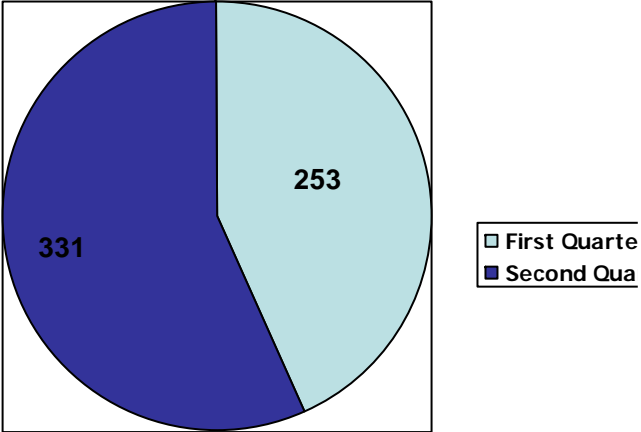
VCT Apr -Sept.2009-10



TRANSPORT

| | PERIOD | | |
|---|-------------------------|-------------------------|----------|
| DESCRIPTION | 1 ST QUARTER | 2 ND QUARTER | TOTAL |
| Number of trips(Total) | 253 | 331 | 584 |
| Patient related | 196 | 237 | 433 |
| Non patient related | 43 | 54 | 97 |
| Kilometers Traveled by Vehicles (Total) | 42280 | 52481 | 94761 |
| Cost of Fuel | 36313.87 | 32461.54 | 68775.41 |
| Repairs | 34712.05 | 49631.56 | 84344.04 |
| Oil Cost | 1130.95 | 258.4 | 1389.35 |
| Toll Fees | 725.5 | 945 | 1670.05 |
| Vehicle Expenditure | | | |
| VEHICLE REG. NO. | EXPENDITURE | | |
| KZN27501 | 15412.91 | 14476.15 | 29888.34 |
| KZN28179 | 8286.18 | 0 | 8286.18 |
| KZN28264 | 21725.51 | 20877.72 | 42603.23 |
| KZN29258 | 19944.72 | 28605.28 | 48550.00 |
| KZN29259 | 0 | 9395.57 | 9395.57 |
| | | | |
| TOTAL EXPENDITURE | | | |

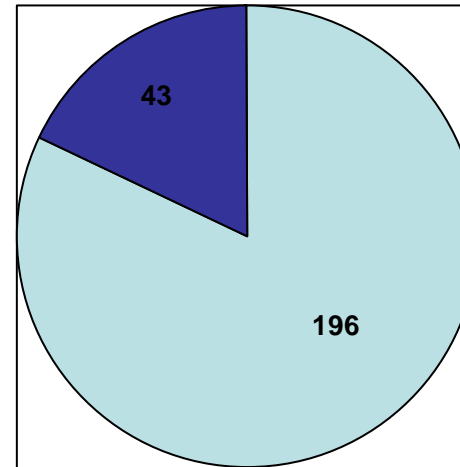
Number of trips in Quarters



TRANSPORT

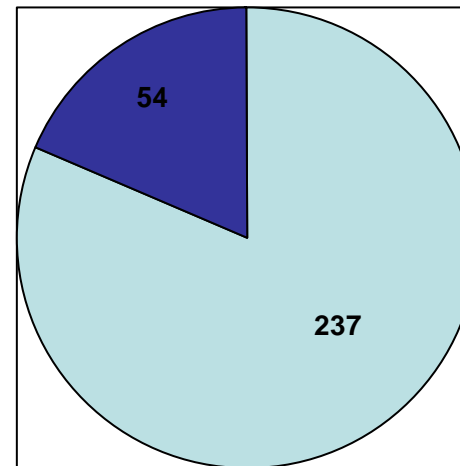
| DESCRIPTION | PERIOD | | TOTAL |
|---|-------------------------|-------------------------|------------------|
| | 1 ST QUARTER | 2 ND QUARTER | |
| Number of trips(Total) | 253 | 331 | 584 |
| Patient related | 196 | 237 | 433 |
| Non patient related | 43 | 54 | 97 |
| Kilometers Traveled by Vehicles (Total) | 42280 | 52481 | 94761 |
| Cost of Fuel | 36313.87 | 32461.54 | 68775.41 |
| Repairs | 34712.05 | 49631.56 | 84344.04 |
| Oil Cost | 1130.95 | 258.4 | 1389.35 |
| Toll Fees | 725.5 | 945 | 1670.05 |
| Total Costs | 72882.37 | 83296.50 | 156179.3 |
| Vehicle Expenditure | | | |
| VEHICLE REG. NO. | EXPENDITURE | | |
| KZN27501 | 15412.91 | 14476.15 | 29888.34 |
| KZN28179 | 8286.18 | 0 | 8286.18 |
| KZN28264 | 21725.51 | 20877.72 | 42603.23 |
| KZN29258 | 19944.72 | 28605.28 | 48550.00 |
| KZN29259 | 0 | 9395.57 | 9395.57 |
| TOTAL EXPENDITURE | 65369.32 | 73354.72 | 138723.32 |

Number of trips in First Quarter



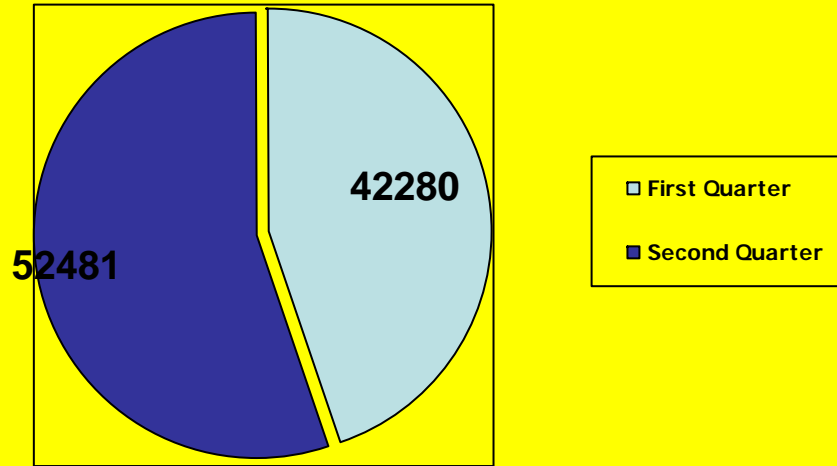
Patient related
 Non Patient Related

Number of trips in Second Quarter

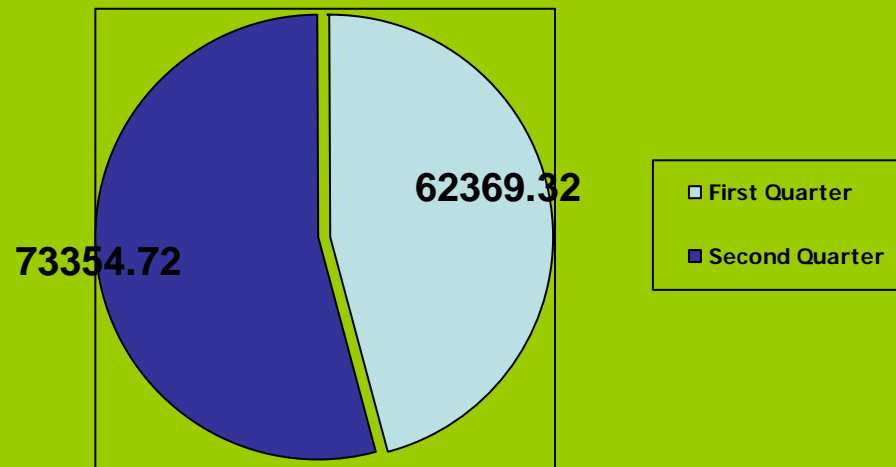


Patient related
 Non Patient Related

Kilometres Travelled per Quarter



Expenditure on Vehicles per Quarter



THE TEAM WHICH MAKE IT HAPPEN AT THULASIZWE HOSPITAL
*“We like to thank all the people who make collection, collation,
processing and capturing”*

