



health

Department:
Health
PROVINCE OF KWAZULU-NATAL

Thulasizwe TB /MDR Hospital

Information Bulletin
Issue No. 3

Thulasizwe MDR/TB Hospital
Bulletin 2011

Case Finding Reports –Q1 2008/ Q3 2011

	2008 %		2009 %		2010 %		2011 %	
Registered	124		155		190		177	
New	30	24%	43	28%	94	49%	83	47%
Relapsed	13	10%	11	7%	40	21%	23	13%
After Defaulted	6	4%	4	3%	2	2%	12	7%
After Failer of Reg 1	31	26%	51	33%	30	16%	20	11%
After Failer of Reg 2	34	28%	42	27%	21	11%	36	20%
New Extra Pulmonary	0	0%	0	0%	0	0%	1	1%
Other	10	8%	4	2%	3	1%	2	1%
HIV Positive	91	73%	86	55%	105	58%	141	80%
Started in ART	38	31%	51	49%	78	42%	126	71%

Six Months Interim Outcome for MDR Px started on Regimen IV Q1/2008 to Q4 2008

	Q1/2008	%	Q2/2008	%	Q3/2008	%	Q4/2008	%	Total	%
Started on Treatment	27		38		38		21		124	
Neg.(Smear & Culture)	14	51%	12	32%	17	45%	9	43%	52	42%
Pos.(smear & Culture)	0	0%	1	2%	0	0%	2	9%	3	2%
No Result(still on Rx)	8	30%	14	37%	11	30%	6	29%	39	31%
Transfer Out	0	0%	11	29%	1	2%	0	0%	12	10%
Defaulted	0	0%	0	0%	1	2%	1	5%	2	2%
Died	5	19%	0	0%	8	21%	3	14%	16	13%

Six Months Outcome MDR and XDR-TB Thulasizwe Hospital (Q1-Q4 2009)

Source : MDR reports

Q 3/2009 - *2 Progress to XDR

Q4 2009 - *10 Progress to XDR

	Q1/2009		Q2/2009		Q3/2009		Q4/2009	
		%		%		%		%
Started on Treatment	39		47		38		27	
Neg.(Smear & Culture)	19	51%	18	32%	11	31%	8	22%
Pos.(smear & Culture)	16	0%	14	2%	15	42%	12	32%
No Result(still on Rx)	15	30%	14	37%	5	14%	1	3%
Transfer Out	1	0%	1	29%	0	0%	0	0%
Defaulted	2	0%	1	0%	0	0%	1	3%
Died	6	19%	3	0%	5	14%	5	14%

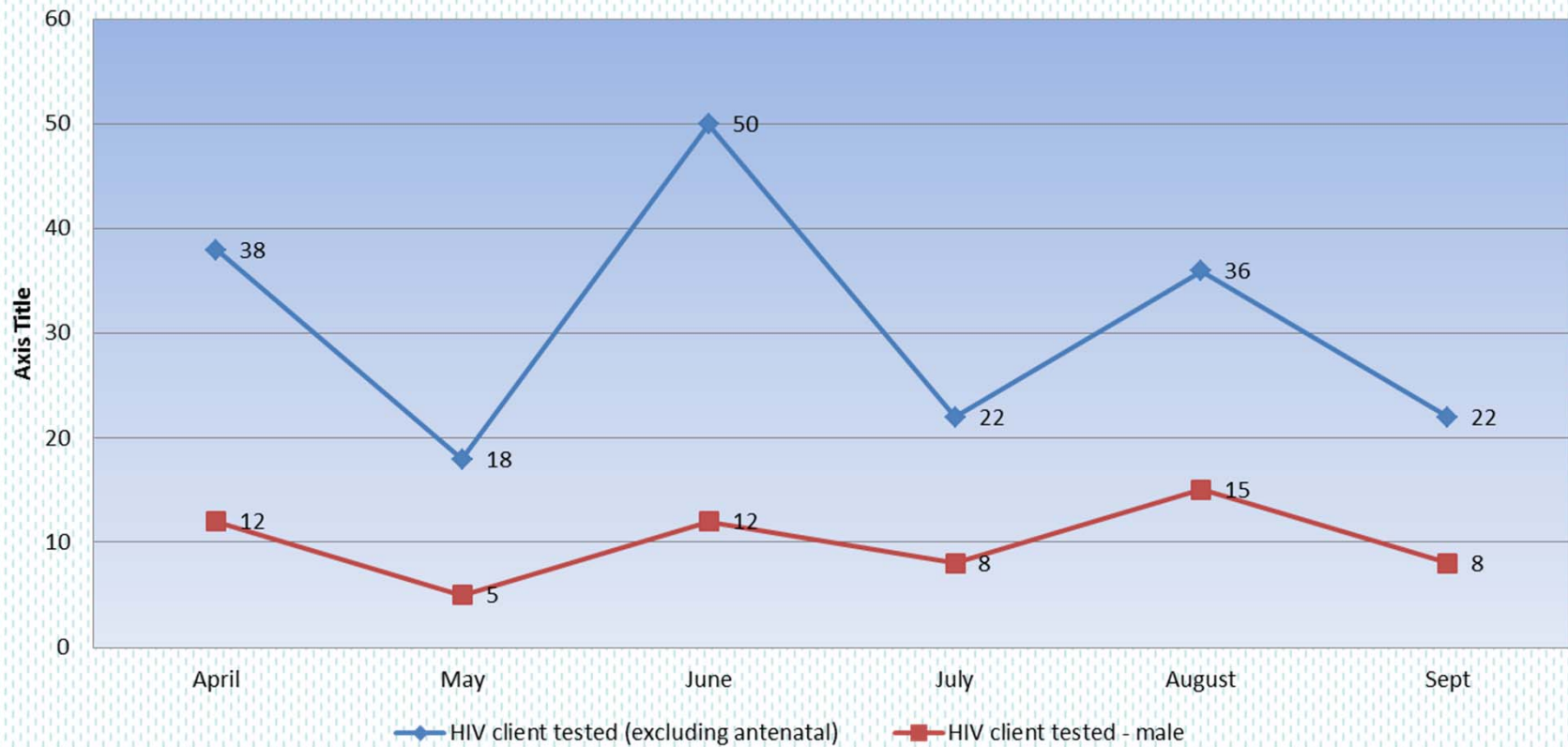
Treatment Outcome Q1/2008 –Q3/2009

	Q1/2008 %		Q2/2008 %		Q3/2008 %		Q4/2008 %		Q1/2009 %		Q2/2009 %		Q3/2009 %	
Started on Treatment	27		38		38		21		39		44		37	
Cured	10	37%	14	37%	11	29%	0	0%	14	36%	17	39%	14	38%
Treatment Completed	8	30%	5	13%	6	16%	0	0%	4	10%	5	11%	5	14%
Died	8	30%	5	13%	15	39%	0	0%	6	15%	10	23%	12	32%
Defaulted	0	0%	1	3%	1	3%	0	0%	1	3%	6	14%	3	8%
Failed	1	3%	3	8%	1	3%	5	24%	2	5%	1	2%	0	0%
Still on Treatment	0	0%	0	0%	0	0%	16	76%	0	0%	0	0%	1	3%
Transferd Out	0	0%	10	26%	4	10%	0	0%	12	31%	5	11%	2	5%
HIV Positive	22	81%	31	82%	27	71%	14	67%	31	79%	26	59%	22	59%
Hiv Negative	5	19%	7	18%	11	29%	6	28%	8	21%	18	41%	15	41%

HCT

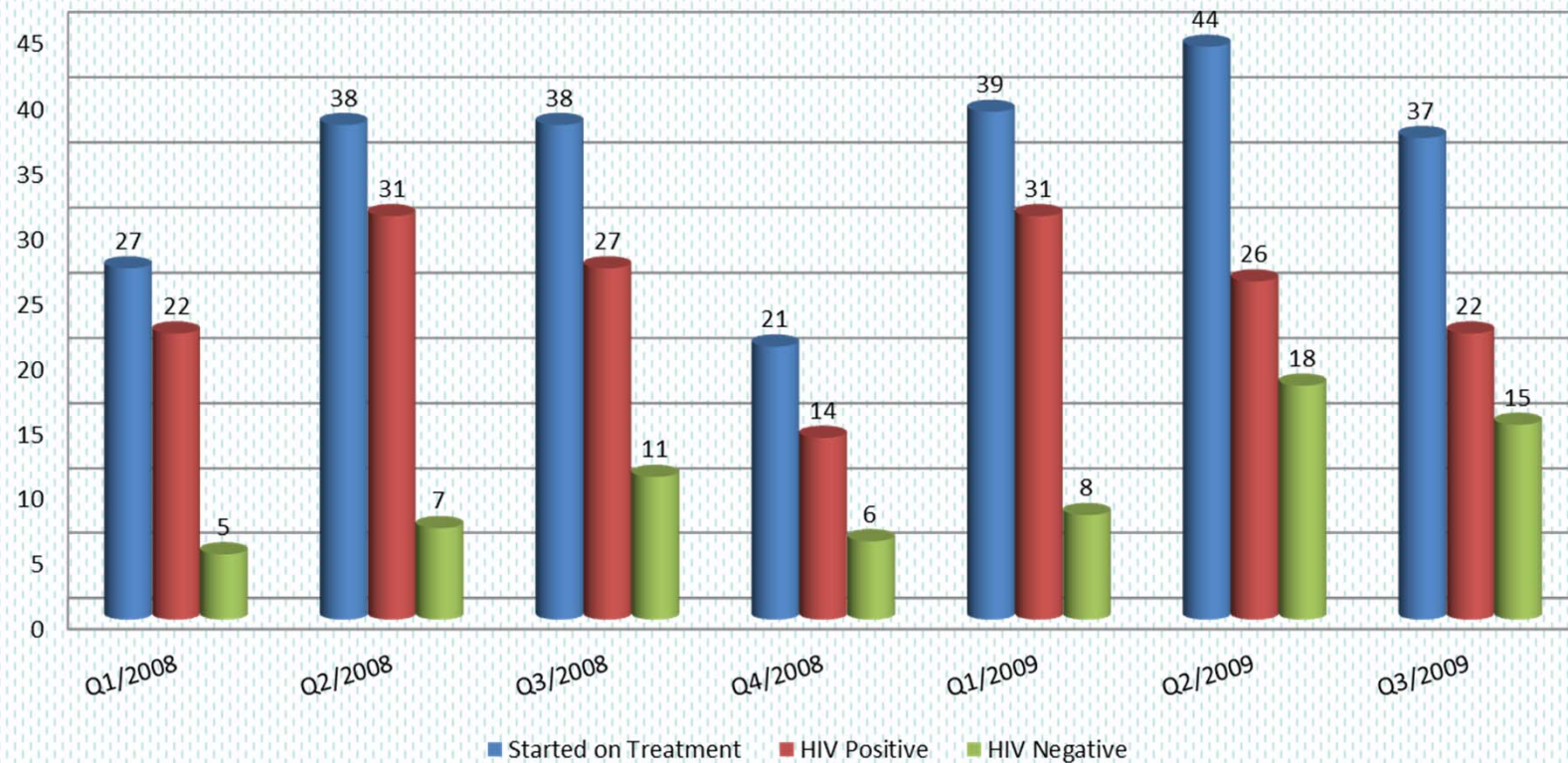
Q1/2011 to Q2/2011

HIV Test Male vs Female -Thulasizwe Hospital
April- September 2011
Source :DHIS Routine Raw data 2011

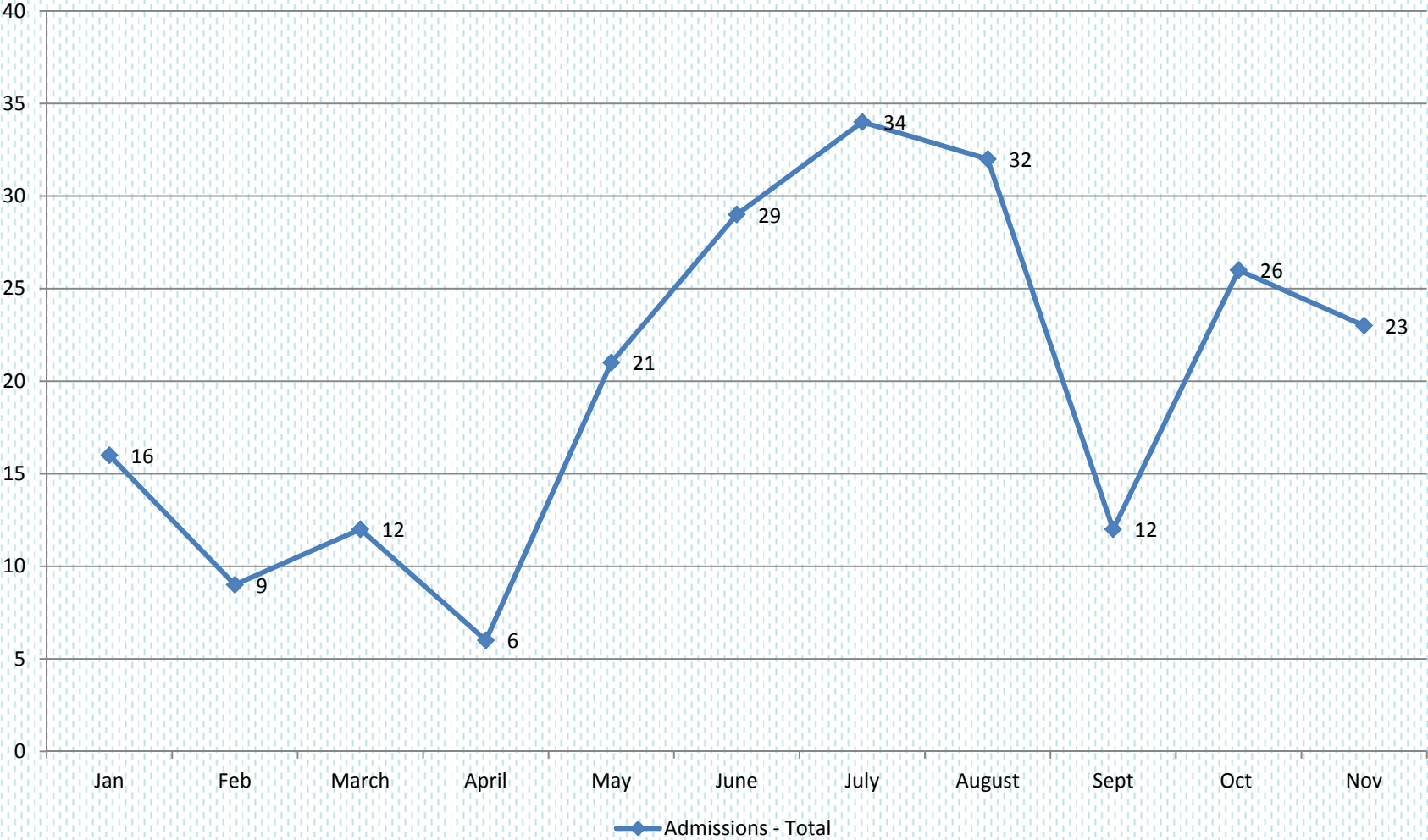


Annual Treatment Outcome Q1/2008 to Q3/2009

MDR patients Vs HIV Status for Thulasizwe Hospital
2008-2009
Source : MRD annual reports

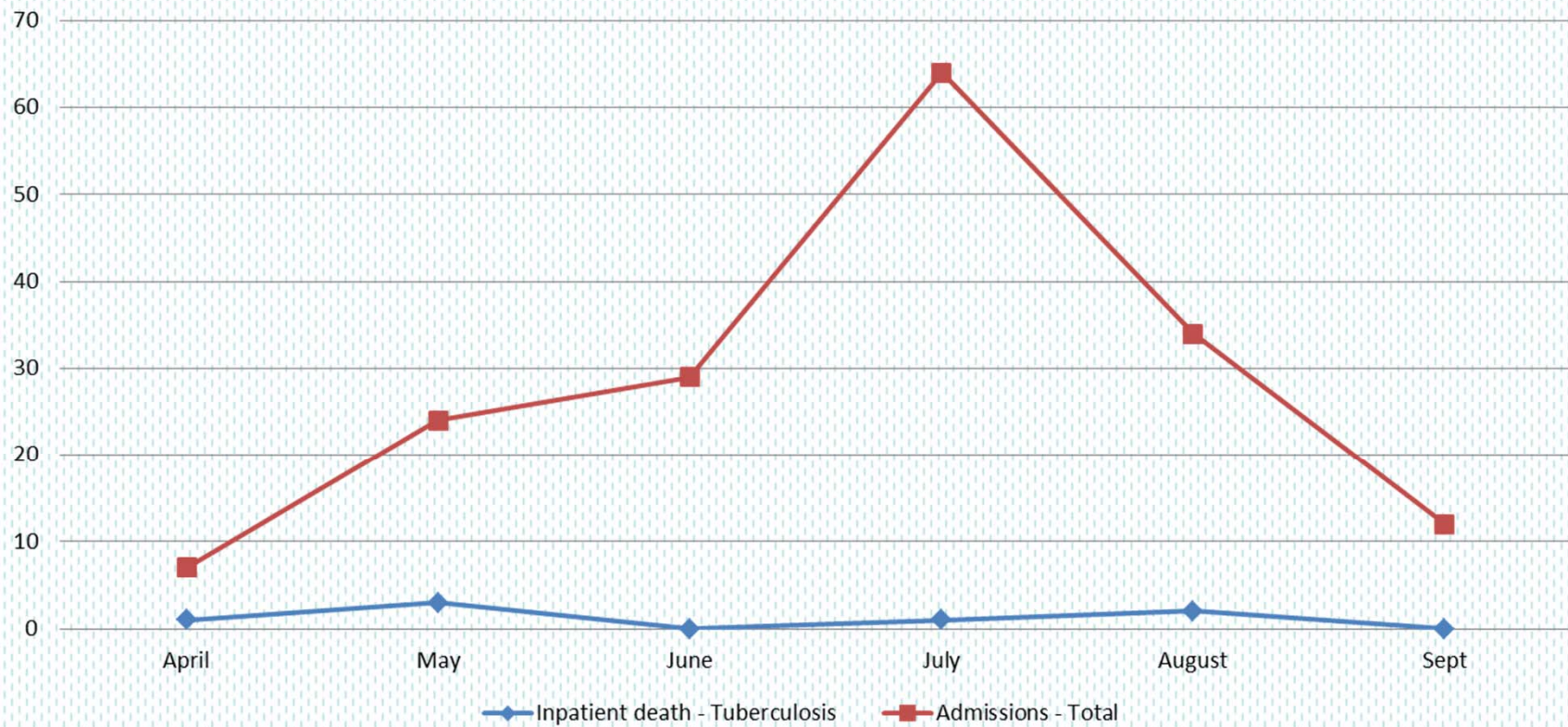


Admissions-Total
Thulasizwe hospital-Jan/Nov 2011
Source : DHIS



Admission vs. Deaths April - September 2011

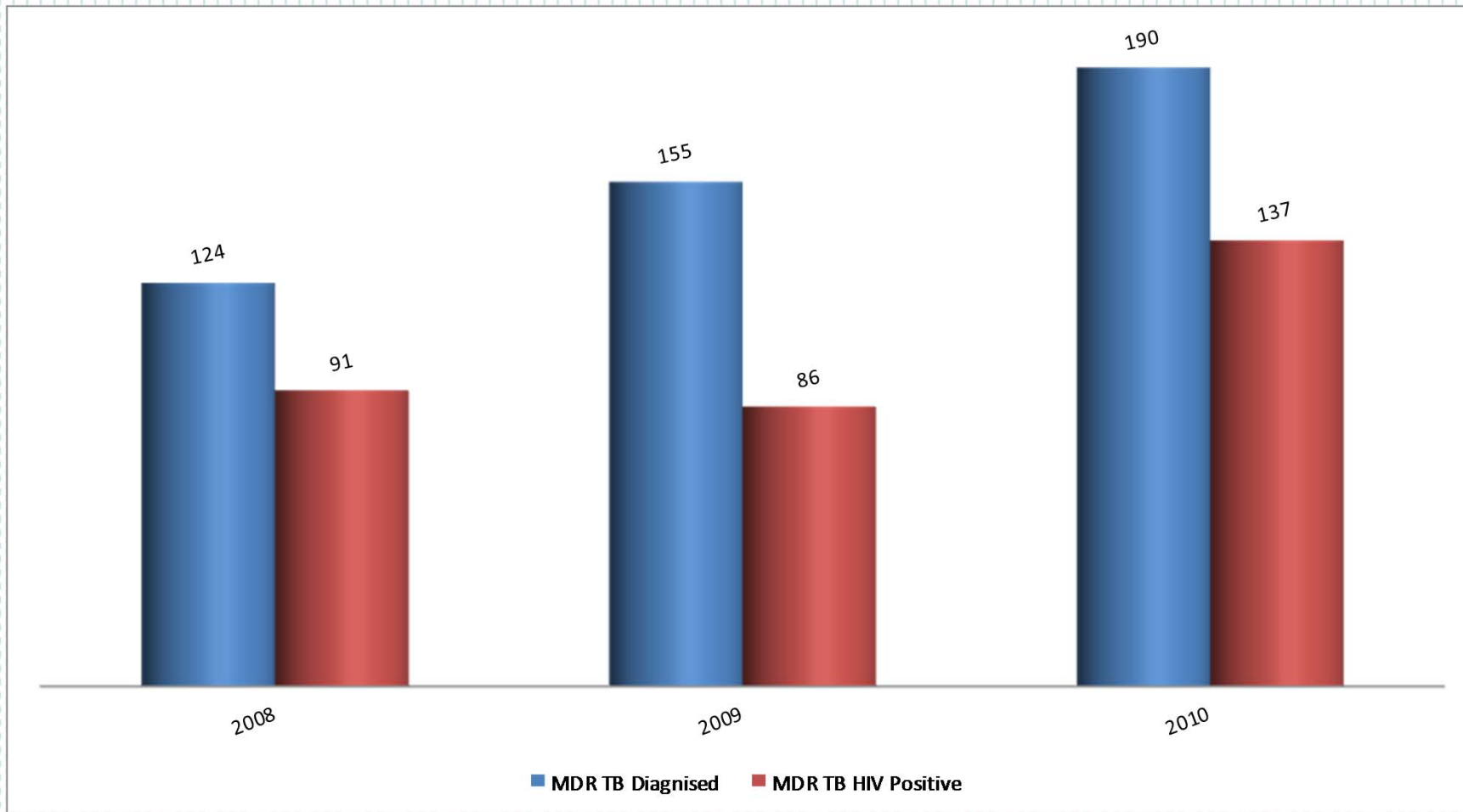
Admissions vs. Deaths
Thulasizwe MDR TB Hospital April -Sept 2011
Source : DHIS



Thulasizwe MDR/TB Hospital
Bulletin 2011

Case Finding Report-MDR vs. HIV 2008-2010

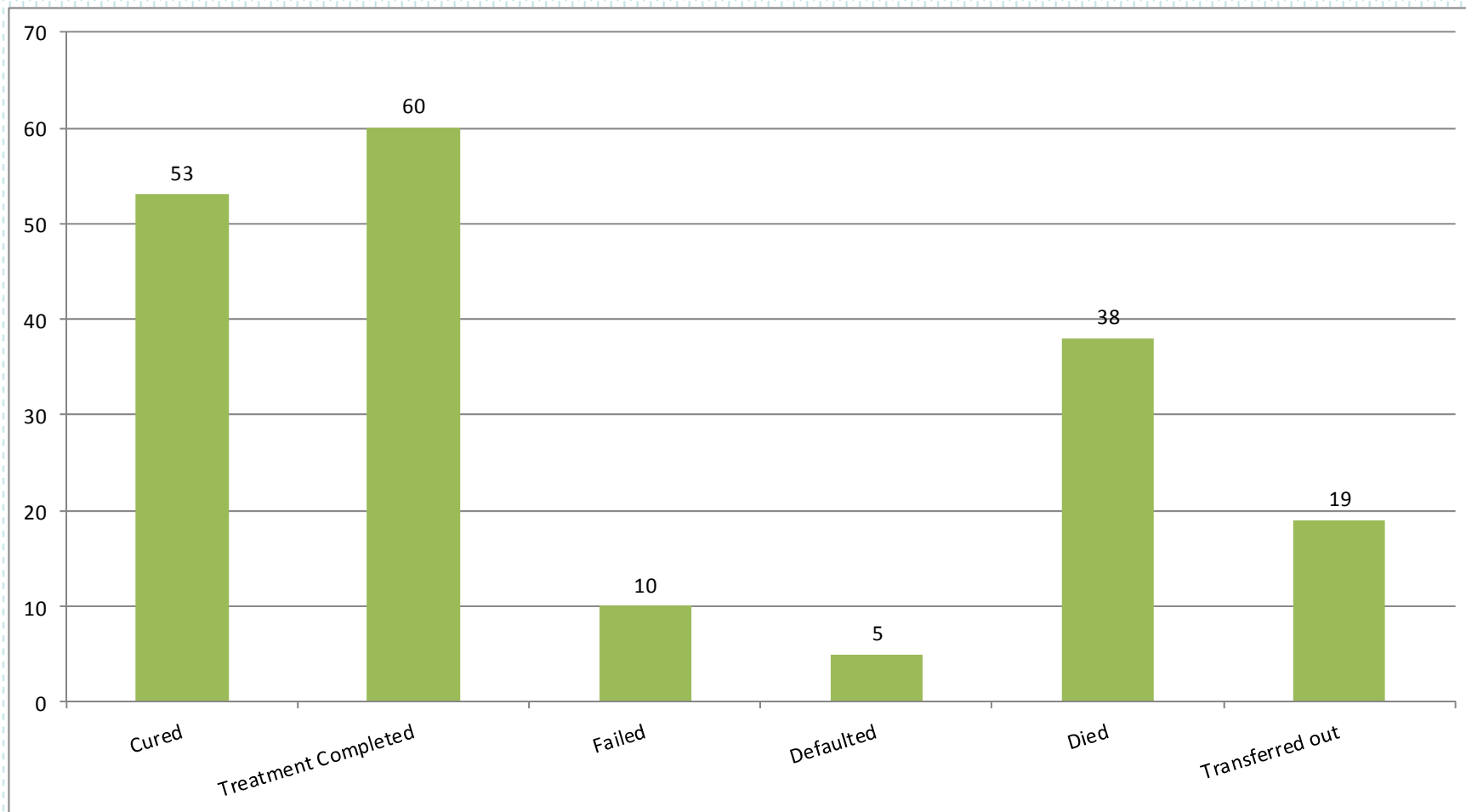
Source : MDR Reports 2011



Thulasizwe MDR/TB Hospital
Bulletin 2011

Annual Treatment Outcome Q1/2008-Q4/2008

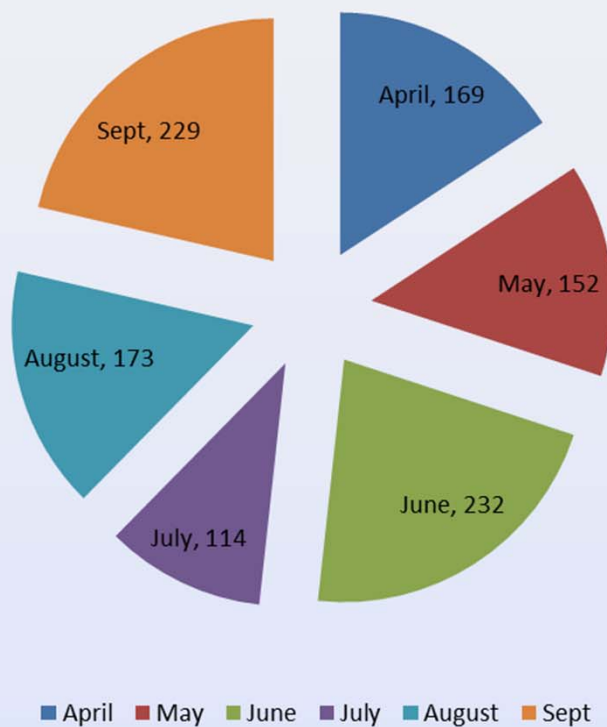
Source MDR Reports 2011



Thulasizwe MDR/TB Hospital
Bulletin 2011

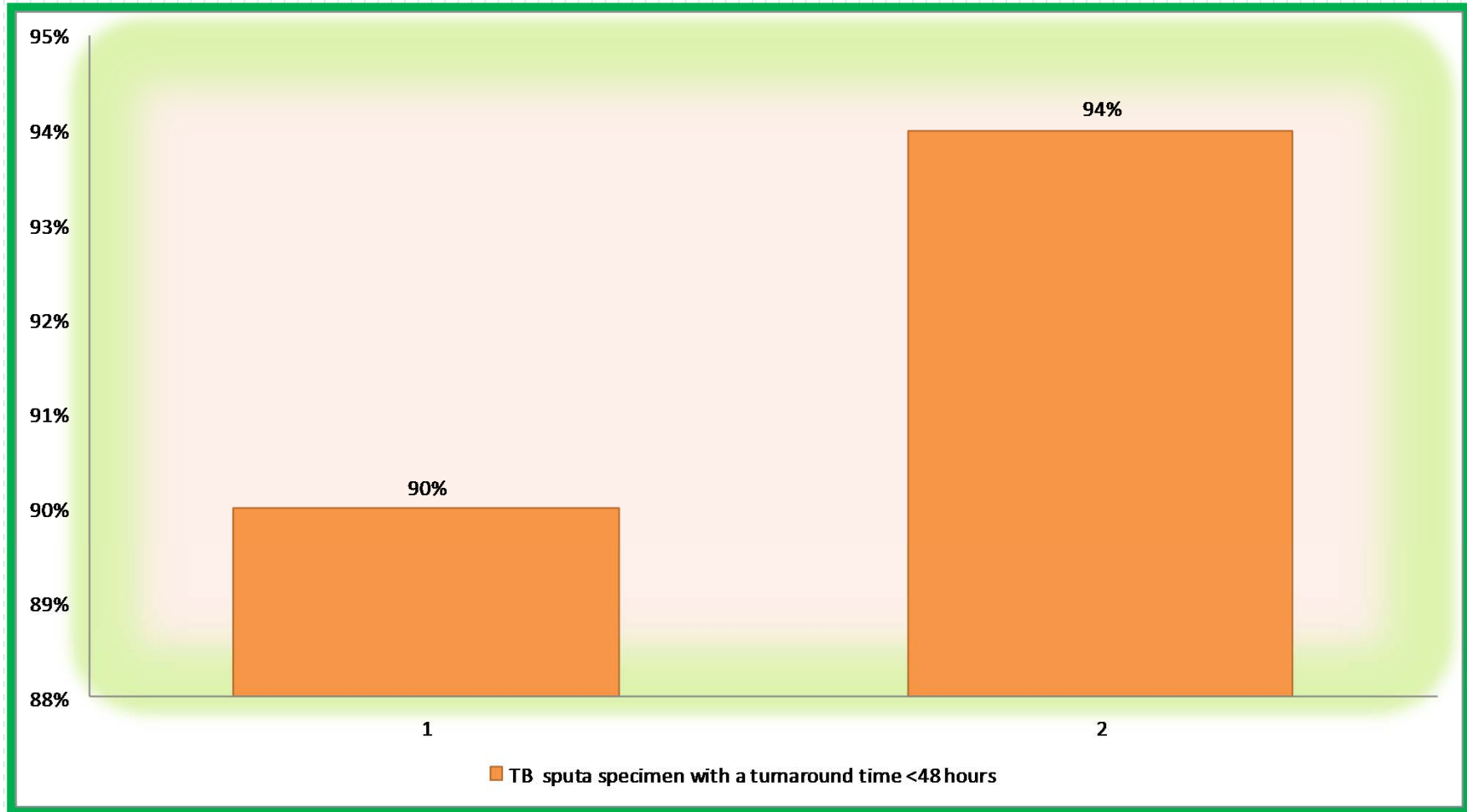
OPD Head Count Q2/2001 to Q3/2011

OPD headcount - follow-up visit
Thulasizwe Hospital April-Sept 2011
Source : DHIS



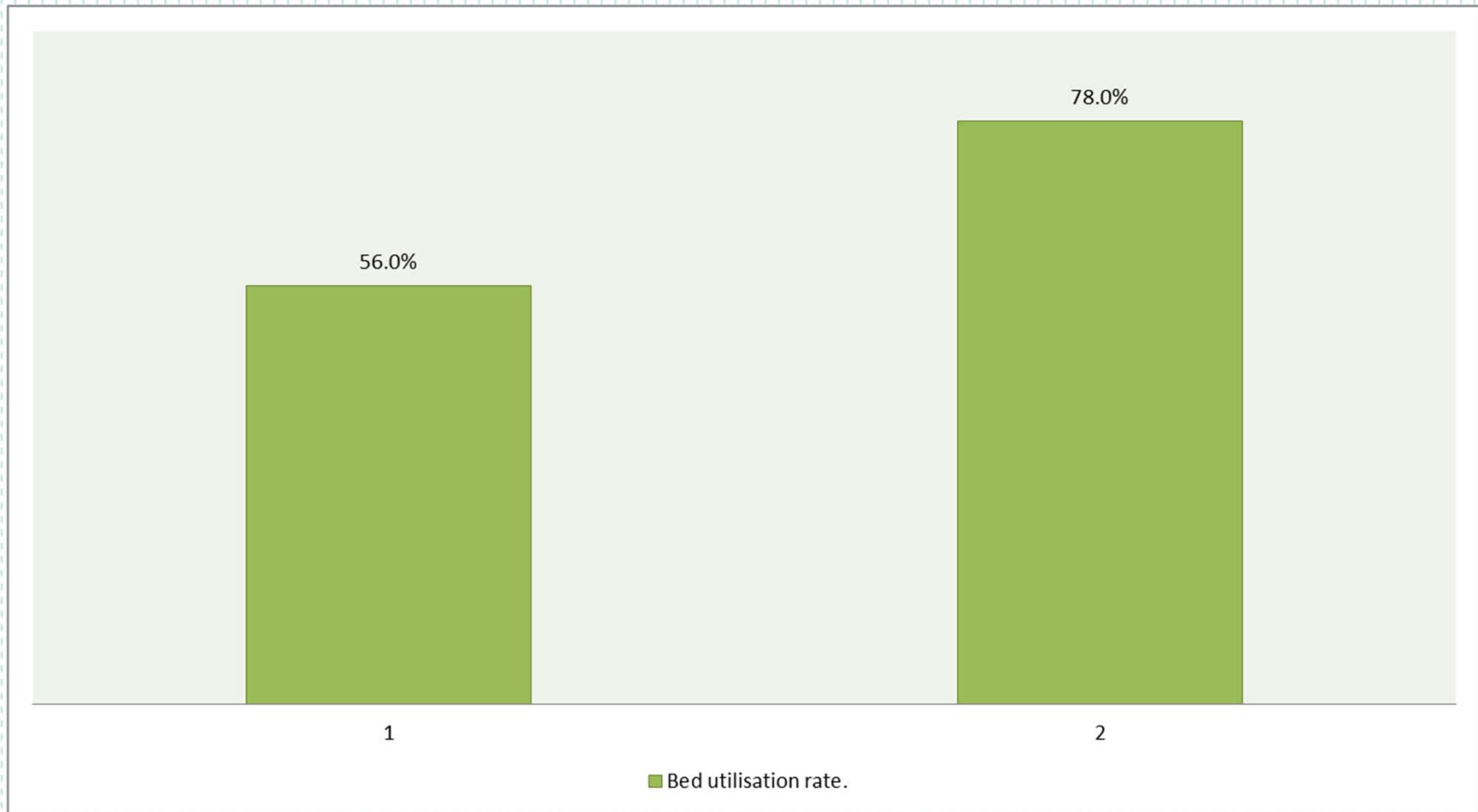
TB Sputa Specimen Turn Around Time April –Sept 2011 : Q1vs Q2

Source : Quarterly Report 2011



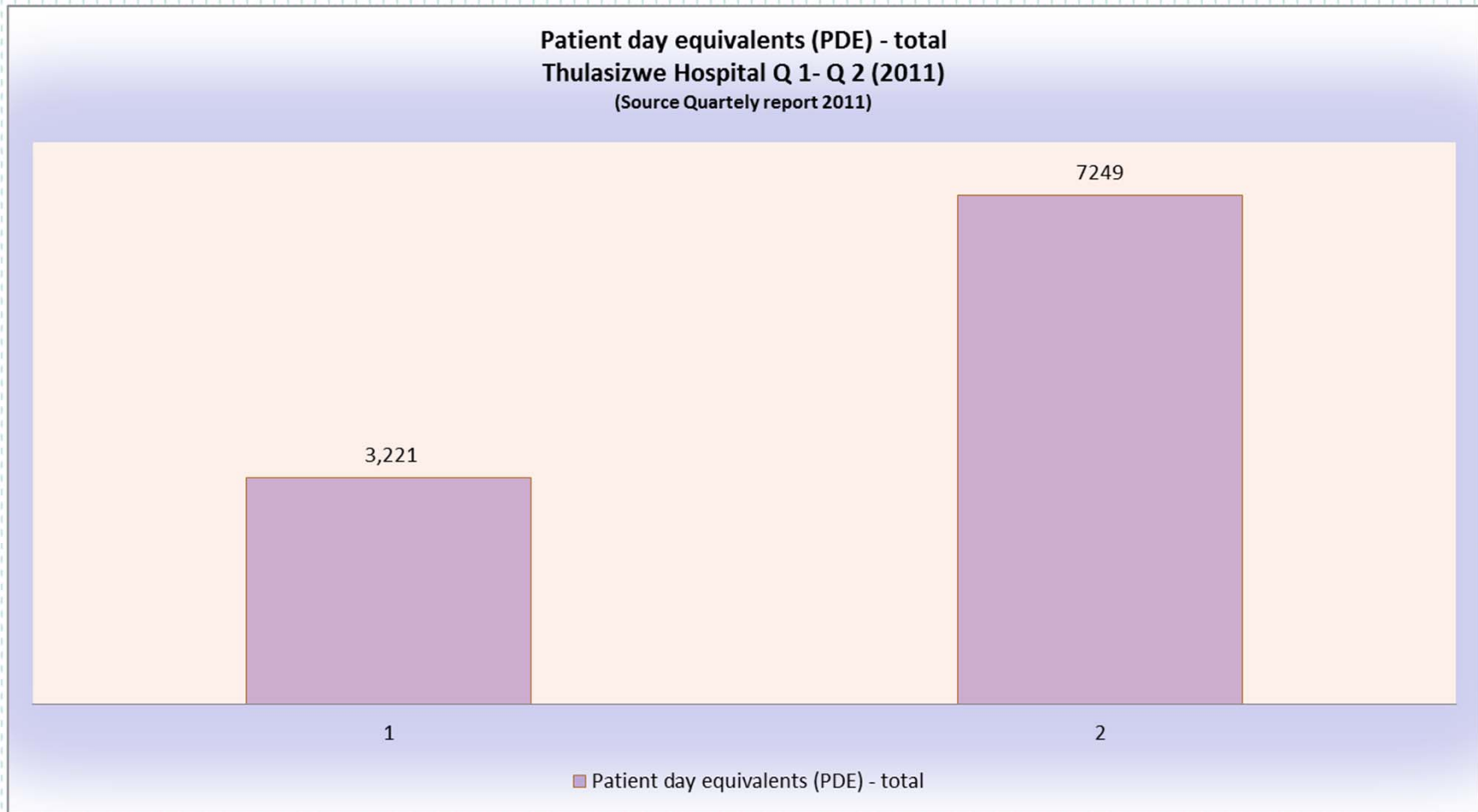
Thulasizwe MDR/TB Hospital
Bulletin 2011

Bed utilization Rate
Thulasizwe Hospital Q1-Q2(April-Sept 2011)
(source : Quarterly report 2011)



Patient Day Equivalents(PDE)-Total
Thulasizwe Hospital Q1-Q2(2011)

(Source : Quarterly Report 2011)



WITH PASSION WE GIVE QUALITY CARE



*N.E Zulu
Data Capturer*

THULASIZWE MDR/TB HOSPITAL

Zululand Health District

P/Bag x 206

Ceza

3866

Tel: 0358 326007

Fax: 0358 320062/0865648689

Email: Nkosi.zulu@kznhealth.gov.za