



UGU

NEWS

JULY-SEPTEMBER 2020

UGU HEALTH DISTRICT MEC VISIT



SAMPLE PHOTO
SOURCED: IAN...

MEC for Health, Ms Nomagugu Simelane-Zulu, Ugu Health District Director and the team during MEC visit in August to check if the district is line with Covid-19 precautions

On the 21st of August 2020 as part of her roadshows to inspect the fever clinics which were designed to fight Covid-19 in the province, the MEC for Health in Kwa Zulu Natal Ms. Nomagugu Simelane Zulu with the District Director Mrs NC Mkhize, visited

GJ Crookes, Port Shepstone and Murchison Hospitals. All these hospitals in the District and Community Health Centers are having fever clinics. The purpose of the visit was to check the status of these clinics and the availability of Personal Protective Equipment

(PPE) as Covid-19 was at its peak and also outline provincial interventions set for the hospital.

All hospitals which were visited appreciated the support from the MEC

PINK DRIVE IN UGU HEALTH DISTRICT

Ugu Health District hosted Pink Drive outreach campaign on the 25th and 26th September 2020 at Umdoni Municipality-Umzinto Town Hall and Umzumbe Municipality-Turton CHC. These successful outreach campaigns was initiated by Department of Social Development, United Nations Population Fund and Pink Drive

Pink Drive is a well established breast and cervical cancer organization established in 2009 and is a significant player in the area of gender related cancer and has joined forces with the National Departments of Health and Social Development to provide cancer screening , in support of the existing screening services offered by health care facilities during Covid-19. It was founded due to the high need of breast education, symptoms of breast cancer and to identify breast cancer. Pink Drive aims to reach many citizens irrespective of age, gender, race, culture, social classifications and medical status, through wellness days, community programmes and awareness campaigns.

The message, "Early Detection Can Help Prolong A Life" was reinforced to the communities, government employees and NGOs who attended both events.

Deputy Minister for Social Development, Ms Hendrietta Ipeleng Bogopane-Zulu who was also in attendance delivered a keynote address during these events.

Free mammographic services, clinical breast examinations, pap smears, screening for prostate cancer , cervical cancer screening was offered COVID 19 testing, screening and education, HIV and



Ugu Municipality Mayor Cllr S Ngcobo , Ugu Health District Director and team during Pink Drive campaign



Mrs. P.J.Tobo –DCST Advanced Midwifery and team she led indicated that Pink Drive campaign was hosted under Covid-19 precautions in both Umdoni and Umzumbe Sub-districts

TB testing and other health screening and testing was also provided during these events.





02



KWAZULU-NATAL PROVINCE
HEALTH
REPUBLIC OF SOUTH AFRICA

 KwaZulu-Natal Department of Health
 KZN Department of Health

 kznhealth
 @kznhealth

**GROWING
KWAZULU-NATAL
TOGETHER**

PHOTO GALLERY-PINK DRIVE



03



KWAZULU-NATAL PROVINCE
HEALTH
REPUBLIC OF SOUTH AFRICA

 KwaZulu-Natal Department of Health

 KZN Department of Health

 kznhealth

 @kznhealth

**GROWING
KWAZULU-NATAL
TOGETHER**

BICYCLE COURIER MESSENGER IN UGU HEALTH



CCMDD PROGRAMME INTRODUCED BICYCLE COURIER MESSENGER: Photos – Elim and KwaJali Clinics communities also benefited in the programme. CCMDD has a new look DablapMeds

Bicycle Courier Messenger Model is an initiative to deliver Central Chronic Medicine Dispensing and Distribution Programme (CCMDD) parcels to patient homes.

The bicycles are provided by Pharmacy Direct, courier messengers are contracted by Pharmacy Direct and are given a stipend for the first three months, thereafter, they will be paid per parcel enrolled onto the bicycle and successfully delivered to the patient.

The purpose of the Bicycle Courier Messenger is to:

- ◆ Deliver CCMDD parcels to the homes/areas of patients who have chosen not to collect at the facility or at Pick up Points

- ◆ Create a business opportunity for unemployed youth in the community with the vision of creating Small Medium and Micro Enterprises (SMMEs) in the future.

Pharmacist at the District Office Miss Tembakazi Ndlobeni said The bicycle model functions the same way as an external Pick up Point. All patients on the Spaced Fast Lane Appointment to be offered the option to choose the Bicycle PuP to decant the DOH Facilities. Bicycle PuP may be individualized or grouped per cohort or area

At the moment the district is having 10 facilities which are having bicycles, facilities were selected from all four sub-districts.

Patients are only allowed to use the bicycle attached to their facility and can change their PuP when the

Patients are very excited with Central Chronic Medicine Dispensing and Distribution Programme (CCMDD) as it is giving them an allowance to choose on how do they want their medication to be delivered to them.

This is also helping in reducing the defaulter rate because most of the patients are no more worried with long waiting times at the clinics and hospitals and travelling costs



#JERUSALEMCHALLENGE



Ugu Health District Office also accepted the #JERUSALEMDANCECHALLENGE. The dance challenge took off in February 2020, as South Africa and other countries were experiencing lockdown because of Covid-19. Amongst the facilities who also accepted the challenge in the district are GJ Crookes Hospital, Gamalakhe CHC, Murchison Hospital, St Andrews Hospital and Port Shepstone Hospital. St Andrews Hospital took position one followed by the District Office and Murchison Hospital. Staff members who are dealing with Covid-19 agreed that this dance really assisted in relieving stress which was caused by the pandemic.

HO + SPOT
QAPHELISISA

LIDLANGILE IGCIWANE LE-CORONA KULE NDAWO

GWEMA IZIXUKU

QHELELANANI NGO 2m
GQOKA I-MASK
GEZA IZANDLA



#KUSEZANDLENI ZETHU

UNKK NOMAGUGU SIMELANE-ZULU
UNGQONGQOSHE WEZEMPILO



24HR NICD HOTLINE : 0800 029 999
WHATSAPP NUMBER : 060 012 3456

PROVINCIAL HOTLINE : 033 846 6000
www.kznhealth.gov.za

**GROWING
KWAZULU-NATAL
TOGETHER**

THIS AREA IS A CORONAVIRUS

HO + SPOT

TAKE EXTRA CARE !

AVOID GATHERINGS

PRACTICE SOCIAL DISTANCING

WEAR MASK
WASH HANDS



IT IS IN OUR HANDS

UNKK NOMAGUGU SIMELANE-ZULU
UNGQONGQOSHE WEZEMPILO



24HR NICD HOTLINE : 0800 029 999
WHATSAPP NUMBER : 060 012 3456

PROVINCIAL HOTLINE : 033 846 6000
www.kznhealth.gov.za

**GROWING
KWAZULU-NATAL
TOGETHER**

02



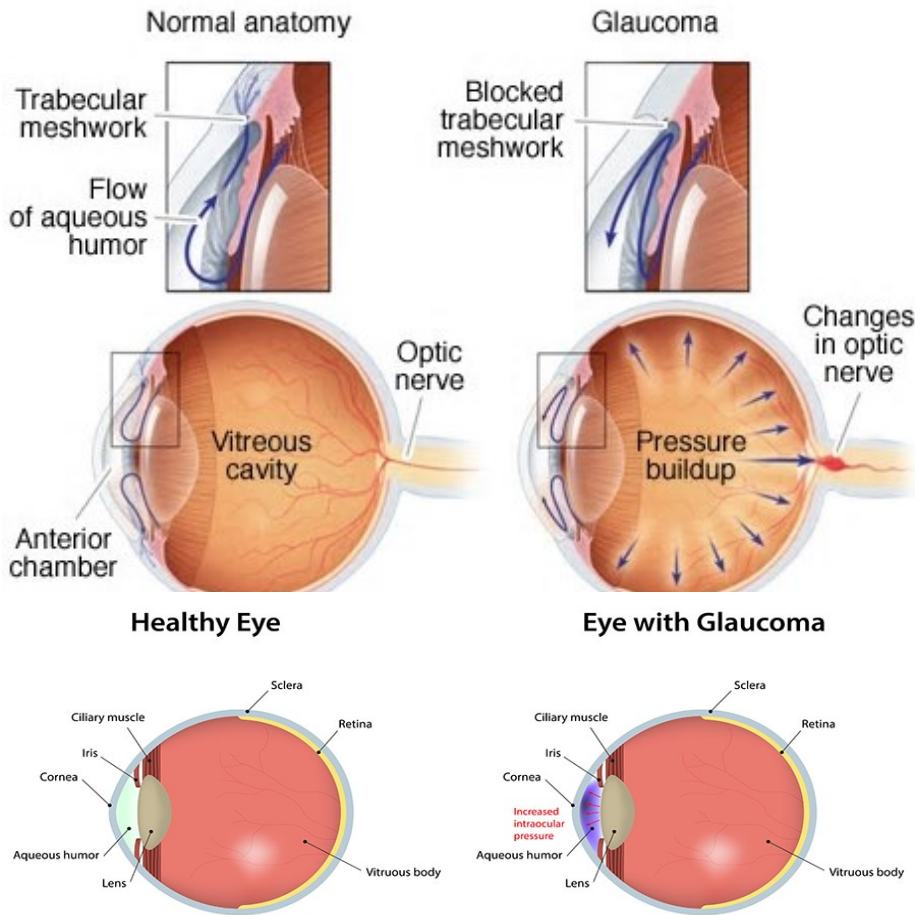
KWAZULU-NATAL PROVINCE
HEALTH
REPUBLIC OF SOUTH AFRICA

f KwaZulu-Natal Department of Health
📺 KZN Department of Health

📷 kznhealth
🐦 @kznhealth

**GROWING
KWAZULU-NATAL
TOGETHER**

ABNORMAL HIGH PRESSURE IN YOUR EYE CAN CAUSE GLAUCOMA



Glaucoma is a group of eye conditions that damage the optic nerve, the health of which is vital for good vision. This damage is often caused by an abnormally high pressure in your eye.

Glaucoma is one of the leading causes of blindness for people over the age of 60.

The most common type of glaucoma is open-angle glaucoma which often has no symptoms other than slow vision loss. Angle-closure glaucoma, although rare, is a medical emergency and its symptoms include eye pain with nausea and sudden visual disturbance.

While there are no known ways of preventing glaucoma, blindness or significant vision loss from glaucoma can be prevented if the disease is recognized in the early stages.

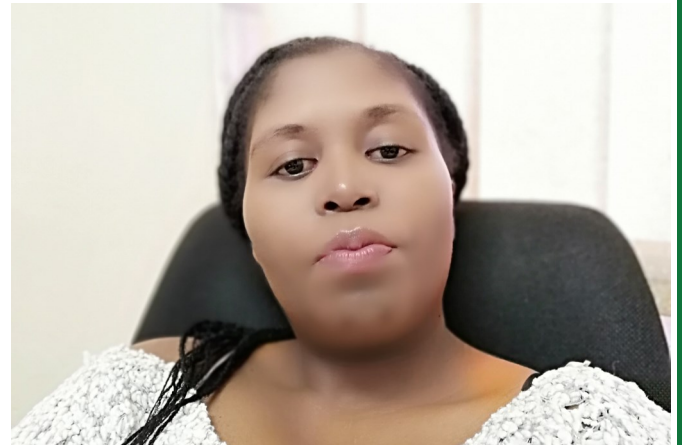
Treatment includes eye drops, medication and surgery.

ACKNOWLEDGEMENTS

EDITORIAL TEAM



**DISTRICT DIRECTOR
MRS N C MKHIZE
CHIEF EDITOR**



**AD: COMMUNICATIONS
MRS T MATHENJWA
WRITER, DESIGNER, PUBLISHER**

